

# LOGBOOK

Year: 2024

Season: Xmas / New Year

Logbook pages collaboratively produced online using a shared *Google Doc*

*Juan Corrin, March 2025*



# Dec / Xmas 2024 Logbook



## [LOGBOOK HELP](#)

STARTED 5th December 2024

### 5/12/2024 Info from Guy and Pete via Pete

- Cueva Lisa or Elisa (a Lobetum cave) above the Asón at Riva. **NEW SITE #5446** 30T 453873 4792569 166m. This has a survey - see file and some description.
- Cueva de la Piña (no grid ref yet) "An old dry stream passage leading to a pitch with the sound of water below."

#### **NEW SITE #5447**

- The team exploring Codisera ([#0039](#)) said they're coming (long weekend break)
- Catalans are going to check out Torca de la Rasa ([#5135](#)) as a flood escape route from Valline 2 ([#0733](#)).

### 10/12/2024 Data admin

**NEW SITE #5448** "Spider Roof" at Garzón from La Cambera Journal 2023

Entrance codes required for some holes:

2 more entrances to [#0154](#) **NEW SITES #5449 Rite Now! #5450 Rite Here!**

Bottom entrance to Cobadal [#1930](#) **NEW SITE #5451**

Fuente Aguanaz [#0713](#) Only the cavers' entrance has a code. Bottom and middle entrances should have one:

**NEW SITES 5452 (middle) and 5453 (bottom)**

Jivero 2 ([#0017](#)) bottom entrance **NEW SITE #5454**

### 19/12/2024 Torca la Decepción ([4732](#))

Di & Si (Diane Arthurs & Simon Cornhill)

Trip to clean and rig the Small and Grand Slam ropes, also drop gear off at the top of Grand Slam.

We arrived off the ferry to find Matienzo awash with heavy rain and the gully leading up to Decepción strongly flowing. Conditions underground were surprisingly not too bad, but we installed some anchors part way down Small Slam to give a Y-hang and comparatively dry hang. The Super Duck was also flowing well but was also fine.





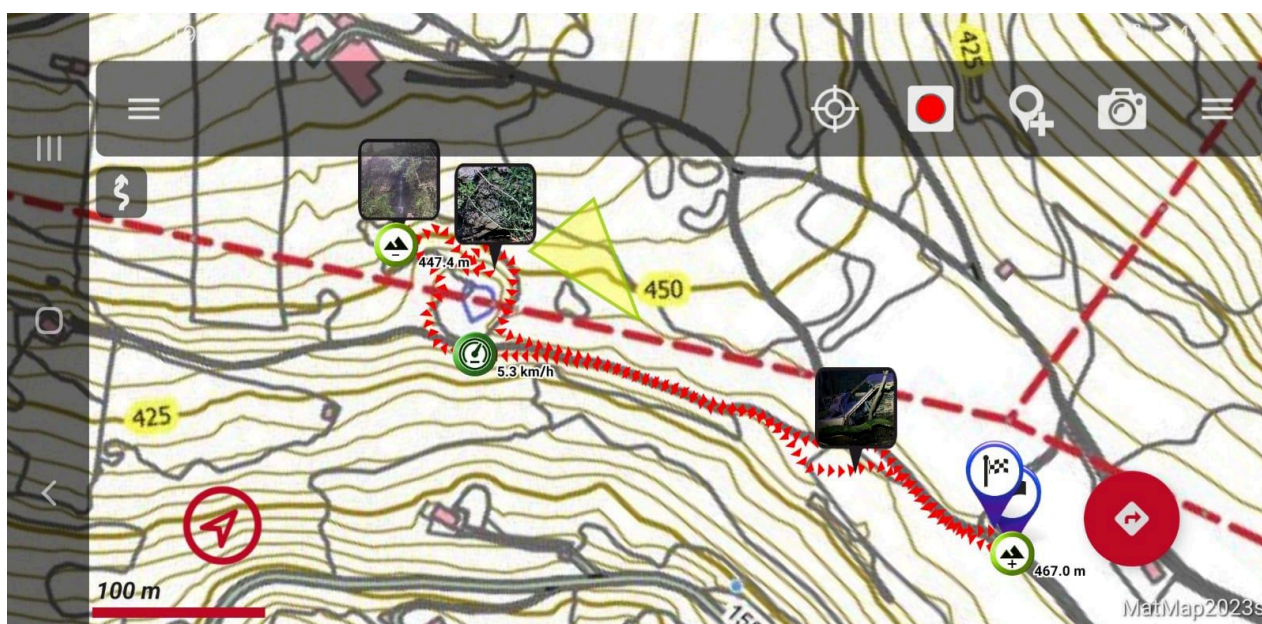
The Spanish club ropes are still on the Small & Grand Slams pitches. We left them both rigged but hooked the Small Slam rope over some projections so we didn't get tangled up in it, and pulled their Grand Slam rope up but it's still attached to the anchors and packed into the bag.

---

20/12/2024 #5455

Di & Si

After fettling gear for tomorrow's trip we had a few hours surface spot holing North of the end of *Mongoose's Don't Jump* and the road to Matienzo. A large sink was spotted at 30T 451829 4798474 alt: 450m it has been wet today though. Although it's around 250m above the top of *Mongoose's Don't Jump*, I wonder if this is the source of the Shrimp Bone inlet? The surrounding area and the impressive depression below this didn't seem to have any 'open' entrances apart from many animal burrows.







*That sink looks a good enough feature to warrant a number:  
**NEW SITE 5455 @ 30T 451829 4798474 alt: 450m***





*Di / Si Did you actually get into the base of the big depression? The track suggests not, but it could have been trees blocking the signals. (Juan)*

Hi Juan, yes I did (Simon) but Di didn't, who the GPS track was from. She traversed the East side of the big depression looking down onto a terrace.

---

21/12/2024 Torca la Decepción ([4732](#) ► [0107](#))

Di & Si

A trip to take gear up to Shrimpbone Aven (the 10m waterfall) and climb into the leads around this area. A 12hr trip. Surveyed 35+30=65m new. Batch no = shrimpboneinlet / 0107-24-06



First we climbed the cascade opposite the foot of the Shrimp Bone aven 10m waterfall, a committing manoeuvre gained a ledge and an etrier on a pull through was rigged to aid the descent. This area is a large calcited boulder choke. A further committing climb above the ledge is possible, but would need protection as it is well coated with mud, from what we could see this looks to be an alcove. Wriggling upstream the water eventually came out of a hand sized slot, maybe removing a boulder above it would provide enough space to progress, or maybe not - there was no draught in this area.



Going up the 10m pitch and at the downstream end of the chamber (which really could do with a name, so we are thinking of calling it Pyramidiot in honour of the original explorers scaling tactics and our efforts some decades later), is a climb up into the calcited boulder choke heading above Shrimpbone Aven. A mix of marginal bolt placements in calcite and free climbing gained the top after 10m, a short climb down into a blind enlargement followed. Space beyond a wedge boulder could be seen, however at least a crowbar would be required to gain entry and digging upwards in a boulder choke with the lack of a draught didn't make this very appealing. Pulling the rope through on two stals and using the Petzl reusable bolts meant no gear at all was sacrificed during this endeavour.





Si in Pyramidiot about to climb.

We had communication yesterday from two Spanish Cavers Sara and Daniel, to inform us that they were also planning to descend Decepción today, to visit Trident and derig their ropes. When we returned to our car at 00:30 we just caught Sara and Daniel who were about to leave, they had had a great and successful trip.

---

## 22/12/2024 [#0039](#) Codisera

Buenos días,

os mando lo realizado desde agosto del 2024. Siento no tener un dibujo de topografía actualizado, está Rafa con ello a fondo, aunque dependemos de su disponibilidad. Dibuja bastante bien y ya tiene casi toda la cueva en "papel".

El avance más importante es que en diciembre hemos conectado el pozo Toni Asensio y la zona nueva. En la próxima visita creo que ya accederemos a la galería fantasma.

Nos queda algún paso muy estrecho por mirar en la zona del tigre. Tiene corriente de aire, pero no volveremos hasta hacer la topografía de la galería fantasma. Creo que conecta con esa zona, por la corriente de aire que hay y por la situación dónde está. Aunque casi mejor es que no conecte, sería algo nuevo.

He contactado con la federación Cántabra para que me cuente si estamos cumpliendo la normativa de visita de Cantabria. Espero a ver que me responden. Por nuestra parte, todo lo que hacemos os lo pasamos y nosotros no tenemos web u otro lugar de publicar. El trabajo lo podéis considerar como perteneciente al proyecto, y siempre con nuestra gratitud de estar ahí.

Un cordial saludo,

Ángel San Juan Gálvez

**Google translate....**

Good morning,

I am sending you what I have done since August 2024. I am sorry I do not have an updated topographical drawing, Rafa is working on it thoroughly, although we depend on his availability. He draws quite well and already has almost the entire cave on "paper".

The most important progress is that in December we connected the Toni Asensio well and the new area. On the next visit I think we will have access to the ghost gallery.

We still have a very narrow passage to look at in the tiger area. It has a draft, but we won't go back until we've done the topography of the ghost gallery. I think it connects to that area, because of the draft there is and the location where it is. Although it's almost better if it doesn't connect, it would be something new.

I have contacted the Cantabrian Federation to find out if we are complying with the Cantabrian visiting regulations. I am waiting to see what they respond. For our part, we pass on everything we do to you and we do not have a website or any other place to publish. You can consider the work as part of the project, and we are always grateful to be there.

Reply:

Hola Ángel

Thanks very much for the information. As far as the Project is concerned, we are happy that you are exploring Codisera and pleased that you are passing on your excellent surveys.

¡Feliz Navidad!

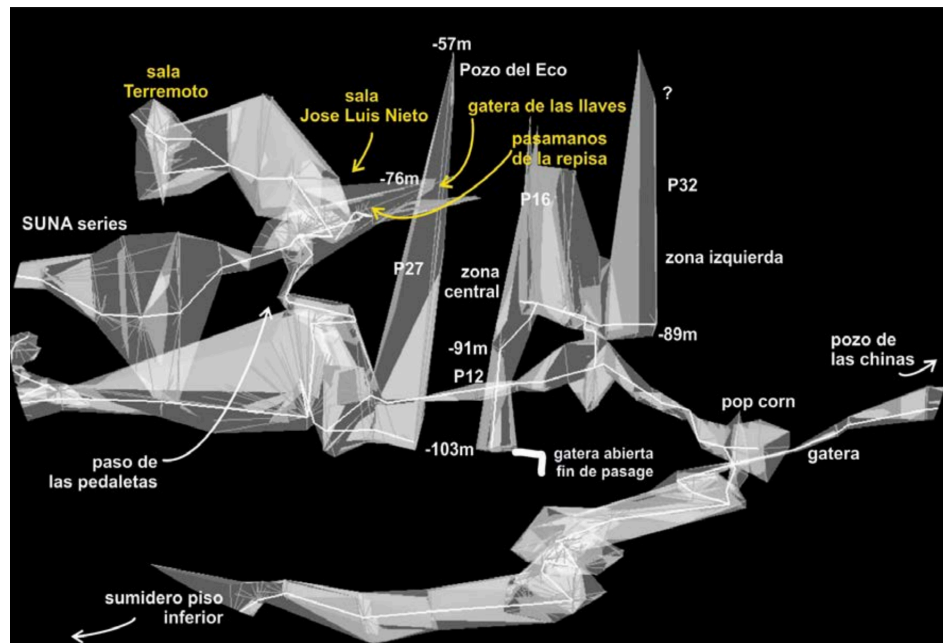
## 10/08/2024 #0039 Codisera

(Translation only. Original in ARCHIVE\Caving-Years\2024\Xmas-2024\0039 Codisera)

Participants: Nacho,  
Irene and Ángel San  
Juan.

We headed towards the José Luis room area to continue with the topography of this room. On the previous outing, Nacho and Susana had installed a handrail above the Chinese wells, which gave access to the earthquake room. This room is very chaotic, with fallen blocks of different sizes. It has two ascending branches, right and left. The right branch is ascending like a tube without curves.

The left one, also ascending, has a low ceiling passage and reaches a small blind well. The ceiling ends at the same height in both paths, and that same height is where all the ascending paths in adjacent areas end. The topography was completed, removing the access handrail. Here we still had to do the topography of the Chinese wells.



Once the documentation part was finished, Nacho began to make the handrail that leads to a cat flap, just above and to the right of the echo well. It is a relatively easy handrail, which starts at the ledge and is about 12m long. At the other end there is an ascending ramp that ends in a cat flap (key flap). When he started to dismantle the handrail, Nacho realized that he did not have the Handy carabiner. He went back to look for it and found his car keys fallen into the cat flap!

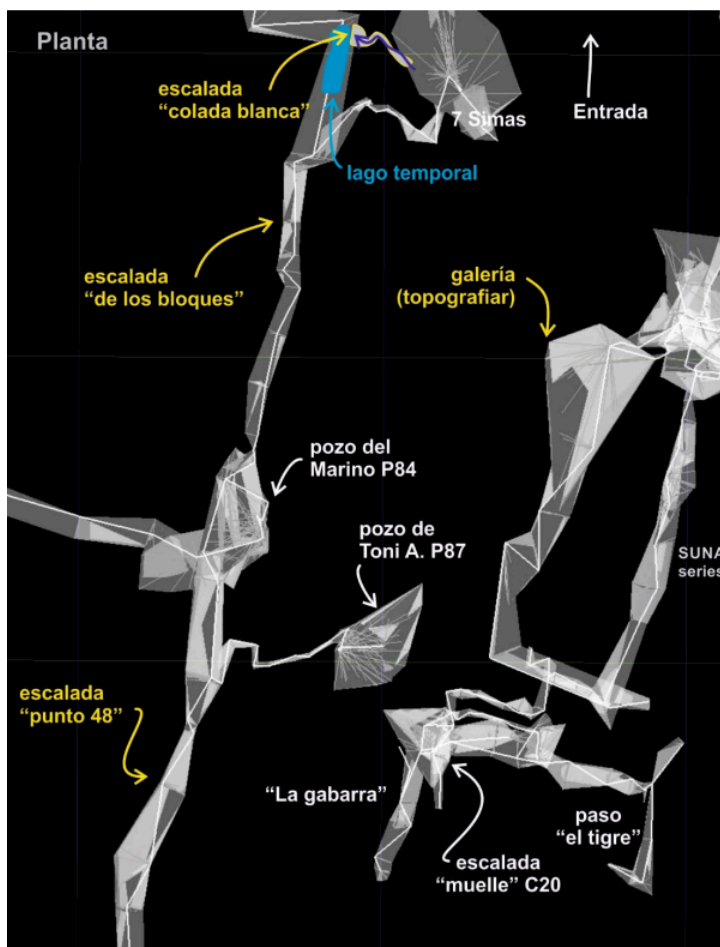
## 19/10/2024 #0039 Codisera

(Translation only. Original in ARCHIVE\Caving-Years\2024\Xmas-2024\0039 Codisera)

**Team A:** Álvaro, Nacho, Ángel: On the first floor, next to topographic point 48, a small climb of about 6 meters was made. It is located on the right side, in the direction of advance towards the interior. A gallery was reached to a small upper meander, with sandy ground, which closed without possibility of continuation. Below the rope that goes up to the meander of the "Toni Asensio" well there is a descending passage. It was again verified that there is no continuation, being a false lower floor.

Further on, in the chaos of blocks that there are after the temporary lake of the gallery of the 400 pesetas, another climb was made. On the right side, in the direction of advance towards the interior, some blocks are overcome to climb to the right. Above a dividing block, which forms a short passage, we go back in the direction of ascent between the blocks. This climb places us close to the roof, reaching some embedded blocks. On the left side, in a 90° turn, a sandy meander opens up. The meander turns horizontally to the right, becoming a cat hole as in the previous case. The ground had deposits of leaves and small elements from outside, probably brought by the air, but it is impossible to continue.

Now, heading towards the entrance of the cave, the climb of the white lava flow began. A fixed rope was left and the continuation of the upper part was pending.



**Team B:** Rafa, Alberto and Irene: The objective was the drawing of the topography from the Chinese well, they crossed the cat hole through the main gallery to the lowest level. Then they continued through "pop corn", from there to the first climb that leads to the pedal pass, the "José Luis" room and the SUNA series. On the handrail of the orange rope, you go down to a gallery where a climb is pending. Right at the base of this climb, at a height of approximately 1.70m, they found a cat hole already explored by Matienzo Caves. This cat flap gives access to a small gallery.

This exploration remains pending.



## 9/11/2024 #0039 Codisera

(Translation only. Original in ARCHIVE\Caving-Years\2024\Xmas-2024\0039 Codisera)

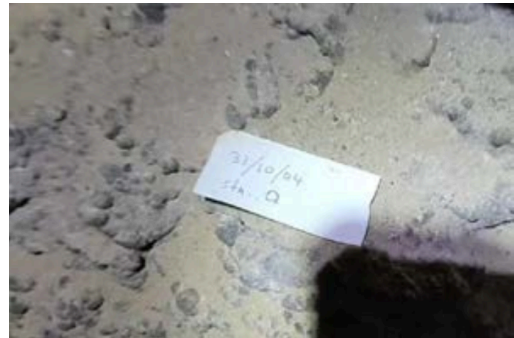
Participants: Susana, Nacho and Ángel.

We headed towards the “José Luis room”, but decided to stay on the old climb that is past the “pop corn”, just after a small stretch of sand. The climb seems to have been done in 2004 by Matienzo Caves Project. The climb has a small blind well below and preserves old spits. Some of them were used to climb up and MMS screws were also used to ascend. Once up, there are three paths:

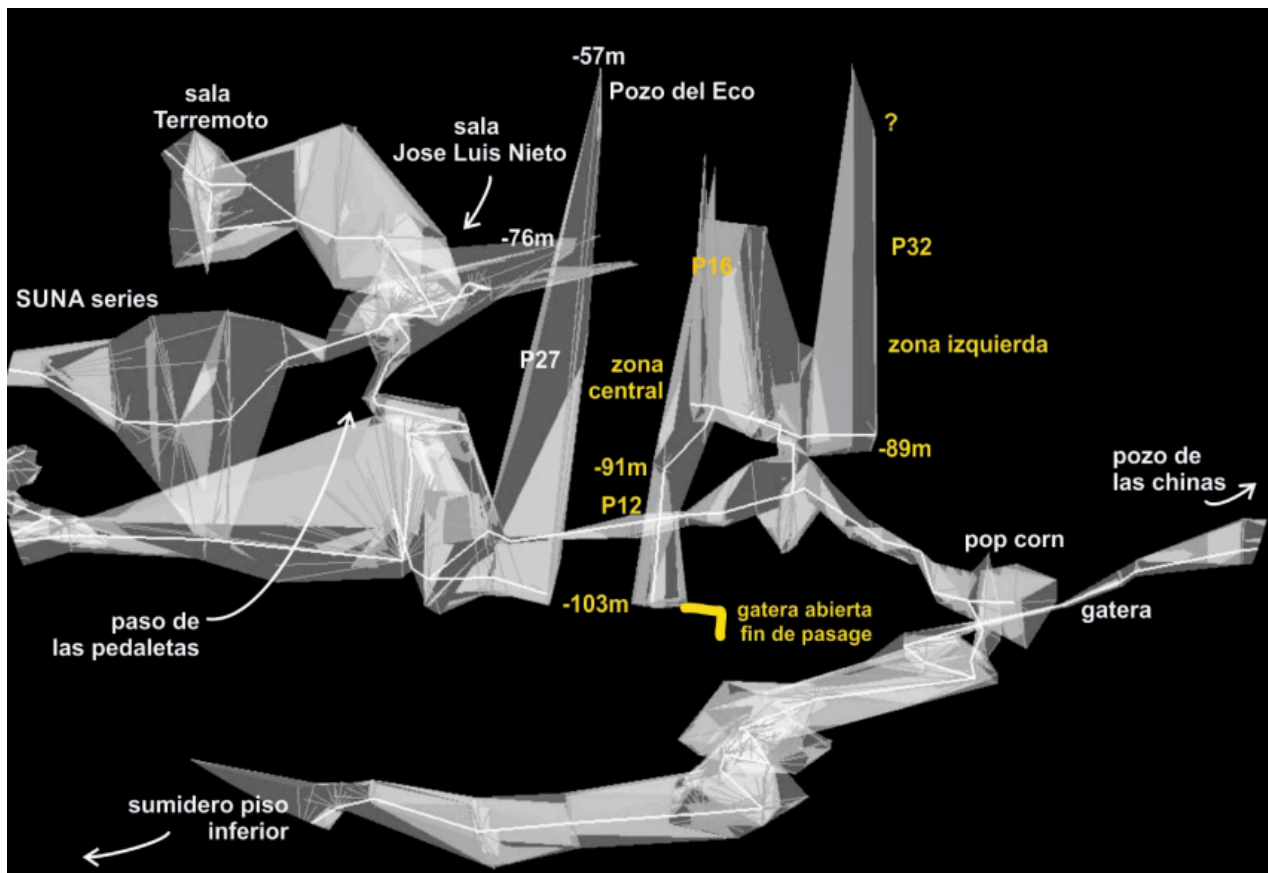
- Left: you access a meander that goes over the gallery and in the direction of “pop corn”. There, a 30m high well was measured with laser. The first part has an easy climb of about 8 meters, but you access a gap that leads nowhere. The well is not climbed and you cannot see if it continues up.

- Right: A small and short meander gives access to two parts. One is a chimney that is blinded. The other is a very narrow descending lateral crack, which connects with the central branch.

- Centre: this branch has a small ramp to reach the base of an ascending shaft, which does not continue at the top. To the right, on a steep descending slope, a joint is reached that collapses into a shaft of about 11m. In the photo you can see a note from the first moment of exploration. At its base there was a blocked cat flap. After almost two hours of work, it was cleared to move on to a descending passage that ends up being impenetrable after 3 or 4 metres of descent.



After surveying this area, a rappel was made from which the material used in the climb was dismantled.



## 6/12/2024 #0039 Codisera

(Translation only. Original in ARCHIVE\Caving-Years\2024\Xmas-2024\0039 Codisera)

06/12/2024 Two work groups are formed:

1: Alberto – Ángel - Rafa: Later, Álvaro and Antonio join the group inside the cave.

a. End of the climb of the white lava flow. In the 400 pesetas gallery, at the 90-degree bend next to the temporary lake, the climb was finished by checking the connection with 7 chasms. A meeting was abandoned to remove the fixed ropes.

b. A couple of steps were placed to make it easier to pass through the handrail of the “pozo de las chinas”.

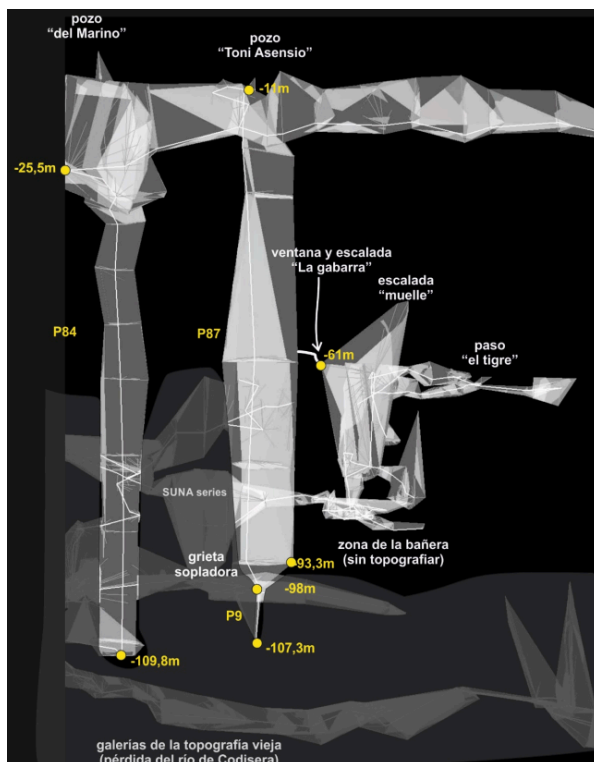
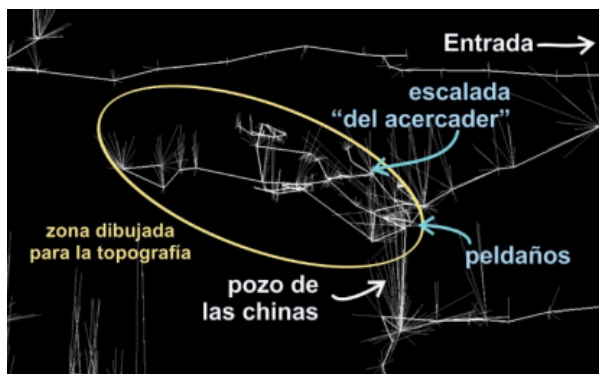
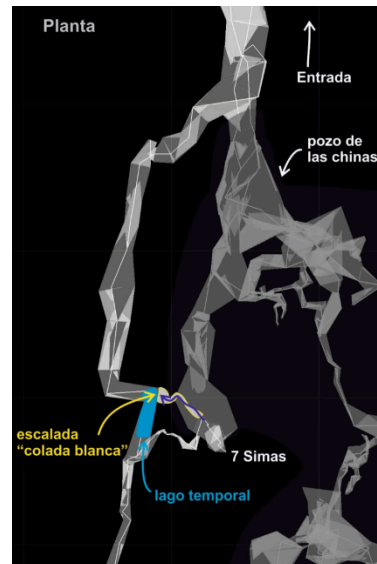
c. The gallery in front of the handrail of the upper part “pozo de las chinas” was accessed. Rafa continued with the drawings of the meanders in that area.

Alberto did the small climb in a meander on the right sector. He called that climb “del acercader”.

Unnecessary climb because it does not continue and because it can be bypassed by a little visible corner. At the end of the high meander there was a large block that blocked the continuation. It was moved and the meander closed.

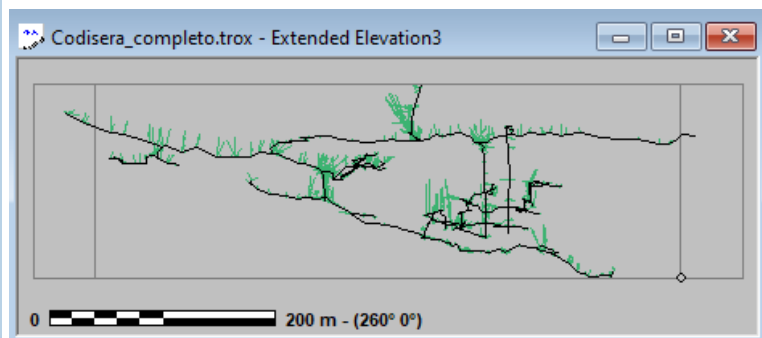
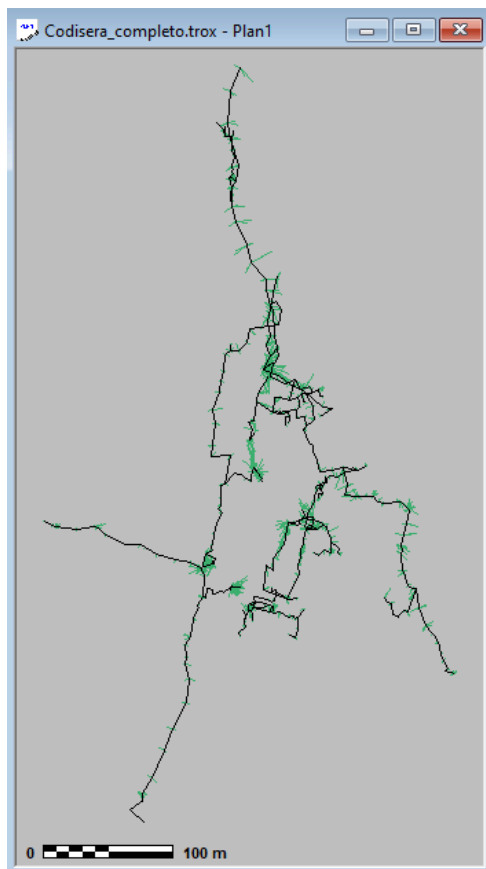
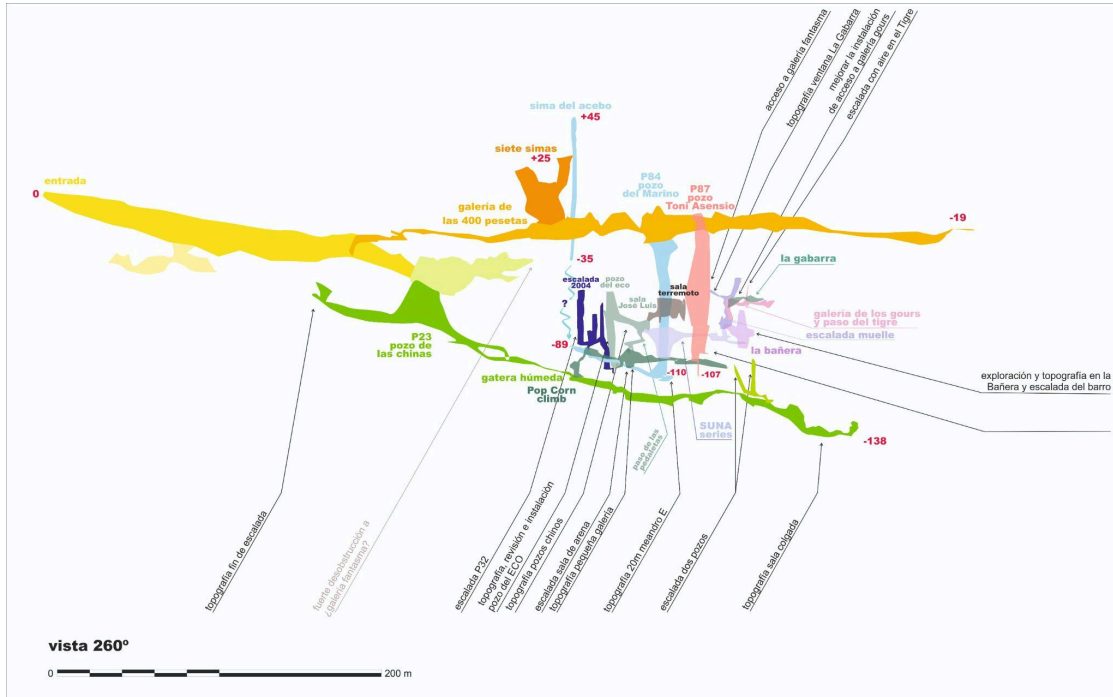
2: Susana, Nacho and Juan: they went to the steep climb at “la Gabarra”. A small, very steep ramp gives

access to a window that connects with the “Toni Asenipsio” well. They went down the well with a 40m rope, leaving just enough rope. Due to the fractions used, the height above the well is about 35m. In front you can see the phantom gallery, the next objective, as well as other small windows. The window, and the levels used, seem to confirm the good topography of the cavity.



22/12/2024 #0039 Codisera

Still to do... and the centre line plan and extended elevation ...





22/12/2024 ([0111](#))

Di & Si

Casa Tomás were doing their last service before closing for the winter this lunchtime. So after a wonderful three course lunch and meeting up with Sara and Daniel again for a nice chat, we had a very wet rummage around the hillside North of Mongoose's Don't Jump.

We located the entrance to 0111, which will probably get descended and surveyed at a later date. Then moving West to a gully and the sound of falling water, we came across a resurgence in the undergrowth which was feeding several water pipes and a water tank 30T 451873 4798404 alt: 426m. This is around 80m directly down the hillside from the large sink 5455 found two days ago and is highly likely this water. Following the gully downstream for 40m it sank in between mud and boulders at 30T 451916 4798402 Alt: 413m. Note: it's been fairly heavy rain all day, so this may not normally be sinking here.

**NEW SITE: 5456 resurgence @ 30T 451873 4798404 alt: 426m**

**NEW SITE: 5457 sink @ 30T 451916 4798402 Alt: 413m.**

*See 23/12, 25/12 and ??? for 0111 update*

---

23/12/2024 [0111](#)? and [1555](#)

Di & Si

Afternoon trip to drop what we thought was 0111 and inspect 1555. surveyed 15m

We parked in the old quarry by the roadside and hacked a path up to 1555 and a short climb into the field above to access 0111 - the entrance we came across the other day, a small hole next to several large limestone lintels covering the bulk of the entrance shaft. A fine pitch of 15m landed on a flat choked floor, littered with snail shells and a marbled newt.

In retrospect this doesn't really match the description of 0111, which in 1981 was reported to be 10m from the road and a 28m (95ft) pitch to a slope to a choke with a total depth of 36m (120ft). The location of 0111 was so close to the GPS of the hole we descended we didn't bother to record it. We'll revisit this area again soon to sort this out.

**NEW SITE 5458 "Not 111" GPS 30T 452138 4798469 alt :407m**







A warm waft was emitting from 1555, and was as described.



Marbled newt found at the base of pitch.

*43 years ago, there was no GPS so the position of 0111 was definitely a guess and put on a 1:5000 map a bit like pin-the-donkey. Ten metres from the road will be approximately correct but, when the road was resurfaced, some widening occurred! Current maps show it 19m from the road.*

*The depth would have been an informed guess from the number of ladders. So it looks like your shaft is a new one and not 0111. The entrance to 0111 could be under a bramble bush. (Juan) (Site 5458, see previous entry)*





## 5/11/2024 #0039 Codisera

(Translation from Notas Complementarias. Original in ARCHIVE\Caving-Years\2024\Xmas-2024\0039 Codisera)

Team: Ángel San Juan, Juan Cruz and Rafa Coronado.

On this occasion, we headed to the "Tiger's Pass", a narrow and short squeeze that appeared to give access to a new chamber or gallery. Previous attempts to force this passage had been unsuccessful. It is located in a very interesting area of the cave, close to the zone known as "The Barge". We traversed this passage by breaking some edges with the help of a drill and wedges. Although access remains tight, Juan and Rafa managed to enter, discovering a new chamber that ends abruptly in an impassable meander.

Between these two chambers, and right at the squeeze of "Tiger's Pass", there is a narrow chimney that seems to have some continuation. During the exploration, topographic measurements were taken and mapping was completed up to the "José Luis" chamber.

## 9/11/2024 #0039 Codisera

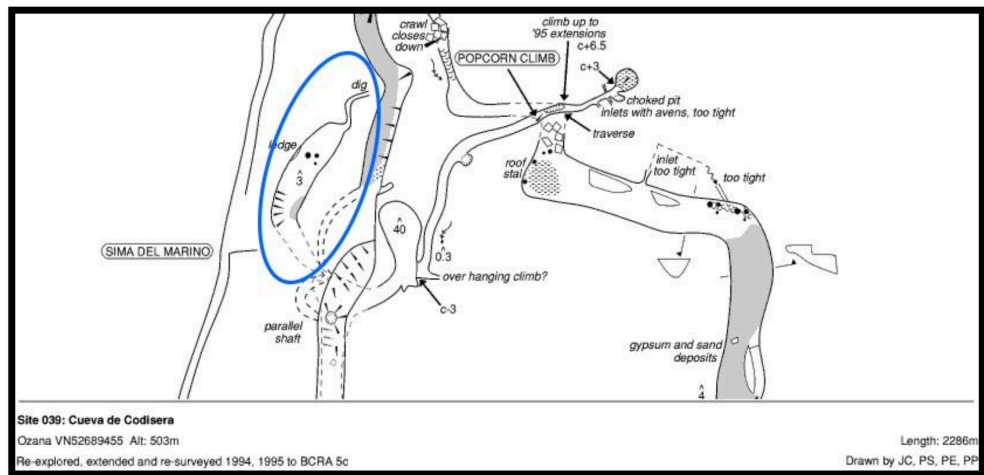
(Translation from Notas Complementarias. Original in ARCHIVE\Caving-Years\2024\Xmas-2024\0039 Codisera)

Team B: Alberto Martínez, Irene and Rafa Coronado.

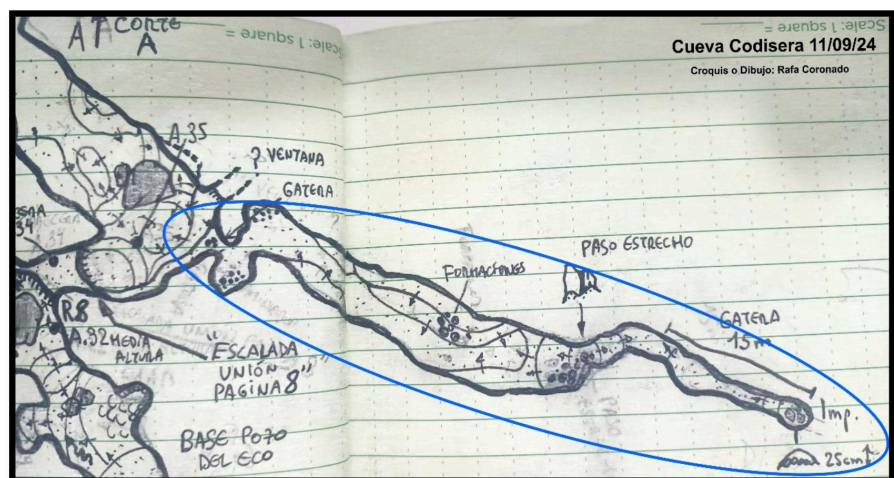
The main objective is to continue with the topographic mapping. On this occasion, we began mapping from the cave entrance, taking advantage of the light emitted by the headlamps of both exploration groups.

Once at the "Pozo de las Chinas", we descended and continued towards the ledge known as "Pop Corn". After checking the time, we decided to continue mapping the lower gallery to its end. This long, descending route took us to the lowest point of the cave. We didn't forget to map two branches that split off from this gallery, where there are still some unexplored areas.

Returning to "Pop Corn", we continued mapping until we reached the climb that gives access to the "José Luis" chamber. Without climbing up, we continued along the main gallery, mapping



Croquis realizado por JC, PS, PE y PP del Grupo Matienzo Caves en 1995.



Croquis o Dibujo realizado en 2024 por R. Coronado. Detalle de la Galería reexplorada.



until the point where it ends, blocked by a chaos of boulders. On our way back, before the handrail of the orange rope, we located a small gap situated on a ledge or cornice 1.70 meters above the gallery floor. This ledge is easily accessible, but the gap is hidden among formations, right in the corner. This small hole gives access to a gallery with various formations attached to false floors and filled with a large amount of sandy sediment and gypsum.

At its end, we found a narrow passage between formations that leads to a crawl space that is quite filled in and obstructed after about 15 meters. We mapped this area and confirmed that it is a gallery previously explored by the Matienzo Caves group and represented in some sketches of the Cave. Until now, we thought this gallery or area of the cave belonged to the upper level "Galería Fantasma" which we haven't yet been able to access.

## 24/12/2024 Torca la Decepción ([4732](#) ► [0107](#))

Di & Si

A trip to the end of Mongooses Don't Jump to climb the aven with the water issuing from it. A round trip for two moderately laden cavers to this point and back is now around 7-8 hours.

The aven - ¡*Gambas!* at the end of *Mongooses Don't Jump* has been climbed and rigged. When Si touched down after stripping the climbing gear and checking the time, two choices became apparent:

- 1) We both go up the rope, start surveying and exploring with a potential very late finish.
- 2) A very fast exit is made, racing to get to Casa German for Christmas Eve last orders. This would mean our friends could also enjoy the 'potential' glory on the next trip to the end.

We decided to take one for the team and only just made it out in time for a Christmas pint!

*What about doing a "simple" water trace from the sink #5456, with a detector in SBI - even right at the end?*

*The large blue container downstairs, by the stairs, in our place is full of OBA and hasn't been touched yet.*

*Pete could probably provide cotton wool and a cage for the detector and certainly has a UV lamp.*

*A control should first be carried out (5 or 6 hours in the water while you're in the cave?) as the house and farm may well have washing machine waste draining underground. Just a thought! (Half a litre should do, although Terry will advise!)*

*(Juan)*

*Thanks Juan.*

*A similar thing had crossed our minds! 👍*

## 25/12/2024 to find [0111](#)

Di & Si

A fine sunny Christmas morning crashing through over-head-height gorse trying to locate 0111, which remains elusive for the moment.

## 26/12/2024 Torca la Decepción ([4732](#) ► [0107](#))

Di & Si

A trip up Shrimp Bone Inlet/Mongoose to explore the top of ¡*Gambas!* Surveyed 121m new = 43m  
Batch no = shrimpboneinlet / 0107-24-07 & 0107-24-08

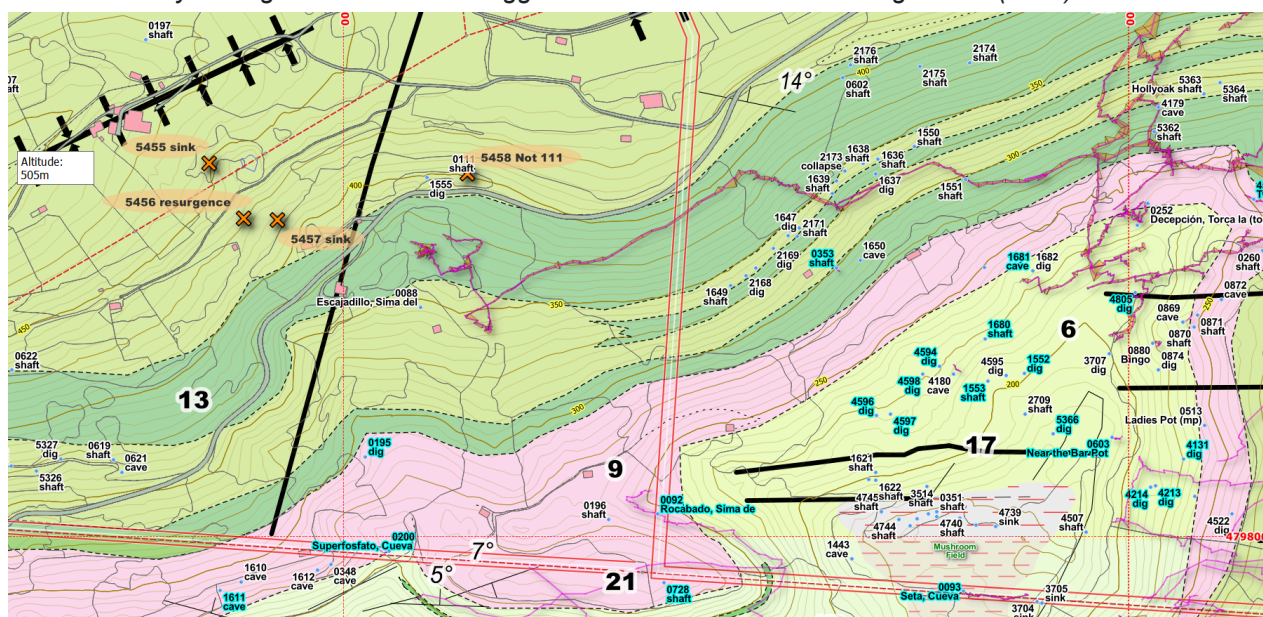
The traverse after the pitch head comes out right next to a near vertical head height and very loose cobble bank, which is rapidly degenerating. This continues up a short but steep rubble slope to where many very large levitating cobbles are stacked in a 'kerplunk' style. Unfortunately, after a few short metres upstream became very low and choked with yet more precariously stacked cobbles. Quietly retreating, a potential traverse at the top of the pitch and back out into the main chamber was spotted and seems to go higher, maybe this will get us past this. We may do this on the next trip before pulling the pitch rope through. Back down in the main streamway we had spotted some inlets which needed surveying, and finally another look at the left hand avens to check for more potential climbing routes.

*The cobbles could be from a large sandstone lens broken up by earth movements then lots of water. Or just stream water. Cobbles suggest a stream, and lots of agitating water though! There's certainly evidence of local earth movements that end of the valley. (Juan)*

*Si / Di : I don't know how far you've got into the QGIS Geology layer and sub-layers, so you might already be well aware of this!*

*With the "Show Map tips" icon highlighted, and with everything within the Geology layer ticked and showing, then choosing the Lithology layer, hovering over a colour should bring up a tool tip. The mauve layer just to the south of SBI is a sandy formation which is quite regionally extensive (around Valline). It appears to be quite thick with the altitudes putting it, say 50m, above your avens.*

*With the "Contacts & Faults" layer highlighted, the Map tip shows an "Easily distinguished fault" just to the west of where you've got to. There's no suggestion about whether it's hading or not. (Juan)*



Thank's Juan, very enlightening as usual!

## 27/12/2024 #5459

Di, Si,

A lovely sunny day for another wander around the hillside North of Mongoose.

South of the road and heading East, we didn't come across anything of interest. Crossing the road to the Northern side under the pylons and headed back having another look for 0111. Just past the top of the old quarry a small hole was spotted looking to be around 5m deep and continuing in both directions, but will require some excavation to enter. 30T 452093 4798462 Alt: 389m. **NEW SITE #5459**




---

## 28/12/2024 Torca la Decepción ([4732](#) ► [0107](#))

Di, Si, Beardy (Paul Swire), Julia Arce Saéz and Chris Scaife

A trip up to Trident Left hand passage for photos, to resurvey Sandstone Passage and push some leads. Surveyed= 291m, New= 73m Batch no = 0107-24-09

**Total length 4VS = 77125m**

An efficient 12hr trip, with five cavers to the end of Trident Left Hand Passage and taking photos on the way back. We then re-surveyed Sandstone Passage taking in the aven at the end of 'JJ Passage' near the run-in at the end. We also descended and surveyed the short pitch into a blind chamber dug into by the previous visitors to this area in Summer 2023.

---

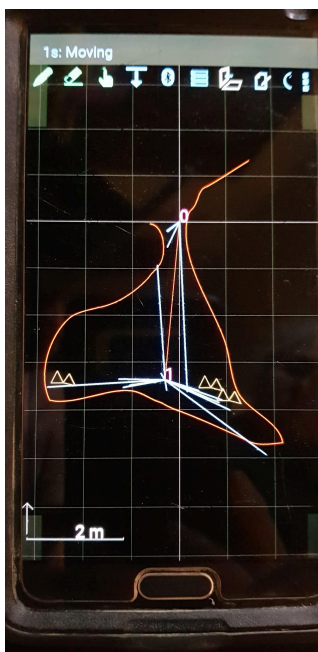
## 29/12/2024 #5459

Di & Si,

Surveyed 3.4m

Dug up the entrance found the other day 'just' big enough to descend, disappointingly this turned out to be 3.4m deep and the continuation too tight to enter.





---

## 29/12/2024 Las Cosas #0084

Chris Scaife, Oscar Scaife, Carolina Smith

A family trip to Las Cosas. Always a fun outing with the little one, but it is a shame there are so many broken stalagmites. We spotted a lesser horseshoe bat and we have filled a recording form [*Juan, do we send it to you or Jess? No info on the website*]. **Send to Jess** - [page here](#)

We also found some old batteries (priced at 5 pesetas!) and we took them out.







## 30/12/2024 Sima de los Churros #0082

Chris Scaife, Di & Si,

Surveyed 34m

A nice shaft with the floor choked with blocks and littered with many bones. Halfway down, a narrow rift with a flat floor was spotted. Beyond the narrowing it looked to be bigger on the other side, however this would have to be capped open







Si and Di at the entrance to Sima de los Churros

Photo: Chris Scaife

---

### 30/12/2024 Cueva de la Puerta [#0024](#)

Peter Smith, Oscar Scaife, Carolina Smith

Peter took us to push the last section of the dig and see what was on the other side. After moving some rocks, while Oscar entertained us with Christmas songs, Carol went through the squeeze. Followed by Peter and Oscar after an initial exploration. The dig squeeze leads to a stream passage, about 1m high, that after a few bends (and passing a few small inlets) ends in a sizeable chamber with a large flowstone dome. To the left there is a blind aven and what looks like a run-in. Over the flowstone dome there is another blind aven and a tall rift that seems to continue. To the right there is an oxbow that, I think, connects with the rift and an inlet with flowstone floor, which was explored by Oscar. We think we went in for about 50m, but we didn't have any measuring devices or a camera. A project for Easter 2025.

---



## 31/12/2024 Torca la Decepción ([4732](#) ► [0107](#))

Di & Si

A trip to Trident to push several leads in Sandstone Passage and resurvey Double Decker.

Surveyed= 489m new=40m

At the junction near the end of Sandstone Passage, the loose inlet/shaft to the West was descended to find it chokes up at 8m deep. The passage continues in a Westerly direction over some deep holes in the floor, the last one being the deepest. This was descended to a sloping muddy ledge 10m down using natural belays and an SRT kit fashioned from a sling, large crab and micro traction. A further drop was distoed to at least 16m however, there were no natural belays available to continue the descent and the bottom could not be seen from the ledge.

We then re-surveyed DoubleDecker to the top of the 7m pitch down at the end, but didn't have any gear to descend it. The pitch up to the continuing passage on the other side looks to have been climbed by one person.

---

## 1/1/2025 #[0869](#), [0871](#), [0880](#)

Di & Si,

A nice sunny New Year's Day scamper on the Eastern flank of the Mushroom Field. Surveyed 0871=3m

Took some underground photos and video of 0869 for the website. Located 0871 just down the hillside and to the right of 0870, this is a 3m deep shaft to a choked floor, however a small hole in the floor and solid looking limestone was measured at 6m deep and seems bigger below. This is a reasonable capping job and would make a grand dig, we plan to return to this later on in the year. On the way back we had a look around 0880, what a lovely little cave where we saw a fine snail and a bat.



0871

---



2/1/2025 #0870

Di & Si,

Returned to the Eastern flank of the Mushroom Field to drop and survey 0870.

Surveyed 12m

The floor of this shaft is packed with bones, rusty tin cans of varying sizes, many broken bottles, some shoes and an old enamelled pan. We had planned to carry on along the hillside, but as this was such an intriguing spot we spent the afternoon digging in the floor of the shaft. It may repay further attention, however it would need a lot of debris including broken glass removing.

(See #1289 - This rubbish is likely to be a midden / household rubbish dump for a nearby occupied cave / cabaña. Have you told Pete? I'm not sure if this would be classified as "archaeological" with you having to stop digging and inform the authorities. Pete will know. Juan)

---





### 3/1/2025 Torca la Decepción ([4732](#) ► [0107](#))

Di & Si

The sunny weather has finally disappeared, so a trip up Shrimp Bone Inlet/Mongoose to try and climb higher from the top of *Gambas!* back into the main aven and bypass the cobble choke, also climb the left hand aven. It didn't go! A 17hr trip Surveyed 5m

From the top of the previous climb; a precarious traverse back out into the main aven, in poor rock and cluttered with mud for around 5m, then an ascent of the inevitable very loose and steep rubble slope with enormous perched boulders. Reaching the back wall and solid rock, a further awful vertical climb up in the corner over stacked boulders gained a chamber, this is above the cobble choke where we had got to on the previous visit. This chamber was also blocked with further run-in of sandstone boulders, a free climb of around 5m above the entry point also choked in the same style. Rigging a rope for a free hanging descent, we then moved onto the larger left hand aven to climb the next most likely looking spot. Very swift progress was made using the Petzl reusable bolts, to where they were used up at around 15m taking less than 20 minutes. Continuing with thru-bolts was much slower, until another enormous and menacing levitating wedged boulder 3mx6m was reached at just over 20m. Wriggling up through a hole to get on top of it, the aven continued above but also seemed to be choked with more huge menacing sandstone boulders.

As it was approaching midnight with a 4hr journey out, we decided to leave *Shrimp Bone Inlet/Mongoose's Don't Jump* at that for the time being, the three scaled aven's have been left rigged with free hanging ropes on stainless steel thru bolts/hangers.

Packing all the gear up into two massive heavy bags we set off on the journey out, getting back to the bar at 04:00 after a 17 hr trip.

---

### 1/1/2025 Walk around Codisera area #[0468](#)

Good day for a walk to enjoy the sunshine while it lasted. Only contribution is a photo of possibly site 0468, but at a slightly different location: 452485 4794583. PS

---





4/1/2025 #[1064](#)

Di & Si

After a long and arduous trip the day before, we both felt like battered scampi, however an unforecasted sunny afternoon had materialised so we went for a scamper below the crag of 0565 Cueva de los Tres Niños.

0245 couldn't be found, but we did locate 1064; a choked 5m shaft containing a goat skeleton, constricted to start but does enlarge below. Surveyed 5m







---

5/1/2025 Torca la Decepción ([4732](#) ► [0107](#))

Di & Si

A trip to Armageddon to re-survey, take photos and generally have a good look around.

Re-surveyed=450m, new =145m



Re-surveying from Judgement Pitch to the start of Armageddon choke, following the main route and NE wall and then back along the SW wall.

6/1/2025 #[0707](#), [1222](#),

Di & Si



After the Kings fiesta we headed off to look for 1222 as the undergrowth is as low as it will get at this time of year. 0707 was found under a bush, photographs taken but not descended after reading the description, it looks much the same but 2m fuller with rubbish. After much searching we didn't come across 1222; looking at the past logbooks I couldn't find any original reference of the description for 1222 or it being designated a number, 1221 was allocated in Dec 1996 and 1223 in March 1997 nothing in the log books inbetween.



0707

During our scamperings a new hole was discovered at 30T 451410 4797518 alt: 207m **NEW SITE 5460**  
This is a descending body sized tube which is still to be descended.



*Re. #1222 This appears to exist 'cos it's on a card in the card index. The Xmas 96 creation says: "shown on map only" so there was no log book entry. Description is good though! It might be easiest to first locate the large entrance to 0091 (by dropping down over rubbish below the bend) then head southwest for 50m and uphill slightly! (Juan)*

Luckily, I did locate the entrance to 0091 and did exactly what you suggested. We'll be going back to drop the new hole and probably have another go at trying to find 1222 now you seem confident it should be there somewhere.





---

## 7/1/2025 Torca la Decepción ([4732](#) ► [0107](#))

Di & Si

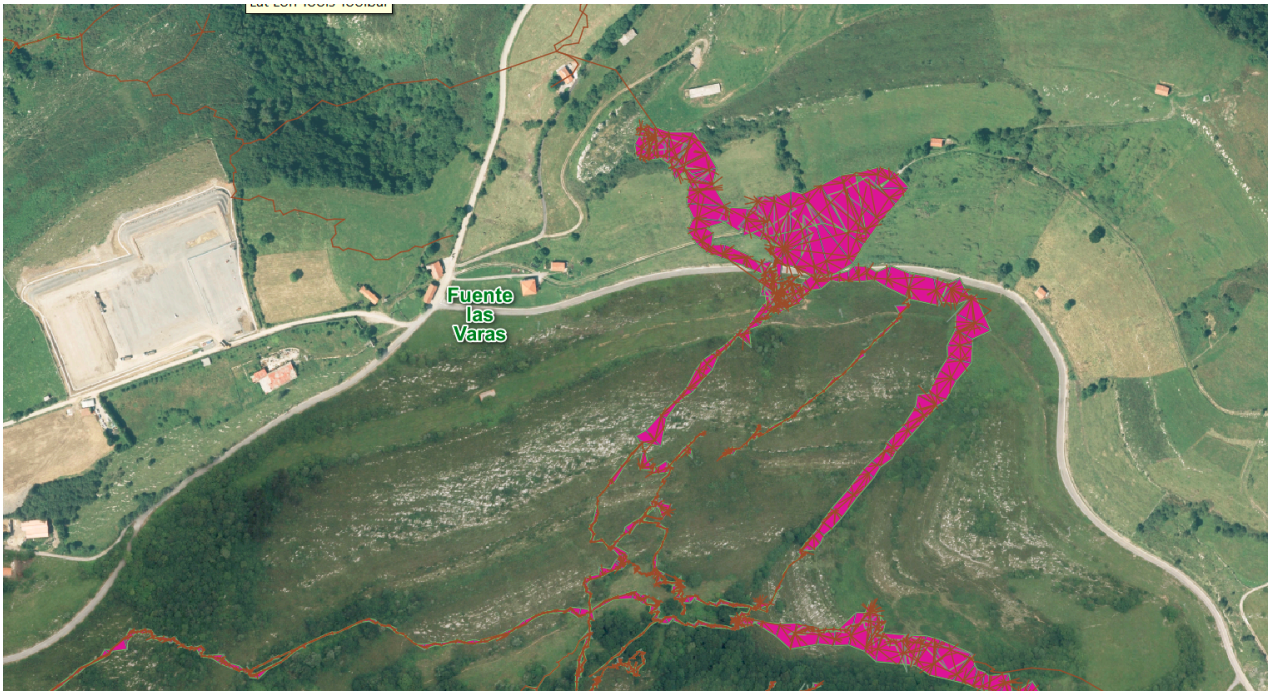
A trip to retrieve the rest of the gear left at the top of Dealers Choice and continue resurveying in Armageddon. Surveyed new = 695m

After retrieving and cleaning the rest of the Shrimp Bone climbing gear, we arrived at Armageddon and surveyed from the top Judgement pitch, up the massive boulder pile and round the area above.

Then moving upstream we had a look round the NE wall, where it isn't solid but another enormous pile of boulders. At the left hand side of this a series of very loose climbs were pushed for 26m vertically '*The ace Alli*', eventually emerging into a very large breakdown chamber '*el Gordo*'. We had to survey round the edges of it as the walls were often beyond the range of our 120m disto. Rough initial dimensions are 166m long and up to 100m wide with an average of over 60m wide, the general slope is around 23° and roof height of 50m in places.

After the inaugural lap, no obvious alternative ways out of the chamber were seen.






---

8/1/2025 #[0091](#), [1222](#), 5460

Di & Si

We had a look round 0091 an interesting cave, the dig at the rear right - top of the slope and then down a climb was draughting. We then contoured round 50m from this entrance and slightly higher to the location of 1222, we've well trampled this area over the two visits and this cave remains elusive. At the new shaft (#5460) found the other day, a ladder and lifeline was rigged after more excavation. Unfortunately it was only a few metres deep! Surveyed 3m

---

9/1/2025 Torca la Decepción ([4732](#) ► [0107](#))

Di & Si

A tourist trip to visit the newly discovered el Gordo and continue with the survey of it. Also derigging Small and Grand Slam pitches leaving the fixed hangers. Surveyed new =85m

Reaching Armageddon we surveyed a short sandy passage just off the main streamway and then a huge ascending boulder pile, the top of which is very close to the Western end of el Gordo. Returning to the new chamber, surveying was finished whilst taking some photos and video. After a second lap of el Gordo, no other exits other than the way in have been spotted, any likely looking places all seem to be heading back to Armageddon.

Prussiking out of Torca la Deception for the final time for this season, the ropes were derigged for a much needed wash leaving the fixed hangers in place.



El Gordo

A previous contender for biggest chamber might have been #0084 Cosas, about 100m x 60m x 20m highest point. (JC)

---

10/1/2025 #[5052](#)

Si & Di

After packing the car ready for the ferry tomorrow, we had a nice afternoon walk over to 5052 with a strong magnet on the end of a long piece of string to attempt to retrieve my lump hammer, which escaped down a hand sized rift during our autumn trip. Unfortunately, it seems to be hopelessly lost under the digging debris.

---

Di & Si total surveyed for Christmas 2024 = 2275m (2201m in Hoyuca)  
'new' or previously unsurveyed = 1198m (1151m in Hoyuca)

---

12/1/2025 #[2414](#)

Should be 2 codes as it's 2 caves. (Actually 3) Shafts nearby are 2976 and 2977.

Survey versions appear to disagree with the cliff face possibly in the wrong place. Given this and the other holes marked on the 2008 survey (2976, 2977) the whole area needs a good look at and surface survey.  
[Phil]



Suggest 1st cave found (crawl to rift) is **5461**; the small 2nd cave behind a fridge door is **5462** and the main wet, dig with shafts remains as **2414** [Juan]

**2414** L=34m d=14m 30T 0452359 4801077 ^264m

**5461** L=38m d=4m 30T 0452363 4801070 ^263m

Those above were surface surveyed from a GPS position

**5462** L=3m 0452358 4801080 ^264m guestimate

The 2008 drawn png is wrong. The Surverx file is 'correct' - but 2414 and 5461 should eventually be separated.

## 28th January 2025 [0780](#)

.Kml and .tro (Visual Topo) files received for Corcada from Guy. The Karsteau site has more up-to-date details.

## 2nd February 2025 [0788](#)

Check site 0788. Originally said to be in Bosmartín, the current GR puts it around Cubija. Card index suggests GR could be

0449678 4797571, i.e. 2km to the north.

Changed - now close to 0787, over Wessex Inlet in Cobadal.

## 3rd February 2025 [0895](#)

Change database / map coords of 0895 to those documented in L21C



## 10th February 2025

A list of sites from the FCE in our current and previous permit areas that could be "opened up" to other cavers and be explored without a permit (including the MCP when we haven't a permit at the start of the year.) Other caves could be Decepción and Giant Panda.

TRAVESÍA TORCA DEL MOSTAJO-TORCA DEL REGATÓN MATIENZO-RUESGA

TRAVESÍA OÑITE-TORCA DE "EL SEDO" MATIENZO-RUESGA

TORCA LA VACA ENTRAMBASAGUAS

CUBÍO DEL LLANÍO SOLÓRZANO

SIMA 415 MATIENZO-RUESGA

CUEVA DEL MOLINO MATIENZO-RUESGA

SIMAS DEL PICÓN MATIENZO-RUESGA

CODISERA MATIENZO-RUESGA

TORCÓN DE CALLEJA REBOLLO MATIENZO-RUESGA

CUEVA DE LLUEVA O COVARÓN VOTO

## 20 Feb 2025 site [5045](#)

5045: Phil, Andy, Pete, with Guy and David from Arredondo. Some progress was made at this dig, which hadn't been touched for a couple of years, mostly by removing rock in the floor to make some space in order to attack the flowstone at the current end. That might be done most effectively with a jack-hammer.

---

## 20th Feb 2025 site 0105 ✓

At Christmas Lank sent this photo he said should possibly be in the stals section on the website.

The information he gave was: "You may remember it is in a side passage near Las Playas in the bigger upper passages in Riano (Canaveral Passage) I may be exaggerating at 10cms high."



---

## 22nd Feb 2025 [5135](#)

Daved Barrett - 2 photos of the entrance to Cueva de la Rasa (5135 - SCD #3148)

---

## 23rd February 2025 4 Valleys System

(Heart of an email from Simon Cornhill with additions and amendments to the 4VS)

### **Uzueka Christmas period survey**

#### **Centreline added:**

- 0107-24-06 survey climbs around Shrimp Bone Aven,
- 0107-24-07 Mongoose - Gambas climb in Mongoose,
- 0107-24-08 Mongoose - inlets from Mongoose to Stand Up cairn
- 0107-24-09 Trident - Sandstone Passage resurvey
- 0107-24-10 Trident - Double Decker resurvey
- 0107-25-01 Mongoose - Traverse at the top of Gambas
- 0107-25-02 Armageddon - resurvey of Armageddon from Judgement pitch upstream to the start of the choke, The Ace Alli climb and El Gordo

#### **Superseded Centreline commented out:**

- Trident - Sandstone Passage original survey,
- Trident - Double Decker original survey,
- Trident - part of Macehead which has been resurveyed,
- Removed parts of Mongoose which have been resurveyed,
- Changed resurveyed part of *Armageddon To Rocky Horror* to duplicate,



**Tidying up the structure of our previous Armageddon and Rocky Horror survey batches:**

As we've been following the standard Matienzo way of naming survey batches, (by the way are you ok with this or would you prefer a meaningful name for each survey batch?) it seems like a good idea to follow what you have been doing, as in group them together in a sub-area survey. *Trident* and *ShrimpboneInlet* are already done, so I've created sub-area surveys for; *Mongoose*, *Armageddon* and *RockyHorror*, moving the relevant centrelines into them. To keep things working the scenario *4valleys-lite.svx* will require some equates modifying:

*4valleys-lite.svx* lines 18 will need to be modified from:

\*EQUATE 0114\_Llueva.Part2.414 0107\_Uzueka.RockyHorror.313 to

\*EQUATE 0114\_Llueva.Part2.414 0107\_Uzueka.RockyHorror.original.313

also *4valleys-lite.svx* line 22 will also need modifying from:

\*EQUATE 0252\_Decepcion.0252-22-02.7 0107\_Uzueka.0107-22-01.8 to

\*EQUATE 0252\_Decepcion.0252-22-02.7 0107\_Uzueka.Armageddon.0107-22-01.8

also *4valleys-lite.svx* line 23 will also need modifying from:

\*EQUATE 0252\_Decepcion.0252-22-01.361 0107\_Uzueka.ShrimpBoneInlet.0107-22-02.361 to

\*EQUATE 0252\_Decepcion.0252-22-01.163 0107\_Uzueka.ShrimpBoneInlet.0107-22-02.163

As you have no doubt spotted, I've included a change to where Deception Joins Uzueka at Dealers' Choice, which brings us to the next section – again I'm really sorry about this...

**0252 survex files – major blunder by me 🤦**

Unfortunately, I think what has happened here, is I foolishly forwarded onto you the survex archive *0252-Archive 241128.zip* from the main Matienzo expedition data set without thoroughly checking it first. So sorry about this as it's caused you much unnecessary repeated work, not to mention making a right complicated mess of things. This was very sloppy of me and quite out of character. Although the *0252-Archive 241128.zip* contained three missing surveys from 2023, it did not have the various tweaks and fixes both you and I had implemented (the Deception/Uzueka 20m error had returned too because of a missed leg!)

Dare I suggest we go back to your original single survex file structure with the separate surveys nested inside it and add in the missing bits of survey to this, then update the Main Matienzo data set with that? The 'hopefully' now correct *0252.svx* file is attached.

**0107 Therion drawings commented out:**

To prevent the above commented out centreline sections and creation of sub-area surveys breaking the Therion drawing, I've also temporarily commented out in *Uzueka\_MAP-MainRiver.th* all of the drawings/joins/scraps I've added using '##' and putting a comment on each line to make this really obvious. **These changes have already been submitted to your subversion archive**, I'll gradually bring the relevant bits back in when you've committed the updated Survex centreline and reprocessed the Therion backbone. Which will also need the two Deception/Uzueka connection equates modifying, this updated file is attached too.

**Therion centerline - 0107\_therion.svx**

If you decide to revert the Deception survey back to the original single file, then to make the Therion centerline .3d compile the two equates in *0107\_therion.svx* needs to be changed from:

\*EQUATE 0252\_decepcion.0252-22-01.361 0107\_Uzueka.ShrimpBoneInlet.0107-22-02.361 to

\*EQUATE 0252\_decepcion.0252-22-01.163 0107\_Uzueka.ShrimpBoneInlet.0107-22-02.163

and

\*EQUATE 0252\_Decepcion.0252-22-02.7 0107\_Uzueka.0107-22-01.8 to  
\*EQUATE 0252\_Decepcion.0252-22-02.7 0107\_Uzueka.Armageddon.0107-22-01.8  
And finally this bit is really for information:

### **Subversion conflicts and Shrimpbone Inlet**

Your mention of a potential conflict with *UzuekaPlan\_ShrimpBone.th2* now makes sense, I'm still not completely straight with all of this but pretty much getting there...

I've recently expanded my subversion knowledge, as after your last data commit in December and I subsequently did an SVN update, some crazy things happened to my local copies of *0107.svx*, *0107\_therion.3d*, *UzuekaPlan\_ShrimpBone.th2* and *0252.svx*. Duplicate but modified copies with the added extensions of *.mine*, *.r314* and *.r321* were created and the actual files were corrupted by extra lines being inserted in many places, stopping my copies of *svx* and *Therion* compiling!

As I hadn't experienced this before, after brief panic and verifying my PC hadn't picked up a virus or malware, I realised you had edited the same files I had in the same places. Probably not helping and inadvertently causing my issue, I had pre-prepared but not committed the edits you have also changed calling the updated centrelines for the existing Shrimpbone Inlet drawings, as it would have broken the *Therion* drawing before you updated the centreline. Making it worse for myself I had also started drawing up the *ShrimpBoneInlet* resurvey too, but not committed it pending the updated centreline -doh! 😞.

I've noticed you are possibly doing a similar thing - drawing up an uncommitted file, as I've had to comment out *#input Uzueka\_MAP-GorillaWalkTo2ndRiver.th* in *Uzueka\_MAP-Complete.th* to make my local *Therion* drawings compile.

And definitely the last thing!

### **4valleys-full.svx not compiling**

I noticed that the *4valleys-full.svx* didn't compile for me as a *Fresnedo2* station name had a '.' In it.

I've changed *0841-15-01.svx* line 26 from:

*;15 1.14 8.77 309 -2* to

*15 14a 8.77 309 -2*

And also in *0841.svx* line 1138 from:

*;\*EQUATE 0841-15-01.1.14 0841-13-01.14* to

*\*EQUATE 0841-15-01.14a 0841-13-01.14*

Phew! I feel that I've been hacking around with your centreline rather a lot here, but I've tried to thoroughly go through it all and fix any issues to save you the hassle (hopefully!) All of the files which have been altered are attached for you to have a look at before committing them to your archive.

Anyway, I Hope that this is all OK and I haven't gone too far with all of this.





## **MATIENZO CAVES PROJECT**