

LOGBOOK

Year: 2021

Season: Summer

Logbook pages scanned to jpg then combined into a pdf file using <http://smallpdf.com/>

Juan Corrin, September 2021

SUMMER 2021

①

From: r.skorpka@btinternet.com,
To: uzueka@aol.com,
Subject: Re: Vallina diving
Date: Sat, Jun 26, 2021 1:16 pm

733

Thanks for the info Juan. I have just had a week at Vallina, but several days it was completely flooded. Even Pedro described the weather as 'truly awful'. I carried a lot of gear in as far as the streamways, and left a note for the Catalans (I just missed them). They had re-rigged the pitch off two seperate hangs, and cut out and removed my (exped) rope, the cheeky monkeys.

The covid measures were easy to sort out, its just a bit of extra arseache but I have got an early release test after 5 days. We are then going back in early July....this is more dependant on the french as we have the dog and will need to travel thru france, a big question there.

The spaniards are well happy so far to welcome tourists, covid rates are still lower there than here, and they are cracking on with the jabs. This whole amber country nonsense is a complete load of bollocks.

so there we go, may see you in July.

Rupe

No grid ref = No cave code yet ✓

LC-215 Cueva de las Ilusiones • 4 julio, 2021 • Comentarios desactivados en Cueva de las Ilusiones

Eso mismo es lo que llevabamos cuando nos dirigiamos hacia una cueva que la tarde anterior habían encontrado dando un paseo por un eucaliptal recién cortado en Monte Llusa, Toñín y Noelia.

La cueva es en su totalidad un tubo a presión con fuerte pendiente, bastante concreccionado y de cómodas dimensiones, el cual bajabamos pensando que en cualquier momento aparecería un pozo o una galería horizontal. De repente, tras aproximadamente 60 metros, el tubo se taponaba y se acaba. Así sin más. La Cueva de las Ilusiones.

<PHOTO>

LC-215. Cueva de las Ilusiones

Así es la espeleología. Unas cuevas se acaban y otras también.

Topografiámos y salimos, y comenzamos a subir monte a través. Por lo menos parece que ha dejado del llover. Nos dirigimos hacia una torca que tenemos instalada hace tiempo para recuperar una cuerda que habíamos dejado en su cabecera para proseguir su exploración.

Cuando nos encontramos casi llegando, vemos en el fondo de una dolina, un pequeño soplao. Comenzamos a quitar tierra hasta poder entrar a él. Consta de un estrecho pozo, que arranca tras un pequeño resalte de entrada, de unos 5 metros de desnivel, que acaba en una diaclasa la cual se va estrechando progresivamente. Optamos por subir, ya que una de las paredes es un montón de tierra y grandes piedras totalmente inestables que se han ido acumulando cayendo desde la entrada. Al subir vemos en el resalte un antiguo spitz que nos deja un poco perplejos. Es curioso como se puede ir taponando un agujero en pocos años.

<PHOTO>

LC-216

Aprovechamos a comer y llegamos a la torca para quitar la cuerda. Cuerda que ha desaparecido junto con los mosquetones. Que extraño. Bueno, ya sabemos desde hace tiempo, que en Monte Llusa hay unos cuantos ojos que te vigilan...

Participantes: Toñín, Noelia y Gustavo

Translating →

Google translate

LC-215 Cave of Illusions • July 4, 2021 • Comments Off on Cave of Illusions

That is what we were wearing when we headed towards a cave that they had found the previous afternoon while taking a walk through a freshly cut eucalyptus forest in Monte Llusa, Toñín and Noelia.

The cave is entirely a steeply sloping pressure tube, quite concrete and of comfortable dimensions, which we went down thinking that at any moment a well or a horizontal gallery would appear. Suddenly, after approximately 60 meters, the tube clogs and runs out. Just like that. The Cave of Illusions.

<PHOTO>

LC-215. Cave of Illusions

This is caving. Some caves are finished and others too.

We surveyed and left, and began to climb the mountain through. At least it seems that the rain has stopped. We go to a tower that we have installed for a long time to recover a rope that we had left at its head to continue its exploration.

When we are almost arriving, we see at the bottom of a sinkhole, a small blowhole. We began to remove dirt until we could enter it. It consists of a narrow well, which starts after a small entrance projection, of about 5 meters of unevenness, which ends in a joint which gradually narrows. We chose to go up, since one of the walls is a pile of earth and totally unstable large stones that have accumulated falling from the entrance. As we go up we see an old spitz on the ledge that leaves us a bit perplexed. It's funny how a hole can be plugged in a few years.

<PHOTO>

LC-216

We took the opportunity to eat and we reached the torca to remove the rope. Rope that has disappeared along with the carabiners. How weird. Well, we have known for a long time that in Monte Llusa there are a few eyes that watch over you ...

Participants: Toñín, Noelia and Gustavo

7/12/2021

11 July 21 Subphone Ent. Phil and Chris Cam

From: papard@easynet.co.uk,

To: uzueka@aol.com,

Subject: 11 July 21 Subphone Ent. Phil and Chris Cam

Date: Sun, Jul 11, 2021 7:51 pm

4536

Cut down lots of brambles and vegetation to make a route to entrance. Its clear nobody has been to cave for some time. Now there is an acceptable route to entrance. As normal good cold draught, and all down hole looked OK. It seems to be home to a few slugs!

Phil
Juan

18/1/21 Photos from Phil P. for sites

0587, 0588, 0589, 1633, 4200, 5077 new, 1890

All in El Naso/Bormartin



17 July 2021 Phil Papard – Walk north of parking spot at high point of Bosmartín road,

5077 Cave 30T 450403,4797331 Alt 497
Small cave at base of second cliff line above road. Cave is about 2m to possible dig, but on a warm day no draught was felt.



1890 Cave

Found shakehole at gps location but could not see bottom due to brambles that needs gear and clothing to clear (1st pic). A second shakehole (2nd pic) is 10m to south, this would be best looked at with rope due to its steep sides.



1633 haft

Found hole at gps, now full of brambles that would need clearing to gain access.



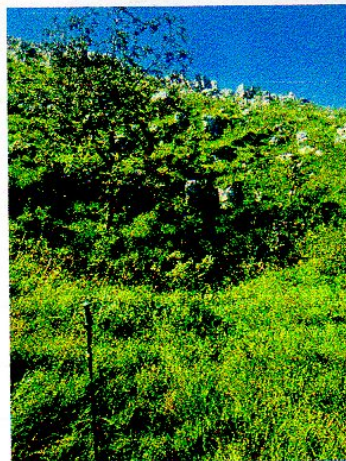
0587 Shaft

At gps hole below 2m rock face, not deep but looks to be correct hole.



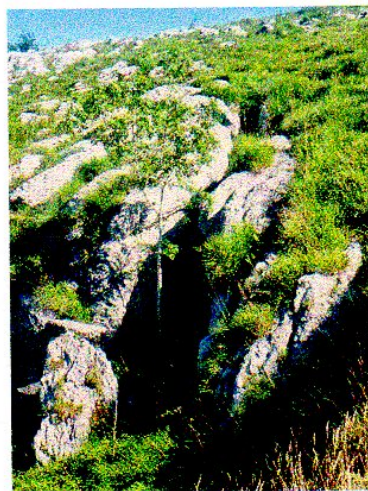
0588 Shaft

At gps there are two shakeholes to west and east.
The east one looks to be the correct hole but need
clearing gear and clothing to check.



0589 Shaft (really a rift)

Gps ok, tree has grown and now well above rift.



4200 Shaft

Two depressions at gps higher one looks to be correct hole and fits description.
Lower depression looks blind,



From: big_stevemartin@hotmail.com,
To: juancorrin@matienzo.org.uk,
Subject: log entry 3282
Date: Thu, Jul 22, 2021 5:07 pm

Cave 3282 22/7/2021.
Big Steve.

Quick trip (4hours) to dig entrance pool cobbles and to hopefully open up way on as seen at Christmas 2019.
Easy under water digging removing largish blocks and cobbles revealed way on, low but passable.
I entered feet first for a body length seemed to open up. Entrance squeeze snug on chest but now needs a diver
with bottles.
Good project, water cold but very clear, vis clears quickly if disturbed.
Big Steve.

(5)

27/7/21

See Lloyd Andyp

Capping in site 200. Good draft. This site will require a lot more work. Camera on a stick recommended to 200. Further into narrow section we were working into. Snappers or similar would make faster progress, interesting snails.

24/07/21-5045 Pete Smith, Steve M & Phil P.

More digging & capping. Three cap holes went off ok but only limited rock broke off. Next two had problems one did not fire, second did but did nothing. Very soft rock the problem. Tried hammer action & "plug & feather" but very slow progress. Needs a lot more hard work.

#2694, 25 Jul 2021, Louise K, Torben R, Peter S, Karen K R, Marie K R

Bjarne and Torben found the dig back in 2007. Peter Smith had a closer look at it this spring and dug out the entrance and the slope, excellent work.

A good draught out the entrance.

Entrance is now Ø 50 cm. A P4 drop on ladders leads to a slope. There is a sling belay at the bottom of P4 and another one on the left side 2 meters further down the slope down to P24. P24 is rigged with 1 bolt at the top, another 7 m down, a deviation 7m further down, and last drop 10m. About 5m above the bottom, it looks like there could be a horizontal continuation towards north. It may be reached by pendulum and drilling across.

From bottom of P24 a boulder slope leads to a C-2, where there is a little grotto with stalactites.

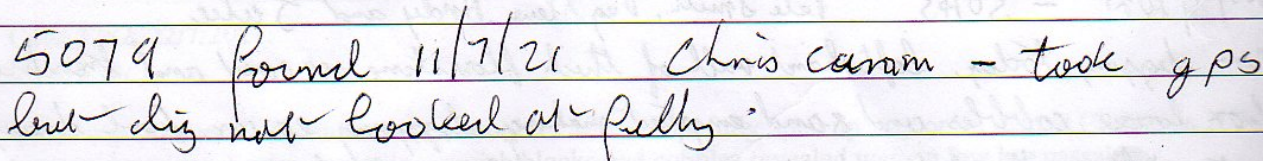
Tackle: Entrance with ladder. From the bottom of P4, a 40m rope is needed.

Torben

28/7/2021 - 5045 Pete Smith, Bug Steve, Andy and Julie

More digging today. Left hand wall of thick flowstone removed and trench in floor loose cobbles and sand emptied making digging easier. Good draught out still with lots of moozies at entrance. Next trip may need drag tray as well as a ~~large~~ Kibble. Good progress made today.

952



Matienzo Summer 2021

Thursday 22nd July 2021

Si & Di

0207: Fuente de la Cuvia

Such a delight to be in Espana even though the weather was better in England! A strong draught was blowing from the entrance of Cuvia even though the clag was down and a warm dampness filled the air. We slid down the muddy entrance slope and after a short distance discovered animal footprints in the sandy edge of the streamway (fox?).

We made our way to the end of the draughting hole passage in 30 minutes and set up the GoPro on and extending tube set up. Discovering that we couldn't view the footage live at the same time as recording we chose to record the video first then view it to check we were pointing the camera in the right location. The draught is strong and cold and a cold trickle of water flows over the calcite enough to soak though you oversuit, hopefully a rapidly constructed mud dam will divert the water. Further video showed a passage continuing on the left and a lower rift on the right.

We surveyed from the draughting tube dig all the way to the cairn at the entrance series junction.

Friday 23rd July 2021

Si & Di

1298

Phil had suggested we took a look at this draughting dig to see if we could locate a likely direction to progress, on an overcast afternoon the entrance was indeed draughting strongly. As it was late we didn't take any digging gear, having a rummage about the draught seemed to be emanating from the area where the last snapper had been set off. Moving a few large rock a glimpse of a possible way on could be seen.

Saturday 24th July 2021

Si & Di

2889

A trip in Torca la Vaca via Big Mat Calf Hole is always a pleasure. We headed down Scafell aven to the Penrith Historic Market Town duck and then upstream to survey the un-surveyed section between Satterthwaite Tarn Chamber and Cockup @ Cockermouth Chamber noted by Jim Lister in summer 2019. This turned out to be the preferred route for heading upstream, and should be a useful addition to the survey for anyone travelling through this area. We also surveyed along a side passage off this which headed north dropping back into the streamway just before the chamber with note 'E'. I climbed up the steep rift from the streamway way noted 'F' which emerged through the floor of the green level at the question mark, this also connected into the chamber noted 'E' at the question mark.

Surveyed 131m 'new'.

Sunday 25th July 2021

Si & Di

1298

the previous night saw a really good test run in the bar in preparation for Andy Pringle's arrival, so we had a rather late start! A couple of hours and we had enlarged a gap big enough to slip underneath a massive car sized boulder to glimpse down through a hole to what might be caveable space between the boulders.

During the digging trip both of our primary caving lights failed, the switch on Simon's lamp was stuck in and Di had a temperamental battery connection! Being a digging trip not far from the surface, we didn't have our usual Matienzo exploration clobber with us, fortunately as we were intending on doing a bit of video we did have a backup torch, otherwise both of us would have had to cave out of the boulder choke using the light on the front of the drill for illumination!

Monday 26th July 2021

Si & Di

1298

Si continued widening the gap to under the car sized boulder, whilst at the same time Di was excavating the hole down. Swapping places Si levered three massive boulders and dropped them down the 2m climb which allowed access. Tiptoeing over the suspended floor of precarious blocks trying to stabilise them, you could see down through the gaps a further 2m.

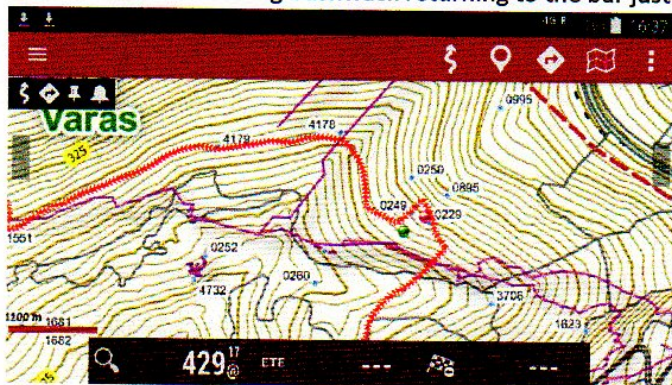
Note: both caving lights now being fully fettled performed flawlessly!

Tuesday 27th July 2021

Si & Di

Trying to find 0229 – again!

An evening walk from Casa German through the mushroom and bushwacking to where we had previously got to when descending from the Lluvia road. Searching lower down the hill from the 0229 coordinates around 30m away and 15m lower on a bearing 250deg 30T 453249 4798450, Di located a flat area and a shaft hidden by a heather bush at the bottom of a small limestone outcrop. Two thru-bolts were placed and the shaft descended to 5m depth where a 3" wide rift continued. No draught. So 0229 and the nearby caves are still to be re-found. As it had gone dark we made our way back via another exciting bushwack returning to the bar just before midnight!



5080

(9)

28/7/21 4853 Joe, Pringle & Phil
Lots of capping, with some done while upside down! Now
hole is big enough for a slim person to get out again, it
was big enough for us to get down just, but Chapuli
saying to Pringle we would bring him up food & beer
if he could not get out (if it was not raining!)
he declined. If down hole looks to go or need
digging the ent hole can easily be made bigger
from below. A Good day out! ✓

25/7/21 0040 Lloyd, Lizzie & Luna (dog)

Dog walk in a cave. A very skinny horse
was in the entrance on exit. ✓

30/7/21 Cosas (site 84)

Suan Penny See AndyP ✓

Photo trip enjoyed by all. - except Penny on the hill.

30/7/21 Cueva del Gusano 450796 4795185

Lloyd, Chris S., Pete S.

(5081)

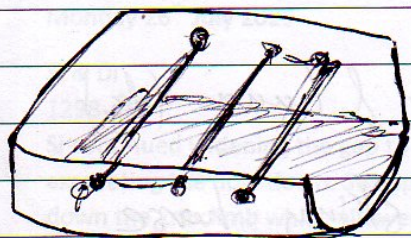
Dug through previous end (gravel, mud and rocks) to a larger
space and a constriction in bedrock with the draught. Ahead
it appears to turn right and increase in size.

- Previous days - Big Steve, Guy and David from Arredondo, Pete S.
draughting hole in shakehole dug to a hole into a small
chamber. A 4m drop was enlarged chemically, to a rift and
a passage which came to the end that has now been removed. ✓

Thurs. 29th July 2021 Si & Di

0207 :: Fuente de la Cueva

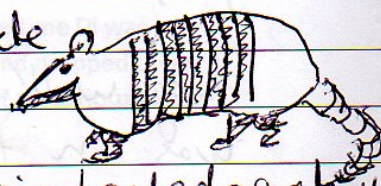
Si went up to the dig and got stuck into widening the draughting tube whilst Di added passage detail to the survey. Due to the nature of the passage, the tackle bags get trashed so Si made an armadillo casing using a cut down digging barrel and thick bungy cord. The bag slotted in snugly



three-banded
Armadillo

and could be easily dragged along.

No expedition tackle bags were harmed during this trip.



nine-banded armadillo

Friday 30th July. Si & Di

1949 :: Muela area

Located 1949 without too much difficulty although the clag was down and drizzly weather. The 4ft high X 2ft across passage was very short lived - in fact more like 2ft high X 4ft across!

Surveyed 21 m. Total. (new) Ended in a small chamber with no way on. No draught.

We then moved on to look at 3284 on the route back to the car but with it raining heavily, the clag thick and a looming dinner date we decided to leave it for another day.

Saturday 3/7/21

(11)

Mostajo 0071

Chris Scaife, Lloyd Cawthorne, James Carlisle

We went down Golden Void, across traverse with hemp rope, through the squeeze & down the sloping, muddy pitch. We pushed several passages, hoping to connect with the MUSC series. 105.56m* surveyed in total, no connection made.

In April 2019, I think I did find a way through the boulder choke at the bottom of the sloping, muddy pitch.

I was into big walking passage with footprints, but it was the end of a long day and everyone wanted to leave the cave. We were unable to relocate this connection today.

*(~~70m~~ 68m new passage) We rescued a frog.

Sunday 1/8/21 Agua

Chris Scaife, Carolina Smith de la Fuente, Oscar Scaife, Lloyd Cawthorne, Lizzie Wilkins, Luna ~~de la~~ Cawthorne

We walked to Agua, underground as far as the first wet bit. On the way out, we saw a guide taking two clients into the cave.

1st August 2021

Phil, Hilary, Juan, Penny, James, Jen, Eleanora, Juan to Cierrolinos aiming to drop a number of fenced shafts first seen Easter 2019.

5013 Phil cleared a route to the pitch head. After putting one then two ladders on the fine looking drop, Juan could still see the ladders swinging freely above the floor. Drop was disto'd to 15.7m in a 2 x 5m shaft, free-hanging for most of the way. Photos. Needs more ladder.

5016 Phil cleared the route in again and Juan climbed down a roomy p9.5 past decaying stal to a muddy floor with small bones. Photos.

5015 Phil cleared the vegetation away and dropped this hole 6m to a 3m rift choked with stal.

5014 Phil and James had cleared this when the farmer turned up, muttering about the fences being needed to stop the cows falling down. So we packed up and were escorted back to the wood.

Next trip in needs Pete or Lloyd and perhaps a less intensive clearance of the vegetation blocking access. Site 5013 certainly needs a revisit.

3157 JULY 2021 D&S SE 0200 SUBFOS FOTO

WE WENT TO INSERT A CAMERA ON A STICK TO CHECK OUT THE PROSPECTS FOR PRINGLE. AFTER LOT OF COUNSELLING - STRAIGHTENED CHAIRS

CLOSES UP, THE LN WALL MAY KLT UNDER? NO DRINKS

31st July

Si & Di

2414

Went to find 2414 but as it was getting late we didn't fancy the deep jungle bash through the woods and bramble.

1st August

4853

Pringle, Si & Di

Andy Pringle marched us up to 4853, which he'd been digging earlier in the week.

Si stithered down the open hole, dug the floor which dropped down and filled the hole beneath. To progress it will all have to be pulled up to the surface (adjoining)

Surveyed this and the nearby hole, ^{containing some bones.}
Total length 11m new.
we then moved onto...

1186

GPS location 30T 451 008 4794 190

On a previous visit this cave couldn't be located according to the log book (2011)

Dug open the muddy entrance which chokes after 2m.

Continued up to Sima Altitude 661

2 adjoining shallow depressions -
Excavated the entrances.

(5094)

(5082)

1. 30T 451032 4794103

2m depth sloping at 45°. closes down.

2. 30T

Surveyed new 3.5m.

Di acted as a ladder belay for the descent.
narrow. choked rift.

15th August Pringle, Si, Di

(13)

25912. Had a look at the brambles but didn't clear them enough to see if there was a cave or not.

25913 Bottom of a shake hole with trees + cliff face. Draughting - a cobweb was moving. Si applied 3 rounds of caps to gain access through the sandstone boulders.

It didn't take long before he was squeezing his way through the small gap and found himself at the top of a 28m pitch.

As we only had a ladder and lifeline we placed some bolts ready for the descent mañana. Lowered the camera and torch on a rope but not clear footage!
Survey commented.

To be continued...

2ND AUGUST 2021 Di & SE

25913

FINE

DUE TO POOR ROCK THE 28m PITCH WAS DESCENDED USING A NOVEL 'TRI HANG' INTO A LARGE NADIR RIFT / CHAMBER.

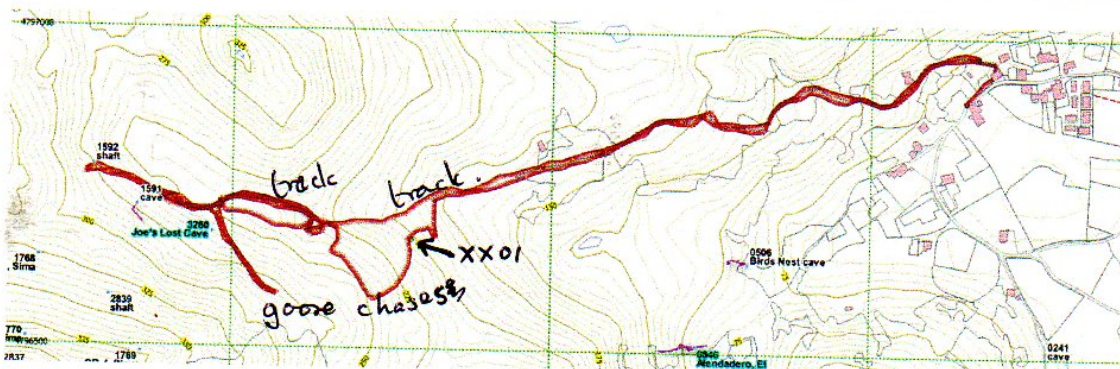
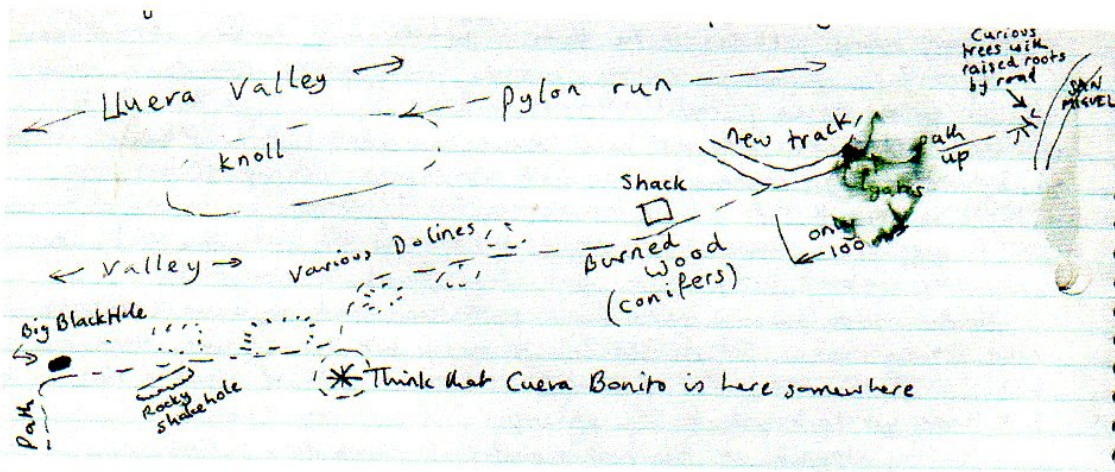
A 15m PITCH TAKING OFF FROM A FALSE FLOOR WITH A REBLAY PART WAY DOWN LIES IN AN AREA UNDERNEATH THE FALSE FLOOR. NO COVERABLE WAY ON WAS FOUND, HOWEVER IT LOOKS LIKE WATER FLOWS INTO A CHOKED BODY SIZED TUBE AT THE FOOT OF THE 2ND PITCH, WHICH ALSO DRAUGHTS IN. DIGGING COMMENCED BUT NEEDS COPPING GEAR.
SO FAR: 45m DEPTH AND 60m SURVEYED LENGTH.

2/8/2021

Juan & Joe went in search of Joes Lost Cave (3280). Took with us OruxMaps and Joe's sketch map from 1992 plus jungle bashing gear. Followed the white and yellow marked track up from San Miguel reaching the "black hole" (1592) marked on the sketch map. Also found site 1591 and went in for a look and a couple of photos.

Then thrashed about in the jungle with nothing fitting Joe's memory of 3280 – a small depression in a flattish area. It seems to Joe that the cave is well and truly lost.

Found site XX01 a possibly 6m shaft at 30T 456781, 4796672, just off a faint track. (Should be sent to the Colindres cavers).



2/8/21 Pedro AndzP
0726 Cueva la charcas
Photo trip. A wonderful spot for photos.

3280

3/8/21 Joe's lost cave episode 2. Walked over to the ruined farms above where we were yesterday, from the col on the San Miguel road. Dropped down on the waymarked footpath, right down to where we got to yesterday - the bend with 1592, then reascended, checking possible sites. Higher up the 'jungle' is less dense, generally, and could be negotiated in an over-suit. There are also a lot of mature deciduous trees, unlike lower down. I recollect that the lost cave was in a shallow rocky shakehole on a sort of bench which sloped down to the path, with a large beech tree on a bank above the path. There are two or three places that look promising, having the beech trees. Wearing only a t-shirt and thin trousers, I could only get a short distance from the path to check on possible sites. I took a GPS reading at the lowest possible site, which unfortunately is in degrees: ✓

02/08/21

Si & Di

2593- We returned to the body sized tube at the base of the second pitch - armed with capping gear.

Si set off capping and boulder removing while I completed the survey and pushed myself into the sandy slot leading off from the final chamber. 4 metres dug into the downward sloping drippy tube and we could see a further 5 metres to the right down a too tight rift. Slightly wider space in the ceiling. No easy way on. ✓
All kit removed.

Aug
3rd July '21 2353

Following the removal of all the gear from our capping trip down 2593 we decided to investigate a few holes close by.

2353 Undescended shakehole with a short rift at the eastern end. A hole at the bottom of the shakehole closes off. A slot halfway down the shakehole - northern end opened up to a horizontal ~~2~~ m passage with a 2m x 2m chamber at the end which closes up - a small hole in the base is too tight.

Then wandered over to 3542 - descended the rift - 5m which choked at the bottom - as described.

3/8/21 Andy P + Juan to check out 1289 - the cave with the talus cone and "mushrooms". Found entrance in minimal jungle. Juan went underground beyond the first squeeze down a calcite slope to a passage with 1 1/2 mushroom formations that Andy has a desire to photograph for Pete's Formation database online. The second squeeze appears very tight and I won't be attempting that. Took 3 attempts to get back up through squeeze no. 1.

Pete Smith Big Steve. 3/8/21. 5045

Quick but sweaty digger trip with few mosquitos. Good progress made along body length passage to flowstone blockage with a good draught cut. Blockage partially removed to reveal possible way

on ore with floor falling away and down.
 looks good, now needs a second person removing spurs.
~~Wet weather~~

4th August 2021, DIX JE

0200 SUPERFOSFATO

WE WENT TO DIG OUT THE FLOOR FOR A COUPLE OF HOURS.
 TODAY THE DIG WAS DRAINING OUT FROM A
 SMALL HOLE IN THE ROOF JUST BEFORE THE DIG AND
 ALSO FROM THE DIG ITSELF - NOW ALL OF THE
 SOIL AND MUD FROM THE FLOOR HAS BEEN
 REMOVED CAPPING CAN COMMENCE AGAIN.

1/8 2021 #2694, Torben R, Louise U, Peter S.
 Two possible leads pushed:

- 1) Towards South, a climb up (c+2) above the grotto
 leads to a small passage that ends in a blind pitch (P7).
 On the way to P7, 5 m before P7, another blind pitch (P5)
 was dropped.
- 2) Towards North, a passage 4 m. above the bottom of
 P24 was entered by pendulum from the P24 rope.
 It ended after 3 m.

Total survey length (25th July + 1st August) - 89 m.
 Updated files put in folder

Louise & Torben

3/8/21 4732 (252) Phil P, Chris, Lloyd & James. - Turn up to pitch
 Rugged big pitch found in 2020 - looked good all way down 27m to boulders &
 re-belay to bottom. Climb down to area of caves where in wet weather a lot of water
 will come in. Passage got bigger (1.5 m across) at T-junction, to then go into light
 wet crawl that looks like base of collapsed up rift. James ~~pushed~~ pushed
 as far as wet head and dog gear allowed. Good draught. Inlet pushed for 20m to
 chamber with wall of fill! Surveyed, just; despite problems with PDA. Traverse over Reel of
 Big Pitch to possible passage still to do.

5/8/21 1017 - SOCKS

Lloyd C, Carol S, Chris S, Oscar S, Lana (dog)

Juan C, Andy P, Pedro S, Joe T.

NOT ANON. - LLOYD CAWTHORNE

A return to the dig from Easter 2019.

The walk was spiky, but not impossible.

We dug what we needed to dig & it was
successful. Through the new crawl, it opens into
an alcove where you can see a constriction
which cannot quite be passed.

Loose rocks above means it requires snappers.

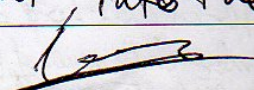
Various small holes dissipate the draught,
explaining the absence in Easter 2019

Magic smoke, a shaking spider's web & the

increase in draught as ~~another~~ another hole was

filled, ~~we~~ enhanced our ~~understanding~~ understanding of

where to go. (No amphibians) PHOTOS
VIDEO

It appears the cave continues to the right, into the
hill-side in a rift. To be continued. 

(19)

From: r.skorupka@btinternet.com,
To: uzueka@aol.com,
Subject: Re: Vallina
Date: Mon, Aug 2, 2021 2:16 pm
Attachments: VALLINA DOWNSTREAM SUMP 6 DIVING PROJECT.docx (19K)

Hi Juan

heres a report of what we got up to. Lots of lessons learned, may be in vain. Not sure what to do now. If the covid stress is anything like this again next year I wouldnt come anyway. We passed the antigen tests today, but what a pisser if one of us had failed.... It would have literally cost us several thousand in lost boat costs, accomodation and lost earnings. Its just been a big stress from start to finish this year. Even the dog needed 10 pages of forms costing 200 quid to get him out here.

I will try to send this tonight, but we rely on the bar at Busta for internet, so it may have to wait til we get home on thursday. Enjoy the rest of your summer

Rupe

From: [Juan Corrin](#)
Sent: Thursday, July 29, 2021 8:18 AM
To: r.skorupka@btinternet.com
Subject: Vallina

Hi Rupert,
Di said that you'd been in and found the rest of your gear OK. Are you reporting this to the Guardia? I can report the issue to the Federation if you want.

Cheers

Juan

✓

VALLINA DOWNSTREAM SUMP 6 DIVING PROJECT

CONCLUSIONS AFTER SUMMER 2021

Having spent several years and tried different strategies for extending the existing limit of exploration at this site, I have drawn the following conclusions, which I hope will help with future attempts by both myself and others in continuing exploration here and at other similarly remote dive sites.

There are basically two approaches now feasible to continue from the last push at the site, which was made in 'alpine style' ie. carrying more or less everything needed for the dive on the day. This approach is no longer physically possible due to the amount of gas required and the terrain it has to be carried over. A limit has been reached, beyond which more complex siege style tactics are now necessary.

1. Open circuit with a large carrying team. This would require at least 4 x 7 litre cylinders and drysuit for just one further push, and would still present difficulties for the pushing diver unless he had a further diver to assist with transport between sumps (mainly sumps 5 and 6, but there is also above water travel between sumps 1 and 2, and 2 and 3), requiring yet more gas for the support diver.
Carrying larger capacity cylinders is simply not an option. Transport to and from the dive base would only be possible by a very fit and competent team, and would not be sustainable on a long term basis. Attempting to transport such a load in the passage between sumps 5 and 6 would result in damage to the drysuit or serious injury through a fall in the razor sharp potholed streamway.
Any further push would entail organising a team of around 10 sherpas, to carry both in and out of the cave. Having achieved such a task, the whole enterprise may have to be cancelled at short notice due to the unpredictability of the weather. Such a high volume of traffic through the cave would also severely reduce the visibility in all the downstream sumps. This would be detrimental in sump 6, where the large and complex tunnel will require good conditions for a useful push. The often superb vis is one of the reasons why diving here is worth such a lot of effort in the first place.
- ✓ →

2. Closed circuit with staged cylinders and rebreather. This approach makes feasible a considerable extension to the sump without any requirements for Sherpa support. Bailout cylinders and rebreather must be pre-staged at Sump 6, as it is not possible to carry the entire equipment package in one go. The cylinders are normally unused, and can be permanently left at the sump. The rebreather can be brought in at the start of an expedition and left in situ for a couple of months. This approach was used to reach the existing end of the line in 2019, in a half hour dive which used virtually nothing in terms of gas or absorbent time. The only flaw in the approach is the unreliability of the electronic components after being left in the cave environment for some time. It is therefore essential to have spares, both of the oxygen sensors and the dive computer that monitors their output. (both of these elements failed in 2021).

Initially, the dive base was from an advanced camp on a ledge above the streamway after Sump 5, where much kit was left throughout the year. This strategy has now been abandoned in favour of starting from the Sump Chamber at the old end of Vallina, and removing all gear at the end of the expedition. It was found that most gear suffers for being left in the cave atmosphere ; neoprene absorbs water and loses its stretch, drysuit seals become flabby and leak ; dry underclothes become mouldy ; all electronics just don't work after exposure to damp, especially sensors and batteries. There was also the added complication of an 11 metre SRT pitch before and after every dive, to access the ledge.

The trade off is having to traverse a lot more cave in the delicate drysuit. I had some especially made boots fitted by O Three to my suits this year, to withstand the sharp and irregular cave floor. The usual catheter system for allowing a pee tends to come adrift during a lot of movement, resulting in very wet underwear, so this was supplemented by " teenagers overnight bedwetting pants " (yes, they do exist, and absorb a lot of fluid).

A normal days dive outing therefore consists of several stages ;

1. To the base of the Double Dutch pitches in dry gear, change into wetsuit.
2. Down to Sump Chamber, change into drysuit. Kit up on far side of the boulder chaos.
3. Through sumps 1 to 5 on open circuit gas. Just after sump 5, dump cylinders and lead. Carry valves, fins, mask, harness, etc, very carefully down to Sump 6.
4. Kit up at sump 6 with rebreather and two side mount 7 litre bailout cylinders, all pre-staged. No lead is needed here as the rebreather package (Classic KISS with 2 x 3 litre on board cylinders) is very negative.

This system was found to work very well in 2021, sump 6 being reached in just 3 hours 30 mins. However, no progress was made in the sump due to several factors, lessons learnt being :

1. Don't fall over the dog in Ramales (luckily no-one was watching). The resulting injury can cause a lot of pain whilst caving.
2. Electronics don't like damp – always carry redundant parts. The main problem was oxygen sensors. These were almost impossible to buy in 2020 due to covid, the ones I had imported spent a lot of time in customs, in transit, etc, and I think this had an adverse effect on them. They were new out of the sealed packs this year, but still were inconsistent and all 3 failed at some point during diving, having passed the initial calibration.
3. Also, my main dive computer, a Shearwater Petrel with external ppO2 monitoring, let me down – it wouldn't switch on after 2 weeks underground. I think this is an inherent problem with damp but I should have had it serviced before coming this year. This is the one and only indispensable item as it monitors every aspect of the rebreather and dive profile. I intend to bring a spare for next year.

After finishing this report, a further complication arose in the form of the theft of my SRT kit from the head of the pitch area by persons unknown. I am sure they were able to easily get to this area because of the large number of route markers installed by the Catalans, meaning no prior knowledge of the route would be needed. The worrying implication is that on future trips into the system, I cant be sure that my gear or the ropes may be removed when I am down the pitch, resulting in a lengthy wait and rescue callout. Some thought will be required as to whether it is worth continuing with this uncertainty hanging over the safety of my return, and the security of my equipment.

5/8/21 Juan + Andy P into 12³⁹~~28~~. Juan layed square to photograph mushroom stal. Andy photo'd Juan coming back through squeeze. ✓

5/8/21 Corada (0780) material on computer from Patrick Degouve. 90m new

Pete Smith photos on computer 2021 summer folder

0287-PS-2020au-1.JPG
0287-PS-2020au-2.JPG
0328-PS-2020au-1.JPG
0328-PS-2020au-2.JPG
0328-PS-2020au-3.JPG
0328-PS-2020au-4.JPG
0354-PS-2021sp-01 (1).JPG
0354-PS-2021sp-01 (2).JPG
0354-PS-2021sp-01 (3).JPG
0354-PS-2021sp-01 (4).JPG
0354-PS-2021sp-01 (5).JPG
0771-PS-2020au-1.JPG
0771-PS-2020au-2.JPG
0878-PS-2020au-1.JPG
1265-PS-2020au-01.JPG
1265-PS-2020au-02.JPG
1265-PS-2020au-03.JPG
1265.jpg
1265.pdf
1265.svx
1310-PS-2020au.JPG

Survey

1336-PS-2021w-1.JPG
1336-PS-2021w-2.JPG
1455-PS-2020au-1.JPG
1455-PS-2020au-2.JPG
1455-PS-2020au-3.JPG
1505-PS-2021sp-01.JPG
1505-PS-2021sp-02.JPG
1505-PS-2021sp-03.JPG
1530-PS-2021w-1.JPG
1530-PS-2021w-2.JPG
1760-PS-2021su-01.JPG
1910-PS-2020au-1.JPG
1910-PS-2020au-2.JPG
1911-PS-2020au.JPG
3310-PS-2020au.JPG
4165-PS-2021sp-01.JPG
4520-PS-2020au-2.JPG
4520-PS-2020au-1.JPG
Grid refs etc.docx
shaft near 4165-PS-2021sp.jpg

→ new?

0388: 450275 4795163 351m
0391: 450457 4795215 351
0392: 450611 4795204 beech tree on aerial photo ↑ 349
0329: probably repeat of 1911, which is the better grid ref.
0327: possibly repeat of 1910?

0287 Campuvijo: 456564 4793078 123m

5084

Shaft near 4165: 449775 4795948 284m: Depth 5m. 4m pitch to a slope into a small space. ✓

1760 Torca de Blas: 452800 4793307 404m

6/8/21 - Big Steve, Phil P., Andy A, Pete S. to the dig 5045. Further progress made along the crawl despite the issue with the soft rock. Smallish pieces broken off most effectively with plug and feathers. We can see down/ahead about 2m. Another 1 or 2 days' work should see a lot more progress made. ✓

5 Agosto Si, James, Di

24/14 We bashed our way through the brambles on what seemed like the hottest day of our 3 week expedition! Using Orax to locate the ~~the~~ cave entrance we were 2m away and the final clip of the brambles revealed a logging track leading directly to the entrance Sink hole! At least the route back to the car wasn't as arduous.

Si crawled to the top of the pitch to check out how tight it was - not too bad but to make the day more pleasant he capped out sections. James timed the enlargement process - the first 5 minutes spent in getting the gear assembled 28 minutes to cap in total.

We dropped into an extremely drippy chamber with an obvious hole in the floor where the dust from Si's drilling at the top of the pitch was dropping down and being sucked into the hole 'like a banana'!

Si did 2 more rounds of caps whilst hanging on the rope to help our exit. The spits from the previous trip were rusted and only half in but managed to take Si's swinging around on the rope. The 14 year old maillans were rusted. We used the old rope as a knotted foot loops hand line and rigged over the top. Si capped the ongoing tube whilst James and I diverted the water flow.

from the dig. After boulders removed James inserted himself into the puddle of water to create the bow wave the previous 2008 explorers had experienced. ~ Unfortunately we didn't hear the same gush and drop of water - An aeroplane flew overhead which could be heard rumbling down the cave!
 nb. Some unexploded caps in the right hand wall
 Pitch needs rebolting. ✓

6 Agosto

Si & Di and The Armadillo

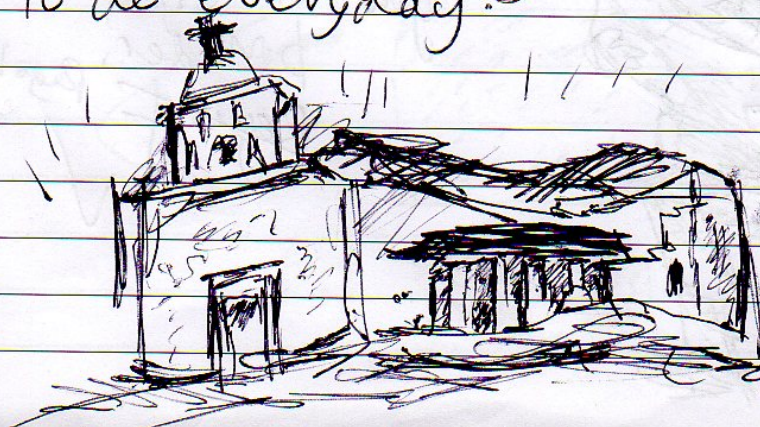
Cuvia

0207 - Following a 6pm appointment in Cinca Colindres for our return home COVID flow test we had an evening trip into Cuvia 8pm - 11pm.

Felt much easier getting to the dig face - crawling muscles building up!

10 rounds of caps and chiseling. The drill chisel bit proving effective 'cos

the rock is fractured - like sandstone through the tube edges, limestone underneath that responds to capping better. More video footage taken - still unclear if it widens, still a long term project. 2+ m of capping and not a trip you want to do everyday!



Riaño church at midnight glowing purple, pink, yellow blue and green! Very atmospheric. ✓

Saturday 7th August

Si & Di

0200 :: Superfosfato

A quick trip to collect the dig bucket we left behind. 1 round of caps and chiseling of the loose rock. Boulders cleared. The boulder dry stone wall is developing nicely.

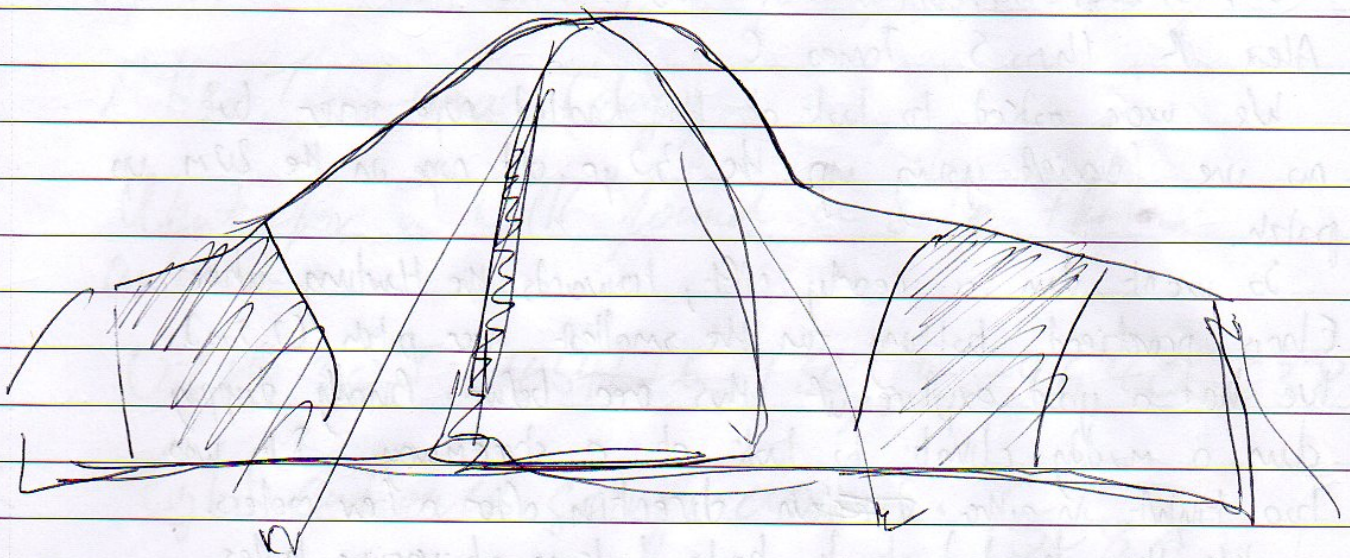
2414 :: Si capped the squeeze at the top of the pitch to make access easier.

You probably don't need to wriggle feet first along the crawl to get to the pitch! Videos of the entertaining mid-air capping taken. Draught down the dig looking good.

A couple of caps down the dig opened it up and more video taken. The passage bends to the right and the video with the camera positioned to the right as the selfie stick showed ongoing passage that needs widening to gain access. Si capped a guitar sized slab off with the caps so hopefully it won't take too long to make progress.



Si with a
guitar sized
boulder.
Reggie
Pegoff

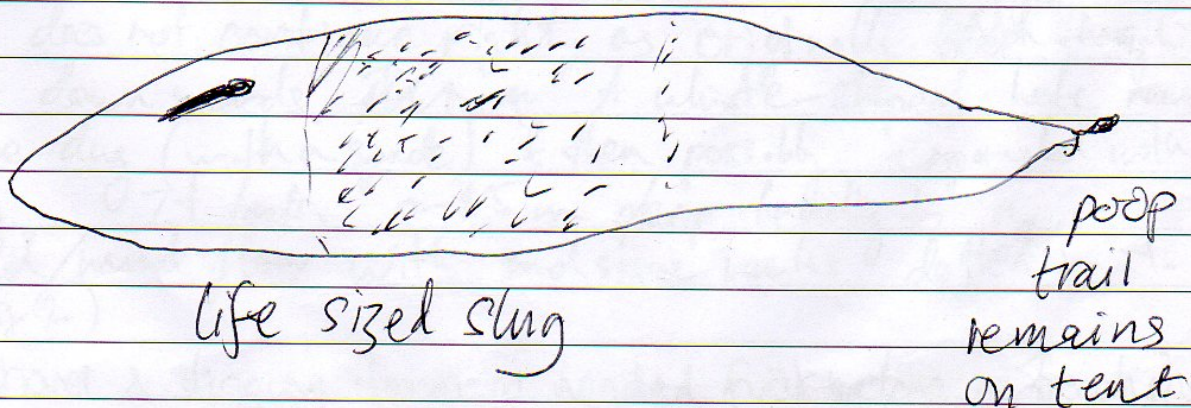


Corid and the uncertainty of getting to Matienzo resulted in camping on Pablo's back garden!

We managed to acquire a 3 chambered tent with sufficient space to cope with the changing weather — thunderstorms and intense heat.

The mouse in the backstore kept us entertained.

The giant slugs continued to repulse — sliming into our shoes overnight.



07/08/2021 Fresno 2 0841

Alex R, Chris S, Jones C

We were asked to look at the knotted rope series but no one wanted going up the 30 yr old rope on the 20m up pitch.

So went down a nearby rift, towards the Hauling where Chris practiced belting on the smallest ever pitch (2.5m). We had a good explore of this area before finally dropping down a muddy climb to look at a streamway. It was too tight in either ~~direction~~ direction after a few meters.

We then headed slowly back looking at various holes in the floor, entering a lower, parallel passage. Part way along was a muddy duck in cold water to eventually come out under the roped traverse.

The final hole we looked at was to the left (heading out) just the 'big rift'. We decided we would come back to this with a rope when Chris's light was not failing. Survey shows this passage open. ✓

Trip time 5 hrs.

6/8/21 Muelka, Lloyd C, Fran McD,
Mike & Luna (dog)

Went for a walk found a site that is
unlisted.

UTM 30T: 454776.936, 4796406.638

tight entrance going down. (5083)

Photo:

Lloyd C

7/8/8/21 1017 Sacks

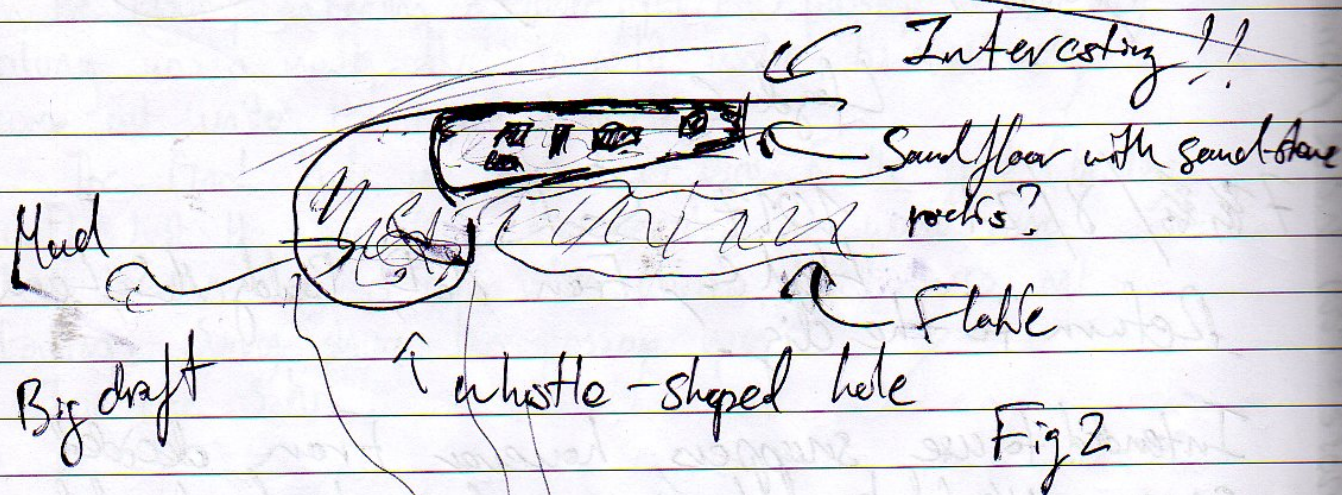
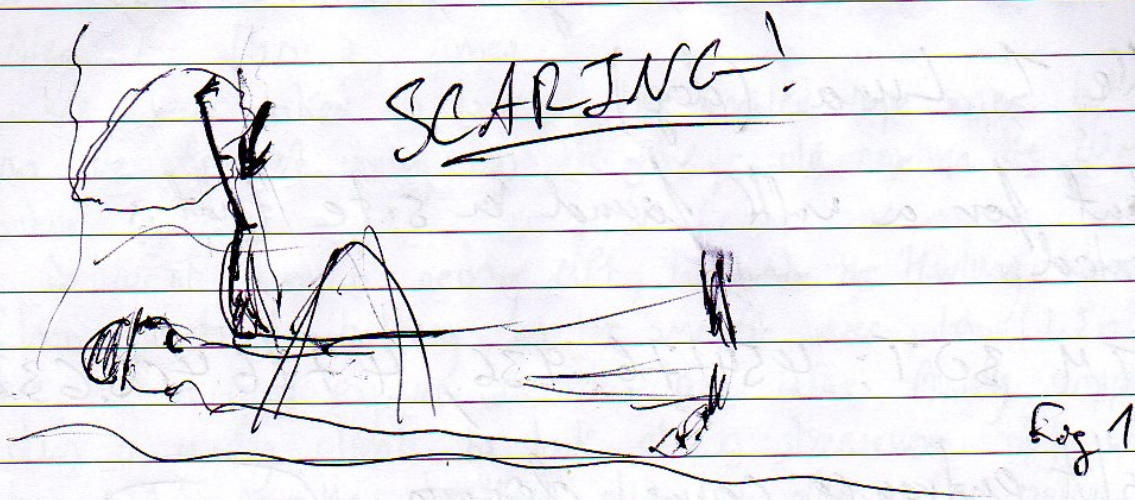
Lloyd C, Fran McD, Biddy McS, Luna
Return to the dig.

Intended to use snappers however Fran decided
snappers would be luxurious & instead chiseled
loose rocks above her head. This was quite
fruitful. The scary part was poking a boulder
area with a crowbar in a constriction then ~~digging~~
trying to crawl back wards as quickly as possible. (Fig 1)

It does not continue right, as originally ~~thought~~ thought,
but down wards. ~~The dig~~ A whistle-shaped hole needs
to be dug (with a spade) & then possibly expanded with
bang. It looks ~1.5m deep leading to a
sand/mud floor with sandstone rocks dotted in it.
(Fig 2)

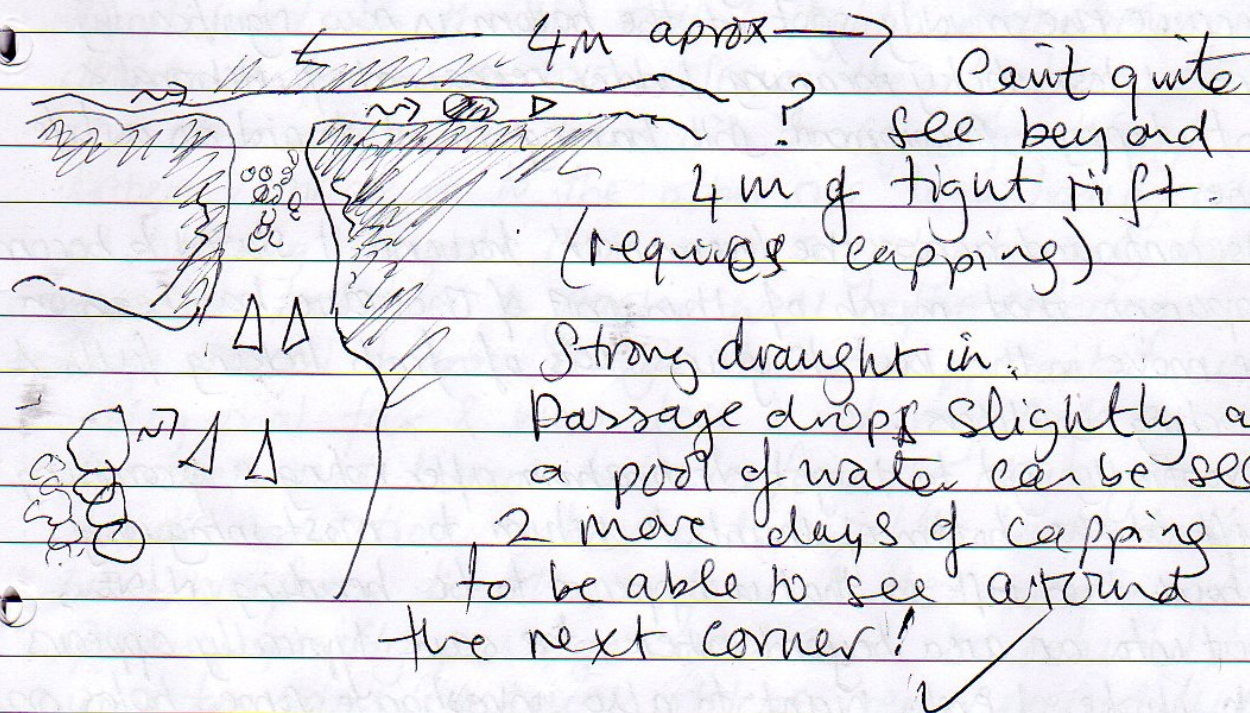
A shovel & digging down is needed, first ~~before~~ trenching
tool definitely advised, then bang! (KILLER TROWEL) ✓

knife - dog nose - can walk from valley.
machete saw army



Sunday 8th August Si & Di

2414. Another late afternoon trip
5.30 till 8pm. Not as much
water dripping into the main chamber.
Si capped more guitar sized boulders
and enlarged the passage ~~up~~ 2 metres
up to the 90° right hand bend.
Wide enough to crawl into and look into
the way on ahead.



8/8/21 - 5081 - P.S.

17m surveyed, with a depth of 8m. The hollows where sediment was dug out on 30/7/21 had been filled with water, increasing the 'squalid rating' of the dig. Draughting well, as usual.

MONDAY 9 AUGUST 2021

MOSTAJO 71

CHRIS de la SCAIFE, LLOYD CAWTHORNE, ALEX RITCHIE, JAMES CARLISE,
MICHAEL TOPSON, FRAN MCDONALD
(time travelling donkey) (croc fornicator)

NOT ANON. FRAN MCDONALD

Returned to the musc series to explore potential leads identified ~10 years ago working from A. Sharples written description (2012). Laddering shunt is a very good idea and also worked well because the muddy spot at the bottom is now significantly drier & less sticky meaning ladder remained functional & not slippery. Recommend still having shunt to aid as a life line.

As continued across the 'womaniser' traverse it started to become apparent that much of this part of the cave has been on the move in the last 10 years. Lots of fresh looking falls & rocking boulders.

Eventually got to target destination after noting a promising rift at the bottom of shunt to return to. Most intriguing about this rift is that it appears to be heading NINE, out into an area beyond where the cave typically appears to choke & end. Want to also investigate some holes on the surface in this area too to see if there may be any evidence of cave extension in this region & if there may be other geology hints at what might be happening.

After food, James & Mike explored large promising rift on northern wall to 15m crawl which closed down & stopped. Then, joined by Alex (who had disappeared for a while but then re-materialised) they explored the other tempting leads that Sharples had indicated but they all closed quickly. Lloyd, Chris & Fran went over bridge & poked around lead by the drippy chamber. A few hanging rifts & bedding

planes looked good initially but soon choked down & did not look safe to push.

A rogue boulder also maliciously targeted Chris's leg. Chris managed to survive channeling the potty mouth monster & bravely pushed on.

Chris, Lloyd & I continued toward Hoodoo Haven but never quite made it deterred slightly from poking anything too dangerous looking in the boulder department given that they were out for blood!

Lloyd went into the bit called 'light' on the survey by Station D from 1-8-2012. Seeing the winky black on the other side Chris went into to squeeze through further & made it to the other side to a fading rift at 'stopping' height. There was a gully heading down which we took time to garden well before entering. As Lloyd started to enter though it was apparent it wasn't going that far & was loose & not very safe so we surveyed out & went back to find the others given that it was now time to head out. We call this Voodoo Lady.

When we found the others James & Alex were in a promising rift passage which is to be returned to in a few days. A couple of legs were surveyed but still to be explored properly.

We then all headed out to ensure to meet call out. Ladders have been left on shunt pitch for now & entrance is still rigged.

(Couldn't find a survey station to tie into)

At bottom of scary boulder climb just before big stuff, a hole to the East led over a flat boulder to where a 1m climb down into a sand pyramid with 15m drops on 3 sides. A rope was rigged, but it turned out to be easy. This reached

CONTINUES ON NEXT PAGE.

Trip to complete survey from old end to top of pitch.
also surveyed passages above pitch found at Feb 2020

✓ gsc

Juan drove up the eastern track from Cruz Usaño, parking just before the track becomes steep below the field at Cotorro. Aim was to walk up and out into the very far east of the permit area to fly the drone on 5 pre-planned flights and panoramas, using the track through the wood past site 1967. The day started with fine weather but it soon became clear that low cloud was forming over Mullir. The track starts with red paint markers but Juan soon lost these and wandered down to the north into rough terrain eventually regaining the track with red markers. Near the end, the marked route seems different to the previous route (from years ago) as it crosses 3 scree slopes and has a near-vertical short climb before emerging onto the open hillside at about 575m altitude.



The drone movie show a distinct black hole in a depression close to drone home which was only noticed as the drone went up. This is worth a number now - @ 30T 456452,4795094 520m - no idea of depth. Other black holes are noticeable on the videos but will need work on the ground.

One new "cave" was noted on the walk in - a 2m long, low shelter under a collapsed block. Noted so nobody else bothers with it. 0455888 4795104 ↑ 5087

(It is possible to drive a "hire car" up into the field at the end of the track from Cruz Usaño as the middle section has been concreted.) (Photos on computer in the Drone folder)

A large number of bats were seen flying over El Noso on exit.

The higher altitude flights were abandoned as the mist was covering the area, so a route down to the east, being about 50m, was taken to reach a point just east of the start points for flights 2, 4 and 5. The eastern flight 2 and a 360° panorama were carried out and then the more northerly flight 4 with a panorama, but the mist was descending so flight 5 was abandoned. This, with the 2 higher flights, still need to be done next time.

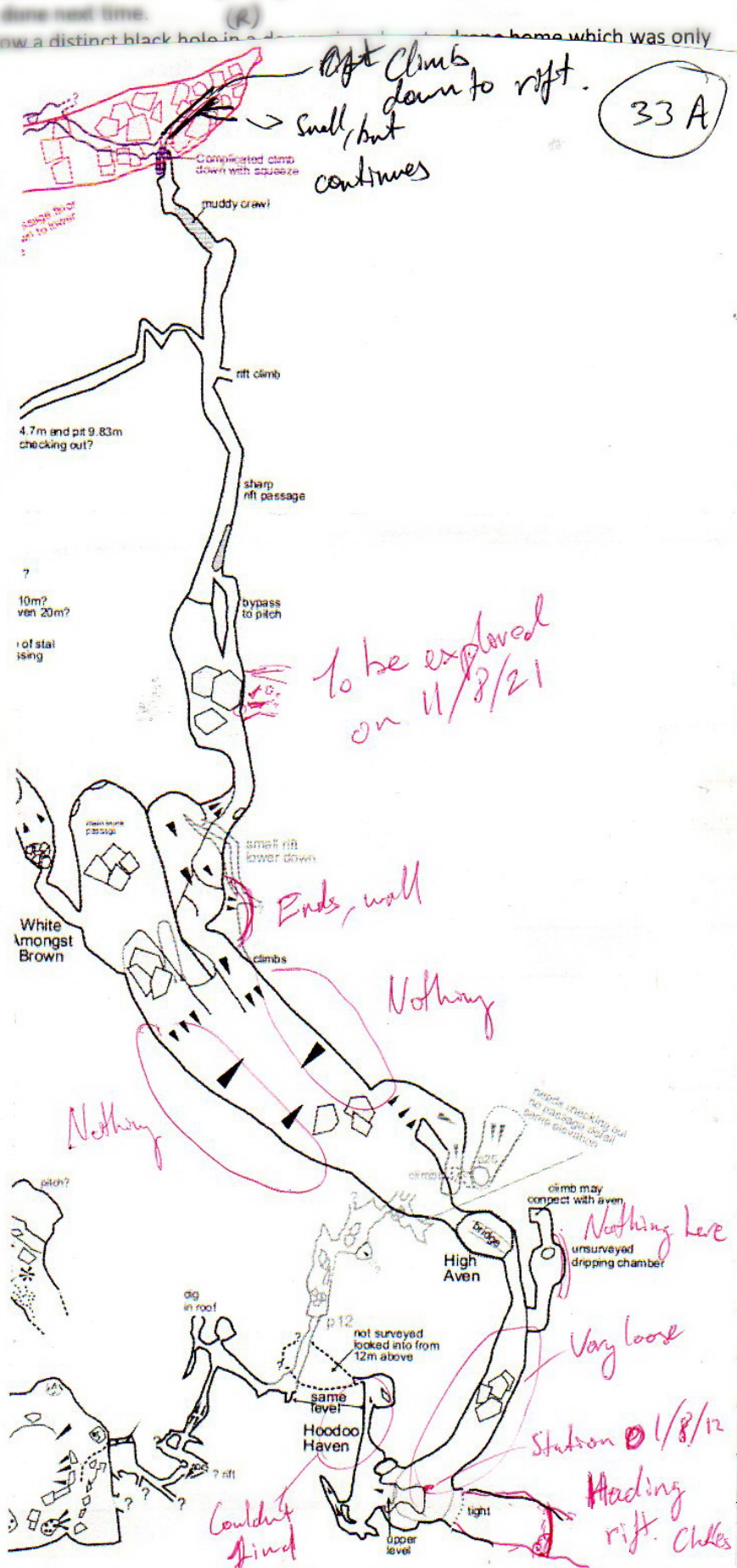
The drone moving show a distinct black hole in a dense forest which was only noticed as the drone of depth. Other black One new "case" was: no nobody else to the (it is possible to drive middle section has be

sets

9/8/21

OO

A large number of bats were seen flying over the on east. (to explorations)



blank

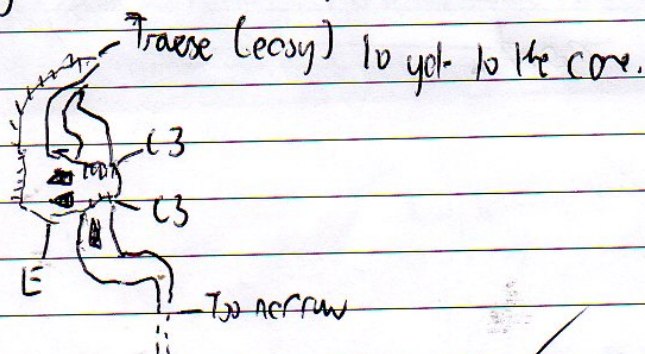
10/08/2021 2575 Alex R, John P

Went up to 2575 after reading it was unexplored.

A 3m back and foot climb leads into the ^{left} core, which is actually two cores.

This core is about 5m long, across the climb up is the right-hand core this is about 10m long before it gets too narrow, but it be copped but appears to continue very small.

We noted the core Dingle view core as its closest directly above the "Dingles" house.



Juan got stuff & Pong asked if he needed rubbing!

From: simoncornhill@dsl.pipex.com,

To: papard@easynet.co.uk, uzueka@aol.com,

Cc: diane.arthurs@icloud.com,

Subject: 0100: Riaño rubbish dump

Date: Wed, Aug 11, 2021 8:20 am

Attachments: 0100-centrelines overlay.pdf (326K), notes on the survey.jpg (2506K), 0100.svx (6K)

Hi Phil/Juan

Below is our final trip report and attached is the survey file for 0100, it matches the existing survey rather well!

I currently have an issue with my dropbox account so I'll send you the photos later.

Thanks again for a brilliant expedition.

Cheers

Si & Di

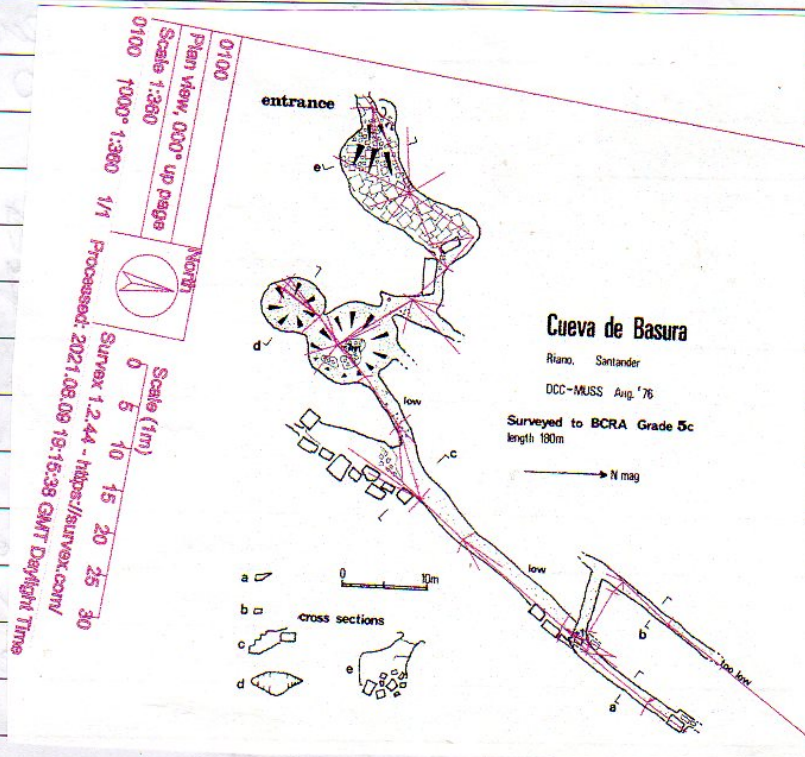
09/08/2021 Si & Di - 0100: Canes, Torca de los (Basura, Cueva de)

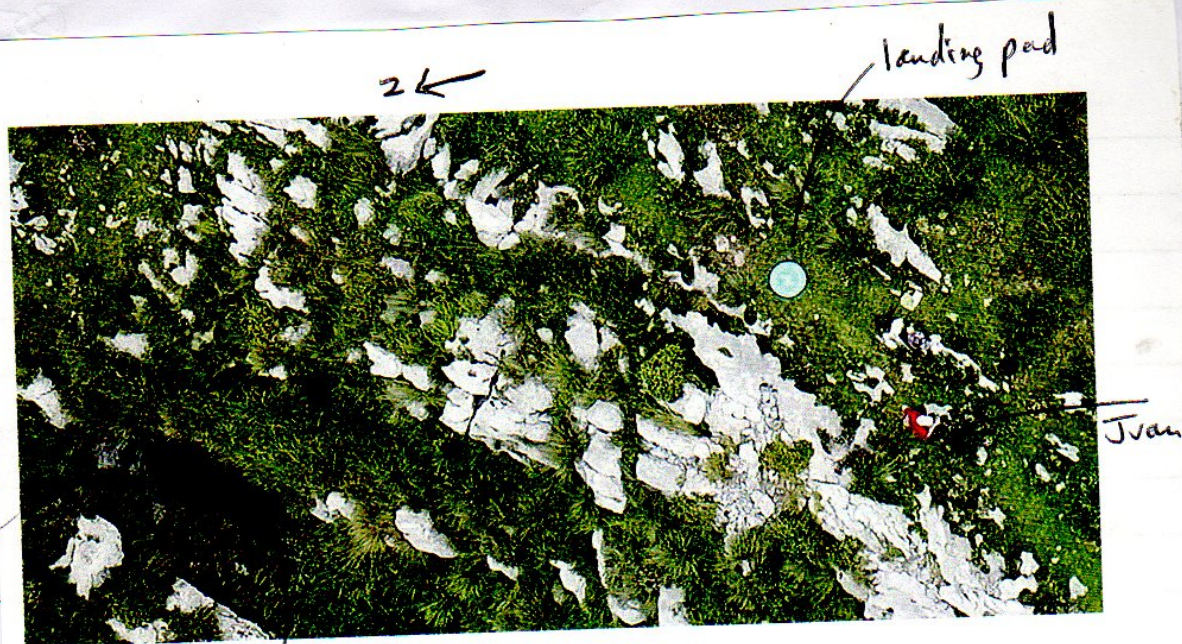
With our return ferry delayed a couple of hours for technical difficulties we had the opportunity to go underground en route. We fancied a surveying trip and Phil suggested getting the survey centreline for 0100 Cueva de Basura in Riano. He provided us with a copy of the beautifully drawn survey by DCC-MUSS from 1976 and Juan provided us with the location map.

Accessed down the gentle brambled slope to the entrance of a steeper large rubbish slope which continued deep into the cave. The way on is at the end of the entrance chamber through the boulders. The way on passes through a large chamber with sloping sides and deep pits. The 2 areas drawn on the survey which looked to continue unknown were small low chambers which closed up. The way on to the North East passages is through a low crawl at the top of the chamber. This continues low for 10m before opening up into a stooping passage. The south west end closes down with large boulders and blocks fallen out of the ceiling. Heading North East the way on is through a squeeze up into the higher level. The end of the North East passage and the parallel passage end in bouldery breakdown. No draught in the cave. Bones scattered throughout along with guano and a fat rat was spotted on the top of the rubbish heap. Photos taken at various areas in the cave.

Surveyed Length 182m

We exited the cave and our satnav said we had 15 minutes spare before our latest check-in time at the port. We raced off hastily only to be met with a horse and cart full of grass on the Riano lanes. Getting passed this we then came across the slow bumbling fish van and then human traffic control for the hedge trimmers! Thankfully this didn't change the E.T.A times too significantly. Disregarding Waze satnav route we took our usual shortcut to the Puerto but we didn't recognise the area at all - new roads were under construction and we found ourselves on a road heading away from the port! Turning round at the next possible junction the old signs were still in place and we managed to get into the port without having to go through Santander centre. It has been two years since we were last here and the routes weren't as familiar! We breathed a sigh of relief and cheerily drove along the dock road with 10 minutes to spare. We thought we were home sailing but were suddenly brought to a halt by a flashing red light and a closing barrier... the draw bridge was lifting up and we were on the wrong side to get to the boat! Di contacted Brittany Ferries with our predicament. Within a short time we received a call back telling us the draw bridge should be lowering. Indeed it was, we checked in with 30 seconds to spare!





unsuspected
black hole
Site: 5085

11/8/21 Lloyd C, Fran McD, Mike T,
Carol S, Oscar S, Linda D.

El Naso.

Went to inspect sites that lie above far end of
Hestajo (#71). Could not find 614, 1380 or 1381.
See Fig. 1 on next page.

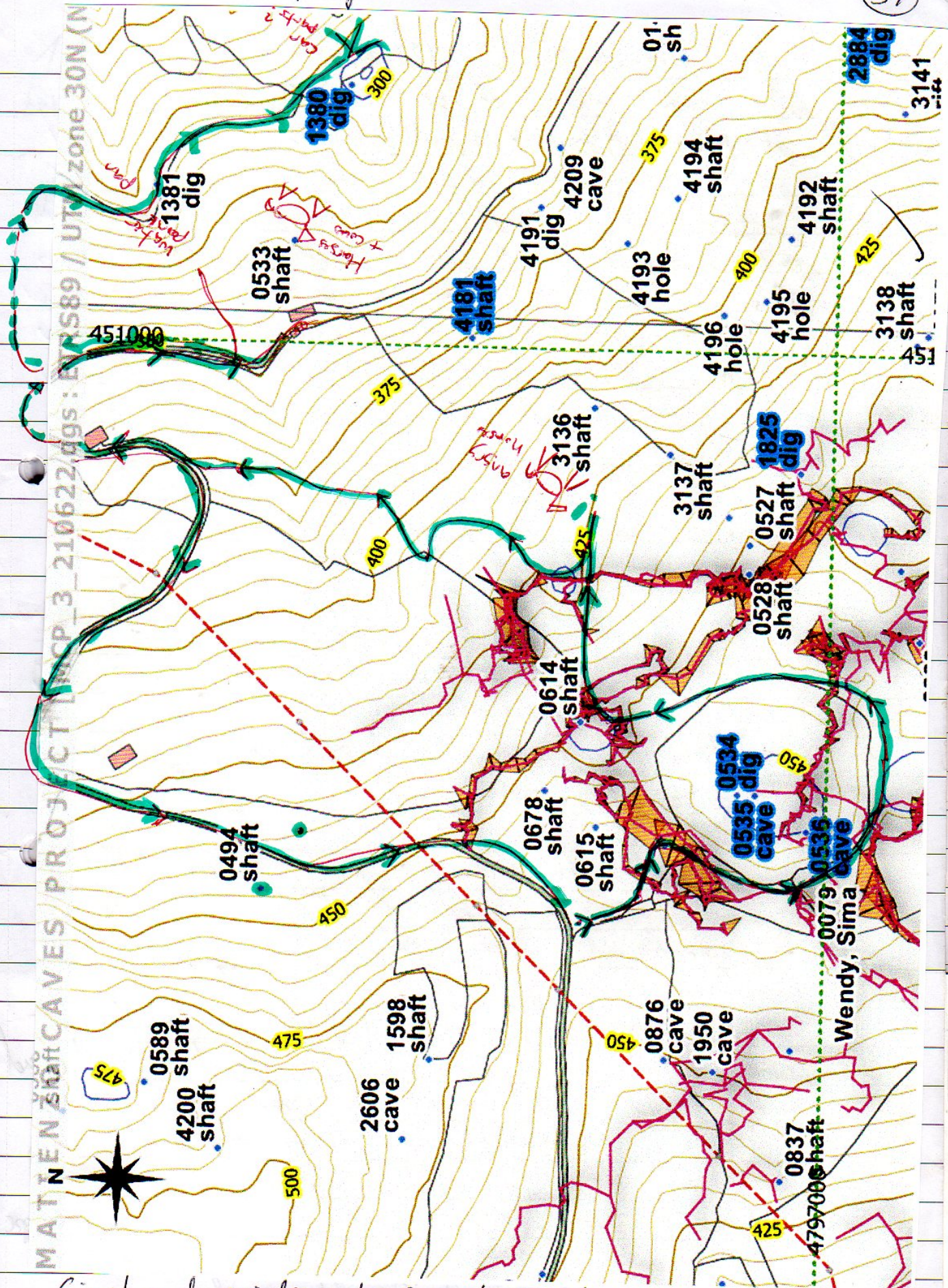
Could not access 3136, 4181 because of angry
horses (AA); or 533 because of angry cows
(AA). Possible new site: 480713, 4797200, clocked day

614 - Overgrown depression, muddy floor, & cow skeleton
(smelly). No cave.

1381 - Could not find the twin burner gas hob, but
did find a pan. Move over there is a calcitic
reservoir catching the water from the field. ✓

1380 - Could not find anything of interest.

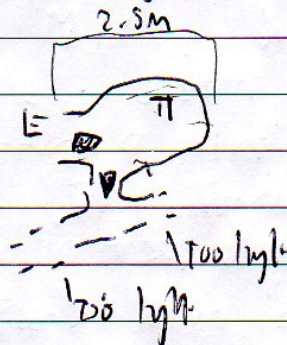
Significant evidence the farmer is using the area as his own



Significant evidence to suggest the former is using this area as his own personal tip.

3536 - Alex Mitche + John Proctor 12/08/2021

Went up to look at the unventered cave. No draft 2.5m long all ways closed down after a small chamber



gsc

12/8/21 0025 - Disco

Lloyd C, Fran McD, Baldy McS

Venture down Pinto Gallery to lat Series to explore NE question marks. Unbeknownst to us these leads were in a flat out crawl. However, these are very, very promising leads. Lots of darkness & a big echo. The first, the dog, consisted of moving a large slab of rock. This was done with a crowbar & leg power & a sling (BIG BOOM!). The new 1.5-2m squeeze (little breaths only) pops out into a large 3m diameter pitch, 11.5m deep & 3m up. This is drippy, contains a rift & has a window at floor level which looks promising. See fig 1. To descend this would require ladders bolted before squeeze or the squeeze being a traverse leading to a rebe lay slightly above. The second lead, the pitch, has no obvious rigging points. Attaching the rope to Mike & Fran, the rope did not touch the floor. Abseiling most of the way, I could see a rift leading to a tight section. See fig. 2.

This trip was mired by the ~~stream~~ ^{main stream} ~~main~~ stream way being brown, ^{+ green} murky & smelling of shite. The only section without poo ~~was~~ was between Lonto series & the junction with the main stream passage to the Pinto gallery, see fig. 3. What is normally a very enjoyable trip in an active stream way is now something you try to avoid & is unpleasant.

Fig 1.

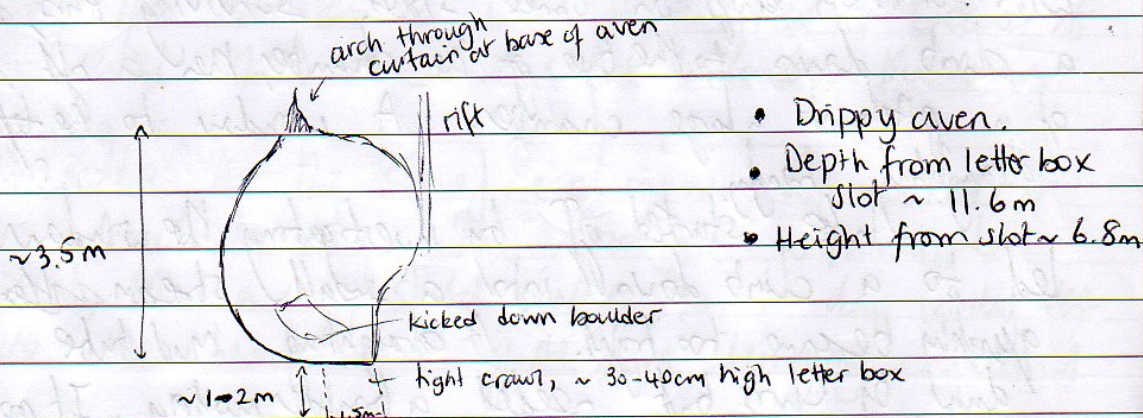


Fig 2.

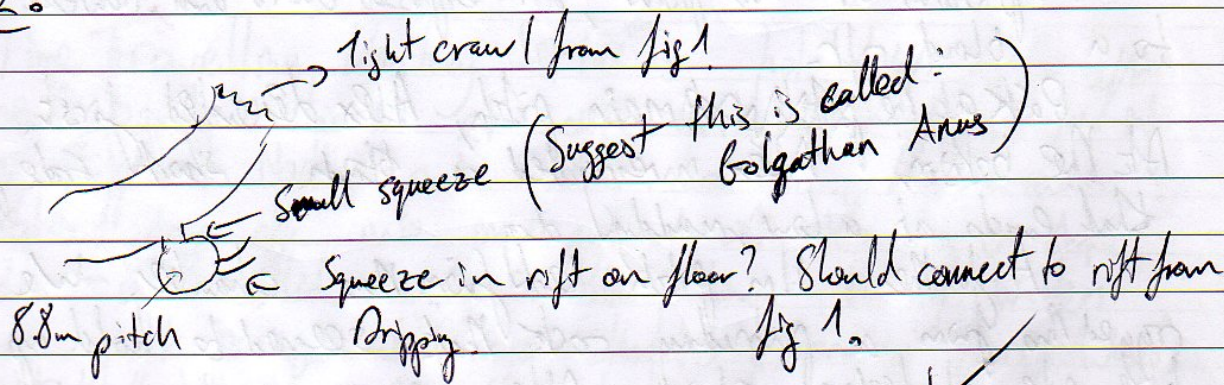


Fig. 3.

blank

Wednesday

11/08/21: Mostajo, Alex R., Chris S., James C.

Went back to push the open lead we found on Monday. We made good progress and reached the start of the new extension in about two hours. After a short dinner break we started surveying in.

This starts with a ^{blind} drop down onto a ~~blind~~ pyramid with a ~~45°~~ drop on three sides. Surveying this, ~~that~~ led to a climb down to the base of the chamber, then a rift to the top of a pitch into a large chamber. A window to the ~~left~~ ^{right} was draughting strongly.

We started off by investigating the window. This led to a climb down into a small stream where that quickly became too tight. A draughting mud tube here was dug by Chris but needed a boulder moving. It probably joins up to other known parts of this series though.

Upwards at this point, an exposed climb and traverse leads to a blind rift.

Back at the ~~pitch~~ ^{main} pitch, Alex descended first. At the bottom, Alex investigated a black short side passage that ends at a low muddy dog.

A further 11m pitch led from this chamber. We rigged this from a protruding rock that seemed to hold up the a huge pile of heaving choss. After some unmuting and talking, we decided that this was bedrock and not a loose boulder. Chris gingerly descended into a large, abandoned stream passage 3m across. This was excited for a while, but cragged out at a black sand wall after several metres on the ~~obvious~~ ^{obvious} direction, but continued in the other direction ~~then~~ through a crawl into a large chamber, which entered through a window back to the top of the pitch. James was already halfway back up the pitch by this point, so swung into the window with the rope to avoid having the others

having to reuse the dodgy belay. We pried a chunk out the opposite side of this chamber into a high rift. At the top of the rift was a crass MASSIVE PASSAGE above a boulder choke. Excitedly, we searched for a way up through the choke. A sneaky, very loose climb led up to a squeeze through into the blackest exhilarating blackness.

Alas, the excitement was short lived & ~~it~~ it was soon revealed that this was back in the main passage - bigger.

At the top of the climb was an unclimbed rift that we surveyed to a dry. This was an contained a left chimney climb, then a sketchy traverse, to a dry leading west. We then headed out of the cave, descending as we went.

Passage description: (0071-21-03)

"Time Travelling Donkey Series": hole down on the left beneath boulder climb at south end (just before junction into big stuff with Northern and Southern branches). At side down reaches drop off onto mud pyramid with 15m drop on three sides - ~~and~~ ^{care} needed. A scrambling down through boulders gains rift passage into large chamber (Donkey Three Ways). Right through window leads to climb down to bright streamway or climb up to exposed climb into blind rift.

Back at the chamber a 25m rope allows descent an exposed drop-off leads to the head of an 11m pitch ~~take a streamway~~ — Pin The Tail On The Donkey — down to a streamway — DGB streamway. Then the exposed drop off and the pitch can be rigged with a single 25m rope. ~~South in the streamway~~ ~~Back to the South in the~~ streamway ends at a blank ~~stone~~ sand wall. North leads through a ^{narrow} crawl up into a large chamber. A window

at the top of the pit also ~~gives the~~ connects to the same chamber. A climb up out of the North end of the chamber leads to a large rift - Burroboros - that leads to a ~~barber~~ loose climb up through a boulder choke area with a very tight squeeze, back into the main passage, two survey stations North of the original entry point to the "new series." (11/4)

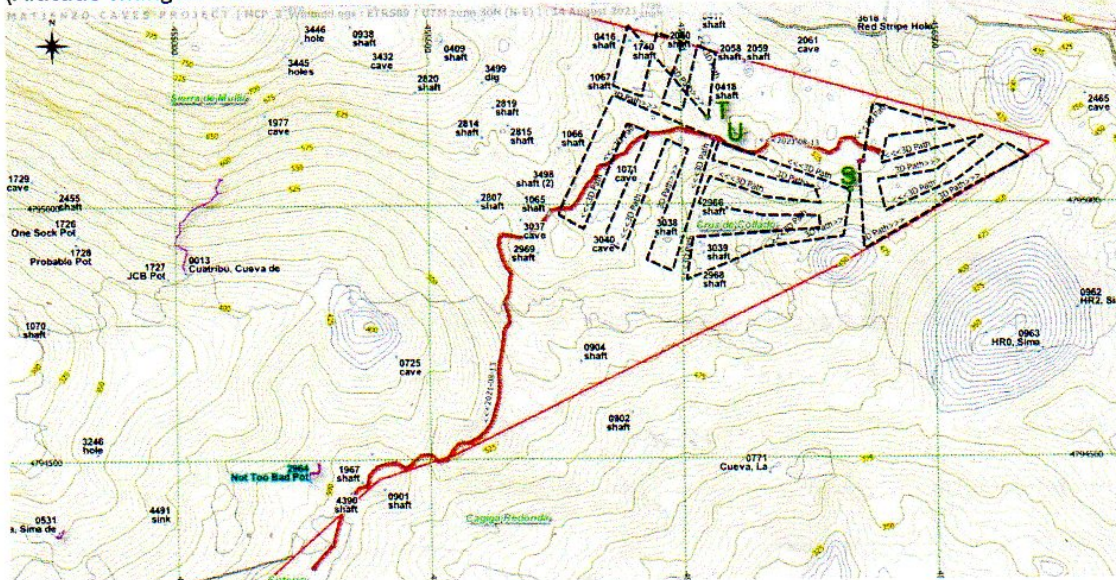
Tie in point to existing survey:

0071-13-04.13 - 0 (0071-21-03) start of desc

0071-13-04.11 - 41 (" ")

13th August 2021

Juan up onto east Mullir aiming to finish the 5 pre-planned flights and panos. Decided that to reach the same area in the future it is probably less hassle and time to walk up on the track to the north then down to 525m altitude, even though the distance is more than double (1.7km vs 4km). (Altitude changes: from the south - 475 - 600 - 525m; from the north 460 - 625 - 525m)



Flights T, U then S carried out in less-than-ideal conditions as the clouds were down. Black holes noticed when viewed later.

James, Alex and Chris appeared to do "Drone Pot 2 / Toad" (site 5085) See separate account.

(Photos of descent prep in 210813-DroneE-Mullir folder; drone video in 210813-DroneE-Mullir/Hole folder)

43

From: r.skorupka@btinternet.com,
To: uzueka@aol.com,
Subject: thefts
Date: Fri, Aug 13, 2021 10:23 am

Hi Juan

just for info ; my friend from asturias, Adrian says that theft by 'proper cavers', ie. well beyond where idiots could reach, is the new plague in Spanish caving. His group has had gear taken, inc. a drill , from deep into a project of theirs. Sounds like nothing is safe ?

Rupert

13th August 2021 CHRIS, James, Alex

This is the location data from my phone (ignore the top numbers, but the latitude and longitude should be right) and an entrance photo for the small cave we found on the walk across to the bigger one today. 5m deep and 3m long, no sign of any continuation.

New site 5088

43.308426 -3.542794 is 30T 0455983 4795211

+++++
+++++

Some entrance photos and location data for the cave you found with a drone. Site 5085

43.307374 -3.537314 is 30T 0456426 4795085 ← use this
We found a big toad at the bottom, so suggested the name Toad in the Hole, but feel free to call it whatever you like.

Chris, James and Alex 13th August Site 5085
We went to drop this cave that was found a few days earlier by Juan and his drone. It's a fairly wide shaft, 12m deep, with no continuation. Quite a nice shape though; reminded me of the Buttertubs. The dimensions at the floor of the shaft were 7m from E-W and 5m from N-S.

4669 - Mike, Alex R 14/8/2021

Went in to look at a possible traverse into passage over two pits 30m ~~down~~ we traverse at pitchhead. Found entrance hard to open due to a lot of bramble growth.

One in we dropped down the in-situ rope and did the traverse as far as I had rigged it two years ago. At this point where the dolomite descent drops you into the 2nd, the upper passage splits into two. The "left-most" "facing" in looks to get the highest, the right passage however looks flatter and appears to have solid floor.

It only took me further belt to get across to this passage ...

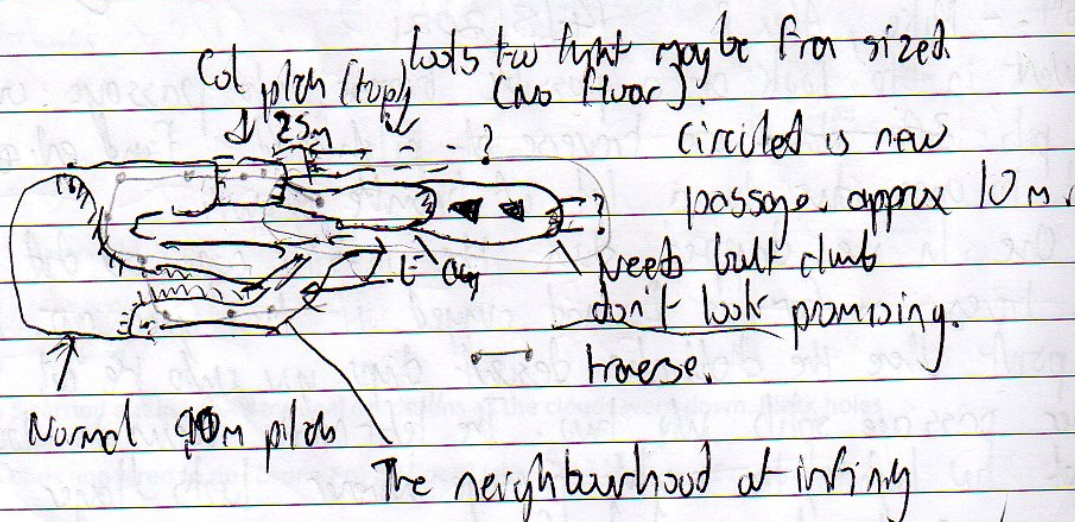
it was seen safe to get off the rope. However, the passage ahead was choked but lower passage could be seen above.

After a failed attempt where I fell off due to a ledge breaking away I was able to free climb about 4m up. This was a further over chamber with a sloping main milk floor, the passage above would need further climbing and appeared too small.

As there was plenty of time left I descended the col pitch left rapped last time to re-check the passage I saw at our level, also with a brighter light the 'big walking passage' appears to be nothing more than an alcove. Still the other shift is still yet to be descended. Despite it 99% going to drop into the same place as the other shift, there may be ways off, and there is that easy drop in the Helderberg deposit.

I derigged the col pitch and we took that rope with 55m rope and 5 molar chisel, hares in silver saw.

(1) The big walking passage was what I thought I saw 2 years ago.



Wed. 11/8/21 5045 Big Steve, Phil P., Andy Q., Pete S.

Further progress made, getting nearer to the potentially larger space just out of reach. Flawstone the size of a grand piano lid was lifted off and broken up to be pulled up the entrance in the kibble. Rock removed by capping and more successfully with plug and feathers. ✓

Sunday 15/8/21 0059 Phil, Pete, Juan + Penny meet up with Lucía and Jara from the Federación C.E., and David from Ozone and 3 (reporter/camera-man/driver) ~~at Paradería~~ from TVE at the Bar Paradería.

All to Cueva Molino for interviews re the parques colicos. Pete, Lucía and Jara answer questions and give opinions to camera.

Retire to the Baker's for drinks and chat. ✓

92

Sunday 15/8/2021 Shift-bashing 5072 on John P, Alex R

80 Dismal weather and drizzle did not deter us from a day at shift-bashing

5072: We used a tree for a belay and after extracting half a tree from the hole we managed to descend 5m to the shift floor. (CC198)

Exit was a too small further rift that can be seen dropping further down, for too tight needs widening.

To the west is a further 2m drop into approx 4m w/ passage choked by boulders at end.

1078 Found completely choked full of boulders, not descended

3396 could not locate LPS must be wrong.

Found 3397 instead, not descended as split noticed.

Walked back via 4064, must coming out of exit

looks interesting ✓

0084 - 16/08/2021 - John P, Alex R

Quick tourist trip to look at the wonders at this easy grade I can and take photos. John was impressed I should have taken him into Mustacho (easy bits at least).

Despite being a large chamber barely any draft was noticeable in the entrance. We are now off to the Pecos de Europa.

SITE 5067 Cambera (see 210816-LOC193-5067 for photos)

Sala del Apretón y Galería del Perfume • 16 agosto, 2021

Seguimos avanzando poco a poco en la exploración de la Copica Escarlata (LC193).

Entramos topografiando ya que en la última topografía había datos que se habían tomado erróneamente. Al final de la galería de entrada aprovechamos a revisar un pequeño resalte que nos deposita en una pequeña galería. Esta, recibe un pequeño efluente del cauce principal que acaba sumiéndose por debajo de una piedra y por donde no es posible pasar. Lo que buscábamos era intentar cortocircuitar el Tubogan y otro pequeño resalte donde normalmente siempre nos mojamos un poco y aparecer en el Pozo de la Alcachofa. [FOTO Haciendo la topografía y un bote de piña: 5067-LCam-2021a-01-galeria-de-los-cuerpos-estropeados-4]

Seguimos con la topografía hasta llegar al pozo de las Ventanas donde tras hacer un péndulo accedemos a la ventana fósil de la derecha, la Galería de los Cuerpos Estropeados.

El aire que nos acompaña durante el descenso se desvía por esta galería.

Ya que la entrada de la galería es cómoda, aprovechamos para comer, después, iremos hacia la Sala de la ONU donde dejamos un pozo y una ventana por mirar y nos acercaremos hasta el final de la galería donde el aire desaparece por un pequeño agujero para intentar desobstruirlo.

[FOTO Formaciones en la Galería de los Cuerpos Estropeados: 5067-LCam-2021a-02-galeria-de-los-cuerpos-estropeados-8]

Pero mientras comemos, la otra ventana colgada que queda aún por explorar enfrente de nosotros nos mira desafiante invitándonos a que nos acerquemos.

La ventana gana y dejamos lo que veníamos a hacer y tras hacer otro pequeño péndulo entramos por ella.

[FOTO Ventana de acceso Sala del Apretón: 5067-LCam-2021a-03-galeria-de-los-cuerpos-estropeados-6]

Aparecemos en una sala redonda y ascendente de unos 13 metros de diámetro, la Sala del Apretón, donde casi en su punto central se abre un pequeño agujero que da acceso a la pequeña Galería del Perfume de unos 2.5 metros de anchura y donde tras avanzar unos 20 metros llegamos una pequeña encrucijada donde todas las opciones se ciegan.

Despejada otra incógnita el próximo día habrá que intentarlo de nuevo en la Galería de los Cuerpos Estropeados.

[FOTO Galería del Perfume: 5067-LCam-2021a-04-galeria-de-los-cuerpos-estropeados-13]

Participantes: Toñín, Fonso y Gustavo

Google translate

Squeeze Room and Perfume Gallery • August 16, 2021

We continue to advance little by little in the exploration of the Copica Escarlata (LC193).

We entered surveying since in the last topography there was data that had been taken wrongly.

At the end of the entrance gallery we take the opportunity to review a small highlight that places us in a small gallery. This receives a small effluent from the main channel that ends up sinking under a stone and where it is not possible to pass. What we were looking for was to try to short-circuit the Tubogan and

another small projection where we usually always get a little wet and appear in the Well of the Artichoke.
[PHOTO Making the topography and a pineapple boat: 5067-LCam-2021a-01-galeria-de-los-cuerpos-estropeados-4]

We continue with the topography until we reach the Well of Windows where after making a pendulum we access the fossil window on the right, the Gallery of Spoiled Bodies.

The air that accompanies us during the descent is diverted through this gallery.

Since the entrance to the gallery is comfortable, we take the opportunity to eat, then we will go to the UN Room where we leave a well and a window to look at and we will go to the end of the gallery where the air disappears through a small hole to try to unclog it.

[PHOTO Formations in the Gallery of Spoiled Bodies: 5067-LCam-2021a-02-galeria-de-los-cuerpos-estropeados-8]

But while we eat, the other hanging window that remains to be explored in front of us looks at us defiantly inviting us to come closer.

The window wins and we stop what we came to do and after making another small pendulum we enter through it.

[PHOTO Access window Grip Room: 5067-LCam-2021a-03-galeria-de-los-cuerpos-estropeados-6]

We appear in a round and ascending room of about 13 meters in diameter, the Squeeze Room, where almost at its central point a small hole opens that gives access to the small Perfume Gallery of about 2.5 meters wide and where after advancing a few 20 meters we arrive at a small crossroads where all options are blinded.

Once another unknown is cleared, the next day we will have to try again in the Gallery of the Spoiled Bodies.

[PHOTO Perfume Gallery: 5067-LCam-2021a-04-galeria-de-los-cuerpos-estropeados-13]

Participants: Toñín, Fonso and Gustavo

gsc

5045 Dig La Secada - 18/08/21 Pete S, Andy Q & Phil P.
Yet more digging. Tried snappers. First round of two removed rock from roof, but RHS one did not seem to do much if anything - Stemming still in hole. Second round of two, went off with a dull bang but did nothing. Rock is full of small holes & some larger cavities, I assume these took up all the energy & fume. Then tried plug & feathers - work ok but slow. Now easier to get to near where vertical rift starts. Next dig could continue to remove ~~stuff~~ soil & loose rock, plus use of ~~some~~ plug & feathers. If not working big rock breaker & gen set needs to be tried.



20th August 2021

Juan & Penny up the Cantones track then down to park above Cueva de los Adillos (0034). Aim to take aerial panos and videos northeast and northwest of the barn below, flights Z and Z01 respectively. (See Drone folder)

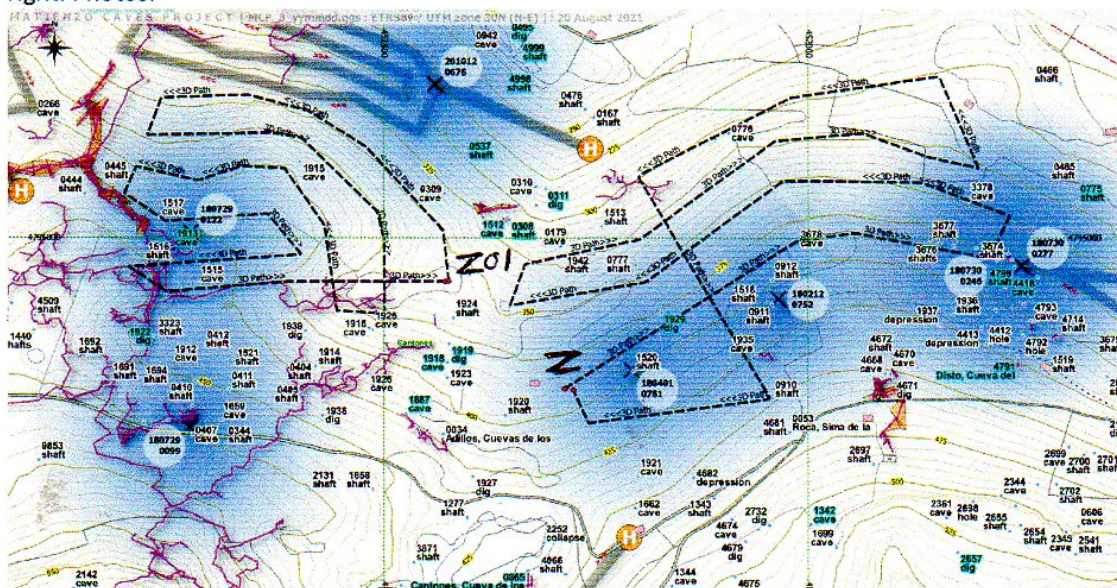
On the way down to the barn, at a prominent tree above the track there are two features which need a proper investigation, where an animal track passes between them. On the downhill side of 451770 4794756 altitude 421 is a depression full of vegetation, not entered. On the uphill side, gorse pulled aside reveals a couple of vertical decayed planks across the top of hole and possible drop. No stones or disto to further investigate.

Walked down to the barn where flight Z and the associated panorama were taken.

Drove further along track then walked down and out to the limestone promontory above site 1915.

Flight-Z01 and the associated pano were OK but 50m higher than planned for.

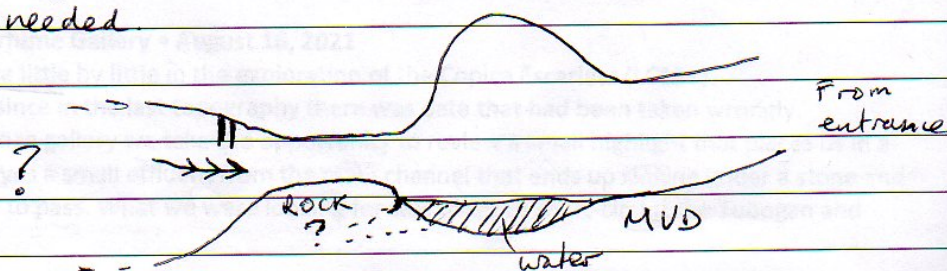
Returning to the "home" point, down below the barn, a re-run of flight-Z01 at the correct altitude soon lost the drone connection as it rounded the corner towards Coterón, so this flight was abandoned. (Start and end points need setting at, possibly, 1915 to have corner coverage left and right. Photos.



Two - uphill @	451771	4794755	5089
downhill @	451768	4794758	5090

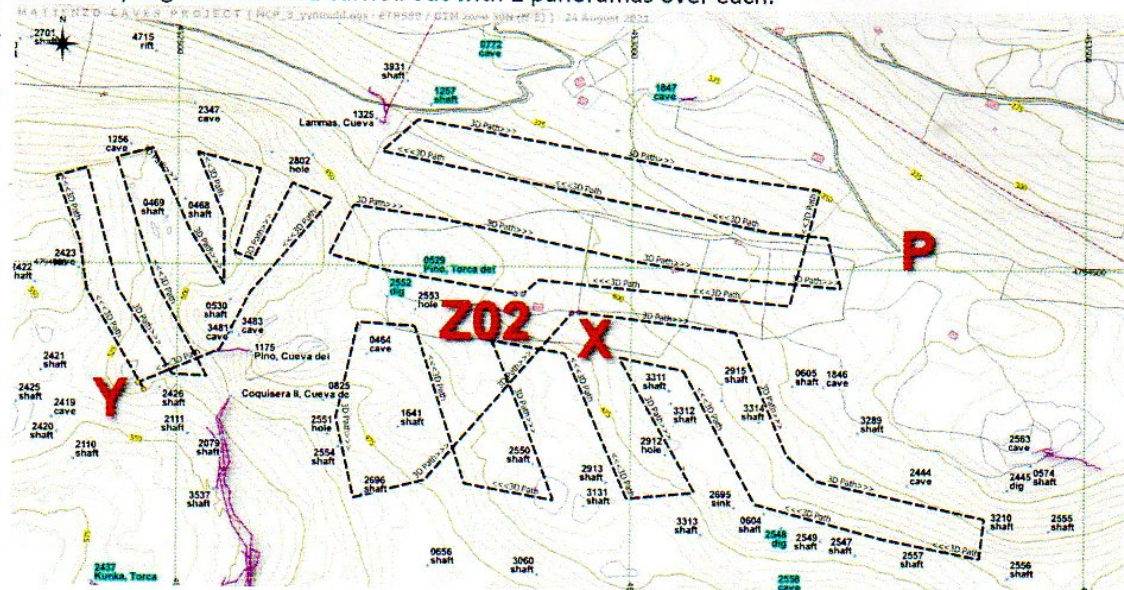
22/8/21 - Gusano - 5081

Attempt to reduce the water level in the pool formed where the floor was dug out. It should be possible to drain it into the lower passage on the other side of the blowhole. But it was unsuccessful and more than hammer, chisel and small crowbar will be needed.



24th August 2021

Juan out droning using pre-programmed flights X, Z02 and Y – below and above Cueva Coquisera (0039). Parked at P, but found that a hire car could easily have been driven to the barn between the starting points of flights X and Z02. (This put vehicles within easy walking 300m to Coquisera entrance.) Flights X and Z02 carried out with 2 panoramas over each.



Walked up to the Coquisera entrance finding it fenced in, presumably by the farmers. (Photos and video). The fence also extends in front of a tube, not shown on the survey.

Walking round to the right (N) of the entrance immediately came across an undocumented cave behind brambles. This is 2m wide and 1m high, hands-and-knees to a constriction where the passage can be seen continuing at least a further 4m. (photos and video).

New site number: 5091 30T 0452554 4794375 Alt. 499m (Note that the entrance position for Coquisera is about 20m away, at the southern wall).

Finished off by droning flight Y along with 2 panos.

Also some photos of 0825.

gpc

25th August Phil, Steve + Pete + Andy digging in 5045

More slow progress. used plug & feathers, but rock seems near to crack & just bits break off. Needs a longer at nose dig.

27th August Phil, Pete, Juan into Leñada (0048)

Phil starts surveying from the cabin on the slope up after the Duck. Pete arrants. Juan takes some snaps at Stuffed Monk, the coloured curtain, and in Blood Alley.

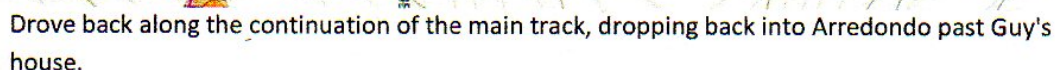
All meet up after Phil finishes the 25th survey beyond the start of Blood Alley. BATCH 0048-21-01



Penny and Juan onto Piluca via the Colarao track over Cueva Vallina. Drone flights Piluca-04 and Piluca-05 flown along with a few panoramas.

A sink hole (**new site 5092**) has appeared on the walk-in track at 0451482 4793616 Alt. 600m, just before the yellow/white walking route goes off on the right to Piluca summit. About 1m deep, any water will flow down the "passage" which is developing under the track. (Length 3m). (Photos)

Near the top of the hill, **new site 5093** was found just a few metres north of 3277 (Piluca Summit Pot). Site 5093 seems to be a choked 4m deep pit with the entrance partly hidden in heather and grass. Undescended. (Photos)



20/8/21 Pete + Juan into 1289 to retrieve light left in cave
25 days ago. A couple more photos taken.

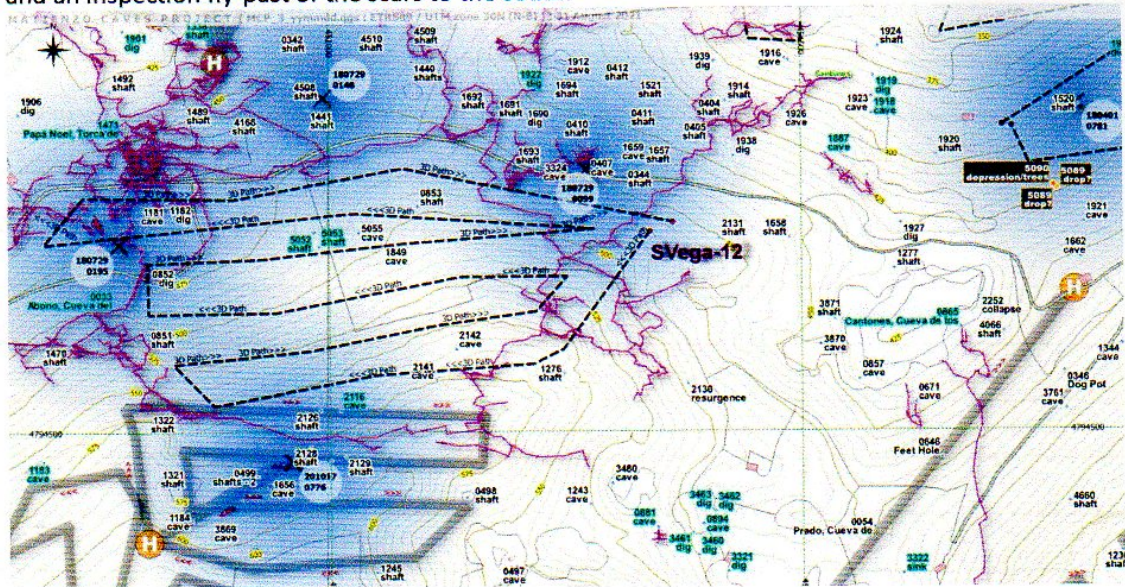
31st August 2021

Varied walking / droning for 3 hours at the end of the TV Mast track. Juan and Penny parked in usual spot then walked through herd of cows on the upper track to near the end barn. Sent drone up to do a "fly-past" (rather than a "fly-over" of the scars to the south. Pano also taken.

Walked down past Cueva de Prado (0054) and eventually picked up the track that runs past the resurgence 2130.

Flight SVega-12 flown from this track. The first two western-most parts of the flight were "not controlled" as the radio signal was lost. The drone carried on remotely, following the program. The third fly-over to the west was abandoned part way through and the drone returned to base. A fly-past of the scars above the home point.

Moved down to the main track and closer to the cattle-crush where an aerial panorama was taken and an inspection fly-past of the scars to the south.



On the walk back, Juan re-inspected sites 5089 and 5090. The sites have 2 tree trunks separating them. The upper site, 5089, has a cave behind the two planks and a possible crawl going off over a small drop (Photos). Site 5090 needs stronger measures to remove the vegetation.

1st Sept. Jan - drone flight C-2 up near the "White House" taking off from near Pabli's barn.

Jan + Penny up TV Mast track then down to park near 1927. Walked down to 5090 and secateurs some vegetation. Can see a base and a possible feature of interest (limestone) on the far side. May be best to drop into the depression over this feature through a gorse bush. ~~Many dead~~ Many dead brambles etc still to clear.

0733 – Vallina – 11th September 2021 emails

Hola Juan,

La semana de campamento fue muy bien, el grupo esta muy motivado y todos hicieron buenas migas.

Lo del material de Rupert ya me lo comentó el por mail y después cuando nos encontramos en Vallina. Yo también comente el caso con la federación Cántabra y le recomendé a Rupert que denunciara a la Guardia Civil.

Estoy trabajando en los datos de la exploración (justo ahora estoy en ello), he tenido poco tiempo para dedicarle al trabajo de oficina, espero tenerlo listo a final de mes. Hay mucha información de los grupos, se han topografiado 3 zonas distintas, tenemos muchas fotos/videos y memoria de cada equipo en sus diversas entradas. Tan pronto lo tenga te lo envío en Dropbox, si te va bien.

Un saludo

Vicente Barraquet

Hello Juan,

The week of camp went very well, the group is very motivated and everyone hit it off.

The Rupert material he already told me by email and later when we met in Vallina. I also discussed the case with the Cantabrian federation and I recommended to Rupert that he denounce the Civil Guard.

I am working on the scan data (right now I am on it), I have had little time to dedicate to office work, I hope to have it ready by the end of the month. There is a lot of information about the groups, 3 different areas have been surveyed, we have many photos / videos and memories of each team in its various entrances. As soon as I have it I will send it to you in Dropbox, if it suits you.

All the best

Vicente Barraquet

9/16/21, 3:53 PM

Re: Matienzo

From: smith_peter2004@yahoo.es,

To: uzueka@aol.com,

Subject: Re: Matienzo

Date: Tue, Sep 14, 2021 8:23 pm

Hello Juan

Here goes:

1336: ... A broken 10m pitch leads to a second 10m drop in a shaft about 4m in diameter at the bottom. The small outlet chokes immediately.

5081: In a small shakehole, the draughting excavated entrance slopes down to a slot into a small chamber. The way on, directly beneath the slot, is a 4m climb down with a handline into a rift. It continues through a squeeze to another small chamber, where a short side-passage enters on the right. A crawl straight ahead turns sharp left into a passage where the floor was dug out but this ends abruptly at a draughting hole in bedrock.

Cheers,

Pete

MATIENZO CAVES PROJECT