

LOGBOOK

Year: 2020

Season: autumn

Logbook pages scanned to jpg then combined into a pdf file using <http://smallpdf.com/>

Juan Corrin, October 2020

Autumn 2020

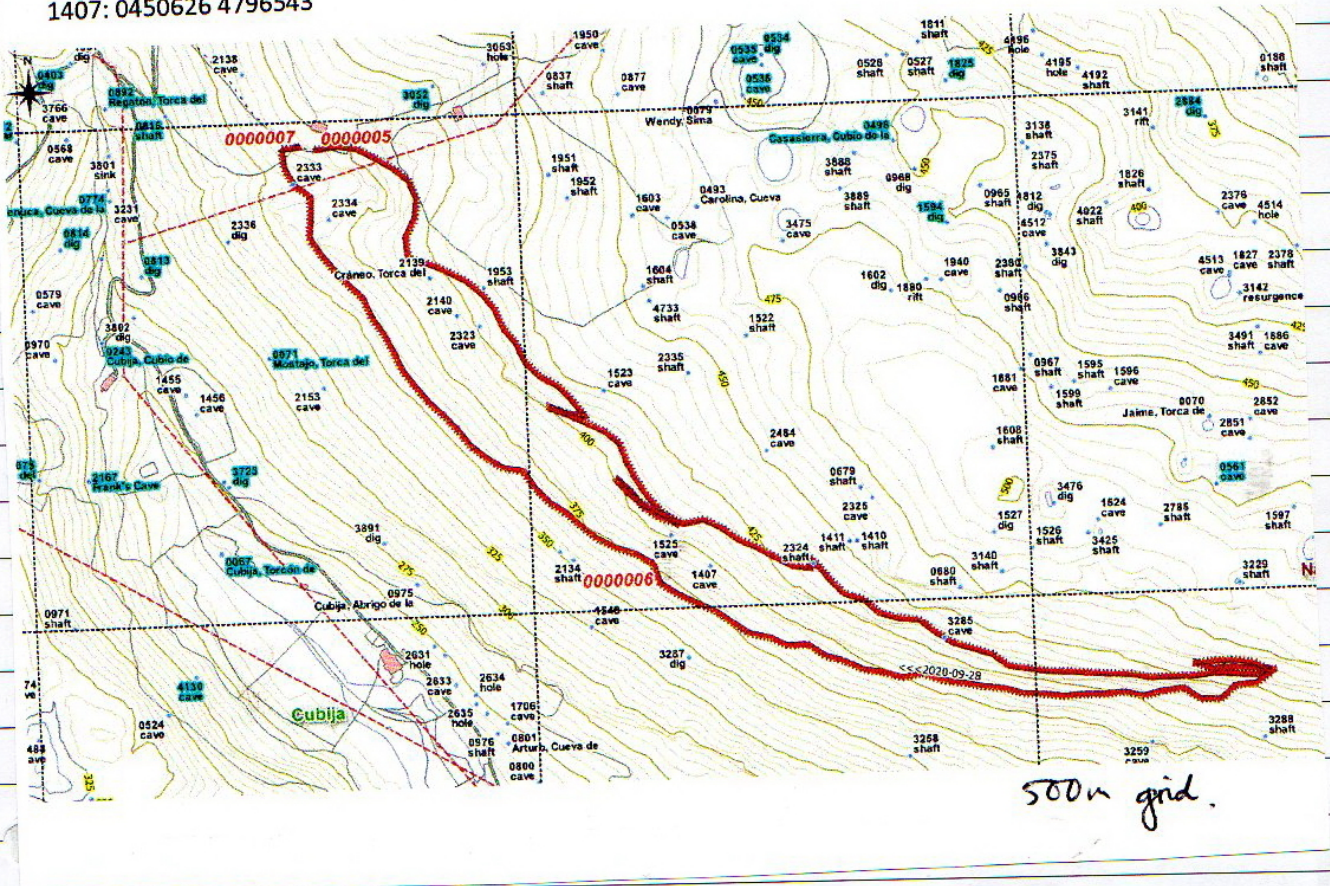
①

28th September 2020

Penny and Juan walking out along the Cubija side of Enaso. Started and finished at the end of the track above Armundo's house. Tried to keep to a route out (higher) and back (lower) that had no sites on the map - and found no new ones! Site 1407 was re-positioned with a new entrance photo. The area around site 1456 has been cleared and this was also GPS'd and a new photo taken

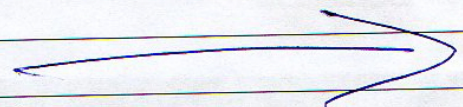
1456 : 0450185 4796685 at photo, adjusted to 0450190 4796690 for the cave entrance.

1407: 0450626 4796543

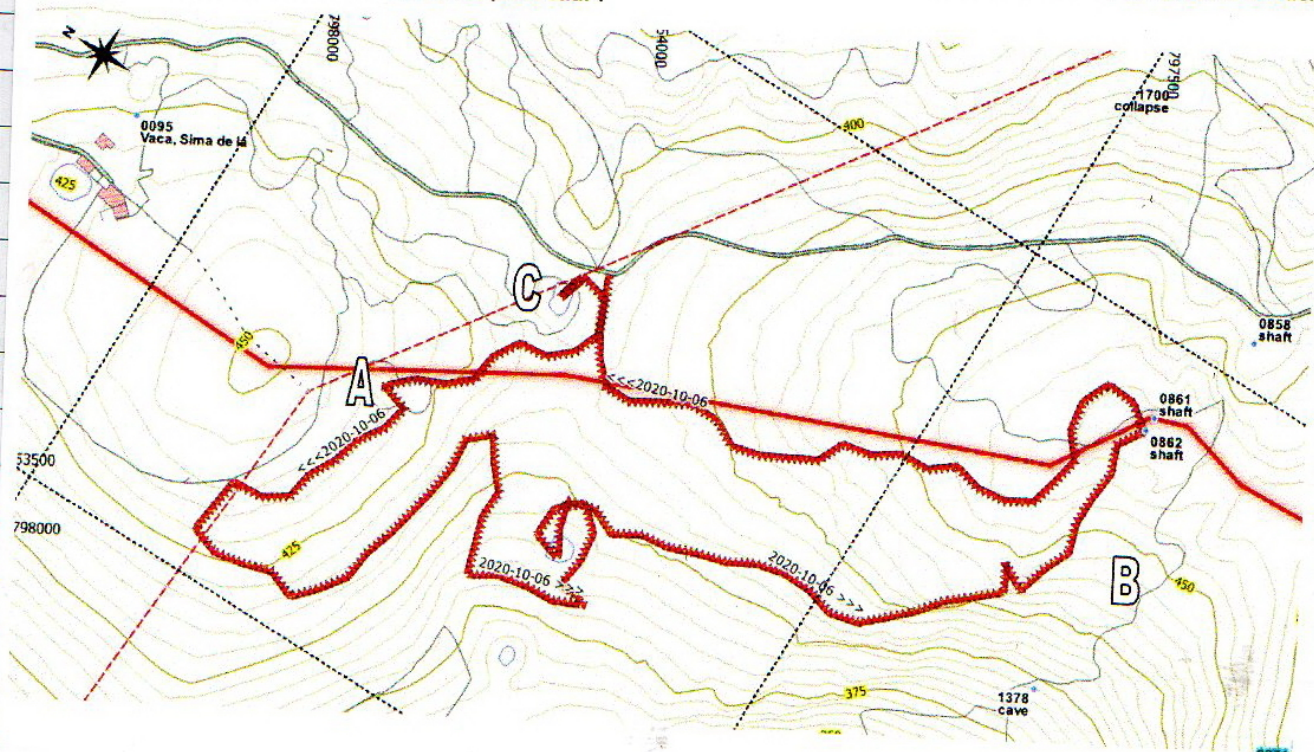


5023

5th Oct. After some heavy rain, lots of water flowing in the Arroyo de Sobarzo @ Villanueva. Photo taken @ bridge downstream of resurgence on side road.

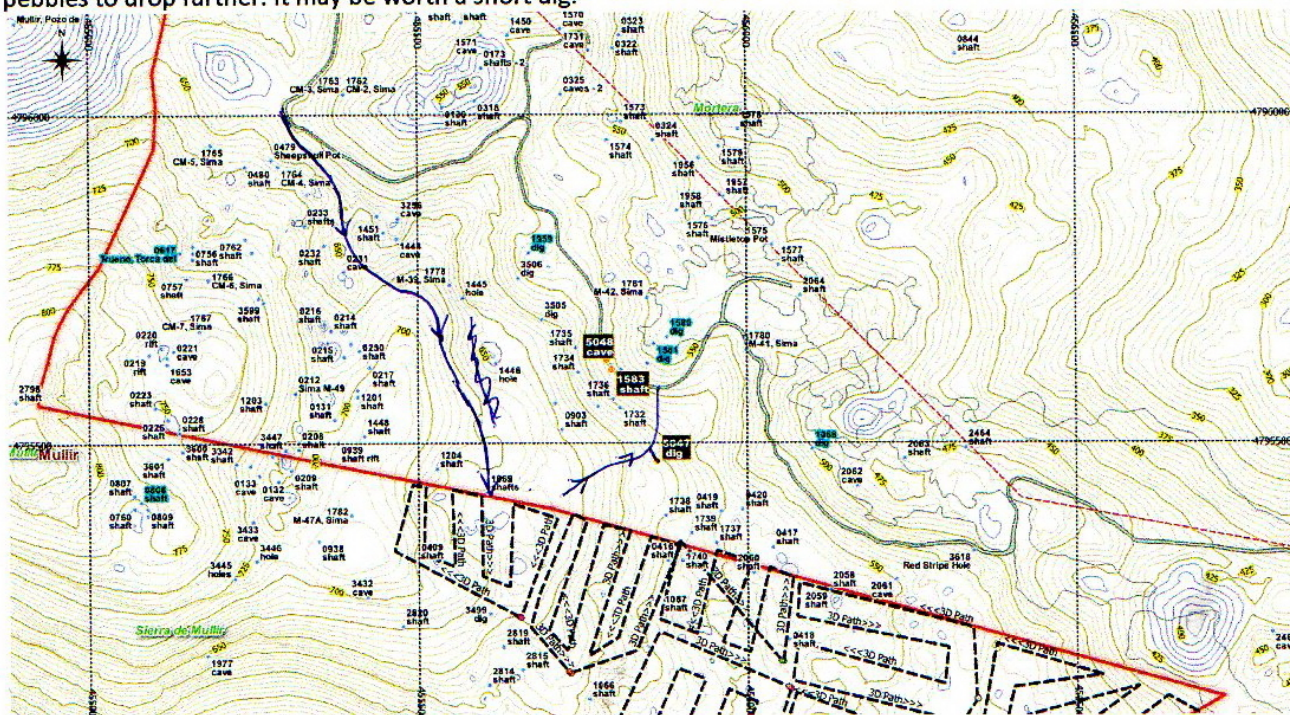


6th October 2020 Juan and Penny walking above Duengo, after parking on the Llave / Muela track. Looked at the north hillside first where a stand of tree near a pylon contain a couple of depressions (A). Then down into valley and across to the scars and cliffs on the N side of the main valley with 0272 Cubillones up on the opposite side. Past a small overhang "cave" (B) on a narrow track, sites 0861 and 0862 were apparently very close but not seen. Nothing of interest was seen on the walk back down to the car. The large depression hidden in the trees (C) just off the track was also investigated but also shows no potential !



3

A depression with a rock back wall and two large blocks. At the back of the largest block a small hole allows pebbles to drop further. It may be worth a short dig.



A number of holes seen on uphill side of track - adjusted positions of most prominent:
455794, 4795612 is possibly 1583 (marked on wrong side of track) but only a couple of metres deep?
a few yards further up a small cave is at 455786, 4795626 = **New site 5048**



23 and 29 July 2020

#5046, Louise Korsgaard, Torben Redder

GPS: 30T, 0454833, 4793609

Entrance on the field, hidden under boulders. There is no draught.

Entrance and underground pictures: By email

The rift entrance was a squeeze at the top and dropped 2m to a sloping soil floor. The slope continued for about 2m and then narrowed into a dig.

Torben

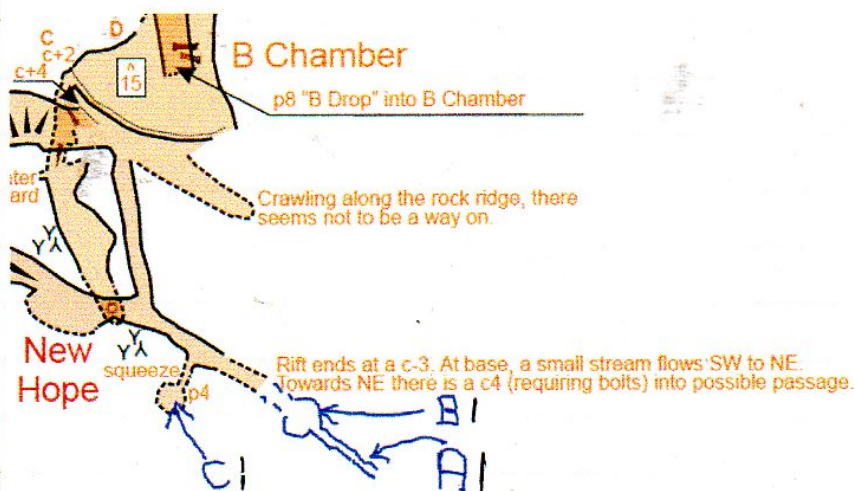
30 July 2020

#3234 (via Sub Phone entrance), Louise Korsgaard, Torben Redder, Peter Smith

This is Nutella Trip 2, a follow up on the Nutella Trip 1, 30 July 2019.

Nutella still seem to be a popular tool to persuade the kids (now 9 and 10 years) that it is a good idea to let mum and dad go underground. Last time we got a phone call from the kids, just before going underground, that they could not get the lit off. This time the Nutella jar fell on the floor and broke. This could have been a cancelled trip. But due to COVID-19 we had stocked up with food for at least a week, and there we found a new Nutella jar. This time we also checked that the kids were able to get the lit off.

We checked the area around B Chamber.



A| A squeeze into tube is restricted by stalls that need big hammer or snapper. There was draught, but we were there on a day with outside temperature 36 deg C.

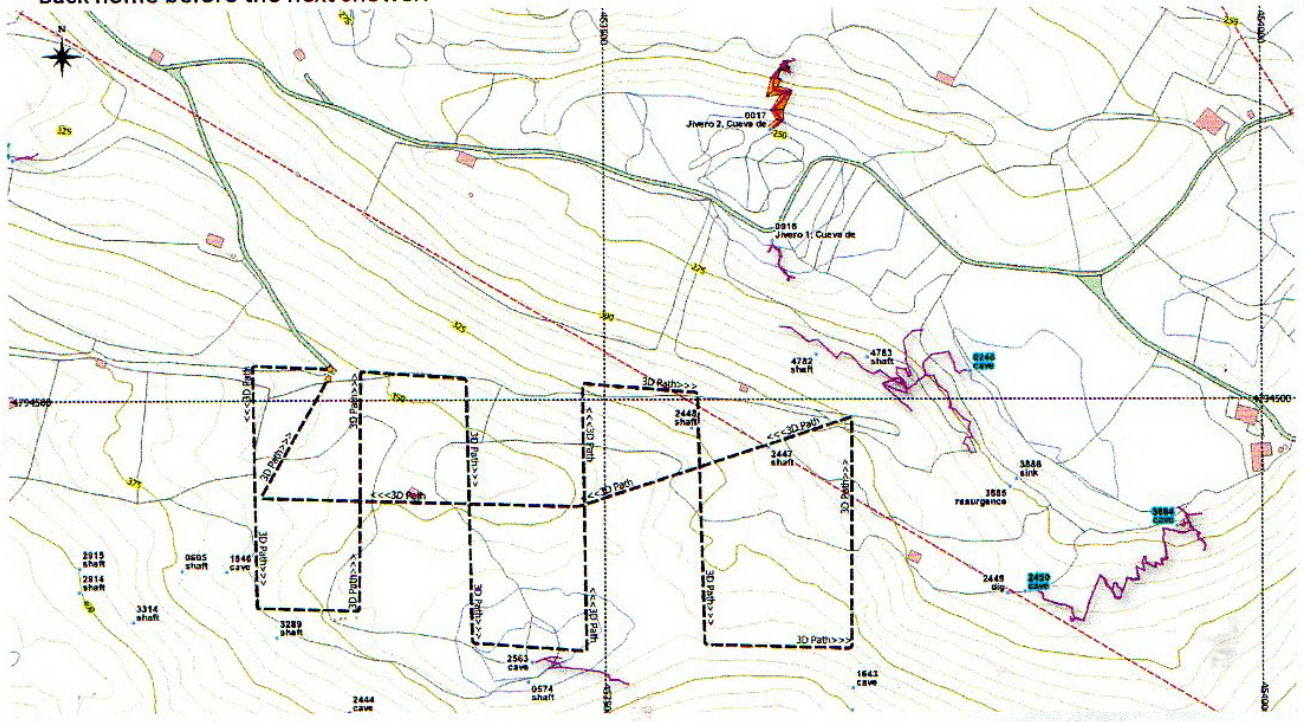
B| The climb up (c4) was done with two bolts, but the passage ended after 3 meters.

C| A squeeze in top of a crack leads to a p4. At the top of P4 there was no draught from below, but only from between the boulders above. At the bottom of p4 there may be ways on between boulders. We did not push it.

Torben

10th October 2020 Juan and Penny, between showers, drove to use the drone on "Flight P", the area between Jivero and Coquisera (0039). A mule was a bit wary but the owner and the dog seemed interested. Aerial panorama also taken which shows some interesting features on the hillside between Coquisera and Cruz Usaño. (Keeping the drone at 50m above the contours allows collision-free flight over trees and pylons.)

Back home before the next shower.



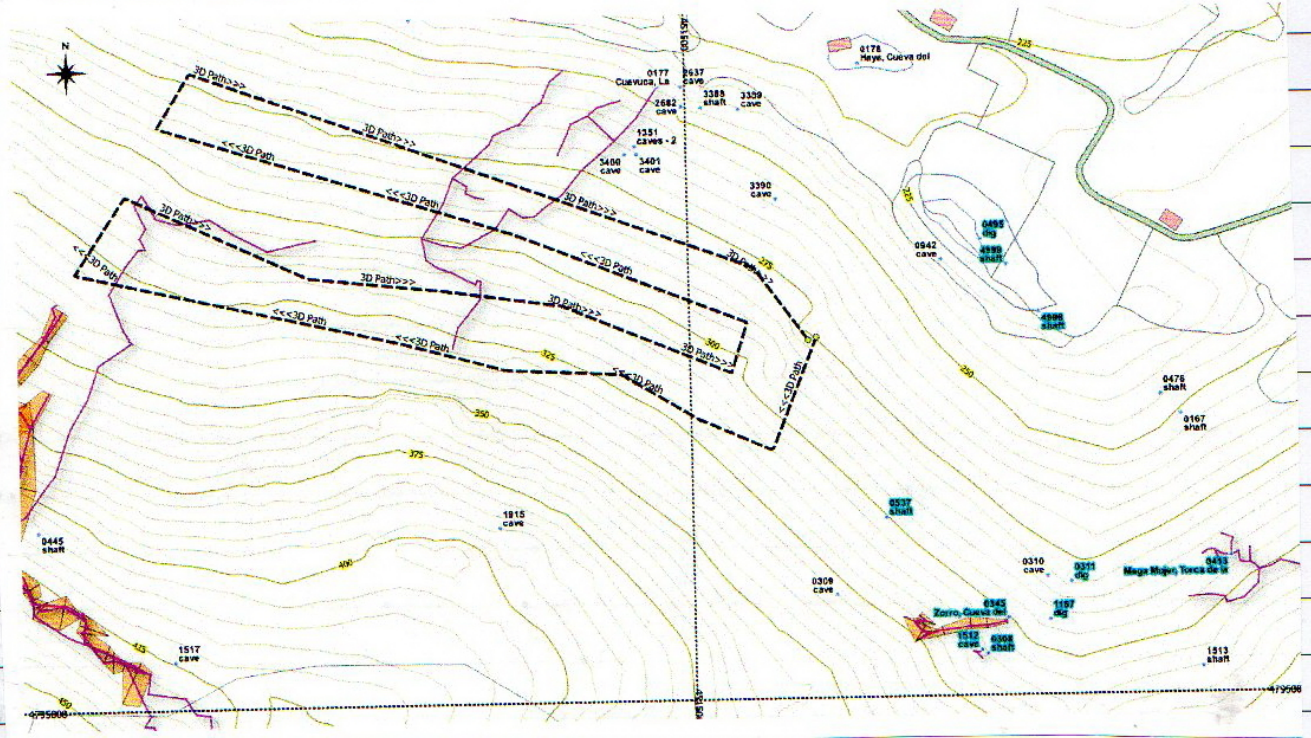
Good evening Juan
My walk wasn't too successful as I wanted to clear up the possible confusion between 461 and 1057, but I couldn't find anything in the area of 461 so I'm still no wiser.
One thing I'm sure of now is that 1000 and 999 are repetitions of 460 and 459. There's no doubt about the 'English' or deciduous oak tree, the only one or at least the highest one on the hillside. And the original locations are the better ones - where 1000 and 999 are located is a grassy hillside. On the plus side, I came across a couple of small (and probably choked) shafts that would be new. I'll sort out the grid refs and photos for you.
Cheers, Peter

Keep $459 + 460$ with their original locations.

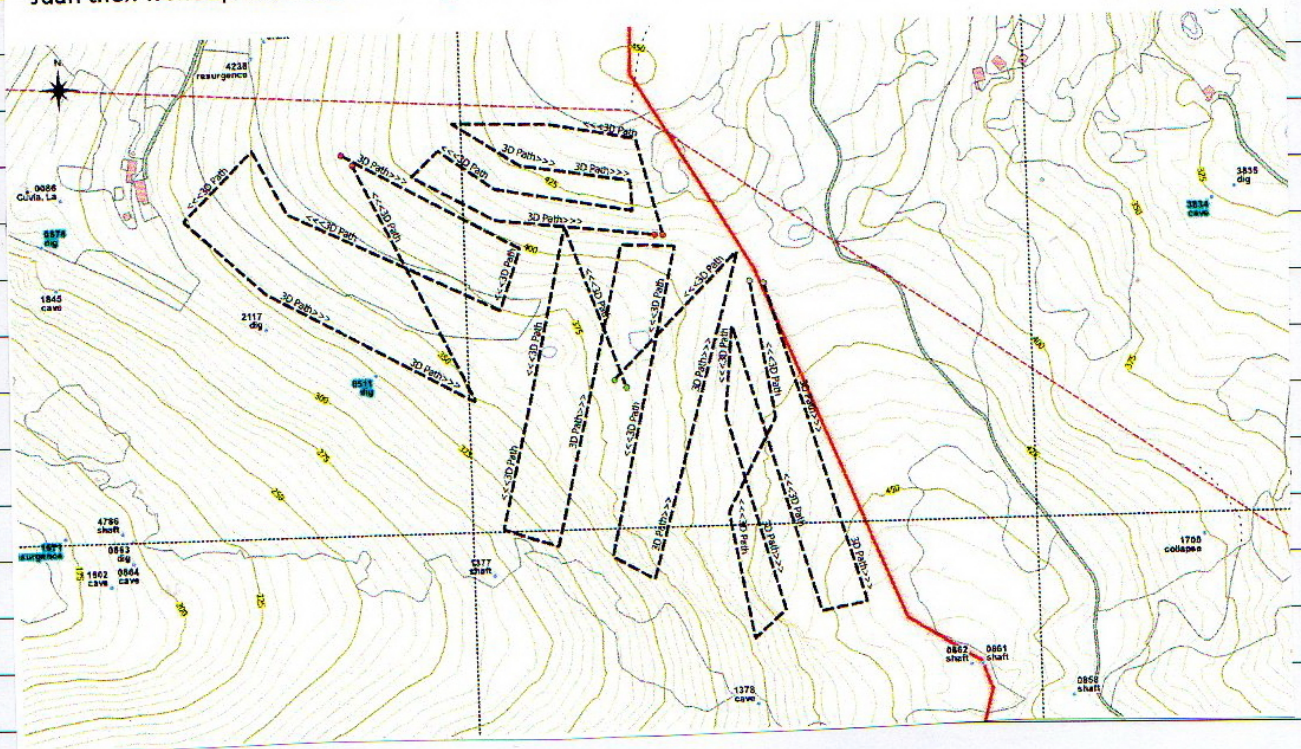
Re-found a small shaft / dig at the bottom corner of the limestone outcrop field boundary. **Site 4166** is covered with a large block which may be worth removing / destroying to reveal the short drop . Photos. 30T 450924,4794826.

[illegible]

Walked up to near 0413 Mega Mujer to send drone off on flight O on the other side of the valley.



Juan then went up to col above Duengo to fly A, B, D and E (above Pablo's barn and the "White House")



From: smith_peter2004@yahoo.es,
To: uzueka@aol.com,
Subject: Re: Seldesuto
Date: Wed, Oct 14, 2020 8:59 pm
Attachments: 5048-PS-2020au.JPG (5915K)

Evening Juan

Here's a photo of the first of those two shafts (I'll send the other in a separate email).

~~5048~~: 450098 4795283 281m Small shaft about 5m deep - 5050

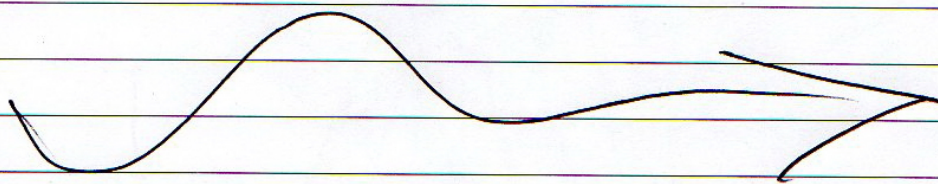
5049: 450088 4795287 278m Shaft possibly about 10m deep

Unless, as we said last night you want to reuse 0999 and 1000.

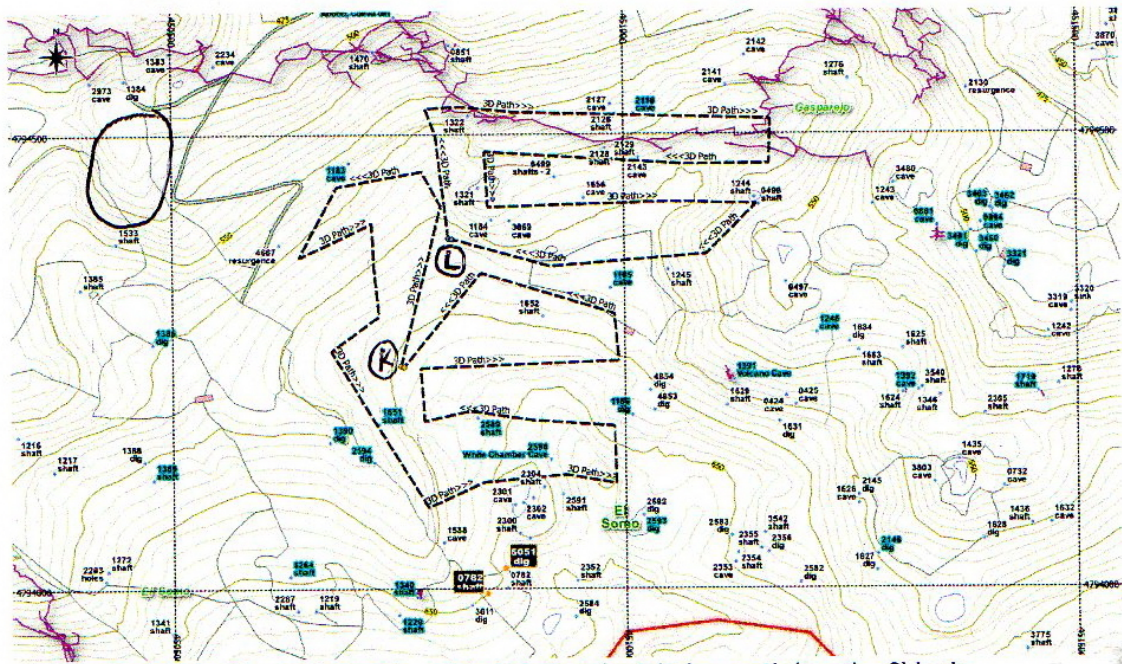
The grid refs put them slightly nearer than they seemed, but I suppose they're in the margin of error.

Cheers, Pete

5023
16th October In an attempt to surface survey the Fuente
at Villanueva Juan + Penny walked up a track from
the bridge through the wood to where a couple of stones
formed a bridge over the stream. From there the
cascade at the start of the "gorge" to the entrance(?)
could be seen but too much water to proceed to it
dryly.



17th October Juan & Penny drove down beyond the TV Mast and parked by the cattle pen / crush just before the track up the south, towards Abono. Walked up towards El Somo to take two aerial video flights (L and K) and three aerial panoramas. Lunch higher up, then walked up to the top to view Arredondo and wonder if the route from the other side might have been quicker.



The wood in a valley on the track up (circled above) might be worth (another?) look.

Photo of 0782 - which must be the depression down to the west of the track. New grid reference is 450846,4793995

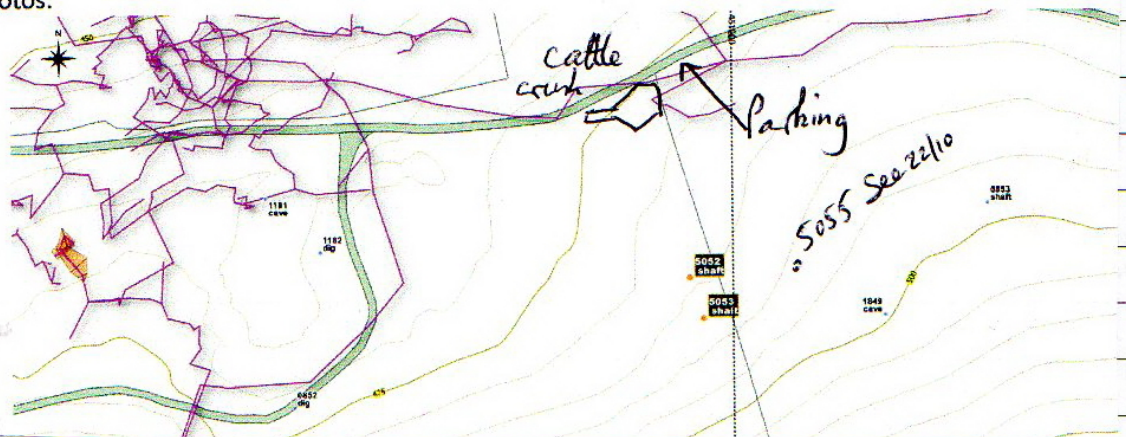
Just up off the track at this point is a covered hole with a couple of fence posts which may repay a quick dig. **New site 5051 @ 450866, 4794023**

Photo of 4667 just up off the track.

Back at the car, investigated a couple of holes just to the west of the fence that runs up the hill from the cattle crush:

New site 5052 - a fenced hole with a floor partially visible perhaps 3m down. 30T 450984,4794711 . Ladder needed. Photo.

New site 5053 GPS taken at N end of this apparently complex depression. Handline / ladder needed to descend - looks good - about 5m deep?. How has this been missed? 30T 450989,4794696. Photos.



18 October: Juan and Pete, Shaft-bashing day in South Vega. Walked from Reñada parking across the field and straight up the hill

5049: 16m deep. Pete descends a nice circular and slightly fluted shaft that doesn't change in size as far as the choked bottom. (Photos)

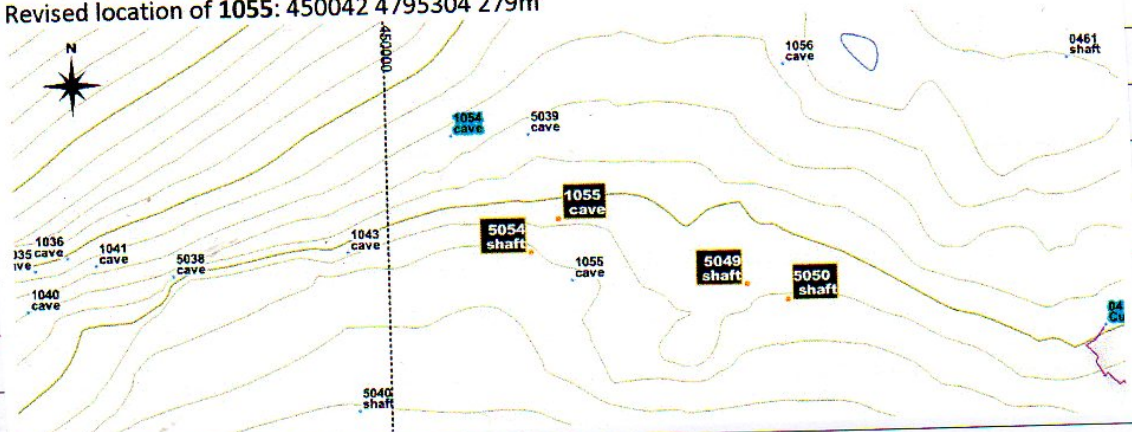
5050: 14m deep. Small hazel tree in the entrance. Juan descends very dry walls and floor, some bones and a small rift at the bottom. (Photos and video).

5040: 11m deep. Pete descends shaft overhung with trees and a large flat back wall, about 6m long at the base. (Photos)

New site 5054: Juan descends 3m deep, 3m long. Small pit almost over the top of 1055. 450035 4795296 285m

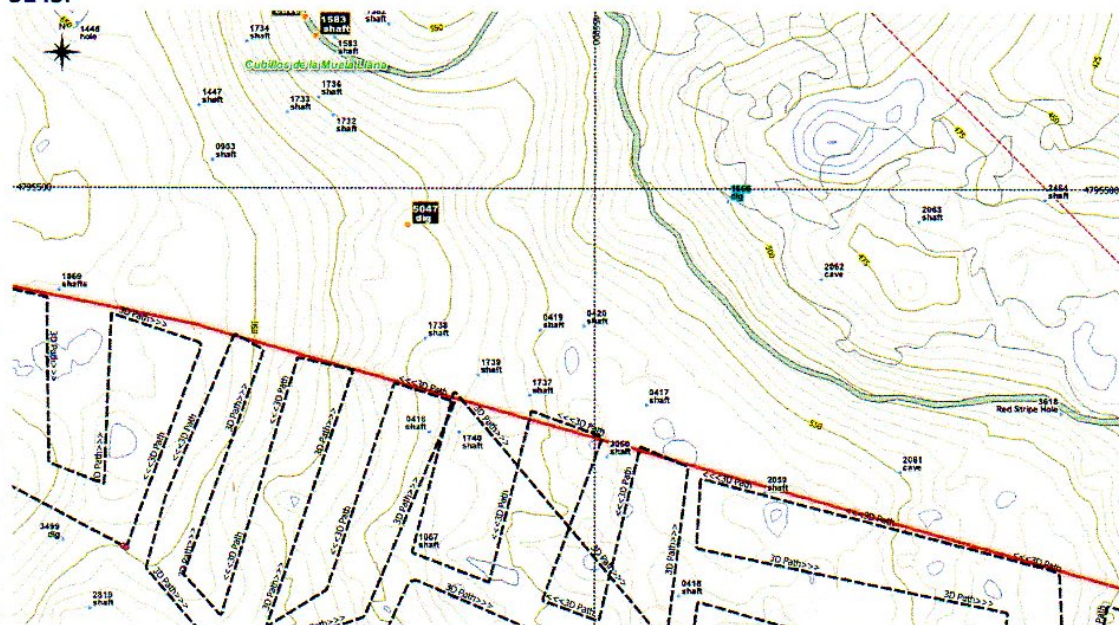
A short digression to visit **1055** (photo taken). A second digression to come out of the second entrance and watch a wild boar hunt in the valley, ending with the shout 'muerto!'.

Revised location of **1055:** 450042 4795304 279m



19th October Juan went back up on Mullir to try and fly the final five flight paths and aerial panoramas (see 8th October). Reached a point near shaft 0418 but the wind was too strong for the drone to follow any flight path. Walked back up the hill to meet the (much) easier, white/yellow route north back to the track near to site 1583. This "path" contours round above 1740, close to 0416.

Photos taken of **1739** (probably); **0746** - which does still exist on the side of a filled-in depression and **3143**.



20th Oct. A couple of photos of the Field wild beehives @ 3234

Llanío

21st Oct Photos of sink area @ Caravaca.

22nd October Peter and Juan drove to the cattle crush on the TV Mast-Azpilicueta track to have a look at the new holes seen October 17th. (Pete in the back of the car, all windows open, masks on - coronavirus-style.)

Site 5053 - a 4m hand-line / ladder climb down to a choked floor with a hidden, slightly draughting rift where stones can be thrown to drop down a few metres. Possibly worth snappering.

Site 5052 - a 4m ladder climb down the south side superseded by a free climb up the grassy north side. Again, a slight draught and an interesting bedding just off the bottom that may repay further attention.

New site 5055 (30T 451031,4794711) - a small depression with a hole at the bottom where a very narrow rift in black limestone with a mud floor is visible. No draught.

Had a look at **site 1849** - a cave under blocks, first looked at in 2003. Entry this time was down a 5m ladder climb into the cave where the original entrance was seen off to the west. Cave is about 5m long with a couple of fertiliser bags. A possible hole and dig is visible at the bottom / back. Where the ladder was dropped down on the south side, a rift with a drop looks interesting but will need enlarging to enter.

Site 0853 was also inspected with the top pitch well-covered.

An interesting area with other depressions and features visible on the satellite photos still to be documented.

(See map at bottom of 17/10/20)

22/10/2020

Buenos días Juan,

Ayer hicimos la primera entrada a punta.

Llegamos al caos de bloques que taponan el meandro, entre los 4 tras desobstruir i forzar algun paso entre bloques superamos el caos. Continuamos meandro aguas arriba hasta llegar a una cascada de 7/8m donde en el techo vimos una ventana

Escalamos el meandro unos 40m i accedimos a una sala fósil de dimensiones más grandes

En la cual exploramos 3 meandros en diferentes direcciones sin continuación

Hicimos una escalada de 27m en el techo de la sala que te introduce en otro meandro fósil que se colapsa en bloques, aquí se nos quedó un petzl push.

Volveremos a entrar mañana para escalar la cascada y continuar aguas arriba

Y topografiar

Sabes donde esta el ultimo punto topográfico?

Podrías pasarnos la topo completa de Azpilicueta?

Ayer la jornada fueron 16 horas, hoy descansaremos

Good morning Juan,

Yesterday we made the first entrance to tip.

We reached the chaos of blocks that plugs the meander, among the 4 after unclogging and forcing some passage between blocks we overcome the chaos. We continued meandering upstream until we reached a 7 / 8m waterfall where we saw a window on the roof

We climbed the meander about 40m and accessed a larger fossil room

In which we explore 3 meanders in different directions without continuation

We did a 27m climb on the ceiling of the room that introduces you to another fossil meander that collapses into blocks, here we got a petzl push.

We will go back in tomorrow to climb the waterfall and continue upstream

And survey

You know where the last topographic point is?

Could you pass us the complete survey of Azpilicueta?

Yesterday the day was 16 hours, today we will rest

REPLY

Well done - you deserve a rest!

You will have to guess where to survey from. It may be a few stations back down the passage. A screen shot from Survex is attached which you can compare with your main Vallina topo.

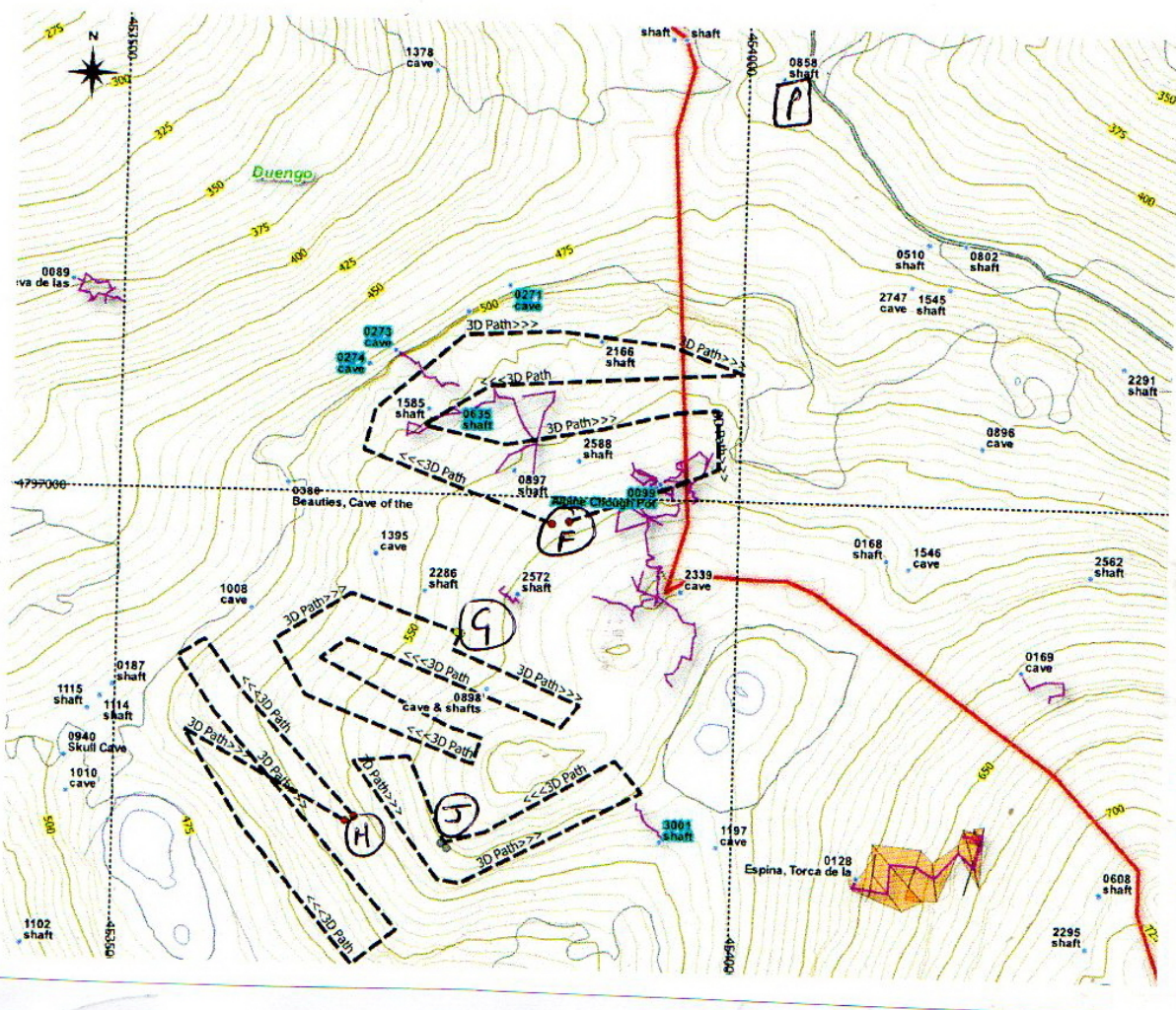
The complete topo of Azpilicueta is still drawn in pencil on graph paper - attached are 4 photos.

The scale is 1cm to 10m.

Good luck!

24th October Juan & Penny parked by the cattle grid and trough along the Lluenga-Mullir track then tried to walk up past the caves (0272 et al) under the cliff. Went far too high and ended up under the cliff above - twice. Eventually got low enough to pick up the trail rising to the correct scar. The trick seems to be to take the steep first branch to the right and not the even steeper route to the left - then head for the prominent silhouette of the lower cliff.

Climbed up and around to the left above 0380 to sit above the karst at Alpine Chough and 0635. Carried out Flights F, G, J and H with aerial panoramas at each, then contoured round to drop down the hill at 1546 to the NE. The route passes 0896 and drop down to meet the new logging track. This would probably have been a less fraught route in.



27/10/2020

Buenas tardes Juan, Ya estoy de vuelta en casa, la cosa del Covid se ha puesto difícil. Podimos hacer otra entrada el sabado, realizamos un reconocimiento por la galeria NY y volvimos a atacar la punta mas activa, donde escalé la cascada de 12m y continuamos meandro aguas arriba unos 120m, por un error de comunicacion, no pudimos hacer topo, se separó el disto del tablet en equipos separados. Hemos disfrutado mucho, si la pandemia nos lo permite volveremos en breve
Vicente Barraquet

Good afternoon Juan, I'm back home, the Covid thing has gotten difficult. We were able to make another entry on Saturday, we made a reconnaissance by the NY gallery and we returned to attack the most active point, where I climbed the 12m waterfall and continued to meander upstream about 120m, due to a communication error, we could not make a topo, it separated the disto of the tablet on separate computers. We have enjoyed a lot, if the pandemic allows us, we will return shortly
Vicente Barraquet

REPLY

A useful trip! We are on the ferry going back to England. Best wishes.

Subject: Cueva de Covachera 5036

Date: Wed, Oct 28, 2020 8:23 pm

Attachments: 5036.cdr (3454K), 5036.pdf (24K)

Juan

5036

Survey of this very small cave of archaeological interest is attached.

Phil

Recan this page + 10 + 16 + 4

MATIENZO CAVES PROJECT