

# LOGBOOK

Year: 2019

Season: Easter

Logbook pages scanned to jpg then combined into a pdf file using <http://smallpdf.com/>

*Juan Corrin, June 2019*





EASTER 2019

March 20th Pete in Cueva del Tinel with Emilio.  
Red dots and marks found low down on wall. (0658)

From: Angel San Juan <mortadeto@hotmail.com>

To: silviacerrada.scc@gmail.com <silviacerrada.scc@gmail.com>; Peter <smith\_peter2004@yahoo.es>; Miki katuskas <miguelangel.molleja@gmail.com>; Katuscas\_Rover <roberto.lumbreras@gmail.com>; antonio\_barragan@live.com <antonio\_barragan@live.com>; juancorin@matienzo.org.uk <juancorin@matienzo.org.uk>; miguel iglesias <miguel.iglesias.molina@gmail.com>

Subject: Exploraciones 2 marzo 2019

Date: Sun, Mar 24, 2019 8:48 pm

Attachments: MATIENZO.docx (729K), simas revisadas Matienzo.xlsx (11K), spanish flea.jpg (305K), spanish\_flea.svx (4K), spanish\_flea.tro (5K)

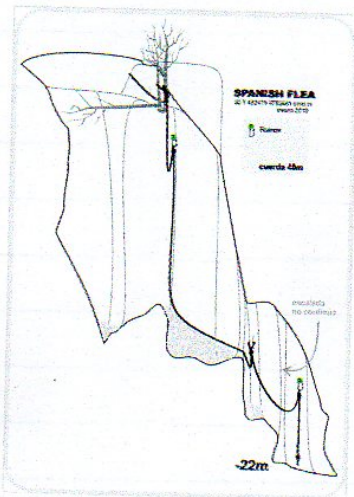
Buenos días,  
estos son parte de los trabajos que hicimos. Nos queda la memoria del grupo del pozo en Codisera y un croquis de una sima (0822). Mandaremos el resto en cuanto lo tengamos.  
En el archivo de Excel incluimos un resumen de las simas revisadas. La columna "I" marcada como "notas" tiene información para ser revisada o estudiada por Peter y Juan Corrin.  
Por otro lado, estamos intentando saber el número de españoles en el campamento de Semana Santa. Por ahora no es definitivo pero creo podemos ser más de 10 para los días 18 a 21 de abril.  
Toda la información está actualizada en dropbox. Hay un archivo marcado como control de cambios dónde pone las actualizaciones.

Un cordial saludo,

Ángel San Juan Gálvez

656 38 32 35

1 Attached Images



4951



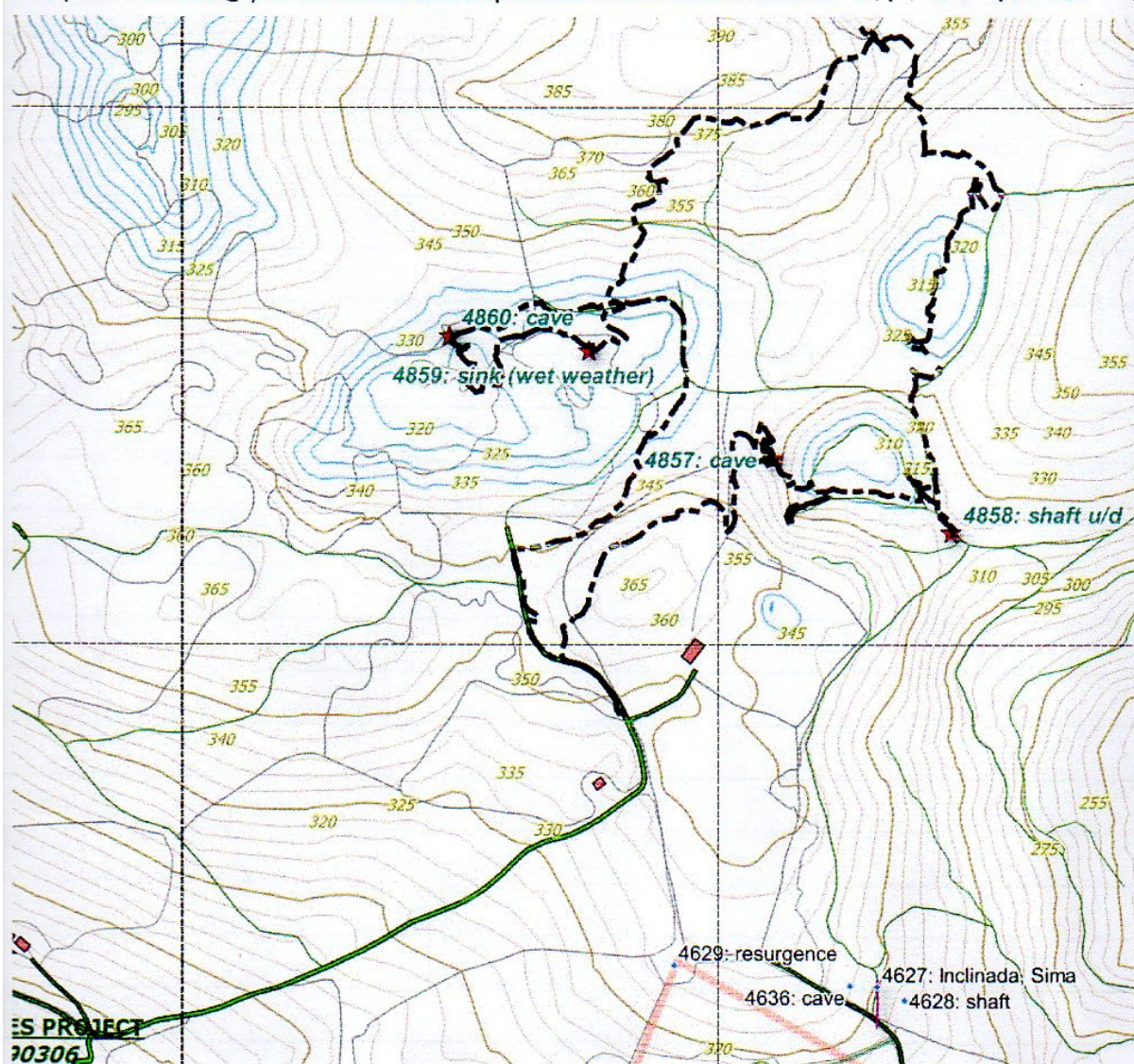
Friday April 5<sup>th</sup> 2019 Juan and James out to investigate some of the new area – let's hope the permit arrives!  
Investigated the southwest of Hazas – a rough track allowed us to drive up to a barn, house and meadow close to depressions and about 200m north of site 4629 – see map.

Walked along track continuation, then through gate and across fenced meadow into the jungle at the first major depression. Plenty of forestry and animal tracks in the jungle makes prospecting not completely impossible. On the east side of the depression we came across a large cave opening (**new site 4857 @ 30T 0450051,4804172**) and slope down into a 20m x 15m chamber about 10m high with no apparent ways off. *Cueva de los Mores*

Skirted the depression and found a heavily vegetated small depression next the track – **new site 4858 @ 30T 0450218,4804103** - not descended.

Headed north for lunch and then investigated the second, large, marked depression. Nothing found here but a climb up to the northwest gained a high spot with good all-round views with El Rincón and the Solórzano housing estate both visible.

Headed back on the west side of the forest investigating a line of deep depressions, one of which is a dig in a wet weather sink – **new site 4859 @ 0449880,4804273**. To the west of these – ~~probably~~ out of the new area – found a cave (**new site 4860 @** ) on the hillside that sloped down to a choked chamber. 0449750 4804287 ↑324



After a refreshment stop in Solórzano, drove to the west end of the Riolastras depression where **site 4095** was eventually found in more jungle. James bashed his way down (with ladder) until a small entrance was reached. Explored for about 10m in a small streamway until a dig in the floor stopped progress. Still going but needs more work.



From: john southworth <direct.station.limited@hotmail.co.uk>  
To: juan corrin <uzueka@aol.com>  
Subject: Garzon shaft ?  
Date: Sat, Apr 6, 2019 2:43 pm  
Attachments: Garzon shaft.jpg (897K)

4861

Hi Juan.

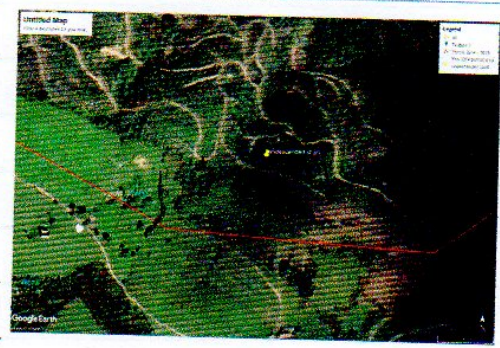
(previously noted) new site ~~4861~~ 4865

The coordinates for the site are 0450502 4803550 , its about 130m NNE of site 4625 .  
The Cantabrian map site shows the Arroyo de Valladares source ( 310m NE of shaft ) coming out of the base of the hill with a track ending very near to it . ?????.

Cheers  
John.

Virus-free. [www.avast.com](http://www.avast.com)

1Attached Images



**Sunday April 7<sup>th</sup> 2019** Juan and Phil braved the jungles of El Rincón. Drove to the last turning left off the main road to skirt the north side of the village. Parking just off track and a short walk gave access to the network of forestry tracks that rise up into the eucalyptus wood. The aim was to get to the top of the hill to investigate the depression just east of Monte Llusa. However, after a number of attempts to follow animal tracks up from the highest forestry tracks, we had to give up. Every attempt to gain height met with a wall of jungle – sarsaparilla, brambles, gorse, etc.

A number of new holes were documented mainly next to the main tracks. Full investigation will require an oversuit just to conquer the vegetation.

**Site 4862** @ 30T 0450834,4805459. Water in wet weather has been diverted from the track by a low wall into a depression that was not investigated.  $\uparrow$  120

**Site 4863** @ 30T 0450405,4805198. Open shaft just up from track. Sounds dead at base; possibly more than 5m deep.  $\uparrow$  260

**Site 4864** @ 30T 0450334,4805272. Open shaft at side of rising track. Roomy 1m wide rift drops about 6m. Undescended.  $\uparrow$  269

**Site 4865** @ 30T 0450368,4805256. A large, vegetation-filled depression with a limestone wall visible at the back. Not investigated.  $\uparrow$  258

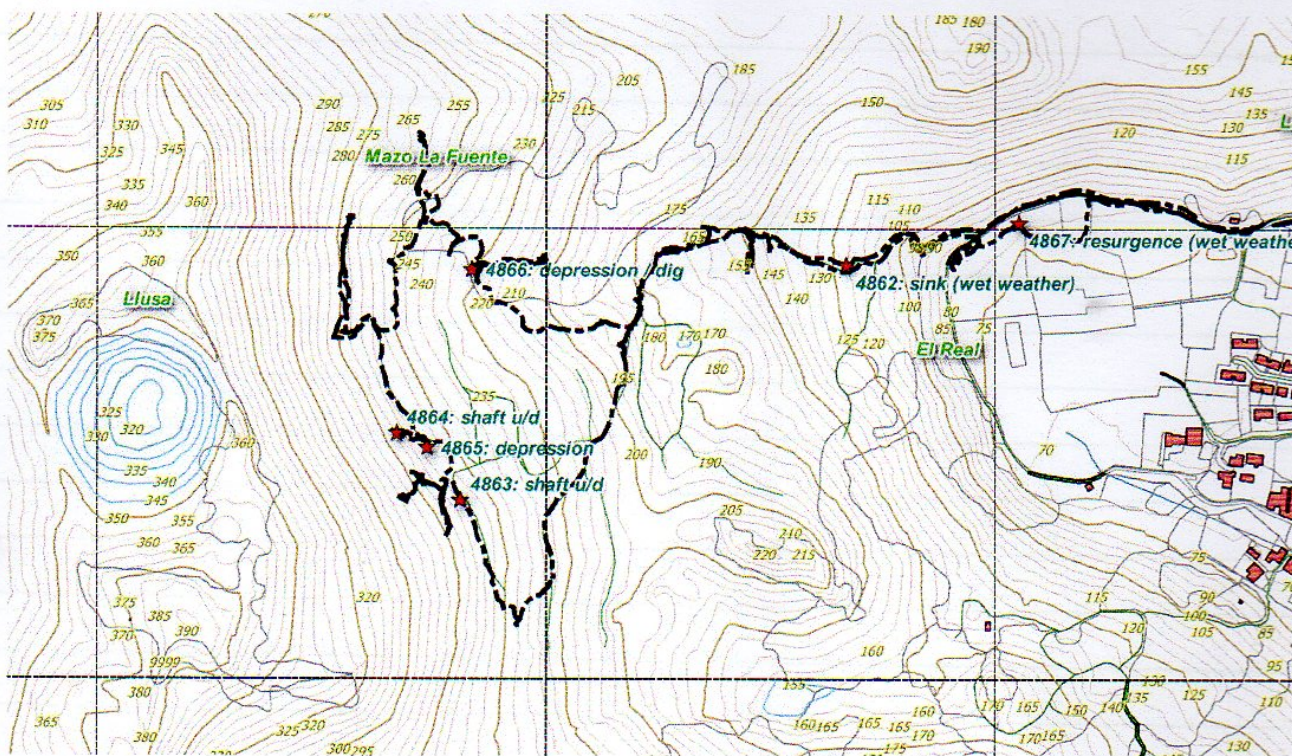
**Site 4866** @ 30T 0450417,4805454. A large depression below a track. The GPS and entry point are at the lower edge. From the base of the depression, a climb up to the right (above the deepest point) gains a 4m drop, possibly draughting. It may dig at the base of the drop. Above the track is another depression that appears choked.  $\uparrow$  227

**Site 4867** @ 30T 0451027 4805506. A wet weather resurgence with a built up wall to stop the field being flooded. The only enterable hole narrows in and seems to choke after about 8m at the end of a small, sloping bedding.  $\uparrow$  81

MAP  $\rightarrow$

SPC





Looked from the road for any other tracks up Monte Llusa. Drove around to Villanueva then to Garzón. A track from Garzón may approach Monte Llusa from the southwest but has yet to be investigated.

See next day →

9/4/19

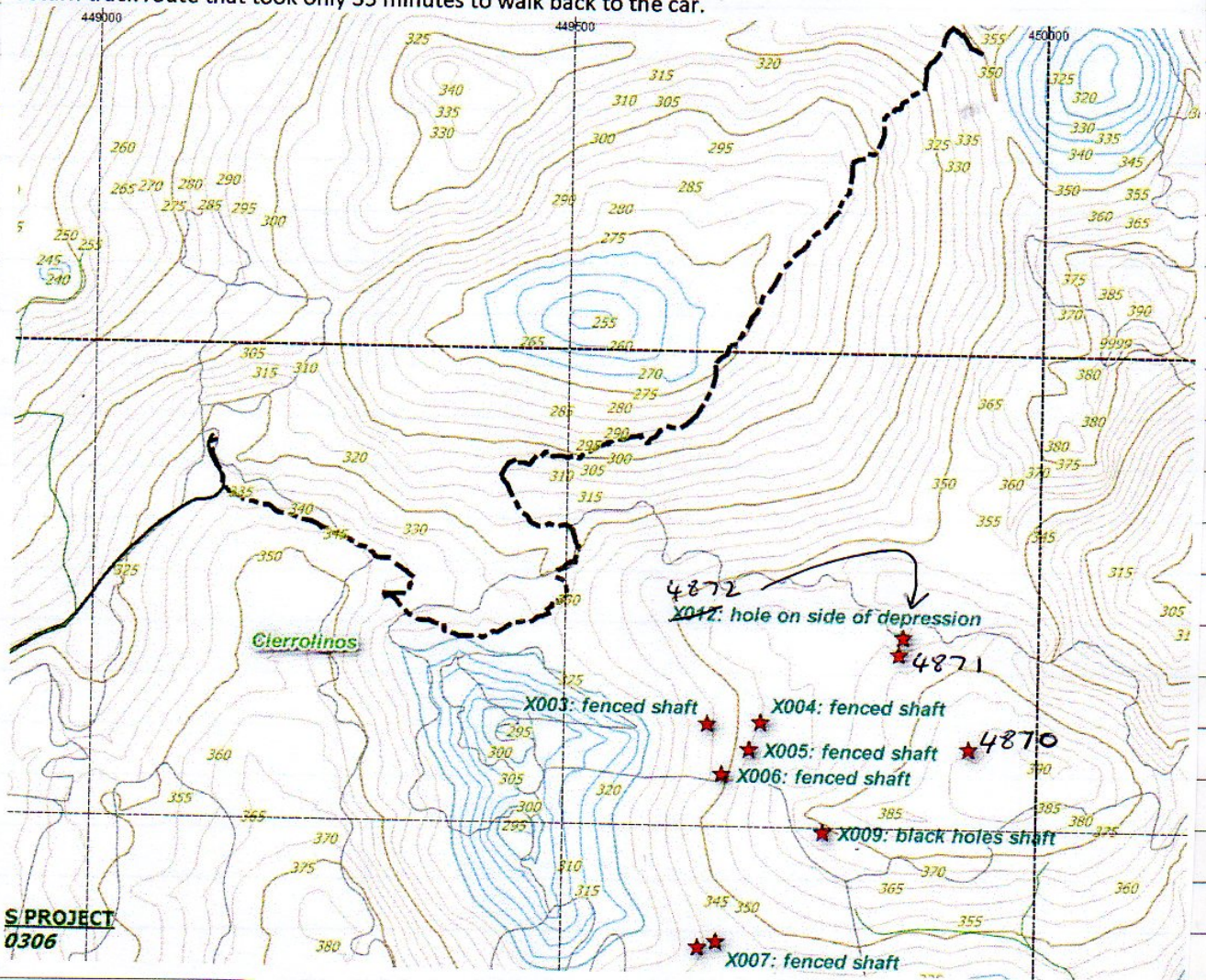
X010 → 4870 as they are in the Hazas area  
 X011 → 4871  
 X012 → 4872

4868 El Rincon	451416	4805559 ?	109m	✓
4869 Barrera la Real	451314	4805553 ?	095m	✓
4004 Las Palomas	454332	4804202	179m	✓



See note below re X010 → X012

Monday April 8<sup>th</sup> 2019 Juan and Phil searched for a route to Monte Llusa from the west above Garzón. Parked at the end of the good track and followed an orange-dotted path along the side of the Cierrolinos depression. Many fenced shafts were spotted – out of the current area. These were given X codes X003 – X012 and were all on good track that took us up the side of the Llusa depression, just below the peak. The black route on the map shows the return track route that took only 35 minutes to walk back to the car.



S/PROJECT  
0306

X003 ACT 344 all undeclared / checked in detail

X004 355

X005 355

X006 348

X007 342

X008 338

X009 373

X0010 383

X0011 366

X0012 361

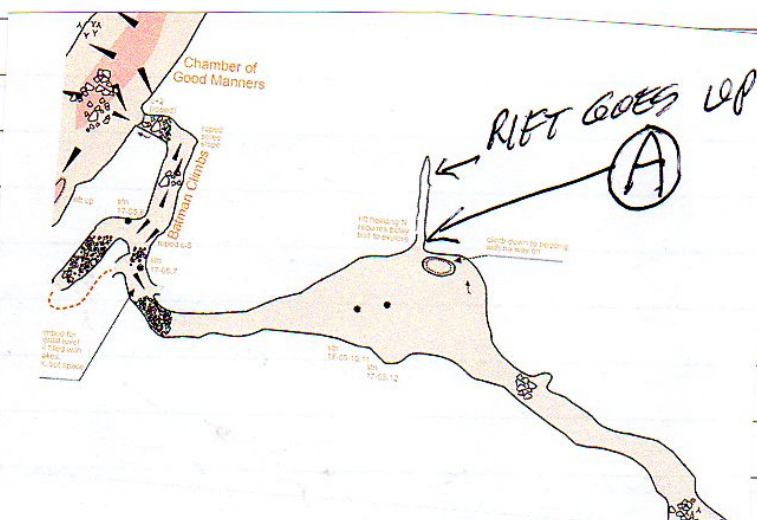
shaft next to pond  
fenced shaft  
2m deep hole on side  
of depression  
Now in Hazas area



9/4/19 B1 3234 Torben + Peter dropped shaft - to 5m  
from Riano. see report on page 5 back ↓

9/4: 3234 Torben Redder + Peter Fast

Went to the chamber just East of Batman Clings to check the small clings to the North (A) Closed in after <10m. Then got to the undecended shaft SE off B-Chamber. (P20) The shaft opened into a big rift, with a B dept of 23m - with a shelf and a chamber halfway down. From the bottom, a passage went further down some slopes, ending in a blind meander - right at the level of the lower Riano cave. Still a number of possible leads left. ---



Survey 3234-19-01  
76m  
(76.36 m length)

Total length = 7035m  
length of 4VS = 59367m



Wednesday April 10<sup>th</sup> 2019 Juan and Penny back to the area first investigated on the 8<sup>th</sup>. Added some more X numbers and 3 other small sites in the Hazas area.

X010 is a deep shakehole with a possible shaft at the base @ 30T 0449594;4804569 alt. 328m

X011 is a fenced shaft @ 30T 0449666,4804485 alt. 353m

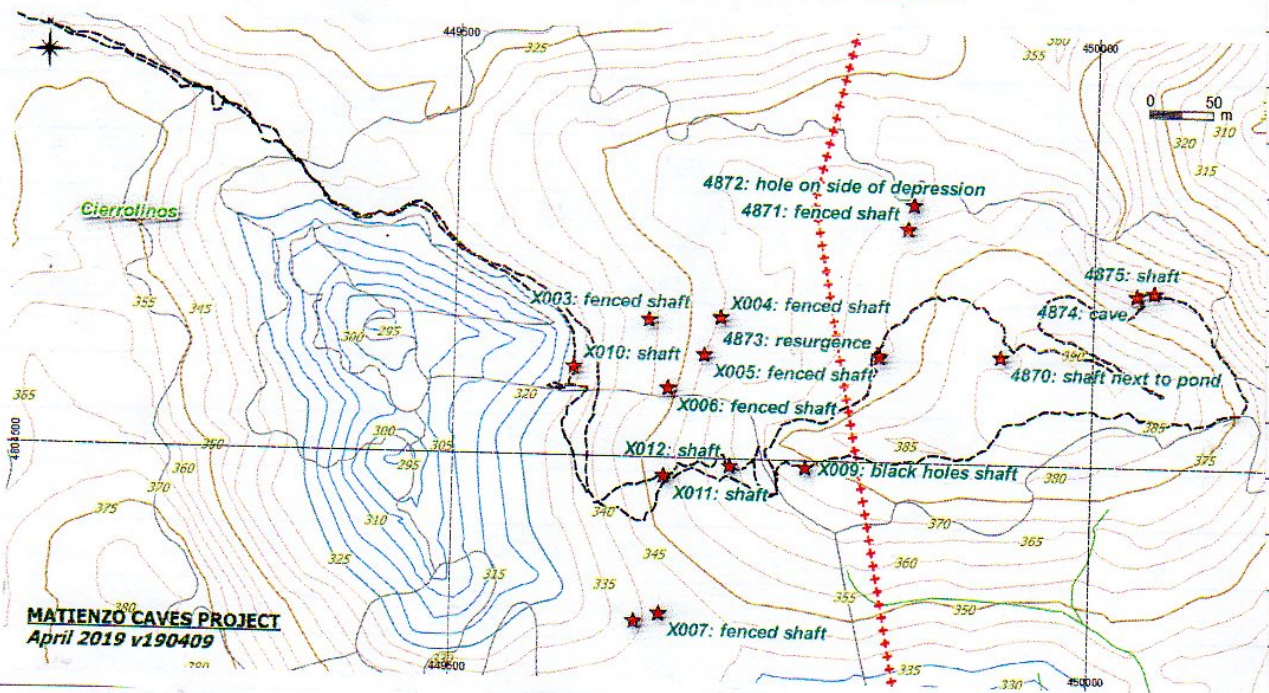
X012 is a small shaft with many small trees over the entrance @ 30T 449717,4804494 alt. 364m

The above are out of the current permit area.

4873 is a seeping resurgence that feeds muddy pools for animal drinking @ 30T 449833,4804582 alt. 370m

4874 is a small cave with a possible short drop under a boulder @ 30T 450033,4804634 alt. 367m

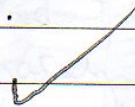
4875 is a fenced shaft about 3m deep? on the slope @ 30T 450047,4804637 alt. 365m



Thursday 10<sup>th</sup> April. Pete + Juan to Lluera to see technique used to document rock art sites - Cultwa-sponsored work.

3D laser scanning and photography for photogrammetry were carried out along with photography + recording of red marks on the walls and base of entrance boulders.

0658-Cueva Túnel was the cave being blitzed. We also went with Emilio to look for any similar marks in cave 2100 nearby. None found. Photos of both sites.





Sunday 6<sup>th</sup> <sup>3961</sup> Cueva de Nivolar, Solotzaro. Jenny, James, Penny, Eleanor, (little) Juan.

Went for a tourist trap here. Entrance full of goat droppings. Juan went in for about 50m but didn't like it, so went out with Penny & Jenny. James & Nora continued to the end of the ~~lower~~ main passage before retreating. ✓

Sunday 6<sup>th</sup>: James C. Went for walk above E side of Solotzaro to look for caves - found 1 entrance (4877) but forgot ~~there~~ my light so couldn't look properly. Shaft down near top of hill beneath limestone cliff. Stones all of down slope for several seconds.

Thursday 11<sup>th</sup>: James, Jenny, Nora, Juan (little).

Returned to area near site 4877 to look for more caves. in interesting El Tesugo valley. Top area very ~~are~~ muddy due to recent Eudaphnus deforestation. Found resurgence cave behind a water tank used by the farmer. Walk in entrance (4878) down to stepping height to man-made dam. Chamber behind appears choked.

Walked down into main stream valley and found entrance with lot of water coming out (4879). This may or may not be a cave. Could be the original overbed covered by deforestation debris.

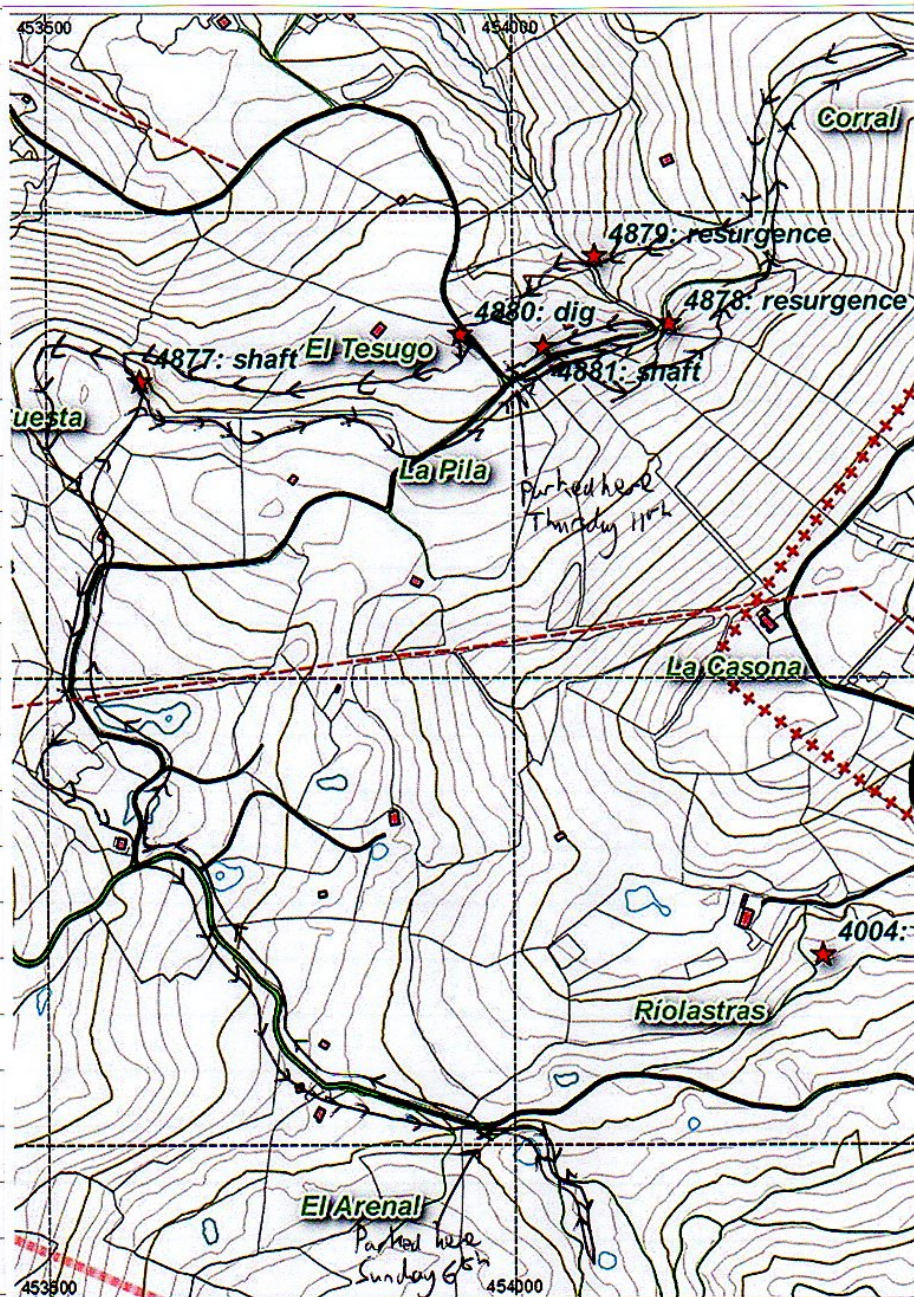
Next, went back to 4877. On the way found a big snakehole with a fridge freezer at the bottom of a limestone cliff. This had a hole with black space below that will need digging. 4880.

Back at 4877, dropped some stones down and they are rolled down soil for quite a while. Needs a ladder. ✓



(9)

Finally, noticed an unweired hole revealed by deforestation. At back of Mrs was a hole into a rift down which stones fall for several metres. 4881. ✓



11/4/19 Cave to be explored by Richard Bendall in La Gacuma wood. Site 4876. ✓



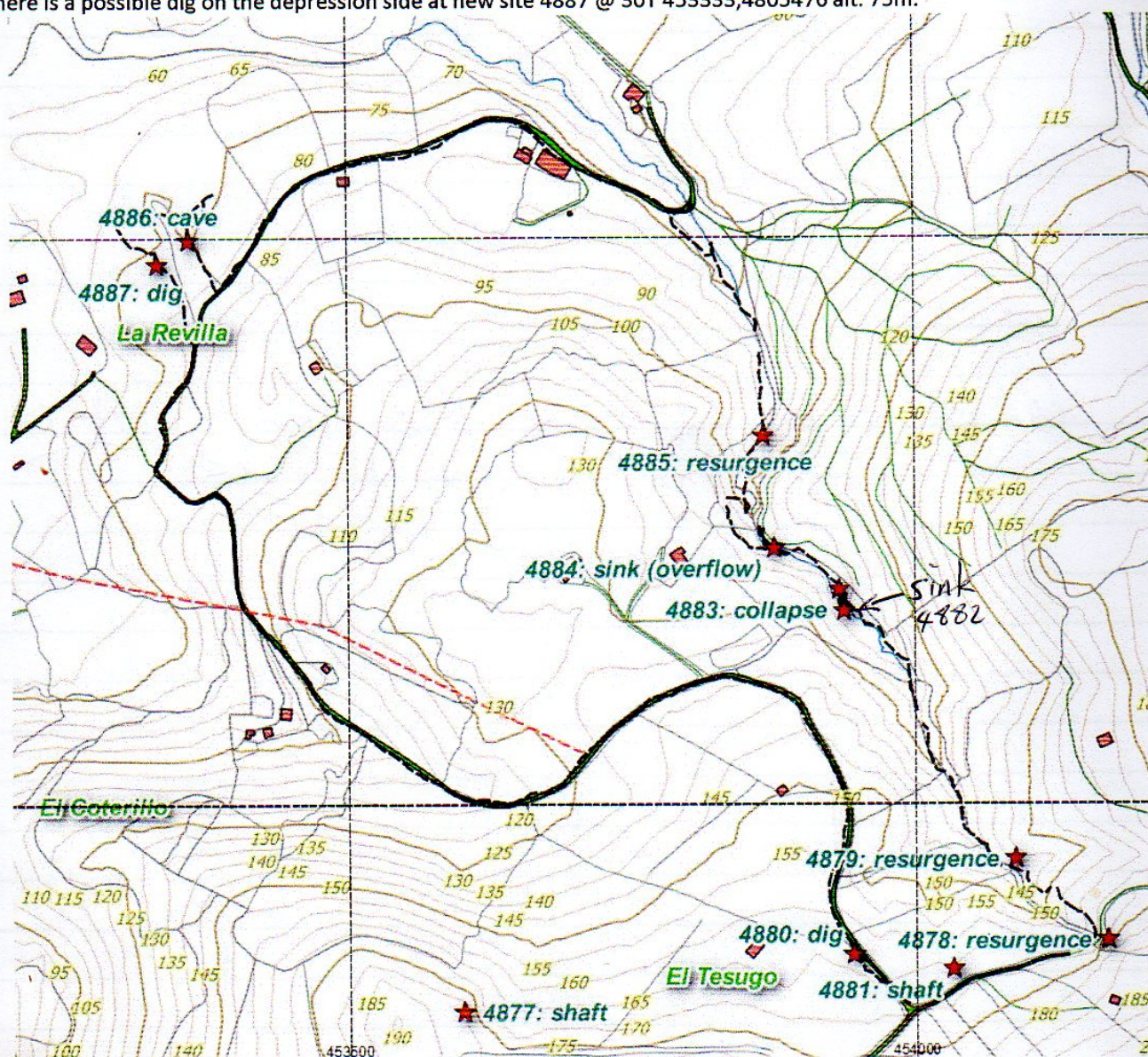
Friday April 12<sup>th</sup> 2019

Phil, Juan and James back to the area of the Arroyo de Tesugo that Jenny, James and children visited yesterday. Started at **site 4877** – see James' description of the exploration. Moved on to **shaft 4881** – see James' description. Phil and Juan into the **resurgence 4878** where Phil dug through into the choked chamber that James had seen yesterday.

We then worked our way down the Tesugo valley, following the stream bed. The stream disappeared in an impenetrable hole covered by a large log (**new site 4882** @ 30T 453938,4805169 alt. 111m). Just beyond, Phil dropped down a hole at the base of a collapse to a large boulder dig, **new site 4883** @ 30T 453933,4805189 alt. 109m). A small hole seen at 30T 453876,4805226 alt. 105m was presumed to be an overflow sink, **new site 4884**.

The impenetrable resurgence (**new site 4885**) was beyond a limestone amphitheatre (which had nothing of interest) at 30T 453867,4805324 alt. 87m. Straight line distance between sink and resurgence is only about 200m with altitude difference of 24m.

When the valley met the road we followed the road back up to the vehicles, investigating various depressions at La Revilla on the way. **New site 4886** is a tiny cave undercutting a thick sandstone roof @ 453361,4805497 alt. 75m and there is a possible dig on the depression side at new site 4887 @ 30T 453333,4805476 alt. 75m.





12<sup>th</sup> April, James C, Juan C (Big), Phil P.

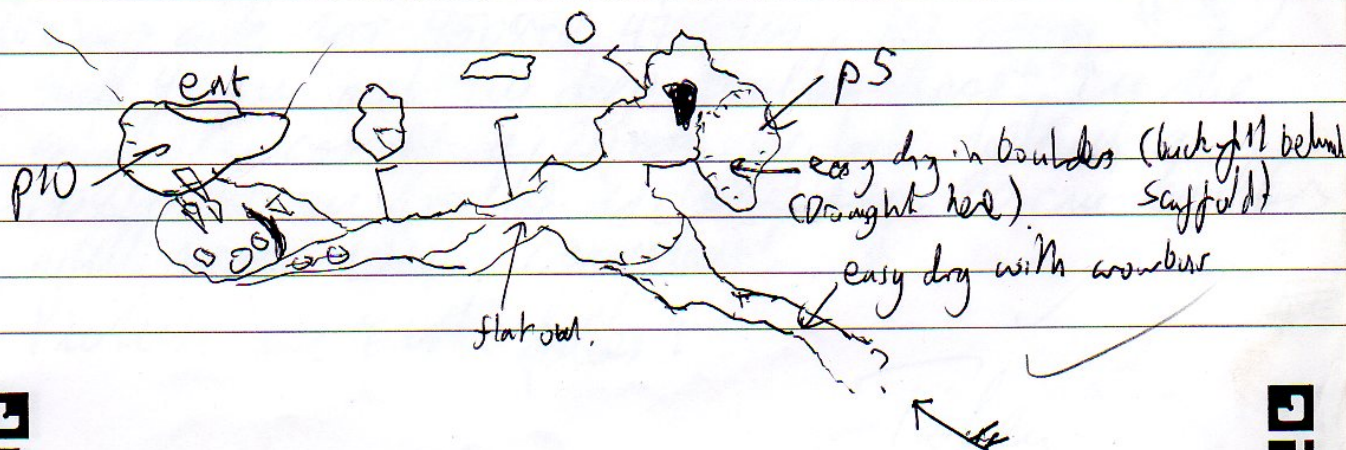
3% Pot

11

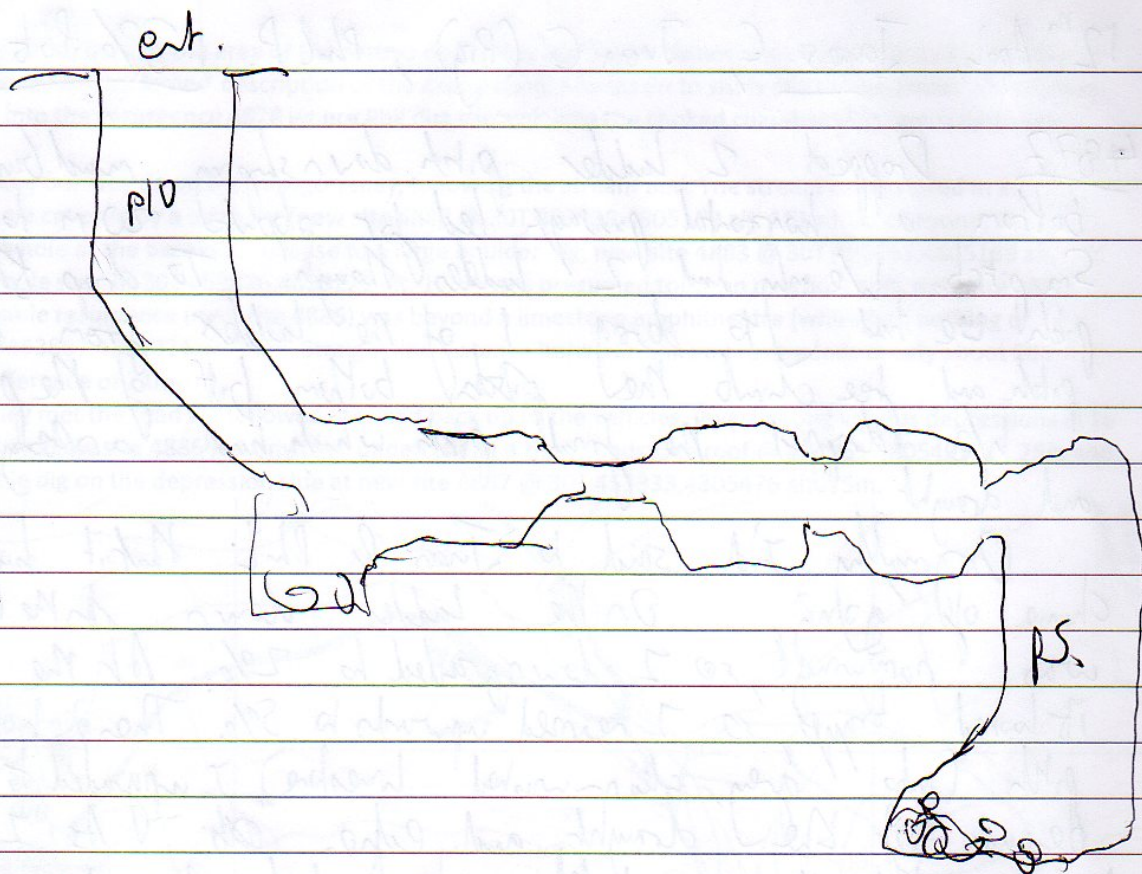
4877 Dropped 2 ladder pitch down shoring mud bank. At the bottom a horizontal passage led for about 20 m to a further Sm pitch. We only had 2 ladders though. To drop the Sm pitch we had to drag 1 of the ladders from the entrance pitch and free climb the ~~pitch~~ bottom bit of the pitch. We dropped the final pitch which had a ~~very~~ echo and drought.

Originally I'd said to Juan & Phil that it had a 3% chance of going. On the ladder down to the bottom was ~~nothing~~, so I downgraded to 2%. At the bottom it looked bigger so I revised upwards to 5%. Then, at the Sm pitch (into grey, clean-washed limestone), I upgraded to 6% because of the drought and echo etc. As I should have expected, this immediately ~~led~~ led to it crapping out in a hard pit. However, at a hole in the floor in boulders. Would be easy to dig (perhaps by back-filling), and had a reasonable drought.

Back at the top of the pitch was a tight pneumatic passage in brown sandy limestone that I poked for a few metres. It needs a bar to dig out the floor. Should it get bigger again so would be worth a dig because easy to dig or get through to the enlargement. There was a slight drought here.

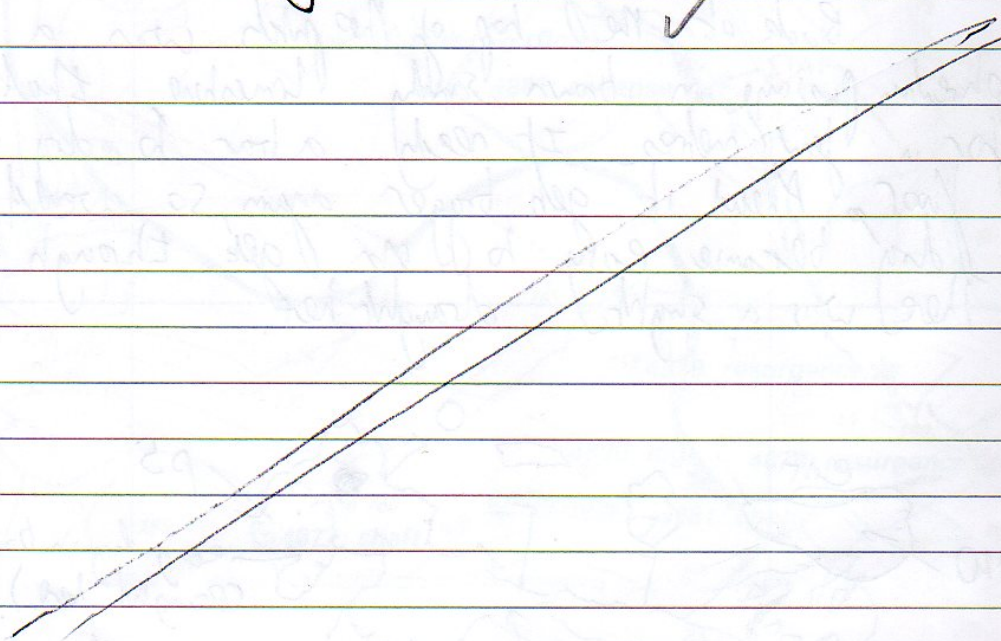






4881. R. ft about 3-5 m deep and choked with  
soil and clay. No drainage.

19/11

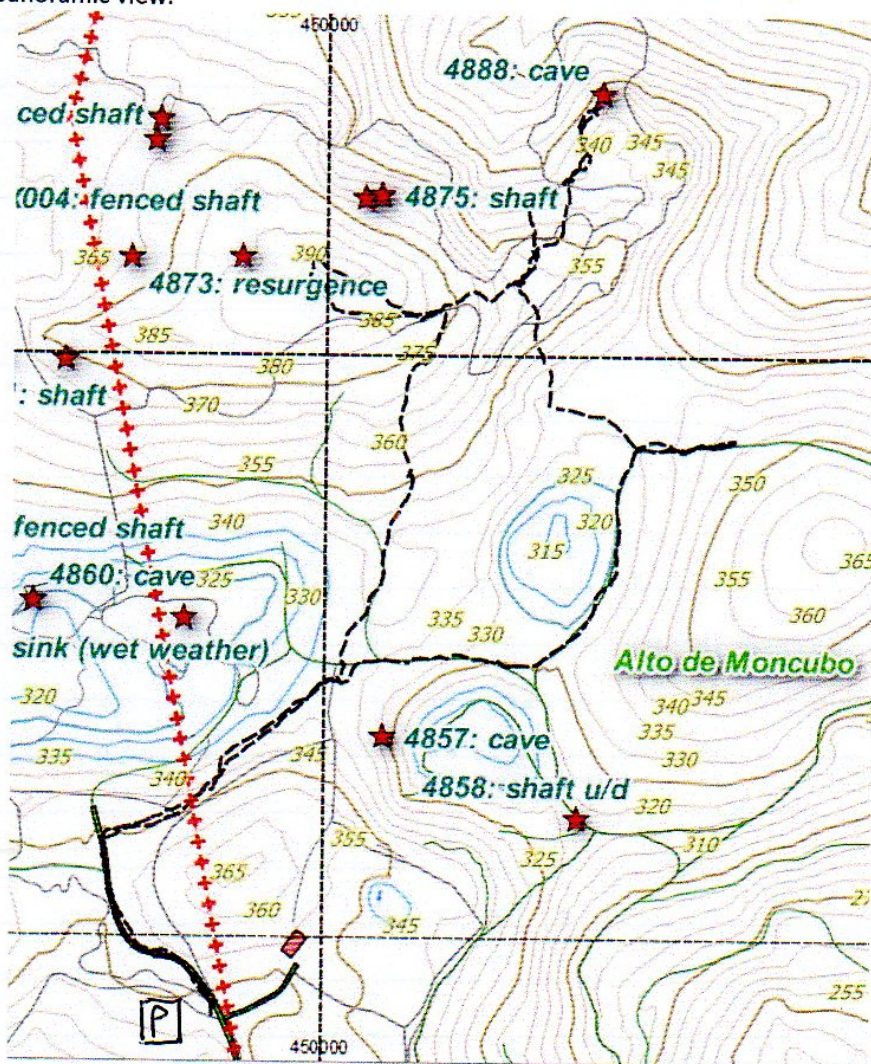




Saturday April 13<sup>th</sup> 2019 Juan and Penny up into the new area south of Monte Llusa, taking the right fork on the track to park up where James and Juan were on Friday, 5th. Took the long east route to get close to the pond shaft but returned a much shorter and less strenuous route.

Juan followed animal tracks down to investigate a black hole which turned out to be an 3m deep undercut. A shallower undercut is found around the corner to the north and the cliff face continues into the wood / jungle and may be worth following. **New site 4888 @ 30T 450236 4804725 altitude 330m.**

Sent drone out from the peak near the pond site 4870 to fly to the Monte Llusa depression and take a 360° panoramic view.



13 APRIL 2019 TARTAN, PETER, LOUISE, WARE, MARIE (4889)  
 4889 New site 30T 450894 4799405 ALT 280m  
 shaft 4x6m and 4m deep. Boulder floor. In the  
 grassy corner, a 20cm well behind a  
 60x60x60 cm boulder is dropping. 30 cm boulders  
 will move with crowbar.  
 Picture in Easter folder:

Taken

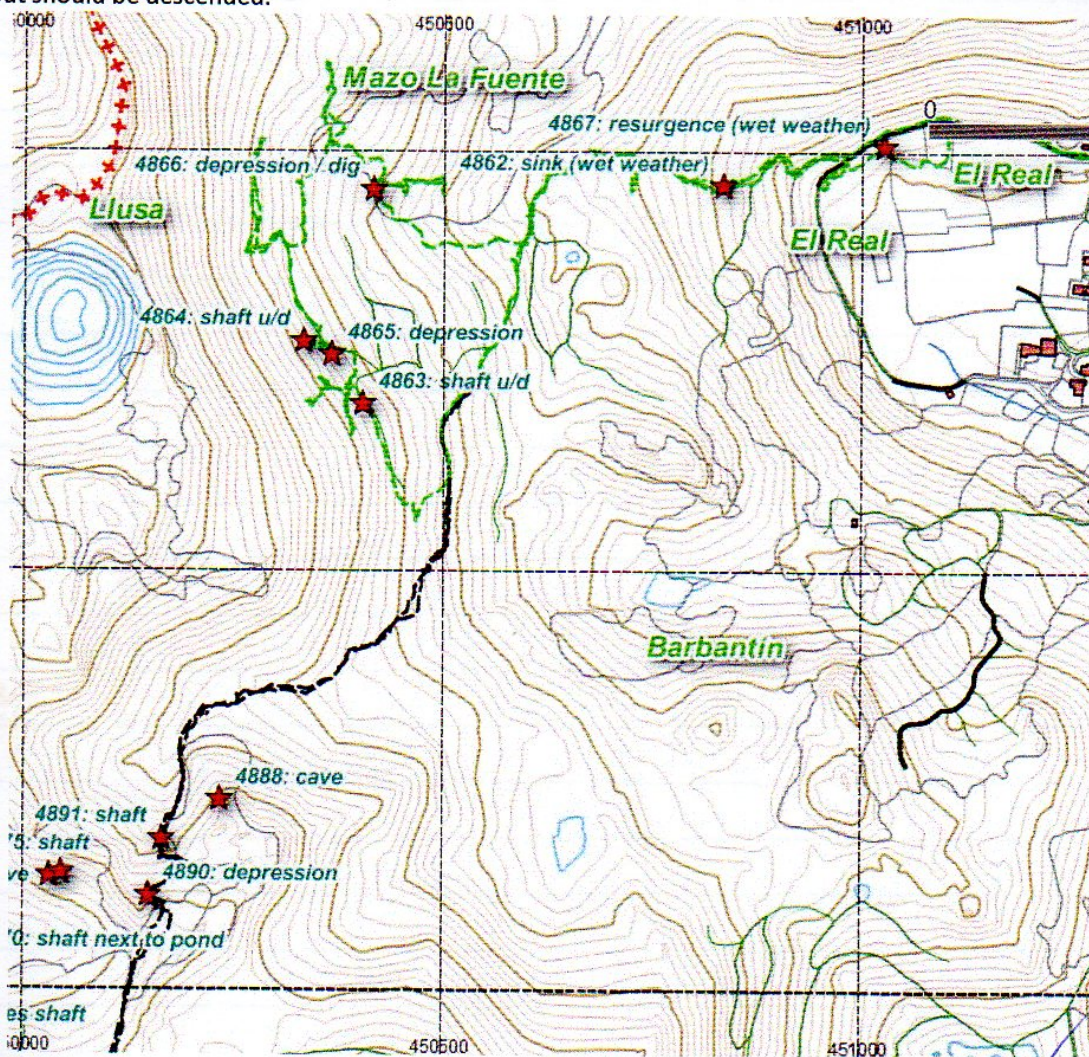


**Sunday April 14<sup>th</sup> 2019** Juan and Penny up to the Monte Llusa area (on the right hand track) where the drone video yesterday showed a track descending into the forest towards El Rincón, about 1.3km away and 300m lower. A distinct (mule?) track was followed down past new sites 4890 and 4891 into the forest, where a pleasant, managed route (marked with red posts) descended, mostly gently, to meet a logging track where Phil and Juan had been the week before (in green).

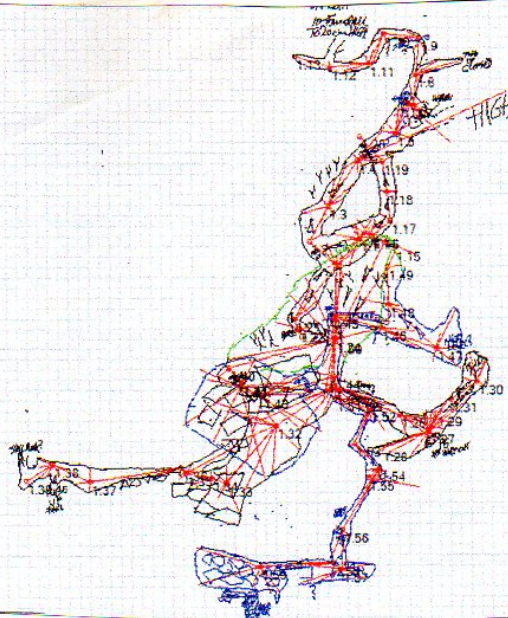
There are a number of possible depressions / valleys on both sides of the jungle track that could do with further investigation using machete / boiler suit, etc.

**New site 4890 @ 30T 0450150 4804611**, altitude 345m is a large depression at the side of the route down before it meets the jungle. A tall cliff at the back has a small number of apparent solution pockets.

**New site 4891 @ 30T 0450166 4804678** altitude 320m is a 3m deep drop marked with red posts that looks choked but should be descended.







11-12 april 2019, #3234, Peter Fast, Torben Redder

We went in prepared for an overnight trip, with stove and freeze dried food.

Campsite was just north of B Chamber at stn 17-05.64, in where it is possible to sleep nice on sand.

Starting of the p24 just east of New Hope. Rigging: 10m rope for traverseline from natural to Y-hang. From Y-hang 24m rope. There is a bit of water spray in the shaft, very fast responsive to the weather. The rim of the shaft is a bit fragile with boulders not to touch.

At the bottom of p24 a tube goes north and slopes down to a 2m climb down to a stream. Going south at the bottom of p24, and then turn right and crawl down in a sloping passage that leads to a stream. Follow stream and climb down in two places. The passage gets into hands and knees. Just before the end of the main passage to the right, a low, wet and muddy crawl winds towards north for about 10-15m. Too small to turn around once heading out. At the end the height is about 20 cm with a trench in the roof for about 2m, but the it got bigger again. Good draught. Water drips could be heard with an ecco from the other side. It must be Riano. Got quite muddy, but could do washing just upstream.

At the bottom of p24, heading up the rift, a climb up between boulders (past a mouse skeleton) leads to a well decorated chamber, Mouse Chamber. Mouse chamber can also be reached directly from the p24.

Mouse Chamber, North eastern end: Climb up slope over boulder into well decorated passage, Column Corridor. Follow Column Corridor to a 2x2 m window overlooking the higher level above the south western end of Mouse Chamber. Column Corridor was first entered from there by climbing the vertical c4 (time wasted).

Further along Column Corridor a nice walking size meander heads south to First Boulder Chamber and Second Boulder Chamber. In Second Boulder Chamber it is possible to climb down in the floor.

Mouse Chamber, South eastern end:

- 1) A crawl east leads to p5 (unpleasant tight pitch head) leading to 2x2m chamber with no way on.
- 2) A walking size passage south leads to a crawl along solid wall with boulders to the left. At the end there is stall constrictions, that will dig with big hammer/chisel/crowbar.

Mouse Chamber, South Western end: Climb up 4 meters between boulders to reach top of choke. From there the window into Column Corridor is seen.

Surveyed: 283 m (TOTAL INCLUDING 9 APRIL)

14 april 2019, #3234, Peter Fast, Torben Redder, Marie, Karen, Louise  
Family trip to just before Ali Chamber.

14 april 2019, #3234, Peter Fast, Torben Redder

Continuation of the explorations from 12 april. Various rifts and holes checked and surveyed.

SURVEYED: 309 m (TOTAL INCLUDING 9+11-12 APRIL)



15/4/19

4474 = "Now't but Obstacles"

15/4/19

Notes from

Richard Bendall

will duplicate (some)

info in CC/PR/NE/RS

log book sheets.

Photos on computer.

4898

N 303m

4899

N 298m

4900

N 311m

4901

N 332m

4902

N 331m

4903

N 336m

4904

N 294m

4905

N 297m

4906

N 337m

N 306m

Waypoint

Pic

005 0450049  
4798655

cliff Pit 3m deep  
In plantation below cliff.

006 0450055  
4798666

0497 Cliff with trench  
0498 probably water  
In Plantation supply

007 0450057  
4798634

0500 shaft 3m deep  
Above Plantation choked

008 0450060  
4798603

0501 Fenced off 3m  
Above Plantation shaft choked

009 0450089  
4798629

0502 Fenced off 3m  
Above Plantation shaft choked

010 0450110  
4798634

0503 3m fenced shaft  
Above Plantation choked

011 0450091  
4798701

0504 Small opening  
In plantation below cliff

012 0450150  
4798738

0505 Cold store. Top of  
0506 Field. Dug for 6m  
Low ahead. Coloured  
rift up to right. Rising.

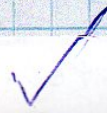
013 0449987  
4798566

0507 4m rift 6m long.  
Above plantation. Straws in roof.  
choked.

4876 0450032  
4798634

Better location

0490 Hole below cliff  
Easy climb in, crawl  
to left to 3m deep Pit  
2x skeletons, sharp teeth.  
Over pit to daylight +  
Second entrance. Noway on





### Cueva Vallina ( all Rupert Skorupka solo )

**Sun. 31st March** Carried in a heavy bag of dive gear to the top of the D.Dutch pitch. All tackle that was left in place from October was still okay.

**Tues 2nd April** Carried in another bag, dropped the D.Dutch, changed into wetsuit and went down to the Downstream sumps, where gear was deposited. Conditions excellent, all mud that was in the streamways last October has been washed away.

**Thurs 4th April** After heavy rain and snow, carried in a bag of climbing gear, as it was unlikely I would be diving for a while. Left this at base of D.Dutch pitch, a new site for a climbing project. Checked out the streamway - it was well up and murky.

**Fri 5th April** Carried in the drill and began climbing up from the base of the D.D. pitch, at the opposite side to the normal route down. This went up a series of short vertical walls and muddy slopes to where it continues as a large passage which is hidden behind a rock rib. Put in 19 thru bolts and got up about 20 metres before rope drag became an issue, so went down re-rigging on the way.

**Sat 6th April** Carried in more thru bolts, hangers, etc. Left these at base of D.D. before changing into wetsuit, and carrying a bag with 3 regs and other dive gear to the Downstream sump. The water was still well up and vis poor, but this gear was to be left here for future use this year, so it needed to be brought down regardless. It pissed it down on the way down to the car.

**Sun 7th April** Continued with my climb, trailed a 55m static rope to rig it with. The route became very muddy and the bolts therefore dubious. 3 more allowed a further sloping ledge to be gained, but I still couldn't see around the rock rib to see if it continued. So, I had to put 3 or 4 more anchors in up a horrible slimy wall until I could see that the route was blind - it just petered out into solution pockets.

I then rigged the static rope to allow a descent and recovery of the now filthy climbing rope. On the way down, I had a good look and could see that the main aven continued up to 35 or 40 metres high, and a possible inlet passage. I decided this might just be reachable from the top of the pitch by traversing across, to save the trouble of bolting up.

**Tues 9th April** Pulled all the climbing kit up the pitch, and set off bolting from right at the top anchors. A really obvious passage goes off from here to a promising looking chamber which is right over the main shaft. About 8 bolts allowed the chamber to be reached - it has a sloping muddy floor dropping down to the 40 m D.Dutch pitch. On the opposite wall was a small passage. It didn't look great but could well soon enlarge. I put in a Y-hang and dropped down the mud slope, but couldn't reach it without a desperate scramble up a slimy mud slope.

At this point I realised I had about half an hour to get out of the cave before my callout time, as I had been faffing about for hours. So, I packed up the drill and brought out most of the climbing kit, but had to leave the climbing rope rigged.

If the passage doesn't go, it will be worth dropping the pitch from this end, as I am sure something else comes in not far from the top.



4889.

PICS 160 FOLDER

15 April 2019 (6) Torben, Marie, Karen, Louise and Peter

We moved a few boulders, progressed for about 1 meter. More digging required in soil and small boulders. Bring shovel and crowbar. Good draughting "boulder choke". Road is only 20 meters from 4889 - very easy access! ☺

15 April 2019 : Fresno, 0841. James C, Chris S, Alex R.

Went to end of Fresno to look at open leads.

Rugged <sup>and</sup> up pitch after find up pitch a bit better on way into Honeyman Pass.

Sneaky down climb collapsed, so had to rig a pitch here too, in torrential drops! Wet! (Just before Trouble & Strife)

In the Extramural Inlet copped out immediately. Alex climbed up cable but couldn't reach the top. When some water comes in here, but no draught. It would need bolting of enough <sup>rope</sup> could be found. Not great prospect! Fig 1

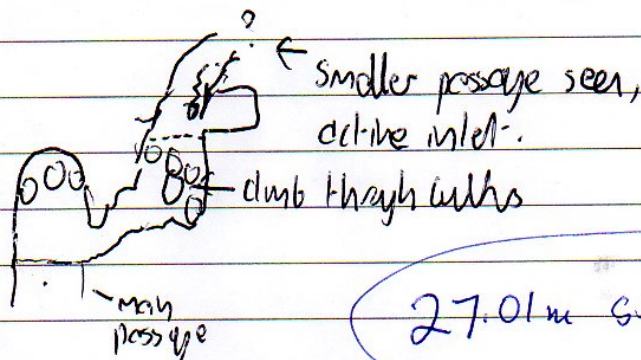
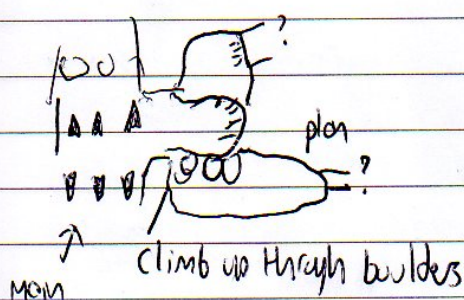
Moley Matrimony descended down easy climb. Stream degrades to a crawl in water until 7m pitch reached. This splits into 2 halfway down both ways becoming narrow. Could be forced through but seems immature. Also duck here, but tight beyond. Not great prospect!

Chris took a lot of nice photos, which was nice.

Best lead by far is now A bolting up A Pit On The Side. Big trip though, so need to regenerate our enthusiasm levels first!



Fig 1. Extracritol



27.01m surveyed

2019-04-16

Cave Ferret & Amata Hinkle - Entomology

3731 & 0866 288 (Lenny, Bodega, la Cueva)

Pulled pitfall traps in Lenny & la Cueva (leintall) left last Easter exped.

Photos in Lenny's and Bodega.

Shasman

16-4-19. Peter S, Carmen, Chris S (not saife).

Valhalla

Poke around dangerous chamber with a p view to photographing the wind blown stal & poking around some of the unexplored ? passages.

Some more work needed in checking accuracy of survey because a few things didn't add up, however a new parallel passage of unmeasurable dimensions was passed leading possibly to where we needed to be but didn't add up on survey.

On ~~two~~ passages around swirl chamber + zona blanca to try to make sense of catalans ("link to zona blanca")

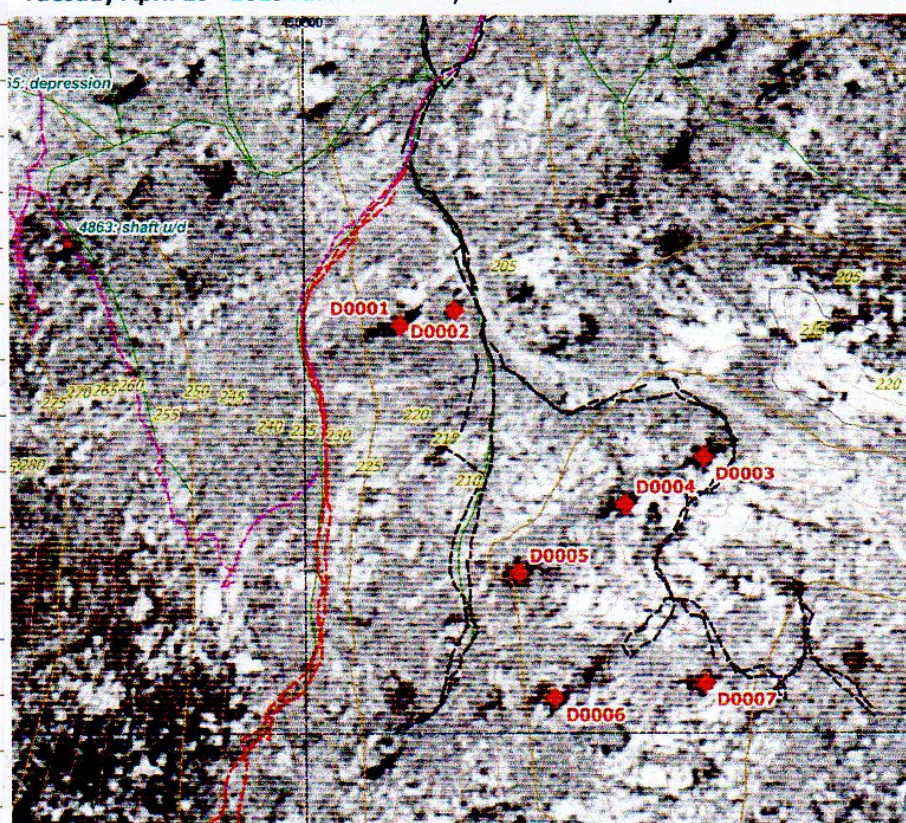
It would appear the survey does make sense (Ali 15-8-04) (Birdsworld) (MARICERS)

or various numbers helped

Need to cross check old log books.



Tuesday April 16<sup>th</sup> 2019 Juan and Penny to El Rincón and up the track on the N side. Aim was to see if the black

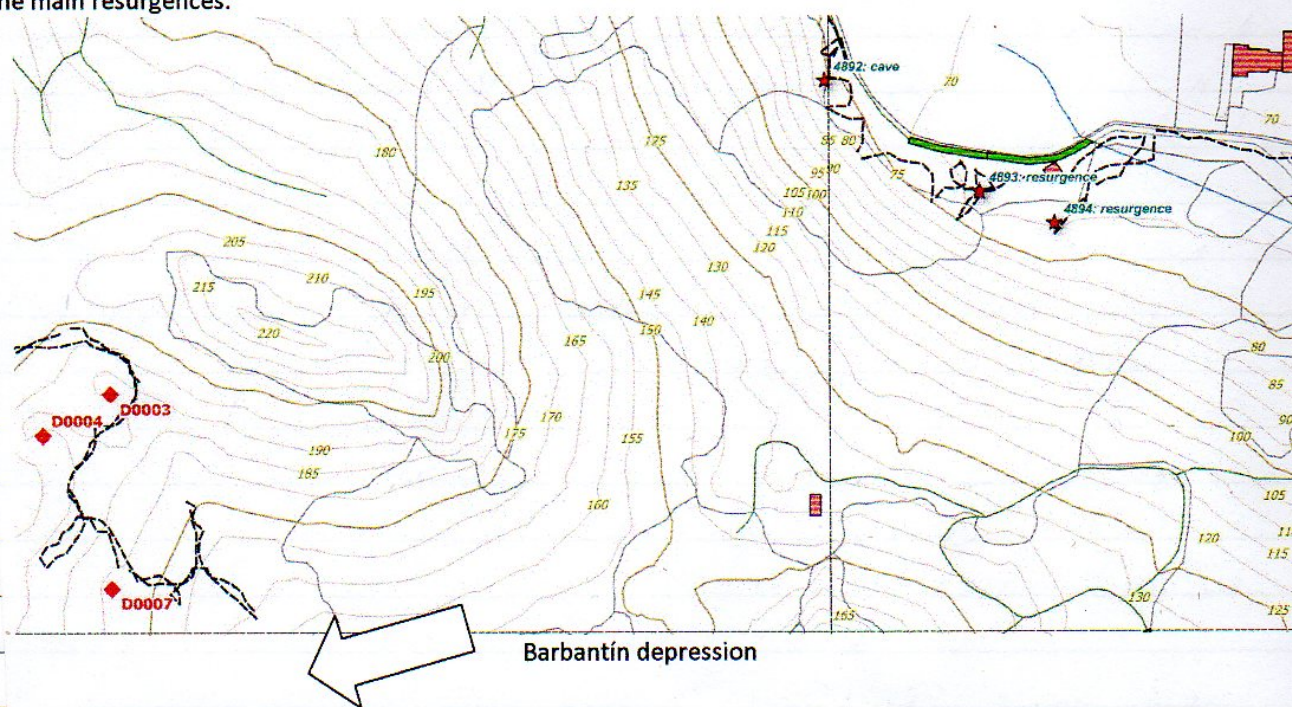


marks on the 1956 black and white aerial photos (now in QGIS) were depressions or just trees. (Features to look at were marked on the photos in QGIS then imported into OruxMaps.) It turned out that all the features marked are significant depressions but are now heavily vegetated. A hedge trimmer would definitely be an advantage and probably a necessity.

After this check of features D0001 – D0007, Juan went down into the Barbantín depression to have a quick look. This, again, needs a properly suited and equipped team to investigate. The paths / tracks are quite easily distinguished on the ground but there are now many more than the one shown on the B&W photo below.

After walking back down, we walked around the hill base towards the resurgence finding a small cave @ 30T 0450998 4805258 altitude 75m. This is about 3m long, stooping height, with a very narrow rift continuing at the back. No draught noticed. **New site 4892.**

The resurgence(s) are over a couple of holes along the side of the hill. The main springs are numbered **4893** @ 30T 0451071 4805206 altitude 70m (has the concrete pillar) and **4894** @ 30T 0451106 4805191 altitude 70m. The latter was not fully inspected – wellies required to inspect the entrance sump. The Barbantín depression is directly above the main resurgences.





17/April/2019. Peter E + Carmen S Alto Cuelo

Spoke to <sup>Maria</sup> Tatty at the Water Mill (moleno)  
 Note the road is closed over the bridge there  
 is a ford but not for a Ford Transit.

Tatty took us to see the old mill and a  
 cave which wasn't a cave just an arch  
 at the side of the river.

In the woods we found a perfectly round  
 pool of water with an outlet. Bubbles  
 were rising every few seconds "The boiling  
 well" 30T 453028 4805953 (photo in phone)

We followed the stream to its rising  
 30T 453132 4805779 there are small gaps  
 between rocks and places where it may  
 be possible to dig down to the water.

We followed a track then road east  
 (see track log) towards Brezales checked  
 out a few fields but saw nothing of  
 interest. Following the road west past  
 the shooting club but we noted a large  
 depression at side of road but no ~~way~~ leads.

30T 453426 4805519. Further along road  
 a large area of depressions contained a  
 low steeply sloping cave with Bats in residence  
 and a milk crate 30T 453340/4805506 <sup>new</sup>  
 with possible dig at bottom. Near by there is  
 a rock face which has been walled up but don't  
 know why 30T 453358 4805496. There were  
 a few more possible digs in the area. 4886 (seen by Juan)

We returned to Matienzo with a map plus  
 the phone number of a very nice lady for  
 Pedro to contact @

*[Signature]*



4864

17/4/19

Rigby

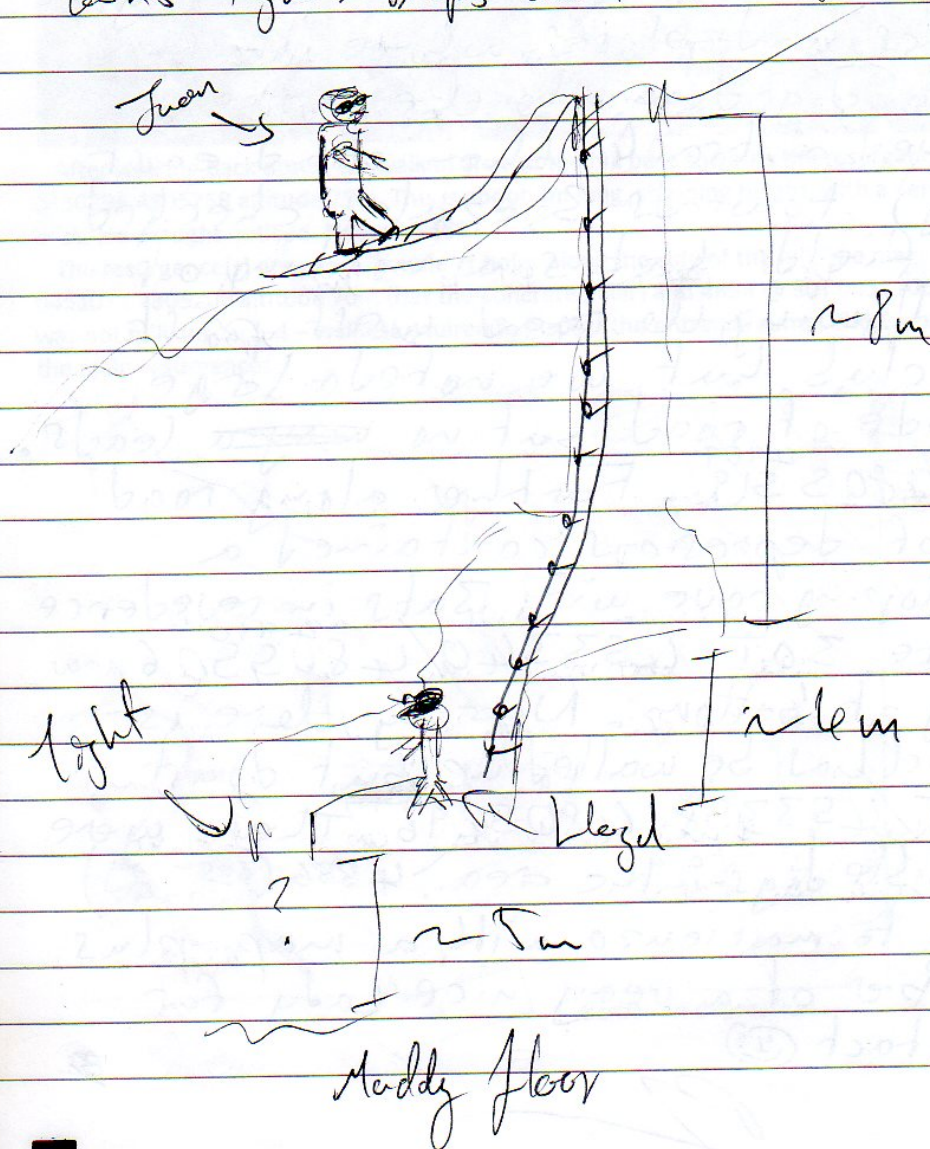
Lloyd C, David HC, David R, Juan C, Fran McD

First descent of a shaft just off a track.

Digging was provided by Juan standing on the ladder  
& a 3-person belay.

Goes ~12m down then continues further but

becomes tight. Drops about 5m to a muddy floor, unexplored.

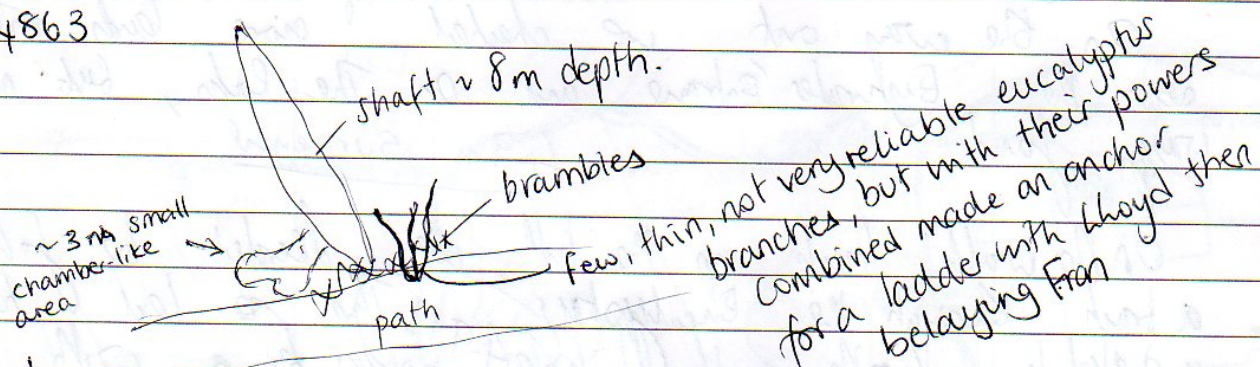




New cave - El Rincón 450586, 4805189

~~a large chamber~~ Entrance at the bottom of a  
shallow hole in the rock face. Immediately enters a <sup>4895</sup> 2m  
chamber with a mud floor.

4863



floor is made up of muddy alluvium that could be dug but no drafting or evidence of it going any further

Interesting & promising looking shaft just off the path, but after descending & having a poke about not too much to report. ~ 0.5m - 1m down from the bottom of the shaft are 2 small chambers that very quickly shut down after a few metres. Unconsolidated mud on the floor could be dug, but looks to be washed in & no evidence of drafts or a way on. Still worth taking a shovel to check.



0394 Cuera Colada. Chros Sx2, Alek, James C 17/4/89

Went to push the dog at the NW corner of White Pass, that was dug by ~~scraped~~ Alek and I last year. ~~Chros & I~~ ~~scraped~~ ~~Sam~~ Alek & Chros surveyed and Chros & I dug. The dogs all crapped out quickly and a big argument broke out between Chros, Sam & Alek about who would take photos first. In recognition of this, we decided to name the chamber "Photo Competition".

On the way out we checked more leads in the area near the Bushwater Entrance and on the lake, but nothing was found.

### 49m Surveyed

On the walk back up the hill we decided to follow a track through the *Bucalyptus*. This led to a shakelike with an ~~in~~ hole <sup>4911</sup> down to a freezing draught emanating from it (4911). This is right above the Eastern most part of Colada, but lower above. The draught is of Penada size, and bigger than the Bushwater Entrance one, & perhaps this will interest us more as we are on the way down to Colada (if it gets that far!) - Could this be upstream La Gama Interim Low Pot?

Finally, we went spooling on the road back to Matrebo (the really, concrete steep track back up to Puente Las Varas). We found lots of known caves, including 0400 & 1365-1371.

However, also found a couple of new things ~~to be~~, but didn't have GPS.

1. Cave <sup>4912</sup> in cliff E of 0400, up high. Goes for 5m to continuing passage. Needs a light. No draught.
2. Directly below #1 halfway down to grassy pasture, set of <sup>4913</sup> riffs, that could be speeded up easily. Stone fell for a few metres, then rolled further down.

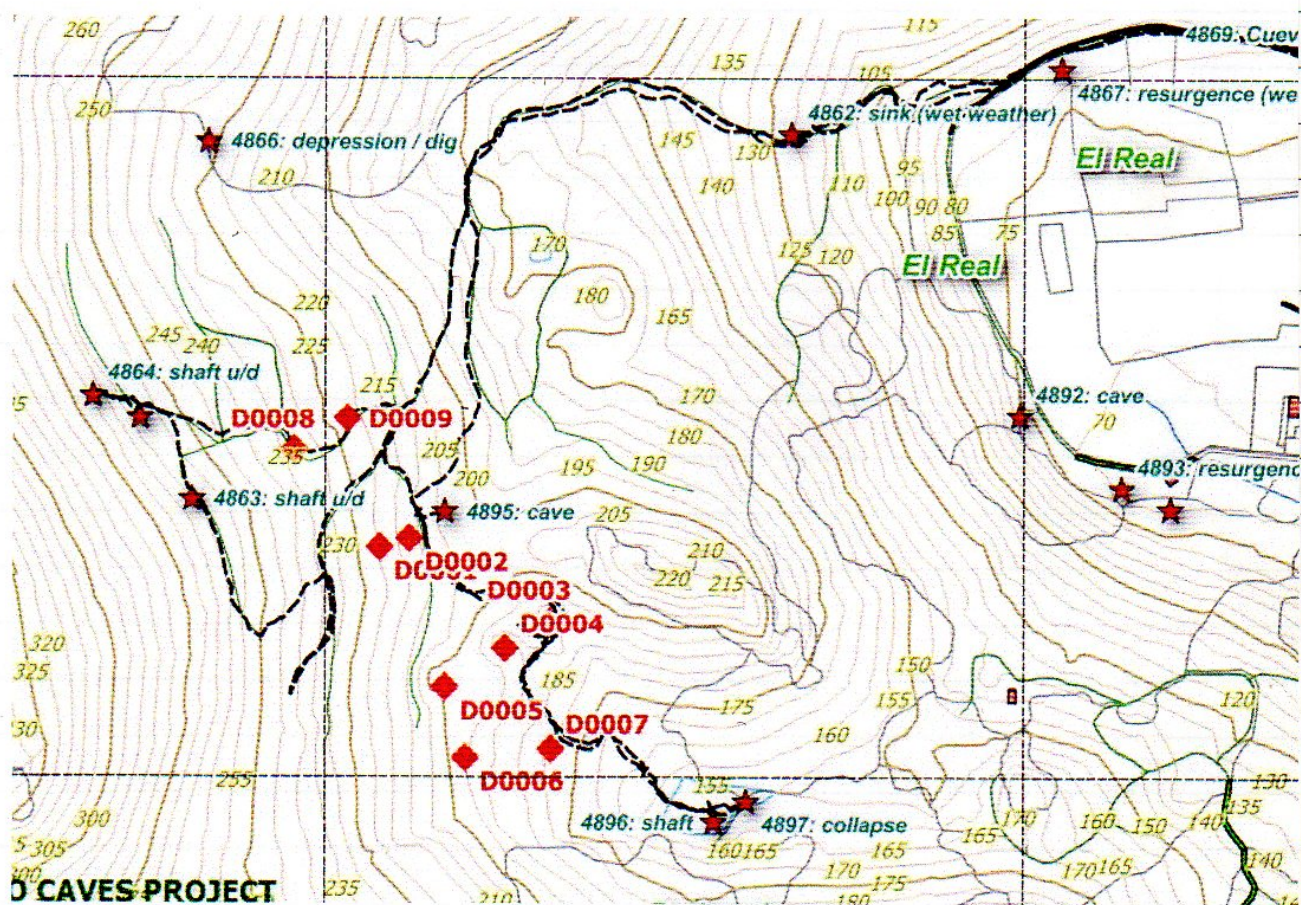


**Wednesday April 17<sup>th</sup> 2019** Juan, Lloyd, Fran, New David and Raoul up into the hills at El Rincón with a newly purchased hedge trimmer. First Fran descended site 4863 and Lloyd then Raoul dropped site 4864 (see separate accounts). The hedge trimmer was used on site 4865 but David traversed around the back and climbed down into the depression to find nothing.

Depression D0008 (new, with one vertical face next to the track @ 30T 450477 4805233-alt. 233m) was investigated by David by climbing down the far sloping side. Nothing found. A small depression, D0009 (new @ 30T 450516 4805255 alt. 222m) was investigated – nothing found. Lloyd found a small cave in a depression – this is **new number 4895** (30T 450586 4805189 altitude 204m, see Lloyd's account). Depression D0004 was investigated by Lloyd with possible cold air. Fran investigated a depression on the side with nothing found. Lloyd investigated D0007, finding nothing of interest.

Everyone then walked down into the enclosed Barbantín depression. All depressions at the base were investigated – 2 sites have a **new number: 4896**, a 3m drop in a rift that seems too small at a jammed boulder. 30T 450779 4804967 altitude 155m and a 2m deep collapse / possible dig at the east side, **new number 4897** @ 30T 450802 4804982 altitude 155m.

Although we seemed to be close to a possible track to take us back down to valley base on the south side, we climbed back up and retraced our steps to descend on the north side.



17/4/19 Chris vL, Alex R, Torer C ~~1992~~

On walk over to D394 we did a spot w/ spot holding down the new concrete patch. Most were known but we found a small core blocked with boulders at the bottom of roughly 450614, 4798816 6m deep, open shaft, free-climbable with ease

Alex R. 4918



**From:** kirbyjason1 <kirbyjason1@googlemail.com>

**To:** juancorin <juancorin@matienzo.org.uk>

**Subject:** Risca no 0025

**Date:** Thu, 18 Apr 2019 10:50

Went in 1330 on 17th april 2019. Entrance pitch of 10m with a stream. Opposite pitch bottom white calcite hole to dry mud bottomed chamber, dekit srt then down short chimney. To meandering phreatic streamway. with nice mud deposits 'some samples taken of fairy shrimps and some spiders

We tried to climb up mud slope to pretty bits but too slippery.

Then up to disneyland an back. Shous personnel Mark Jason Mirana Tom Amarta

**From P Smith**

Revised locations:

1264: 453498 4795121 254m

1265: 453458 4795081 256m

1266: 453457 4795074 257m

0866: 451824 4796985 239m

0867: 451740 4796995 248m

0148: 451847 4796958 248m

0421: 458128 4798624 237m

0422: 458036 4798464 263m (quite a small change)

0736: a site was located that possibly matches the description a small distance from the location. My grid ref: 451848 4796948 252m

0467: At the grid reference for this site, a hole is filled with rubbish, including an old fridge.

0632 is really Otero 2 (2787) (compare the two surveys). The position of Otero 2 is the correct one, for its northwest entrance. i.e. delete 0632

New Otero site (Secadura): 457296 4800209 49m Length 20m

A low entrance leads to a crawl, with an opening to daylight after about 3m. The passage turns to the left and the floor level drops in a walking height passage that becomes too tight. (Photos with Alberto Ceballos)

New in Secada: 451692 4796721 355m. Length 6m

A one-metre diameter entrance to a slope down, followed by a narrow rift upwards.

4192: (Really added nothing to the website description! Except "explored".)

→ continued



4856: The entrance is up a steep bank just to the left or south-east of the rock-shelter at 0867. The passage immediately slopes down into a chamber which is perhaps best reached horizontally along the top of the slope. This meets flowstone that can be followed back down to the bottom of the chamber or upwards past formations to where it becomes a little lower. A slot leads to the last chamber, where in wet conditions a small stream was entering about 3m up the end wall.

Poss. either 0843 or 0844 (San Miguel): 456343 4796161 345m

A question. I've noted on the maps that in Lluéva valley, to the north of site 3116, a piece of passage appears to be "floating" without an entrance. PART OF 3116.

Pete Smith 7/4/2019

4805 Peter Smith, Phil Papard, James Corliss  
13/4/19 Opened up dig, built Pannel Back of dig next to track had fallen in - more shoring needed. Draught-cold.

0252 (4732 ent-) - 13/4/19 - Peter, Phil & James.  
Quick look, found pool of water in dig at-end, where we had dug floor too low. James had a dig (he likes mud & water), and agreed it is a good dig.

16/4/19 4805 Peter Smith & Phil Papard with help from Julie B & Hilary. Put in some shoring to hold up area below path & then moved the in-fill, until back wall started to fail! Retreated or more shoring needed.

17/4/19 4805 Peter S, Phil P, Terry & Andy Pringle  
Terry drove to far end of mushroom field with shoring  
Put in good shoring on far back wall, plus a little below track  
Moved a lot of in-fill. Draught got stronger as holes opened up - looks good.



18 April 2019 Cave 880 Pat D + Miranda + Jason  
Took up tackle. Shaving skag (ish). Water has  
run in over the winter but free drained through  
the floor at end of dig passage. No draught. ✓

17/11/2019 603 N.T.B.P. Andy Ingle, Big Stone

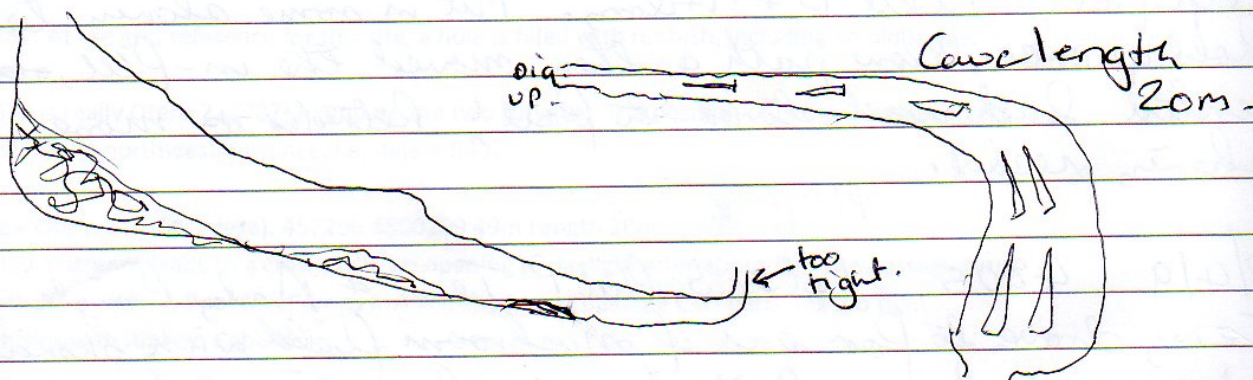
To check on work done by M.G. and J.E. at Christmas. We think that the  
best place to dig is now at the far end of the chamber as this has the strongest  
draught. The downside is that the spoil need pulling right back possibly  
even to the surface so its now a 4/5 person dig. Collected release  
& left at Christmas and rope removed from entrance. Strong draught  
out on a cool day. No gear left in cave.

18 APR 2019. Pete S, Carmen

Prospecting in new area, near motorway &  
El Arenal / RToletras area

Area, start 15 mins digging out yesterday's small  
cave (30T 453340 ~~4805506~~ 4805506 (4910) to see  
where the constriction at end goes.

It goes straight up, too small unless you're a rabbit  
lots of bones of animals, approx 6 bats



Some small holes were located in El Arenal  
area

Coordinate 30T 45365T 4803943

Bedstead hole.  
Overgrown but visible to 4m depth.



Another hole in the middle of a grassy area had a 2m log over the entrance. GPS Coordinates approx

30 T 453649 4803909, body size  
Vertical hole, stones rattle down some way.

18/4/19

(3234)

Llanio - Cueva del Rincón

(4868)

Andy R., Julie B., Pete S. - First to Llanio where Andy collected water samples for University of Lancaster project.

Then to El Rincón to dig in several places at the foot of the rock-shelter. 1) opened up view to small space with no obvious continuation. 2) promising dig with low passage sloping away (no draught) but stopped due to appearance of human tibia, skull fragment and other smaller fragments. 3) very low crawl continues with no draught on left of rock-shelter would need a lot of work.

18/4/19  
4 1/2 hrs.

Mark Edwards, Dan, Rob, Vaca

Newish entrance, picks, pebbles, gypsum, down to walking on eggshells; hot sweaty but nice, down; to a place where Dan was expecting something but all the new had been extinguished. enough

2019-04-17

(Feret)  
Anate Hinkle, Tom Thomson, Miranda, Jason (Frog), Mark (Tubey)  
Cueva del Risco - 0025  
C. F. Ch. Field Kirby or Cardwell Edwards

(See report - of some trip 3 pups back)

Went down Risco to show Frog, Tubey, and Miranda, as well as pulled the pitfall traps from last year. Amphipods collected from streamway, many were mating. Lots of centipedes. Frog also spotted some water beetles - very odd & interesting. Went up to Disneyland and also up the right side streamway. Miranda climbed the highest up the mud slope almost making it up to where are all the spiders; at-climbing everyone but barely not enough so we aborted after 30 min of muddy fun.



71 18/4/19 Hayde, Paul HC, David R,  
Fran McD, Boldy

Venture to far eastern end of Golden Void series to push possible connection to Heaboo Haven found last Easter. It was shit. Chossy, climbing/crawling ~~to~~ for ~ 20m to a chock. It looks like there is a 'solid' chamber beyond, but no way to get to it without near-death experiences.

11  
~

Near A27 in large chamber  
~~Before~~ Descended a pitch that had water running down & looked like the water at the bottom may be rising & running toward the Eastern end. Alas after descending ~ 15m poked through a hole to come out in the next pitch but then that was it. The rushing water sound was the water trickling down lots of little holes through the calcic floor & no possible way through for a human. It was a fun, lovely pitch & provided the service of a well to top up the life elixir water supply! But that's where it ended. However... a few short metres away...

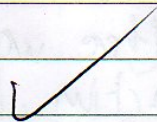
→ ... to the north a mud slope leads down to calcic boulders and a drop down to the continuing streamway. 23m of rope left us ~ 8m from the floor



Crossing the rock bridge across the large chamber near-A27 passing through the slot towards the possible connection to Hoodoo Aven, instead of continuing straight on, climb through the window on the far right, leading safely to the back of the very large flintstone shelf overlooking the large chamber. Follow easy walking passage to a crawl by some stairs. Climbing up a muddy floor and descending the other side descends to a small window into a chamber with a pool. Crossing this to a mud wall leads to a muddy slope and survey station PPO. Beyond this is a  $\sim 15$  m drop into a large chamber with a mud floor. This appears to continue to the left and according to Phil Pappard has not been explored. To be pushed later this week.

Near PP26, I went a bit further up a lead we found last year. Unfortunately all the rocks are worryingly loose so I didn't push it too much. The passage continued south (ish) but with further passage dropping down to the left, but due to all the loose rock seemed unwise to try & climb down. We also climbed down another bit to the left, which definitely used to have water running down unfortunately after spiralling down for a bit it just closes down & becomes too small.

On getting home, Lleged stood in a puddle of pee & Andy made Poo! cry.





19/4/19

1911 - Alex R, James C, Chris X2

We brought all more at things expecting this cave to go vertical by style being at least 4m above collado, but as it turned out a single ladder would do. I (Alex) was first down and found what we thought was 11m drop was actually 6-7m and then a steep slope. This descended down for some distance past many boulders in a very loose chamber.

Once I found somewhere to hide from the shrapnel I showed the other's down. James and Chris sh' find an improbable dig in the boulders while me and Chris surveyed into the one ~~pass~~ open passage, both on inlet with a small stream and draft.

Strangely this did not crop out immediately and proved to be rather pleasant going, stepping and occasional walking height passage.

Our surveying was briefly interrupted by a bat that attacked Chris. More passage continued but it got decidedly small, but the squeeze section was through sand which simply fell off making it for easier for me.

The passage split and the other caught us up. The cave changed character at this point, into high rift passage. We were forced up and along a high up, across many holes. Eventually we reached a climb up that only James braved. Beyond this the only way on seemed to be up or over that would need bolting it did not look like there was anything at the top.

Back at the Junction, left followed the rift at floor level, to a small chamber. A passage led off but this ended at a rabbit size hole.

196m survey



19th April 2019 Phil Papard, Juan, Andy Pringle and Patrick up the long track to look at holes about 900m south of Monte Llusa. Started at the "black holes" site X009 but this was just an undercut where one side of the previous passage has collapsed. No way on at either end and not really a cave.

Site 4870 was visited next. Juan descended a 12m, mostly free-hanging, entrance pitch that lands on a steep debris slope. Three metres down is a hole down over boulders that probably requires some protection (i.e. another ladder) to tackle what seems to be a 4 to 5m fairly narrow drop with the far wall belling out. No draught noticed. Patrick also descended to line Juan at the top of this drop. An alcove about halfway down the shaft also needs looking into.

Site 4871 was descended by Andy with Phil surveying afterwards. Description below.

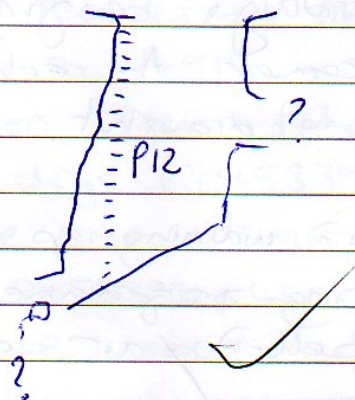
Site 4874 was confirmed as a small, choked cave then Juan went down the 5m drop at site 4875. This shaft ends at a boulder blocking the way into what appears to be blocked alcove that goes to the right for a couple of metres.

Site 4891, the 2m drop with red posts, was looked at and a small, draughting dig revealed by Andy at the base.

Patrick takes the Tony Curtis role in the 1956 film Trapeze

Site 4871 - 3m drop to boulder soil floor. Back entry pitch is a crawl that turns right following line of hole for some 3m to end. On east end of open hole is a rift that descends to a cross rift full of bones (modern) - No go. 21m

4870



14/4/19 - Site 0138 - Peter Eagan and Pete S.

Photography trip including re-exploration and survey (19m) of small chamber explored by Lagger in north-east part of the cave. A complete photographic record of the cave was achieved.

0880 20/4/19 22 Pat Ladies Patrick, Phil & Peter Smith  
Trip to cap big boulder in dis. Took 3 capping gers to break up. Now safe on floor.



4805 20/4/19 - Patrick, Peter S + Phil P.  
More digging, now about 5m deep. What we thought was  
"bedrock" is mainly limestone blocks eroded away. Now  
need to put in more shoring. Good draught, but - will  
need a lot of work. ✓

2019-04-19

Reñada - Ferret & Amata - Entomology

Pulled all 3 traps placed last Easter in the lower series from Bottom  
Entrance. Went up to middle entrance to spot collect (didn't find any of  
interest) and do a little photography. ✓

2019-04-21 Pat → 880 2½ fat Ladies.

cleared rubble from yesterday's banging plus more  
clay to get around the corner. An echo from  
ahead (not big) but still no draught.

The fat ladies can be heard warming up for what  
promises to be an exciting programme but so  
far they have not expelled air on stage. ✓

2019-04-20

Ilario - Amata & Ferret - Entomology

- Pulled pitfall traps left last year (5 in total)
- Some photography
- Spat collected isopods & harvestmen ✓



20/4/19 4474

(35)

Chris Scaife, James Carlise, Chriss Shaman, Alex Ritchie,

We joined Phil Parker and Richard Bendall in 4474, to push a couple of leads that they had found recently.

First we climbed up into a fairly large chamber - The Big Red Ballroom - about 30m long, choked with large boulders.

Next we descended a small rift into the Travelator - another 30m of passage.

We then found Richard & Phil, and surveyed some passage they had found a few days ago - 26m of narrow rift, which we have called Snotty Nose Passage. All of these passage names ~~later~~ have been inspired by Alex Ritchie's legendary appearance on Total Wipeout.

Survey 3 - 24.62m, 2 32.42m, 1 29.68m (87m Total)  
20-4-19 Peter Egan, Carmen Smith, Mark? LA CUESTA (NEW AREA)

SURFACE PROSPECTING AROUND CUENA TOCA,

ENTRANCE TO 4919 - descended by Mark,

SURVEYED MARK + Peter Approx 30m with x2 possible drgs. (0453391, 4804714)

- 1- ~~3~~ OTHER SMALL HOLES - MAX DEPTH 3m. 2m WIDE x 1m AT BASE 0453331, 4804837. - Dig - ~~4~~ 4920 ↑ 110m
- 2 - 3m DEEP, NARROW DIGGING 4921 (2) ↑ 145m 0453372, 4804835.
- 3 - SMALL HOLE NEAR NO 2 UNDESCENDED 0453369 4922 ↑ 145m 4804846.

FURTHER DOWN COMING IN ON MULTIPLE FENCELINES.

IS A LARGE DEPRESSION. (4x5m) APPROX 7m DEEP REACHED BY LADDER TO CHOKED FLOOR.

0453458, 4804829. 4923 ↑ 173m

21-4-19 WALKED NEW AREA, NOTHING SIGNIFICANT FOUND. (SMALL HOLE TRACK JUNCTION. 0454168, 4804089)  
Peter Egan, Carmen, Chris (not Scaife)

Failed to find Cuena Low Padomas with Co-ords provided 4924 ↑ 207m



22-4-19 Peter Smith, Peter Eagan, Carmen Smith,  
Mark ~~Edwards~~, Jason Cardwell

Return to 4919 to push x2 digs.

Passed calcite blockage 6m to chodce

Started digging floor of other dig, spout runs  
away down crack, further investigation in  
summer ?? draught ✓

More surface prospecting to 3m drop. (large rock  
covering top) 0453390, 4804551 - Walls ↑125  
Very friable, possible way on (dig) with  
cave (stacked up on slope) ✓

x2 further depressions looked at requiring digging  
0453433, 4804617 <sup>4926 ↑146</sup> TOGETHER.

TOURIST TRIP INTO TOCA WHILST THERE LOOKING AT

~~999~~ Digs + Climbs. ✓

Peter + Carmen looking for Cueva las Palomas.

Found a deep large depression, easily climbed  
into about 15m round. Cave / Rock shelter  
all the way round at bottom. Lots of goat shit  
no obvious cave passage off, ?? Collapsed  
chamber? Very old stal. ✓

Coordinates 0454158, 4804001, - SUSPECTED

DEPRESSION, WHEN PETE VIEWED ARIEL MAPS - SUCCESS!

Following a phone call to EMILIO, finally located

(4004) Cueva de las Palomas. 280m long, various  
meander passages leading away from central  
entrance chamber. UNSURVEYED BUT KNOWN.

0454231, 4803976.

x2 OTHER ARIEL LOCATED DEPRESSIONS OF  
INTEREST WERE ABANDONED DUE TO DEEP ✓

UNDERGROWTH & RUNNING THE GAUNTLET THROUGH  
BEEHIVE CITY, BEING CHASED BY ANGRY SWARMS OF  
BEES - NOT FUN! PETE GOT STUNG SAVING ME  
FROM WORSE! HERO :D



22/4/19 Patrick, Andy P & Phil P.

(4669)

4854 after sorting out team at Drone Pot we went up to the two holes found in Feb 19. 4854 is a long term dig can see down crack full of small rods for a metre or so.

4853 is a dig at SE point, but to SW is a small hole that need copping at to get to open area & drop to passage - out-drought

2019-04-22

(0002)

Coverón - Ento Team - Ferret & Amata

Pulled 3 pitfalls left last year - one was ruined by mice, other 2 usable. First time w/ Rodent issues, but there is a lot of mice crap in the cave all over.

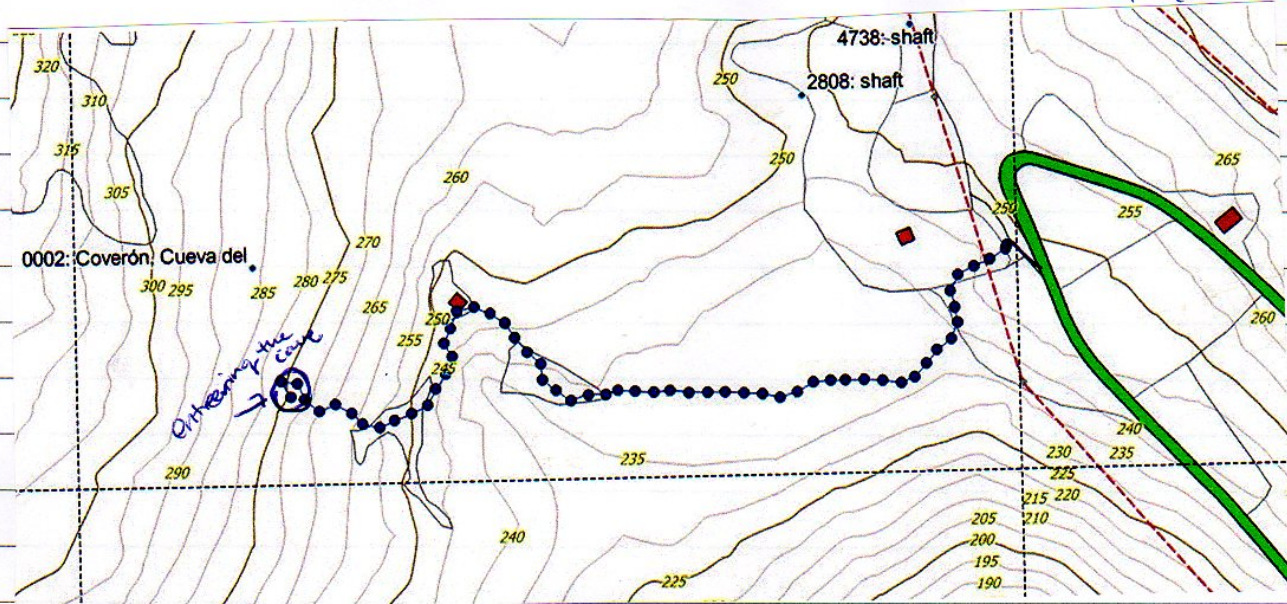
Saw a Tawny Owl fly out, also. Found a really good diplurians we spot collected and the farmhouse at the bend is now being fixed up. The lady was very friendly & let us park in her yard. She also showed us the way to the path up, which Ferret took GPS track of for adding to files (Bug him for it).

2019-04-23

Jivaro II - Entomology - Ferret & Amata

(0017)

Netted & spot sampled - found isopod & antrope in small pool in formation chamber Took photos. That's all



track to Coverón, possible in cave (doubt)

↑ track uploaded into Desktop Easter 19 folder.



4669

22/4/19

Drone pot - Chris Sharman, Alex Ritchie - Underground.

- Phil Papard, Pringle and Patrick surface

Me and Sharman were the first to arrive. We first investigated the hole the farmer had covered with lintels to see that the old wood that made the lid was now down the hole, and holding up a very large boulder. We decided not to tackle this, and look at a possible other way in while we waited for the others.

✓ 4668

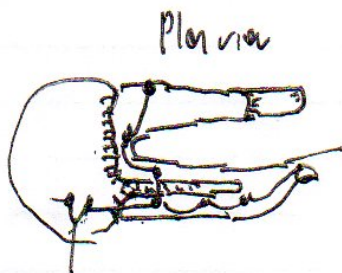
The alternative cave 5m away did indeed connect to the main cave a few meters down the entrance pitch but the passage was very tight and awkward and did not allow room for putting on SRT kits. The best bet to make this bigger was to dig out the mud floor but one would have to do this for about 10m and would require a few days of digging to make this a viable route.

Eventually we were joined by Phil and gang, where a way through the lintels to the south was found. All we needed to do was remove the large boulder suspended by rotten wood. A bolt was put into the rock and one on the surface. A 4 to 1 pulley system was then rigged and the boulder was quickly released from the hole and rolled down the hill, lest it make its way back into the hole.

After the wood was removed, all that was left was for me and Sharman to enter the cave. We rigged from the hanger at the entrance and then a sling around the second sleeper. We then descended the new rope whilst removing the old one. We found an easier hang to the second part of the pitch which made things a little easier.

We then tackled our main objective which was to enter a passage at the top of the pitch. This was an awkward rig, with loose ledges liable to fall down the 80m pitch. Chris had a go first but after the first bolt failed to go in he handed it over to me. Eventually we managed to get into the side passage with 4 bolts. It was obvious this was false floored and after about 5m was a pitch down, though a small (for now) hole. We did not have the rope to rig this, it looked to be about 15 - 20m deep and most likely joined up with the big passage seen part way down the main shaft which is currently un-entered.

**Rigging** - In-situ, except for 1 spit and sling required.





4

#853 23/4/19 Patrick, Andy Pringle, Phil P  
Capped the rat found day before. Used about 35 caps  
and now almost big enough to get down. Needs another  
half day of work. Today rati had a strong inward  
draught. ✓



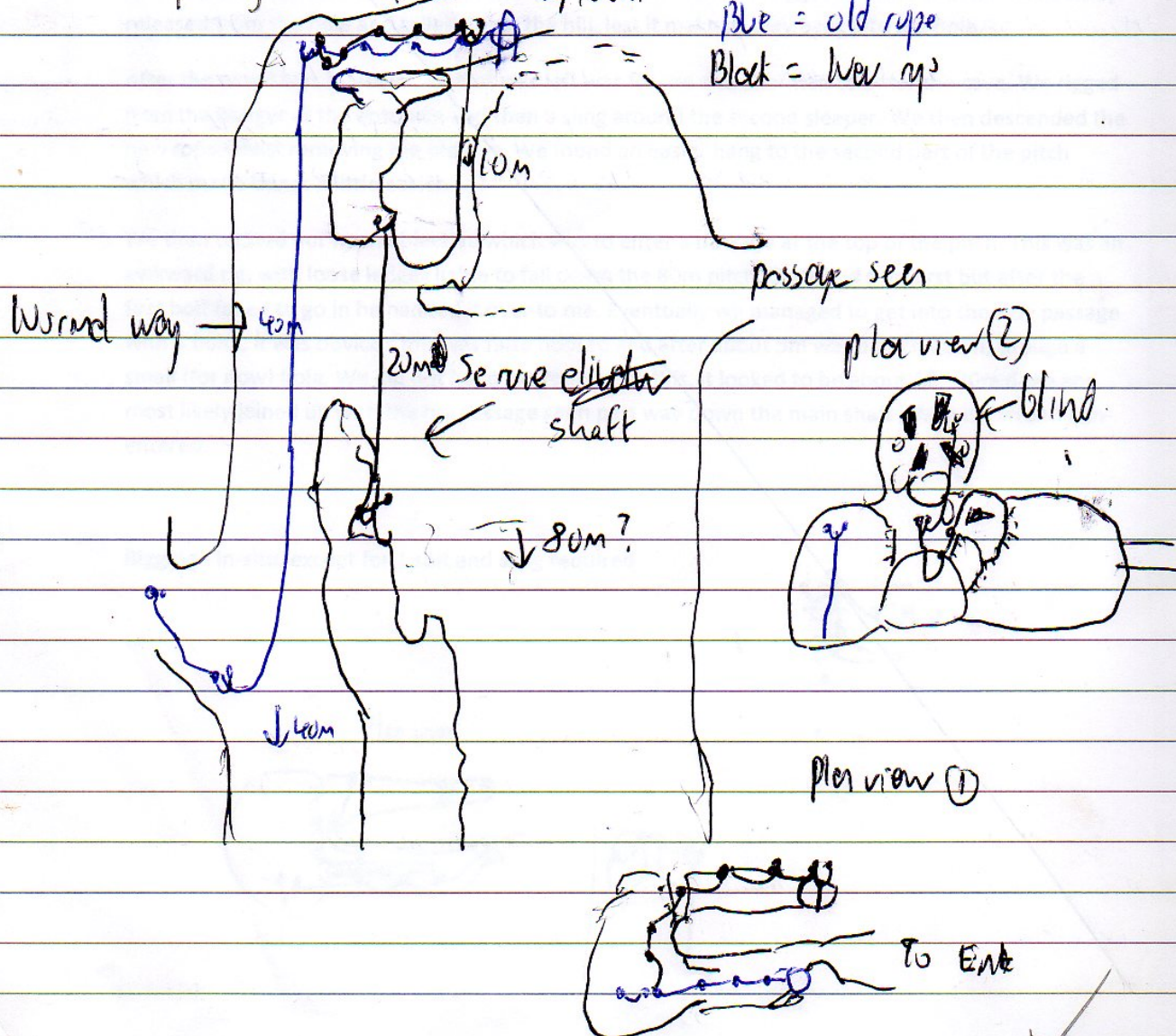
4669 23/4/19

Drone day 2 Alex R, Chris Sh, Mark Edwards

Continued along traverse and passage beyond with non-solid floor, dropped pitch about 25m onto a solid rock wall between two shafts. Horizontal passage that went off was blind after 10m (Aven). New shaft is estimated to be about 80m deep from the ledge (4 seconds drop time) and ran out at bottom so undescended. I had guessed this curved back into the horizontal shaft but it may not due to it seeming to be deeper. Still I am going to call this service shaft. Survey data failed to work so no survey data.

Side passage at top intended to exit

Blue = old rope  
Black = new rope





19/04/19 - Peñada - Raoul, David, Mike, Fran, Lloyd  
We went to push a lead in itchy crotch series, a climb up, with a boulder above. We found what we thought was the lead & bolted & climbed up to find it closed off. Upon returning & talking to Phil he told us way more information that suggested we <sup>were</sup> definitely not at the lead which was a bit further along the itchy crotch series. ✓

20/04/19 - Socks <sup>1017</sup> - Raoul, David, Mike, Fran, Lloyd  
After a quick lesson from Phil we went to socks armed with snappers, hoping to get a bit further. After Lloyd & Fran went down & falled around with drills & snappers, we went in hope that we'd done it right. After a brief moment ~~where~~ where the snappers didn't go off we hear a bang & smoke come out of the pass hole. I went down with Lloyd following & hauled ~5 tackle sacks full of rubble out. With that out of the way I managed to squeeze in & get my legs round a corner. Unfortunately this bit is too small to see past your legs & what you are to drop into. You can move your legs about in the space that opens up, but dropping rocks down makes it seem too much of a drop to blindly go into. Fran had managed to squeeze into this bit last summer pre snappering & said much the same. We did

We did however save two marbled newts & a toad from the ~~pr~~ bottom of the pitch. ✓

21/04/19 - Mostajo - Raoul, David, Mike, Fran, Lloyd, Chris  
Armed with more rope we descended onto the cruddy slope near survey station marked PPO. At the bottom of the slope we ~~also~~ found a way down to bouldery rift passage which we climbed down & descended. This got to a pebbly dry river bed. It carried on upstream for a while eventually reaching water & then a sump. downstream doesn't go as far though Lloyd & Chris found cave millipede creatures.

Near A27, we went down one of the undesended pitch. This opened up a bit before going down to a small stream which couldn't be followed as it closed up.

319+34 survey ✓  
157 re-surveys . of which 165 re-surveys  
157m New



23/04/2019 CHRIS SAFFE, PETER SMITH, CAROL SMITH

We went for a walk round the back of Cruz Usam to finish checking 0822 (452648 4793971).

[Careful, the Spanish seem to have explored a cave with the same number '0822' ~~XXXXXXXXXX~~ (452474 4793681)]

We descended this on ladder to a depth of 15m. There was no continuation at bottom. - First drop descended Easter 2018, 2nd drop this year

We then walked back across the limestone and found three unrecorded caves, just on the edge of our permit area.

(4943) - 452905 4794122 : 7 m long, begins as standing height rift followed by squeeze into body-sized hole.

(4944) - 453453 4793919 : pitch, undescended.

(4945) - 453716 4793758 : small chocked cave, 5m long ✓

23/04/19 Peter Sagan, Carmen Smith, Jason Cordwell (Kirby) Valine, trying to tie in Catalan Survey of Zona Blanca with parts of Birdsworld.

After lots of scratching around finally found. Small sandy hole to series. Lots of passages not on the British Survey. Plenty evidence of survey by presumably the Gats but struggling to tie in. Will return.

(The Catalan survey shows some of the survey's passage but not all.)

Further investigation on survey suggests the Survey ~~was~~ British markers were British + the equates have been ~~done~~ from SS <sup>(low)</sup> & S16. However the passage & detail doesn't appear on the UK survey.

73m survey ✓



23rd April 2019 Juan and Dan investigating low and middle level Hazas on the west side.

First we investigated an interesting area of limestone outcrops just off and to the west of the main road and north of the decaying housing estate.

A	4928	452542,4805910	64m	Hole covered with dead branches.	photo
B	4929	452517,4805916	64m	Hole filled with tyres.	photo
C	4930	452521,4805909	64m	Rift covered with old branches	photo
D	4931	452506,4805912	64m	2m deep to a partial soil blockage	photo
E	4932	452521,4805951	70m	A possible crawl under a rock face with soil to remove.	photo
F	4933	452463,4805930	66m	A roomy entrance in a steep, fenced shakehole. Slope down to a roomy crawl and a small dig. L=10m	3 photos
				Photo of outcrops where above holes are found	
D 0001	D0051	452410,4806096	90m	In wood. Large, bramble-filled depression. Not entered.	Photo
G	4934	452487,4806167	100	At an 8m high scar, a 4m climb down reaches a dig with a possible draught. L=6m	2 photos
H	4935	452698,4805875	65m	A 3m long, earth-floored cave/dig beyond a rock arch. L=3m	Photo
I	4936	452698,4805799	58	A sink and cave entrance in the centre of a field with pipes.	Photo

Rain occurred at this point so we retreated to the bar attached to the fireworks shop for coffee and tortilla (recommended). After lunch, we investigated other interesting features seen from the road.

J	4937	453104,4806518	45m	GPS taken on road for resurgence and cave first entered and sketched in 1977. GRef to the left is an estimate for the resurgence. (Bob Grimes had earlier described holes dropping down, one of which could be the cave entrance.)	photo
		Sketch-over			

Back towards Hazas, a small stream running under the road was traced back to a concrete pipe with water emerging.

K	4938	452947,4806131	53m	Grid ref is an estimate	(no photo)
---	------	----------------	-----	-------------------------	------------

Further SW along the road, an Aquarbe-maintained water tank on the right was noticed (photo) so we parked up here to investigate the limestone outcrops, hoping to find a large cave above a resurgence. A slit in an inspection hatch allowed a large flange and pipe to be seen a couple of metres down.

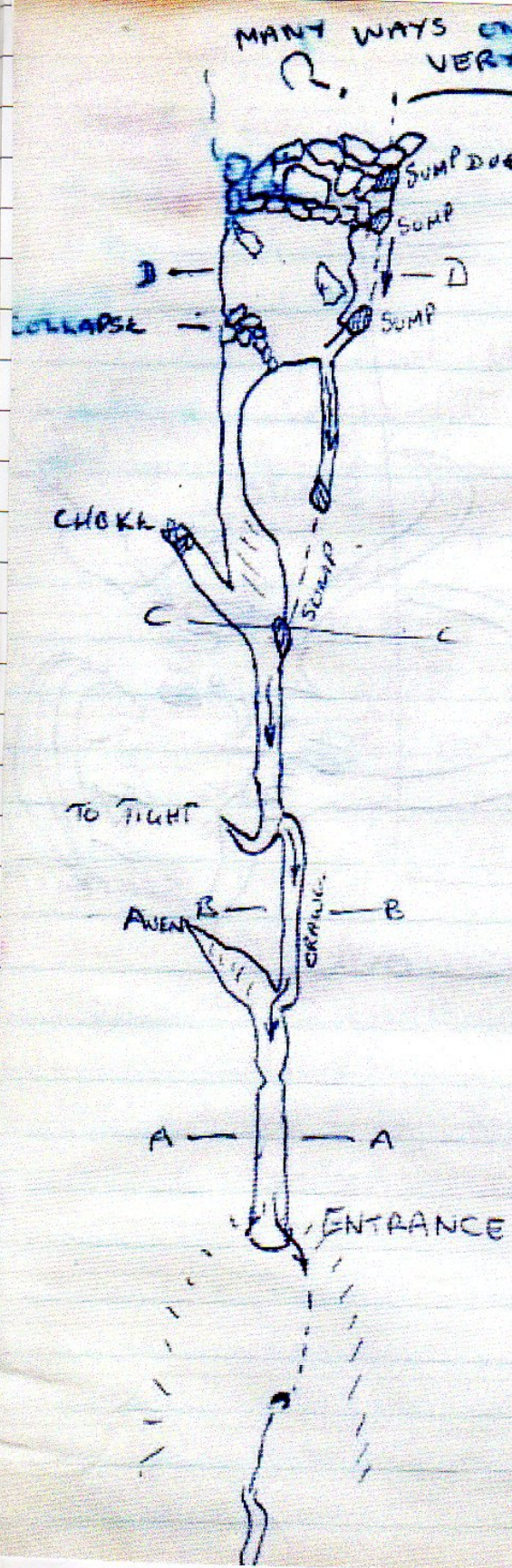
This limestone was the base of the outcrop where site 4935 is located and is similarly very smooth and massive, giving the impression (to me at least) of being eroded in lake / lake margin conditions. This may tie in with JCFG's thoughts that the Solórzano / Hazas valley was enclosed in the past.

There appears to be an old streambed that goes under the road but any past resurgence here seems to have been well captured and covered.

The outcrop is well covered with trees so the GPS readings could be suspect.

L	4939	452795,4805850	65m	A 10m long, smooth-sided rift with short	2 photos
---	------	----------------	-----	--	----------

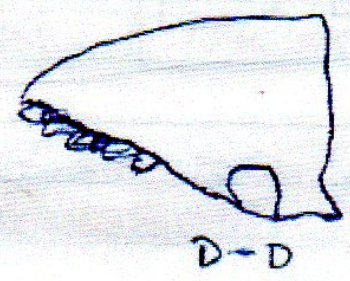




LARGE UNSTABLE CHOKK.  
SUMP DUE TOO CHOKK.

FOUND D.C.C. UNDER OUR  
BARRYS GUIDANCE.  
EXPLORED BY PHIL AND STEVE

BCRA GR 1



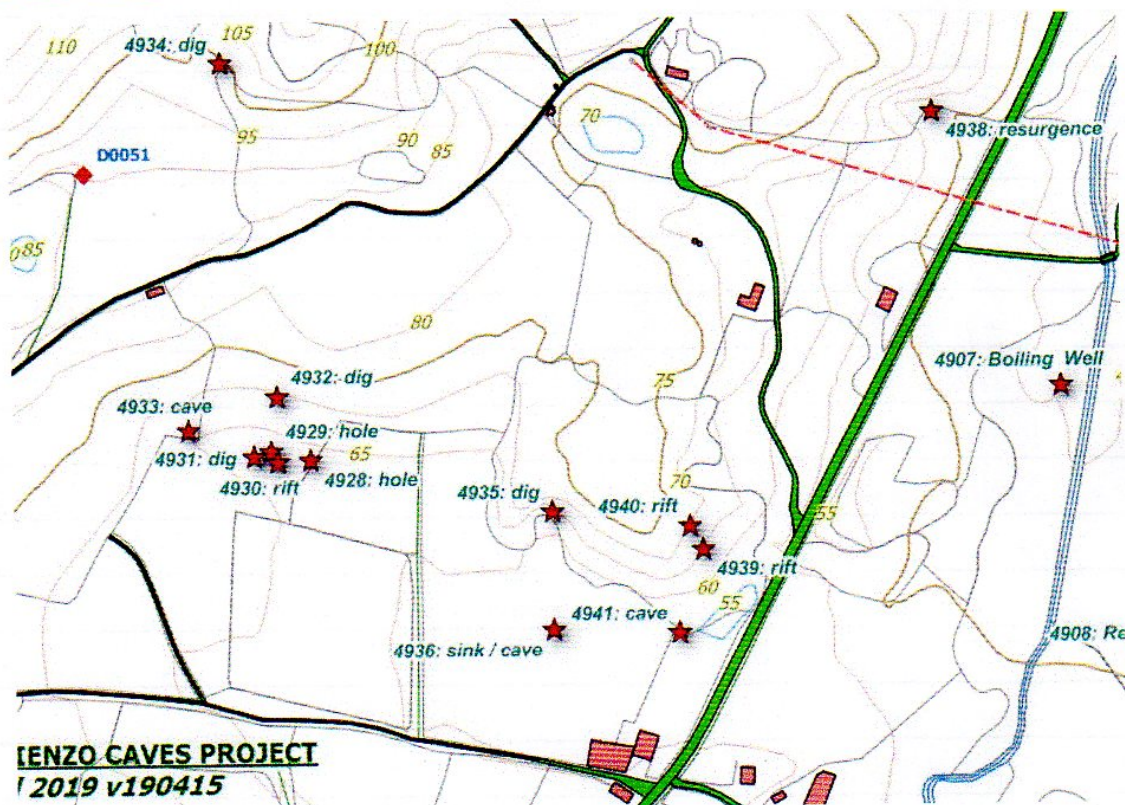
→ STREAM

Site 4937.

This page from 1977  
logbook.



				alcove on the left ends at a tight dig up and along	
M	4940	452787,4805865	70m	Further up the gully from L. A 5m deep slot. Not descended.	Photo
				Dan investigating side of the gulley	Photo
N	4941	452779,4805796	57m	A small complex of rifts and tubes where one smaller entrance has a grill. A rift to the left may dig beyond a couple of blocks. L=15m	2 photos

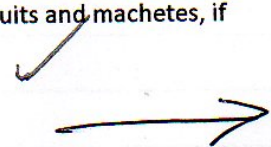


At El Rincón, the resurgences and overflows were re-investigated.

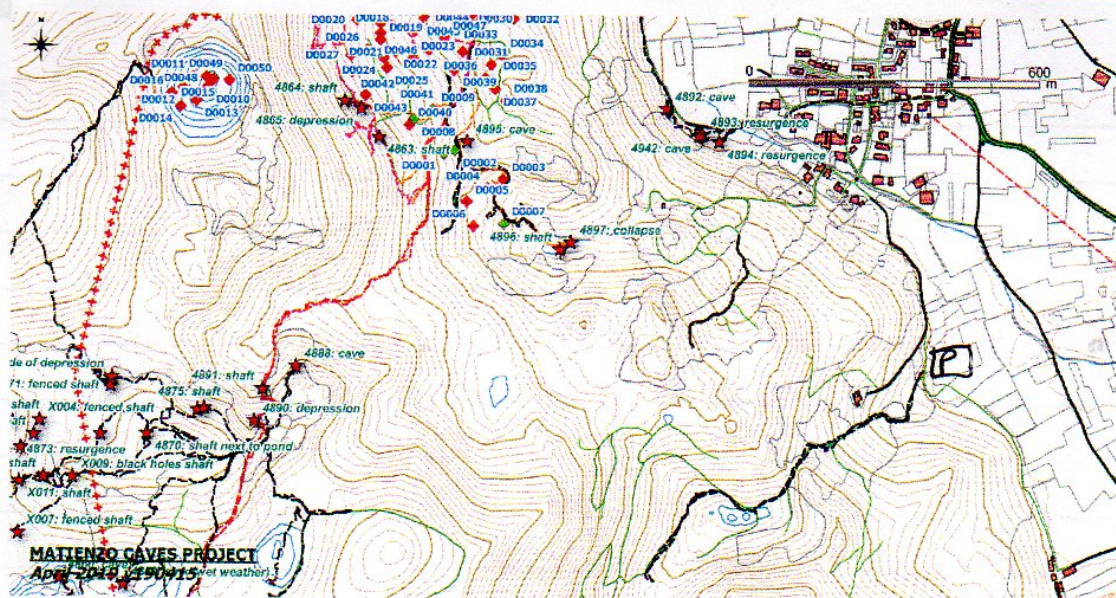
P	4942	451088,4805207		Behind the resurgence at the obelisk (site 4893) a small depression had a hole down to (static?) water. A photo shows a wall above the water. This may be a dive site.	2 photos
---	------	----------------	--	--	----------

Site 4894 was also investigated. There was no flow here this time meaning that the roof could be revealed by digging a small trench and/or pumping out.

On the way to walking up to an enclosed depression, a couple of other possible overflow sites were seen against the base of the hill. The track along the base of hill was followed to the south until it split. A steep walk took us to a very large enclosed depression, perhaps 300m x 200m with sub-depressions. No jungle bashing was carried out - this will require at least oversuits and machetes, if not the hedge trimmer.







25/4/19 0880 2 1/2 Fat Ladies - Patrick, John, Ferrett, Al Amata, Phil P, Peter Smith & Chris Sharman

Yet more digging. At end there now needs to be more room to get into dig and work. One large rock removed, but two more needs capping & then there will be enough room to work.

25/4/19 0252 via 4732 Ferrett & Phil P.

3-boned Ferrett cave, found lots of bat droppings and remains of beetles they had brought in. Small "cave" beetles seen eating the remains.



24/04/19 - Rocks - 1017 - Raoul, Lloyd, Fran, Mike, David  
 Returning to the site we p. used another snapper to get round the corner we were previously stuck at. With this removed we can free climb down a short bouldery bit, which then opens up into a chamber  $\sim 4 \times 4$  m. There's a muddy bit under a rock that looks like it might be diggable. We'll have to return on a hot day, to try & track down where the draft continues.

While we didn't find <sup>(& save)</sup> any amphibians or reptiles, there was a bat in the chamber hanging off one of the walls. ✓ 25.44 m survey

2019-04-24 : Las Cosas - Entomology - Amata & Ferret (Site 84)

Upon idea from Juan, we went up to Cueva Las Cosas to check the pools for isopods and other invertebrates. Sadly, we found no life in Cosas other than a singular lesser horseshoe bat. We spent time on photography instead, for the entire chamber it needs some actual flashbulbs.

2019-04-24 : 880 - 2 1/2 Fat Ladies

Ento Report (Amata & Tom) — found quite a few cave-specific species, including a possible Iberine <sup>mazarredo</sup> ~~mazarredo~~ (spider, very interesting), and Amata found very first pseudoscorpion for Mathewz in a cave, possibly in Cantabria (for in-cave find). We also both helped dig. Tom also went to site 252 around the corner and found a fungus beetle.

↓ Digging Report by Patrick

Patrick, Chris, Feret, Amata, Phil, Pete → continued digging at end. Still no draught. Tools brought down. ✓

25/4/2019 John P and Alex R. 0059 Agua.

We swam and scrambled to the start of the 300 m swim then turned back as SP was getting cold. We both unavoidably drank some of the cave water when we fell in on one of the rapid sections. So far we have not fallen ill with cryptosporidium. We will update this log if we become ill. ✓



Alex R + JP - Visible cover in a line on the Hill

25/04/19

After a fire the scrub land had been cleared, we looked at the 3 visible cover at about the same altitude

A - Far left. 1M Deep alcove, black wall

(4946)

B - Middle, 1.5M Deep, shelter in mud / rock

(4947)

C - Right. 5M crawl to two small passage with animal bedding. Alex.

(4948)

4669 ~~At~~ Torca del Dron Phil P + Juan 26/4/19

Batted on a small grid to opening, under by 2  
8 mm through bats, so only need a bating sprayer to  
take off.



Surface prospecting on 4878 Alex R, John P, Chris S 26/04/2019

As no one had looked yet we took a look at grid

~~4878, 4804~~ 45428, 48054 4546, 4804

~~4543, 4805~~ 4542, 4804 4546, 4804

Near the motorway and found the area with locking in cover and light feeler. The ground appeared to be mainly shale yet there were no obvious limestone outcrops.

We then headed south and rediscovered 4878.

As well as surveying the known passager 20m, we found another 85m, by pushing on almost flat at bedding.

We re-encountered the stream and after a sizeable chamber we reached a xmp, though it could just be a duck a check in full caving gear is required. From the

chamber larger and decorated passage led backwards following the entrance crawl which eventually choked.

Two small passager were noted in the entrance crawl both choked with mud a short way in (dry?). A full starting cave surveyed. passage connected the upper and lower passager but this was not pushed. Length = 105m

Alex.



4870 - Shift next to Pond 27/04/2019

Chris Shorman, Alex Ritchie, Tom (surface)

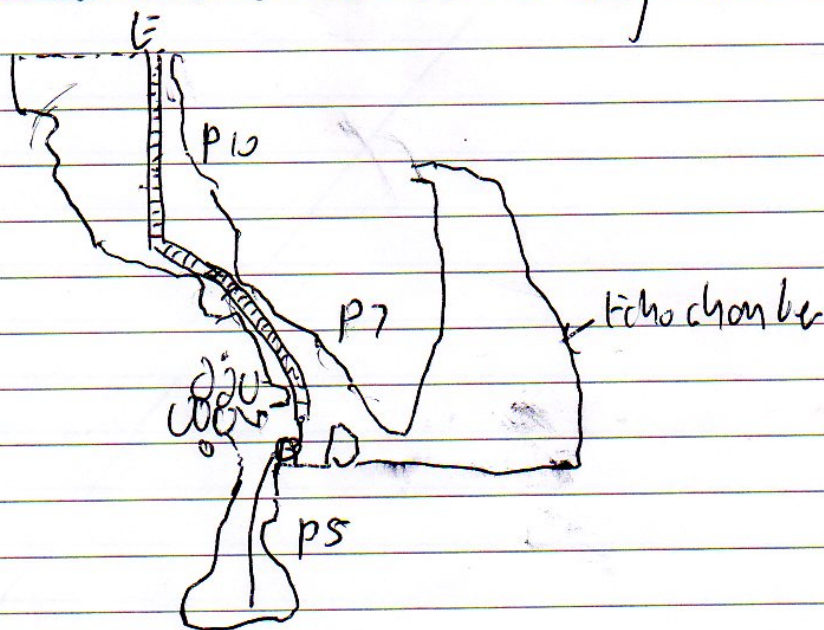
A little going away present from Tom, was to push the second pitch in this cave.

Me and Chris descended and tied the <sup>ladders</sup> ~~ropes~~ together. Chris assured that this extra ladder was not needed until the boulders he climbed down fell off making the ladder required for the bottom though it did not reach.

At the bottom in this very loose chamber which continued to collapse when I climbed down was two ways on.

Straight on from the ladder behind a boulder pile was a very echoing chamber. I entered feet first and all I could see was blackness, excited I slithered through to find it was just a large open chamber 5m x 3m by 1m high. No way on.

The other way was a small hole at the bottom of the chamber, below the ladder. This appeared to drop to a ledge before falling into a big rift or so it looked. We called for more gear and Chris rigged it from a bulldozer and the ladder. The hole at about 15-20ft deep ended in a small blind chamber and no way on. -C



Q88



-: 2019-04-26 :- Melino / Agua 59

Ferret & Amata - Entb Team

We did not go past the swim. Just photographed and spot collected some spiders.

2859  
2019-04-27 - Tarca de Vaca - Amata & Ferret

! \* Last pitfall traps pulled \* !

Also of course some photography & spot collecting. The pitfalls worked very well we only lost one in Coverón to rodents. Lots of data to sort through, likely new species and new localities. Overall, extremely successful project.

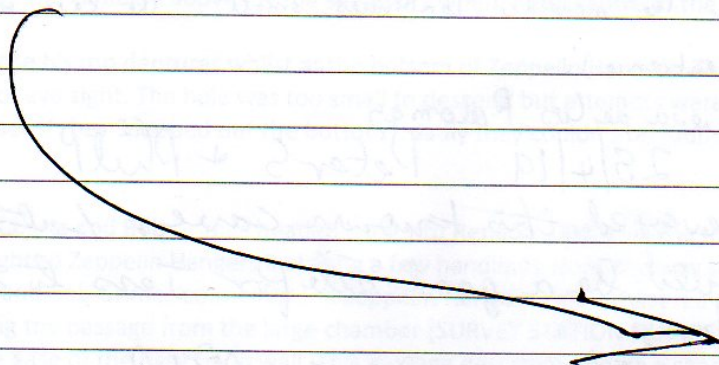
Very happy with the results and Tom (Ferret) will give a full report in future as need a lab to sort stuff. We did note a stalagmite in Photographer's Passage is broken (and was re-stacked up) that was not broken last year.

28-04-2019 Cueva del Rincón 4868

Bones found on 18-04 were returned to the cave and re-buried, in the ~~left~~ right-hand side of the rock-shelter where digging was stopped to avoid further disturbances. A short search in the jungle failed to find 4869. PS

Orillongoco 462  
2019-04-29 Sistema del Drillón Ferret & Amata

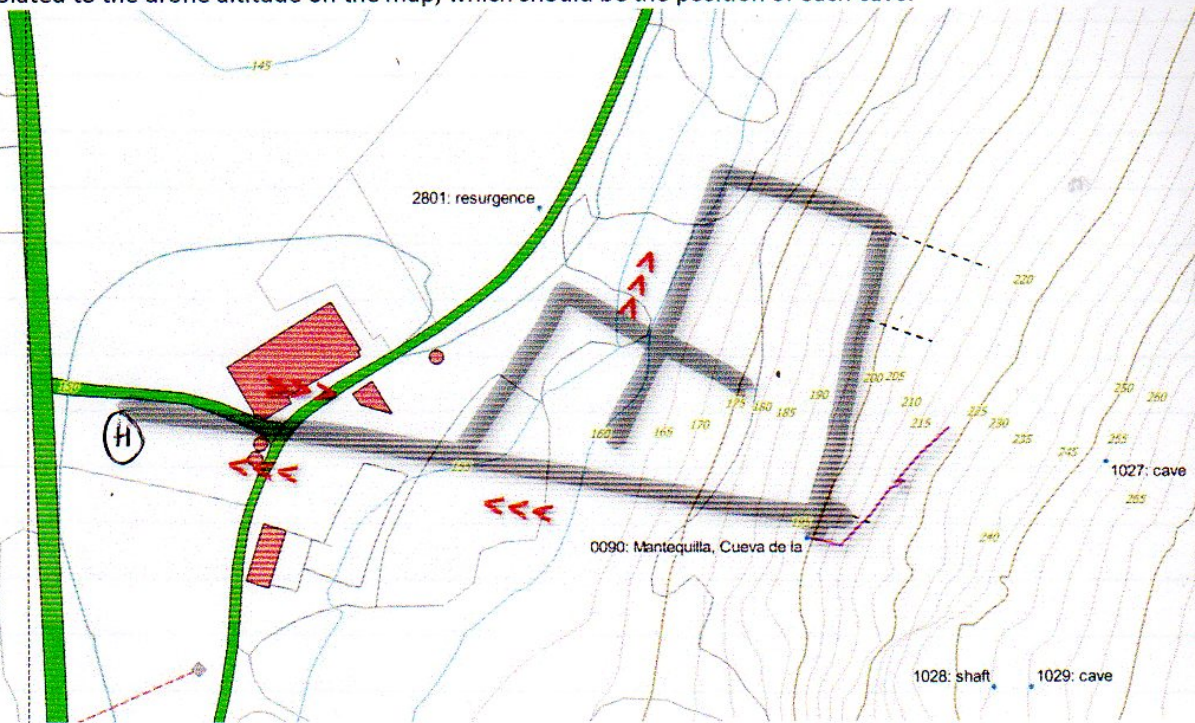
We ended up spending all our time in the entrance series - lots of spiders of interest including possibly more *Ibimamaziatreae*. Many other species abundant. Spot collected some isopods, spiders, beetles, and centipedes.





Monday April 29<sup>th</sup> 2019

Juan droning to find entrance positions for sites 4946, 4947 and 4948. Sent drone up from track around to Ian's house. Flew close to each entrance at the apparent altitude of each. See video. The drone track below can be extrapolated to the drone altitude on the map, which should be the position of each cave.



Site 4946 altitude is 213m; position is 30T 452759,4796914

Site 4947 altitude is 210m; position is 30T 452741,4796892

Site 4948 altitude is 212m; position is 30T 452724,4796845

Positions will be approximate – but better than nothing.

29-4-19 <sup>0730</sup> Corcoda - Patrick + Sandrine Degouve, G. Simonnot, Pete S.  
Visit with S.C. Dixon cavers who are pursuing the active series in this cave. Lots of 'straws' were used to make progress below the last pitch. The meander continues small. The cave was left rigged (except for the entrance).

Cueva de los Palomas

4004 28/4/19 Peter S + Phil P

Surveyed this known cave. Lots of ~~the~~ Bats in cave would be a good site for Jess to set a detector. Photos taken.

4927 28/4/19 Peter S + Phil P - checked site, no lead or dip - worth any real work. Survey & Photos

4949 <sup>28/4/19</sup> Small hole (crawl) under thin limestone bed, found on way to 4004

ESP



1/5/19 4805 m.a. - Terry, Peter S + Phil P  
 Terry drove 8 scaffold poles + clips + Boats up to  
 end of Mushroomfield & we connect to dig & put  
 poles together with clips as a cover etc. All set for  
 digging + showing in Summer.

## Matienzo Easter 2019

Jess Eades, Martyn Grayson, Dan Hibberts and Bob Grimes

**18/04/2019** - Dan and Bob headed into **Torca la Vaca (2889)** via **BigMat Calf Hole (3916)** with Jason Cardwell and Mark Edwards.

JEa and MG afternoon walk on the hillside to find the entrance of **0714**. Cloud base came down, reducing visibility to around 5m so a steady retreat back down the valley before dark was made. Did not find 0714 entrance on this trip.

**19/04/2019** - JEa, MG, Dan Hibberts and Bob Grimes headed into **Renada (0048)** via the top entrance (**4221**).

Aim of trip was to bolt up Zeppelin Hangers and push any on-going passage. All kit carried into cave. This was first trip into 0048 for everyone, except Dan. A roof tube was found just off the T-Junction before Zeppelin hangers. This didn't appear on the existing survey, so a collective effort to launch Bob Grimes up the difficult start of the climb was successful in getting him into the ascending tube. A hand line was installed via a stal boss on the floor of the passage to help others ascend the start of the climb. The tube continued a short way and closed down with a vertical ascending tube, which did not lead to on-going passage. The hand line was left in-situ, but should be used with caution as it was attempted to be removed from the base of the climb after it had been explored. It may not be secure on the boss any longer.

All the team then went on to Zeppelin Hangers to have to look and weigh up the job of the bolt climb. Dan and Bob started the climb, bolting along the way, whilst JEa and MG back tracked up the passage to calibrate the disto and survey the new aven from a known station. Following that, they then, progressed forward to another known survey station nearer to Zeppelin Hangers to continue the survey beyond its last surveyed limit. When the surveyors approached Zeppelin Hangers, they could hear the climbers still ascending, so continued on along the passage below the climb, reaching a large chamber with multiple apparent ways on. The dry sandy narrow sloping passage along the right hand wall was chosen as the way to continue. A voice connection could be heard from the climbers above, by the surveyors when in the centre of the large chamber.

On this trip, Bob managed to lose his top dentures whilst at the bottom of Zeppelin Hangers. They fell down a small hole and dropped out of eye sight. The hole was too small to descend but attempts were made to locate the base of the hole to see if they "popped out the bottom". Sadly they couldn't be found, so a retreat to the bar was made.

**20/04/2019** - JEa, MG, Dan Hibberts and Bob Grimes headed back into **Renada (0048)** via the top entrance (**4221**). The team headed straight to Zeppelin Hangers installing a few handlines along the way to increase protection in a few places. DH and Bob Grimes continued the Zeppelin Hanger climb, whilst JEa and MG continued to survey progressing the passage from the large chamber [SURVEY STATION NUMBER 1.12] down the sandy passage at the base of the right hand wall. This passage descended down a sandy slope, and then met large boulders splitting into two passageways (one leading up, with the other leading down and round to the right). The two passages loop around over the top of one another. Both were explored to their end with passage ways narrowing down and closed off with mud. Upon returning to the large chamber, we were met by Dan. The Zeppelin Hanger passage had come over the top of the large chamber, and he had descended a pot. He swung in through a window, into a large chamber, which turned out to be the chamber with our survey markers already in. The rope was left in-situ to allow the survey of Zeppelin hangers, and the subsequent de-rig after it has been surveyed.



(N of "Cagigas de Hornedo")

**21/04/2019** - Surface day in new area (JEa, MG, Dan Hibberts and Bob Grimes) - walked wooded area and previously clear felled (but now bramble thicket area) to West of Hazas de Cesto near Santa Eulalia. No caves found, but limestone outcrops explored within the wooded area. Team then moved north and parked up on the CA-266 on a gravel area before the switch backs near the motorway bridge. The area west of the gravel car park area was checked following a dry stream bed upstream. No cave found.

**22/04/2019** - JEa, MG, Dan Hibberts and Bob Grimes headed back into **Renada (0048)** via the top entrance (**4221**). JEa and MG headed straight to the larger chamber [SURVEY STATION NUMBER 1.12] and continued to survey the extent of the large chamber. It's a little like swiss cheese, with avens and pots and gaps between boulders so half the time was sent exploring and the other half surveying. Bob Grimes dropped the pitch [SURVEY STATION NUMBER 1.28] and disappeared for a long while. There are multiple other pitches off down this section. Upon Bob's return, he and Dan Hibberts went back towards the entrance to bolt and climb the slope up near [SURVEY STATION NUMBER 1.2]. The slope has a large hanging boulder wedged in the passage, with passageway appearing to lead off near the roof.

**23/04/2019** - JEa, MG, DH and Bob headed over to the new area to have a surface walk of areas along the road between Solórzano and the motorway bridge in the morning. No caves found. JEa, MG had a rest day checking out local wildlife areas. Bob stayed around the valley, with DH having a surface day with Juan Corrin. In the afternoon JEa and MG went to **0880** (Two and a half fat ladies) and Carmen's new cave in the new area, where bats had been reported earlier this week, to see if a positive species ID could be made. Sadly no bats found in either cave, although samples of droppings collected, for potential future DNA analysis. A trip to **Renada (0048)** via the top entrance (**4221**) was made to photograph the horseshoe bat which had been seen in the daylight zone on all other survey visits. Upon arrival, the bat had moved, but a short look around revealed 4 bats of 3 species (lesser horseshoe, greater horseshoe, natterer's bat) all within the first 15m of the cave entrance. Photographs taken by JEa.

**24/04/2019** - Surface day. Dan, Bob, JEa and MG went to [site **4894**] equipped with a generator, submersible pump and a length of run-flat hose to attempt to pump out the entrance. Kit set up, with a small dam created to prevent water back flowing into the resurgence. Water receded quickly creating a dry stream bed up to the mouth of the resurgence. A few calls later and the team were accompanied by Phil, Carmen, Pete, Patrick who brought another length of run-flat hose to help progress the pump. Pump ran for approximately 4-5hrs reducing the water volume in the resurgence and opening up a small space, but not sufficient to allow progression and exploration into the cave. The way straight on appears to close down almost immediately, but a deeper section leads around to the left with a boulder currently blocking potential on-going passage. This could be moved by a surface team if pumped out again, or a diver installing a sling around it, with a team pulling from the surface. This needs a diver to go check out further prospects.

Whilst the pump was running, various people walked the hillside prospecting for cave. Farmer is very helpful and pointed out a number of places. JEa photographed and surveyed site **4892** whilst MG, Carmen and Pete (and possible others) walked the nearby hillside.

**Site 4892** closes down after 4m to a tight rift. Local farmer said that at times of heavy rain, the water pumps out of this resurgence, flowing down the field and track and floods out the car park area. When the water emits from this resurgence, the water also pumps out of **4894** which was being pumped.

Dan and Bob left to catch the ferry back home later this day.



25/04/2019 – JEa, MG and two Wessex cavers (Nick and Sam) entered **Renada (0048)** via the top entrance (4221). We showed them the bats found the day before. All still present in the same locations, but a fourth bat species (species unconfirmed) was also seen in close proximity. Steady trip to show Nick and Sam the cave. Headed towards Zeppelin Hanger area to continue survey. MG ascended ropes to check pitch head down into main chamber. Decided more bolts needed to be installed to make safe prior to survey. Moved over to main chamber [SURVEY STATION NUMBER 1.12] beyond Zeppelin Hanger and checked out down pitch [SURVEY STATION NUMBER 1.28] identified on previous trip. This needs a dedicated trip to bolt and progress the survey as rather complicated. A brief detour up the slope bolted [north and up slope of SURVEY STATION NUMBER 1.2] by Dan and Bob on the earlier trip. Y-hang installed at the top, and rope re-directed to reduce rub points. MG dug through at the top of the pitch into a small chamber with a window leading to a pot and aven. Water could be heard beyond this. Draughting. JEa climbed up above the pitch head but found that the passage way closed down to a tight rift leading up, likely to connect to the MG aven found. This area also needs to be surveyed. Very large chamber with multiple avens leading off the steep slope. Nick and Sam had started to get cold, so we made our way back out.

26/04/2019 – JEa and MG afternoon walk up the hillside to surface prospect. Re-found entrance to **1238** (Shaft) which we had photographed at Christmas 2018. Natural rock backup with bolt installed to allow SRT descent down the fluted water-worn shaft (8m). Boulders were removed from the dig at the bottom and passage opened up to allow access to a short crawling slope (descending) leading to another short pitch (approx 2m). No further obvious ways on. The crawling slope is in-fill from above and undercut with boulders which lead back up to the main chamber. Calcite stal and alcove terminate horizontal progression. Floor of final pitch is small rocks with mud in-fill. Some probing didn't identify a way on. Water appears to soak away in the calcite alcove area.  
Cave photographed and surveyed by JEa on way out.

6/5/19 Drone flight from the road up to the entrance of Concebo #0012. Nothing new spotted.

From: Phil Papard <papard@easynet.co.uk>  
To: 'Juan Corrin' <uzueka@aol.com>  
Cc: 'John Southworth' <direct.station.limited@hotmail.co.uk>  
Subject: RE: Matienzo Easter 2019  
Date: Thu, May 9, 2019 2:57 pm

Juan

The blockage at sump two in Fuente Aguanaz has been removed and Mark and Jim are going in tomorrow to survey etc. We will leave the radio location until the summer given the lost days. Also Mark has an infection possibly from the cave and has been to the Doctors today – hence the delay.

Phil



## Cavers from Madrid

### PARTICIPANTES:

Angel San Juan (Piezo), Abel Arroyo, Miguel A. Molleja-Miki (Katiuskas), Roberto Lumbreras (Katiuskas), Antonio Barragán (Piezo), Silvia Cerrada (Piezo)

### 2 de Marzo de 2019

El sábado se formaron dos grupos:

#### Grupo de equipación del pozo

Formado por Rober, Miki y Antonio, previsto realizar la equipación del pozo y comprobar la profundidad del mismo.

#### Grupo de topografía y exploración:

Formado por Abel, Angel y Silvia, prevista la topografía y exploración de la Spanish flea.

**SPANISH FLEA:** (30T 30 T 452474 4793681 ETRS 89) **SITE NUMBER 4951**

Bajada limpia en rápel (10 m) desde un árbol hasta una repisa, desde aquí una rampa descendente hasta una estrechez en la que a la derecha se encuentra un pozo de unos 4 m, equipado en rápel, se desciende el pequeño pozo no encontrando continuidad en la cueva. En esa misma estrechez, hacia la izquierda antes de bajar el pozo hemos realizado una trepada de unos 4 metros, se llega a una repisa. A la izquierda de esa repisa existe una estrechez por la que se cruza hasta una abertura, en la que no hay salida.



**"Zona de desobstrucción al lado de la Spanish flea"** (30 T 452482 4793685 ETRS 89):

4952

Durante la exploración se han podido quitar algunos pequeños bloques que taponaban la posible entrada. También existen grandes bloques que deben de ser quitados para permitir la entrada, actualmente al menos 3 de ellos se mueven, pero es necesario soporte mecánico para poder desencajarlos. Cercano a la boca de entrada se puede notar corriente de aire. La zona actualmente es la parte baja de una dolina en la que las piedras, suciedad y animales caen quedando retenidos debido a la fuerte pendiente.





**822-** (30 T 452482 4793685 ETRS 89):

Se ha realizado una visual exterior por la entrada, explorada sin continuación, actualmente está indicada en la página como unexplorer. La descripción es buena y no tiene más que resaltar.



**823-** (30 T 452658 4793974 ETRS 89):

Se ha realizado una visual exterior por la entrada, explorada sin continuación, actualmente está indicada en la página como unexplorer. La descripción es buena y no tiene más que resaltar.



**4710-** (30 T 452628 4794074 ETRS 89):

Las coordenadas indicadas no nos concuerdan con ninguna boca. Actualmente se han tomado las siguientes coordenadas. 30 T 452628 4794074. Esta boca se encuentra al lado del camino, con dos aberturas, actualmente tapadas por la altura de la hierba y los matorros, hay que tener cuidado si se pasea por el alrededor, es fácil caer dentro. Reja en tierra.





**824** (30 T 452644 4794103 ETRS 89):

Entrada en el suelo (embudo) de unos 4 metros de diámetro, no hemos descendido, calculamos que habrá un rápel de unos 10 metros (no se sabe si hay continuidad). Pendiente de explorar.



Normenglatura de las simas (archivos GPX y tabla):

solo número de sima: Sima que no revisamos por que los ingleses la ponen como explorada.

número + R: Revisada y no continua.

número + E: En exploración.

número + mirar: pues eso... mirar.

enlace de my maps: <https://drive.google.com/open?id=1aA6LxzP9aSiX7Xy2Ch0W2W9u0IXAogus&usp=sharing>

#	sima	coordenadas	altura	datum	descripción	desnivel	última reseña	nota
1	SPANISH FLEA	30 T 452474 4793681 4951	448m	ETRS 89	Pozo de gran diámetro que acaba en un meandro con dos pequeños pozos mas. Se escala un meandro a la izquierda, antes del último resalte, de unos 6 m que da paso a una pequeña sala. En el lado derecho hay una marca de plástico naranja pero no se ve el número de identificación de otros exploradores.	-22m	3/3/19	hay que dar número Matienzo Caves
2	7 simas	30 T 452571 4794050	518m				23/08/2018	hay que dar número Matienzo Caves
3	DESOSTRUCCIÓN	30 T 452482 4793685 4952	440m	ETRS 89	Muy cercana a la anterior. El embudo de una gran dolina acaba en el lateral, frente a una pared de unos 10m. Hay unos bloques que dejan ver un hueco, dónde no se observa corriente de aire. Se retiran varias piedras de grandes dimensiones y se ve hueco. Sería necesario desobstruir con la ayuda de un tractel.		3/3/19	hay que dar número Matienzo Caves
4	Final Primer piso	30 T 452476 4793802 4953	590m	ETRS 89	Final del piso superior de Codisera (dirección sur): Encontramos una dolina con un pequeño agujero en el centro cubierto de hojas, muy posiblemente la entrada de dichas hojas a el final de la topografía de dicha galería, impenetrable. Cueva localizada gracias a las coordenadas obtenidas con la topografía de Codisera.		11/11/2018	hay que dar número Matienzo Caves
5	0822	30 T 452482 4793685	485m	ETRS 89	Explorada sin continuación.		3/3/19	cambar letra "u" en mapa Matienzo Caves
6	0823	30 T 452658 4793974	480m	ETRS 89	Explorada sin continuación.		3/3/19	cambar letra "u" en mapa Matienzo Caves
7	0824	30 T 452644 4794103	497m	ETRS 89	Sin revisar. Entrada en el suelo (embudo) de unos 4 metros de diámetro, no hemos descendido, calculamos que habrá un rápel de unos 10 metros (no se sabe si hay continuidad). Pendiente de explorar.		3/3/19	
8	2551	30 T 452665 4794321	490m	ETRS 89	Pequeño agujero impenetrable.		11/11/2018	cambar letra "u" en mapa Matienzo Caves
9	2552	30 T 452733 4794468	450m	ETRS 89	No se ve posibilidad de continuación.		11/11/2018	cambar letra "u" en mapa Matienzo Caves
10	35377	30 T 452541 4794253	551m	ETRS 89	Creemos que son las coordenadas correctas de la 3537. Coincide la descripción inglesa.		11/11/2018	Cambiar las coordenadas en Matienzo Caves
11	47107	30 T 452628 4794074	493m	ETRS 89	Sin revisar, solo actualizadas las coordenadas.		3/3/19	

?

18/4/19 Tourist trip into Píon #0005. Photos taken.  
Alex R. + John P. + Chris Shorman.



Site 713 (Aguanaaz): Jim Lister, Mark Smith

3<sup>rd</sup> May 2019 Both dived Sump S6 to survey and explore passage beyond at sump pool level plus ascertain height of aven.

Jim, like most men, tends to exaggerate the size of things. It is 90m aven turned out to be a more acceptable 40m. The top looks promising. Swam across the Sump pool leads to a streamway that was followed upstream. Nicely decorated passage (walking size) led to a duck on the left which opened up into more walking passage. A junction with two streams was met and we followed the right hand branch. A few obvious side passages were noted and the main passage was followed until it became a flat out crawl. Passage was surveyed (PDA failed) so we left.

Site 713 (Aguanaaz): Jim Lister, Mark Smith

5<sup>th</sup> May 2019 Return to survey (again) the passageway using Phil's working PDA. Surveyed from Sump guideline and followed previous route, only to find out it did not end so we carried on. Passageway was low, wide, gravel floored but changed to square shape and then became a flat out crawl through sewage. Passageway then became walking sized, again nicely decorated. A deep pool 90° left led to breakdown in fragile rock that crumbled easily. Climb up through led to a cascade breaking through into chamber / passage. This was followed until boulder choke. Climb up through choke leads to almost man sized gap with roof seen 10-15ft above (not Jim's estimate!). Hole could easily be widened but they are supporting boulders so care will be needed.

Jim vaporised a boulder on the way out, knocking the wind out of him, much to relief of MS. On way out had a quick look at the left hand passage found on 3<sup>rd</sup> May. (station 75). Streamway ends in duck / Sump. Above still going.



5 May 19, Site 1265

Started digging in the "continuing tight passage", slicing mud and moonmilk off the walls with a shovel. A hammer and chisel will be needed in the future to remove harder calcite. Intermittent draught. PS

7 May 2019, Peter Smith, Philip and Hilary Papard – San Antonio area above far end of Sarah Jean inlet in Fuente Aguanaz.

Checked area where SubPhone location above aven is likely to be. There is a dense eucalyptus area adjacent to pasture land, but location looks to be reasonable, only problem is Friesian bull in field with heffers!. After talking to a farmer who reported some shafts being filled in and changed to water flows with a resurgence (2831) not following much now. We then looked at site 2831 and noted sink below resurgence was draughting well and is well worth further work. We then looked at various sites in the area:

4458 found following description, but location given seems to be in the big shakehole filled with rubbish and not the smaller one to west – new location (445396,4800312 alt 211m (map does not seem to show ground level due to tree cover) and photo taken, site is a very long term dig but no draught noted today.

4951 Dig (445759,4800636 alt 154m) – Rock face to north of an area where eucalyptus trees have been planted. At a small rock face that looked promising no hole of clear dig site was found, but to the right is a possible dig that has a slight draught.

<sup>4956</sup>  
~~4952~~ Daisy Hole (445796,4800670 alt 143m) – in same area as <sup>4954</sup>~~4951~~ but lower on same side of this large Gully/Depression is a shakehole filled with daisies and with a boulder floor. Need better oversight and time to clear brambles to check out this site and possible dig/hole next to rock face.

<sup>4957</sup>  
~~4953~~ Tyre Hole (445633,4800559 alt 168m) is the western depression of two shown at the end of Sara Jean passage found in 2018, Site is an elongated depression with a mud floor used by cattle and today a muddy pool. Just above against a 1m rock face is a hole filled with tyres and holes below but no draught. Later John Southworth's team removed the tyres and found there was a drop of a couple of meters but a rock needs removing to get access.

12 May 2019 – Phil Papard – walk above Risco Via Ferrata

After climbing the Via Ferrata Took route up valley and then up and over La Colina and back to top of waterfall via the valley route. Two new caves found, and one old cave located and ent picture taken.

<sup>4958</sup>  
4955 Cave, 453511,4796303 Alt 410m Hole on north side of valley above waterfall. Hole is about 25cm in diameter and goes in at least 2m and seems bigger further in. Not explored but will be an easy dig to check if any potential, no draught noted on a warm (18deg) day. Photo of ent.

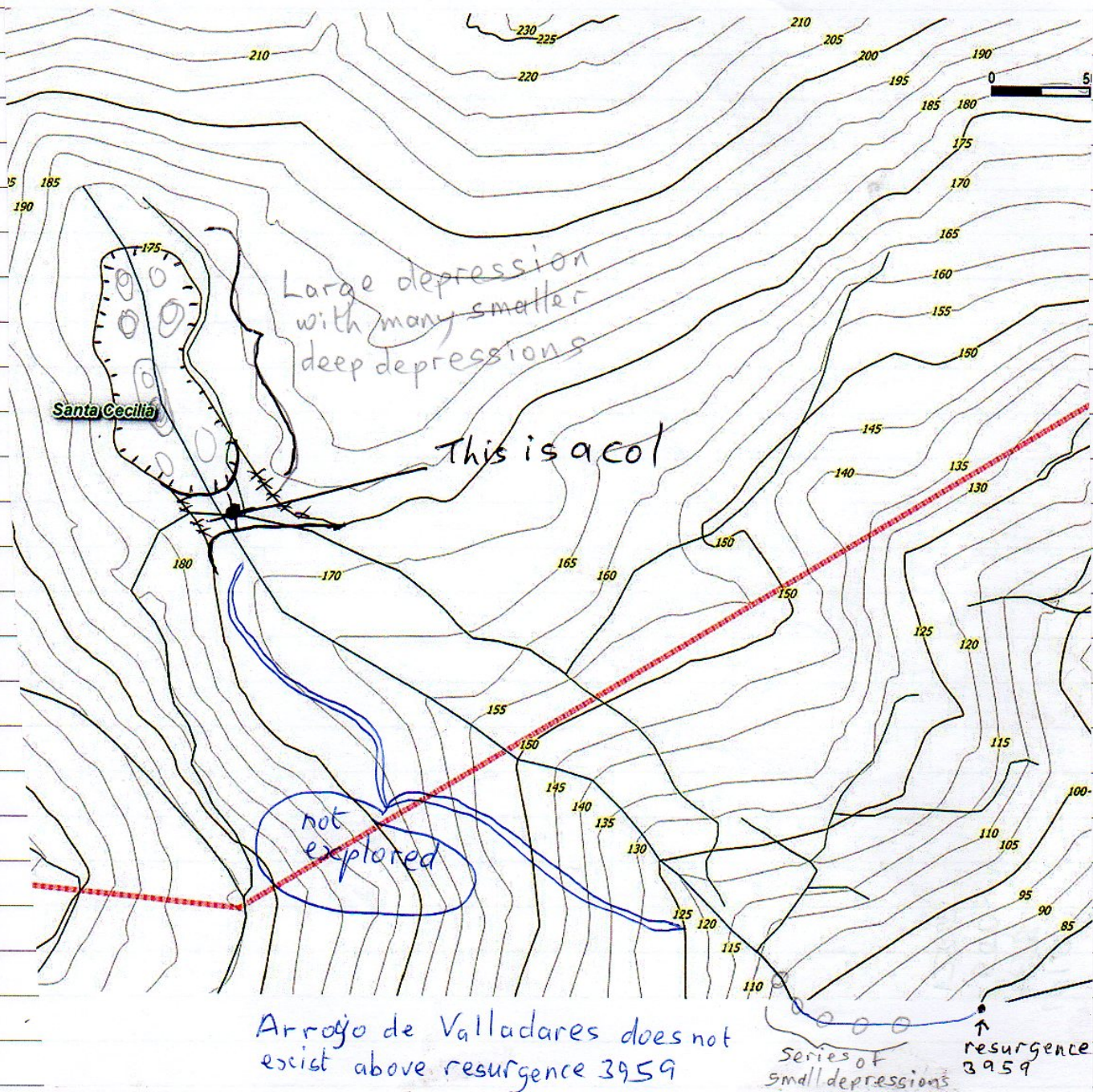
<sup>4959</sup> <sup>1557</sup>  
~~4956~~ False Floor Cave, 453230,4796373 Alt 527 Old cave in cliff face divided by false floor. Can see it goes for at least 4m, but not explored. Photos. ~~Cave will be B&B Carthage find from~~ <sup>2000.</sup>

1010 – Cave I assume is 1010 but not in exact location. New Location ~~453230,4796373 Alt 491m,~~  
Photo 0453462 4796754 ↑492



# Surface features alteration above site 3959

61





Alterations to two numbers (4957 --> 4967 and 4958 --> 4968) - please use this report. JSC 26/5/19

## **MATIENZO REPORT – 28<sup>th</sup> April to 12<sup>th</sup> May, 2019**

John Southworth (JS), Phil Goodwin (PG) & Dave Milner (DM)

### **28/04/19 Navajeda**

**Site A - 4967** – JS & DM 0443557 4801271 alt 62 Length/depth 3m

Entrance in small outcrop behind houses. 3m sloping descent into small chamber on left.

No obvious way on. Photo DM

**Site B - 4968** – JS 0443621 4901207 alt 77 Length 7m

Entrance crawl for 2m to cross rift. Left branch chokes. Right branch extends 2m to bend, continuing very low. Photo JS

**Site C - 4959** – PG 0443624 4800828 alt 94 Length 2m

Scoop under low cliff with small passage going off. Photo PG

**Site 4460** – JS, PG & DM

Brief look in entrance. Disappointed to see rubbish accumulating.

### **29/04/19 Moncobe**

**Site 3029** – JS, PG & DM

Length 2m

Enlarged drop at end of cave to reveal small passage. Too much work required to continue.

### **30/04/19 Alisas**

**Site 4763** – PG & DM

Depth 7m

4m ladder descent to boulders, with further 2m climb down behind ladder. Opposite side has climb down of 3m to floor. No ways on. Photo PG

**Site 2269** – JS, PG & DM

Significant change in vegetation levels since previous report. Photo PG

Visited large depression to south of site 2270 which has small stream sinking at base. Possible dye test location in wet conditions. *Over the hill - site 4955*

### **01/05/19 Garzon**

**Site A - 4960** – JS, PG & DM

0450615 4803621

alt 222

Length 15m

Walk in passage, 8m long by 3m wide, to chamber with dimensions of 11m wide, 7m long & 3m high. Very low passage on right at end of chamber. No draught. Photo JS

**Site B - 4961** – PG & DM

0450564 4803574

alt 236

Depth 3m

Halfway down depression, under rock face on west side, is sloping drop down which rocks trundle some way. Needs entrance section enlarging. Photo PG

**Site C - 4962** – PG

0450551 4803649

alt 232

Depth 2m

Round depression with rock on most sides, has small hole on one side. Takes water in wet conditions. No easy access. Photo PG

**Site D - 4963** – PG

0450747 4803683

alt 173

Length 2m

At one end of a very large depression is a sloping bedding under rock face. Very narrow. Photo PG

**Site E - 4964** – JS, PG & DM

0450790 4803644

alt 174

Depth 4m

Slabbed over shaft at edge of track. Undescended as needs enlarging at top.

**Site 4861** – Unable to locate. *Could be 4961.*

Supposed stream near 4861 does not exist. In reality the water course marked on the map is a very large depression which has a track on the banking on the supposed 'downstream' end.

### **02/05/19 Camposdelante**

**Site 4550** – PG & DM

New location reading 0447128 4799164 alt 282 Length 7m, depth 3m



2m drop to boulder floor in rift. 1m down slope has no way on. At approx 1m above floor is higher continuation of rift. Way into this higher section is partially blocked by rocks, but the continues for approx 6m.

**Site 4574** – JS, PG & DM

Depth 9m, length 6m

Slab stopping previous progress now removed to give a 7m pitch into a rift. Down a slot in the floor near start of rift rocks fall some distance. The rift continues for approx 6m, but access is stopped by 3 pinchpoints which need enlarging. Slight draught. Photo PG

03/05/19 Rest day

04/05/19 Garzon/Solorzano

JS & DM Jungle bashing, with nothing found

05/05/19 Solorzano

**Site A - 4965** - JS & DM

0453392 4803587 Alt 168

Length 2m

Depression with small rift feature at base, partially choked by brash, but has slight draught. Photo JS

Up side of same depression is short, narrow, phreatic tube too narrow to enter.

OUT OF AREA – Anero

**Site B – X13** – JS & DM

0447757 4803587

alt 82 Length 40m

X013 Fuente which feeds Rio Sobarzo at Villanueva. Large, open entrance adjoining dammed water outlet. Dry, walking passage extends for 30m with chamber/aven part way along. At point water/canal is met – estimated as thigh/waist deep. Canal has been traversed for 10m until ledges ran out. Way on in water open. Photo JS

06/05/19 Alisas

**Site 4772** – PG & DM

Continued enlarging shaft in corner of open hole. More work required.

07/05/19 Moncobe/Barrio de Arriba

**Site A - 4966** – JS, PG & DM

0445822 4798019

alt 148

Depth 1m

Dig on edge of large, shallow depression in edge of woodland. Entrance banking has collapsed into hole making work a longer term undertaking.

08/05/19 Garzon & Navajeda areas

JS, PG & DM. Walking in both above areas – nothing noted.

09/05/19 Garzon

JS, PG & DM – Familiarisation walk in new area – nothing noted

10/05/19 – Riano

**Site 3234** – JS, PG & DM

Length 3m

Digging in side passage 20m on right past "The Hub". 3m of clay and stones excavated. Passage appears to be narrowing ahead. No draught

11/05/19 – Moncobe

**Site A - 7<sup>th</sup> May** - JS, PG & DM

4966

Returned to try and stabilize bankings and make stockproof. Still blocked below.

12/05/19 – Anero

JS, PG & DM – Looking for possible resurgence locations to north of new Garzon area.

X002 → 4969

(Now in area)



25/5/19  
Hello John

On Saturday I was with my friend Emilio, who's an archaeologist but has been all over Cantabria looking for caves. He'd heard about the resurgence cave at Villanueva but didn't think any caving club had explored it. He showed me a small cave near Injanas 2 (site 4444) that isn't on the orux map. Here's a photo of the entrance. How could we miss that? The coordinates are 442474 4804812.

Cheers,  
Pete

4970

Hi Pete

Your GPS for the entrance of the cave next to Injanas 2 puts it about 55m away, like you commented, how can we miss that. Maybe it could facilitate access beyond the passage tagged, small hole through water, in Injanas 2 and the nearby sink 4446, how does it end etc? .

Will your friend Emilio mention the cave we found at Villanueva to other cavers or will we have the privilege of maybe being the first to explore it, if we obtain that area next year.

Cheers  
John.

X013

**Site 713 3<sup>rd</sup> May 2019 Mark Smith, Jim Lister**

First day of Easter 2019 trip, diving and surveying equipment was transported in, this was made considerably easier and safer, thanks to the work undertaken to the entrance pitch by Big Steve Martin and Pete Smith!

An electron ladder was fitted to the 3 meter climb out of the water at the Portage using one of Phil's stainless anchors, the team then proceeded upstream to SJ passage and along to sump 5B

Mark dived sump 5B first so that he could get some visibility to carry out a sump survey, Jim to follow with the kit as he had dived the sump before.

The divers meet up at the far side of the sump and Mark's regulator was repaired. He had dealt well with a valve failure half way through an intimidating sump. The divers then headed up the steep climb up to "GH" Aven, a Distox reading was taken. Because of a curve, a reading had to be taken off the wall which was only 43 meters which disappointed Mark but following a bolting trip later in the week the Aven can be seen still ascending steeply. The aven is 6 meters diameter.

Attention was then turned to the inlet passage at the far end of the sump pool. Jim had seen it on his last trip but had left it till Mark was there as he believed it to be the honourable thing to do. This passage was a couple of meters wide and had a gravel floor and a stream emitting from it.

The passage was followed, it meandered along, stalagmites suspended from the ceiling, some areas being very well decorated. The passage then split and the right hand inlet was followed. (This junction is called "75" after the station number. The passage continued - the rock changing and becoming more eroded. A few deep pools were encountered and passed until a tight vertical slot was reached this was best passed by lifting your legs up and floating through on your side. The passage was then followed for some distance until it changed to a hands and knee crawl.

The cave was then surveyed from this point heading out, unfortunately the "Sexytopo" crashed so a number of surveys were done and linked down to the junction at point "75". *Report by Jim Lister.*

**Site 713 5<sup>th</sup> May 2019 Present: Mark Smith, Jim Lister.**

The passage leading off to the left (going up stream) at station "75", was followed. This is the main streamway; the water coming in on the right hand passage is an inlet which was explored on the 3rd of May.

The passage starts off wide with a good ankle to knee deep stream running over a gravel floor. It then divides at a further junction, the right hand side was followed becoming shoulder width wide but higher. The rock was light grey in colour and had a rough, wetsuit abrading surface. The stream was running beneath down a tight slot out of sight. The passage then became wider and straighter with right angle bends. It gave a good echo and we expected it to sump but it did not, continuing for what felt a long time until a cascade could be heard in the distance. This was eventually reached but the way on was barred by a band of sharp and brittle, dark brown rock which filled the passage almost completely!

It looked like the end but Jim was able to climb up the sides of the passage which was 9m(?) high. Using a rock, he was able to knock off enough of the brittle rock to squeeze through. After an unpleasant climb down the other side, he found a chamber with a cascade tumbling down the left hand wall. This was again



climbed up the horrible brown rock to an ongoing stream way with a big void above. Jim returned to Mark who managed to find a bigger route through and they climbed the cascade and entered the void which was a present wide walking passage of good proportions! This was followed until it ended in a boulder choke just after an elbow.

Mark examined the choke and found a gap going into large continuing passage but the gap was too small to enable access. However, a small number of caps should do the job on a return visit.

On the way out, Jim fell as the foothold he was using failed and he fell on his back winding himself. No major damage was done but it's a warning that the dark rock is lethal. *Report Jim Lister*

**Site 713      7th May      Mark Smith, Jim Lister**

Mark and Jim transported rope equipment and drill as far as the choke just before sump 3 in SJ passage. Mark was feeling not at his best so work was carried out on the choke to improve access and security. The area was cleared of loose boulders and rubble. *Report Jim Lister*

**Site 713      8<sup>th</sup> May 2019      Present: Jim Lister**

Jim undertook a solo trip to take a 2m long scaffolding pole to the choke to pry some of the loose boulders out and move them to a safe position. Several other boulders were capped and moved to improve access and stability.

The chamber above the choke was entered and the blocked passage to the area above the sump pool was opened up. This gives a bypass to the crawl through the low airspace. The scaffolding pole was then installed in the choke to secure a large block. *Report Jim Lister*

**Site 713      10<sup>th</sup> May      Present: Mark Smith, Jim Lister**

Mark joined Jim and they transported the climbing equipment to GH Aven, where Jim bolted up 17m to a 2ft wide ledge, where a permanent traverse line was installed, giving access to a suitable rigging point to install a free hanging permanent rope, whilst Mark went on a reconnaissance back up the streamway. *Report Jim Lister*

**Site 713      12<sup>th</sup> May 2019      Present: Mark Smith, Jim Lister**

The team turned left just before "75" inlet and followed the water. The passage gets wide before going back to its average dimensions. A sandy crawl was passed on the right which is not surveyed but goes after a short distance to a aven which is well decorated although looking up there is no obvious way on. However, the bottom of the aven 4 meters below may have?

Continuing along the main passage it splits into two the left hand passage continues unexplored but looks promising. The right hand passage narrows and becomes taller before widening again. A further junction is met with two passages leading off - the passage at floor level is a hands and knees crawl to low air space; the passage above is an awkward 2m climb to a sandy floored walking/ stooping passage.

The passage lowered and widened out and, just past some large diameter stals, a climb down lead to a hands and knees crawl through thick and smelly sludge, "The Sewer". This ends at a reasonable sized walking stream way, with both a down stream passage to the right and a upstream passage to the left. The right hand passage soon widens and lowers to a flooded passage with very limited air space and is believed to join the simpler passage mentioned earlier. The right hand passage continues for some distance eventually going through a duck and then, 10 minutes later, ending in a body-sized sump.

On the way out Jim climbed up the left hand side of the chamber and dug enough sand out to gain access to a good sized chamber. The far left hand side has an aven which has water falling down it from an impenetrable slot. Mark dug his way in and they both explored the chamber which had no way on. However, the far end does have a interesting 3m wide bedding with a sand floor and roof that disappears into the distance. Sadly, the 20cm height stopped any progress but it looks like a promising dig?



From: Peter Smith <smith\_peter2004@yahoo.es>  
To: Juan Corin <uzueka@aol.com>; John Southworth  
<direct.station.limited@hotmail.co.uk>

Subject: Re: Matienzo question  
Date: Sun, Jun 2, 2019 10:47 am

Attachments: Picardos scan.jpg (179K)

Hello John and Juan

Cave 4970 is called Los Picardos (or Injanas III). Small survey attached (from the Miera archaeology book).

It gets low, I could only just get round the first corner, but the floor is sandy and easy to dig out.

Cheers

Pete

4970

#### 104. Cueva de Los Picardos o Las Injanas III

1. El Bosque. Entrambasaguas. Altura: 65 m.

Situada en la ladera de un cerro testigo, en posición dominante. Presenta buenas condiciones de habitabilidad.

2. Pequeña cavidad parcialmente colmatada por relleno sedimentario. Tiene una entrada de 1 m de altura orientada al noreste. Da acceso a un vestíbulo de 9 m de longitud por 3 m de anchura. La cavidad gira hacia la izquierda y a los 5 m hacia la derecha, hasta volverse impracticable.

3. Mesolítico. Hábitat.  
Calcolítico - Bronce. Sepulcral (?).

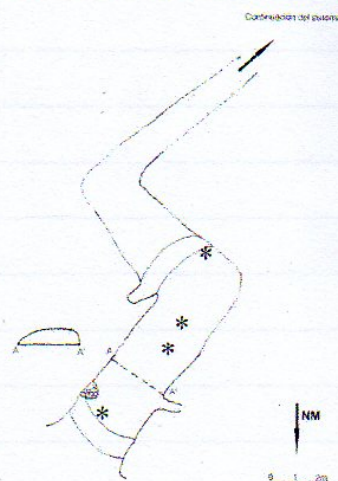


Fig. 5.1. 132. Cueva de Los Picardos

Matienzo April 2019. Richard Bendall, Chris Camm, Nigel Easton, Phil Parker

**Thursday 11th** Cold, damp weather for a tour around the permit area to show Richard the general lie of the land. Various stops inspired by Richard's calls of "Another hole there!" or "What's just up there?" lead to his first find, a hole (**4876**) under a small cliff in woods above a road in the La Gatuna area.

*Probably site 4898 → 4906*

**Friday 12th** All returned to the vicinity of **4876** and several more holes were located. Three were in the woodland area at the base of a cliff, one appearing to be something to do with water collection. One had two entrances thus allowing a through trip above the blind hole in the bottom of the passage. On the open bench above the wood there were 5 shafts, four being blind with depths between two and four metres, the last dropped into a 7m long by 4m high rift feature, blocked at the end by calcite. Finally, a little further north, at the upper edge of a field, at its junction with woodland, there was a small resurgence cave. Some excavation was carried out in the initial low section but this quickly turned into a quagmire and was abandoned.

**Saturday 13th** Nige and I headed into **4474** to push the end of the big passage whilst Chris took Richard to the **4137** capping project.

In **4474** the draughting route through boulders was opened up allowing access to a continuation of dropped block chaos. Way on found through a chest height hole into a chamber on the left side of the main passage. Onward led to a junction, ahead being a 3m wide passage with mud banks which soon rose up to the roof – no draught. To the right led past a collapse debris wall to a left turn, near the far edge of the main passage, into a low but wide continuation floored with broken calcite and formations. Two tight sections were passed into an open area beyond which the draught emerged from a low and narrow continuation. Play over for the day.

Chris and Richard did some capping and Richard took a look along the cross rift to the high level blockage with a cross wall beyond it. Here a very narrow rift returned to the left, parallel to the main passage. Back at the main passage/cross rift junction continuing downwards did not look very hopeful so that appears to be an end to work in that area of the cave.



(67)

**Sunday 14th** Richard, Nige and Phil to **4474**. Richard went looking in the area near the bottom of the first pitch where Chris had been digging some trips ago and found a way to continuing passage. After returning he was dispatched to dig the draughting continuation of the big low level passage located below the tight rift. Good digging in sand meant excellent progress to where the roof was sloping upwards. Meanwhile at the end Nige and Phil had fun with hammer and bar in very tight and awkward conditions. Eventually packed in at the point where a bolster chisel was needed to remove a calcite/rock hump and allow access to a possible way up to a higher level, draught still encouraging. Meanwhile Chris had been driving around looking at various surface possibilities.

**Monday 15th** Weather forecast not brilliant so went to look at one of Chris' Sunday spots, located in the low point a little way below **4259**. This appears to be a wet weather sink and has a bit of a draught but as it is fairly well choked with debris would require a major effort to make progress. The threat of wet weather curtailed further action.

**Tuesday 16th** All to **4474**. Richard and Phil went through the passage Richard had passed on Sunday 14th, pushing and surveying along rifts and low passages, to end in a high level traverse at a blockage that would require a lump hammer to allow examination of the end wall, a couple of metres further on.

Nige guided Chris on a tourist trip to the large section passage.

**Wednesday 17th** Richard and Phil into **4474** to continue the below the awkward rift draughting sandy dig and to survey out to the bolt at the beginning of the rift. Meanwhile Nige and Chris went surface bashing above the cave entrances finding a couple of potential shaft digs. On the other side of the valley there was an interesting collapse in the middle of the cattle track where it has risen above the valley bottom.

**Thursday 18th.** Rainy day, no action other than working on survey data.

**Friday 19th** Richard, Nige and Phil into **4474** to push and survey the far end of the main passage. Unfortunately the chest height hole was blocked by a collapse of several medium and large boulders and it was not clear as to what had happened in the chamber beyond. Nige exited whilst Richard and Phil headed downstairs to continue digging up-slope in the draughting sandy dig. Fairly quickly they were into an enlargement of up to 4m wide and standing height or better. After a number of metres the passage reached a slope up to a boulder choke, with a narrow descending rift on the left. Up the face of the choke there was a hole that would be large enough for access to examine the top of the (disto'd) 6m height. The passage was surveyed. Later invited James, Alex, Chris S and Chris ? to come along on Saturday and work on the boulder choke/rift at the end of the sandy dig

**Saturday 20th** Richard and Phil took the foursome into **4474** and pointed them down the rift to the lower areas, then headed towards the left hand series. Adjacent to the 3 stal blockage Richard dropped down a hole in the rift floor to a crossroads of passages but none longer than 5 or so metres. Onwards beyond the 3 stal blockage to a rift/aven located off the main way to inspect a floor level low passage. Unfortunately progress was halted after a few metres by a calcite blockage that will require more than a lump hammer to pass it. Onwards to the high level rift where it's calcite blockage was removed to allow access to the end wall but there was no feasible way on. A few metres back a descent to the bottom of the rift gave access to a short section of dead end passage. Back in the vicinity of the rift/aven a tight route was examined and an echo suggested it might be worth re-examination with chisel action drill/capping. Then the pair headed down the awkward rift to the lower areas.

The other four had managed to free climb up the choke into a nasty area of horrible looking boulders. The adjacent downward rift gave about 30(?) metres of passage ending in mud blockages, no draught, and damp mud indicating no draught at any time. The area was evacuated and the ladder and traverse line in the awkward rift were removed. The visitors were allowed the pleasure of further surveying, down the hole near the 3 stal blockage, followed by a visit to Richard's tight passage echo. James in particular thought it was worth a little effort so spent some time wielding a lump hammer but to not much avail. The party then left the cave.



**Sunday 21st** All four of the team headed to **Maze Cave (3268)** to continue work in the only likely looking lead, the sand choked high level passage leading off the big rift. Nigel and Richard went digging initially taking out slurry similar to the October '18 trip, then Richard broke through into less than a metre of passage that led into the bottom of a hanging rift. The initial excitement quickly died away when it was found that one end sloped up to jammed calcited boulders and the other closed down beyond a small grotto. Richard pushed an in-the-roof passage but this quickly was abandoned as it his light could be seen on the jammed calcited boulders. He and Nige surveyed out whilst Chris and Phil tried to take a look at roof level of the end of the big rift. This action was handed over to Richard who reached the roof, dug forward for about a metre but as it had all the hallmarks of a long-term dig gave it best. Cave cleared and case closed for Maze Cave.

**Monday 22nd** Mob-handed to the depression/valley containing, amongst others, Bamboozle (3333) and 4698. Chris and Richard headed into Bamboozle whilst Nige and Phil headed into 4698 to continue digging in the draughting boulder floor. The draught was as good as before and a large calcited boulder was reduced and moved. However this just gave a better view of the difficulties and effort that would be required, including supporting the entrance slope, so was abandoned for the time being and a return made to Bamboozle. Richard was surveying below the pitch and the draught source was confirmed as coming up a tight rift about 8m deep. This would require capping all the way down with no idea as to whether there would be any way on – in the Dales yes, in Matienzo probably not worth the time and effort. As the cave was vacated a blocked passage near the entrance was attacked and gave about 2m before narrowing just before a small crossroads, with a run-in visible another 2 or so metres further on. So we left the cave and knocked it off the list as not worth further action.

**Tuesday 23rd** Richard and Phil returned to the Bamboozle valley to survey and attempt to recover Phil's long-stuck capping pin in xxxx. Surveying went well, Phil had another go at passing the squeeze in the low level rift to reach the stuck pin but his bent arm still got in the way. Richard started capping forward but eventually, as we only had one battery, forced the squeeze, tried to move the pin but as with previous attempts had no luck. He had enough battery power to drill one hole to cap the squeeze, then the cave was exited. Chris had spent some time on the surface but found nothing of interest.

**Wednesday 24th** This was a surface day. The team visited the area immediately east of 4723 to check a deep shakehole next to the road, no joy, whilst a visit to 4723 showed no change since the last visit. Next into the woods a little to the north, to look at 3630, two draughting holes in the bottom of a big depression. Both were dug and had some draught but gave all the appearance of being major operations. Then it was a rush to La Cavada to meet Miguel and another member of the Pistruellos, Pedro. We exchanged information about recent work, including viewing some of their underground filming which included the deep shaft up at Alisas (2038). On their first major push they were foiled by broken drill bits but they plan to carry on later this year.

**Thursday 25th** Chris took Richard and Phil to 4474, then returned to get Nigel and go for another look at 3630. R and P were heading for Richard's "echo" passage. There Phil spent four and a half hours managing gear – drills, capping stuff, lump hammer etc.etc. - whilst Richard tried to make progress, first in the bottom section, then in the upper. The rock was poor for capping, the passage extremely tight and awkward for drill chiselling but eventually he managed to get his head around a crucial corner to realise that the continuation was too tight even for the skinniest skinny. Efforts abandoned and cave entrance pitch cleared of its ladder and line.

**Friday 26th** A quiet day. Team went to 3239 where, in 45 minutes, the floor at the bottom of the entrance rift was removed, leading to a quick gain of another 5m down the slope, followed by 3m horizontal to a choke and quite a lot of bones embedded in calcite on the floor. Another one knocked off the list. After this a stop was made to look at 3213 and an unrecorded adjacent hole but the presence of farmers put a halt to that. Back to base for a major washing session and the return of gear to the Matienzo store.

**Saturday 27th** Clearing up and a quick venture into the newly acquired area to spot some possibilities for the future, then time for the ferry.



69

From: Juan Corrin <uzueka@aol.com>  
To: papard <papard@easynet.co.uk>  
Subject: Re: P Parker's account  
Date: Mon, Jun 3, 2019 10:34 pm  
Attachments: HigherLaGatuna.jpeg (235K)

Attached is the La Gatuna area. I think the positions agree with Richard's notes, but we may have to wait for Phil to get back to the UK before making more sense of these.

I hadn't suspected any "new" ones at La Gatuna.

The others:

1: One of Chris' Sunday spots below 4259 - we can guess possibly at the grid reference - There's an enclosed depression just below - or send Chris a map to mark on.

2 & 3: a couple of potential shaft/digs above 4474

4: The interesting collapse in the middle of the cattle track

5: The hole adjacent to 3213 (I'd ignored that one!)

I haven't picked up on that last one at Navajeda and still can't see a reference 4223 in Phil's or John's accounts. I think you meant 4723 - if so I agree with you.

So 5 - ignoring any anomalies at La Gatuna.

Cheers

Juan

Juan Corrin  
UK : 015242 62809  
Mobile: 0044 7815 745072

-----Original Message-----

From: Phil Papard <papard@easynet.co.uk>  
To: 'Juan Corrin' <uzueka@aol.com>  
Sent: Mon, Jun 3, 2019 9:19 pm  
Subject: RE: P Parker's account

Juan

I am not sure if there are 4 new sites - The ones in La Gatuna are already on but I had 8 and he seems to refer to 9 so maybe the resurgence is missing, but it is not clear had he says 3 in the woods but only describes 2? The others I noted were in Barrio de Arriba near sites 4259, Moncobe near 4474 and San Antonio near 3213 the only other one I noted was the no-go shakehole in Navajeda nr 4223 that seems not worth recording - Have I missed one?

Phil

From: Chris Camm <digscaves@yahoo.co.uk>  
To: Juan Corrin <uzueka@aol.com>  
Subject: Re: Matienzo - grid references  
Date: Tue, Jun 4, 2019 6:53 pm

Hi Juan,

4971 445671 4799190

4792 445543 4797765

4973 further along the small scar that 3213 is in. As we couldn't examine this we don't know which is which only that there are 2!

I'll add checking these and the grids to my next trip out

Cheers

Chris



**From:** Peter Smith <smith\_peter2004@yahoo.es>

**To:** Juan Corrin <uzueka@aol.com>

**Subject:** Re: Cave in San Antonio

**Date:** Wed, Jun 5, 2019 2:31 pm

**Attachments:** 3239.JPG (3048K)

Hello Juan

Thanks for that. As it happens I had to write to you about bones. I showed the various bones we've found to the palaeontologist Pedro Castaños last week and yesterday he sent me the list with his identification of them.

In fact, they brought a piece of calcite with bones out of 3239, and I also showed them to Pedro. He took away the other bones to study but he said 'you can keep those!' He thinks they are possibly of a juvenile red deer or even a calf. Here's a photo.

The most interesting remains are the ones from Professional Advice Chamber in Uzueka. They are of a leopard, *Panthera pardus*. He said that as soon as he saw them, and yesterday he's confirmed it. I've told Di.

Some of the remains from 880 are red deer, just not the ones that I thought were.

We'll have to find the best way of putting the information on the website.

Cheers

El Miércoles 5 de junio de 2019 13:24, Juan Corrin <uzueka@aol.com> escribió:

Hi Pete

You may want to have a look at site 3239 when you're out and about. Bones calcified in. Could be interesting - and there are no photos!

Cheers

Juan

Juan Corrin  
UK : 015242 62809  
Mobile: 0044 7815 745072

1 Attached Images



6/6/19

I'd just like to add, in case anyone's wondering, that they haven't exactly been given to Pedro. After I showed them to him, he asked to take them to study them better, but he will return them. Also, my fault, I've misinterpreted his words about the bones from 3239, because they can't be calf because of the fragment of horn, he actually said young cow (young because the epiphyses aren't formed at the end of the bones).  
Cheers, Pete







## **MATIENZO CAVES PROJECT**