

LOGBOOK

Year: 2016

Season: Easter

Logbook pages scanned to jpg then combined into a pdf file using <http://smallpdf.com/>

Juan Corrin, May 2016

EASTER 2016

Declination
0-65

①

From: john southworth <direct.station.limited@hotmail.co.uk>

To: juan corrin <juancorrin@matienzo.org.uk>; Phil Papard <papard@easynet.co.uk>

Subject: Mines

Date: Fri, Feb 19, 2016 12:57 pm

Attachments: 3.jpg (4483K), 4.jpg (3215K)

Needs numbers? * CC in November 2015?

Hi Juan, Phil.

No5 Barrio de Arriba

Thanks for the mine info next to the house, we had a sneak look at this some years ago, what could be the mine is 10m west of the house on a raised flat garden area accessed up a couple of stone steps. From the man made entrance it is about 3m long ending in a blank wall, the way on, if any, must be under the rubble floor. I walked past this house last November and between the mine and the steps is a low wide opening which I missed on the previous visit, will need permission this time, they have a guard dog.

Chris found another mine somewhere in area marked 3rd mine on the pic which ends in a drop which he thinks is choked at the base, needs another look, also NE of mine 2 he found a shaft which was descended but choked, Phil thinks we should have another look at this being over the projected line of the passage in mine 2. On the CAN.GOV.MAP (relieve) behind No5 is a dark feature, seen from the road it could be a cliff face or a depression above the face. Phil and myself have plans this time to have a good look around the whole area and also down the draughting pitch in mine 1 and start a survey from the entrance. On the 5m 090506 map another LA MINA is showing and also one further north.

We plan to resurvey mine2 and dig at the far side of the lake and near where the pitch drops into the main passage, will let you know if fancy trips down 1 and 2.

LA MINA SHOWING ON MAP 5M 090506



From: Phil Goodwin <philcygoodwin@gmail.com>

To: Juan Corrin <uzueka@aol.com>

Cc: john southworth <direct.station.limited@hotmail.co.uk>; Phil Papard <papard@easynet.co.uk>

Subject: Re: Mines at Barrio de Arriba

Date: Fri, Feb 19, 2016 11:39 pm

Hi Juan,

I think John has told you we thought there might be something behind that house. What is particularly interesting for me is that it may tie-in with a document I read on-line - you have probably seen it yourself at some time. It talks about two mines below the 'ermita' in Los Llanos. One is called the 'Very Good' mine and the other is the 'Apolonia' mine. Both were said to be for calamine and zinc blende, and possibly iron in the 16th century. There is no mention of lead, which is strange as there is plenty of galena around the area.

The Very Good mine is the well known one. It was mined for iron in latter years by the Orconera Iron Ore Company run by Juan MacLelland a mining engineer. There seems to have been a MacLelland who was professor of geology in the 19th century in Santander. Is it MacLelland who own the Santander shipyard?

The fact that an entrance is specially mentioned at road level behind the house suggests it is not just a trial adit. In which case it could well be the Apolonia mine. It also suggests that there could well be a whole series of galleries inside the hillside waiting to be discovered.

Here are a couple of links which Miguel of GE Pistruellos sent me.

http://www.buc.unican.es/Fondo_orig/Fondominareocin).

https://revistanivelcero.files.wordpress.com/2012/08/nc8_03.pdf

Cheers, Phil

On 18 February 2016 at 21:11, Juan Corrin <uzueka@aol.com> wrote:

Hi John, Phil

I'm just dissecting "El registro arqueológico del valle de Miera" (cataloging what's relevant to Matienzo Caves) and on page 493 there's a column about the Mina de Barrio de Arriba-La Cavada. The site was probable a Roman mine. Also mentioned is that, at the Alisas road level, there is a mine entrance on a private plot "virtually annexed" to a dwelling (number 5, Barrio de Arriba). I've produced a Google Earth pin for that house (attached). Double clicking the downloaded file's icon will open up Google Earth. If you got the latest Matienzo file you can also show the surveyed passage further up the hill, etc. (Screen shot of the area also attached).

I couldn't see an open entrance on Street View!

Cheers

Juan

From: Terry Whitaker <t.whitaker1@btinternet.com>

To: Juan Corrin <uzueka@aol.com>

Cc: Pedro <smith_peter2004@yahoo.es>

Subject: Re: Dte tests summary Winter 2015-16

Date: Wed, Feb 24, 2016 10:48 am

Hi Juan,

I think where you placed the entrance is exactly right on the maps. I have also checked that the location on the Matienzo map appeared correct and I used the map contours to estimate its height at about 265m. However if you use Google Earth and examine where I think the entrance is located that gives approximately the same co-ordinates but a height of around 280m! Don't have any idea how accurate such Z's derived from Google Earth actually are. So 280 - 14 gives the bottom at 266m which places it about 12m higher than Jivero 1 [254m]

With regards to flowthrough time if most of the passage is large and flooded between 24 and 48 hours may not be unreasonable and within that range 25 hours could be consider normal even in flood.

Regards

Terry

At 11:09 21/02/2016 -0500, you wrote:

Thanks Terry.

I think that the map contours might be out again. It would be useful to do a surface survey from one of the nearby buildings to the east that show on the map down into the entrance. The nearest building corner closest to the entrance is almost on the 265m contour. (It could well be that I've placed the 3884 entrance too low down on the hillside.)

With current data, Jivero 1 entrance is 5m higher than the downstream end of 3884!

The length of time it took to come through in those water conditions also seems strange. Taking more than 48 hours over a straight line distance of 370m (a speed of 7.7m/h at the most) seems very slow. What do you think? It could be that the distance traveled is twice as far if the downstream passage is anything like the upstream high level that goes backwards and forwards.

Cheers

Juan

12-3-16 ✓ BIG MOUNTAIN HOLE = SIMON CANNELL.

(3916)

A QUICK CHECK TO SEE IF THE ENTRANCE WAS OPEN. THE HORIZONTAL TUBE HAS DONE ITS JOB, HOWEVER, AT THE END OF THE TUBE HALF A DOZEN SHOVELS FULL OF MUD HAS SLUMPED IN AND A LOVELY POOL WITH THE CONSISTENCY OF BLU MANGE HAS SETTLED IN THE BREAKTHROUGH WINKLE. IT WOULD BE WORTH THE FIRST PARTY IN TAKING A SHOVEL AND HAVING 5 mins DIGGING.

13-3-16 Eleanora (age 2yr 1m), Jenny, James, Si & Di
Riaño

WE HAD A NICE SURFACE WALK VISITING VARIOUS SITES.

INITIALLY JAMES & ELEANORA COVERED ALL OF THE LIMESTONE AND CRAWLED THROUGH THE FIRST CULVERT UNDER THE ROAD THAT THEY FOUND!

Eleanora's chosen digging tool and... exploring the culvert under the track



SITES VISITED

- ✓ 1672 - POKED AT THE ENTRANCE BUT DIDN'T GO IN.
- ✓ 1618 - A ~~SHORT~~ SHORT BUT IMPRESSIVE CAVE, A CONCEALED DRINKING EFFECT WOULD BE NEEDED BUT COULD BE WORTH IT.
- ✓ 1617 - HAD A LOOK AT THE DIGS, COULD BE WORTH THE EFFORT.
- ✓ 1666 - THIS APPEARED TO BE SUMPED A SHORT WAY IN. A MUD BANK AT THE ENTRANCE WAS ACTING AS A DAM, THIS WAS DUE TO START DRAINING THE WATER.

- ✓ UNRECORDED HOLE 1 ⁽⁴³⁸⁷⁾ [✓] (PHOTO) 30T 452799 4799363 ALT 334m
A SHORT HOLE LEADING TO A TIGHT RIFT, PROBABLY BLIND.
IT NEEDS ENLARGING TO CHECK.

- ✓ UNRECORDED HOLE 2 ⁽⁴³⁸⁸⁾ (PHOTO) 30T 452745 4799214 ALT 352m
AN UNDESCENDED NARROW RIFT, APPROX 4m DEEP. NEEDS A LADDER.

- ✓ UNRECORDED HOLE 3 ⁽⁴³⁸⁹⁾ (PHOTO) 30T 452633 4799251 ALT 301m
A ^{2.5}₃m DEEP PIT, CHECKED AT THE BOTTOM.

- ✓ 12362 - THIS IS AT THE BASE OF A SMALL CLIFF WITH AN OLD BATH ACTING AS A CATTLE TROUGH. VERY WET GOING THROUGH THE ENTRANCE CRAWL AND HAD A QUICK GO AT THE DIG.

- ✓ 14-3-16 2964 - NOT TOO BAD POT. - SIMON.

RIGGED THE CAVE UP TO THE LAST PITCH. THE LAST TWO PITCHES ARE FAIRLY WET. TO WORK AT THE TOO TIGHT RIFT AT THE BOTTOM AN UMBRELLA OR SOME SORT OF COVER WOULD HELP MAKE IT MORE PLEASANT!

~~14/3/16~~ 14/3/16 Wanderings around the area of Not Too Bad Pt ^⑤
Diane. - Ozana -

Headed NE of Not Too Bad through the scrubland
rocky ~~area~~ and wooded area. Came across a
well decorated cave - description of 0725 matched.
GPS points for 0725 = 30T 455433 4794703

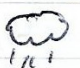
Altitude: 438 m ✓

Looked around the area of where 0725 was marked on
the map just to confirm it was the same cave.

Then wandered East + South to locate 3036' U. shaft
Described as 'a tight, unexplored rift with no draught'.
Had a good look all around this area and in
this location (exact GPS on map) I would describe it
as a small blind rift. video taken.

Headed to 1967: Shaft: Approximately 3m x 2m shaft
didn't descend. A path close to this shaft leads
straight to the meadow. En route found another
small shaft, undescended. 30T 455342 4794434
51m in width. no draught. Alt. 509m. (4390)

16-3-16 ✓ 2889 TREN LAYACA VIA BMCH Si & Di

 Simon dug out the slumped-in mud that
was at the end of the horizontal tube ~ By the
end of the trip it was starting to fill up again.

Greeted by the farmers "Welcome back!"

Went to Doty's draughting rift - put a rope on
the traverse at the end of Pete, Pete + Dave's
final survey ~~point~~ station. Simon descended
to the lower level - this was blind.

He then bolt-climbed up into the opening above
the end of the traverse. This was a climb of
approx 4m. The way on continued. To the left
was breakdown; to the right was a hole in a rift
which is worth investigating. Di's bad back is improving!

17/3/16 Fran, Penny, Jen, Eleanora spot-holing on the way to Carretow.
 Stopped about 100m south of the Centro Socio-Cultural on the
 main road (NW of the Fuente de Escobar) (through Rincón).
 Small built-over resurgence has small cheeses curing inside
 (site 4391) - El Cubio de Gencia. In the immediate
 vicinity in the wood above, black holes hide tiny rift.
 This whole hillside needs a good look as the vegetation is low
 and the Fuente de Escobar is nearby.

Then to downstream end of Espada (103) finding
 that the roadside shaft 3584 has been wrongly positioned.
 The new GPS puts it over surveyed passage in Espada and
 it may be worthwhile re-investigating 3584.

GPS: 4391	Cubio de Gencia	450746	4800374
3584	shaft	450 ⁷⁰³ 697	4800923 (adjusted). 1115
4392	muddy holes	450706	4800902

Nearby muddy holes (4392) show no promise.

15/3/16: James C & Simon C. Fernando II.

Went in to check if the Howling was still open after last
 summer's digging activities. It was! Though was slightly
 wetter than last time. Added a bit of fat to the
 chub just after the Howling to make it easier when fed. Went
 to Distance Chamber then turned round, looking at a for leads
 between here and the Howling. There were none. Spent about
 2 hours comprehensively digging the passage downstream of the
 Howling to attempt to drain the water. This looked like it
 was working, but we won't know til next time. Simon
 also spent some time digging steps on the various slippery mud
 slopes in the section between the Entrance and the Howling. The
 water makes them much easier when tired.

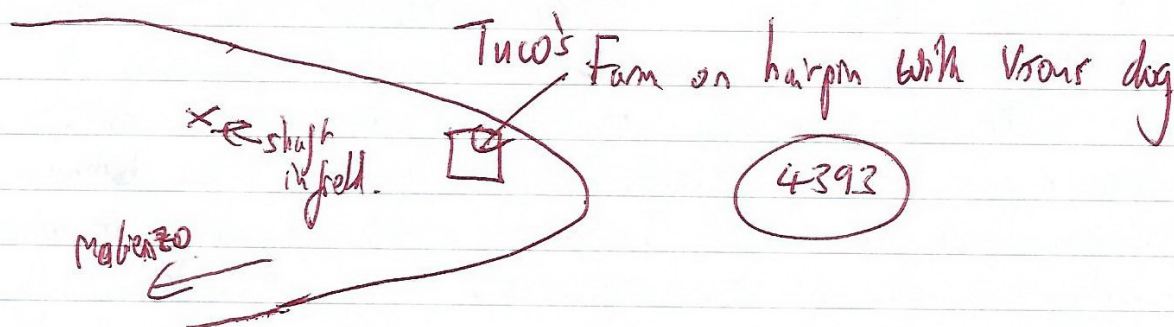
(7)

17/3/16 2889 Torca La Vaca via By Matt Calf Hde
James Simon & Dine.

Rigged the awkward traverse that leads to Pont Avon
~ it now has an interesting and possibly worthy of
a circus act trapeze line... much easier following
a long arduous day it
Issues with the disto x2 - calibration wasn't successful
so continued exploration.

Checked all high level red leads to the right of
Scafell aven - Didn't go up the first corner climb
which may be worth looking into - bolt climb or leg up.
Descended scafell aven pitch crossed the bottom
and traversed into the South Side - green level
South of SA. Checking for leads.
Out in time for Paplo's and chicken dinner.

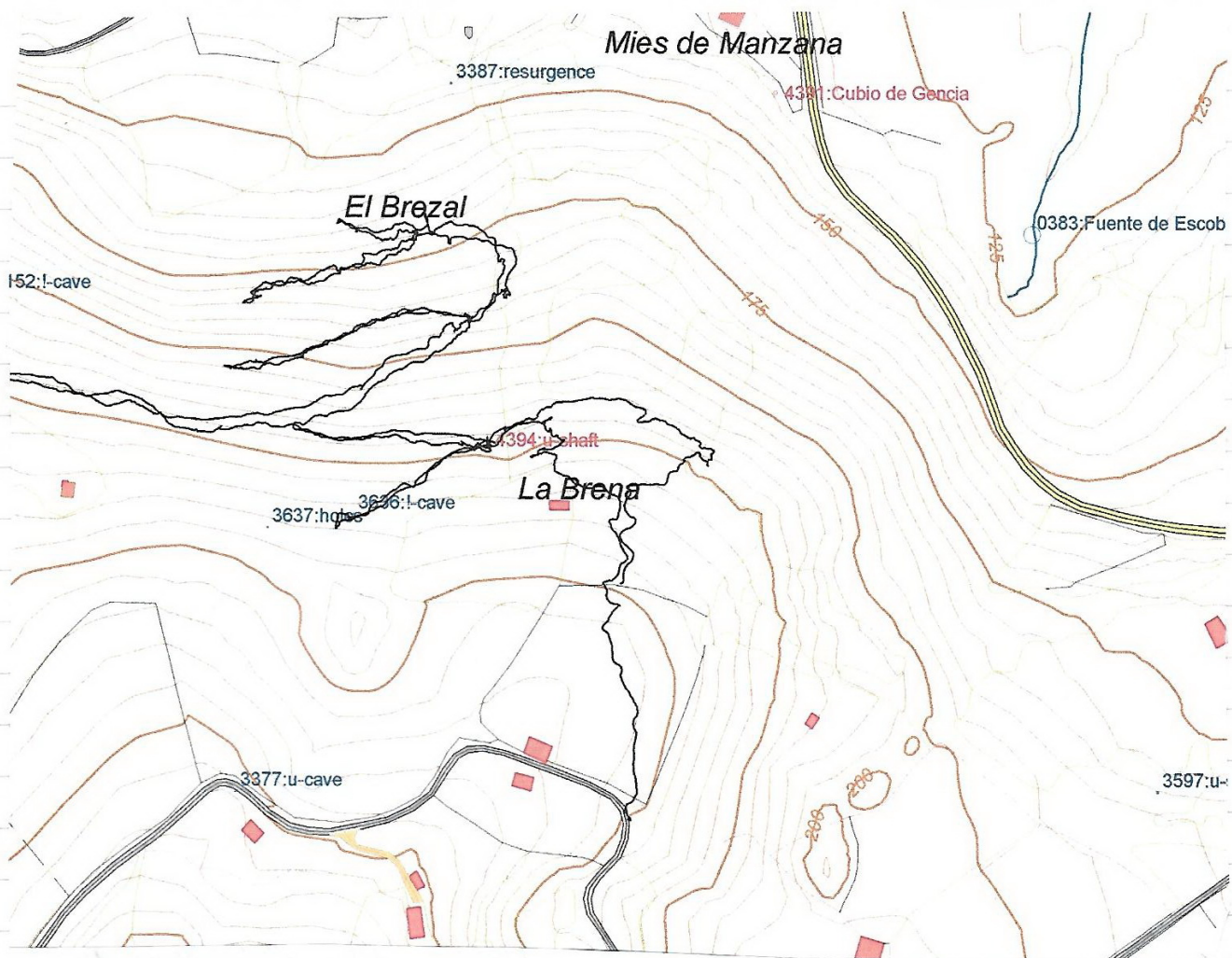
16/3/16: James C. Went for a run up the hill towards Funtle
Lus Varas. Found a shaft in a field that is at least
7m deep. Needs a ladder. Will return later.



12/3/16 Juan to check Caramuro entrance. Well choked. Alberto's barn
balcony has also collapsed.

18/3/16 GPS + photos of site 4393 - Juan + James ⁰⁴⁵¹⁵³⁶ 4797776 ↑

18/3/16 Juan walking mainly on tracks and semi-open ground in the woods
above the Funtle de Escobar at Rioño. One small hole found
muddy walls & about 2.5m deep to a construction and continues
below. (4394). Also rechecked site 3636 and took a few photos.
30T 0450575 4800166 ↑ 223



19/3/16 Simon C & DP 2889 VACA. X 16-01

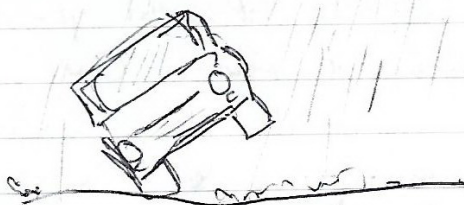
IN VACA VIA BMCH, CALIBRATED DISTO XL CLK THIS TIME.
QUICK TRIP DOWN SCAFFOLD DOWN AND UP THE NEW ROPES.
IT SEEMS LIKE THE DESCENDING PASSAGE WITH A DEEP PIT THAT (REMARKED)
ON DAVE SLEDNILL'S SKETCH OF FISTICAFES AT BOTONGRADO CONNECTS
W/TO KNOWN PASSAGE. WE THEN SURVEYED THE 'MAZE OF TIGHT
CLIFFS' SOUTH OF THIS ON THE GRT SIDE OF THE PASSAGE.

230m TOTAL WITH A FEW LEADS LEFT TO HAVE NEAR NT.

AS USUAL A DINING DATE FORCED A RETURN, I HAD FROM THE TOP
OF SCAFFOLD DOWN TO BOB GERMAN (OUR JOURNEY WAS SUB 15mins!!)

THIS WAS A WET LAB!

Batht 16-01



Made it back -
just in time
for dinner date!

(9)

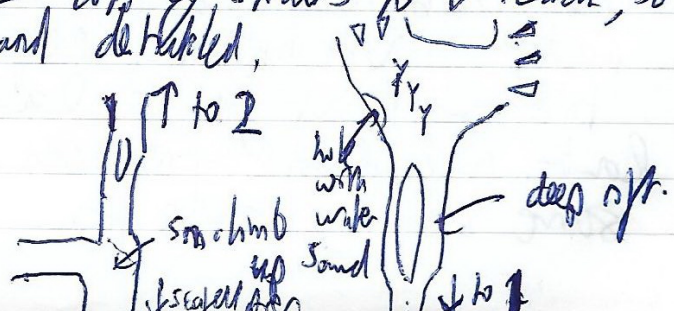
12:44 in BAR a Pedro is talking about fashion with Sue.
- pointed out the dress was well cut on the bias!
Not sure why I should be surprised, 'i' but Phil
knows a lot about dressmaking!

20/3/16 DigSci NOT TOO BAD POT DREN ✓

VISITED 4390 FOUND THE OTHER DRY AND DESCENDED, TURNED
OUT TO BE 4m DEEP TOO SLOPE OF STOCKED BRICKS DESCENDING TO
7m DEEP. CHOKED WITH NO DRAINAGE,
ALSO WENT DOWN 1967 AND HAD A POKE ABOUT - NOTHING
INTERESTING. WE FINISHED OFF CHECKING TO SEE IF 2964
WAS DRAINING. IT WASN'T.

20/3/16: Anthony Ray, James Cable. COW POT,
Batch 16-02

Went to bolt up the climbing lead about 20m from the
top of the traverse above Scafell Aven. Bolting up this took
quite a while because neither of us had done any overhanging
before bolt climbs before. At the top, the
passage looked very promising, and went for about
6-7m to the edge of a widening over a tight
muddy rift about 5m deep. This was crossed
into an area widely decorated with straws and stool.
This looked like it was going to go big, but unfortunately
did not. The rift was up to the roof at all sides of the
chamber. It felt like there was a bigger chamber above that
could be dug up to. There was also a climb down a hole
down which water dripping could be heard reverberating. This would
have meant destroying the top of straws to reach, so we
didn't bother. Surveyed and debulked.



21st March 2016. Juan, Penny, Jenny, James, Eleanora and Anthony Day. An afternoon of gentle, small cave exploration in La Secada and Bosmartín.

Site 4393 near to Tuco's farm. Anthony down a laddered 4m drop to a tiny rift with blocks. (Photos).

Then drove on to site 3850 just up off the road to Bosmartín and 250m above passage in Regatón. Took 10 minutes to dig out to the right of the blocking boulder then James and Juan slid down a 2m drop onto a slope down into a reasonable chamber with stal on a slope up which met the roof. All possibilities closed in. Total length about 10m. (Photos and video).

Finally we walked over to site 1948 where Anthony descended over the bracken and brambles to find that this shaft in a wooded depression in a field was, in fact, site 773. The hole at the base on the west side agreed with Pete Smith's description and survey from 1989. Juan went down while Anthony explored through to the aven. (Photos and video.)

(Site 1948 should now be freed up for a new cave and old photos for 1948 renumbered as site 0773)



21st March 2016

Phil P + Hilary ✓

Placed detector in 'Ent 2 of Fuente Aguonaz, just upstream of inlet of pipe to water station', and in 2364 resurgence just at point water flows of last drop to join stream. Flow in Aguonaz by $1 \text{ m}^3/\text{s}$ or so, also good flow at 2364. Heavy rain in area around San Antonio & along valley - but little in Mate. Checked out 'Duck Pond Sink' (1976), low flow to sink, dry river bed post sink - no dye lost - should be OK. It looks like the Heavy rain did not reach at this sink.

21/3/16

Di & Si

2889 Vaca

(1601)

tagged to

Continued surveying rifts south of Bothergate now 756 m. Ended in a swim in pools of water... Not wearing neoprene we decided to save that for a later date. Route included traverses across deep rifts with some sandy cranks too.

22nd March 2016 Anton Petho, Steve Martin, Bob Toogood, Felcie Masion, Dan Hubbis and Susie Martin

Cave Number: 4209 ✓

The plan was to go and remove a large boulder blocking a shaft found summer 2015 on the main farmers track. Unfortunately on arriving this time the shaft had slumped and mud had washed in. The dig was spent clearing this stuff and enlarging the shaft. Shaft composed of ^{packed} calified boulders with occasional void spaces. This calification may be locally constrained but large section of it was not cleared, and so this can not be confirmed. Shaft still has strong draft and the block of calified rock needs removing to see if mud leads up be found below it. This may be done on a fire entering this easily or possibly sold out in summer. Shaft ^{is} potentially connected with shakehole, dig 1381?

22/3/16 Phil, Pete, Juan to 4017 Pozo de la Haya where Phil surveyed the cave and, Pete found a couple of flint artefacts near the sump and Juan found a piece of black/red Bronze Age pottery. Then to ^{new} dig 4243 which needs snappers and ^{is} ~~not~~ [@] ~~repositioned~~ to 4395. 30T 0443439 4804680, but this is a new site - 4243 is to West about 10m. A short walk to a tyre-filled sink @ 30T 443340 4804792 needs tyres removing to see better. (4398)

Background detectors were then removed from site 2364 - called Fuente Molino - and Fuente Aguana. Both were negative.

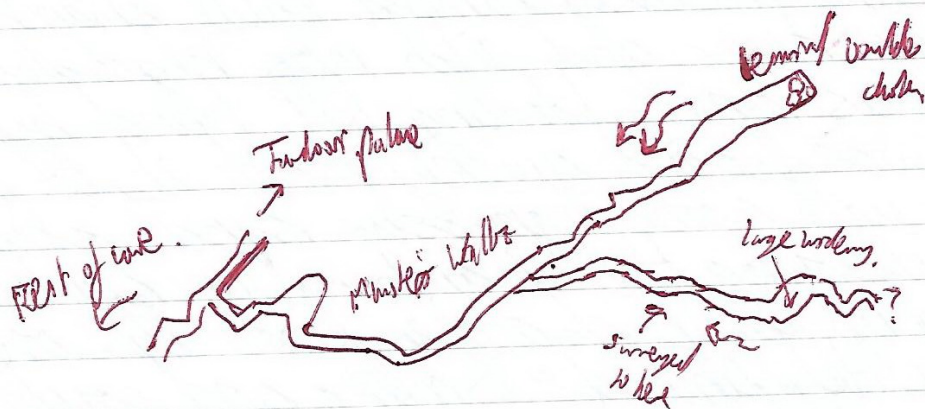
Photos taken in 4017, 2364 and 713 ✓

22/03/16: James Carole Anthony Day Fresno 0841

Went in with the aim of adding a handline to the rocky climb towards the end of the cave and getting to the end of Munster's Walze.

1. Simon and I's efforts at digging out the flowline a week previously had been fruitless - it was still just as wet.
2. We added a handline to the climb at the end of the sandy crawl after the snags. It is now possible to get to the end of Munster's Walze from the entrance in about $2\frac{1}{2}$ hours without any gear. Some cavebanks are useful for the traverse though.
3. We had a good look around the end of Munster's Walze. This is the main source of the stream that flows over the very impressive black and white rock cascades in this section. The stream rises out of boulder chokes as there is no way on in this section, though a climb up a rift in the roof looks interesting (needs bolting). This is marked on the original survey.
4. About 30m back from the end, a passage on the ~~top~~ South side of the passage - marked incorrectly as an overbow on the original survey - was pushed and then pushed and surveyed for about 30m, following an ~~inlet~~ ^{inlet} upstream. This eventually led to standing up passage and a muddy inlet streamway with possible climb up into bigger passage. We surveyed about 30m, but scuppered us another 30m or so. It's still going.
5. We didn't visit Tondori Palace.

5. ~~After~~ On the way out, we had a quick investigation of the water below the base of the mudstone at the end of the sandy crest. This is marked as a dotted line on the survey. We followed the water down the 3m wide 2m high passage until it reached a large pool. This goes swimming and winding went around a couple of bends to where it is still going downstream. Presumably the water will join in with the Sapsump, but there is a fair distance between them, so it needs harveying and pushing.



22/3/16 DE & SE 296LP NOTED BAD POP.

ATWICK EVENING TRIP TO SNAPSHOT THE CONSTRUCTION AT THE BOTTOM OF THE CORE. GOT THROUGH THIS AND ANOTHER 1/4" WIDE LEFT HAND BEND IS STOPPING PROGRESS DIRECTLY AHEAD. IT'S STILL WORTH ANOTHER COUPLE OF DIGGING SESSIONS THOUGH.

23/3/16 DI & SE

I WANDERED AROUND THE MATIGNO VALLEY.

02468 - HAD A LOOK AT THE IMPRESSIVE AQUA RESURGENCE

02467 - ALSO VISITED THE INTERESTING CAVE ABOVE 6913, A FINE VIEW POINT.

ON THE OTHERSIDE OF THE VALLEY WE CHECKED ON

137 - CORENIO - WHICH IS CURRENTLY SWAMPED.

80 - THE MASSIVE SNIFFT IS WORTHY OF A DESCENT LATER IN THE WEEK.

3929 - A MUDDY HOLE IN THE FIELD WITH WATER SEEPING OUT.

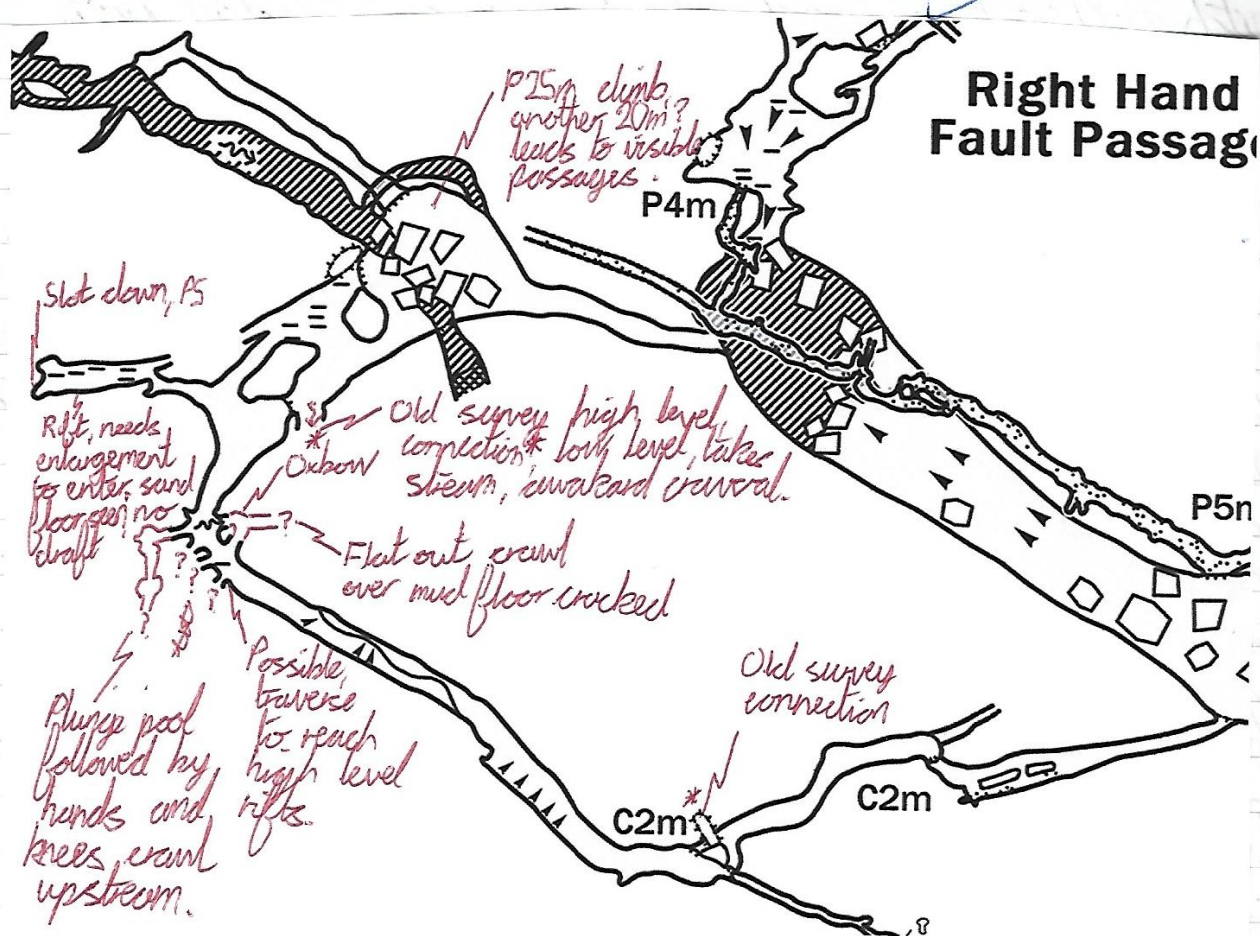
14 - GONZALO, AN INTERESTING SHORT CAVE, AS DESCRIBED WOULD MAKE A NICE EASY LEARNING DIVE.

32 - SMALL POOL WITH WATER RESURGING... ✓

23rd March 2016: Dan Hubbik, Anton Petho, Bob Toogood ✓

Cave Number: 114

Trip to re-climb previously climbed fault chamber. After the entrance series and pitch was negotiated, a bit of time was spent locating left hand bypass. Once it was located quickly made it to fault chamber, with some impressive sand sculptures. After exploring the chamber, Dan started bolt climbing up fault chamber from the overhanging entrance. He climbed ~25 metres and could see three possible ways on ~20 metres above him, but did not have enough rope to carry on, a return trip to reach passages tomorrow. This chamber has been described previously when it was first climbed 35 years ago. This stated it had been climbed for 50 metres or reflection they probably reach the spot Dan got to as a malpais was observed and then free climb the for a few more metres, but as they were probably using carabiners the possible leads were not seen. While Dan was climbing, me and Bob explored some possibly areas that have not been surveyed, see below.



24th March 2016. Juan and Penny - a quick investigation of the 3945 resurgence area, which produces copious quantities of water in flood. Tiny blocked passage seen at top top hole. Pipes and seepage from other holes feed troughs a few metres further down the slope. New grid reference is 30T 0453241 4799598 altitude 416m. Photos.

24th March 2016: Dan Hibbits, Anton Petto and Bob Toogood
Cave Number: 114

After yesterday's trip a return trip to Biggo was decided to reach the potential leads Dan had seen. We quickly made our way to Fault Chamber where Alan climbed first and I followed. He then ignited on and began bolting the next section while ^{Bob} prusick up the

pitch. After Dan had reached a safe ledge with three possible ways on, I followed him up and de-bolted the previous section. After setting up a tensioner for Dan rope, I gave the all clear to Bob that it was safe to join me on the ledge. After some more hard, bolt climbing by Dan he made it to the top. I followed him up and de-bolted as I climb. Upon reaching the top Dan informed me that it wraps out in given in the right hand corner was noted but was taken as not being anything significant. A possible lead on the opposite side was seen, but how you would reach and the fact it was trending the wrong way for a sump bypass made it seem not relevant. We decided therefore to survey down the chumker and document it. On the way down Dan, looked at the three leads mentioned previously but all wrapped out. Also foot prints were noted suggesting this point was reached, 35 years ago. We then carried on down and headed out.

24/5/2016 Day Steve and James Carlisle to KOK6 Daddy day cave. ✓

Put a 11mm yellow rope through the duck reach for Jim Lister to dive sump. Attached rope to natural belay near sump, other end to bolt in wall high up. This should stay in place through high water levels in winter floods. 1 1/2 hours in and out. Hillside above entrance should be worth a wander as scrub and jungle very walkable.

24/3/16 DP & SE 2889 VDCA

IN VAD BMCH, NOT LOT OF DEDRAGT, WE HENDED BOUL TO FISTICUFFS AT BOTCHERSOTE AND KITTED UP IN 7mm NEOBLOC LINK JOINS AND SURVEYED UPSTREAM IN DEEP WATER CANAL WHICH DISAPPOINTINGLY SUMPED AFTER AROUND 130m

THE INLET WHICH GOES UNDERSTN FISHCUFFS AT BOTENSGATE (DON'T BE AN IDIOT) DIRECTLY UNDER THE PRIMARY SURVEY STATION (16?), HAD A SILT BANK WHICH COMPRISED OF WHAT LOOKED LIKE COWSUIT! INCLUDING DECOMPOSING STRAW WARMS / LEACHES ETC. I WONDER IF THIS IS WHERE STINKPOT (2907) WATER EMERGES?

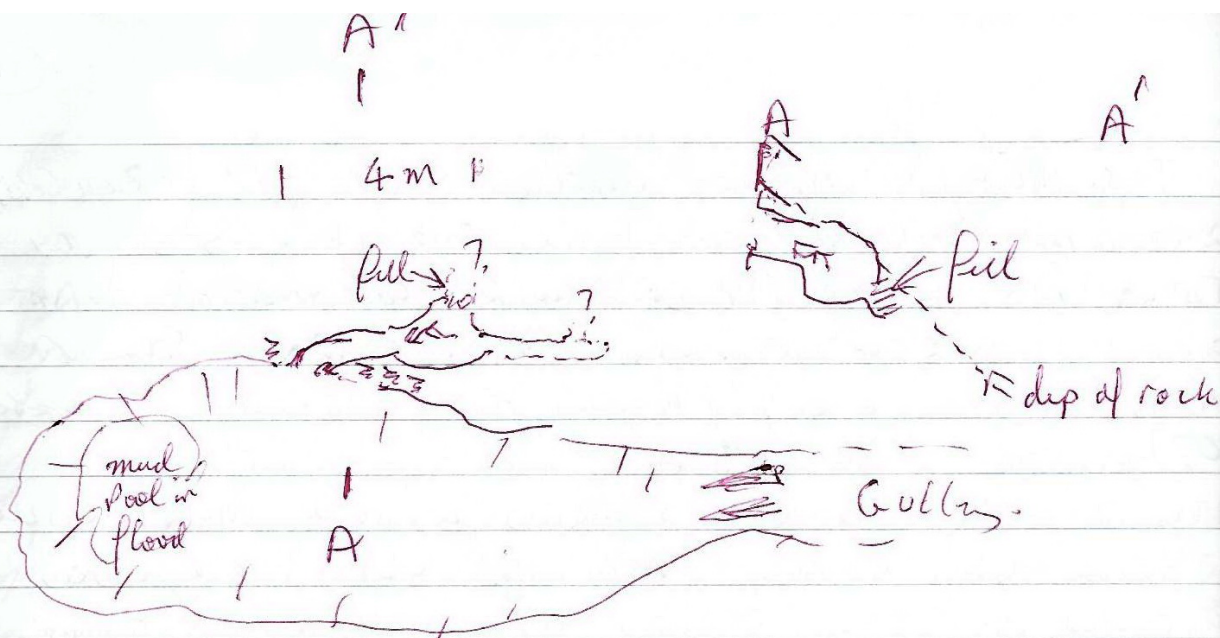
WITH THE TRIP BARLEY STARTED & AN ALLNIGHT CLOWN ON THE BOAT, ALREADY NEOPRIVE CLAD WE DECIDED TO CHECK OUT THE STREAMWAY WE FOUND THE OTHER DAY. UPSTREAM WAS SURVEYING IN WASE DEEP WATER PASSING MANY CROSS RIFTS WHICH WERE TIGHT OR CONNECTED BACK TO THE MAIN STREAMWAY. AFTER ABOUT 300M THE PASSAGE CHANGED TO AN AREA OF VERY DEEP WATER AND WIDER PASSAGE. THE ONLY WAY AWAS TRYING TO GET OUT OF THE WATER AND UP A STEEP SILT BANK. AT THE TOP THE WATER COULD BE SEEN TO CONTINUE ON THE OTHER SIDE, HOWEVER A DEEP OF 1-2m INTO OUT OF DEPTH WATER ~~AND~~ WITH NO OBVIOUS MEANS OF RETURN STOPPED PROGRESS. THIS POINT SEEMS TO BE DRAWING COM FROM BOTH TINE.

DOWNSTREAM FROM WHERE WE ENTERED THE WATER WAS DEEPER WADING / SWIMMING ENDING AFTER ABOUT 100M WITH THE WATER DISAPPEARING UNDER THE LEFT HAND WALL AND A SILT BANK CLOSING UP DOWN.

A GRAND EQUATIC TRIP TAKING ~~THE~~ THE SURVEY UP TO SURFACE 1100 M IN THIS AREA @ 1122m

24/3/16 4082 PHIL P, ^{Eddie} Jon, Pete S + Hilary

This is a cave in east side of depression at bottom of shallow gully. It seems to take a lot of water in flood. Day into small chamber. Lots of flood fill (leaves + soil) will need a good day's dig with more gear (two traps pull back rope etc to excavate, but first need to check drought in warm weather - only small drought - better
PW for sketch



4396 24/3/16 ~~Edde~~ Juan, Pete + Phil. On way
back from 4082 found cave in south side of field at
clump of trees. Pete scrambled down some 5 m in
cave to choke - no go & no draught
gps 30T 0447925, 4793920

4112 Guevada de la Costa de la Encina - Juan, Pete
Anton & Phil 25/3/16
Surveyed a cave between the two out of 4112 (did not
link to 4112 - see below). Then went to dig in 4112 &
noticed climb to passage also in north entrance where
passage drops down - need belts to reach. Anton
pushed flat out crawl that goes to south - need
a lot of work to progress. Spent some 2 hrs
trying to open up floor (cave boss) at end of
passage heading west at south of cave. Anton tried to
get through, but need mappers to remove floor
& bit of roof.
4397

25/03/16

Anthony Day, James Cordle

Fresnedo 0841

(19)

Went in to the far end of Fresnedo to finish off the leads found on the previous trip (22/03/16) (after a 30 minute break at the entrance to re-attach my battery box to my helmet). First stop was the inlet to the south of Munster's Water partially surveyed last time. The passage continued mostly in the same tedious fashion until a sump pool was reached. James poked a leg in and declared it to be not free diveable. There are no other realistic leads here, so this has been tried off. Inlet is 15m long.

Next stop was to follow the water at the foot of the headline since it didn't appear on the survey. Passage headed downstream in fine style for 80m through occasional waist/chest deep sections to another sump pool. There are no obvious inlets or leads in the run, so this is also tried off.

By now we were pretty cold, so headed out, passing only to for James to look at some side leads about halfway along the sandy passage between the sump and Boulder chamber where a stream is audible. He couldn't find any way to the water or other ways on.

The ~~passage~~ downstream passage is to be called "Not Too Shabby" which is clearly one of my favorite phrases since my Corman work colleague has picked it up. The less salubrious inlet to Munster's Water is to be called "Shabby Inlet."

Batch descriptions

115.90

Shabby Inlet 0841-16-01: Towards the end of Munster's Water, Shabby Inlet enters under the right-hand wall. The Water is followed upstream through a small rocky tube until a short cascade is reached. Beyond this, a ruddy inlet passage passes across a 10m area with no obvious way on at the top, before continuing as ~~recessed~~ wading sloping and crawling passage to a sump. This sump is large enough to dive and the ~~passage~~ inlet is approximately 10m long.

171.91

Not Too Shabby? 0841-16-02: Downstream from the base of the headline and the main Munster's Water Water can be followed for approximately 150m through several chest deep sections of wading

until eventually the dry land is regained in a full open passage
in which the stream sinks in a small uninspiring
Sump. Presumably this water meets at the nearby upstream
sump. There are no obvious lands in this area.

26th March Dan and Eddy cave hunting above Invisible Cave, but without a map / GPS etc. Found
big, open holes. Came back and collected Juan with GPS and camera and after walking to the "finds"
most turned out to be known.

Site 3360 visited and a couple of photos taken. The survey for this hole has yet to be drawn up.
from 2010

New site 4399 : a 2m climb down to where the base is undercut all round. Photos.
30T 0446759 4801644

New site 4400: A tiny 2m deep shaft that looks choked. Photo.
30T 0446743 4801679

New site 4401: A hole spotted on the drive back @ 30T 0446166 4802048. A vegetated depression is
on a bank off a grassy field. It has vertical sides at the top edge (where the GPS was taken) but it is
possible to thrash a way in down the lower east side. A muddy pool has water flowing out of it and it
may be possible to lower the level and gain entry to a reasonable size passage without having to use
diving gear. Small holes above the pool are choked solution pockets. Photos.

PISSED!

SIGHT!

26/3/16 COBO SIMA DEL DORADO DEUSE.
AN IMPRESSIVE HOLE IN SITE OF BORGERMAN PITCH OF 23m
RIGGED FROM DINING TABLE ON THE LEFT HAND SIDE ABOVE THE LOOSE
DROPPED DIRECT TO THE BOTTOM WITH MINOR ROPE RUB. ~~WE HAD A~~
THE WHOLE PLACE IS LITTERED WITH BOXES OF VARIOUS TYPES, WE
HAD A FEEL FOR ABOUT WITH A QUICK DIG FINDING NOTHING NEW. IF SOMEONE
WANTS A DIG CLOSE TO THE BAR WITH GOOD PROSPECTS, THIS MUST
BE A CONTENDER.

26/3/16 - 1205 - A dig at this site over the winter to
make a trench and see round the corner. The cave continues
very small with draught but from now on it would be
mining not digging. PS

26/03/16 - 114 - Return trip to explore inlets on Left hand bypass. Alex firstly explored a flat, out crawl that he estimates is 250m long, not flat out all the way soon enlarges and ends in 2 pitches down. While he was down it me and Tom climbed the first inlet you come to on the left. We rigged a rope to climb up as it quite slippery and unstable. Once at top the passage splits, the left ~~way~~^{passage} carries the stream, the right is a fossil passage with a sandy floor and is a classic keyhole shape with occasional boulders jamming the passages which you have to climb up over. This leads to another split the left branch after climb over a constriction you reach a veranda overlooking a streamway. This was explored later from below and the streamway only runs on a bit further before a sump is encountered. Back in the fossil passage above the right passage leads over a galcite floor to a small chamber in the boulder chock, here we found some mason plastic gloves, a pink pen knife and garbage dumps. The gloves were by a small slot that had obviously been dug, this led to an impressive over that ends in a climb up a ~~exposed~~ boulder with a mud floor which at the back a small draft can be felt. Doubling back on yourself leads to a climb back up through boulders back to a known chamber in the system. At this point we were going to survey out but ~~had~~ forgot the notebook so we plan to return later in the week to finish the job!

March 27th Juan and Penny walking the old tracks above Fresnedo. Drove up the Baujo road towards the radar station and parked at the first dip. Walked down field to the obvious track with many small stream possibly sinking down below the track then wandered around through mainly eucalyptus forest until we arrived below the radar station at site 2652. New grid ref 30T 0454303 4800808. This shaft is now covered over or filled. Photos.

New sites found in the same area, just uphill and to the west of the track junction, hidden in gorse, etc.

Sites 4402 and 4403 about 4m apart. Site 4402 is covered with a pallet. The other, slightly to the east, has a pallet a metre down holding back a dead animal. Both appear to be small shafts. Photos. Thirty metres west of these two, a square barbed wire fence (4 posts) surrounds a depression that was not investigated. Site 4404. Photo.

4402 @ 30T 0454148 4800775

4403 @ 30T 0454145 4800775

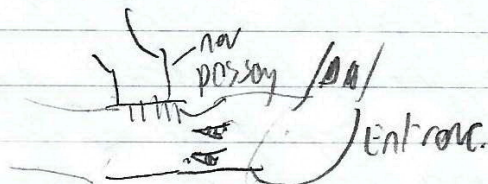
4404 @ 30T 0454111 4800780

A better grid ref for 2886 is 453300 4800054. Twenty metres west is more flowing water. Lots of water about but the sinks appear to be heavily choked or the streams flow far down the hillside.

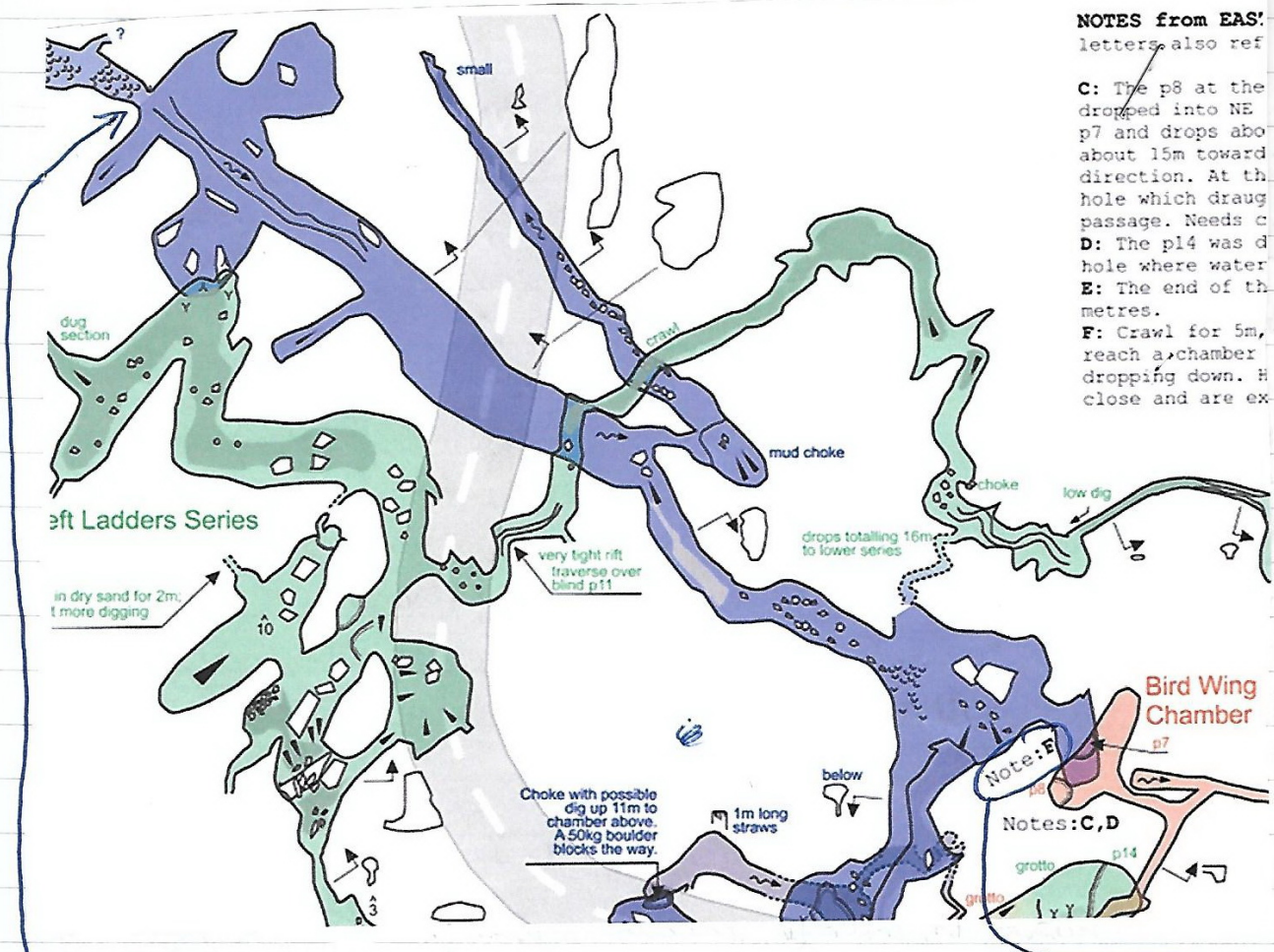
109 cellaron 27/3/16
~~109~~ - Looked at Phil's report rift, which Don described as climbing a fault. It did not go anywhere. I looked at a few side passages, one I dug entering 15 ft of dead-end passage. Tom descended a pitch downstream of the big chamber about 10-15m deep, choked in calcite.

On the way out Don noticed a passage leading off near the entrance, which he proceeded to bolt climb about 10m into an opening passage with a traverse over a 50m pitch that needs rigging (traverse). The pitch itself likely drops into known passage.

Don, Tom & Alex



27/3/6 #3234 Peter Ford, Toshu Keller



NOTES from EAS:
letters, also ref

C: The p8 at the dropped into NE p7 and drops abo about 15m toward direction. At th hole which draug passage. Needs c

D: The p14 was d hole where water

E: The end of th metres.

F: Crawl for 5m, reach a chamber dropping down. H close and are ex

2 1/2 hours searching and 2 snappers ~~snappers~~ makes it the fast way into the lower section.

At note F are snapper and digging opened into a shaft with 1.5m + 6m shaft and was a good passage. ~~Very~~ Very good draught in the crawl at F.

28/3 → Continued down the shaft, which lead to Toshu a rising passage, ending in an area, - connecting to Bird Wing Chamber. There a hole in the floor was hammered to size and dropped to 5m a short passage, - ending in a new pitch ~ 6m.

27/3/16 DICK & SUE, 2964 - NOT TOO BAD POT
ANTONY.

A QUICK TRIP TO SNAPPER THE DIG AT THE BOTTOM:
ON THE TRAP WE MET A LAND REVER COMING DOWN -
- "THEY DIDN'T LOOK LIKE FRAMERS OR PATHERS" !!!
DICK & PARANOID GUESS IS THAT THEY WERE CHUCKING
THE SIZENMETER(?) ~~IN~~ IN THE MEADOW ABOVE NOT TOO BAD
POT AFTER THE LAST VISIT!

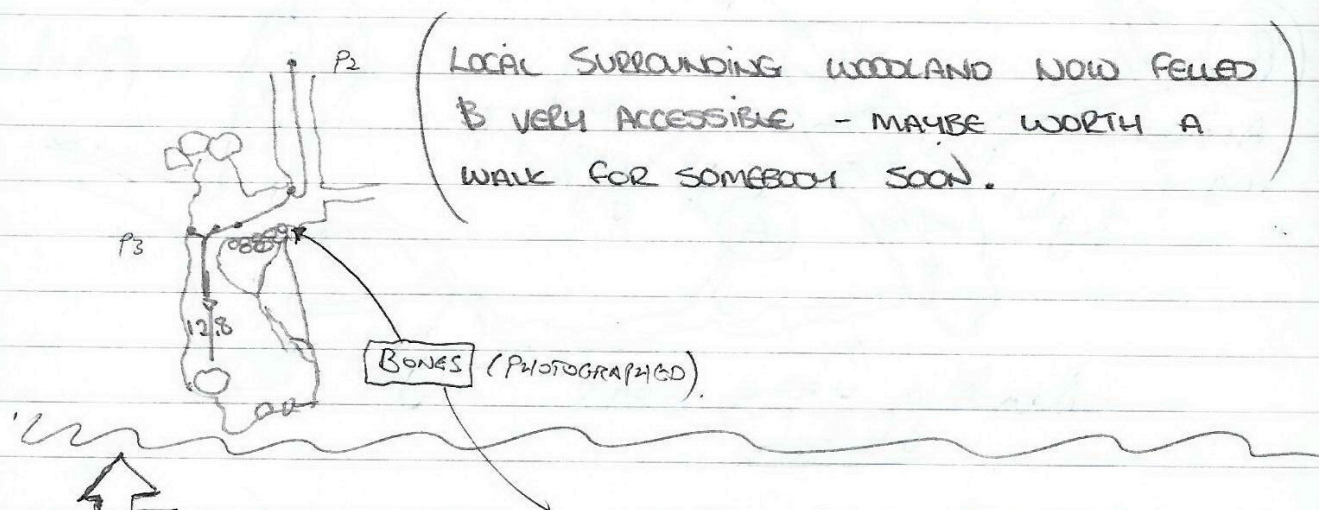
SOME CAPPING ENLARGED THE PREVIOUS SNAPPED POINT,
AS DICK & ANTONY REALIZED. 5 SNAPPERS WERE DISCOVERED
TOGETHER IN THE TOOTHY LEFT HAND CORNER BUT WITH LITTLE
DRAUGHT IT WAS VERY SMOKEY. DICK & ANTONY HAD TO GO OUT WHILE
SUE REMOVED THE LOOSE SOIL, IN THE MIST A GOOD FIRST LOOK
IT SEEMS TO BE A TIGHT SLOT 2-3 M(?) IN DEPTH WITH A D-
STONE EITHER ~~BEING~~ ECHOES OF PLOWS INTO A DEEP Puddle.
ONE MORE TRIP TO FIND OUT EXACTLY.

28/3/16 Phil, Pete Smith + Joan back to 4112 Cuesta de la
Encina to enlarge calcite squeeze. After a number of
snappers to remove some roof and create a ~~hole~~
hole in the false calcite floor, Pete was deemed
small enough to squeeze over and through to
the continuation finding --- the passage continued wider and
lower than previous rift passage. Still plenty of stal through. After 15
it reaches surface run-in, roots and drippy area. Some old bones
need a closer inspection, all needs surveying and photos.
After one attempt at returning a combination of Phil
on top of, and Pete below, the false floor working
around the hole enlarged the space allowing Pete
to squeeze back.

28-3-16 - ⁴¹⁸²CUBA LIBRE - TOM HOWARD, ALEX RITCHIE
& CHRIS BINDING. (25)

+

REVISIT TO CUBA LIBRE ENTRANCE (4182) FOLLOWING A TRIP WITH PETE O'NEILL IN SUMMER 2015. CARRIED ON FROM WHAT WE THOUGHT WAS DONE. RIGGED 8M TRAVERSE DOWN ON A LOOSE BOULDER FLOOR, THIS TAKES US TO THE HEAD OF A '4 HANGED' 12M PITCH. DEAD POT AS EXPECTED. AT THE HEAD OF PITCH A PASSAGE TO RIGHT TAKES YOU 90° ADJACENT TO ENTERING PASSAGE. A LOOSE BOULDERED FLOOR HEADS TO A CALCIFIED SECTION & THEN FINALLY ON RIGHT A CHOKED PASSAGE. NO DRAUGHT IN AREA, AND NO REAL LEADS.

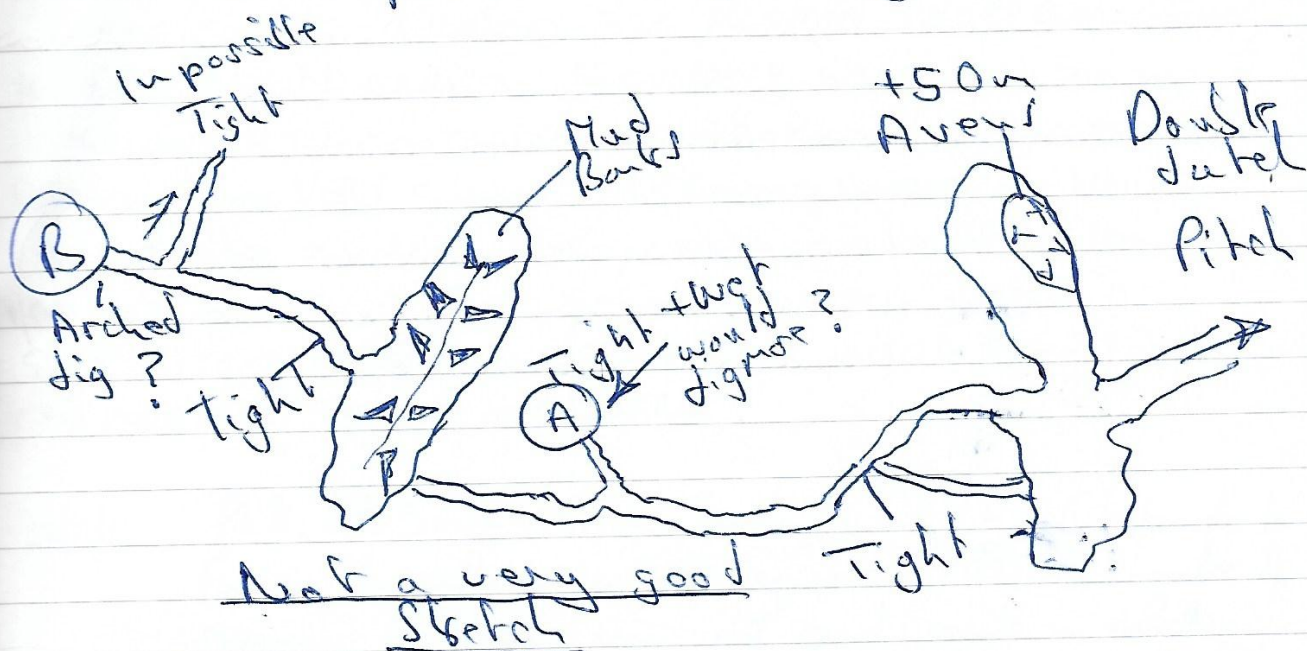


CHRIS B: MADE A 4 MINUTE FILM OF TODAY'S EFFORTS, PUT ONTO MAIN COMPUTER SYSTEM @ MATEN20. ENJOYABLE AFTERNOON'S CAVING IN GOOD COMPANY WHILE ARMIN RECOVERS FROM THE NASTY COLD SHE CAUGHT FROM MB. BONES IN CAVES AT BASE OF 2ND PITCH. Chris

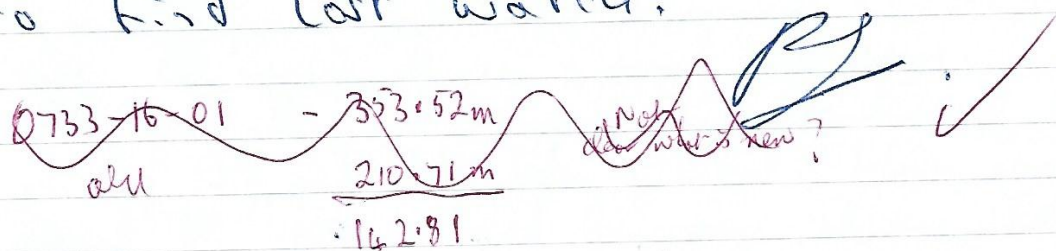


28/3/16 Valline Peter E, Ali, Peter H, Dorel
 Via Bottom Ent 4392

Entered Valline, to visit previous
 end but pushed upstream bottom of
 Pitch to Rio Rjora. Surveyed to
 main junction then upstream to new
 end. Pushed various side passages/Bite
 but main find was chamber at
 end with tight way on draughting
 but impossible to get any further.



Wet side site (A) would lower but still
 small (B) would dig to Arch but? Segor
 to left cave in dark and failed. Segor
 to find last watch.



29/03/2016

Torre de Telleran, 0109 Don Hiberts, Alex Pitche

Our aim was to explore passage Don had bolt-climbed to (10m)

previously where Don was stopped by a 50m deep hole.

We quickly climbed the pitch and Don started bolting the traverse over what turned out to be a 15m deep pitch.

After crossing the hole in the floor a slippery slope led upwards into a small flat-roofed ~~passage~~ ^{chamber}. The passage then began to drop back down a slope which ended at a pitch, only we had no rope. Don sent me back across the traverse to cut half of the pitch rope as we had rope spare thus we found was long enough. Excellent stamping passage then led back to the main passage, bigger we had dropped into known passage. Dismayed we left with just a sketch survey done see overleaf.

Video

29/03/2016

2167 Frank's Cave Don Hiberts, Alex Pitche 28th

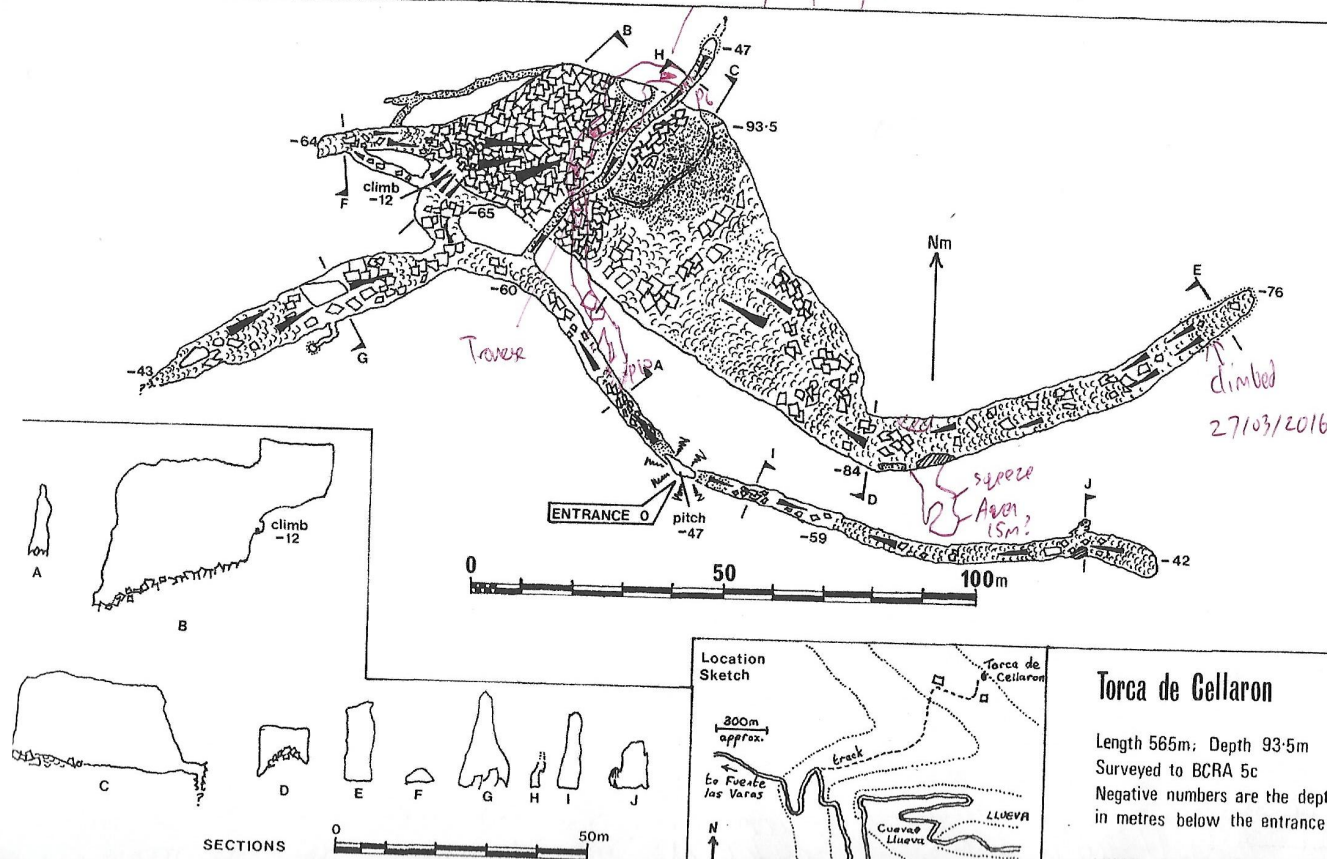
Don was wanting a small person to re-look at Frank's cave.

We first went along the rift to the end but was still too tight even for me it may continue beyond but does not look that promising. it needs a bit of capping.

We then ferreted about looking through gaps in the boulders on the chamber on the right. Finding nothing new. We then had fun getting back up rope climb me especially!

Survey from 27/03/2016 and 29/03/2016

No Non upod passage.



Torca de Cellaron

Length 565m; Depth 93.5m
 Surveyed to BCRA 5c
 Negative numbers are the depths
 in metres below the entrance

MUSS August '78

29/03/16 Anton Petho and Tom Howard

Surface Bashing on Euceto

X

? Same location as 6629

1200 - Previously described body size tube that needs a lump hammer. Lump hammer require needed to remove a calcite block and increase passage size over next block. In total 3 metre phreatic passage that is a flat out crawl, which leads to small flow chamber with sandstone formations, possible way on at back over muddy calcite floor, but very small and would require a lot of digging.

1200 originally placed on wrong location on map, new coordinates: ~~30T 4532878 4797215~~
30T 452846 4797215 ↑ 232

Needs number - Narrow rift, 2m visible, bending round to the right with tree root, columns, continuation visible but needs digging, no draft.

4405

✓ 184 ↑

Coordinates: 30T 453062 4797387

29/3/16

296LP - D & SE (NOT TOO BAD POT) (111060)

WE CARVED OUT THE SNAPPED CORNER SO WE COULD LOOK ROUND IT. IT IS TOO ~~TIGHT~~ NARROW 2m LONG AND TOO TIGHT - HOWEVER ANOTHER BIG DIGGING OPERATION WOULD MAKE IT WIDER, IF THERE IS SOMETHING TO TEMPT US BACK. PERHAPS VISITING IN THE SUMMER MONTHS TO SEE IF THERE IS A 'PROPER' DRAUGHT CURRENT OF THE TOP OF THE POT HOLE ... TAKE FINE CORNER - ALWAYS Toss of D STONE DROPS INTO A DEEPEN POOL WITH AN ECHO ... DELISSO.

0114 - LUERA - 30/3/16 - Anton P, Alex R & Tom H.
Survey. inlets in LEFT HAND BYPASS. See notes.

LINKED TO CAIED IN CHAMBER BY STREAMWAY &
STAR IN AVEN NEARBY. Del 16-01 L=126.5m Survey down up?

Also, whilst out, visited site 0313' & EXPLORED TO THE
End - Tight rift strong draft, possibly explorer again and over near capping.

4017 Pozo de la Hoya - Phil & Helon
GPS of the 3 ent.

Tight - going to
get to the end.

Rift - 443380 4804717

Tyre - 443371 4804719

choke - 443368 4804719

30/3/16 Vallina - surface survey from both entrances to points, hopefully
fixable from surface survey but not fixed as yet accurately.

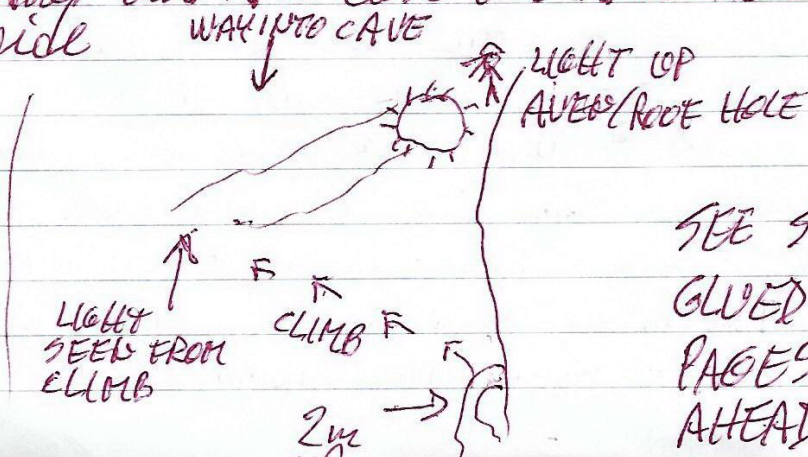
Hi:

29/3/16 #0040

Peter F, Ali, Peter E, Dave B, Chris Binding, Torben

Roof holes in the entrance area was recorded
for confirmation and draught. Two places
were bolt-climbed.

1) On the left wall (looking into cave) up over
flowstone and up a ramp (4 bolts). At
the top could see ~~high~~ light from roof hole
further out the cave on the ~~same~~
same side



SEE SURVEY
GLUED IN 2
PAGES FURTHER
AHEAD

- 2) On the right side (leading into cave), further and about 2', a roof hole was climbed (2 balls). It ends blind.

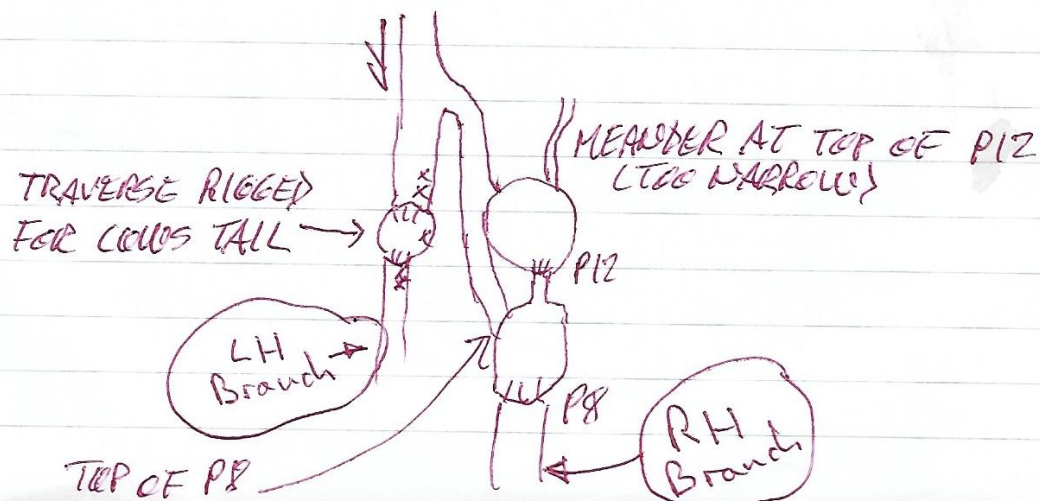
Torben

30/3/16 Peter E, Torben, Peter ^{Fast.} (Pot of group)
0733 Vallée

Visit de end from October 2015
climb up from sumpt, bypass. Passage still as awkward as before with some sections of walking down throtching along suit grabbing, inclining, sharp but at least dry passage.

RH Branch at end looked promising but 8upitel lead quickly to a 12m pitel which was blind. At top of 12m pitel a traverse became too narrow.

LH Branch climb down climbed but traverse on RH wall (good rock) after 5m you at a view above previous 12m pitel with a view of top of 1st pitel (8upitel). Way on ~~is~~ ahead with good draught is easy going 2m x 2m open passage 😊



29/3/16 #0040

ADDITION TO DESCRIPTION 2 PAGES BACK



29/3/16 Completed survey of Cueva del Comellastes - new layout 713 - excluding supps.
Mi, R. B., Angus.

Totter

31/3/16 Vallina - checked fix locates on track above top entrance & measured top entrance chamber to start of "cave on" to main cave
 Ali, P. Bayle, D. Bell, Terry Little. GPS set to Top entrance -
 Re Survey Top entrance chamber 450020, 4792407

From: Juan Corrin <uzueka@aol.com>
 To: philcygoodwin <philcygoodwin@gmail.com>
 Subject: Re: survey
 Date: Thu, Mar 31, 2016 6:59 pm

Thanks Phil

It'll go into the system and get a number soon - which will come back to you.

Cheers

Juan

Juan Corrin
 UK : 015242 62809
 Spain : 0034 942 619931
 Mobile UK : 07815 745072
 Mobile Spain: 0034 649642823
 Skype : juanpennycorrin

Number 4406

@ 30T 0443836
 4801672

One of the Nawajeda
 church sites?
 Probably not.

—Original Message—

From: Phil Goodwin <philcygoodwin@gmail.com>
 To: Juan Corrin <uzueka@aol.com>
 Sent: Thu, Mar 31, 2016 9:36 am
 Subject: survey

Servex data for a small cave.

Cheers,
 Phil

Location for Sta O Vallina top entrance
 450020 4792407 397m.

30/3/16 Vallina Tony Little, Dave Bazz, Chris Bindings, Terry Whittaker.

0733

(OTHER PART OF RESUME)
 GROUP

Exploring from survey station 33 south of Pantaleon yacho in
 Small phreatic tube about 120m long ending in a too narrow
 Drop of about 20m with the sound of a stream below. Surveyors
 and entered. Survey BATCH 16-02 (120m)

It entered with a new boiler suit and came out in Paces

He used his spare SRT kit ^{fixing} ending him a 1 hour puzzle up main pit h

see notes further on

New proposed location for 4382 Valler bottom entrance
450745 479265 311

30th March 2016

Dig at the downstream end of Orillón. Simon, Pete Hall, Pete Smith, Di and Juan in through the 1162 Orillonzuco entrance. Si and Pete Hall capped and dug at the sharp end for about 5 hours while Juan, Pete and Di hauled the material out and up the mud bank.

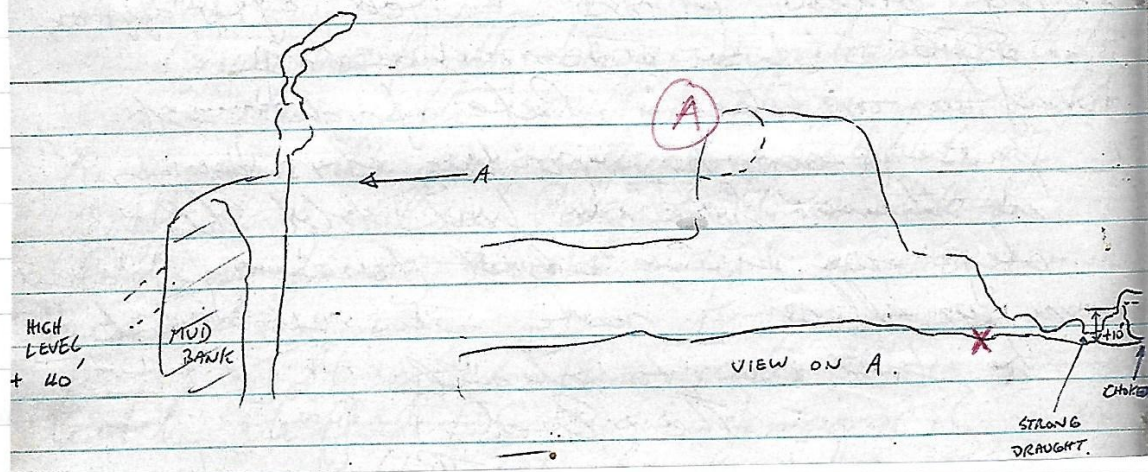
Access was finally gained, through 2 chambers and a deposit of clean-washed pea gravel, to the final chamber where a 3m climb was seen. This was the same as the 1974 account and sketch by Baz Davies (below). The dig had been a re-examination of sediments deposited since 1974.

Simon climbed up to see a very small draughting crack continuing.

It may now be a good plan to dig out boulders and cobbles where the stream sinks under the right hand wall in the final 12m high chamber.

Pete Smith took us out through the 1161 Malbujero entrance – rather unpleasant with a large boulder moving down at the entrance and a near vertical ascent up leaf litter and barbed wire to emerge at the surrounding fence.

bit of digging. Past this constriction the floor completely filled the passage and the draught disappeared. There is however a high level passage about 10' up which could be scaled with 2 sections of pole and the draught must be coming from there. The whole cave is trending towards RIVA and might go through the hills, or if it doubles back to Loca I & II there must be at least 1km of cave to be found.



X = stream sink

A = high level passage which should be bolted to.

1/4/16 Torca de Canastrillas above The Daddy Day Cave
 Centre. 30T 0450977 4802364 ↑179 Photos/Videos
 New number used: - 4407

1/4/16 Adlins Area Phil P, Pete E, Terry, Dave B, Tony L
 Digging + dropping shafts.

4123 Tony L descended to bottom - 22m a climb of further
 3m to bottom - choked no draught.

4125 - dry - good draught, needs more work Photo

4408 - Hole 51 gps 447679, 4794237 - needs capping &
 more bolter - looks choked.

[~~4409~~ - Last Hole gps 447558, 4794232 - found in Feb 2015 But
 4120 (not recorded, Tim Davis descended choked.)]

4410 - Dave's Hole gps 447548, 4794210

Needs work to get in, looks choked. ✓

4409 - Small Hole 4m drop - looks choked 447619, 4794221

31/3/16 - ~~2889~~ - ~~Cuba~~ ~~188~~ Vaca - Tom Howard, Alex
 Ritchie, Johnny Latimer.

VISITED VACA BY THE BIGMATE ENTRANCE WITH PLAN TO
 EXPLORE THE GREEN LEVEL. JOHN REAQUAINTED HIMSELF
 WITH THE ROUTE & AREA, & WE PUSHED VARIOUS SIDE
 PASSAGES AROUND THE BUZZING ^{GETS} CLOSER. SURVEYED BATCHES 16_04
 & 16_05. A GOOD TRIP TO LEARN ROUTE FINDING &
 REALISE WHAT AMOUNT OF PASSAGE IS TO YET TO BE SURVEYED.
 SURVEYS & DRAWINGS ALL IN SYSTEM.

Film was made of telegraph over and some passage. ✓

Torca de Canastillas

4407 ^{Tot} ~~Top~~ pot 1/4/16

Simon, Jude, Tom, Alex, Big Steve and a quick
visit from ~~Phil~~ + 2 little unr.
JUAN

^{Johans} ~~Simon~~ A sketchy traverse lead down the pot which
had free climbed recently but has become more
slippery so a ladder is advised.

A boulder at the bottom temporarily stopped progress that
was then snappered before the large chunk being hauled
out of the way.

A very loose passage led over boulders into a small
cross rift which choked at the bottom unfortunately. Perhaps
way on high boulders half way up the dry but would
need churning first.

1/4/16 2438/2439 - Ali-Angos.

Over in floor between the two entrances - continues choked down
under leading rock between the 2 entrances. Seems to be draughting in -
Need to check draught in hot weather.

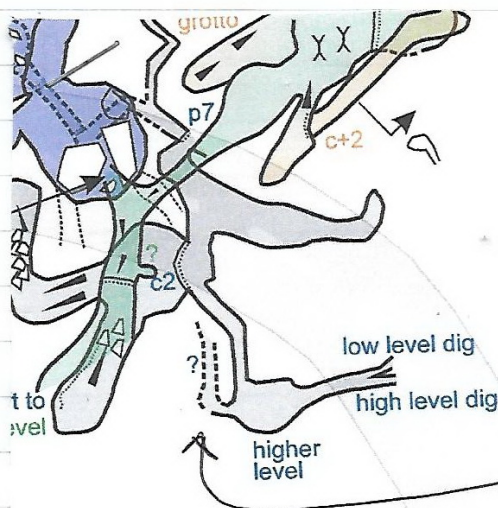
-AN.

TERRY W, Dave Bell, Tony Little, Chris Binding 30/3/16 Valina 0733

additional notes. Tube surveyed from chamber near
Pantabon Junction. Strong draught out. Chris described the
passage as 'The most hateful bit of cave I have ever been in!'

Tony wisely stayed out of it.

Tony looked at the narrow rifts heading west
from Ali station 31 and probably got half way to the passages
shown on the survey (Oct 2015) heading back from S.O.P.I. Low/awk-
rd & confusing. Heading east from Ali station 30 in the chamber are
several, crazy crawls (worth surveying) heading back to sump 1.



High level dig for 1/2 meter, leads to low level dig. There is small stream gully into low level dig.

A few bolts will be needed to do the climb.

Video + Photo from the trip

Taken

2/4/16 Terry, Tom, Alex, Phil + Hilons - Area below to most track

3674 5m e-w rift on surface. East end climb down under boulder to dig some 5m down - draughting out - worth a dig. Side rift to NW narrow goes for 15m dropping 7m to choke not worth digging narrow.

2895 412 - Poss locator 452293, 4794858 - Poss dig etc

3675 10m deep shaft-narrow at top under 3m down. Choked and no draught.

3676 Two holes to west join at bottom = choked. Hole to east 9m deep with slight draught out in air temp of 15°. Too narrow and will need capping to make more progress - needs check on draught in Hot weather.

3677 Choked shaft 5m to rift with bones - no go.

4411 ⁴¹³ 452451, 4794789 5m deep choked shaft

4412 ⁴²³ 452210, 4794875 Small hole covered with rocks. 1m to plastic bags

~~4413~~ ⁴¹⁷ 452204, 4794894 Depression full of bromeliads - not looked at

~~4414~~ ¹⁵ 452170, 4794901 Depression with holes under 66 blocks - not looked at in detail

1937

(39)

4415 ³⁸⁰ 452172, 4794991 - Small shaft 3-4m deep. No draught - choked
4416 ³⁷³ 452231, 4794982 - Small hole good draught out -- 2m to pass, old cone
4417 ³⁷⁷ 452237, 4794971 - Rock shelter E of 4416 - Good ^{need Snappers} dig strong draught out
4418 ³⁷⁵ 452270, 4794954 - Cave by tree. Right 4m to mud choke with dig. ^{Small} draught out
4419 ⁴⁰⁰ 452494, 4794881 - Shaft 15m E of ~~380~~ 3680 - 7m deep to choke
3680 - also descended ^{2m deep}

SITE 4046

CUEVA DEL ARROYO DE
CANASTRILLAS

(DADDY DAY CARE CENTER)

DATE 3.4.2016

PRESENT, STEVE MARTIN

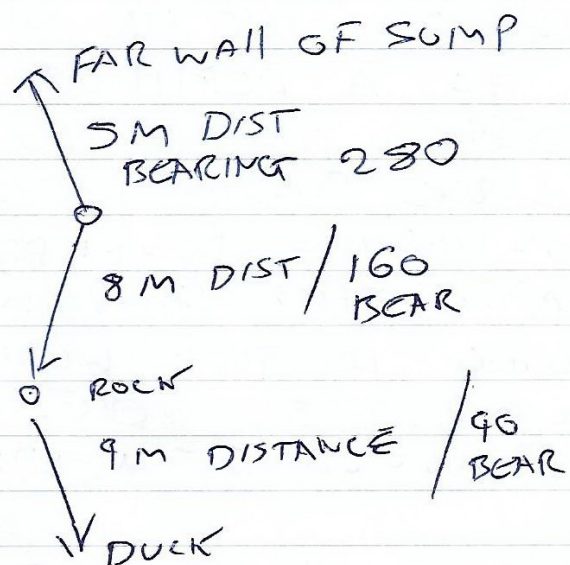
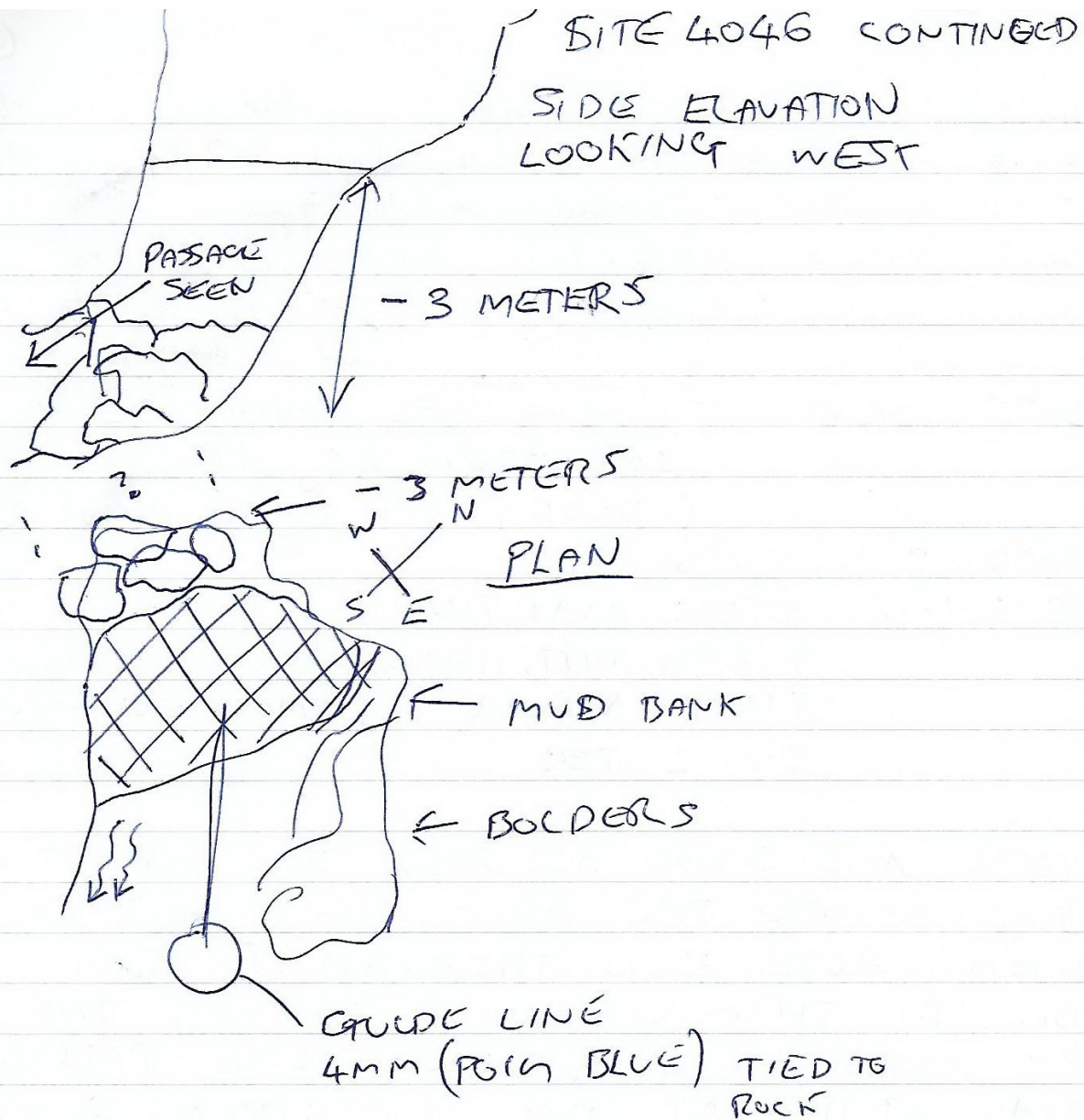
TERRY WHITTAKER

IAN CHARDLER (FILMING ENTRANCE)

JIM LISTER

TERRY AND STEVE ASSISTED JIM TO KIT UP, JUST BEFORE THE DUCK WHICH HAS AN 11MM ROPE RUN THROUGH IT. JIM DIVED THROUGH AND ENTERED THE 20 METER LONG WALKING SIZE PASSAGE THAT ENDS AT THE UP STREAM SUMP. THE SUMP WAS CRYSTAL CLEAR, THE DIVER HAD A GOOD LOOK AROUND BEFORE DESCENDING TO A DEPTH OF -3.2 METRE. WHERE THE STEEPLY DESCENDING PASSAGE IS BLOCKED BY LARGE BOULDERS, THE PASSAGE CAN BE SEEN CONTINUING DOWNWARDS THROUGH THE GAPS. THIS SUMP WOULD BE WORTH DIGGING IF THERE WERE SO MANY OPEN SUMP ELSE WERE, A TIREPORE AND LOTS OF TRIPS WOULD BE NEEDED TO DO THIS.

THE DOWN STREAM SUMP WAS NOT DIVED JIM LISTER. MANY THANKS TO EVERY ONE.



3/4-2016 Pete Nielsen, Torben Redde, Pete, Alley.
Surface Trip / Shaft Boring

#928 Seems to be covered by the farmer. No entrance

#2022 - Same...

#2023 Two long water pipes marking the shaft.
5m decent to the bottom, with no way on

#2024 ~~At 4x1m rift descended 4m for a squeeze and a 5m horizontal crawl, - which just ends...~~
At 4x1m rift descended 4m for a squeeze and a 5m horizontal crawl, - which just ends...

#3585 and 2027 - few meter deep holes

In the area, which was recently burnt, we found several other holes, only few meters deep.

4/4/16 Ali, Angus, Richard Abbott, Spike, Amy
Planned trip to Cateen curtailed due to fire on hillside
So went in Rindda - surveyed RH route from entrance series to
Staked Moh, & Sanatogen to 3 - climb down incl various side
passages.

Lakes in entrance high but possible.

Bathe 16-01 → 16-04

157.47 71.94

4 APRIL 2016

RIAMIO

SITE: 575

PRESENT: PHIL PAPPARD

TERRY WHITTAKER

JIM LISTER

RECON DIVE TO LEARN ENTRANCE
SQUEEZE/ RIFT AND TO CHECK DIVE
LINE NOT WASHED OUT
FILM OF SURFACE AND DIVE,
JIM LISTER

4/4/16 Peter E / Torben / Peter W

3771 Removed a large quantity of rock from narrow rift to give easy access, but draught coming from small gaps between blocks. Dig now has a paved area below entrance.
SEE VIDEO FROM 3771

4414 Dig open small tube 3m to eye hole looks larger beyond.
GPS 449576, 4796259
Alt 348

4430 Shaft descended 3 by 4 metres wide & under
449475, 4796275 Alt 364

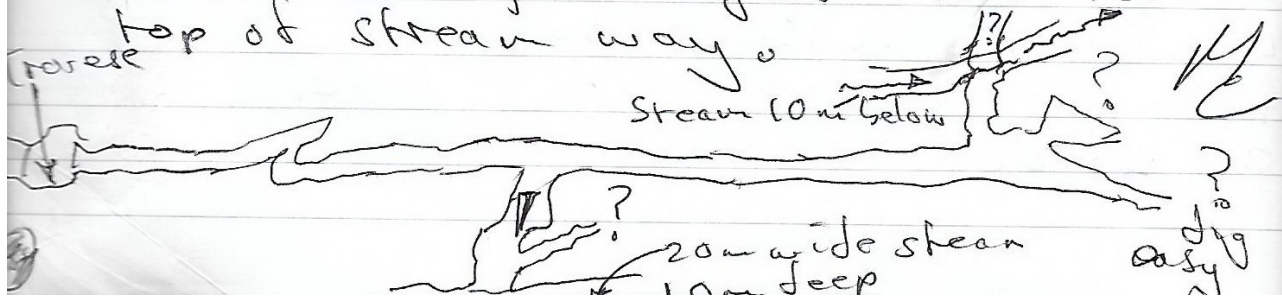
No way on. small dig next to shaft was too tight after Sun.

~~4446~~ 2/4/16 Valline

Peter E, Dave B, Ali, Tony

Returned to traverse bolted previously by Torben, Peter + Peter

Passage continued with draught becoming easier 4/5m wide 1/2m high ending at easy dig. Sloping passage to right gives good view of streamway 20m wide and high between samples 5 and 6. left, near dig also gives access to top of stream way.

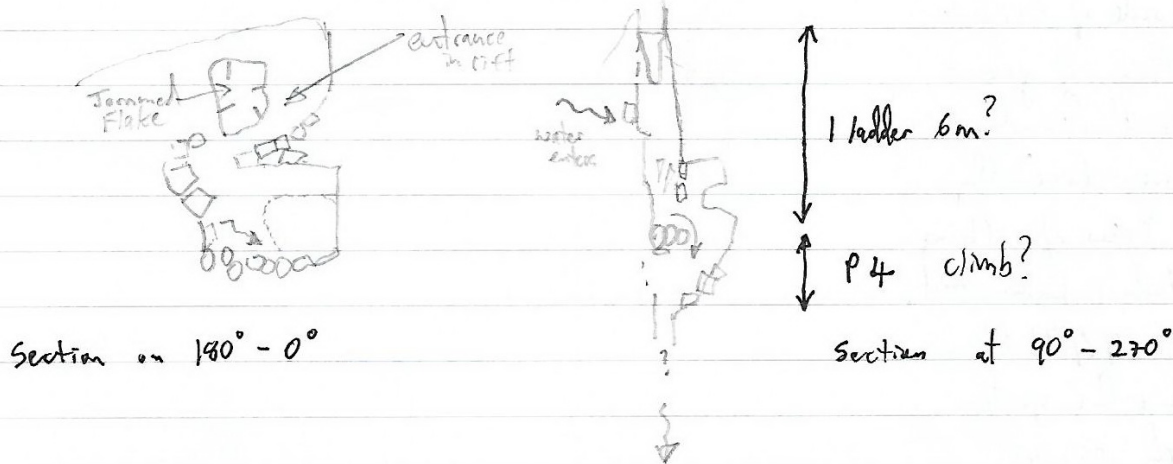


5/4/2016 Round Matienzo trip - Phil, Hilary, Terry, Peter F
 To Piono resurgence to check on dike - looked at 3223 took photo
 and at 1800 Fridge door cave - seems not flooded as no water heard at
 ent. To 713 Aguapaz & placed detector in middle entrance to check
 water is still negative. Then to 4246 (dike/cave at Hoyon), water
 running on surface & sinks to north of 4385. Terry descended on ^{see sketch} ladder below
 to where a second drop need a further ladder & some beltdr. Water in pond
 here & dye can be placed for water trace. On way to Hoyon
 looked at 4401, took photo - does look like worth a dike. Small
 water flow out of ramp.

5/4/2016 - Ali, Angus, Rachel Abbott. 0246 0264
 Resurveyed entrance area of Green - 634 m surveyed
 includes 175.85 m "new"

2/4/16 Jethna - SE & AN resurveyed from main passage to foot of
 Double Dike 97 m (nothing new).

5/4/2016 ^{Nr Hoyon} 4246 (see above)



3/4 Dave Bell, Richard Abbott, Spike, Amy

Quick evening trip in to Uzeke to Flashbulb Mall.

6/4/16 Phil & Hilary Detectors for Ityon test.

1. Aganaz - negative - left-in for test. 713

2. 2364 - detector in - same place as last time

3. 0040 - Comedionle - r.h.s looking in

4. In of two streams below 0035 Arenal

5. 0791 Motiro Res - two detectors in CHS.

6. Just upstream of 0791 to test stream above.

6/4/16 SITE 575 RIANIO RESURGENCE

PRESENT: STEVE MARTIN

PHIL PAPPARD

PETE

TERRY

JIM LISTER

CHECKED DIVE LINE TO LIMIT OF EXPLORATION, TIED NEW LINE REEL TO ROCK EYE HOLE INCORPORATING ORIGINAL LINE, CONTINUED STRAIGHT FORWARD AS VIZ ONLY 3 FT, AREA TO RIGHT NEEDS LOOKING AT, CROSS RIFT REACHED WITH AIR SPACE (FIRST AIR SPACE) 30 FT HIGH 7 FT WIDE 50 FT LONG, POSSIBLE CRAWLS LEADING OFF AT ROOF LEVEL, GUIDE LINE TIED 8 FT TO LARGE STAL.

6/4/2016 SITE 575 RIANIO RESURGENCE

EVENING DIVE

PRESENT JIM LISTER

DIVED TO END OF LINE TIED OF IN
LARGE AIR BELL / CROSS RIFT.

SEARCHED FOR PASSAGE FOR SOME
TIME, PASSAGE CONTINUES AT LEFT
HAND END OF RIFT AT RIGHT ANGLE
TO LINE LOW BUT VERY WIDE PASSAGE
WITH MUD FLOOR FOLLOWED TO WIDE
TO SEE SIDES.

RIPPLES AND GROOVE IN MUD / FINE SAND
FOLLOWED PASSAGE CHANGES TO ROCK
3M BY 2M PASSAGE WITH CLEAR WATER
COMPARED TO THIS POINT, FLOOR CHANGES
TO A COMPACT GRAVEL / ROCK A LONG
GENERAL RM BEND FOLLOWED, END OF
REEF LINE SNOOPY LOOPED TO STONE
PROJECTION ON LEFT HAND SIDE OF
PASSAGE ON FLOOR.

6th April 2016

Juan and Phil Parker on a 4 hour digging and photography trip in and out of the Orillonzuco (1162) entrance. Over 100 shots taken; some might be OK. Had a half hour proddle at the stream sink in the large chamber near the end.

The water sinks in gravel and cobbles along a 2 - 3m long "front" under the hading wall. A proper digging team would take in a large crowbar to perhaps open up a proper sink. If the site starts to develop it may be necessary to cut back and shore up the mud bank that currently constricts the digging area. (Video)

As no water was seen or heard a week ago in the final small chamber with the climb, and the resurgence is 1100m away in a straight line and 80m below, this sink deserves a bit of work.

6/4/16 COTERON - 0274

AMY B, SPIKE & LICH ABBOTT

Continued resurvey from end of yesterday onto top of pitch.

Dugged on way out.

28/3/16 0446273 4798939. (4434) ^{↑146} CURS.C PULL P
 Small choked stream sink 1m deep possible bed
 rock on one side. Takes 2 streams in wet weather,
 dry. ~~6~~ (4173) MORE DUGGED.

29/3/16 (4270) CALLED OUT BOUNDER SAPPED SHAF
 BUT ADDER TO SHOOT TO REACH BOTTOM.

30/3/16 (4270) ADDED MORE ADDER FULL PAPER + DAVE
 MURKIN INFO BOUNDER FILLED CRAWLER, NO WAY ON.

2 RIFTS IN FLOOR AT BOTTOM BOTH TOO NARROW.

DEPTH TO BOTTOM 20m (PITCH 9m) LENGTH 32m.

31/3/16 WET DAY DRIVE TO COBADA DAWGHOUSE
 SNAKEHOLE SEEN (4435) 448151 4797439 ^{↑200 AC}
 DIG. ^{↑299}

1/4/16 (4258) NOW 2m DEEP STILL NO BEDROCK SHOWN.

(4436) HOLE IN SIDE OF TRACK IN CLEARED AREA ^{↑218}

2m DEEP DIG. 447308 4797276 ^{218m AC}

(4437) HOLE IN CLEARED AREA 447311 4797289 ^{↑222}

(4438) HOLE IN CLEARED AREA 447322 4797321 ^{↑228}

(4439) Small 2m long passage below boulders, below
 horizontal line of large boulders in gully. NO DRAGNET

0447303 4797361 ^{↑216}

^{↑227}

2/4/16 COBADA AREA (4440) 447754 4797762 ^{↑225m}

DRAGNETS CAUSE IN UNDER LARGE BOUNDER TOO SHAW WITHOUT

DRAGNETS. VANDER (613) STREAM SINK (4441) NOTED ON

WAY DOWN VALLEY TO (613) (0447745 4797860)

DIDN'T REAPPEAR FURTHER DOWN VALLEY.

^{↑203}

3/4/16 DUGGED IN (4435) 4/4/16 CONTINUED AT (4435)

NOW 3m DEEP AND DRAGNETS SHOTS DOWN FURTHER 3m?

6/4/16 2 Holes found near BARRIO DE AARUA

(4442) 444320 4799444 108 - ↑ 105

(4443) 444350 4799422 98 - ↑ 99

both DMS -

course -

Photos for 4436, 4437, 4438, 4440, 4442, 4443

Site 4144 Survey file in surveys folder.

7/4/16 4246 CAVE (ITAYÓN II) Peter S + Phil P.
Peter managed to climb down 2nd drop after 1st pitch - two
routes pretty easy. Two streams come in here in wet weather
the one at bottom of 1st & a second down flowstone. Base
has two holes that drop down 3m + to continuation. Needs a
little work (snapper/cross) to make access easy. Dye placed
in at about 2:30 pm. (5lt) ✓

November 2015 Chris Cunn - Phil Porter - Nigel Easton

Date	Site	Easting	Northing	source	alt	Notes
09-Nov-15	3420					Nigel and Phil looked in not passable but draughting out
09-Nov-15	2751					Chris and Phil looked at draughting out
09-Nov-15	Not worth a number yet	446769	4796265	map		Just to NW of 2751 is obvious large shake with trees in the bottom, in western corner are black bags and rocks, at the righthand side of these rocks a cool outward draught was felt. Would require digging, but worth a quick look if farmer ok, as its in a cow field.
09-Nov-15	4258	446749	4796314	gps	357	A 0.75m diameter recent collapse in open field over 1m deep to rock and sandy mud blockage
10-Nov-15	3214					Dry but watch out for bull in field. Phil followed passage to sharp lefthand bend that would involve awkward capping for a small person to progress. Draughting out slightly
10-Nov-15	3268					dig now needs snapper to break part of wall off, left rope on as a pull up, need to take toothbrush and grease for 8mm bolt and spit on short pitch down. No hanger on here.
11-Nov-15	4260	450870	4800190	872,186gps at opp side of road	150	Photos of hole by West side of road between Hornedo and Riano small mud filled phreatic tube would need digging to progress
11-Nov-15	4173					Need to check GPS. Digging in draughting, continuing tube, more digging required to progress.
12-Nov-15	4188					2 bolts in at roof level for ladder so angle of rest slope down was then available to stack rocks on, allowing bottom of slope to be dug under flowstone. This gave a couple of metres to where the draught came in from a small inlet passage on the right. Further prospects look poor, written off.
13-Nov-15	4261	445385	4800590	map	185	Small resurgence cave, water supply, not explored. On way to this a hole blocked by 2 or more tyres was seen in field to right of track not worth a number at this time.
13-Nov-15	4262	445493	4800680	map	175	On way back from thrashing into 3106 and 3896 this small cave /dig was seen next to gate hole in broken down field wall. Uninspiring.
14-Nov-15	4263	452157	4800368	wp17	285	Collapse feature/dig at side of bulldozed track in recently cleared area
14-Nov-15	2650					Probably 2650, new entrance photo following clearing. A shaft exists as a dig, under an old white bag. Garys earlier photo of Paul shows a black bag but reasonably certain it's the same place as there isnt a lot else around to see now its cleared.
15-Nov-15	4264	444785	4799646		163	Open shaft to right of and just above track at gate into cleared area containing a mine and caves
15-Nov-15	4265	444569	4799621		188 189?	Small shaft in clints with brambles opens out 1m down depth unknown unexplored. Up and right of this shaft along obvious joint line is a gorse filled shakehole at 444585 4799631 which might repay investigation in thicker gear than shorts and t shirt.
15-Nov-15	4266	444788	4799661	map	165	Truncated cave passage with stal in open field now appears as an undercut.
15-Nov-15	4267	444711	4799661	map/photo	180	Small cave unexplored inside small fenced area with citrus trees.
16-Nov-15	4264					shaft is about 8-10m deep to rift blocked with rocks in back right hand corner.
16-Nov-15	4268	444825	4799444	20m acc not GPS'd	108	dig into bedding that will probably join with tube unexplored, these 2 features are within a few metres of one another
16-Nov-15	4269	444788	4799421		115 129	Large mine entrance just above footpath splits into 2 passages in daylight left is blind after a few metres whilst right descends steeply to a pool where work seems to have stopped. Undescended.
17-Nov-15	3106					draughting out but draught reversed later after front came over. Needs careful digging with shovel to progress. Loose boulders.
18-Nov-15	4259					
19 and 20	4259	445706	4799230	10m acc not gps'd	115	Hole on bottom track would need snappers to continue along narrow rift draughts out
21-Nov-15						Very wet day drove to Matienzo, up Ason gorge and over 2 passes with snow to high Miera back down to LC.
22-Nov-15						Another wet day
23-Nov-15	4270	445793	4799145	wp26	137	Narrow rift with boulder in entrance. Dig

165X

602

a

d

105

7,4 2016 SITE 0575 RIANIO RESURGAMCO
PRESENT: STEVE MARTIN
JIM LISTER

JPL DIVED TO YESTERDAYS LIMIT (6.4.2016)
AND TIED ON NEW 200M (BLACK PLASTIC)
DIVE REEL, AND CONTINUED LAYING LINE
USING THE SIIT SCREWS STEVE AND PHIL PAPP
HAD MADE THAT MORNING WHILST I WAS
FILLING CYLINDERS, THE SIDE OF THE
PASSAGE WERE LOST DUE TO POOR VIZ IN
THE AREA, THE V-SHAPPED TRENCH IN
THE MUD/SILT FLOOR WAS FOLLOWED, THE
GUIDE LINE IN THIS SECTION IS WHITE 4MM
MARKED EVERY 5 METERS BY BLACK INK,
THE LINE WAS TIED OFF 162 METERS PAST
JT AND DANS LIMIT, A SURVEY OF THE NEW
LINE WAS DONE THE FULL LENGTH. (162m)

8,4,2016 SITE 0575

PRESENT: STEVE MARTIN
JIM LISTER

DIVE CALLED OFF, ZERO VIZ IN
SUMP POOL DUE TO HEAVY RAIN.

9/4/2016

0575 RIANIO RESURGANCE

PRESENT: PHIL PAPPARD
JIM LISTER

PHIL VISITED THE SITE TO INSPECT THE WATER AND FOUND IT TO BE CLEAR, JPL WAS INFORMED AND DROVE OVER AND FOUND THE SUMP POOL STILL CLEAR, ON ENTERING THE MAIN PASSAGE THE VIZ WAS REDUCED TO 1 FT/30 CM. THE TIE OFF POINT WAS REACHED AND A BEARING WAS TAKEN IN DETERIORATING CONDITIONS, THE AIR BELLY RIFT WAS PAST AND THE DIVER DECIDED TO USE THE 12 SILT SCREWS TO THE GUIDE LINE AS LAYING LINE IN THE NOW ZERO VISIBILITY WAS NOT AN OPTION, (TO ADD EXTRA SECURITY) THE LINE REEL WAS RECOVERED AND THE LINE REMOVED 10 METERS DISTANCE BACK FROM THE TIE OFF SILT SCREW WAS MORE SECURE, THE LINE REEL AND 4 SILT SCREWS WERE PLACED IN THE AIR BELLY RIFT WHERE THE REEL WAS TIED OFF TO A STACAMITE, THE DIVER THEN DIVED OUT.

JIM LISTER (TIRED)

1445 Pozo Negro Riano. Phil P.

Water found to entro just above pool - video - not looked at ~~in detail~~ close up.

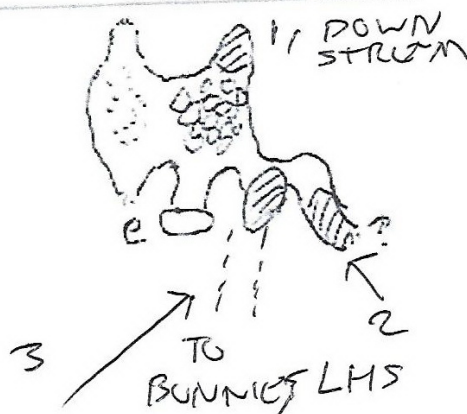
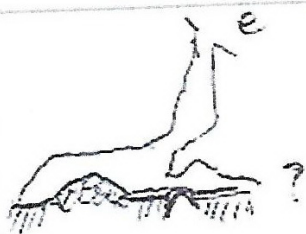
1900 FRIDGE DOOR CAVE

PRESENT: PHIL PAPPARD
JIM LISTER

Sumps at base of pitch dived,

- 1, DOWN STREAM, TAKING A LOT OF WATER BLOCKED BY BOULDERS
- 2, UPSTREAM LEFT HAND SIDE POOL BLANK AFTER 2 METERS
- 3, UPSTREAM, UNDER WAY IN, DIVED FOR 7 METERS, (DUCK LEADING TO DRY PASSAGE IN SUMMER) DIVER TURNED AROUND AS BEHIND "BONNIES N BEER". PASSAGE SUMPED TO ROOF.

JIM LISTER



9th April 2016. Pete + Juan drove over to La Cavada to pick up John Southworth and Dave Miller. Objective: to survey + photo the Finjancas caves at Hoznayo. Site 4001 and 4444. Started in the "dry one". Climbed down middle entrance on scar face to reach old pueas + trenches. Possible site for Cluechi as there are many snail shells, some embedded in calcite. Flat out at end over old gours ~~and~~ in a wide area that closes in. Near the entrance a narrow rift was found to have a small stream in the base, 2.4m down. A leaf was thrown down here. 79m surveyed, photos + video.

Then to 4001. Walking upstream then crouching. Eventually the leaf was seen where the stream passage became smaller. All side passages and rifts were inspected including a "snelly inlet" (sewage) that appears to end under a building on the hill above. 220m surveyed. Photos + video.

New grid reference for 4001 (main, largest entrance) 0442616 4804790

↑ 38?

10/4/2016 Juan, Penny + Phil P. picking up + testing dye detectors. On way looked at 0575, Rio de Resurgencia - much clearer, but still not "crystal". Fuente Aguonaz ⁷¹³ negative, much more flow well over 1 cume. ~~Fuente~~ The water here was very muddy + worse than 0575. Fuente Molino ⁽²⁵⁶⁴⁾ at Cavada, negative a little more flow than 4 days before, about 150 l/s. Molino Resurgencia negative, higher flow + very clear (crystal) flow 400 l/sec. Stream ~~up~~ above Molino negative, detects more muddy than Molino. Comedionti strongly positive, clear water + high flow about 1 cume. Stream below Arenal, negative, clear flow about 400 l/sec with a very small flow from below Arenal most water from stream in valley to north. All detectors replaced with new detectors for testing in a few days. Flow time from Hoznayo to Comedionti was less than 4 days, in high flow.

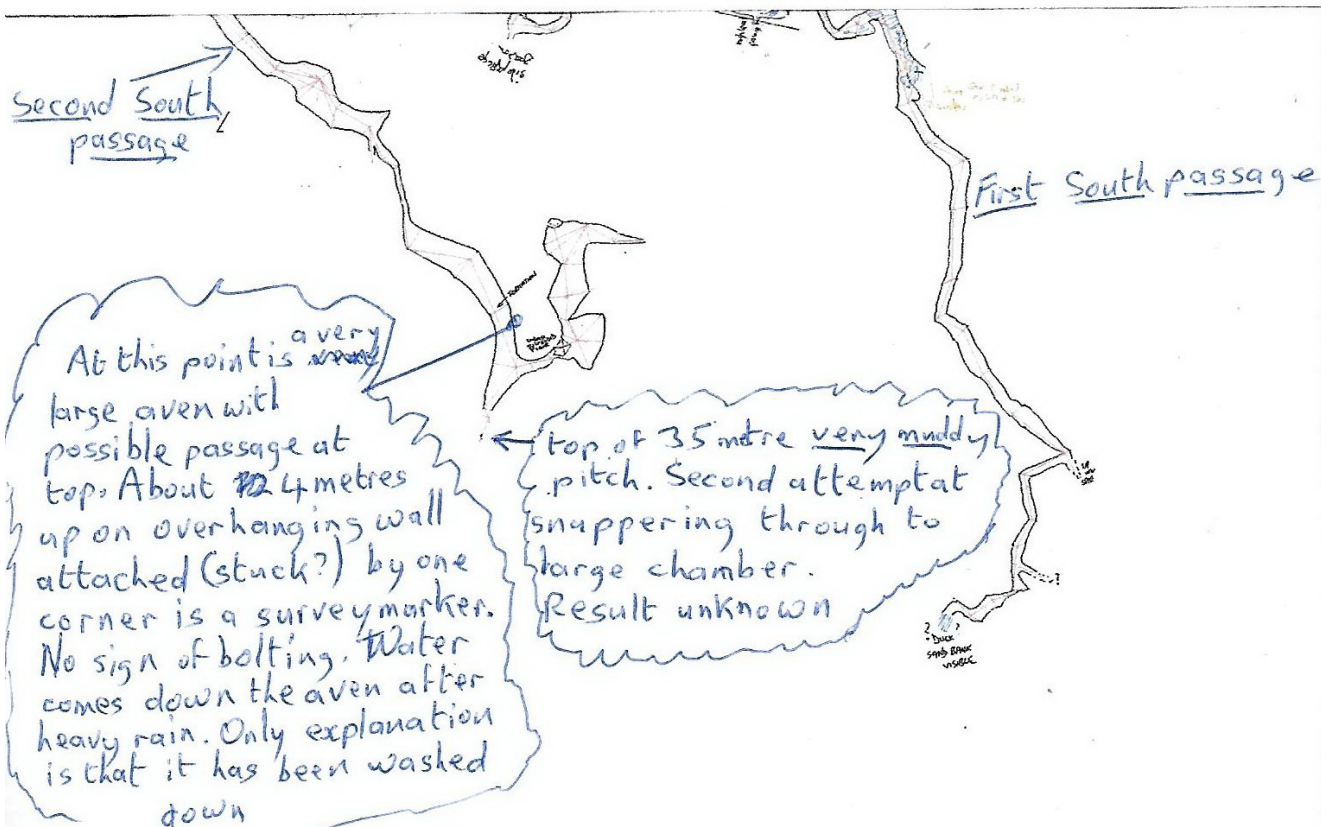
Saturday 9th April 2016

El Cubillón (2538)

Alf Latham, Phil Goodwin

To the end of second South Passage and up the muddy pitch.
First snappering had no effect. Two new snappers used.
Result unknown.

Returned to find bottom pitch blocked by waterfall. Attempt to go up rebuffed by strength and coldness of the water. About 2 hours later with slightly lower flow, and after many failed attempts at avoiding the flow, a method was devised to get up the pitch. The first one up managed to clear a hole in the passage floor to divert the water for the second person. Then about an hour was spent clearing part of the blockage to lower the water level in the crawl sufficiently to get through. The bottom of the next pitch was also very wet.



13th April 2016

Juan up early and underground by 0945 in **Cueva Injanas 2 (site 4444)** to collect missed survey data from last Saturday, 9th. Also took photos of the recent snail deposits and calcified snail "nests" for Chuchi. These deposits are above and below the soil slope close to Injanas 1. GPS'd the entrance more carefully and then to **Injanas 1 (site 4001)** to collect more survey info and take more photos.

Final grid references for

4001: 30T 442602 4804798 altitude 40m

~~4444: 30T 442526 4804824 altitude 51m~~ *adjust this with survey.*

In the afternoon, toured the risings with Penny to collect OB cotton wool detectors put in last Sunday, 10th. Ended up at Pete's house to check for fluorescence. The detectors at **Fuente Aguanaz 713**, **Fuente Molino (La Cavada) 2364**, **Fuente Molino 791** and upstream @ Bustablado and the detector below **Arenal 0035** were all negative. The **Comediante 0040** detector was again positive but not as bright as last time. (Photos taken at Arenal)

At Fuente Aguanaz, we had a brief look along the west side of the approach road to the car park. **Site 4447** ~~4448~~ is a probably choked hole about 2m deep on the bank at the road side. (Photos). A proper look at this side of the river might discover an "Invisible 2".

From: 'Alasdair Neill' via Matienzo Caves <matienzocaves@googlegroups.com>

To: Rupert S <r.skorupka@btinternet.com>

Cc: Matienzo Caves <matienzocaves@googlegroups.com>

Subject: Re: Vallina survey

Date: Wed, Apr 13, 2016 9:27 am

There were two spots where the streamway was seen, I only saw the further downstream one. Apparently at the other which appeared to be at a bend a disto shot showed it to be 20m wide there (I am not sure if that would be the width at stream level). At the spot I saw it we dropped down a slope into a passage forming a roof tube to the stream passage. This roof passage is quite large, perhaps 5-10m wide and high, but one could only progress a short distance either way to where there were drops to cross really requiring some protection. The streamway below appeared narrower & I think they measured the drop to it as about 10m. There also seemed to be a passage of some sort on the other side of the streamway at the level I came in, requiring a crossing of precarious boulders really again requiring some protection.

I went out early on that trip, the others I believe left it rigged planning another trip which never happened so it's all still rigged.

It would help hugely in drawing up the survey to know exactly where the in the streamway the two points of entry were, but I suppose that will only be possible by coming in from above.

On Saturday, 9 April 2016, 14:29, Rupert S <r.skorupka@btinternet.com> wrote:

Hi Ali - I can wait til you get it all drawn up thanks. I was interested that Pete texted the streamway you met was "20 metres high and wide" - is this a bit of poetic license? Martin describes it as 15 m high at most, and nothing like that massive.

Are you planning on returning to drop the pitch into it, as there are several unexplored inlets between sumps 5 and 6?

Did you remove the rope? Let me know what needs bringing back in as I will be returning before too long.

cheers, Rupe



From: Alasdair Neill
Sent: Friday, April 08, 2016 9:54 AM
To: Rupert S.
Subject: Vallina survey

Pete said he had a message from you about this, I have all the data & drawings with me but it will take a while to get this drawn up due to various issues with the survey that need sorting out. We now have a survex file in which we linked the drops to the streamway with where we thought they tie in, can let you have a copy if you wish.
Ali.

—
You received this message because you are subscribed to the Google Groups "Matienzo Caves" group. To unsubscribe from this group and stop receiving emails from it, send an email to matienzocaves+unsubscribe@googlegroups.com. To post to this group, send email to matienzocaves@googlegroups.com. Visit this group at <https://groups.google.com/group/matienzocaves>.

From: Alasdair Neill <alasdairneill@yahoo.co.uk>
To: Juan Corrin <uzueka@aol.com>; Phil and Hilary <papard51@gmail.com>
Subject: Renada & Comediante
Date: Wed, Apr 13, 2016 9:50 am
Attachments: 0048-2016-all.SVX (88K), 0040 resurvey to e2016.pdf (120K), 0040 resurvey to e2016.cdr (150K)

Attached are:
a revised 0048 survex file with old data now resurveyed taken out.

note that there may be some side passages we surveyed this Easter which may be "new" as they are not in the old survex data, but I do not have a drawn survey (?only on graph paper) to check against. Length would not be significant. It seems there are plenty more unsurveyed branches to look at in the Sanatogen area.

survey of Comediante above water level, which is probably now pretty well finished.

Re importing centreline into corel, I have now found the following method which works best for me (it needs to be able to use dxf files in survex):
open a separate corel file and import the dxf survex file into it
save as a pdf covering the area of the cave
import this pdf into the main corel file.
This removes the annoying problem of having stray objects in the dxf file well outside the area of the cave.

Re the Vallina survey, as there are two big loops now which are not fully defined (round the sumps & new passage, & between the two entrances - the locations for the bottom entrance surface stations need confirming) I will probably for now just continue drawing the new stuff up as a separate file.

From: Alasdair Neill <alasdairneill@yahoo.co.uk>

To: Juan Corrin <uzueka@aol.com>; Phil and Hilary <papard51@gmail.com>

Subject: Renada etc.

Date: Fri, Apr 15, 2016 9:17 am

Attachments: 0048-2016-all.SVX (95K)

Just worked out the probably "new" bits from the Renada trip we did - 30m "new" out of total 424.11m in 4 batches.

I have now added the files covering the Squirrels area into the main survey file - please could they stay that way, it is a real pain using a file with lots of "includes" outside the main system as one must ";" out includes for the file to work, & then (as in this case) must remember to take out the ";" again when it goes back into the system, as hadn't happened in this case. It took me all yesterday afternoon (fortunately a day off work) to sort this one out.

MATIENZO - Easter 2016

Phil Goodwin (PG), Alf Latham (AL), Dave Milner (DM) & John Southworth (JS)

24.03.16 Detector placed near road bridge in Riano river, downstream of Wild Mare rising, for benchmarking prior to introducing dye at Duck Pond sink (1976).

25.03.16 Site 4406, Navajeda. 0443836 4801672 Alt. 74m PG, AL, DM & JS

Entrance shaft under rock face just inside wooded area, approx 20m above road. 8m shaft leading to short series of interconnecting passages. Site surveyed and details. submitted by PG. Photos – DM

Site 4420, Navajeda. 0443828 4801675 Alt 58m DM & JS

Low entrance in rock face near road. Low, wide entrance, quickly branching into two short, low passages with no obvious way on. Total length 8m. Photos – DM

Detector from Riano river checked and replaced. Further benchmarking detector placed in Verde watercourse. Detectors placed at Aguanaz (0713) (one upstream, and one downstream of Invisible resurgence) and at La Cavada resurgence. (Benchmarking detectors previous done by expedition members) La Cavada resurgence 2364.

26.03.16 Benchmark detector from Verde watercourse replaced.

Visited **site 4264**, at 0444764 4799634 Alt 175m (Previously reported by Chris Camm?). 10m natural shaft, enlarged by miners, descended to run-in of boulders at base. No digging prospects. Photos - DM

Site 4269 visited by DM & JS at 04444775 4799433 Alt 123m (also previously reported by Chris Camm?). Large mined entrance with two passages. Left hand 8m to blank wall, and right hand 8m to climb down of 6m to small pool with no way on. Photos – DM

Site 4421, Barrio de Arriba, found by PG & AL at 0444734 4799436 Alt 155m.

Natural cave in vegetated gulley, 2 to 3m across, which becomes deeper and shelves under an ancient roof with smashed stalagmite column. A stalagmite barrier has been smashed, leading immediately to a 10m pitch to a sloping rubble floor. A rift leads into the hill but progress is stopped after 4m by a thick flow of calcite on the left wall. The rift is 5m high, with walls adorned with stalactites, helectites and cave popcorn. A stone thrown into a hole beyond the flow produces an echoing 'plop'. Slight draught. Photos – PG

27.03.16 Optical brightener put into Duck Pond sink (1976) at 11.30 a.m. after overnight rain (no water flowing beyond sink) PG, DM & JS. Photos – JS

Visited **site 3969**, which comprises a low, damp resurgence crawl under sandstone face. Not pursued. Photos – DM

Site 3953 checked by PG & DM. Old, water worn rift, approx 8m in length, with no way on. Photos – PG

Site 3954 checked by JS. Cave in sandstone outcrop approx 20m length.

Found **site 4423**, San Antonio at 0447287 4802701 Alt 167m DM & JS

28.03.16 PG,AL, DM & JS returned to site **4423** with tackle. 3.5m diam. shaft found to be 8.5m deep, with adjoining chamber at base of 6m x 3.5m x 5m high. No way on. Photos – DM
Found site **4424**, San Antonio, at 0447341 4802745 Alt 167. Steep descent, 9m, in limestone sided depression, to daylight shaft. Further 1m wide descending rift to small, high, chamber, no way on. Total length 6m. Photos – JS.
Found site **4425**, San Antonio, at 0447359 4802741 Alt. 167m. Hading rift climb of 12m, to boulder strewn floor. Further very tight 3m drop through boulders not descended. Photos – JS
New detector placed in main flow upstream of La Cavada rising (**2364**). Upstream Aguanaz (**0713**) detector checked and found negative.

29.03.16 Visited site **1561** – PG,AL, DM & JS. (en route met Forestry Officer, David, and showed him entrance series). Line survey done from track to pitch into lower series (Pozo 8). Also did line survey of lower series. Survey info PG. Photos – JS

Found site **4422**, Barrio de Arriba, at 0444765 4799592 Alt 174m. PG, AL & JS. Potential dig under rock outcrop – good draught. Upper Aguanaz detector (**0713**) checked at 1600 – Negative result.

30.03.16 Site **4422** revisited by PG, AL, DM & JS. Entrance enlarged slightly to reveal 1.5m drop onto boulder pile. Slope down into small chamber. No way on. Very little draught on this visit. Total length 3m. Photos – PG & JS. All detectors checked and found negative.

31.03.16 Day off. Heavy rain all day. Water courses all in flood.

01.04.16 PG, AL, DM & JS checked out the following known sites:-

3952 – Accessible, but wet and very muddy – not descended.

4029 – 5m open pitch to slot in floor. Further 1.5m slope leading to narrowing rift on right, 2m in length. Left, 2.5m to small chamber with no way on. No photos taken.

4034 – Entrance to 4.2m shaft too small to descend without moving/capping surrounding rocks which would then make hole difficult to cover. Photos – DM

4033 – 8m shaft to roomy base, with further 1.5m drop. No way on. No photos taken.

4063 – New hole excavated 1m from original 'dig' site. 6.5m narrow shaft, choked at base. Photos – JS
In addition to the above two new sites were found:-

4426, Navajeda at 0443804 4800475 Alt 203m. Entrance in small depression up the side of much larger one. 3m choked rift. Photo – JS

At base of this larger depression are some old solution tubes, one of which provides a 5m 'through trip'. No photo taken

4427, Navajeda ?, at 0443803 4800295 Alt 233m Open hole in woodland area. 4m deep earth collapse, with no way on. Photos – JS

02.04.16

DM & JS went for walk up the Bencarno valley. Two new dig sites were found:-

4428 at 0446007 4795643 Alt 292. Low crawl requires further work, draughting. Photos - JS

4429 at 0445955 4795616 Alt 303. Small stream issuing from under boulder with outward draught. Photos – JS

PG & AL went to site **2538** (El Cubillon). Passage to last pitch in entrance series had not changed. Climbed previously bolted aven at end of Upper South passage. Removed 'stal' next to small hole to reveal good view of substantial chamber beyond. Snappers used to enlarge way on from safety of bottom of climb. Result to be viewed next trip.

Detectors changed with the following results:-

0713 Upper Aguanaz at 1715hrs – Positive

Lower Aguanaz at 1730hrs – Positive

2364 La Cavada rising at 1800hrs – Negative

La Cavada main river at 1815hrs – Negative

F
S
T
S

H
I
t
C
J

03.04.16

DM & JS. Riano detector removed – Negative result.

Site 4001 visited and partially explored in walking gear. Possible alternative entrance found further around buttress at 0442532 4804832 Alt 49m. (4444 Injanas 2)

04.04.16.

PG, AL, DM & JS. Final detector removed from Verde stream - Negative result. Remaining replacement detectors from Aguanaz (x2) and La Cavada (x2) also removed. Visited site 4253 which proved to be a 6m deep rift shaft. One end of rift is a chamber which chokes. Opposite end is squeeze to descending rift, which also chokes. Total depth 12m, length 12m. Photos – DM

N.B. – Met the very friendly farmer for this area, who said there was another hole nearby, "covered with rocks", but we were all unable to find it.

Site 4255 visited. 3m descent over mattress, with further 3m climb down through loose blocks to choke.

05.04.16

Site 4144. PG & DM began survey of system and completed approx 75%. JS digging at the end of SE passage, more work required. AL exploring system.

06.04.16

Day off in Santander

07.04.16

Wet day. JS found walk in cave entrance taking large stream (out of area) adjacent to Water Treatment plant at Lombada, La cavada SIGPAC 442768 4799187 (542)

08.04.16

Site 4251. System resurveyed by PG and DM. Dinghy crossing of 'lake' by JS to dig in mudbank on far side – hard, slow progress in clay/silt deposits. AL aided lake crossing and then fell asleep. N.B. – Strong draught in system but appeared to 'disappear' in lake area.

09.04.16

DM & JS revisited site 4001 with Juan & Pete Smith. Both main cave, and nearby entrance noted on earlier visit, were survey and two sites linked. Survey by JC revealed 305m of passage. Photos – JC & JS
JS visited site 4446 which is a twin depression, one which was choked with mud, and the other ponded, with an overflow sinking in mud. Photos - JS

Site 2538 revisited by PG & AL to continue work at end of Upper South passage. Previous snappering had done little damage, and more were used. Whilst no problems were encountered on getting to the end, water levels had risen significantly by the time of exiting. The short bottom pitch was very wet and needs repositioning, with the section immediately following ponded. The 'breakdown chamber' was wet, and the lower section of the bottom big pitch was covered in spray – rebelay needed to avoid this. (See separate hand written account of this trip.) *5 pages*

From: Juan Corrin <uzueka@aol.com>

Sent: 18 April 2016 21:57

To: direct.station.limited@hotmail.co.uk

Subject: Re: Easter Report.

Hi John

I'm just cataloging your sites and I'm 90% certain that your find of 7/4/2016 is site 542. The survey seems to fit topography and roads (give or take 40 years). What do you think?

Cheers

Juan



From: john southworth <direct.station.limited@hotmail.co.uk>

To: Juan Corrin <uzueka@aol.com>

Subject: Re: Easter Report .

Date: Tue, Apr 19, 2016 1:43 pm

Attachments: La Cavada caves.pub (4271K)

Hi Juan

Cave 542 is the cave I found next to the water treatment plant , I wonder where the draught comes from in the final choke if 549 is a complete sump ? , will check these earlier finds in future .

The attached map shows four caves we have found but not reported being out of area .

The northern most one is a hands and knees , stooping passage for about 30m ending in a sandy , boulder choke which might dig and found summer of 2014.

Next down is the roadside cave , shown to the Pistruellos group , which you might have seen the pics they sent , still waiting for some more info from them on this one .

Next is what looks like a walk in cave in the bank of the main river behind the bar opposite the supermarket .

Last is a resurgence cave below an old watermill , plenty of water coming out , looks low and wet .

Cheers

John

PS no GPS for any of these .



20th April 2016 After a phone call to Pete the night before about a goat stuck on a ledge in Codisera (0039), Pete and Juan met with the farmers, Ismael and Ciano at their cabaña just about the Jivero caves at 1120. Drove up the rough track to the field below Codisera and then had a gentle stroll up to the entrance.

The cave was cleared of excess goats leaving just one stuck on a tiny ledge about 7m above the traverse around the first 7m drop - a slip would have meant a fall to the bottom. In fact, another of their goats had already fallen down the p7.

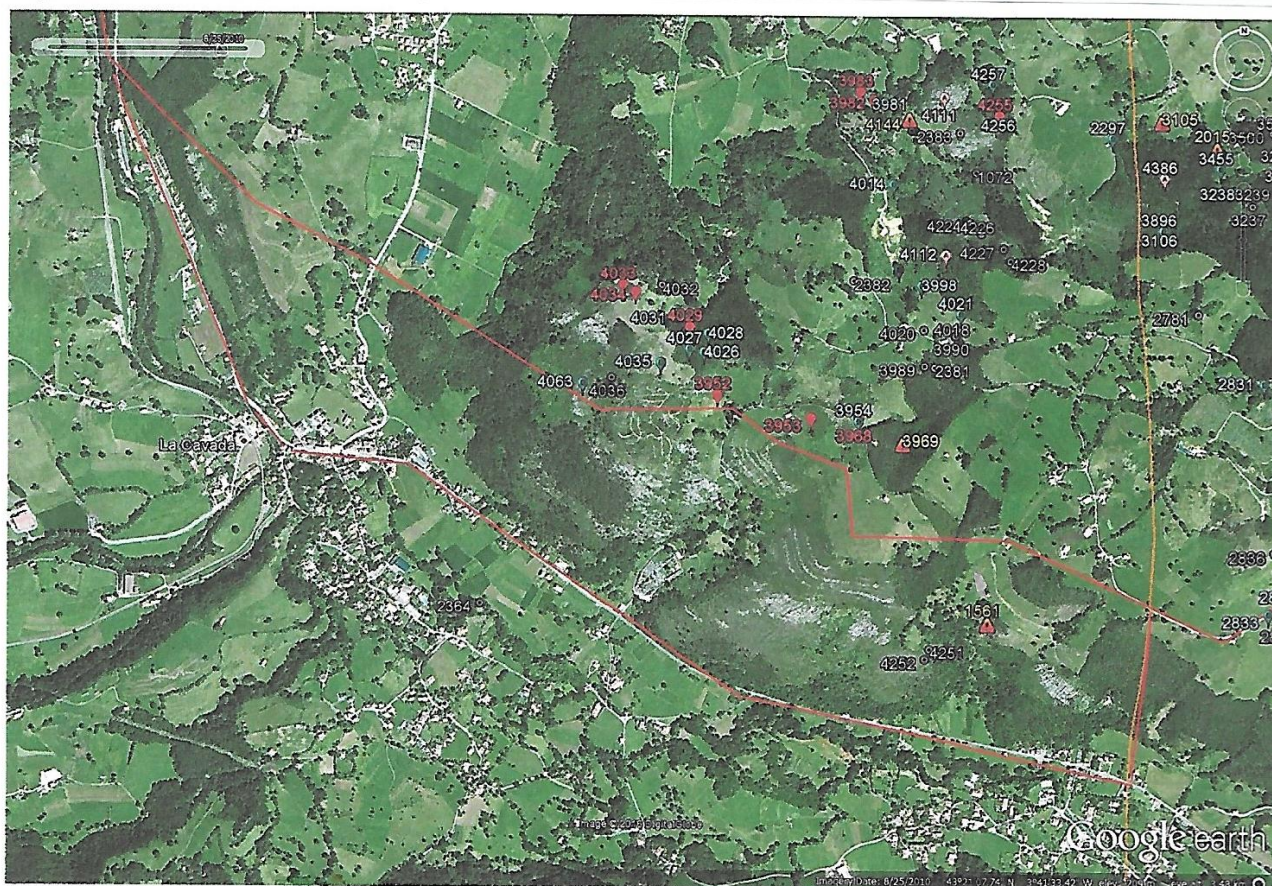
Ciano and Pete went further into the cave and came back up a route on the east wall, ending at roof level, just short of the stranded goat and about 4m above it. Pete put in a bolt then traversed along and down to reach the animal. Luckily it stayed calm while Pete tied a rope round its horns. It was then hauled up and escorted down off the wall and out of the cave - using a route on the west side of the p7. Quick exit and back home for lunch.

There's the promise of *un vino* next time Ismael and Ciano see us in Bar Germán.

From: john southworth <direct.station.limited@hotmail.co.uk>
To: juan corrin <juancorrin@matienzo.org.uk>; Phil Papard <papard@easynet.co.uk>
Subject: Easter 2016
Date: Fri, Apr 22, 2016 3:04 pm
Attachments: La Cavada-Barrio de Arriba.jpg (527K)

Hi Juan/Phil .

Attached photo shows the area inside the red line which Miguel from the Pistruellos group gave verbal permission for the Matienzo expedition to explore , he marked out for us on a map I had printed of some caves , shafts known to them and also an archaeological cave near the cemetery , unfortunately I lost this map . Chris and Phil Parker found a shaft , cave and a dig in area marked but not sure where but as far as Dave , Phil G and myself are concerned we have more or less finished work in this area , maybe one more trip down Mine 2 . The two new sites in the Bencarno valley (4428 / 4429) we would like to revisit and dig if we can get the go ahead from the Pistruellos group if that seems ok with the expedition thinking on this one . Concerning publication of out of area new sites Dave , Phil G and myself go along with the idea to just sit on the info at the moment .



From: Phil Goodwin <philcygoodwin@gmail.com>

To: Phil Papard <Papard@easynet.co.uk>; Juan Corrin <uzueka@aol.com>; Peter Smith <smith_peter2004@yahoo.es>; John Southworth <direct.station.limited@hotmail.co.uk>; DaveLMilner <DaveLMilner@aol.com>; Alfred Latham <chimpaa09@gmail.com>

Subject: Fwd: About "Very Good" mine

Date: Mon, May 2, 2016 1:51 pm

Hi All

Miguel sent me this E-mail a few weeks ago
Phil (G)

—— Forwarded message ——

From: Miguel Blanchard Rodríguez <miguel.blanchard@gmail.com>

Date: 18 April 2016 at 19:52

Subject: About "Very Good" mine

To: Phil Goodwin <philcygoodwin@gmail.com>, Peter Smith <smith_peter2004@yahoo.es>

Hello Phil and Peter,

A few days ago I've been in Torrelavega (Fondo Mina Reocín) investigating about "Very Good" mine in Riotuerto in order to find another entrance and new galleries.

My conclusion is that there are 2 mines: the "old" and the "new" one and they are not joined. The "old" is the one we know and the other was closed when they removed the derrick... unfortunately the pit was the only entrance. Regarding Apolonia, I think it is the name of the mining claim... but not a particular place.

In "Fondo Mina Reocín" you can find a huge amount of information about this and other mines: topographies, maps, historical data... very interesting.

Un saludo,

Miguel

From: Phil Goodwin <philcygoodwin@gmail.com>

To: Phil Papard <Papard@easynet.co.uk>; Juan Corrin <uzueka@aol.com>; John Southworth <direct.station.limited@hotmail.co.uk>; DaveLMilner <DaveLMilner@aol.com>; Peter Smith <smith_peter2004@yahoo.es>; Alfred Latham <chimpaa09@gmail.com>

Subject: Very Good Mine

Date: Wed, May 4, 2016 9:53 pm

Attachments: Elevation sketch Very Good Mine.pdf (127K)

Hi All,

Miguel has sent me some photos of plans from Torrelavega but has asked me not to forward them as he does not have the permission of the University to do so. Someone will have to go to Torrelavega if the plans are wanted for the Matienzo database. A visit might shed light on the mining on Vizmaya.

I have done an elevation sketch of the relationship of the old mine to the new.

The plans of the old mine are labelled "Cueva de la Mora S.A.". This is the name of a mining company but was it the original name of a pre-mining cave? Answer not known.

Best wishes

Phil (G)

From: Phil Goodwin <philcygoodwin@gmail.com>

To: Juan Corrin <uzueka@aol.com>

Subject: Re: Very Good Mine

Date: Fri, May 6, 2016 9:17 am

Attachments: Elevation sketch Very Good Mine.pdf (127K)

Hi Juan,

I asked Miguel about what was named what after I saw Cueva de la Mora on the old plans. I do not think he knows. I don't know where the name 'Favorita' came from. There is no mention of the name in any of the documents and the accepted Spanish name seems to be 'very good'. I suggest that until we know better we call it all 'Very Good'. It may be that different mining companies used different names. Site 1561 is definitely the old mine but at the time it was probably thought the two mines were linked. Yes, Ali's photos show the gear over the 'new mine'.

1561

The elevation drawing is simply a quick sketch to give an overall impression. The orange bit is a very rough sketch of where the old mine is. The fragment is meant to be an indication that there a small lower level. I did not notice that they did not quite join up. Amendment enclosed.

'Cave in a mine' does not seem to be connected with the complex in any way. On the old plans there is a natural hole marked at about where the open shaft is located but no mining is shown. However there is a map which has a mining symbol where 'Cave in a mine' is.

The photos of the plans are not good. Seeing the originals would help.

Cheers

Phil



MATIENZO CAVES PROJECT