

# LOGBOOK

Year: 2013

Season: Whit

Logbook pages scanned to jpg then combined into a pdf file using <http://smallpdf.com/>

*Juan Corrin, January 2015*

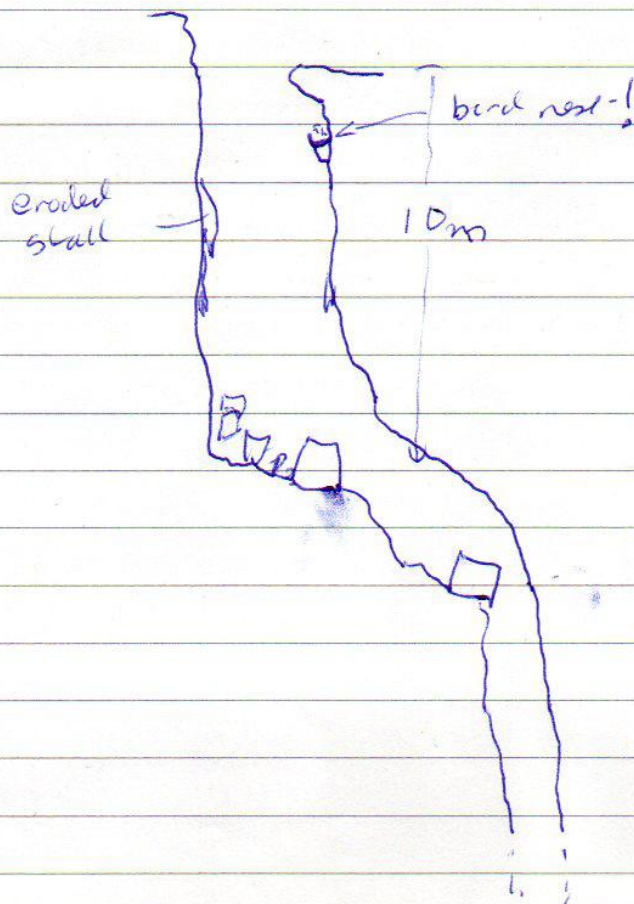
WHIT 2013

1 June 2013 Juan, Pedro & Phil P. S. Vega.

3887 "new hole" to north of 674. After removing the stone cap & bridge two large blocks ~~were~~ down shaft. Phil descended on rope & found one of the blocks now acting as a "dam" that will hold up any loose rock on a ledge some 10m down. A further drop of some 3m in a rift- 1m wide to the second block which needs to be ~~broken~~ removed to give easy access to a further drop in the rift of a guess of 20m (ish). As the rope would not reach the work was ~~for~~ left for another day.

In 674, the floor is covered in plants with one possible dig in East end, but very little prospect. This large collapse feature shows there must be development under this area. A possible cave on the North wall of 674 was examined by Phil & Pedro, but proved to be a choked series of rifts formed by slipped sheets of wall rock.

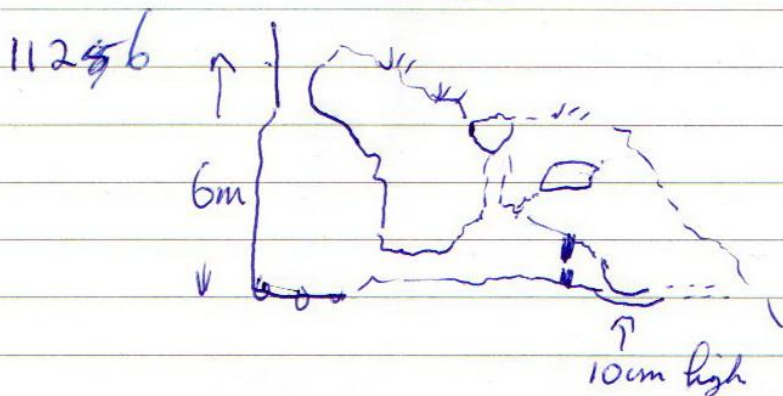
3887





①

Site 1126 was dropped by phil to the expected choke! No real prospect along dig. To the east was a short (5m) passage that connected to small holes in roof to surface, and a small continuation with some old ~~shaft~~ "stal". This looks like an old cave that has little <sup>or no</sup> prospect as it leads to the valley & will not extend <sup>for</sup> before reaching the surface!



**Saturday June 1<sup>st</sup>, 2013.** Phil, Pete and Juan walk up from Seldesuto to look at holes found / seen at Easter. Phil - the man with the 29m rope and caving gear. Weather was cold so good time made to the first target, just west of site 674. This was first seen by Pete as a covered shaft and is now

**Site 3887** 30T 449843 4793992 Altitude 582m. Shaft was uncapped by sending most of the cap down the hole. A 13m drop ends at the head of a blocked 20m pitch that needs work to enter.

A few metres to the east is the large open hole at **site 674**. Phil descended at the northeast corner. A GPS reading was taken on the northern lip, in line with the centre of the south-north rift 30T 449865 4793989 Altitude 583m. The site is 15m deep with a small dig in the base.

Then wandered down the valley to **site 1126** 30T 449868 4794043 Altitude 552m. Phil dropped the hole, 6m deep with a short length of decorated passage.

Down the hill was **site 1125** GPS'd at 30T 449850 4794067 Altitude 537m. (See Easter log). An alternative grid ref for **site 1124** is 30T449837 4794107. (See Easter log).

Then went to area of 4 holes which were difficult to find in the snow and hail at Easter. After some searching all four were found, photographed and GPS'd. There has been recent confusion over site 1178 and 1179. Site 1178 is close to the edge of the scar, in clints. Site 1179 is back from the edge in fewer clints. The old grid ref for 1178 is actually 1179 and old photos will need renaming.

**1178** @ 30T 449780 4794252 Altitude 503m

**1179** @ 30T 449784 4794237 Altitude 506m

**1180** @ 30T 449793 4794221 Altitude 512m

**1123** @ 30T 449803 4794248 Altitude 510m

Further to the northeast along the hillside came across what is probably the small site mentioned as one of two at 1122. This is in "lapiaz" but seems to be only a few metres deep and not 20m. The 20m deep shaft "20m away" could not be found.

**1122** @ 449839 4794280 (3m deep hole?)

There was also no sign of site 1121 at its position. This might have been 1120 before the fence disappeared?

Sites 1120 and 1177 can now be separated.

**1120** @ 449911 4794330 Altitude 517m

**1177** @ 449914 4794335 Altitude 517m

Carried on around the hillside to Spear Pot area and eventually found the entrance.

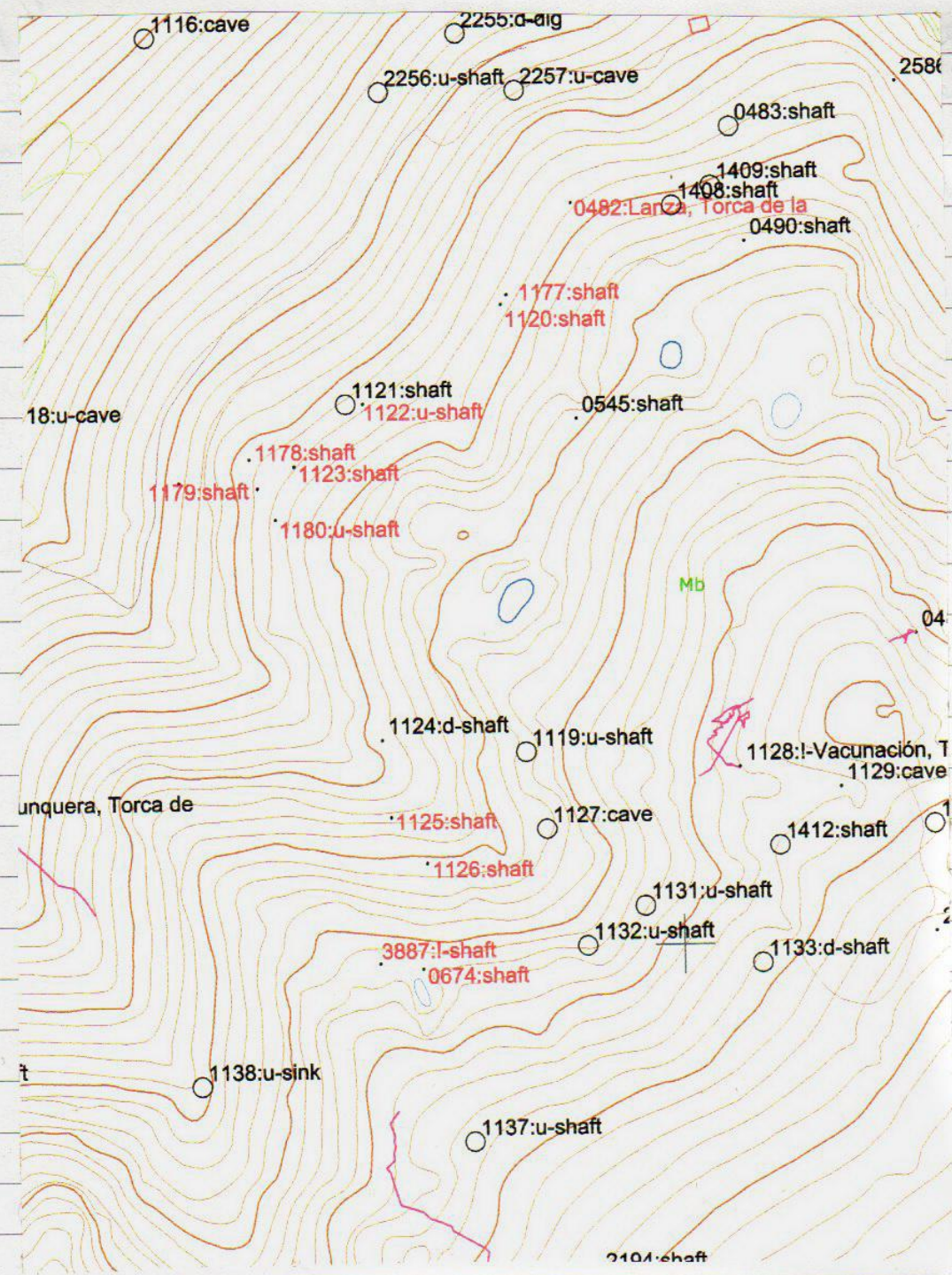
**0482** @ 449948 4794382 Altitude 519m

Sites **1408** and **1409** are more or less correctly positioned. Photos.





2



**24<sup>th</sup> May 2013 Pete and Juan into site 3884** with the intention of surveying the known upstream passage, pushing on at the end and dropping a ladder down to explore downstream.

Enough water was entering the entrance chamber for the route through to the top of the downstream pitch to be a bit drippy. Went to the upstream "end", surveying the higher level oxbow, *en route*. At the end, because he was at the front, Juan went through a small pool (a sideways crawl) that Pete stopped at when the cave was first explored at Easter. An enlargement was entered where the *station 8* marker was left off the floor in a joint. A left hand bend through another small section can be seen to meet a block and a possibly larger section. The floor seemed to be rising up reasonably quickly. Someone smaller and more supple required.

Surveyed back to the entrance, taking some video on the way. Didn't go down the pitch to the downstream continuation as it was getting close to call-out time.

The upstream end comes close to site 2449, a stream sink, the entrance of which is apparently 22m above. A total of 297m was surveyed over a 5 hour trip.



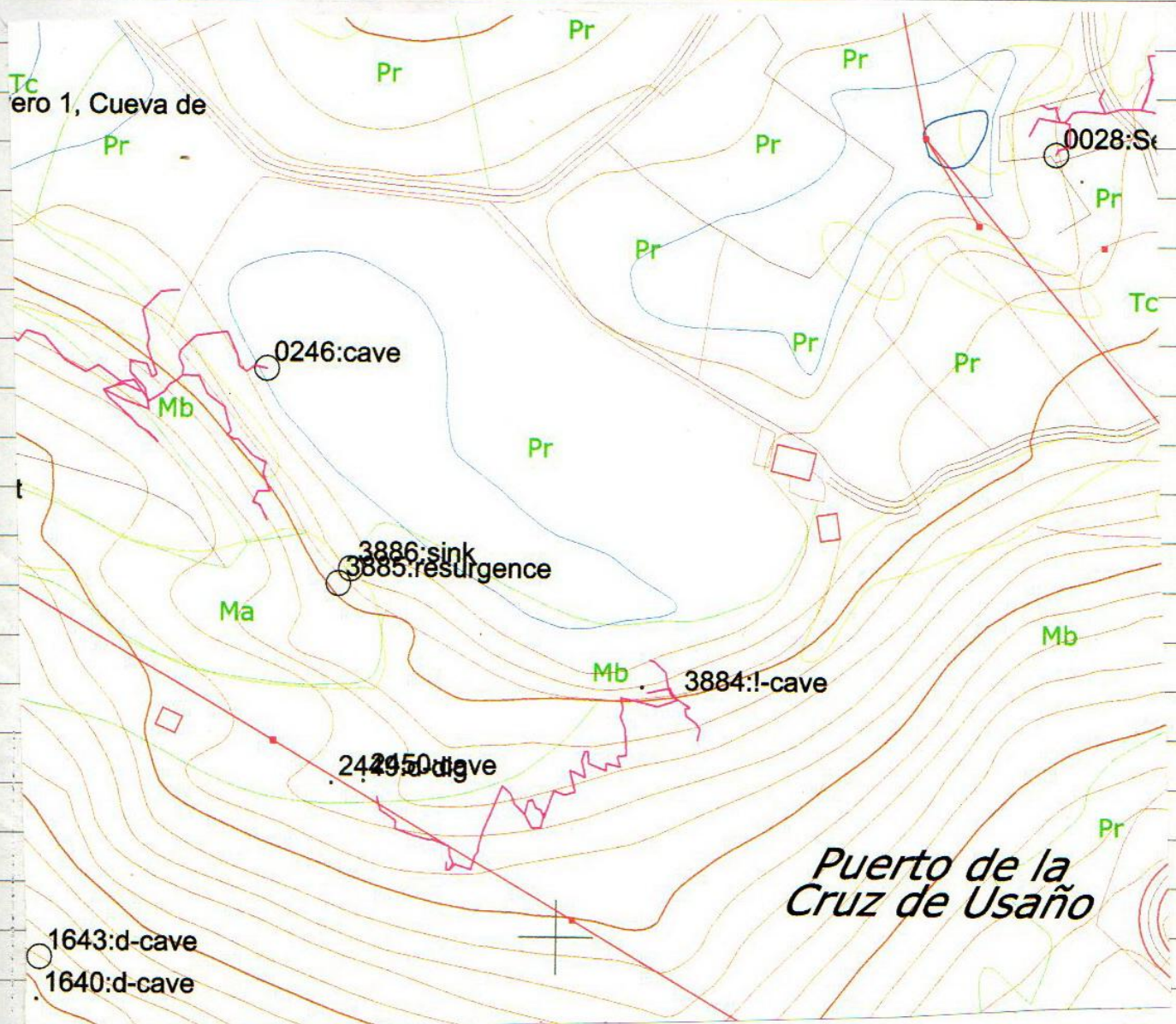
29<sup>th</sup> May 2013 Pete and Juan into site 3884

with the intention of pushing on down the second pitch. Approaching the entrance it was quite obvious it would be a wet trip as we could hear the water dropping away inside the entrance chamber. The amount of water was much greater and, instead of the first pitch being a drippy affair, it required a bit of dam building to divert the water so it didn't fall directly onto the ladder. We couldn't avoid the water at the base of the first drop so reached the top of the second pitch already soaked. A second ladder was added to the end of the first giving a 4.5m pitch.

At the bottom, a small chamber received the water from above and also another stream. We walked and shuffled downstream first until a bouldery run-in was seen on the right hand wall after 15m and a short crawl in the water led through to the rest of the choke. Pete, at the front, wasn't too impressed and couldn't see an easy way through. It really needs another look when conditions are drier.

We then turned our attention upstream. This had slightly deeper water and mixture of stooping and waddling led to a silty sump pool after about 30m. This water is probably that seen sinking much further into the cave to the southwest.

A couple of bits of video taken – at the base of each of the drops. Only underground for just over an hour, but that was enough for me.



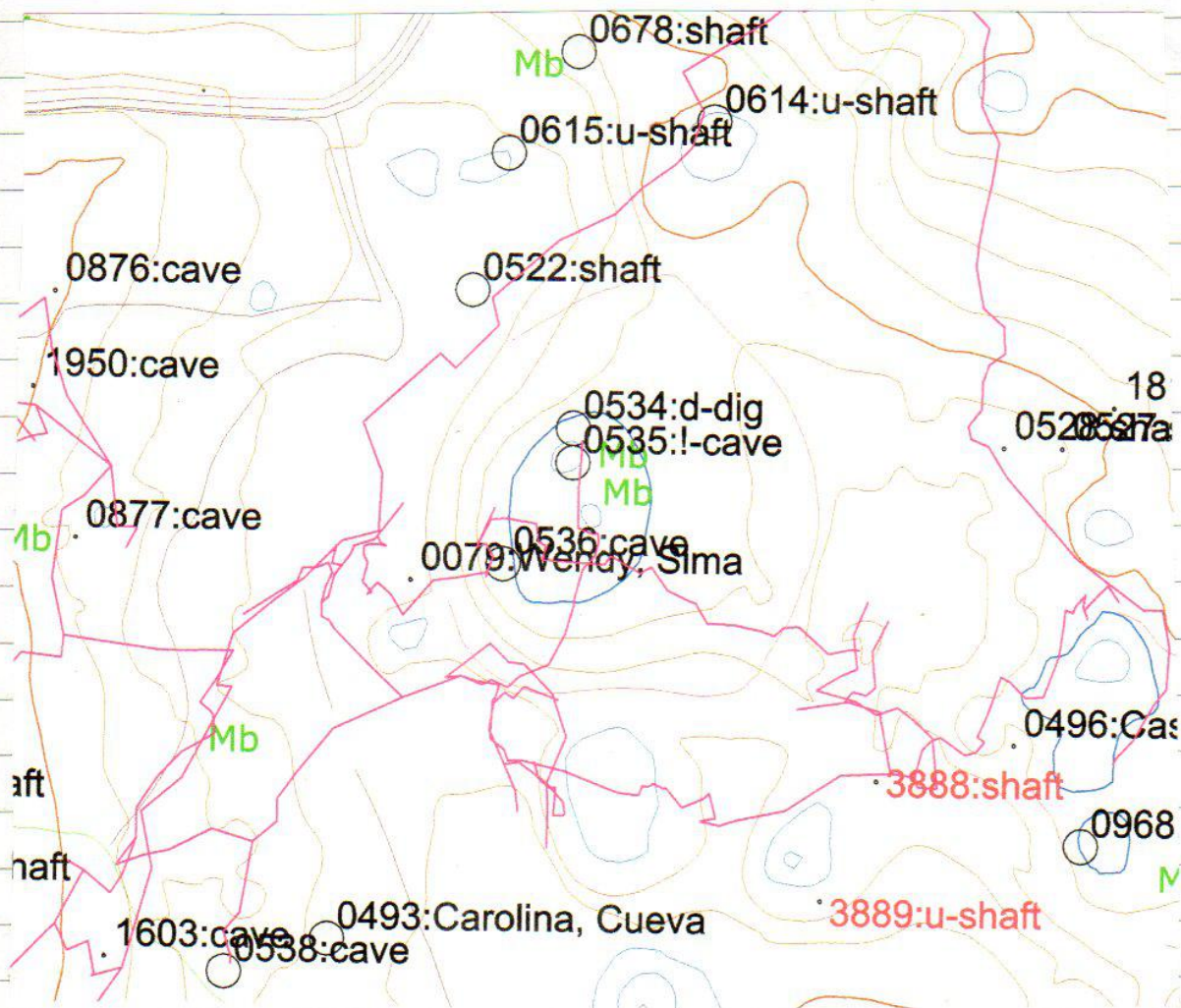


16  
Saturday, June 15<sup>th</sup> Juan and Penny – a quick walk out onto Enaso to investigate a black hole seen a few days before.

**Site 3888** (30T 0450940 4797158) is a 2m straight drop where a hand line is useful. If the hole is not covered with brambles an enticing black hole at the base is seen which leads straight under jammed blocks into a tiny chamber with no hope of extension.

A larger shakehole, a few metres to the north appears choked all the way round.

The larger depression to the southwest was investigated and three holes found up from the base along the southern side. **Site 3889** (30T 0450924 4797123) is a 5m deep, open, roomy shaft which appears choked and needs tackle to descend. Five metres to the northwest is a narrow choked hole and there is another choked opening a further 9m away.





## **MATIENZO CAVES PROJECT**