

# LOGBOOK

Year: 2012

Season: Easter

Logbook pages scanned to jpg then combined into a pdf file using <http://smallpdf.com/>

*Juan Corrin, January 2015*



11/1

Hi Juan.

Seems we got the grid reference wrong, it is where the small triangle is on attached map file just east of 3006. Nearest reference on SIGPAC is 446846 4801590.

446743 4801590 SE.  
39 388

Took your advice about Google Earth & the thing working ok, thanks.

Cheers John.

6279 446841 4801597

To: [direct.station.limited@hotmail.co.uk](mailto:direct.station.limited@hotmail.co.uk)

Subject: Matienzo site 3605

From: [uzueka@aol.com](mailto:uzueka@aol.com)

Date: Tue, 6 Mar 2012 07:30:11 -0500

Hi John

The pdf map 27/1/2012 has site 3605 on it, but it may not be in the correct place - is the grid reference correct?

Screen shot of the position is attached, more or less in the middle.

Cheers

Juan

### 28<sup>th</sup> March 2012

Juan and Penny out along the track on the east side of Muela / Mullir. A 7 mile hike with not a lot of cave to show for it.

**Site 3504**, marked AA76. Entrance had a good cold draught out on a hot day but draught was lost inside the cave. Crawled in to a stand up area with stal slope up and down. On the right of the down-slope is a hole that has obviously been capped. A small person might fit down and the hole opens up into a chamber below. The site may still be worked by the Colindres Ademco group. 15m long. Photos taken.

**Site 3143** Photo of entrance.

**Site 3618** From highest point on the track, a long walk downhill took us past Red Stripe Hole, site 3618: a small, 2m long shelter with stal at the entrance stained red. Photo.

**Site 2465** Eventually reached this hole which is now obscured by a small, fallen tree. However, the GPS position taken 6 years ago was spot on. A flat-out crawl enters a small chamber with stal to the right and a trench to the left which is immediately blocked by a large rock. Photos taken.

On the way back, took photo of the entrance to **site 3392**.

site AA 76  
flat out ent. good out draught 10m  
stal hole down

2465  
trench collapse 10m  
flat out entrance V

3618 GPS 30T 0456446  
4795544



## Seldesuto March 2012

SITE 3619 M1 449595 4793932

20m? Roomy shaft.

SITE 3620 M2 449457 4793758

In a depression in the valley. 15m scramble down to a choke.

SITE 3621 M3 449411 4793718

10m? shaft next to holm oak.

SITE 571 M4 449322 4793775

20m? shaft in high rift.

SITE 572 M5 449334 4793773

Small shaft, 7m? possibly on to boulder slope.

SITE 570 M6 449352 4793778

25m? pitch on side of gully, second entrance in the gully.

SITE 3625 M7 449388 4793721

15m? Small shaft.

SITE 3626 M8 449401 4793875

10m? Narrow shaft

SITE 3627 M9 449474 4793722

Short scramble to sharp corner and narrow 5m pitch. Takes a draught.

SITE ~~3627~~ <sup>659</sup> M10 449357 4793877

Roomy 20m? shaft.

Peter Smith

Saturday

Sunday 31st March

Pete Smith, Steve Martin + Juan ~~ist~~ to site 3622, a dig which Pete has been working at.

Spent a few hours capping + digging until IT WENT.

3m climb down at entrance past a loose wall of blocks ends at a dug under to a descending narrow passage which lowers to a flat out rock-floored, occasional streamway. This quickly drops into a chamber.

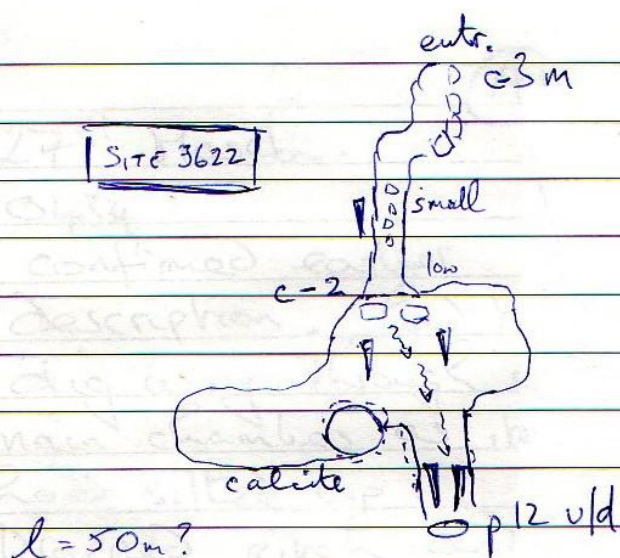
To the right a steep leads to a caliche area which chokes off. Straight ahead, a low passage slopes steeply down over rocks to the head of a pit which is undescended.

Not very much draught, but it wasn't raining hot outside

Entrance is at edge of woods at a low point of the field

GPS 30T 0449859 4796287 Alt. 268





Just above  
and to the NW is a  
narrow 3m deep pit (SITE 3623)  
This goes deep at one side  
but the shaft might just be  
a slip feature.

SPS. 0449840 4796295 ↑

The site lies just at the  
top edge of the trees.

In the NW corner of the field, up in the trees is a depression with  
a red plastic bag and a couple of possible digging sites at the  
Site 3624. base of a 4m high scar.

Sunday 1st April. Juan + Penny walking along track from Juan's house  
then above Caracaseso. Naras hole noticed about 15m S of  
building at Fuente Lameza (2800).

Just before (70m) entering the Mulhron Field at the carbaña, there  
is a hole on the right of the track. This slopes down and  
needs a look at with a light. (Site 3628 @ 307 0452913 4798004  
↑165)



# Barry + Dave G.

NATIENZO  
LOG

26<sup>th</sup> March 2012

Dave Gledhill  
Barry.

2538 El Cubillón

Visit to sort out  
Survey plan.

Warm sunny morning  
drinking out  
moderately.

①  
re explored area  
first visited with  
Phil Goodwin 2011  
franklin chambers  
previously reached  
but not ~~exp~~ surveyed  
2 leads apparent

②  
To the left a 1.5m  
climb leads to a  
rising series of passages  
with numerous ways  
on, some up, some  
down. Rope required  
to continue exploration

safely.

③ Straight on a  
slope down leads  
into larger passage  
Savacat, inlets need  
to be climbed.

②  
Large passage off to  
the right first entered  
by Brian single  
leads to a bifurcation  
right swiftly reveals  
two muddy tubes  
both of which climb

rapidly with mud.

Left, an area first  
entered with Pete  
in December climb  
a fairly steep muddy  
slope which soon  
becomes right, a  
crawl under a  
chokestone reaches  
a creek. An  
awkward step down  
arrives at a T  
junction in large  
passage. Left  
first looked at by

Pete Smith continue  
some distance through  
large galleries with  
fine formations.

Right looked at by  
Barry in December.  
wanders through  
some boulders to  
enter various tubes  
one of which  
continues as a  
sizeable climbing  
passage, rope required  
to make progress  
safe.

various other leads  
were asked to be  
pursued during  
survey takes in  
week 5 (looking for stuff on @ +  
descending off on @ - left road up).

③ looks like  
Tilbesthwaite  
went rough duck  
head out of water  
to a point just beyond  
what can be seen from  
beach. Samp  
N= Vis.

④ looked at the end of 1<sup>st</sup> section  
of streamway - low hands + knees crawl  
for short distance - closes to a gap of a few inches  
- no way possible. Half way along - tube / passage seen  
crossing over passage some 10 ft up. Barry climbed  
up with confidence - needs rope + more time to explore.



27<sup>TH</sup> March.

(A)

0434

confirmed earlier description. Had to dig way through into main chamber as it had silted up.

Dropped pitch and went beyond dog leg constriction to a point it closed in 2-3 snappers perhaps beyond looks larger.

Quite reasonable cool draught out at point where snappers needed - warm day.

27/3/12 cont.

Fridge. 2751.

(C)

Quick look at end of hot day - just cooling off. Reasonable, outward cool draught - felt standing outside entrance. Removed some of rocks at back wall. Mainly jungle of fallen branches + dirt infill far above. Enlarged to look up and to right - possible passage - no draught + full of debris. Further dig forward revealed hole in floor - even stronger draught out now. Need numerous 'breeze block size' rocks pulling out to see if program possible. Still looks worthwhile.

(5) (B)

Dig - warm day  
cold draught out

Between 2661 and (8) barbed wire fence in direction of 0434. Partially dug into top of silted chamber. Really need whole mud bench digging away.

30 T 0449616

479 6510

(3632)

~~~~~

2661 - entered but pretty forlorn possible dig but not very inviting no draught.

28<sup>TH</sup> March

(D)

Survey in 2538

From Station 1.44  
to 4.41

Area from 1.36 needs to be surveyed.

Warm day, draught definitely switched from out to in at the bottom of big entrance pitch, noted around 15h.



28/3/12 cont.

(A)

Description of 1.44 to 4.41, starting climb up:

4m climb up @ wall - slippery - handline now in place.

Pump can fix: (1) pump demands carry over pump below (core-slipping) ends in dead end. Possible way on climb up to (2) - tight squeeze down - not attempted.

(2) pump is series of narrow pumps - some crawling over cables. Drifting out. After about 130m, pump ends in con pump with one side (L) ends in very high over - slippery water. (3) ends in large choke - not planned. When pumps initially for today up can be seen higher pump - top - heady of at 4-10m height. Would need aid to climb.

29/3/12 2 of (4) (C)

(C)

→ (from prev) we now know to be the site of Maze cave (habirinko) which we re-found. Numerous holes found, most of which already known. The largest shakshole had 2 small holes - dripping out cold on hot afternoon. Not overly impressive, but we sold team to John Southworth the next day. Ask him for more detailed description.

(5) Hill above Colson. Tried out Barry's phone with cave/GPS data. Nothing shown in area, so we went and found numerous holes - including small cave & fragments in limestone escarpment half way up the hill. Barry may or may not have this info. (3) re location. Beware - underfoot is tricky and can lead to falls from gorge.

Home

(B)

page 1 of (4) (4)

29/3/12

(1) Drive/explore - (2) Fridge 2751 - Boulder above cave? which

(3) Propelling in ex-forest, Hill above Colson? (TBC)

(1) Propelling - no idea where - but found north. Went in over just before site 2751, turn (2) and head down for southwards.

(2) Fridge 2751. - Picked out the black covering what seemed to be way on. Slight in flow down - approx 30cm wide but with pinch in below. Drifted not as strong as previous day but not quite as warm. Would need much work (screws) to gain person any further.

(3) Site ( ), looked at boulder (1) black polished tube down in side of shakshole. Too big for long hammer. Will need either long or been out with appropriate hammer. Still with white. Still no daylight - few not.

(4) hatched in recently felled wooded area which → cont

29/3/12 (3) of (4) (D)

See later map for positions

(D)

Colson staff.

3633

Curry

\* Cave - Co-ords 30T 452034 479 9070 (WGS 84)

Crawl in entrance is easy. Small chamber (3m x 2m) turn

(L) into larger chamber 6-8m x 3m. Low (50cm). 2 small inlets. Old calcareous. Choked bedding leading off into hill. No daylight.

3634

Shall - (1) 30T 451986 479 9149 - A, half. no daylight. 8m +/-

Shall 30T 452068 479 9162

3635

No comment required.



\* sketch passing on separate sheet.



30/3/12. (A) 2538 surveying - sump + new stuff

Davey - Dave G - Dave Nihar - Phil Goodwin.

Warm morning, but not as warm as previous days. →

Note that our flow has changed and is now flowing in slightly! Much less draught in previously strong draught area of cave - repetition of direction.

Survey section = Down to main sump + Up from 1.93.

Large passage - very large still predominantly mud covered with few pebbles spoiling the rock.

Also surveyed to main sump - previously only sheld in left of new stuff to go out - refer to survey for this date. Looks as though passage has now gone past 1 even up big sump.

31/3/12.

El Cubillon. 2538.

Dave + Barry - Trip to remove sump rope.

Also photos from last pitch to sump.

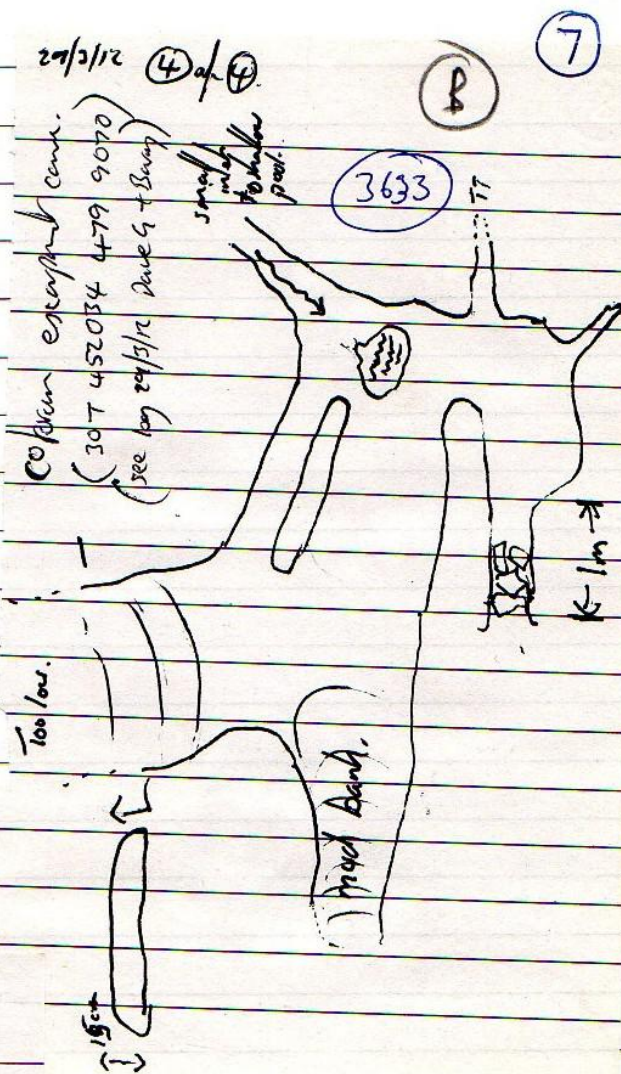
Briefly took up boulder filled rift on (R) right just before top of last pitch. Now continuing for fewer boulders. Caution - very unstable - not recommended.

Approx 30m before big sump, where passage drops down 1m, cascade + turns 90° (R) right - a window was opened directly ahead. Aftward climb up 2m.

Slipping mud. Up mud bank 3m then 90° right.

Continues up 45° mud slope in rift. After 5m hole in floor reveals chamber below - Needs rope for return as floor looks very slippery. Unable to assess full size of chamber.

Note - no draught on way in. Slight outward draught in tightest section on exit. Day not as warm as previous.





30.3.12

J. SOUTHWORTH

THREE DIGS FOUND IN CLEARED FOREST AREA AROUND  
MAZE CAVE, SAN ANTONIO

0446042 4801495 GLV 114 3629

DIG AT BASE OF SMALL SCAR, REQUIRES BOULDER  
REMOVING, SMALL PASSAGE SEEN, NO DRAUGHT

0446085 4801478 GLV 96M 3630

TWO DRAUGHTING DIGS IN BOTTOM OF LARGE DEPRESSION NEAR  
TO MAZE CAVE, BOTH HAVE GOOD DRAUGHTS

0446198 4798595 GLV 95M CAMPOSDELANTE 3631

SMALL CHOKED TUBE AT BASE OF LOW CLIFF, 15M NEARBY  
IS A STREAM SINK

31.3.12

3215

JOHN SOUTHWORTH, ALF LATHAM, PHIL GOODWIN & JANE MILNER

FURTHER DIGGING IN CRAWL & ENLARGED AT CHRISTMAS. APPROX 1m PROGRESS  
GAINED, AFTER LARGE BOULDER REMOVED. REQUIRES MORE DIGGING.

El Cubillon, 2538?

Friday 30<sup>th</sup> March, Dave Milner, Martin Barnicott, Dave Gledhill, Phil Goodwin.

Survey to end of stream passage to sump pitch (including ping down pitch).

Back to major inlet on left (going out). Survey up steep mud slopes taking left

branch, then left again at major junction through large caverns connected by up and  
down mud slopes. There are several places where ~~the~~ beautiful but delicate  
mud formations need to be avoided.

At another junction, the left turn under a false floor leads to two large chambers.  
In the second a narrow upward crawl leads to a climb which needs a short rope  
and a couple of bolts (or lasso a stall). A passage can be seen at the top.

To the right the large chamber soon ends in a very high aven and possible  
horizontal leads.

Throughout this section there are high avenus above almost every chamber.

Preliminary survey results show this section turns left over the sump pitch  
and then runs south parallel to the left branch found last November.

Martin will provide survey.



2/4/12 Espada - P. Eger, D. Bell, A. Well.

9

Tried to find 3222 entrance not located so far.

Water in upstream series runs to "pool", we muddied this but could not locate it anywhere downstream in main cave. In wet weather this apparently overflows towards Top River Entrance.

Looked at series on left (up ch) near Top River Entrance. One passage about 7m to end, other way up 3m then closes down.

Then went to "roof passages" over ~100m downstream <sup>from inlet</sup> in main cave. Climb up over blocks leads to small passage with a climb up ~10m to small dried rift. This passage has a noticeable downward draught, further on a corner over the stream with a possible way or beyond, rope needed.

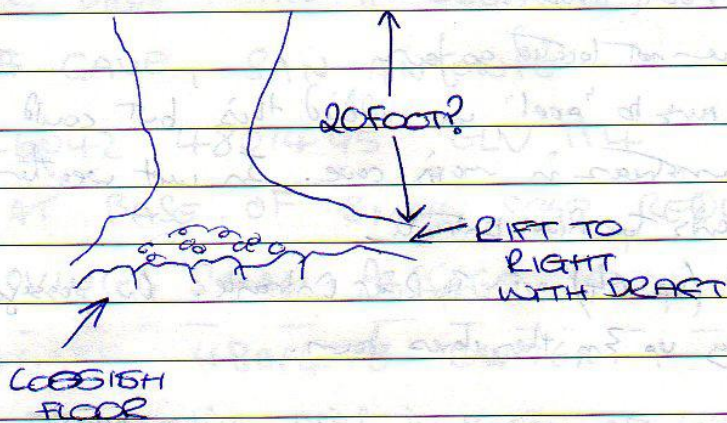
2/4/12 Phil P, Jon + James to Honeyman <sup>3594</sup> Pt to continue clearing the collapse. After a couple of hours Si, Di + Neil arrived (off the boat) and the route down to base re-opened. Roof seems very unstable in lower reaches.

3<sup>rd</sup> April 2012 - Tom Howard & Tony Bottrell Bank  
Site 1220

ENTRANCE WAS AS DESCRIBED; LOOSE & COVERED WITH LOGS. WE DESCENDED THE 20FT OR SO SHAFT TO A FAIRLY SOLID FLOOR. HEADING LEFT A TIGHT CHOICEY HOLE BUT NO DRAFT. STRAIGHT AHEAD WAS THE SAME BUT WITH SLIGHT DRAFT. TO THE RIGHT (THE MOST INTERESTING) HAD A GOOD STRONG COLD DRAFT. A ROCK SOUNDED TO DESCEND A GOOD WAY ALTHOUGH ITS A TIGHT RIFT THAT SEEMED TO OPEN UP BEYOND (2 METRES BELOW). SEE DIAGRAM ON NEXT PAGE...

Paul + Bank started pulling boulders out of 3223. Poor day for

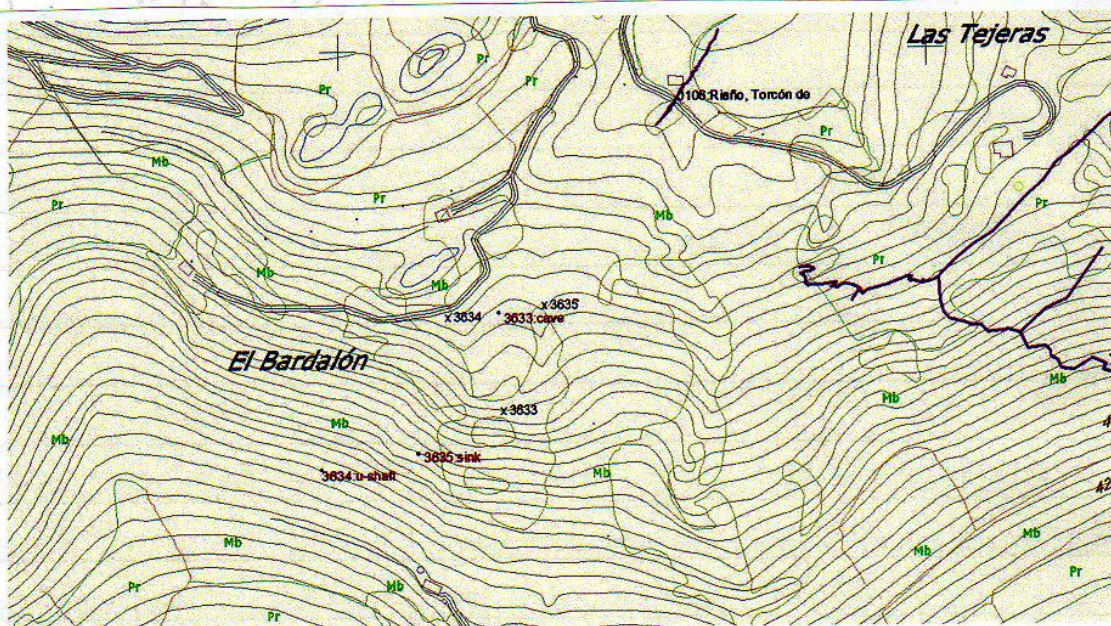




3rd April 2012 - Tuesday

(above Riano Resurgente)

Paul + Luke started pulling boulders out of 3223 dig. Now 1m deeper. No obvious draft but a very poor day for such things.



X = altered positions for sites 3633, 3634 + 3635 (from Barry)

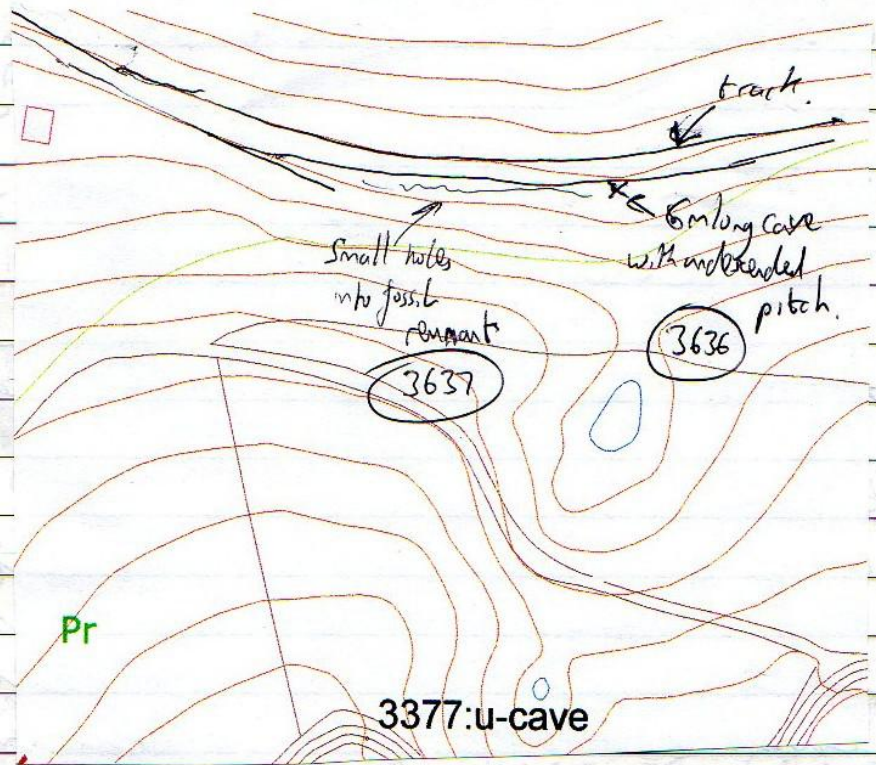
At the end of the dig, a small lead to a hole which leads to a chamber. In the chamber, there is a very high area and possible. Through the chamber, there are some small holes. Preliminary survey results show this section turns left over the area and then goes south. The survey is still in progress.



3/4/12 Carl, Tony, James

Went for a scamper above Rano in the Eucalyptus wood on the road over to Cobadad (ii)

Two large depressions in the wood yielded nothing of interest, but below the wood was an open area with a new track running horizontally across the hill. (3637) In the side of the track were several small entrances, the biggest being about stepping size for six metres to a choke. (3636) At the start of this cave there is an underscended pit on the left (about 4-5m deep). There may be a way on at the bottom but needs a ladder.





# DINGLE DISCOBOBULATION SUMMER TOUR 2012

1. ARRIVE FOUR MONTHS EARLY
2. INSULT SOMEONE, APOLOGISE  
(BOTTLEBANK, AGAIN)
3. INSULT SOMEONE ELSE, APOLOGISE  
(STENIX STARLIFT TESTER?)

DAY ONE.

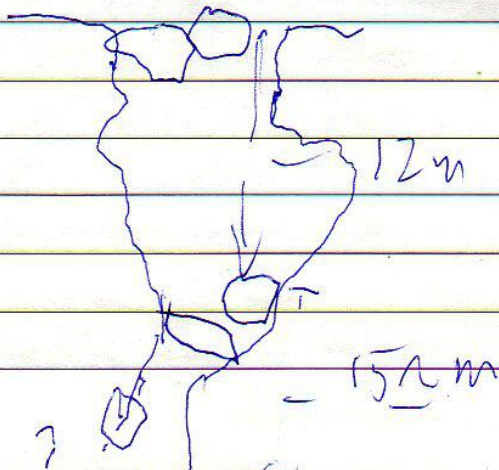
BLOW UP AIRBED USING TENTPOLES.

RETURN STOLEN PROPERTY.

TO BE CONTINUED.

~~Honeymoon Pat 3594~~ Juan, Phil, Jones,  
1340 - Phil P, Tom & Tony B, Ed. 3/4/12

Drove from Arridondo, not on easy track for last  
300-400m due to rain on mud. But - easy  
walk to 1340. Opened up shaft with caps, to  
make easy entrance. Cave is a rift - some 2-3  
m wide, chise at ends. 12m of Eade's pitch  
to next drop of some 15m to flat floor  
with possible passage to East. But - done on  
SRT next time





4th April 2012.

Paul + Luke went in search of the elusive 1063 dig below the 'white house' (now yellowish) farm. Not previously GPS'ed and we were unable to locate it. Found one hole (dig) in the gorse alonghating in slightly - no: - 3639. GPS'ed La Cuvia 0086 and found a shaft back up the house track and along the pylon track No 3640 - about 8m deep - ~~needs~~ undescended.

3639 - 0453116

0086 - 0453245

3640 - 0453506

- 4798071

- 4798014

- 4798299.

### BIL STEVE'S BLIND HOLE

4/4/12

NEIL 'SUM' McALLUM  
SIMON CORNALL  
DI ARTHURS

3622

BIL STEVE AND PETE SMITH ENTERED A DESCENDING PASSAGE WHICH LED TO A CHAMBER AND ON TO SEVERAL PITCH'S A FEW DAYS EARLIER, USING LADDERS THEY RAN OUT OF TACKLE AT A PITCH HEAD.

NEIL ASSISTED BY SIMON STARTED RIGGING FOR SRT, WHICH DI CONTINUED THE SURVEY FROM WHERE STEVE & PETE LEFT IT AT TOP OF 1ST PITCH.

\*THE TOP OF THE 1ST PITCH IS QUITE LOOSE & CARE \* MUST BE TAKEN ON ALL PITCH'S.

THE NEW PITCH WAS 7m A LANDED IN A 10-12m DIAMETER CHAMBER. A COUPLE OF BLIND HOLES UNDER BOULDERS WERE EXPLORED BEFORE CONTINUING DOWN A STEEP, SCALLOPED, CLEAN WALKED RIFT TO ANOTHER PITCH HEAD.

THIS IS A SMALL CIRCULAR SHAFT OF 6m TO AN ELONGATED CHAMBER.

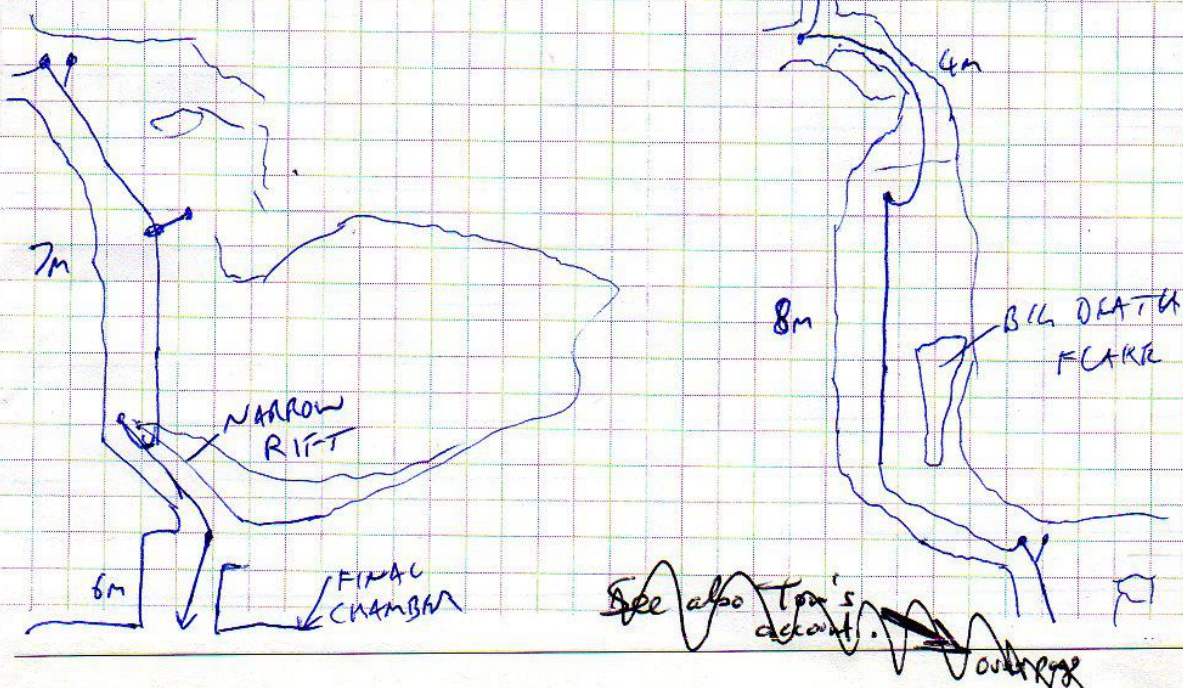
THE MAIN WAY OUT WAS A TIGHT RIFT, QUICKLY OPENING TO A FOSSIL STREAMWAY FOR ABOUT 12m TO A MUD SINK & NO POSSIBLE WAY ON.

THE OPPOSITE WAY ON OTHER SIDE OF CHAMBER WAS IN NARROW RIFT & GOT TOO TIGHT AFTER 6 OR 7m & DID NOT LOOK PROMISING.





TACKLE REQ. 60m ROPE  
10 HANKERS  
3 SLINGS



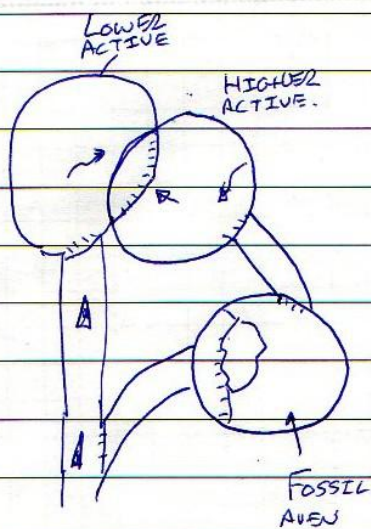
3/4/12 0258 'TOAD' MADPHIL, TOM CLAYTON, DAVE SMITH  
HEADED TO TO TOAD TO RIG. DIDNT PRODUCE RIGGING TOPO LAST  
TIME WHICH WOULD HAVE BEEN USEFUL. LUCKILY REMEMBERED MOST THINGS  
5 LADDERS + TWO BITS OF TAT. RIGGED TO BACK END + WENT TO  
LOOK @ AVEN IN 'GIRLZ DAY OUT' FOUND LAST TIME. STILL LOOKED  
PROMISING, HEADED OUT. NICE TRIP (7 1/2 HOURS)

4/4/12. 0258 'TOAD' MADPHIL, TOM CLAYTON, DAVE SMITH.  
HEADED INTO TOAD WITH CLIMBING GEAR TO CLIMB AVEN TO 'GIRLZ  
DAY OUT'. CLIMBED FOSSIL AVEN WITH DAVE, WHILE TOM, REDDARED  
ACTIVE AVEN TO FLOOR FOR ADDITIONAL LOOK AS MUCH DROPPED THAN  
2008. CLIMBED FOSSIL AVEN TO FOSSIL WINDOW / RIFT TO ACTIVE  
AVEN. LOOK OUT TO FLOOR OF ACTIVE AVEN, BUT HIGHER SECTION  
(SEE DIA). AVEN CONTINUES 30m+ UP ACTON, BUT DIFFICULT TO SEE. CLIMB  
UP FOSSIL MEANDER TO HOPE TO GAIN FOSSIL PASSAGE + FIND STREAM  
WAY. CLIMBED UP + OUT OVER FOSSIL AVEN, BUT ~~ROOF~~ MEANDER ROOF SEEN  
WITH NO APPARENT WAY ON. SUGGESTED ROUTE IS TO CONTINUE UP



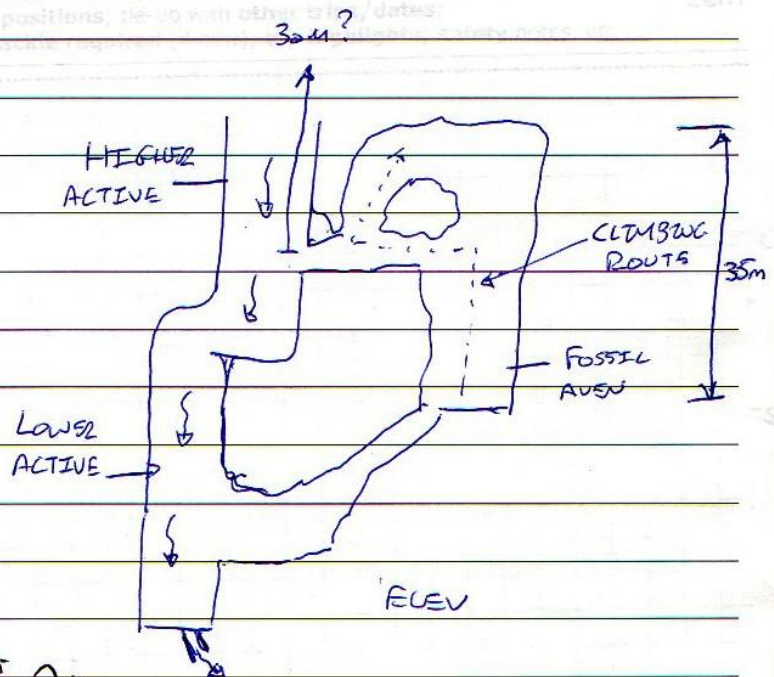
## ACTIVE AVENUE.

Please include at least date of trip, people involved and appropriate scale. If you have a GPS, include GPS entrance positions, tie up with other dates, entrance position or passage sketches, etc. Use the following:



Pun

Tom a/c over page



4/12 Peter E, Ali, Dave, Phil - Pico

Visit to Pico to drop pitches in Mega Bat series.

The way on passable by midget was very small but with Row Snapper it is now a lot wider. Another six snappers may get to a flake and give a better idea of its potential.

On the way out we checked out a few potential areas for pushing. A window from the main passage looks down into the lower slope down passed on the way in. This needs more attention.

Note

The entrance can be done on SRT as a rebelay is part way down where the mud ends.



4/4/12

Toed.

The streamway at the bottom of the active oven was checked out. At stream level, the passage was tight and immature and nos followed round a few benches to where the water flowed down an impenetrable crack. The rift was also followable several meters higher, which was a few muddy cracks lead off to dead ends and a drop in the floor could connect back to the lower level beyond the crack.

The labyrinth before the ovens was also searched for missed leads but everything seem to connect back into it. The labyrinth to be surveyed properly next trip.

Tom Clayton.

5-4-12. Thursday.

Pete Egan, Ali, Phil Pappard, Dave Bell, Paul Gelling & Lark.

Area over the end of Cow Pot. 'Alto de Pontillon'

1st Shaft - 5m choked - 0447647 - 4799894 Needs numbering

2nd Shaft - 6m pitch to mud/dead cow floor - rift off one side

very steep slope - Traverse over into sandy alcove with 12m

drop at far side - lands at base of the rift. Flat bottomed

landing - choked in all directions, & Slight inward

draft at the top - Site 3589 0447478 - 4799843.

35



3<sup>rd</sup> April

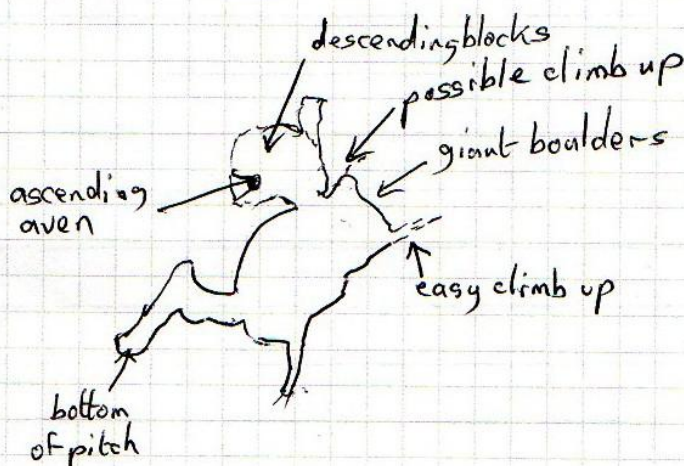
2538 El Cubillon. Gordon Baxter, John Southworth, Dave Milner,  
Phil Goodwin

Breakdown chamber

Hole in floor turned out to be a jumble of climbable block. Various holes were explored which lead to a narrow leading rift which becomes too tight. The rift seems to follow the same line as the west roof/wall of the chamber.

The top of the chamber is not as loose as first thought. At the top of the NE running slope the roof/wall is blocked by giant boulders which must have left a space behind them somewhere.

There are possible climbs at either side. The right hand one has been climbed to where it narrows. It appears to descend beyond.



02/04 H. LONG St. Antonio area

3661

1 metre drop into 2 metre long choked passage just up from river edge by road bridge. GPS 0447917.4801946

(There is a 2 m long x 1 m diameter phreatic tube 4 metres and up to the left of the above).

Just Upstream from this is a narrow rift at water level that close 3m in

05/04 H. LONG Riano area.

3662

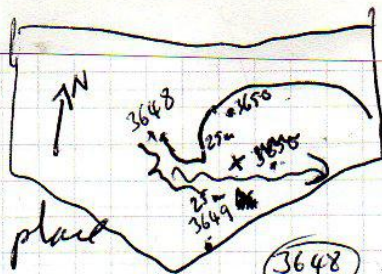
At very edge of jungle area is small opening in low scar to a 1.5 metre drop and choke.



3rd April Wed- 2012.

Alf Latham and Harry Long

Moncobe area (3-4 farms back from <sup>usual</sup> / pkg place)



- (A) Gully walk on R below Farm. Deep gully - track into gully about 50-75 m down. Left on L bank wall. Stones rattle down 3m. Slight out draft, ~~tree~~ fallen tree across hole. No GPS.

- (B) Right bank further down in limestone wall near beginning of amphitheatre. Easy 3 m in to 3 m overhanging draft to a 10 m long chamber, 3-4 m high, 2 m wide. Fall at far end. Crawl under wide bedding leads to 5 m crawl to fill with two small drafting holes. Cane drafted strongly out.

GPS nearby in Amphitheatre 0446343 • 4797200

- (C) Amphitheatre is 30-40 m wide + 30 m ~~the~~ back wall with small holes around edge + one small cane, crawl to small chamber.

- (D) Below amphitheatre is old ice house on R and on track. Below cliffs to bank is hole at edge of track, depth 4 m, slight out-draft. Can be descended with ladders.

GPS 0446382 • 4797207.

#### 4th April Harry Long Moncobe Area

- a). 3 m steep slope to undercut beneath rock face to possible further small drop. No draught.

GPS 0446256 • 4797376

(3652)

- b). In rock face, just above wire mesh fence. Is a low entrance that needs a short dig to gain access to a slope down into a crawl. No draught.

GPS 0446374 • 4797346

(3653)



4th APRIL 2012.

JOHN SOUTHWORTH, PAUL GOODWIN, DAVE MILNER, GORDON PROCTOR, ALF LATHAM.

- ① 0446379 4796519 - MONWBE  
NARROW SHAFT, ENTRANCE CURRENTLY BLOCKED BY ROCKS. DEPTH APPROX 20', UNDESCENDED - SLIGHT OUTWARD DRAUGHT. (3654)
- ② 0446352 4796452 - MONWBE  
TWO SITES. (3655)  
A - RIFT AT BASE OF CLIFF, 8' DROP ONTO SOIL FLOOR. SMALL WINDOW INTO FURTHER SPACE - NEEDS WORK ON WINDOW TO GAIN ENTRY.  
B - SMALL SHAFT IN HILLSIDE WITH GOOD DRAUGHT. 10' DROP ONTO CLAY FLOOR. NEEDS FLOOR EXCAVATION, WHICH WOULD HAVE TO HAUL UP SHAFT. (3656)
- ③ 0445994 4801247  
Steep shake hole with descending slot which turns corner and blocks after 2m. (3657)
- ④ 0445919 4801169  
Medium size shake hole with slot in the ~~base~~ bottom which turns bend to a sandy floor. (3658)
- ⑤ 0445915 4801262  
Small double shake hole on slope of Knoll. Both have slumped shafts which block quickly. (3659)
- ⑥ Alf Latham, Gordon Proctor. (3238) 3  
Was dug for 3 hrs, in v low bedding. Slight draft but requires a lot of work, length 4m.

### SAN ANTONIO (3-6 above)

0445950 4801317 ~~MONWBE~~, D. MILNER, J. SOUTHWORTH, P. GOODWIN 4 APRIL  
FOUND IN RECENT CLEARED FOREST. TWO 2M CLIMBS DOWN PAST LARGE BOULDERS TO SQUEEZE INTO SMALL CHAMBER LEADING TO 23M VERY LOOSE PITCH IN A WIDE LONG RIFT. ONE WAY LEADS TO CLIMB OF 3M WHICH WILL NEED BOLTING, OPPOSITE DIRECTION IS A DUCK UNDER INTO A SIDE RIFT WHICH CHOKES BOTH ENDS. A ROOF PASSAGE CAN BE SEEN 9M UP FROM END OF THIS RIFT. BEST RIGGED WITH SRT ON FUTURE TRIPS (3660)

SAN ANTONIO



3 APRIL - ROBERT

## RENADA - SQUIRRELS DOWNSTREAM SUMP.

I SET OFF FROM THE PITCH HAVING FULLY KITTED UP WITH 2 X 7 LITRE CYLINDERS, AS THIS IS THE EASIEST WAY TO GET EVERYTHING THROUGH THE DEEP WATER. HOWEVER, AT THE 10-FOOT CASCADE A SMALL SLIP RESULTED IN A BACKWARDS PLUNGE INTO THE POOL BELOW. NO DAMAGE WAS SUSTAINED EXCEPT FOR A BROKEN CYLINDER TAP. LUCKILY THIS WAS ON MY HALF-FULL BOTTLE LEFT FROM LAST YEAR, BUT THE TAP PISSED OUT AIR WHEN TURNED ON. IT WAS DECIDED TO STILL DIVE, BUT CONTROL THE LEAK BY JUST TICKLING THE VALVE OPEN WHEN NEEDED, IN THIS WAY I COULD STILL MAKE USE OF THE BOTTLE.

AT THE CANALS BEFORE THE SUMP, MY LINE WAS INTACT AND THIS WAS THE CASE IN THE SUMP, SO IT CAN'T FLOOD THAT BADLY. FOLLOWING IT DOWN, THE PASSAGE WAS LARGE AND GLOOMY AS REMEMBERED. IT IS ONLY A COUPLE OF METRES WIDE, BUT VERTICALLY OF UNKNOWN HEIGHT, COMPLICATED BY WASHED OUT JOINTS AND FLAKES OF ROCK HANGING FROM ABOVE. LAST YEAR I CUT THE LINE FREE AS NO BELAY COULD BE FOUND, AND THIS END WAS LYING ON THE FLOOR INDICATING THIS WAS THE ROUTE TAKEN BY THE CURRENT.

MY NEW REEL WAS TIED IN, AND A FURTHER LEFT TURN PASSED A BIG ROCK "CURTAIN" WHICH I HAD THOUGHT WAS A WALL; OVER THE TOP OF THIS WAS PARALLEL PASSAGE, AND A NICE ROCK SPIKE WHICH MADE A PERFECT BELAY. THIS WAS AT ~6 METRES, AND I THEN BEGAN MY ASCENT. LOOKING UP TO SEE IF I COULD SEE A SURFACE, INSTEAD I WAS SURPRISED TO SEE A CLOUD OF SILTY WATER SINKING TOWARDS ME. A HORIZONTAL SWIM OF A COUPLE OF METRES THEN REACHED A CLEAN-WASHED VERTICAL WALL WITH A LITTLE "POCKET" WHERE I COULD 'POST' MY LINE REEL, NOW AT ~4 METRES. AS I HAD NOW USED NEARLY A THIRD OF THE LEAKY BOTTLE, I DECIDED TO SAVE MY NEW FULL CYLINDER 'TIL I COULD TWIN IT UP WITH ANOTHER WORKING SET. IF I GET BACK TO THIS POINT QUICKLY, IT WILL PREVENT THE DISTURBED SILT FROM MUCKING UP THE VIS AND HENCE MAKING ROUTE-FINDING IMPOSSIBLE.

I SURVEYED OUT, COMPLETING THE SUMP AND THE CANALS BACK TO THE END OF PEDRO'S ORIGINAL SURVEY (BUT THE DATA IS ON MY SLATE - LEFT IN FOR NOW). THE FULL CYLINDER WAS LEFT ON A LEDGE JUST BY THE SUMP, THE EMPTY WAS SWUM BACK TO THE LADDER AND LEFT THERE. AN UNEVENTFUL WANDER OUT FOLLOWED - 5 HOURS.

4 APRIL - ROBERT

SWITCHED THE DAMAGED CYLINDER (WHICH I EMPTIED) FOR A WELL-PUMPED 7 LITRE, AND ALSO BROUGHT A SHORT ROPE FOR THE CASCADE TO AVOID FUTURE PLUNGES.

### COMELLANTES

THAT AFTERNOON WENT FOR A QUICK DIVE HERE TO CHECK SOME GEAR I HADNT USED FOR A WHILE. THE VIS WAS GOOD - 6 OR 7 METRES - BUT STILL HAZY. I HAD A SWIM AROUND THE FIRST 100M OF THE BIG TUNNEL, AND REELED INTO A COUPLE OF DEEP MOVES ON THE LHS OF THE PASSAGE. ALSO, I PUT SOME SLACK INTO THE LINE SO IT WASNT STUCK TIGHT AGAINST THE CEILING. I STILL HAVE A COUPLE OF PLACES TO CHECK IN HERE FOR POSSIBLE WAYS ON, BUT THESE ARE SECRETS FOR NOW.



6th April 2012.

(21)

Simon & NATHAN LATIMER

Me & Dad went to Ideopuerta for a walk. Met a farmer called Carlos, who stopped us. Dad (who can't speak Spanish) finally got Carlos to take us to some caves. I forgot the GPS.

Cave 1 - Previously discovered - SITE 1974.

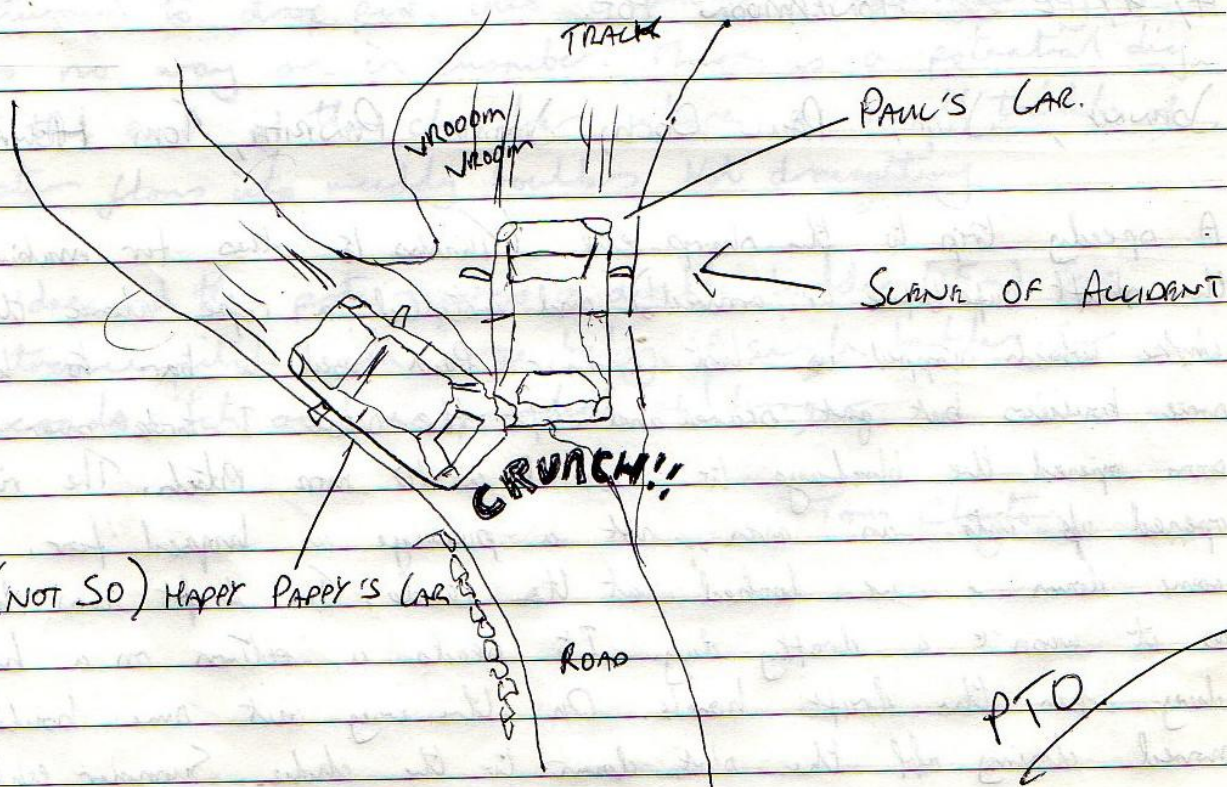
Cave 2 - New Site 3664 - Wide open, large shaft. Needs rope or ladders, at least 10 mms deep. RETURNING Tomorrow.

Description by Nathan Latimer, written by Johnny L.

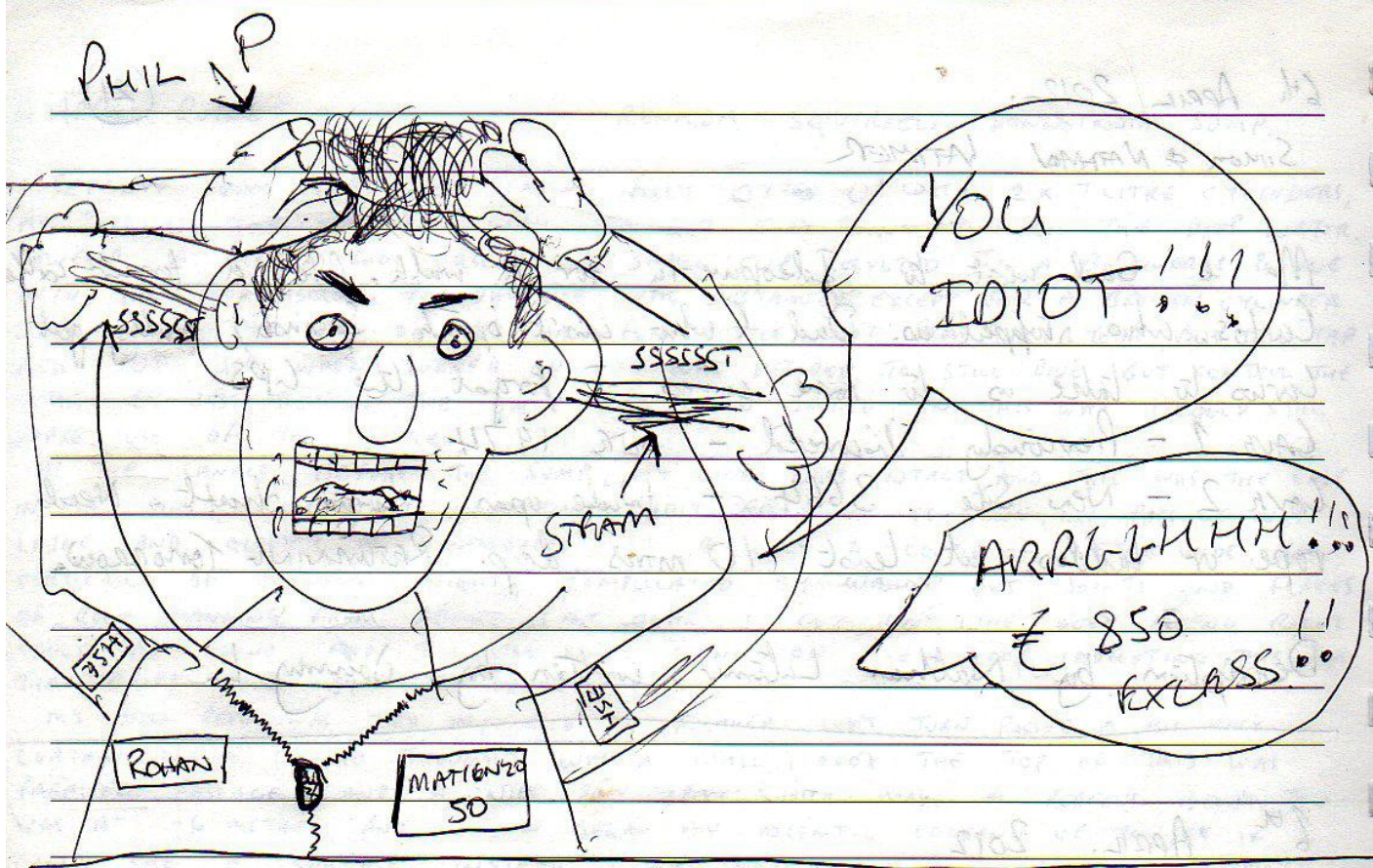
6th April 2012

DAN H, JOHANNY D, JACK, PAUL DODD (EDDIE IRVINE) PHIL PAPARD (PHIL RARD)

Went to Farmer's House (Ra-Namto R.T.A. POT) Paul Dodd & Phil had an accident. See Below.







\* PISS POOR PARKING PERFORMANCE  
PAPPARO.

By DAN.

4/4/12. Moonmoon Pot.

JOHN, JON, PAUL DOLO, JIMMY PARRISH, TOM HOWARD.

A speedy trip to the sharp end (Thanks to others for making the shaft safe before we arrived!) and installed a rope above the choke which stopped us. last summer. Paul used a bar to loosen some boulders but got scared and left the scene. I took over and soon opened the blockage to descend a 10 more pitch. The rift opened up into an aven, not a passage as hoped for. Doh! came down & we looked at the leads. The draft was lost as it wasn't a drafty day. It needs a return on a hot day when the draft howls. On the way out some boulders moved closing off the slot down to the choke. Summer explorers



will need a capping set (at least!) to get back to the bottom

The Honeymoon is not over, just on hold! Johnny Dingle

\* P.S. - PEFINAM DRAFT AT ENTRANCE - WINNER LOVER! \*

5/4/12 2923

Tony Brockbank, Tom Clayton, Phil Rousell, Dave Smith

Dropped through hole in shoke hole to couple of chinks down to a balcony overlooking a large chamber. We will return tomorrow.

6/4/12 2923

Tony Brockbank, Tom Clayton, Phil Rousell, Dave Smith

Returned to drop pitch into chamber. Unfortunately there was no way on in chamber. There is a potential dig at the end of the chamber, where a small trickle of water flows into muddy boulders. Not draughting.

To descend the pot requires a double ladder (15m) for entrance pitch, with large belay. A single ladder for second pitch and a spreader and hanger

Tom Clayton



Thursday 5/4/12, Jenny Cornish, James Cable

Jungle bushing near the longdalen Found several interesting holes:

3641 = Sink.

3642: Hole under sandstone with rift visible below (and shed) stones rattled down about 8m.

3643: 2m wide <sup>gully</sup> rift in limestone <sup>pavement</sup> ~~passage~~ with 3m climb down into choked area with possible dig.

3644: Hole at bottom of shakehole - unpromising.

3645: Top entrance to ~~badger~~ sett. Needs digging but can see a chamber and rift leading off.

3646: Bottom entrance to badger sett 3645.

3647: ~~Large~~ Dig on side of shakehole. Looks deep but full of rubble.

Friday 6/4/12. Jenny Cornish, James Cable, Slim, Dr Arthur, Simon Cornhill.

Dug open 3645 and inserted Simon into chamber both armed with a hammer and machete to fend off disgruntled badgers. Thankfully, there were none!!

The ~~shaft~~ went on for about 30m ~~more~~ before getting bright and awkward! It could be pushed further by Lewis good at bhrouting! Cave named "Badger's Back Passage" and did not have a strong draught!



Friday 6-4-12

25

Paul + Luke to pair of holes in field below bend in road near the Torno turn off. Holes about 10' apart - Squeeze into right hand one into 2m of passage to 90° turn to the left. Soil + stone choke with voice connection to the left hand hole. First draft in. lots of stal/floestone and 1 bat. GPS'ed 0452139 / 4801978. Site 2761

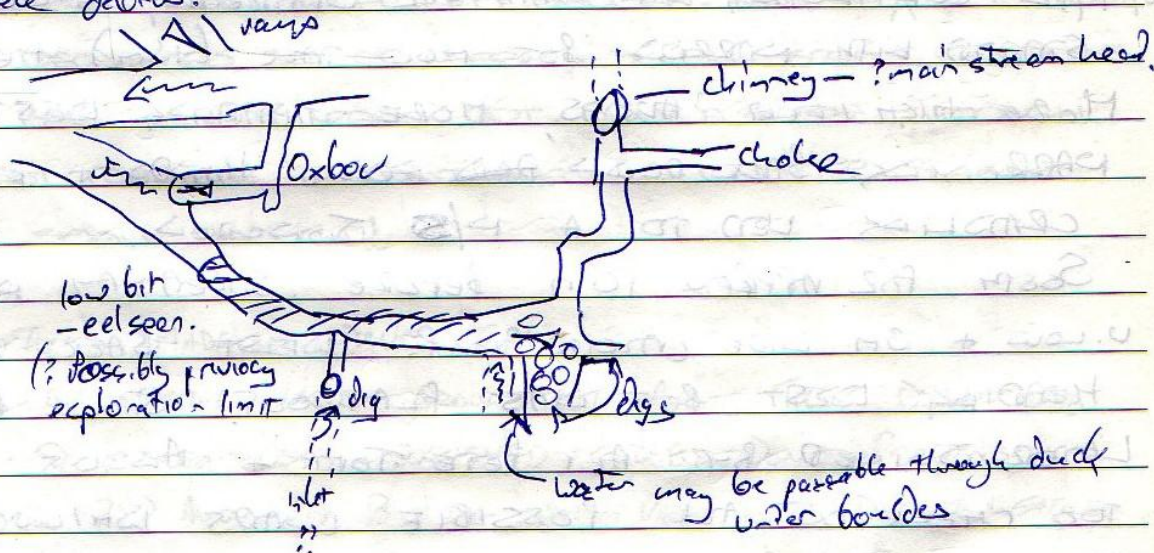
Then over to dig below barn near to Salford's megadig Head of valley above 415. Not much done as started to hail/rain.

Site no. <sup>3559</sup> Drafting in. / Anell Payer Bell (Luke + Paul Gelly s'ed)

3.4.12 Lipada - found 3222 & surged to link to Exoda.

Then surveyed on downstream in main passage but couldn't locate corridor to bottom entrance.

Oxbow inlet pushed beyond limit on 1970s survey to choke with watercourse in on R.H. side. Dry passage on left leads to bend of 5m river with sound of ? main stream + good draught. Eel & fish seen in inlet streamway. Fair flow & draught, much surface debris.





CARMEN + CHRIS.

5/4/12 SIMA BAR. UPSTREAM SURVEY CONTINUING ON  
FROM PREVIOUS SURVEY THE YEAR BEFORE WITH  
PATRICK. AFTER THE WET STROPS THERE WAS AN  
OLD SURVEY MARK ON THE WALL (C) - POSSIBLE  
END OF PREVIOUS SURVEY ONE YEAR AGO + ABOUT  
10m IN.

CONTINUED FOLLOWING MEANDERING STREAMWAY WITH  
FEW CASCADES. THE MEANDERS STRAIGHTENED OUT  
TO A STRAIGHT LINE NARROW STREAMWAY HEADING  
WEST BEFORE MORE MEANDERS + CASCADES APPEARED.  
SOON AFTER BROKE INTO LARGE STREAMWAY  
GIVING BIG LONG SURVEY LESS ALSO HEADING WEST  
PASSED UNDER A FEW VERY HIGH ARCHES, UNABLE TO  
SHINE LIGHT TO TOP.

FINISHED SURVEYING AT NATURAL PASSAGE THAT  
HAD OPENED UP GIVING A FEW HIGH LEVEL PASSAGE.  
290m SURVEYED HEADING INTO NO MASS LAND.

CARMEN, CHRIS, PETE, ALI, AUGUS + TOM  
6/4/12 CONTINUING WITH SIMA BAR UPSTREAM, THIS TIME  
STARTED WITH NARROW BUT NOW THE (13m) MEANDERS  
MORE HIGH LEVEL ARCHES, MORE HEADING WEST,  
NARROWING BACK DOWN AND NOW. HANDS + KNEES  
CRADLING LED TO A H/S JUNCTION.

SOON FOR APPROX 10m BEFORE STREAMWAY, NOW  
V. LOW + 3m WIDE UNDER PASS WEST BACK TO  
HEADING WEST BUT WAS FLAT OUT. STILL DRAGGERS  
LATER JOINED BY ALI PETE TOM + AUGUS ~~WAS~~  
TOO CHECK OUT ALL POSSIBLE LEADS WHILE NOT  
EXITING CAVE.

THE PASSAGE WITH TOM'S CAME ON IT, LEAD TO  
SCALLID LIQUID MUD WADING + UNFORTUNATELY  
BROKE INTO A HIGH LEVEL MARE OF OLD  
DRY PASSAGE - SOFOBED UNTIL LIGHT RAN OUT.

+ EXITED. (GIVE BIG 10 PUNCHES 10m HIGH.  
8m WIDE.



(27)

7/4/12 TOAD, ~~MAD PHIL~~, DAVE, TOM, JOHN, LISA, CHRIS  
CARMELO.

INTO CDO TO POT AS ONGOING, LEFT LEAD TO BED  
UNFORTUNATELY IT WENT INTO SOME LARGE  
WALKING SIZE 5M WIDE 3M HIGH DRY PASSAGE.  
WITH MANY WAYS ON, MOST OF WHICH CHOKED  
QUITE QUICKLY. UNFORTUNATE BECAUSE SLIGHTLY  
UNEXPECTED + ONLY HAD 1 SURVIVAL KIT BETWEEN  
US WHICH WAS BEING USED BY OTHER TEAM.  
PHOTOS TAKEN OF CLOO 9 + MORE ON WAY OUT  
ALSO DELICIOUS ALL DOWN PITCHES.

3668

4-4-12 JOHNNY, JUDE, PAUL D, JAMES C. Tom Howard

- OLD FOSSIL CAVE NEAR HONEYMOON POT (THEIR TRIP)  
AFTER DIGGING HONEYMOON POT TO A DEPTH, WE  
DECIDED TO HEAD OFF TO FIND MORE CAVES/HOLES. AT  
WALL LEVEL TO THE BOTTOM OF THE FIELD (LEFT OF WOOD)  
A WIDE BUT LOW FOSSIL ENTRANCE LEADS TO AN AUKW-  
AND SQUEEZE NEXT TO A DEAD BADGER. BEYOND <sup>AND TO THE RIGHT</sup> IS A VERY  
WELL DEVELOPED SET OF PASSAGES, ALL SEEM TO CLOSE  
DOWN BAR ONE THAT LEADS OUT. ONLY A SHORT THROUGH  
TRIP BUT POSSIBLE TO CONTINUE LEFT AFTER SQUEEZE  
IF YOU SMALL ENOUGH!

7/4/12 TOAD MADPHIL DAVE TOM


WENT TO WITH LARGE GROUP, AT AVEN THEY DISMOUNTED  
TO LOOK @ OTHER LEAD. SURVEYED CLUBS DONE PREVIOUSLY  
+ LOOKED @ 2ND AVEN BY BOULDER OUT. VERY WET DUE TO WEATHER  
30M HIGH + PROBABLY WORTH BOULDERING. MESSAGE BACK FROM OTHER  
TEAM WAS THEY FOUND A BIT, BUT EURED TO BOULDER CHOCOE. DIDNT  
RELAY HOW MUCH PASSAGE WAS FOUND, + WASNT RAVING SO LEFT IT  
AS HAD TROU OUT WITH HEAVY RAG'S. DIDNT CATCH UP OTHERS. LEAD  
STILL GOING. DISAPPOINTING TROU.



3638

(Belvecia)

5th april New Cave Noodle put? Andy, Simon, Nathan, Lotman  
Open 3m dia shaft ~~10m long with (impressive)~~ delayed from tree  
diameter

 onto sloping floor of ~~dry~~ debris, small window  
leads to second split pitch 10m & 22m.  
Small winding passage leads off from bottom of  
pitch for 30m to small enlargement @ 4m drop  
continues to a hole in floor 8m blind,  
at roof level light passage lead ~~sto~~ to further drops  
of 8m this time into chamber. route out of chamber  
is sloping passage which degenerates into a crawl  
with possible digs at terminal chokes.

5th april.

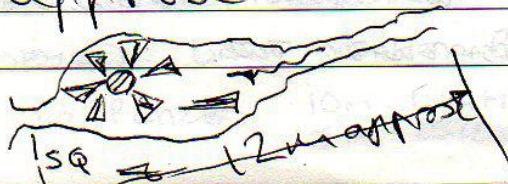
New cave (aduperto) Andy, Simon, Nathan, Lotman

3664 large 3m wide - 10m long - 15m deep  
feature. laddered in with 25 foot ladder to  
slope of debris leading to horizontal slit into  
alcove. at the back of alcove flat out passage  
leads off and through stal' grill, leads to  
chamber with inlets and holes down.

We had a good look at the holes and  
although they are taking water, ~~draft~~ drafty,  
and 1m dia, digging is necessary to progress.

7/4/12 Ali, Dave, Peter &

Espada Sotter entrance (dry)  
down slope left hand wall dig  
went straight into chamber with lots  
of muddy stal and small inlets  
12m length approx





2nd APRIL - 7th APRIL

(29)

THE ELDON & TSG MARTIN GRAYSON, DAN.

SNAKE CAVE.

CARRIED ALL DIVING THROUGH SUMP 1 IN PREPERATION FOR DIVING SUMP 2. WE LOOKED AT THE HIGH LEVEL DRY PASSAGE WHICH ENDED IN A VERY SMALL GREAM PASSAGE. NO WAY ON THAT LOOKS ANY GOOD.

SUMP 2 WAS DRED TO 14.6 METERS DEPTH WHERE THERE IS A STEEP SANDY TIGHT  $45^{\circ}$  INCLINE WHICH BECAME VERY TIGHT WOULD NEED DIGGING.

8th APRIL

INVISIBLE CAVE - DAN, MARTIN GRAYSON.

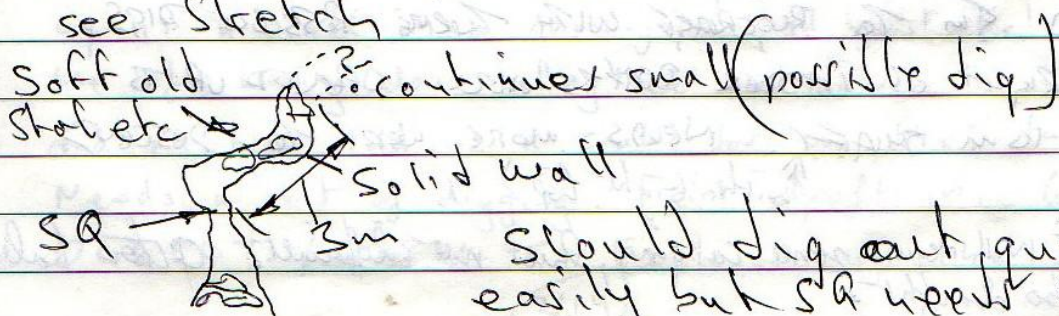
THE SECOND SUMP HAS NOW BEEN DRED AND IS 10 METERS LONG. WALKING PASSAGE AND A BIG AVENUE THE OTHER SIDE.

8/4/12 Ali, Peter E, Chris, Lanc, Paul + Bob + Dave

Visited stake/depression, near Radio repeater but nothing to be found.

Then visited (3209) with a fair bit of chiseling it was opened up and a short squeeze led to continuation see Sketch

Soft old  
skat etc





8.4.12 Espada - A Well Binding

Surveyed area of ditches out of drainage  $\frac{1}{3}$  way down & pasture  
under sandy overflow passages - later cont. beyond junction?

MONCOBE

5th & 7th APRIL '12

NEIL McALLUM  
DI ARTHURS  
SI CORNILL  
TOM HOWARD

2538

SOFT DOWN FROM  
WATERY JUNCTION

NEIL & SIMON STARTED A BOLTING PROJECT IN THE BIG AVENUE  
ON 5th APRIL & LEFT IT ON GOING. DI WAS IN SUPPORT ON  
THIS TRIP.

A RETURN WAS MADE ON THE 7th WITH YOUNG TOM ALONG  
TO HELP DI WITH SOME SURVEYING. FIRST STOP WAS THE INLET  
ON THE LEFT ~~LEFT~~ A LITTLE WAY DOWNSTREAM FROM THE  
SHORT PITCH IN THE MAIN STREAMWAY. WHILE DI & TOM  
SURVEYED THIS HILL & SIMON CLIMBED THE AVENUE AT ITS  
END. A CLIMB OF AROUND 30m WAS MADE USING STALS &  
NATURAL THREADS AS RUNNERS. UNFORTUNATELY NOTHING OF  
INTEREST COULD BE FOUND AND I DON'T THINK A RETURN IS  
NECESSARY.

THIS DAY WE RETURNED TO WATERY JUNCTION TO PUSH THE BIG  
AVENUE TO A CONCLUSION, WHILE DI & TOM WENT FOR A WANDER  
AND ~~WANDERED~~ CONTINUED FOR SOME SURVEY WORK. THE AVENUE WAS  
CLIMBED TO AROUND 35 TO 40m FOLLOWING WHAT APPEARED  
TO BE THE MAIN WAY. THE VERY TOP IS ABOUT 10m ABOVE  
THIS BUT SOFT CALCITE STOPPED PROGRESS BUT IT LOOKED  
VERY UNPROMISING & APPEARED TO BE BLANK ALCOVE'S &  
SOLUTION POCKETS. IT WAS VERY STILL UP THERE VERY LITTLE  
IF ANY AIR MOVEMENT! THE ROPE REMAINS RIGGED TO  
ABOUT 30m WITH A GOOD STANCE AT 20m FROM WHERE  
A BOLT TRAVERSE COULD BE CLIMBED OVER TO ANOTHER  
CONTINUATION OF THE AVENUE UP A STEEP FLOWSTONE CASCADE.

1220

9/4/12

BOTTLEBANK, TOM HOWARD, ED MASON

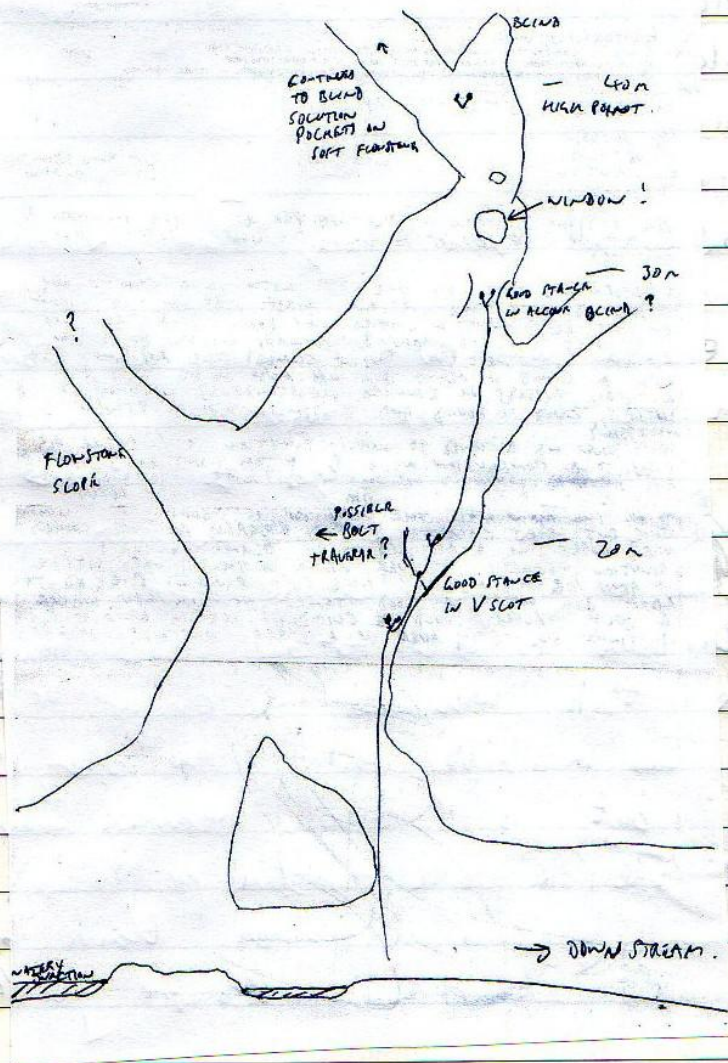
S. Vega

PAUL RAPARD & BOB TOO GOOD

DESCENDED SW TO BLOCKAGE WITH THREE POSSIBLE DIGS  
ONE TO RIGHT OF LATTER DEATHS WERE OPENED UP TO  
TURNER 10m SHAF. NEEDS MORE WORK TO DESCEND  
SPRAY (with light top)

Will require some capping, but not difficult. Other holes  
near by also draught.





2538  
Aven

(31)

Saturday 7th April 2012.

James C., Luke & Paul G.

Went to valley above Hornedo opposite side to Vaca. Slogged up + down 'Eucalyptus valley'. Nothing at all, all sandstone and shale beds and an immature stream. Specialist lady said 'No caves here'!

Then to hillside above Nintueto, Morcobe area. Again a eucalyptus planted V shaped valley with a stream. Half way up is a sink in a cross-joint and just below it on the left looking down valley are two caves. 1st is just 2m and choked. 2nd is a crawl for 2m then turns left. Needs a bit of digging. Feist draft in. GPSed at 0445473 / 4797498. Explored up the valley

3669



to GPS 0645454/4797374 before climbing out and back across the fields.

Sunday 8/4/12: Simon Corbally, Dave Arthurs, Slim, James Corbally.

3669 Explored entrance which was draughting out strongly today. Crawl in leads to chamber where daylight enters from shaft above (which Simon managed to climb out of to reach the surface). Inside the cave a passage into the hill is blocked by a large limestone block, beyond which looks like a dry down into a chamber and continuation of the cave. The limestone block will need a snapper or two to pass. The cave lies in a valley with no other sides of (speleological) interest, but is directly between Cuern Monrobo and Cuern Verde (the possible resurgence for Monrobo) on the map, and Monrobo heads into an ~~area~~ black hillside where a large depression is marked about a kilometre further over.

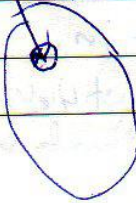
Also looked at the valley Monrobo stream above 3669 upon far as the ~~road~~ but ~~was~~ was nothing there!

Cuern Verde

3669

Monrobo

Trees on top of  
big hill where  
the former sand mine  
was by shaft



x Cuern

Monrobo.



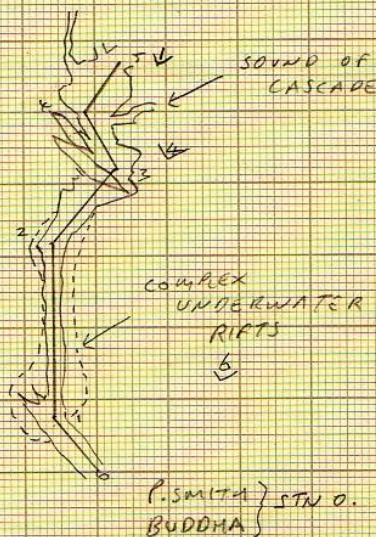
9th April

RENADA

ROSE (DIVING??) JOHANNY DINGLE, JUDE + RACHAEL  
(SURVEYING??)

DIVING BIT :- VIS IN SQUIRRELS WAS A DISAPPOINTING 1.0 METRES, TOO MURKY FOR ROUTE FINDING. SO ALL GEAR (EXCEPT BOTTLES, ETC) BROUGHT OUT. SEE SURVEY BELOW :- FROM PETES END POINT TO START OF SUMP. DONE WITH DIVE COMPASS AND 10M MARKED FIVE LINE. (ALL LEVELS AT WATER LEVEL)

|     |    |      |
|-----|----|------|
| 0-1 | 10 | 320° |
| 1-2 | 24 | 0°   |
| 2-3 | 13 | 40°  |
| 3-4 | 9  | 330° |
| 4-5 | 8  | 35°  |

N  
↑

8th April 1340 S. Vega, Phil P. T. Battobank, Tom Howard  
Ed Mason & Bob Toddgood.

Drove up from Arridinds side, but parked at top of concrete ramp as road further on is poor. This road goes to wind speed most on top of ridge near 1340 - used to test for wind turbines.

P.P. descended 1340 to floor some 25m, putting in 2 balls on way for SRT. Floor is large some 8m x 5m with 3 further possible dips <sup>down</sup> going off to North, South & East. The best-looks like the one to the South, where a small stream seems to sink in wet weather, & rocks can be dropped some 2m to a floor, easy dig with BAR & two people. No drought today, probably due to reversing from out-wind at night. Will cook at again in Summer when hot.



9th April 2012 South Vega Juan & Penny

Parked on the TV Mast track where the road turns up and deteriorates. Then walked west across the field below the TVM track, just above the Dairy dig and along to dig 1929. Walked back mainly under the cliff line.

Sites found, nearly all small with not much hope.

3670 30T 0452825 4795015 Alt 343 Slope down to narrow choked rift going into hillside.  
L=3m

3671 30T 0452704 4795058 Alt 350

2m long rift shaft. Old posts and white bag at bottom. Undescended. 5m deep.

3672 30T 0452672 4795048 Alt 363m

Small top with white bag. 4m drop to another white bag. Fenced with orange markers

3673 30T 0452622 4795074 Alt 361m

Small hole. 3m deep. Just above fence.

3674 30T 0452325 4795183 Alt 379m

10m long rift. Looks about 5m deep under large blocks. Small shelter 10m down the hill.

3675 30T 0452300 4795197 Alt 377m

Small shaft top into very narrow shaft. Undescended. About 6m deep

3676 30T 0452257 4795203 Alt 383m

Two holes. The eastern one seems to be about 5m deep.

3677 30T 0452246 4795207 Alt 383m

Fenced L shaped shaft with tree. Only 3m deep? Cow bones at bottom.

3678 30T 0452090 4795221 Alt 381m

Animal shelter. Length is 3m

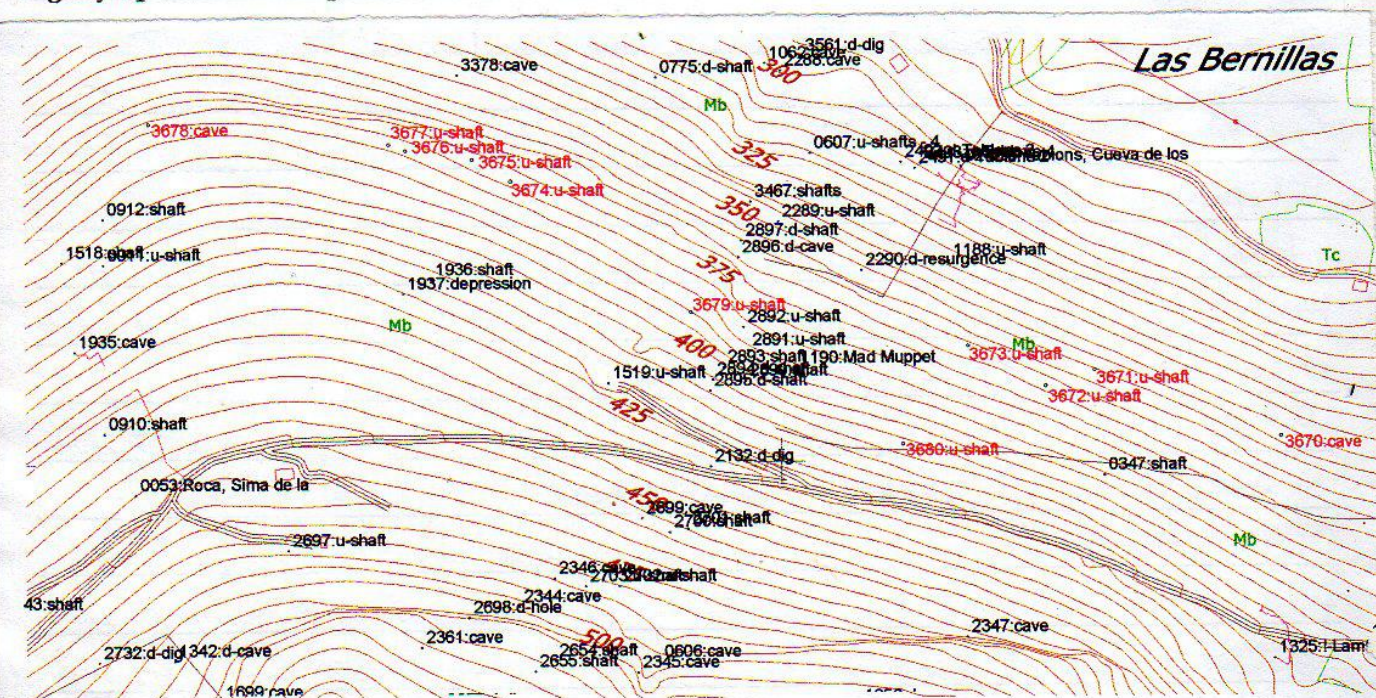
3679 30T 0452442 4795097 Alt 390m

Fenced shaft. Depth unknown.

3680 30T 0452579 4795011 Alt 402m

Barbed wire around small shaft. 2m drop to a very narrow further 2m?

3467 Explored. 4m climb down to rifts blocked with sandstone blocks. This entrance is slightly uphill from GPS position?





# Eldon & TSG - Non Diving outings. - Jon Pemberton

01/04/2012 - Snake cave (NABO - 3357).

- J. Pemberton, Jess Eades, Lisa Wootton

Followed divers in and once they had gone we headed up the dry sandy crawl. Lisa pushed on ahead and got to a final point which was too low to the left and required digging to the right. This has not been surveyed and really would benefit from a distoX team.

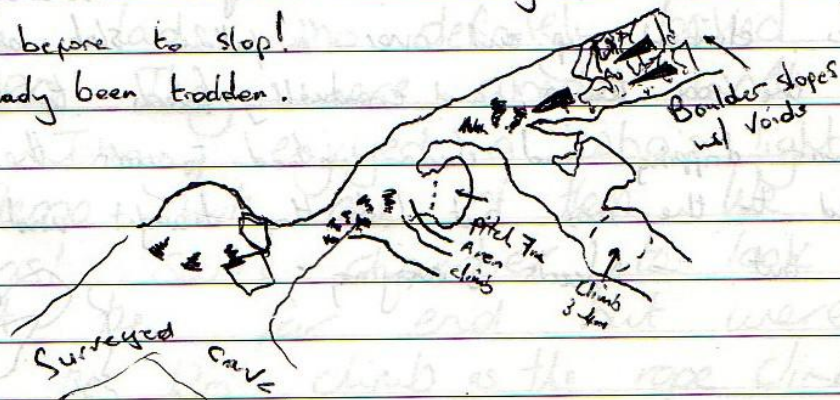
02/04/2012 - El Cubbilou (2538)

- J. Pemberton, Jess Eades, Lisa Wootton, Bob Toogood

Trip to look at possible climbs and a look around the cave.

Got to the point where cave enlarges and turns left after slope up headed right under boulders to another large area which does not connect with surveyed passage! Possibly passage off to the right up a climb, pitch down 7m (clean washed) further on leads to a large boulder slope with holes/voids in the roof. To the right leads to a draughting higher level passage about 3-4m above a muddy pool with holes going down on the left before to stop!

\* This had already been trodden.



We also headed further on and had a look at some drippy shafts on the right but not descended. Once at the very end tried 'loosening' a few feet but this proved to be slite! Went out fed up!

04/04/12 - Moncobe area Surface prospecting

B. Toogood, E. Mason, Lisa W., J. Pemberton

Headed up the dry valley which looks fairly blank. Once out of the valley we only found one shaft #3666 which was descended for 6m to a choke fill with cattle skulls. Nothing else found



Further up the valley as it was mainly shale.

05/04/12 - EL Cubillon

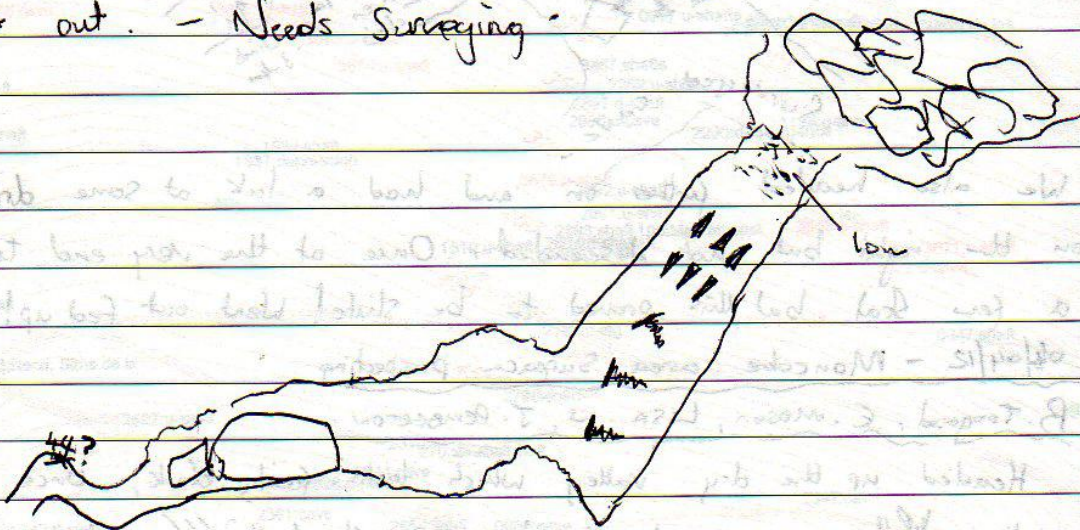
DAN HIBBERTS, J. PEMBERTON, LISA WOOTTON

DAN climbed into draughting hire level passage not on Survey and continued for a while passing avens and eventually ended at a 60° boulder slope up which looked a Tad Dody - Not climbed. Lisa dropped down clean wash pitch. Fun not on Survey. This led to a Tight Section which was not entered as SRT was not removed rope was left in the chamber! Dan climbed aven on corner of Survey for 25m to a number of muddy large pitches, not descended.

07/04/12 - Toad

J. PEMBERTON, LISA W. CARMAN & CAP N CHRISP

Fun Sobering trip to cloud 9. Pushed passage off from where carman left off in 2008 station 44? possibly this "panda boulder slope". followed through a meander to a long chamber, climbed up and over a fallen slab and followed to where the roof lowers and eventually leads to boulder choke. This was dripping and clean washed towards the end. I climbed to the roof but lost the draught and followed the others out. - Needs Surveying.






7<sup>th</sup> April 2012 - Valline Pull-Through - Jenny C, D3, Mrs D  
Raquel Dingle.

We woke up to pouring rain and a very squalid campsite. Enthusiasm was in short supply. Rach was less than impressed with her digs. D3, myself, Rach + ESP sat in Pablo's feeling in despair at the stair rods lashing down. The situation cheered up when we realised that Footleg was waiting at the airport in Santander and Paul had to dash off to collect him. OOps! Poor Daddy.

Johnny, Jenny, Rach and I eventually organised ourselves for a Valline through trip. We had to take 2 x 90m ropes as no short lengths left! A great trip, stunning cave and we were fortunate enough to be cheered down the final pitch by the Secora Español! 12 GORGEOUS Spanish Cave Rescue lads who definitely looked nothing like the CRO! They were almost worth breaking a leg for! Johnny enjoyed a 'who's light is the brightest' demo with one of them. We had a wonder past swirl chamber to look at a dig at the far end but were ~~halted~~ halted by the 12m climb as the rope climb looked iffy and we didn't think it was SET and had only bought one kit from the bottom of the pitch. Rach enjoyed her 1st Spanish speleo trip. She likes caves that are dry and that she can dangle on ropes and not touch the sides in!

Mrs D 



9th April 2012 - Reñada- Rupert, D3, Mrs D, Raquel D

Invited to join Rupert on his diving trip to Squirrels Passage. While Rupe went to dine we had a look around Crowbar Passage after Pete Smith told us it was worth it. A 5 minute dig got us down into a good sized passage with ~~lots~~ lots of leads. Surveyed about 200 metres ~~but~~ but left ~~the~~ leads for next time. 6 hours underground exiting to a blue sky and sunshine. Rupert didn't due due to poor vis, we carried all his gear except bottles ~~out~~ out.

Simon Dingle got a kick on the end of his nether regions, removed successfully by his mum at Las Colzadillas.

7/4/12 Diane + Tom Howard.

Simon + Nez

Marcbie

Tom & I surveyed an inlet that leads to an aven, continuing from previous survey

Nez & Simon climbed this aven as we surveyed. Following this we left Nez & Simon at the big aven above the pool and surveyed the inlet from the right (incomplete)



9/4/12 Jerry & James Carlisle

(39)

Walking on area above Cobadal towards Cueva de Capo.

Several new caves found:

3681 - 30T 448808 4797009 - ~20m shaft below tree. Undescended.

3682 - 30T 448771 4797040 - Hole in grass? 10m shaft.  
! Gas to full dam - another shaft very close to first with grassy bridge between. Undescended.

3683 - 30T 448757 4797025 - Pair of shafts with bridge between. ~7m deep. Undescended.

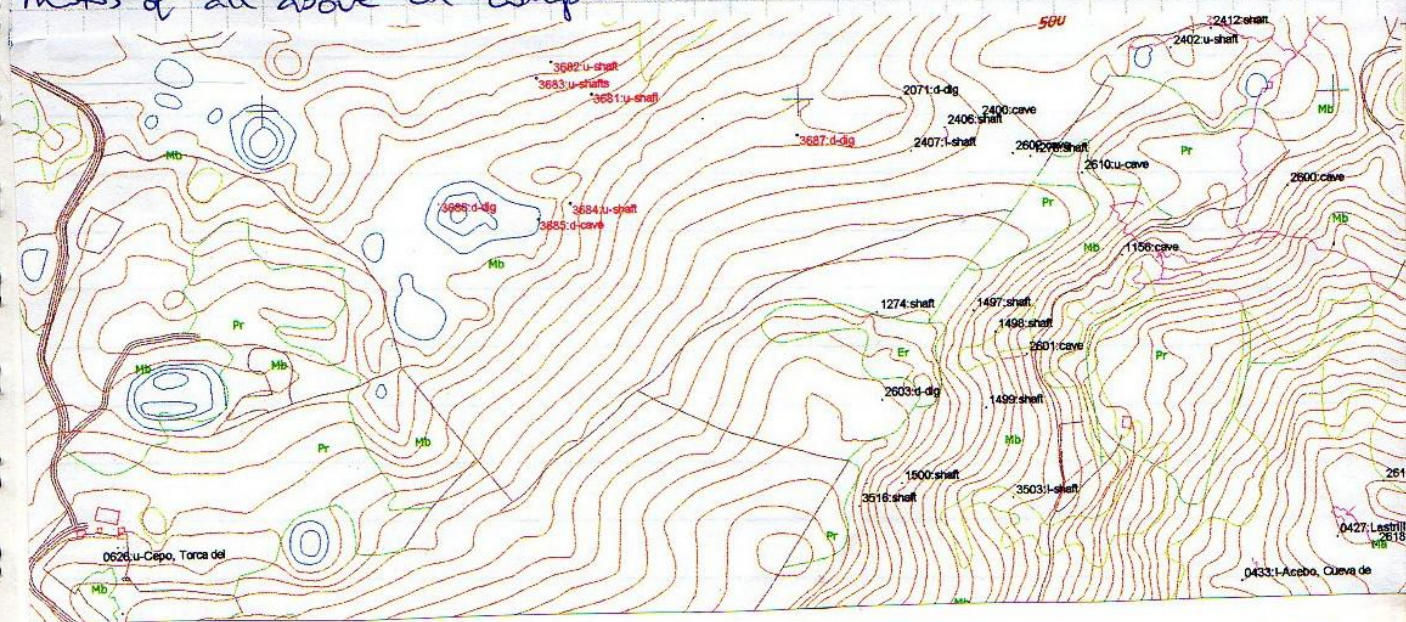
3684 - 30T 448786 4796908 - Sloping hole in side of shakehole with cliff. ~15ft deep with possible passage at bottom. Faint draught. Undescended.

3685 - 30T 448756 4796894 - Small, very strongly draughting hole in ~~side~~ next shakehole down valley from 3684. Very cold draught. Diggable. Undescended - would need snappers/caps.

3686 - 30T 448663 4796910 - Small dig under low cliff at bottom of shakehole. Seems to take water in wet weather.

3687 - 30T 448999 4796967 - Collapse in logging track. Dig. Cave visible beyond narrow entrance - may need caps/snappers - unpromising dig.

Photos of all above on computer.

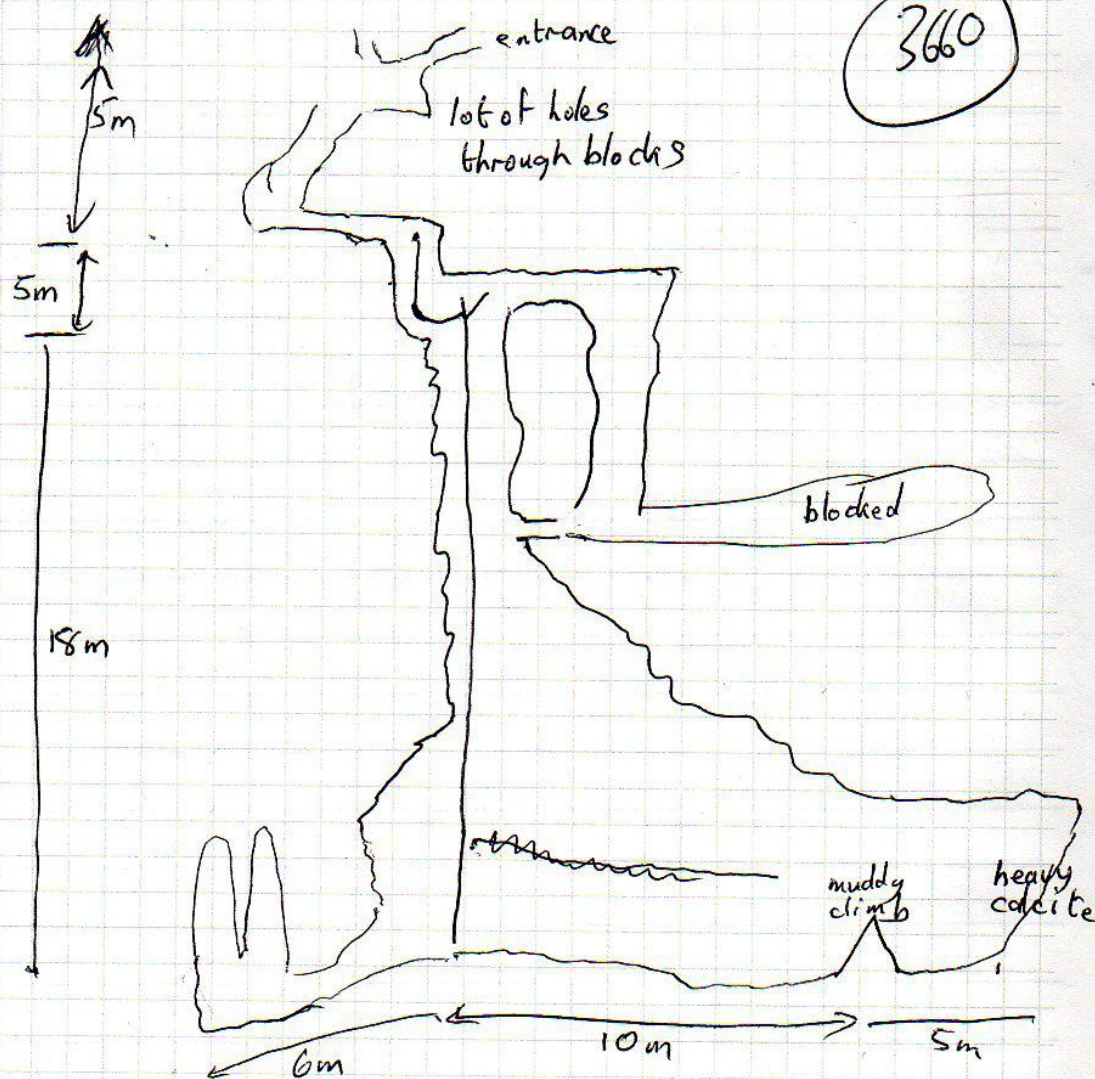


by the river used about 30 feet to where we got to the cave and then started  
by map and stat. The place was said to be a cave, but



0445950 4801317 8 APRIL 2012

ALF LATHAM, PHIL GOODWIN, DAVE MILNER, JOHN SOUTHWORTH  
THE 23M ~~PITCH~~ RIGGED FOR S.R.T. CLIMB AT END OF  
RIFT BOLTED TO SHORT SECTION OF PASSAGE ENDING  
IN CALCITE CHOKES, SMALL PASSAGE SEEN HALFWAY  
UP CALCITE BLOCKAGE WHICH WOULD REQUIRE CAVING,  
NOT VERY PROMISING. THE ROOF PASSAGE ~~SEEN~~ AT  
OTHER END OF MAIN PASSAGE ARE JUST SOLUTION  
TUBES.



rift on bearing of  $80^\circ$



## MATIENZO log book

C:\USC\caving\Caving\_rest\misc\logbook\logbook-sheet.cdr

(41)

Please include at least **date** of trip; **people** involved and, if appropriate, cave number / name;  
new passage **description**; new **GPS entrance positions**; tie-up with **other trips/dates**;  
entrance position or passage **sketches**; list of **tackle required** (if new); trip **highlights**; **safety** notes, etc

1cm

08/04 H. Long - Lluvea area

Is 1986?

- a). In face of small scar above track. A small cave entrance to a neck 2 metres in thro' which a further 2-3 metres of small tube can be seen. This may be a known hole. GPS 0455448.4798761 ~~3688~~
- b). Small, diggable cave under outcrop in gully above track. Floor inside drops 2 or 3 feet out of sight. GPS 0454540.4798297. (3689)
- c). Small opening in scar leads straight onto 3 metre drop to 'floor' of rotting animal remains. GPS 0454863.4798369 (3690)
- d). Big, walk-in entrance in scar at back of depression. 20 ft in is an artificial wall with a hole thro' at left side. Beyond, passage splits to left and right at a stal. column. To right steps up into a hands + knees crawl, lowering to flat out after 20 feet. To the left goes 20 ft walking to a partially walled up window into a chamber with sloping floor. At far side is slope up to an ongoing passage. Total length seen c 100 ft. GPS 0454772.4798357 (3691)

09/04 A. Latham + H. L.

(3691)

Returned to cave at Lluvea and explored further. Passage up slope at far side of chamber was pushed thro' a tight spot and then by digging up a slope (largely by Alf) the passage could be seen to continue for at least 25 feet but needed digging most of the way. This was draughting out. The crawl by the pillar went about 30 feet to where way on lowered and was blocked by mud and stal. The place was surveyed and photos taken.



5<sup>th</sup> April

John Southworth, Phil Goodwin  
Reference point 0446451 4796602 Valley Bottom

(A) 10 metres up East side of valley, small shake hole with 3692  
Boulders at the bottom has small hole which drafts well.

(B) 65 metres on a bearing of about  $240^\circ$ . 3693  
On west side of valley up into a reentrant with evergreen trees.  
Small cliff face on the left with boulders. Hole down between boulders  
gives access to 3m climb down. Cave slopes down for 6m then slopes  
for 8m  
up over calcite to small chamber. Blocked in all directions.

5TH & 6TH APRIL - JOHN SOUTHWORTH, GORDON PROCTER, PHIL GOODWIN, CHRIS GAMM,  
3420 (WASHING MACHINE CAVE) DAVE MILNER, ALF LATHAM, PHIL PARKER.

FURTHER DIGGING OVER TWO DAYS TO EXTEND LOW, SANDY CRAWL. APPROX  
<sup>10</sup>  
~~20~~ FT OF PROGRESS. MORE DIGGING NEEDED.

8TH & 9TH - 3420. - SAME TEAM AS ABOVE.

~~APPROX 250 FT~~ OF DIGGING GOT THROUGH INTO A FURTHER 170 FT OF  
PASSAGE DOWN 18 FT PITCH. MAINLY WALKING SIZED PASSAGE, ENDING IN  
BLIND HOLES IN THE FLOOR. ESTIMATED TOTAL LENGTH 250 FT.

MAIN ROUTE SURVEYED, DATA TO FOLLOW. INLET TO BE SURVEYED.



8<sup>th</sup> 9<sup>th</sup> 10<sup>th</sup> APRIL

(43)

INVISIBLE CAVE DAN H, MARTIN G.

MARTIN AND I WENT TO INSPECT Sump 2 INVISIBLE CAVE. DIVED THROUGH LAYED 10 MTRS OF LINE. WALKING PASSAGE BEYOND WITH LARGE AVEN ONE OF WHICH IS IN A SIDE PASSAGE. A LARGE PASSAGE CAN BE SEEN GOING INTO THE RIFT. WOULD BE AN EASY CLIMB. STREAM PASSAGE CONTINUES FOR A TOTAL OF 150 MTRS. TO Sump 3 WHICH IS EASY 15 MTR SUMP. A SHORT BUT BIG PASSAGE CONTINUES WITH LARGE AVEN ABOVE TO Sump 4 THERE IS A BYPASS FOR Sump 4 THERE IS AN UN-EXPLORED PASSAGE THROUGH THE BYPASS. Sump 4 TO Sump 5 IS ONLY A SHORT DISTANCE Sump 5 EASY AND HAS A LARGE EAC IN IT. BEYOND Sump 5 IS A SHORT WALKING PASSAGE TO Sump 6. Sump 6 IS 4.9 MTRS DEEP TO A VERTICAL POT WHICH HAS TO BE ASCEND. TO Sump 7 WHICH 2 MTRS DEEP AND ONLY SHORT. THE PASSAGE BETWEEN Sump 7 AND 8 HAS A LARGE AVEN ABOVE WITH LEAVES AND STICKS AT THE BOTTOM. (GREEN LEAVES) Sump 8 DESCENDS TO 6.6 MTRS AND CONTINUES.



10-4-12 Espada - Phil P. Pete Bayer ~~Alto~~ Angus Santi Ali.

Surveyed up road from bottom entrance & PP found way up into large chamber with run in with surface debris at other end. Followed draught through dodgy choke to squeeze which only P.K. could pass - not sure if ~~this~~ this is route passed in 1970's but is only possible route at present.

Drove round to top entrance & corrected survey to downstream end.

Loaded & inlet passage surveyed on previous trip in (and) section.

PP dived under boulders to reach choke beyond.

Surveyed some stream passage further back towards top entrance.

---

Surface survey of 103 → 1801 actually goes to 1800. ✓  
Put back old 1801 coordinates & change 1800 ✓

---

Ali has Espada 103 ~~surface~~ survey to draw up.

---



Thursday 12<sup>th</sup> April. Moncobe main valley taking water. Alf Latham, Phil Goodwin, Dame Milner, John Stiles.

Main Moncobe valley. Co-ords from Sig Pac EDSO.

(A) 445 691, 4796 427 → EWS 79 445682 4796425 (3695)

3m shelter in cliff - cow shelter. L Bank.

(B) Two small cones at or above stream level L bank

(C) 445704, 4796 409. 3 x 3m low cones (3696)

(D) 445712, 4796 403 R Bank. (3697)

side of 3m in snipping choked cone 4m x 2m

(E) 445507, 4796 378 L Bank. Undercut (3698)  
of massive lstone bed leads to 10m long cone. Crawl to  
small area with flood debris. Ends in tight rift  
No drought detected.

17/4/12: Phil Payard, James Cuthbert

Went digging at site 3685. ~~Went to~~ opened  
up entrance to body sized but no drought today.  
Can see for about 4m until corner bolt, which  
looks like bright light. It has leaves all along it, which  
Phil & I think are have been sucked up from the surface.  
Needs about 23 hrs digging with spade & hoe to  
reach water.

Also dropped bag of phos 3681, Went down one ladder  
to wedged block where disko measured 14m deep below.  
- This job with theory that sandstone bed is at this level.



3682?

Sites 3683 & 3684 appear to be a common  
rft bubbling a sandstone bed about 1m thick.  
We followed this into woods to site 3694,  
where the water from sand rft resurges and runs over  
sandstone for about 15m until it sinks in deep lines here  
shaft (same, 3694) - This was descended for about  
8m into choked cross-rft with no down way  
on.

13/4/12 Terry & James Carlisle  
Walking above Secadua. (3699)

Very unproductive walk due to very branching  
eucalyptus woods and high fences.

One cave found - 3699 - just above a  
new road out of the valley.

Dry in a field with chopped-down trees  
surrounding it. Stream heard not far below the  
hole, but rocks sound like they land on  
plastic. No sign of water resurging in the  
valley below.

13/4/12 Juan + Penny. Walked above river along Cacavuso track to  
see flooding. Water in overflow channel and sinking  
below entrances.

Water heard on hillside below + to the east of sites 208, 209.  
Seen sinking in vegetation but resurgence (up through light  
jungle not seen.) Site 3700. (2800)

Clear water resurging from Fuente Lamea and flowing  
into the brown Matizero river. Clear water also bubbling up  
from site 2801.



13<sup>th</sup> Apr. (2996)

Forecast A short visit on the 12<sup>th</sup> by P. P. + CC  
 P. P. + CC, Gordon + Curis + CC  
 VISITED AND EXCAVATED THE ENTRANCE FOR APPROX  
 3<sup>metres</sup>, NEEDS CULMINS ON A DRIVEN DAY  
 ANY MORE DRIVEN DAY.

14 APRIL CURIS C + GORDON P (3703)

DIG AT SWANMORE ADJACENT TO DELISSONAL WITH  
 BRICK ROAD WITH ADJACENT CURIS. DRIVEN  
 DIG WILL NEED CAPPING TO CONTINUE.

ANNEX 445691 4801340

11/04 Llave area H. Long.

(3701)

Small hole, at top of slot in rock face, leads onto 3-4 metre  
 drop. There may be a passable passage at bottom and there is  
 a good echo. Entry will need snapping/capping.

GPS 0454800. 4798219 (Alt. 169m).

12/04 Riano area H. Long.

(3702)

Entrance beneath small rock outcrop at top of gully nearly  
 straight up bank from Fuente la Curia. Flat out crawl  
 lowering to a dig after 2 metres.

GPS 0451387. 4799894.



## Surface prospecting above Trident Series

Mon. 9th April 2012 Participants: Paul 'Footleg' Fretwell, Paul 'Eddy Sharp Pencil' Dold, Bob Toogood

Bob joined us for a walk up to the Mushroom field to look at the area over the top of part of the Trident Series. We GPS located a few known sites, failed to find some known sites and found a few unlogged sites which we recorded. A lovely sunny day, and the only dry day we could expect to see according to the weather forecast.

Walked from Matienzo up to Carcavueso entrance, and then up into Mushroom field. Headed up onto the hillside to the right of the field and bashed about in the gorse to no effect. Ended up back in the field having found nothing. Logged a couple of unreported sinks on the right edge of the field (when looking up hill):

**SITE 3704** = SINK01 30T 452985 4798126 Waypoint 163.3 4/9/2012 11:41:10  
CHOKED SINK, NO DRAUGHT

**SITE 3705** = SINK02 30T 452992 4798124 Waypoint 166.0 4/9/2012 11:42:41  
CHOKED HOLE, NO DRAUGHT

Walked up to site 0603 which we photographed and GPS fixed. Paul Dold tested the draught with a smoke pellet, which we videoed. Smoke only came back out of the open hole, and not out of anywhere else we could see.

**SITE 603** 30T 453081 4798335 Waypoint 187.7 4/9/2012 11:58:24

We then walked up the gully, up the hill. The gully branches and I walked up to site 0252 which was easily located. Took photos of depression and down the vertical small looking hole.

**SITE 252** 30T 453126 4798632 Waypoint 239.9 4/9/2012 13:27:17

Then up the opposite branch of the gully looking for site 0260 but could not find anything around the coordinates in the database. Continued up to dry gully to where we found the stream sinking into a small puddle. Paul Dold dug this with a crowbar, which could be inserted to the hilt both vertically and horizontally into the mud. the water continued to drain away despite all the stirring up of the contents.

**SITE 3706** = SINK03 30T 453450 4798578 Waypoint 279.7 4/9/2012 14:07:39  
ACTIVE STREAM SINK. COBBLE FILLED.

Climbed out of the gully to the South and GPSed a depression with no obvious openings.

DEPRESSION1 30T 453288 4798541 Waypoint 257.3 4/9/2012 14:36:17  
NO OBVIOUS HOLES BUT SIGNIFICANT DEPRESSION.

Next we located, GPSed and photographed site 1623

**SITE 1623 (poss)** 30T 453228 4798546 Waypoint 253.5 4/9/2012 14:49:48  
CRAWL IN 1.5M WIDE WITH COOL AIR COMING OUT.

We found 0870 (10m shaft), but could not find 0871.

**SITE 0870** 30T 453187 4798472 Waypoint 246.2 4/9/2012 14:58:42 870 OR 871.  
8M SHAFT WITH SAPLINGS. DOLD PHOTOGRAPHED.

Descended 0869 and had a quick look around. Needed a handline to get out again. An interesting rift with signs of solution. Probably an old passage remnant.

**SITE 869** RIFT 30T 453170 4798480 Waypoint 239.0 4/9/2012 15:09:23  
BIG RIFT WITH OBVIOUS MATURE TREE AT ONE END.

Back down in the gully we spotted an obvious shakehole full of leaves with rocks underneath that could be dug. Photographed Paul Dold pulling out a few rocks.

**SITE 3707** = DIGGABLE1 30T 453077 4798441 Waypoint 187.5 4/9/2012 15:46:42  
SHAKEHOLE FILLED WITH ROCKS AND LEAVES.

Returned to the bottom of the field and GPSed site 1744 on the way back to the village.

1744 30T 452916 4798004 Waypoint 158.3 4/9/2012 16:12:31  
JUST ABOVE TRACK **THIS IS SITE 3628**, documented 8 days before

Water levels were low, but with rain forecast we took some photos and video of the Carcavueso main sink 0081 in the evening sunshine.



From: Footleg <drfootleg@gmail.com>

To: matienzocaves <matienzocaves@googlegroups.com>

Subject: Re: Easter 2012

Date: Wed, 18 Apr 2012 13:33

Having worked on the data it is clear that the streamway surveyed by Carmen, Chris et al is the original Sima Baz streamway (but that the original was 180 degrees rotated as published). Identical series of bends in the batch 2 of the data from last week. So I've managed to link this with the original and this also confirms the original route into the streamway is the 4m climb Carmen marked on the survey just downstream of the Goldies Way squeeze entry point. Overall then we extended Uzueka by 1245m now I have deduplicated things.

Footleg

### Surface - Hike from Busmartin road over to Renada Valley

Wed. 11th April 2012 Participants: Paul 'Footleg' Fretwell, Paul 'Eddy Sharp Pencil' Dold, Big Steve & Susie plus their friend Sandra

An afternoon walk which inevitably passed by some sites that had not been fully recorded. So took a few GPS fixes and photographs. The first was thought to be site 0830 until we passed the real 0830 just down the path.

**SITE 3708** = NOT 0830 30T 449827 4796505 302.6 4/11/2012 14:24:32

OBVIOUS SMALL DEPRESSION BY PATH. CHOKED HOLE NO AIRFLOW.

**SITE 830** 30T 449842 4796468 303.9 4/11/2012 14:27:27

REAL 830. BOULDERS BUT NO HOLE VISIBLE AND NO DRAUGHT.

Next an unrecorded dig in the meadow.

**SITE 3709** = MEADOW1 30T 449907 4796338 267.4 4/11/2012 14:35:59

HOLE IN SMALL DEPRESSION IN MEADOW COVERED BY PALLATE AND ROCKS. DIG.

**SITE 3622** 30T 449859 4796297 272.1 4/11/2012 14:41:42

A couple of known sites GPS fixes:

**SITE 3000** 30T 449880 4796246 268.4 4/11/2012 14:45:15

CAPPERS SHAFT

**SITE 0429** 30T 449912 4796220 272.3 4/11/2012 14:51:17

OPEN SHAFT

A hole which had been opened up by cutting out the track.

**SITE 3710** = TRACKEDGE1 30T 450494 4796196 287.9 4/11/2012 15:12:22

HOLE ON SIDE OF TRACK. BODY SIZED VOID SEEN INSIDE DIGGABLE HOLE.

Finally a quick look in Campo, which I GPS fixed as it did not appear to have a fix according to my PDA.

**SITE 76** = CAMPO 30T 450634 4796492 240.3 4/11/2012 15:42:33

(Puts the entrance under the pylon. Corrected entrance position is 30T 0450637 4796499. JSC)



(condensed from dive report by Dan Hibberts to CDG Newsletter for potential publication)

Following an easy carry of some 200m from the entrance the divers entered sump 1 which was quickly passed being 1.8m deep and 6m long. A short passage of around 30 meters to sump 2 was met which was found rigged with a spit and a line reel hanging above the sump pool ready to be laid. The divers passed sump 2 to find it to be 10m long and 2.1m deep. At the other side of sump 2 the passage continued for 150m passing three large avens one of which has a large inlet 15m above the floor of the passage. The divers made an uneventful return trip.

The divers returned to survey the passage beyond sump 2 and dive sump 3. After completing the survey, sump 3 was dived and found to be 15m in length and 2.1m deep and a fairly simple dive. Beyond sump 3 a large aven was found almost immediately and around 25m of passage to sump 4. Sump 4 looked possible to bypass by climbing a slope on the right side of the sump where a large ascending unexplored passage can be seen however it was thought more awkward to use this bypass than dive onward. Sump 4 was dived and found to be 5m long and 2m deep before surfacing in a sump pool in a rift which is 5m long to where the next sump is met. While the line reel was being rigged for sump 5 the divers were surprised by a large eel which swam past the diver's feet causing some consternation to MG. Sump 5 was then dived and found to be 10m long and 2m deep surfacing into 50m of large stream passage ending at sump 6. DH attempted to pass sump 6 but there was insufficient line on the reel and gas in his cylinders. The divers made an uneventful return trip.

9th April 2012 Divers: Dan Hibberts, Martyn Grayson  
It was decided by the divers to survey the previous days finds and attempt to dive sump 6. The survey was completed and sump 6 dived by DH. The sump was found to descend steeply down a mud slope with a cloud of silt following the diver. A depth of 5.1m reached which led to the base of a vertical pot. The diver ascended the pot and surfaced in a cross rift which is no more than 5m long before the next sump. MG followed the line through the sump to join DH. Sump 7 was then dived by DH and found to be approximately 6m long and 1.9m deep surfacing at the foot of large aven and another sump. MG followed through the sump and, while the divers where inspecting sump 8, green leaves and twigs were noted floating on the surface which is just below an aven. DH noted there was only 15m of line on the line reel then dived sump 8 and, after reaching the end of the line at a depth 6.6m, the diver was forced to return. The divers made an uneventful return trip. This being the last day, Invisible Cave looks a good prospect for a return visit.



## FROM COLIN HAYWARD'S BLOG..

### WILD MARE CAVE - TORCA LA VACA 20 - 29TH APRIL 2012 COLIN HAYWARD & JIM LISTER

After last years trip over to Spain which resulted in us diving a previously unexplored sump to find a chamber and several possible leads Jim and I felt that it would be a good idea to do a follow up trip. We may be correct, time will tell, the force 7 gale on the ferry crossing and the continuous rain for the two weeks prior to our visit do not bode well.

Our **first day** has been spent recovering from the ferry crossing, buying food and looking around to remember where we went last year. River levels are obviously up, in some places by as much as a couple of meters. The site we want to dive is called Cave of the Wild Mare which is thought to be the resurgence for the Torca la Vaca system which we dived in last time out. We are not sure if it will be passable. The weather forecast does not provide good reading at the moment but these things can change.

Or not; drips through the roof announced the overnight rain but neither that or the previous evenings 1 Euro bottle of wine prevented us from sorting the kit and loading the van at the start of our **second day**. After driving through small rivers on the roads we first tried walking to the cave entrance from above thus avoiding a questionable river crossing. We failed in the dense forest and drove down the hill to try our luck with the wet route. To our surprise the river was passable and we soon found the entrance which looked a little damp. Undeterred we climbed up the small waterfall before the entrance and got into the cave. The description tells of dry crawling and some canals to the sump of the wild eels but with the high water levels the whole passage was fast flowing water. Despite the difficulty of crawling against the current we eventually reached the back end of the cave where the roof neared the water about 15 m before the normal start of the sump. We turned at this point and made a rapid, assisted, exit. Diving in the Sump of the Wild Eels may be possible. Extra line will be needed as the canal passage before the sump is almost up to the roof and it would not take much more water to turn it into a sump proper. We will have to see tomorrow when the weather is going to improve...

Or not; no overnight rain resulted in a good nights sleep until Jim heard a werewolf climbing the stairs. With better weather forecast for our **third day** we went about getting dive kit into the cave and trying to find the Sump of the Wild Eels. Crossing the river was much easier as the water had dropped by about 30 cm. This was also true in the cave and we were able to go beyond the point reached yesterday. We found a convenient place to kit up and Jim headed off into a duck that was almost sumped. Once that had been lined we found the breakdown chamber before the sump proper. Tying onto a rope that had been left in place for when climbing Jim then dived into the sump but ran out of line in a cross rift about 6 m before the end. Whilst Jim collected a full reel from the kitting up spot I had a dive in the murky, mud floored sump. The vis on the return was better than expected indicating that there is a good flow. After I surfaced Jim went through and finished the job, surfacing in the chamber that marks the limit of exploration. The small "uninspiring" sump found in the back left corner of the chamber by the original explorers looked very active and had covered the floor to a depth of about 0.5 m with fast flowing water. Jim then made an exit to where I was waiting at the start of the first sump, pausing on the way to tidy the line and find the original line running down the opposite side of the sump. Time pressure then ended the day, or was it the call of a 2 Euro bottle of wine? The next job will be to dive to the terminal chamber and have a go at the undived sump. No doubt the weather will improve as forecast...

Or maybe; despite no overnight rain the ground was still wet on the start of the **fourth day** but the river levels were down and the water was clearing. We quickly got to the start of the Sump of the Wild Eels and passed it to the terminal chamber. Whilst I secured the dive line to a suitable rock Jim kitted up for the attempt on the undived sump. After he headed off I sat down and waited. After a while I heard Jim shouting. I was later to find out that he had surfaced in a rift and we had proved a vocal connection. After another wait Jim reappeared and I kitted up and followed him in to a second rift. I then dived the line through a bedding where he had excavated some boulders and to the end



12  
of the line. After a quick foray off the end of the line in a canal trench I saw a way on under a low arch. I returned for Jim and he went under the arch and layed out more line in a good sized round tube. After following this around a couple of bends the passage stopped in a blind chamber that was big enough to turn round in. Although there are other options in this area of the cave, which is made up of bedding planes, rifts and breakdown, we both think that the main flow has been lost. On the way out we split up and searched each wall of sump of the wild eels. Jim found a promising looking side passage guarded by a cute looking eel. We exited to hear reports of sunshine so we finished off the bottle of 2 Euro wine and had pizza as comfort food. We now know that the weather is improving...

Or it could be; the **sixth day** started out as another diving trip into Wild Mare, the aim being to look at the side passage that Jim found on the fourth day, the one with the cute eel. With much lower water levels we made good time on the way in, the plan being to dive to the far end of the sump along our line and return the short distance along the original line to where Jim had clipped on the line reel. This would help us protect the viz on that side of the sump and improve our chances. After we had both dived to the far end of the sump I dived back to collect the reel, form a junction and swim off into the promising side passage. Presumably Jim thinks I look scary enough underwater to see off the eels. He may be right because I saw no eels but cannot say if any saw me. Once the junction had been formed a silt screw was used to make a belay next to the junction; the silt layer being more than 40 cm thick at this point. Unfortunately the cave has been playing tricks on us and the promising side passage turned out to be an alcove with more alcoves each side of it. After searching about 10 m of the far end of the passage wall at floor level on the left hand side facing out (downstream) the search was abandoned owing to the clouds of silt that had blown up from the floor. Surfacing back at the end of the line with Jim we discussed the problem. The main flow has clearly been lost and with high water levels limiting viz and at the same time giving us no clue at to where the flow comes from we decided to have a go from the other end – Torca la Vaca. We removed our kit from Wild Mare, had dinner (with no wine) and went out again to rig the ropes in Torca. Our plan now is to get back into Eely Mud Eye Chamber and look at the sump we found on our last visit but didn't have time to dive. Having done that we are now enjoying some glasses of 1 euro wine and some bacon flavoured crisps – we know how to live it up we do.

**Day 7.** After our failure to find the link between Cave of the Wild Mare and Torca la Vaca using the easy way in through Wild Mare we have decided to go in the back way through the Torca. This will get us to the downstream sump we didn't have time to dive last time out but it is a lot harder work. Yesterday evening we went in and rigged the cave. Today we moved two sets of dive kit in and down to the kitting up area. It was a leisurely trip taking just over five hours and included several picture and video breaks. Once we had finished moving the kit Jim placed two bolts from which we hung ladders. The first is reached by traversing along from the kitting up area and should allow us to get into the water without climbing down a sharp rift and damaging our equipment. The second is positioned in the upstream end of the Buttermere canal section and will be used to get over a closing in the passage cross section and down the other side to the upstream sump that we think feeds the canal and may connect with sumps further into the cave. We both feel that we have just about earned our 1 euro wine tonight.

Our second day in Torca la Vaca (**day 8**) started well with a simple light weight trip in to Buttermere where we kitted up at the base of the pitch and climbed the ladder down into the canal. We floated downstream to find the dive line from last year and swam through to Eely Mud Eye chamber. The water level was slightly up on so the whole place looked a little different. We looked around for a few minutes trying to find a way of crossing the chamber without getting out of the water. We failed but the search will go on during future visits; why would we want to cave when there is the chance of a gently swim? At the far side of the chamber Jim tied on to a boulder and went to explore the passage that we thought was a sump. Swimming for about 5 m in a very wide bedding Jim surfaced in a very muddy rift closing down at one end and ending in a boulder choke at the other with an arch straight ahead. Both of us de-kitted to investigate a passage going off from the



small area beyond the arch. It turned out to be a very muddy inlet which was pushed upstream through a duck to crawling sized passage going off. This was left as it was clearly off route. Back in the main rift we climbed the boulder choke to find a link to another rift containing breakdown and several possible ways on. Each was looked at and the last one took us up through more stacked boulders to a larger rift several meters high with water at the bottom. The rift was divided by a flake which we walked along the top of and then dropped down it's left side onto a massive wedged boulder (that proved to be the key to route finding in the interlinking rifts) held in place by a few cobbles located at all the important places. Overlooking the key boulder is a lovely round tube formed on a rift fault. Climbing down below the boulder we regained the water and investigated various ways on. The first went blind but the second took us around a corner and the unexpected sight of the dive line at the far end of the Sump of the Wild Eels. We had made the connection! Jubilation and a handshake followed. On the way back we tried several different routes through our new discovery but always end up back at the key boulder. We think there may be an underwater route through but then maybe we are being lazy and optimistic. After a timely exit we are now back at base planning tomorrow's trip. Clearly we need to survey the find to try and fix the two caves together and there is the possibility of the first through trip. The 1 Euro wine is flowing well tonight and we have decide to call our find the AGM Bypass because of a meeting we have missed whilst out here.

**Day 9** Today's plan was complex. We went in the dry route with refilled cylinders, survey kit and a ladder. Our aim being to leave the SRT kits on the rope at the base of the Torca la Vaca pitch, have a look at the upstream sump in Buttermere and then go downstream into Eely Mud Eye chamber where we would start surveying out towards the connection with Wild Mare. How we had to move bits of equipment about in Buttermere to achieve this was enough to give us both headaches. All went well to start off with and Jim got into the water on the other side of the mud back in upstream Buttermere. He followed a large sumped passage for about 15 m going off to the left looking upstream. This surfaced in a rift. On the right hand side of the rift was a cascade over boulders. Above this was a large cobble floored stream passage ending in a clear blue sump turning off to the right. Jim then returned and we headed off downstream into Eely Mud Eye where we started surveying (hoping that we would make a better job than we did last time) we also managed to find a quick route through the chamber without getting out of the water. From Eely we dived through to the start of AGM Bypass and continued our survey work in the rift at the start of the climb up into the higher level of the boulder collapse area. Route finding and time pressure then caught up with us and we abandoned surveying to find the simplest route through the boulders for our dive kit. After moving a boulder or two we created a breakthrough window that allowed us to lower gear back down to water level and avoid an exposed climb down with kit. From there we were able to take a direct (underwater route) to the terminal chamber of Wild Mare. The dive out through Sump of the Wild Eels was very pleasant if a little gloomy as we were travelling in the silt cloud that we had created by our days activities. Near the start of the sump a side passage was spotted – it gave itself away by the flow of clear water. Upon surfacing Jim had a look for interesting undercuts but returned rapidly to report that "we are not alone", apparently the eel he had met was far less cute and considerably larger than the previous one. We then completed the through trip from Torca la Vaca to Cave of the Wild Mare. Later on we popped in to see Juan and hand over our survey data and discuss the upstream sump in Buttermere that Jim had dived. In all likelihood the passage Jim surfaced in was the Whitworth series. This is very welcome to us because the main aim of finding the link between Wild Mare and Torca la Vaca is to provide an easy route in to the sumps further into Torca la Vaca. A long days caving is now being capped off with 1 Euro wine – which tastes fabulous!

**Day 10** After our complex through trip/exploration trip/survey trip yesterday we had equipment to move out of Cave of the Wild Mare and more surveying to do. We went in through Wild Mare. The weather has returned to continuous rain so we were surprised to find that the waterfall at the mouth of the cave had completely dried up and that water levels in the cave were down on yesterday. We kitted up and dived through Sump of the Wild Eels to the AGM Bypass where I left



my dive kit and helped Jim move his through to the start of the dive to Eely Mud Eye Chamber. Jim dived off upstream to Buttermere where he collected the two ladders we had used the previous day to get over the mud bridge and back into the water for the dive through the Whitworth series. A cord was left in place so that a ladder or rope could be pulled up from the water in future. I stayed behind and continued the survey work through to the breakthrough window. Whilst doing this I noted that the number of drips coming from the roof was increasing and in some places the drips were turning into waterfalls. With impeccable timing Jim returned with the ladders just as I had completed the survey work that I could do on my own. Jim commented that the water levels were rising and the cave was flooding. We then completed the surveying, weighted the tackle bags for neutral buoyancy and headed out. Sump of the Wild Eels was heavily silted but didn't have much flow. After we surfaced we saw an inlet on the left (facing out) just before the boulder pile that was flowing very heavily. Clear water from the inlet was mixing with the silty water from the sump and it looked like half or more of the water in Wild Mare was being fed from that inlet. Crawling out with extra gear was fun in the high water and we were both glad to reach the entrance, even though it was still raining. Water levels in the river, which had been the lowest we had seen them all holiday, were up and the waterfall was flowing across it's full width.

All that is left for tomorrow is to go into Torca la Vaca in dry gear to de-rig the ropes and collect our SRT kits from the bottom. That should be a short trip giving us the rest of the day to wash everything and sort out the last details of the survey with Juan.

**Day 11** On this trip Jim has seen quite a few eels, Jim even saw several more eels today. He has encountered a mixture of sizes and levels of cuteness. I have so far not seen a single eel, not one, maybe I should stop peeing in my wetsuit, or maybe not!

**From:** Alasdair Neill <alasdairneill@yahoo.co.uk>

**To:** matienzocaves <matienzocaves@googlegroups.com>

**Subject:** Wild Mare

**Date:** Mon, 30 Apr 2012 10:30

Was the flooding inlet the one which ends very close to the downstream end of Pena Encaramada? There's also an inlet nearer the sump, by "eel seen" on the survey. Perhaps some water comes from a sink on the other side of the road junction near PE entrance. One would expect PE to have a fair catchment, there are a number of sinks off sandstone beds along the hillside to the south which probably feed into it.

7/5/12 Biggo <sup>(114)</sup> surface survey. Fran + Penny.  
Photos of depression. Tyres in the depression and  
lots of dust on the ledge faces.  
<sup>(3667)</sup> Sink in the valley above the depression which must  
feed the resurgence cave in the depression. <sup>(3667)</sup>  
Photos @ site 2708. Way to bigger cave to left  
of entrance; water resurges (comes from <sup>(3667)</sup> ~~3667~~) Cave has a  
window up to higher entrance - not investigated.  
3667 is about 10m south + 7m higher than 114 entrance.  
After 3354 quit ref



From: Alasdair Neill <alasdairneill@yahoo.co.uk>

To: juancorin <juancorin@matienzo.org.uk>

Subject: espada

Date: Fri, 4 May 2012 10:17

Attachments: Espada.cdr (607K)

ESPADA

Survey enclosed.

Certainly not complete, apart from adding & checking detail there's still one more entrance (can't remember the number) apparently coming into the river passage somewhere. Also the draughting inlet heading north in the Upstream Series, & the major inlet coming in from the south in the western part of the cave both could have considerable potential if they could be pushed further.

### 15<sup>th</sup> May 2012

Juan around caves in Llueva. Photo of **Road Works Pot (site 3334)**, where police crime scene tape has been wrapped around the rebar and chain.

Then to the cave recently discovered by HL, **site 3691**. Approached the hole from the usual track to Biggo entrance, ie headed south for about 50m but found it took 20mins to bash through the jungle. Some photos and video in the cave; crawl on west wide might have had a faint draught.

Walked south uphill along a faint track to find a set of small resurgences at 0454811 4798294 (**site 3711**). Then back down to the road and up to repeat the Biggo trail into the depression.

Video of depression. Surveyed positions of sites **3667** and **3354**. Some photos. There appears to be an old fire in the entrance passage of **114 Biggo** (11m beyond the second wall). This is currently covered by a large stone but there is plenty of old charred wood under and around the position. Photo and video of this.

—Original Message—

From: john southworth <[direct.station.limited@hotmail.co.uk](mailto:direct.station.limited@hotmail.co.uk)>

To: juan corin <[juancorin@matienzo.org.uk](mailto:juancorin@matienzo.org.uk)>

Sent: Wed, 16 May 2012 12:49

Subject: cave 3629

Hi Juan.

Thanks for the camera info , think I will go for the Olympus TG-310.

3629 was extended by Gordon & Dave M , boulder removed to 3m of tight rift to 2m very narrow vertical rift with a sandy floor at the base.

Dave says its not worth any further digging , did not draught on good draughting day. Sorry for the late report . 3669 is this the cave what Jenny & James found ??? ,

looks like it might be just out of area by a few metres going of the gps position.

Cheers John.

From: Juan Corrin <[uzueka@aol.com](mailto:uzueka@aol.com)>

To: [direct.station.limited@hotmail.co.uk](mailto:direct.station.limited@hotmail.co.uk)

Subject: Re: cave 3629

Date: Wed, 16 May 2012 13:03

Thanks for the info. 3669 is out-of-area - an interesting hole to be considered if we extend the area.

Cheers

Juan



## **MATIENZO CAVES PROJECT**