

LOGBOOK

Year: 2011

Season: summer

Logbook pages scanned to jpg then combined into a pdf file using <http://smallpdf.com/>

Juan Corrin, January 2015

SUMMER 2011

1

From: Terry Whitaker <t.whitaker1@btinternet.com>
 To: Juan Corrin <Uzueka@aol.com>
 Subject: South Vega Hydrology
 Date: Thu, 23 Jun 2011 17:54
 Attachments: South_Vega_Hydrology.bmp (622K)

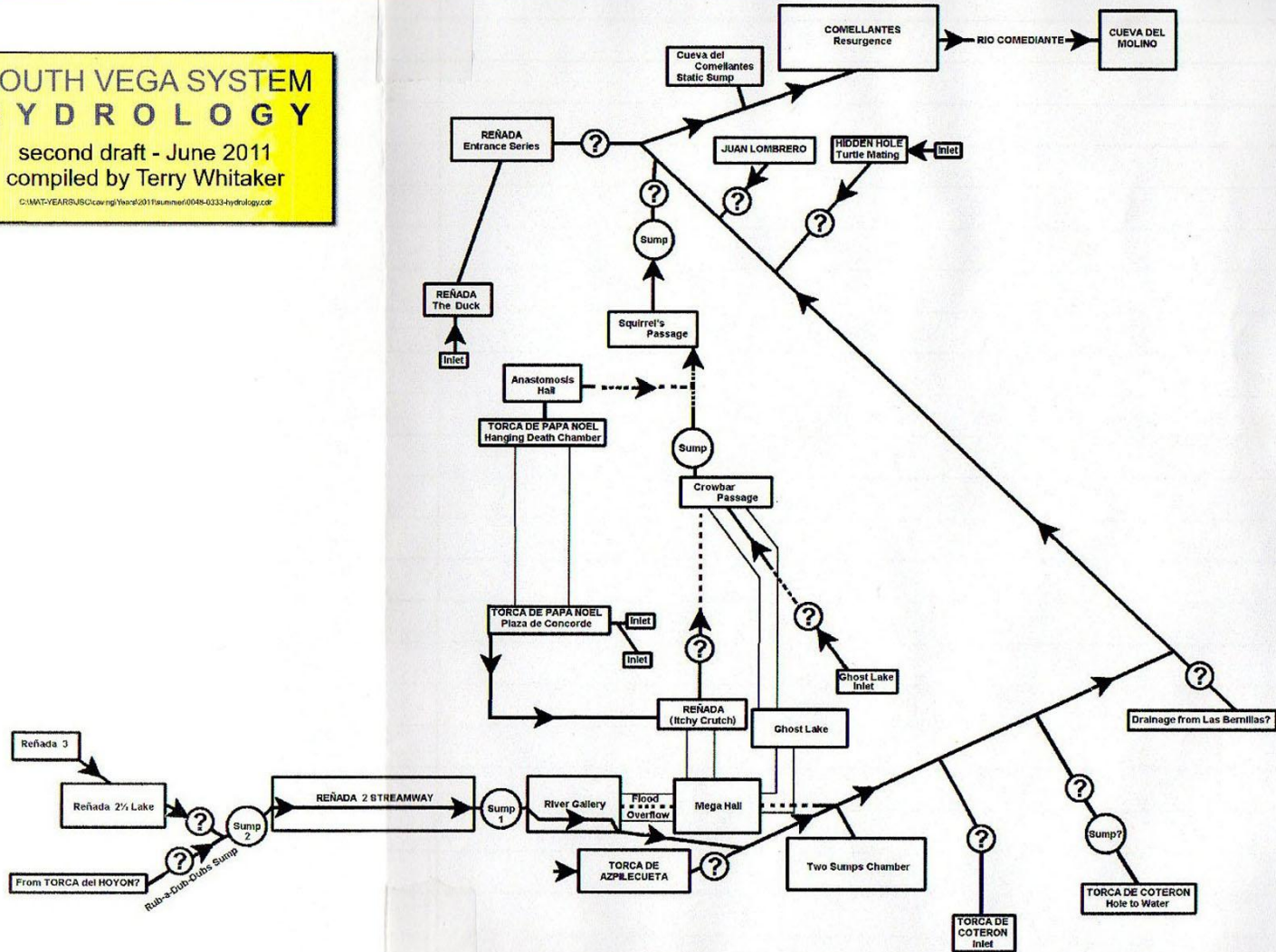
Dear Juan
 Here is an updated South Vega Hydrology diagramme.
 If you want to put it into the public domain do it.
 Regards
 T

48 333

SOUTH VEGA SYSTEM HYDROLOGY

second draft - June 2011
 compiled by Terry Whitaker

C:\MAT-VEARS\USC\cwrng\Year0\2011\summer\0048-0333-hydrology.cdr



From: Peter Smith <smith_peter2004@yahoo.es>

To: Juan Corrin <uzueka@aol.com>

Subject: Torno

Date: Tue, 28 Jun 2011 19:46

Hi Juan,

Today I was talking to Antonio the guy who has this blog

<http://tierrasinteriores.blogspot.com/>

(with a trip in Cueva Riaño)

He said that last week they were in Torno in the Eldon Series, and somewhere they climbed up and got into a passage with no footprints. I said I knew nothing about that part of the cave because I haven't been in it and never seen the survey. But I suppose he'd go back with us to show us where it is.

Pete

From: David Gledhill <dave.gledhill@hotmail.co.uk>

To: uzueka <uzueka@aol.com>; martin.barnicott <martin.barnicott@gmail.com>; smith_peter2004 <smith_peter2004@yahoo.es>

Subject: RE: Torno

Date: Fri, 1 Jul 2011 16:57

Hi All,

Just tried using google translate and got this result:

"Hair normally has a consuming enthusiasm but sometimes fixed a single objective and abstract without seeing the riches that fall from the heavens."

His prose style is very reminiscent to that of many of the Eldon.

Apart from that..

At a guess, it sounds rather like the point we originally reached when we first made the breakthrough along the Canyon passage - ending close to Riano.

Canyon passage ends in a largish area with a load of fallen blocks. To the right is chambers of very loose horribleness, but to the left it goes downwards into a small streamway which Barny remarked at the time was very reminiscent of Riano. At the end of the stream, a low squeeze under a wall comes into a chamber with a waterfall entering high up on right (later climbed by Barny - oxbows back to streamway entering the chamber). There were a few obvious leads, but they all closed down. Two ways remained to be pushed. The first was through a long choke, which we suspect is going straight to Riano - but far from easy. The other was a climb up to the left of the waterfall (chimney up approx 5m?). Not attempted at the time - up looked possibly 'doable' without kit, but return would not have been easy without rope. I suspect they may have gone up this? If not I've no idea.

Other notable phrase from google translate of the blog:

"We returned to Chamber lathe followed by three clueless."

Reminds me of those lads Juan got Barny and me to take into Tomo a couple of years ago.

cheers

Grave D

14/7/11

Pete, Joan + Penny to Rioño to meet a woman whose calf had fallen down a hole. Followed her vehicle to the area of site 400 between Rioño + La Gatuna and were taken to site 1365 where the beast was obviously dead at the bottom of the vertical 6m drop.

Left Matienzo @ 2-45pm and we're back at 4-15. ~~Met~~ ~~Some~~ Two of Torben's + Louise's friends were at the bar on their way through to Bilbao.

Better grid ref. for 1365 is 30T 0450863 4799273 1352
Ollies in the area are likely to be out.

15/7/11 Joan + Penny walked up from house to track behind Emboscados. Followed track to end then found site 1681/1682 down in the woods below large barn. Supposed to be a dig at base of cliffs - they may be, but it wasn't draughting. Site 1682 may be half way up the scar but should probably have a shoulder to help reach it or a handline from the top. Photo taken
Walked back via the Mushroom Field.

19/7/11 Brendan Sloan, Jen S, Louise O'Hara, Liz Harding + Tim Webber.

(0026)

~~1673~~

Tiva - about 80m into the entrance - just above water rift but too flooded to go further.

(1673)

Chisel Cave - went to the dig and pushed another 2 Liz lengths - about 11ft. continuing muddiness. Could see a further couple of metres past passage which needs to be ~~further~~ widened to continue. chisel required!

20/7/11 Pena Encaramada (3380)

The SUSS team took a trip down Encaramada to have a look at some leads. We discovered the entrance pitch had been bolted with Petzl Permonents on the left of the pitchhead giving a nice long rope in situ, overrigged with a new rope by us.

~ 5m down the pitch Brendan retired on oxbow off, so swung in for a look. ~ 35m of passage, including a pretty gully and a too tight rift down that looks to continue if widened. Most obvious passage leads to a web choke.

From bottom of pitch - looked at upper levels with a few interesting leads - hole in floor and even climb above 2m drop look worth

Looked at ladder pitch into stream - 2 bolts placed for lifeline and ladders left in. Streamway pretty low so pushed on upstream. Traverse over the top of the ladder climb looks worth doing, ~~and~~ as does climb into aven after first couple of benches in streamway heading upstream. The girls followed the continuing rift below the climb to the high level to find it linked back to the sump series, but bypassing the 'sump'.

Tim + Brendan had a look at a few sandy digs, put a rope down a rift with the sound of running water below (no time to drop it), and then climbed into the high flogover passage and surged 20m over a pit, to a sandy dig.

On the way out, surged 50m in the series at the bottom of the entrance pitch

22/7/11 South Vega - SVSS team

Plan was to go up to look at some sites above Peluca
On the way we managed to find some new holes

- 3540 - A hole beside our route up, requiring a boulder to be hauled out before it could be entered. Ladder pitch for 7m to a floor, with a short incline sid going off for 3m until it was too tight. No draft, not worth digging

GPS 307 0451430 4794429 el 568

1624

~~3541~~ - An obvious hole with a tree growing out of it. Descended on 2 ladders + creative use of wire strap and etrier to reach a floor 18m below. Looked promising from above, but the ongoing passage degenerates to a too-tight slot 2m lower. Quite pretty with a large stal boss. No draft

SURVEYED

GPS 307 0451411 4794419 el 580

3542 - A rift with a 5m drop to a choked floor. No obvious draft

GPS 307 0451255 4794270 el 639

2593 '15 mins with crowbar and rope'. After 30mins, a crowbar, a rope, a 3:1 pulley system and 5 people, we have extended the hole at the bottom which does draft, but the boulder blocking the way is probably 2 tonnes in weight, and would probably need capping to allow removal. There looks to be a wider area below, but it may be the draft rises through boulder fill

2591 - Descended first 7m ladder pitch to choked floor with no draught after moving a few rocks out of it. Adjoining 5m ladder pitch led to stony floor with no draughts. Not worth a re-visit.

2590 White Chamber cave

The hole was forced to a small (2m) continuation which promptly closes down. No draft felt. No likely further prospects

1186 - Attempted to find this cave. Description not particularly helpful. Angry cows prevented a proper look, but one team member may have fallen into it!

23/7/11 Tiva (0026) SUSS Team.

Once past the climb down into the main streamway, avoiding the apparently headless sheep carcass, the SUSS team split into two groups. The Liz, Ter and Louise "super-team" went to fill in the gap on the survey connecting the last year's survey of Rosado. First we stumbled across (literally) the traverse of Doom, and surveyed as much as we felt safe doing without a rope, before moving on to survey passage which seemed to fit onto the map from last year. The match was not quite as good as expected, but as of yet we have not managed to return to Rosado. Whilst surveying a rift with an apparent "way on" up on the left, Brendan (who had joined us to give an opinion on rigging) climbed down the rift and in to what we now believe to be the 1970s Tinto series. This needs verification, but the passage has been re-surveyed. Prior to rejoining the team down Tinto, Brandon and Tim

had gone off to find Blanco. The route up was easily found, and surmounted to the cross passage at the end. We had a quick look at the climb, but after nearly falling off it and deciding it looked rather worse and scrappy we retreated. We had a quick look at some of the other passages, which seemed to end in the Tiva - Risco boulder choke.

24/7/11

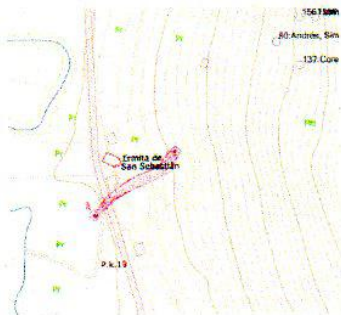
Tiva (026) Brandon, Tim, Jen, Liz, Louise, Mandy, Jeff
A return to the ongoing passage. Brandon, Mandy and Tim batted across the Traverse of Doom, to find some interesting passage on the far side, one bit continuing towards Blanco, the other towards Risco (culminating in a choke). The route toward ended in a big rift, with high passage on the other side (subsequently reached from Blanco). We left the traverse rigged for the others to surmount. Then we had a look down the rift just before the turn into Rosado, which led to 2 drops into the terminal chamber above the stream, and little else. Finally we attacked the climb to Blanco with the ~~secret~~ secret weapons of a Brandon ladder and a Mandy. This was successful, although the climb looses more rock with each ascent. The rock at the top was solid enough for a bolt, followed by a slippery climb up moonmirth into the highest level passage. We screeged along to the choke at the end, where we could hear falling water. Via a tight climb up (Brandon) and a syneeze at low level (Mandy) we gained a ~15 x 6 m chamber with water running in from the roof. Unfortunately the lower end looks like

it is choked with mud, but there are leads to look at in the chamber and further bulk along the passage which we didn't have time to look at.

The Liz, Ter and Louise "super-team" was strengthened by the addition of a Jeff, who was willing to go up/down/through bits the girls weren't willing to do. Liz + Ter did, however, get stuck on multiple occasions perusing squeezes that weren't wise to pursue. We finished surveying Old Tinto(?) and crossed the Traverse of Doom to survey the passages to Blanco (didn't quite reach due to more Traversing of ? Doom) and to the streamway. Both were probably re-surveys of previously found passage.

Batches 026-13 + 026-14

Dowsing day 22/7/2011
John Wilcock with Juan

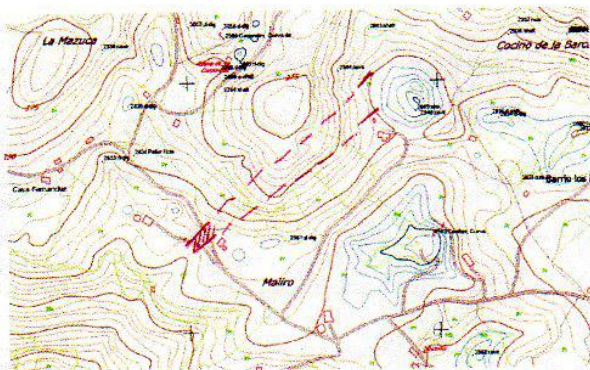
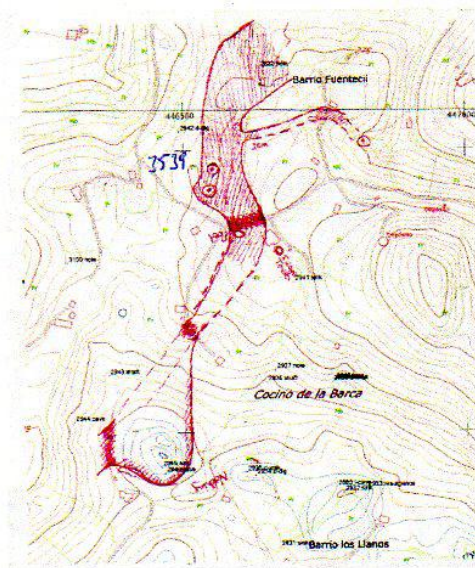


Started off at a wet weather resurgence noted by Juan the day before (site 3541) just south of El Camino, west of the main road. John dowsed this up behind the church until the dense jungle. It's heading towards Cueva Coreano (site 137). A small hole (site 3538), not draughting, was also found on the dowsing line.

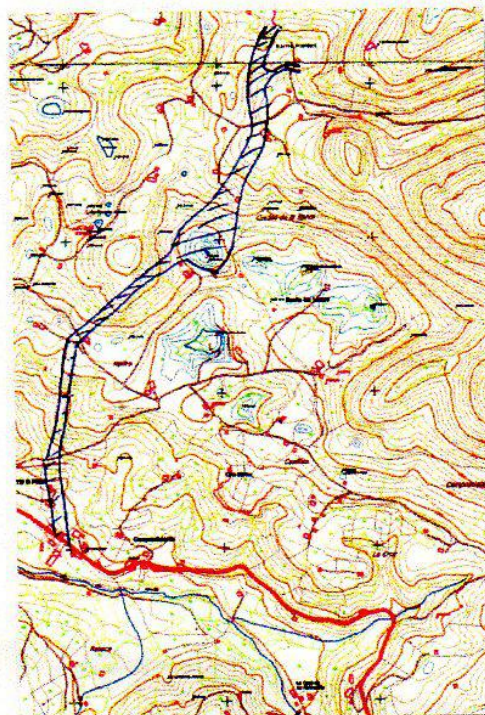
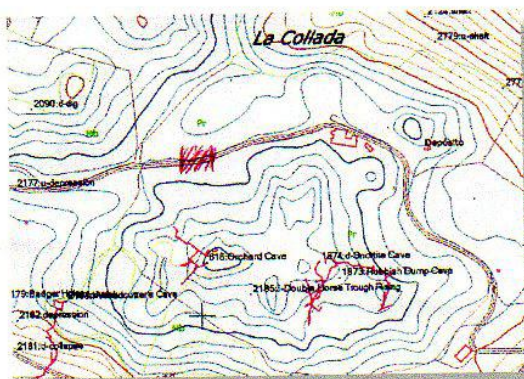
Then off to Fuente Aguanaz to dowsing the upstream continuation. This took about 4 hours, picking up strong reactions at various points on roads, tracks and open fields. Solid lines on the maps

show a detected edge to running water. A dotted line is a supposed edge. *Site 3539 - drifly sink with low high seas found over reaction area.*
The upstream line of Fuente Aguanaz is shown at the top edge.

These 2 maps overlap at the depression. The reaction was then traced on the road down to the main La Cavada - Alisad road as shown on the Google Earth kml file and the overall map below.



Then a quick visit to Cobadal and a possible northern route for water from Orchard Cave and Snottite. This is just down the track from the farm at the changing spot for Snottite, directly north of Orchard Cave.



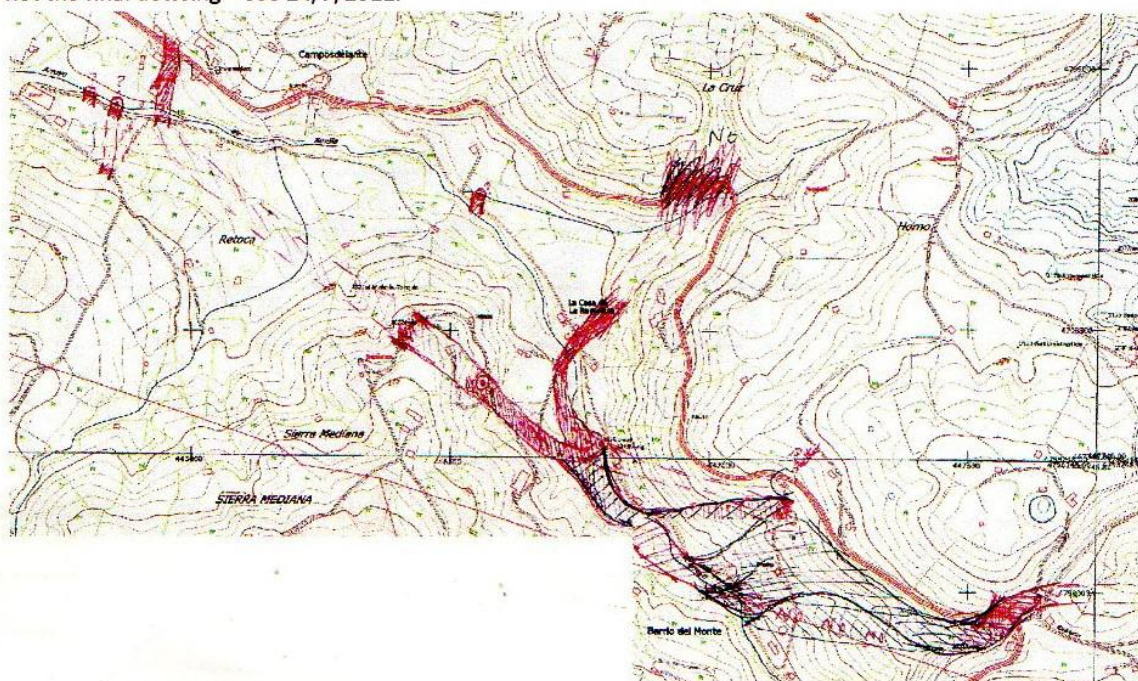
John Wilcock with Juan and Penny

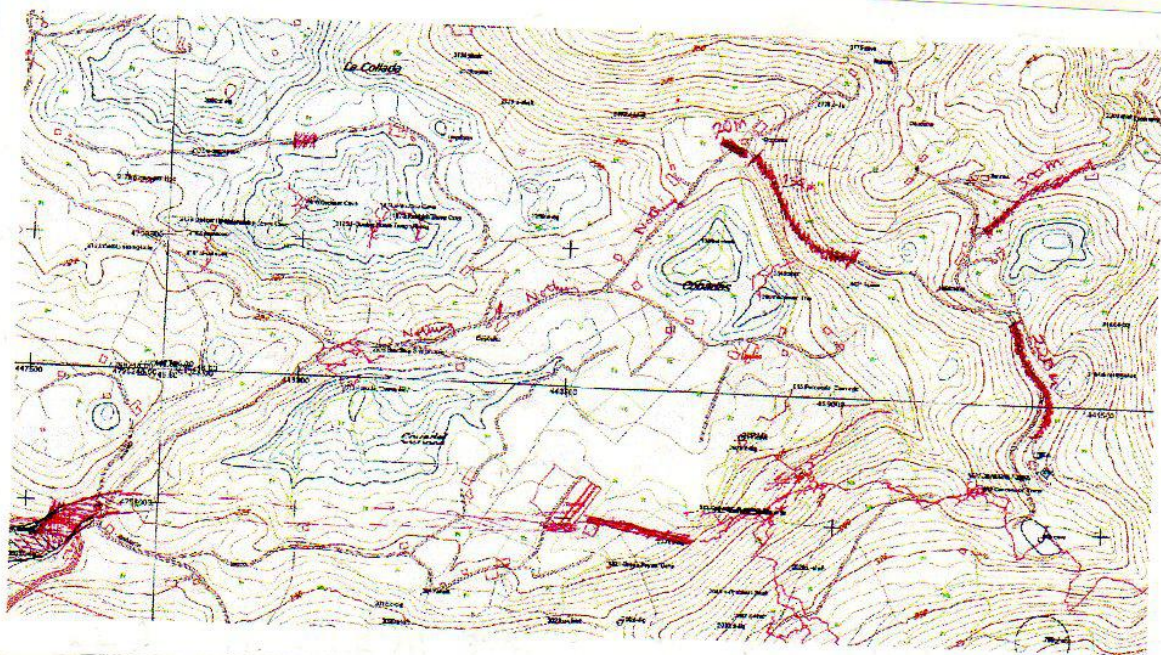
the side of the road), the Duck Sink (with a proposed branch coming in from the north) then heading east under the steep road down from the bus shelter and continuing under the main road and the 2 north-heading roads at the edge of the Cobadal depression. A reaction was also detected near the poly tunnels which headed straight for site 2091, a dig southwest of the sumidero entrance.

Day 2 finished with John and Penny walking the northern road from Bus Stop Shelter Hole (site 2908 – which Juan couldn't find). No reaction was detected until the road started to turn and climb out of the depression at a farm. Here, a 20m wide reaction could be from The Sewer. Just above, a 250m wide reaction, along with 2 other wide reactions later found higher up, could be associated with a possible northern route to Aguanaz for the Sumidero de Cobadal water deep underground. A composite of the sheets used are shown below. This is not the final dowsing – see 24/7/2011.

Continued searching for the "Aguanaz-from Alisas" connection mentioned on the display boards at the resurgence. Started at the sinks / shafts in the road bend just north of the Puerto (sites 2037, 2035, 2036 and 1969). John could find no reaction dowsing up and down the road.

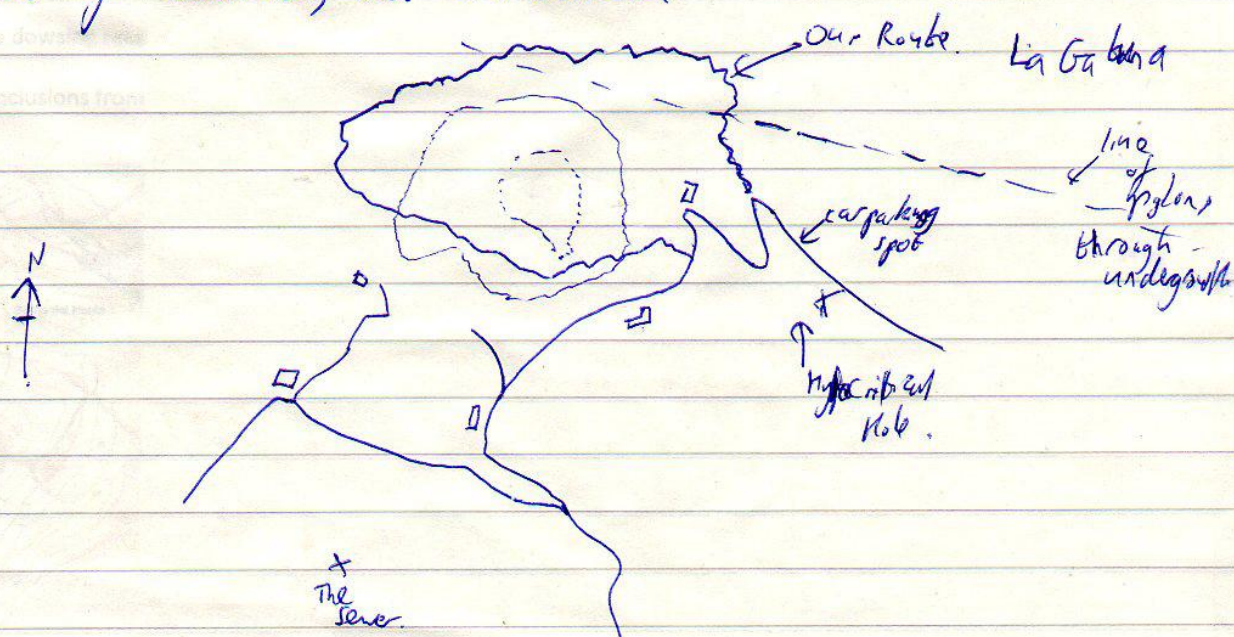
Drove down to the area of the Duck Sink, site 1976 where John immediately got reactions in a number of places, eventually "tying in" with the previous days southern upstream limit for Aguanaz, ie crossing the main road, passing under Torca de Michelin (3021) and new site 3543 (a choked sink against a 4m high scar by





23/07/11: Jenny Corrin, James Carble.

Walked the hillside from Hypocentral Hole around the side of the hill shown at the far top right of the map above (on this page). Found a lot of brambles, but no caves.

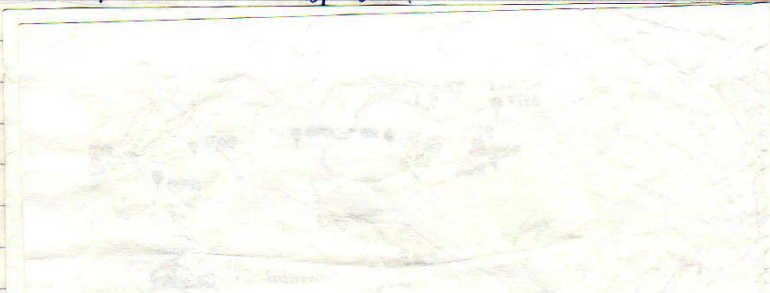


CORADAL.

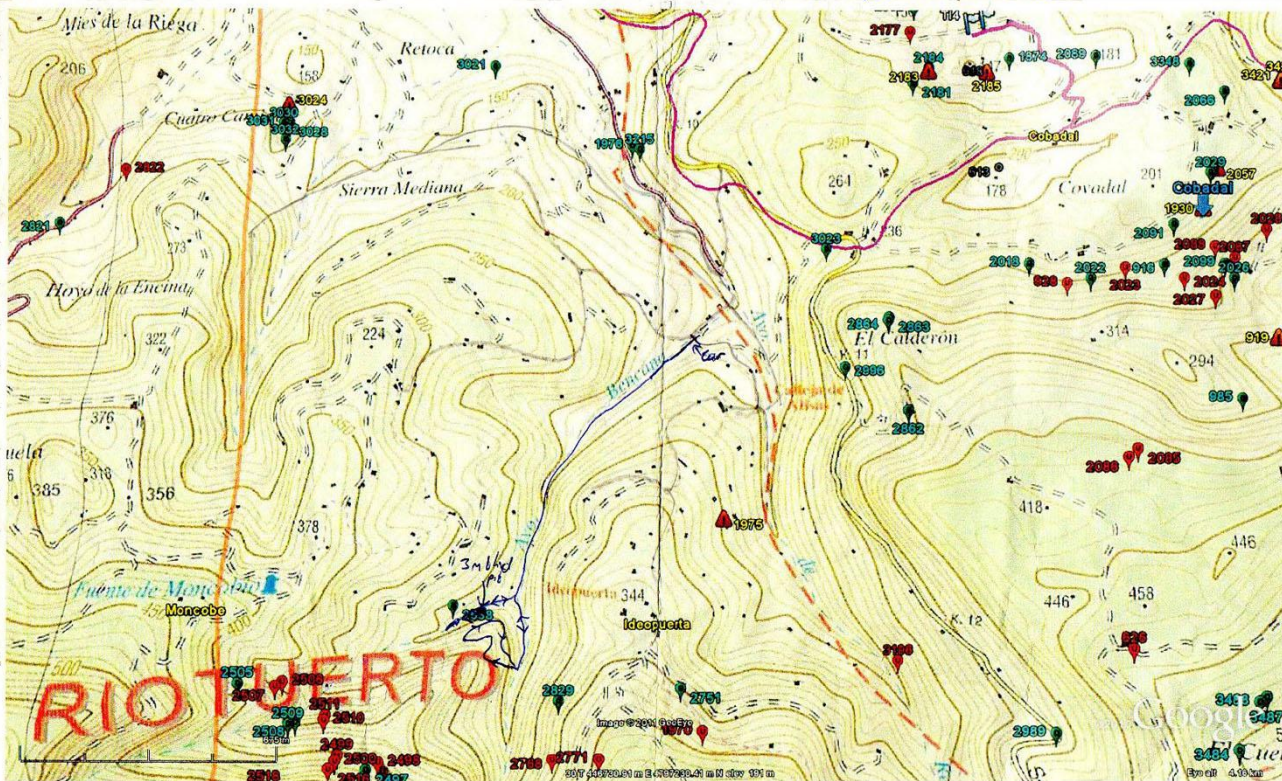
24/6/11: Jerry Corn, James Carmle

Had a good scanner of the area below Cobadal. Walked up a dry streambed to the point where it diverged into two. The right-hand branch led to a large limestone ~~feature~~ ~~feature~~ feature with a dry waterfall. There was a 3m deep blind pit here ~~run~~ up on the left bank about 5m from the bottom of the streambed.

The other branch was less interesting so we decided to climb the hill between the two tributaries ~~but~~ which had limestone blocks and stakeholes on top, but no cave unfortunately. Route walked shown on map below. SOT 446143 4796469 (WGS) (3544)



* Limestone outcrop is just below 2538 (446064 4796471 WFS)



3

Dowsing day 24/7/2011
John Wilcock with Juan and Ian

Aim: To trace the La Gatuna drainage and put more detail on part of the Cobadal.

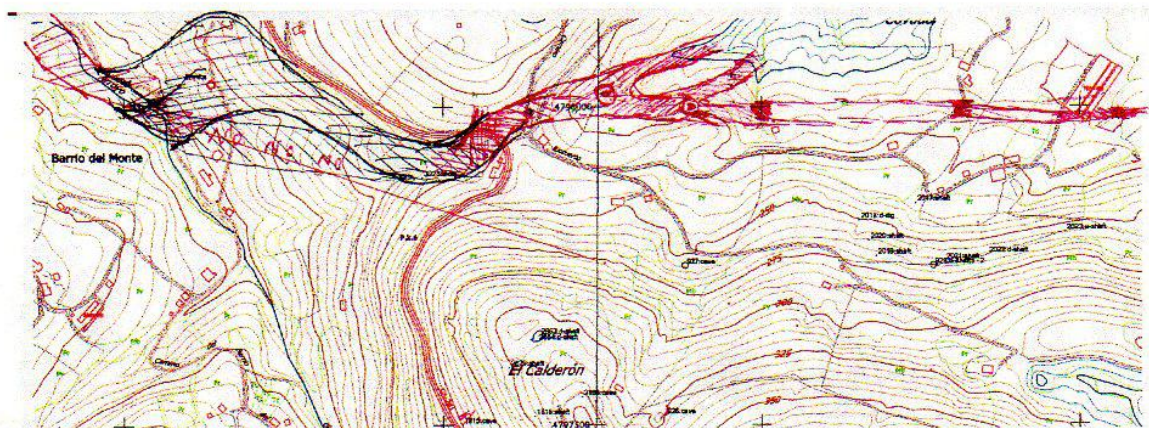
Started behind the upstream end of site 979, Fuente de Culebro. John picked up reactions that suggests the cave soon meets an inlet. Further dowsing took us south into the jungle areas, eventually reaching the depression with the entrance to Cueva de Collada. Note that the farmers at the northern end are friendly but the farmer whose land site 153 (Tree Root Cave) is on is most unfriendly and, despite Ian's negotiations, insisted we left the positive reaction to the west of his farm. All together, the dowsing reactions seem to indicate a system with inlets under the jungle-filled depressions in La Gatuna, with Cueva La Collada as possibly the "top sink".

Drove round and up to the farm above the end of the Cow Pot inlet. A positive reaction was found over the end of the inlet trending in the correct direction. This "indicates" the survey is reasonably accurate but doesn't indicate a Collada Cow Pot connection. The farmer here was very interested and jolly having just come back from his lunchtime blancos. (Map on following page).

Returned to Cobadal to dowse along the south side and fill in some details. First drove to the farm yard due west of the poly tunnels. John picked up a positive reaction on the track down. Intending to follow this to the west we entered a field with cattle only to have the bull saunter belligerently towards us so a quick exit was made under the electric fence onto the road (see video). A positive reaction was obtained below the cabaña to the west then further positive reactions which indicated 2 passages coming in from the main depression with Cueva Torcida (613). A good sized stream was running down the wooded gulley next to the cabaña but the sink was not seen (due to jungle phobia and fear of the bull).

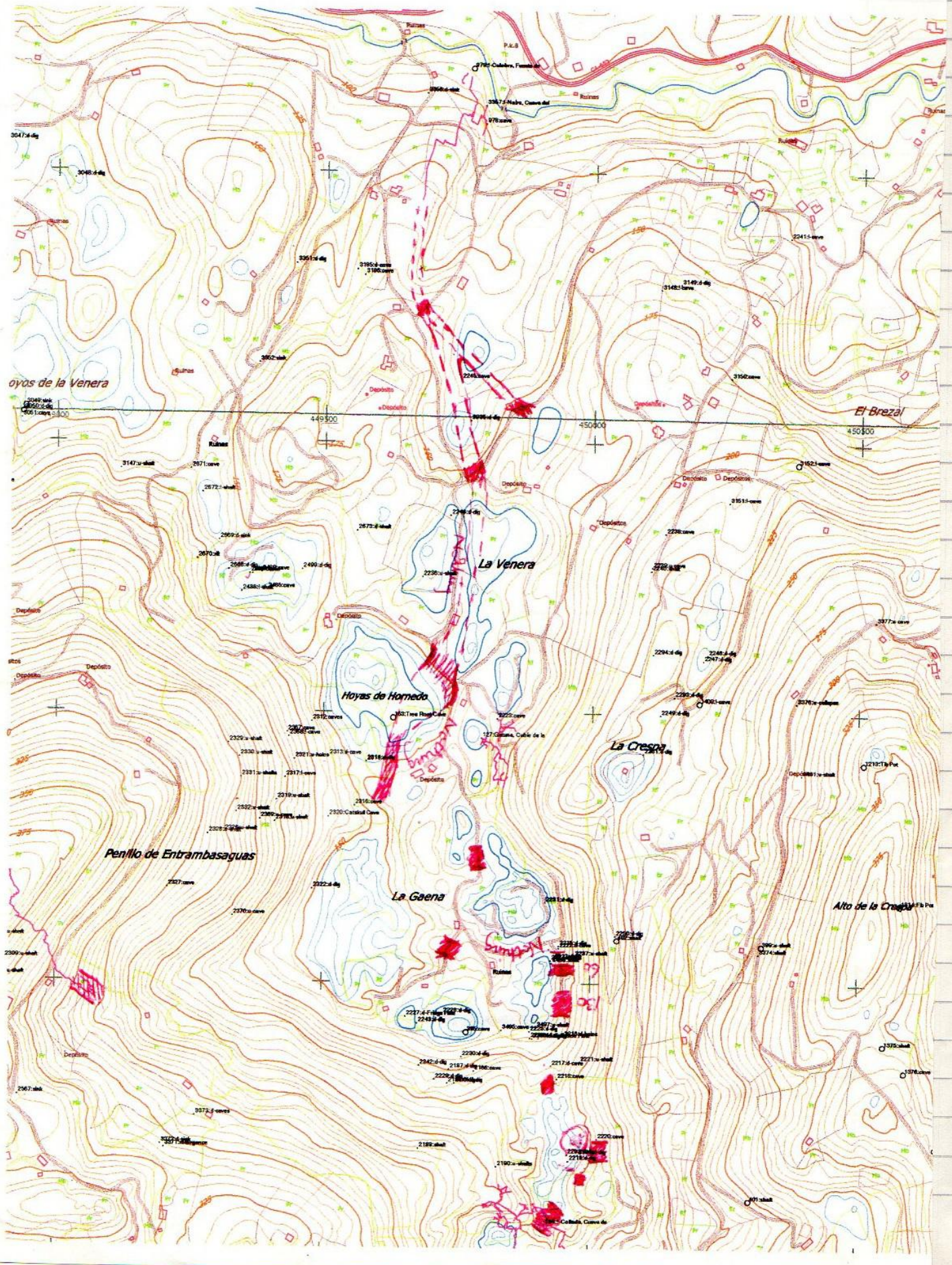
The dowsing reactions will eventually form a separate layer on the AutoCad map.

Conclusions from these 3 days: ???????



0979 - dowsing - 2011-014.jpg

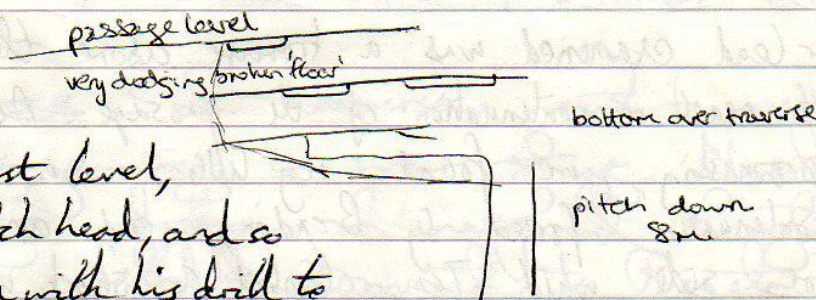
DAY 3



25/7/11 3380 - Encarnada.

SUSS Team - Brendan S, Sen S, Liz, Louise, Tim W, Richard S,
+ James Carlisle.

Liz, Sen and Louise set off with the intention of surveying the entrance series and finishing the survey at high level past the 2m drop past a stal. squeeze, since the previous survey finished there. A bolt and rope had been fixed for a 3m deep hole in the passage floor. Having descended into a lower level passage, a further passage was found at the level below again.



On the very lowest level, Sen found a pitch head, and so Tim was called in with his drill to investigate. Sen, Liz + Louise surveyed the passage at a rate of 5m per hour, since the passage was tight and prone to collapsing. A total of 15m was surveyed, connecting the hole in the passage to the rest of the survey (which the men had kindly taken over).

BRENDAN, TIM, JAMES & RICHARD CONTINUED THE EXISTING SURVEY FROM THE LAST KNOWN POINT, JUST ABOVE THE 2m CLIMB. AN INTERESTING 8m PITCH WAS FOUND ON THE RIGHT OF THE MAIN PASSAGE - BEYOND A SHORT CRAWL. THIS WAS DROPPED APPROX 6m TO THE 'FLOOR', THEN A FURTHER SQUEEZE ALLOWED US TO GET 2m LOWER - WHERE THE CAVE BECAME TOO SMALL TO PROGRESS. VOICES FROM THE OTHER GROUP COULD BE HEARD AT THIS LOCATION.

FURTHER ALONG THE MAIN PASSAGE, ANOTHER TIGHT SANDY CRAWL LEADS LEFT. THIS BECAME TOO TIGHT TO CONTINUE, AND REQUIRES

DIGGING. THERE WAS A SLIGHT DRAFT COMING FROM THIS CRAWL.

THE END OF THE PASSAGE TERMINATES IN A BOULDER CHOKER. HERE, THERE WAS A DEFINATE DRAFT, THE SHELL OF FRESH (SURFACE) AIR AND SPIDERS/CENTIPEDES. IT WAS PUG TO THE RIGHT (UPWARDS) AND AT THE START OF THE CHOKER (DOWNWARDS). NEITHER COULD BE PROGRESSSED WITHOUT FURTHER UNDERMINING THE LOOSE BOULDERS, SO THE DECISION WAS MADE TO TURN BACK - RATHER THAN RISK A COLLAPSE.

The other lead examined was a traverse above the ladder pitch to try to reach a continuation of the passage. Despite it looking quite promising, we found very little - a too tight small rift continuation forced by Brandon, and an aren ab the for side which Tom climbed a short way to see the passage continuing up - but requiring a more serious bolt climb. This may be worth pursuing but not as an urgent priority.

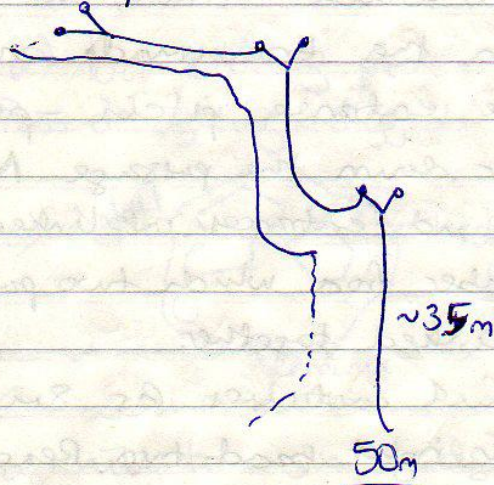
VALLINA BOTTOM ENTRANCE NEW GPS

30T 04 50840 492571 (but this doesn't put it inside the vegetation line).

25-07-11 774 - Morenca. Mandy Fu & Jeff Wade.

Rigged the entrance pitches, + 10m traverse in preparation for future trips into 2009 extensions. Bolted the ~40m underscended pitch, prior to the Happy Holiday traverse, and successfully made connection with Regaton streamway. Surveyed ~~by~~ from a cairn in streamway back to a cairn survey station in Morenca level. The pitch required 50m of rope.

Rigging guide



The next trip, we plan to investigate the drafting boulder choke in 2009 extensions and also the underscended pitches in the area, although these are likely to connect to Regaton below.

26-7-2011 T74-MORENOCA (200m surveyed)
JEFF WADE + MANDY FUR

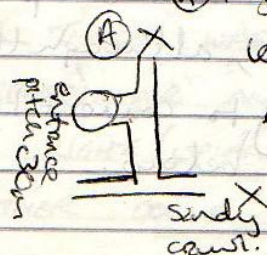
Rigged across 3rd traverse, went to explore choked passage off in new stuff. Also took equipment and dropping 2 unexploded shells, but will not likely connect to Regaton below. In the end we never had time to drop the 2 shells, as we found a way past the choked passage, which had been supposedly been closed as choked by some chimp called Patrick 2 years previous. We found a way past into a 10 meter wide passage within 2 mins! In total +200m surveyed and still many leads to look at. Very wide in places. Found old foot shiel in final chamber, no new. Also found bat copes in passage leading to final end chamber. Plan to go back in a couple of days after resting from the 200m entrance crawl.

28/7/11

Encarnada 3380.

SUSS team - Jen Sloan, Louise O'Hara, Liz Harding

We went to tie up leads in the Encarnada entrance. ~~Down~~ Left at the end of the entrance pitch - previously unsurveyed and left further down the passage. Mostly

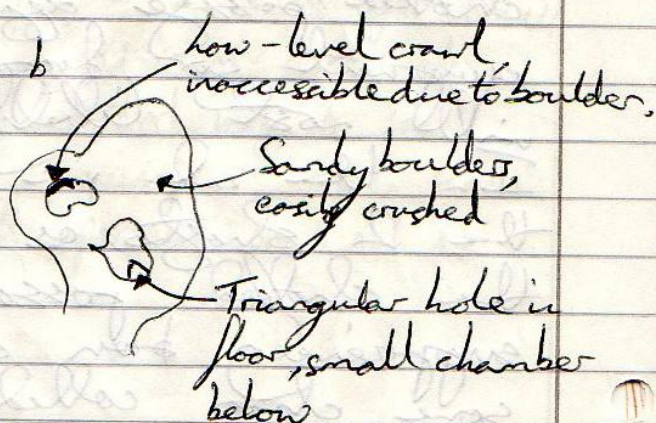
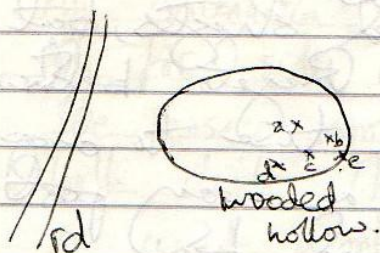


(A) tight traversing mostly and entrances interlinked. Passage led to bouldery chamber from which two passages went ~~a~~ followed but they linked together.

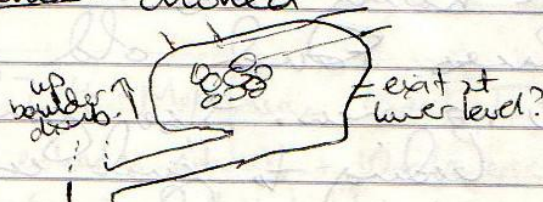
(B) sandy belly crawl continues for 8m approx. another 10m? after right hand turn. Reach a

(C) traverse going straight on which ends in a boulder choke.

Surface work - went to site. 2949 - woodland along the road Southwards from Encarnada, past the farmhouse. In a heavily vegetated hollow we found 4 possible passage entrances.



d - belly crawl tight entrance crawl of about 2m into large chamber boulder filled - several possible ways to push but all ~~choked~~ choked



one GPS for this set of 4:

30 T 0448058 4801065

a) low bedding plane ~ 4.5m long at least (1x Jen + 3.3m on disk)
Pass draughting - diggable?



Not very promising

e - we heard running water so walked / struggled up hill to SW edge of hollow - boulder field under heading underground - removed some boulders and entered to find boulder dig within.

V. wet but heavy rain recently - so probably dryer in better / more typical weather.

No photos taken today - camera card forgotten.
May attempt to take some later if get opportunity.

GPS: 30T 0448020 4800992

28/27/7/201. ~~Time~~

Tim Webber, Brendan Sloan, Richard Sore
3380

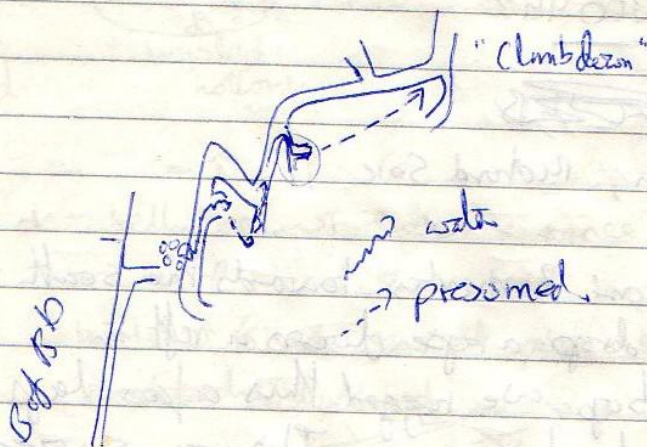
Intended to dig investigate some ? marks towards the south of Mesorrey. 1st job was to drop a rope down a rift in the floor just after the climb up. we rigged this a few days ago. This turned out to drop into stream way. This was sorveger down stream to "too tight" then up stream. Followed water to junction then left the stream and went left. This was pushed until a tight bit gave a small chamber. moved a large limestone rock and used it to bash on large sandstone block, 1m x 0.3m x 0.3m, which was blocking the way on. With this removed Tim W gained a series of small chambers

These chambers contained footprints and a cairn. Brendan's
Conferred we had tried through to "I want my mom" chamber.
Back to streamway we surveyed on to a pool with small
airspace and a void beyond. Not wanting to totally immerse
ourselves we went back and up the gorge.

Surveyed into a sandy dig that Times had excavated
then forward to another digging way down. This was to the
other side of the divide we found before.

Back up to the level and investigate a possible lead. While looking
good on the survey it turned out to be 3 inches wide.

Next job was forgotten as we walked on down the passage
and kept finding side passages to on the survey
also the stream that we had found on followed earlier
kept appearing and then going off down a side passage.
This was traced to be coming from the boulder dots that links
through to "Boulevard of broken Dreams"



28/7/2011 S. Vega above Vallina

Phil P; Louise, Liz, Jenny, Tim, Richard

Parked cars above Vallina at end of surfaced track next to barn. Easy walk along track to West then up ridge to top and boundary into our area.

Aim to look at a number of sites that were undescended

2147 Shaft only partly descended, just out of our area!
Tim Richard Sore descended. (on video)

"A small but obvious hole opposite site 1754 leads 1-2 m down slippery mud and into a shaft of approximately 8-10 m depth. Having descended this shaft I landed on a boulder floor amongst the bones of a dead sheep and some plastic sheeting - I guess a farmer had used the shaft as a convenient place to throw rubbish?

A quick scout around at first indicated that the shaft didn't go anywhere, but ever optimistic I removed a few rocks to find that I was standing on a false floor. To force a gap big enough to fit through I had to dig through the decayed sheep carcass - so called for a crow bar and set about the unpleasant task.

Having dug a big enough gap in the floor I was joined by Phil Papard - who placed a bolt in the wall to aid my descent.

Downward I squeezed - now getting very close to aforementioned dead sheep - and into the second half of the shaft.

This ended dissappointingly quickly - filled with small, loose rocks approximately 6 m below the false floor - at this point the shaft being approximately 2 m wide. There is the remote possibility of an unpleasant and unpromising dig through these rocks in one direction - where the wall of the shaft appeared to start to bend towards the horizontal - however I would suggest this would be a waste of energy given the other promising leads in this region." Richard Sore

1140 Cave not explored, at ^{South} end of surface rift - 5 m long over mud floor with remains of two goats spread across floor. On right of chake is a hole down (1 m?) that would dig - out word draught. ~~At~~ At this height - 600m+ it suggests a local draught from higher up - not a good dig. Some of cave done, as disto x was to hand.

1139 Explored, photo, video, survey

2306 Explored. No description

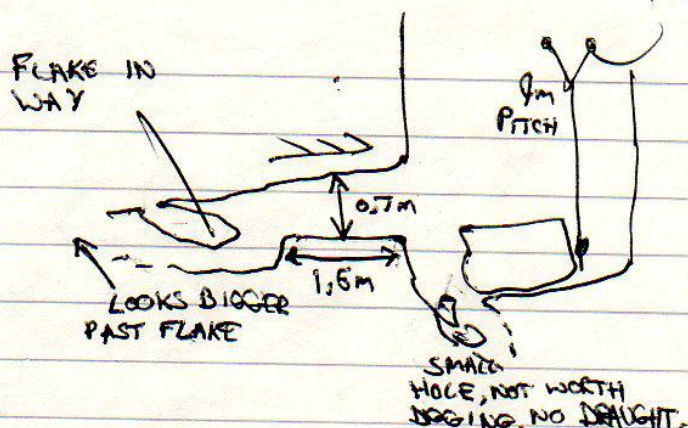
28-7-2011 MORENOCA - 774 (395m SURVEYED)
JEFF WADE, MANDY FU, BRENDAN SCOTT,

A return trip to continue the surveying of the new girds in 'Patrick's Error'. Today we had a new guest Brenden to help out, which turned out to be well worth it, as we managed to survey 395m of passage consisting of 40 legs. It was all of good size and ended in a large breakdown chamber. However to get to this we had passed a couple (at least) of very good leads still in need of surveying, plus a canyon of ~20m which needs to be descended on our return. On entering the survey data we are only 40m vertically away from Picon, 'Maga Bat Passage', which may in fact be less as we climbed (or Brenden climbed) 15m above our final survey point. Our next job is to check Maga Bat Passage as it describes a draughting slot for midgets. This could be a easy way in, hopefully.

29-7-2011 PICON - 075 + FRANK'S CAVE
JEFF WADE, MANDY FU, BRENDAN SCOTT,

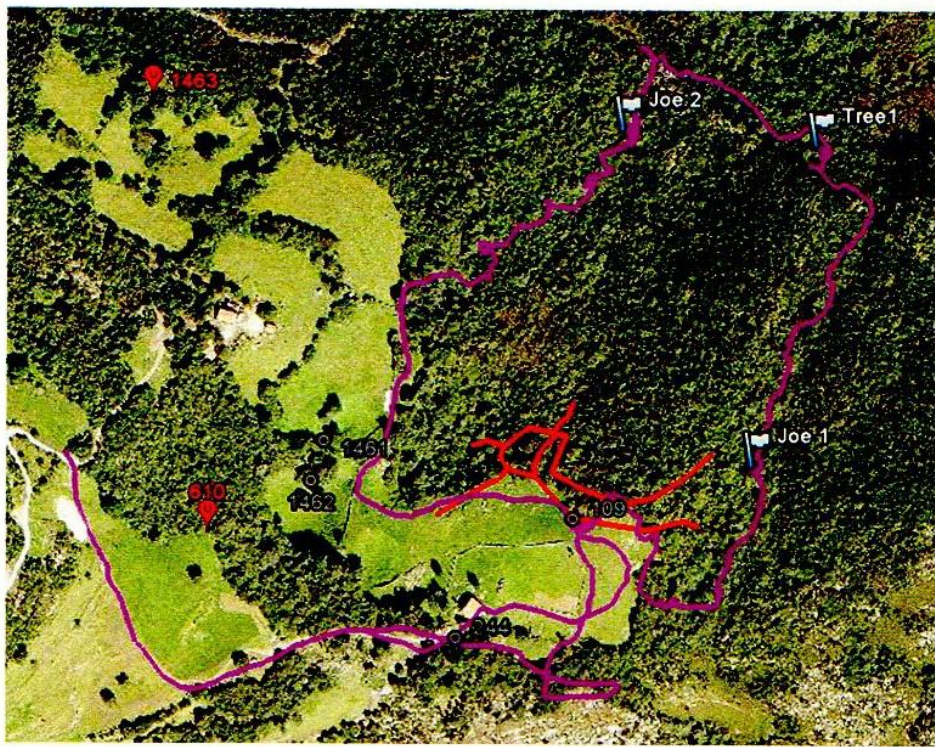
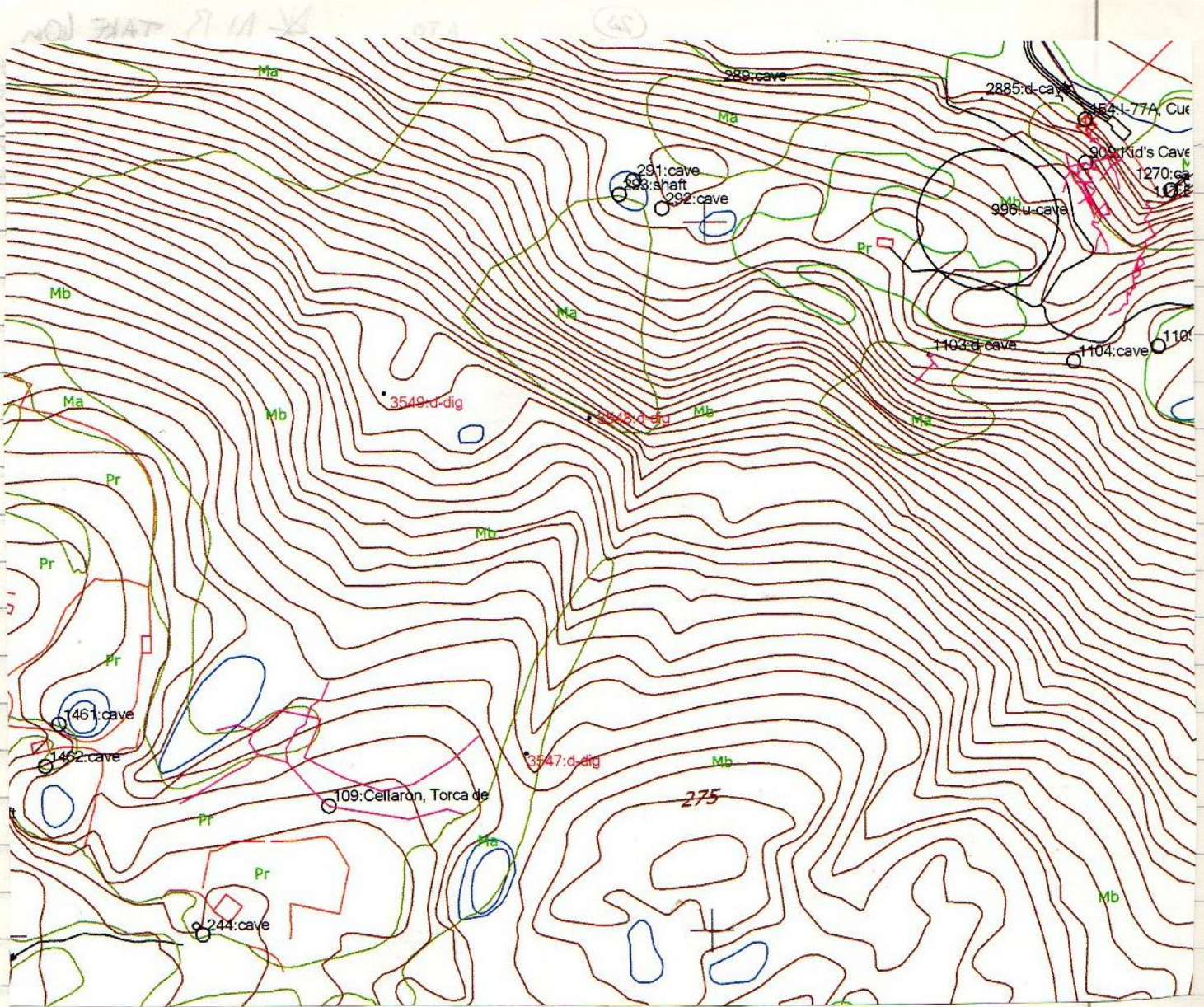
Went to 'Maga Bat Passage' slot to see if Midgets could pass it. Sadly this is not the case after Mandy & I both lost a leg. Unfortunately due to the shape it would be particularly difficult to get back out (sketch below). Could possibly benefit from some engineering. We also had a tourist trip through the rest of Picon looking at other walk-in leads. We also re-discovered Frank's cave on the walk down the hill (spotted a few days previous) but this didn't go either.

(23)

↑ TO
12m PITCH* N.B. TAKE 60m
ROPE TO RIG BOTH
PITCHES, AS WE
WERE A LITTLE
TIGHT WITH A
18m, AND A 12m.

30/7/11 Phil, Joe and Ivan take 2 machetes to attack the jungle running down from Cillavon towards Secadwa. Large areas of pitlas karst with thick sarsaparilla etc but there are animal tracks that are easy to follow with more open areas under the trees. Entered the valley that runs down over the 50m wide passage in Cillavon finding one small draughting hole (354). Emerged at the cliff line seen on the Google Earth photos and turned to the NW. Cliff line is undercut for about 160m but with only tiny "pocket caves". One possible exception is a hole where a lightning tree has regenerated. It is occupying most of a small cave which may continue behind. There was no draught. (site 3548)

At NW end of cliff line a shallow valley runs back up. (The first valley had a number of depressions; both had evidence of old clearings for charcoal production). One small draughting hole was found in the second valley. (site 3549).



3/7/11 Phil, Hilary, kang + Ivan on a "short, jungle-free" walk. Drove to Bosumatin then walked to Las Calzadillas. After consulting the active boards of tracks by the roadside, we decided to walk down to Baker's Bar via Seldesuto. Took track on left of road just out of the village, on the south side.

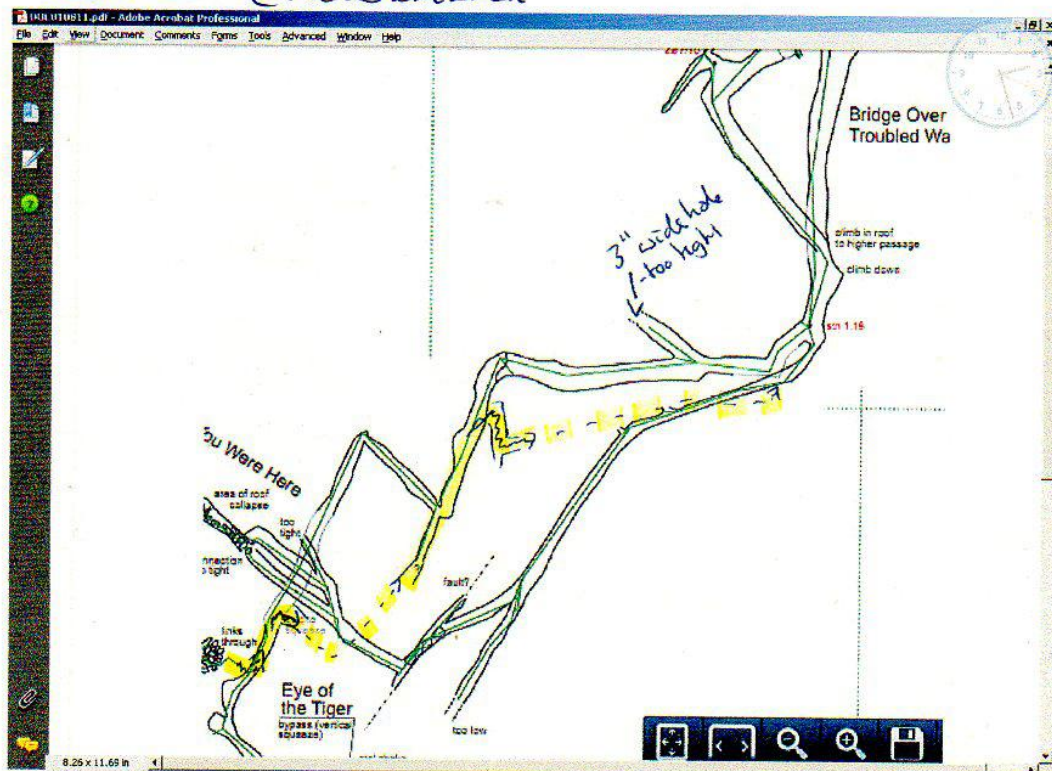
This took us down and out onto the open hillside where new site 3550 was encountered. An ascent is required to investigate the crawl ~~and~~ leading off. Just above is another hole which links in. The entrance is just above the track.*

After that, ~~entered~~ entered the wood and followed a track that took us close to sites 1818 and 2311 then eventually turning back lower down to pass Regular from the east.

Emerged at the judge's house and followed the tracks back down to Seldesuto, then to the Panaderia.

* The promising shaft lip seen from below is just an alcove.

3380 — Encasemada



During the very wet end of July 2011, there was a stream observed coming out of the boulder choke that links into the Boulevard of Broken Dreams.

This stream flowed along the normally dry passage and encouraged investigation of a few side passages.

This map shows the observed and presumed path of the water.

At each point the volume / time seemed to be the same — hence the assumption that this was one stream appearing and disappearing. This flow reappears in a new section of stream way which drains to the sump series and then the "main" stream

Tim Webber
Brendan Sloan
Richard Sore

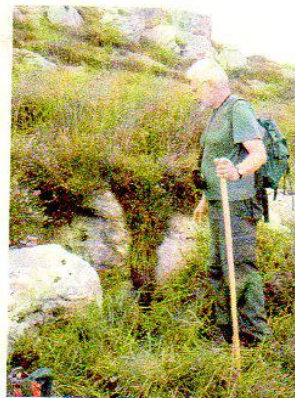
1/8/2011 Phil Papand, Kev, Bob - 1438 dig
Late start (2:00pm+) took digging gear, drill for both
Snappers & caps. Hole seems to be shown too far
up hill on map by some 20m - need to GPS again.
Spent some 4 hrs digging. Draught- ~~But~~ was only very
small at dig site when we started but as we removed
fillers soil/clay it increased to a very good cold
out-wind draught. One large block removed - name
to up/snapper, but - looks good although a long dig.

3/8/2011 Phil, Kev, Bob - 1438 dig
Continue dig, good draught still & at end
could see down some 1.8m to a more open
area, but still in a choke. As way on is
undercut more work is needed to secure area
prior to digging out base of open hole.

2 August 2011 – Joe, Bob and Phil - Walk from top of Llueva col to Risco waterfall via the west of Colina – just got to Baker's before rain!

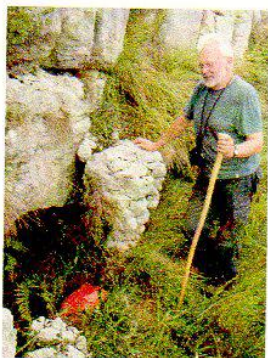
Cave 1/dig undescended gps 242
0453454/4796656 alt 547m
1m by 0.3m hole to narrow crack goes
3m could dig out floor of fill but no
draught so not worth it.

3551



Cave 2 undescended gps 244
0453487/4796677 alt 547m
40m east and 4m lower could have arch
interest. Needs brambles removing to
get in

3552



Cave 3 undescended gps 246 0453553/4796817 alt 518
above 381 and to east 0.6 x 1m cave not explored disto 4m

3553

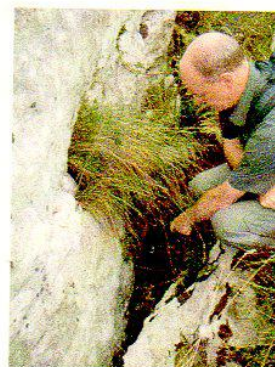


photo reversed

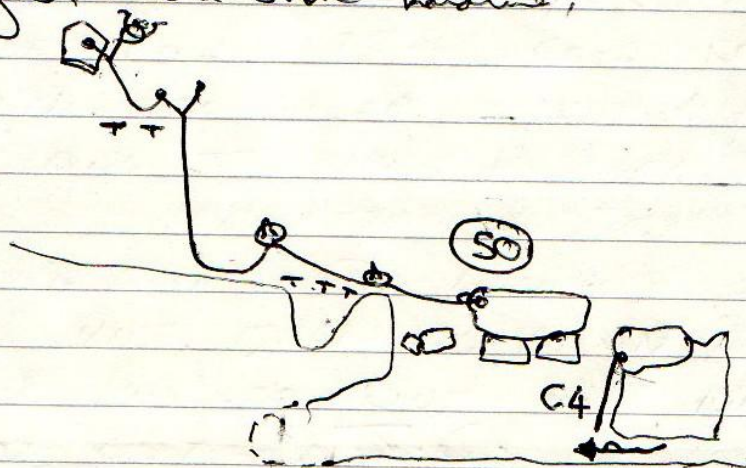
Site 1102 undescended gps 245 0453556/4796835 alt 514m - 6m deep

30-7-2011 TORNO - 2366 JEFF WADE + MANDY FU

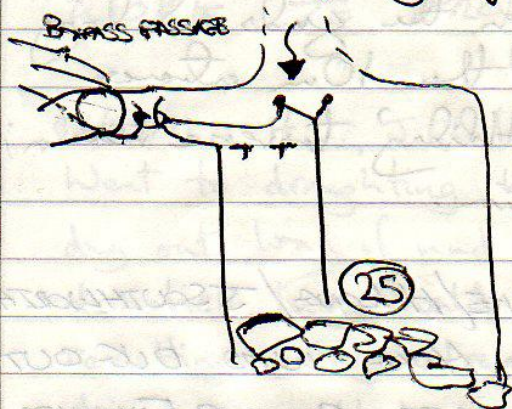
A return trip to passage/crawl off 'Torno Chamber', to enlarge the passage through to unexplored/imped passages beyond (Mandy has previously been through, but the rest of the passage were too big). Sadly, due to high water levels (at least a foot more) it was not possible to dig in the construction. Limited digging was done at the entrance in waist deep water, but was soon ended. Need a dry spell for a return trip, and see if static pad can be removed/draind from the other side to keep this open.

31-7-2011 MORENUCA - 774 (125.6m SURVEYED)
JEFF WADE + MANDY FU

Today we dropped the pitch into a deep canyon near the girl chamber of the new stuff closest to Pica in Patrick's Error. At the bottom we found a small streamway on the same level as Reyster heading downstream (just then camped 'immediately'). The downstream continuation looks low and crumbly in places but, and is an open lead for the committed. A 50m rope is needed for the pitch down and 3 bangers. Plus a shot headline.



We also descended another shaft at the start of Patrick's Error when on a double check through the well decorated twists & second way in/bypass into the yeast girds, I noticed a significant draft from a small window. This emerged as a window into a shaft, with water gelling from above. Descending to the bottom the water sanked through boulders too tight to pass, but visible passage/open 10m below.



1-8-2011 MORENOCA - 774 (241.9m SURVEYED)
JEFF WACE + MANDY FU

The plan today was to go into and quickly explore the remaining horizontal open leads. This we did successfully but 2 of the 3 didn't go. The first at the start of Patrick's Error, which was draughting strongly turned out to be part of the same passage that we were traversing at the top of, and hadn't been to the bottom of a large corner. This not closed as 'Gypsum Passage' was only 40m long even though it was draughting, but incredibly small. The third (gull of old bot geases) 'The Belly of the Eel' went for nearly 180m, but with tight & constricted parts in places. We found out later (as we thought parts looked similar) that 'Gypsum Passage' was part of the same, as only 4m apart at the end of a passage branch-off.

The end of this passage is still going but is only for pushing by the determined.

2-8-2011 MORRIS - 774 JEFF WADE + MANDY FU

After a total of 1020m - odd surveyed said it was looking like anyone else would not want to visit we headed in for one last trip to photograph the finds and doing the pitches & traverses. Ropes on the 10m entrance could traverse & the 1st 'Happy Holiday' traverse remain; as described in the cave description.

1-8-2011 3451 SCHANK/HL/SSOUTHWORTH

A NEW STRONGLY DRAFTING HOLE WAS DIG OUT WHICH LED TO A 35 FT SHAFT AND A FURTHER DROP OF 9-10 FEET INTO A SANDY FLOOR SORAWAY. $\frac{3}{4}$ OF WAY DOWN TOP SHAFT AN EYEHOLE WAS PUSHED INTO ANOTHER AVEN SOME TWENTY FEET HIGH, PROCEED THROUGH TIGHT SQUEEZE INTO SMALL CHAMBER WHERE DRAFT WAS LOCATED IN BOXED CHAMBER. NEEDS MORE WORK. J.C.

2-8-2011 3554 JC/HL/SSOUTHWORTH

PASSAGE GOES DOWN 25 FT STEEP SLOPE STEPPING DOWN INTO SHEEP BONES WHICH PUSHED ASIDE LEADING TO SHORT PASSAGE INTO RIFT TOPS WAS PUSHED THROUGH TIGHT SQUEEZES TO A CHAMBER 5M - 4 METERS WITH A FURTHER RIFT DROPPING DOWN APPROX 8M TO BIGGER PASSAGE BUT WILL NEED WORK TO OPEN OUT J.C.

3.8.2011 3556 J.C. H LONG. J.S. (31)

A SANDSTONE FACE WAS POKED INTO AND PRODUCED DRAUGHT, DIGGING DOWN SOME SIX FEET A WAY WAS FOUND INTO CHAMBER SOME TWENTY FEET DEEP APPROX 4-5M BY 3M BY 2.5M HIGH. THE DRAUGHT WAS LOST AT THIS POINT BUT LOCATED HIGHER UP WHICH NEEDS MORE WORK TO PROCEED. J.C.

03/08/11 H.L. J. Clarke, J. Southworth,

Went to draughting hole I found on the 1st Aug. (3555) and dug out load of mud before realising we would have to demolish large boulder. Snapped it and after dealing with the resulting 4 large blocks found way on down would be large dig, as would be another draughting slot a few meters to the right.

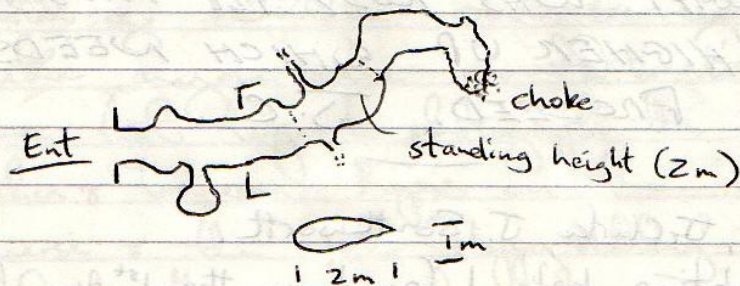
4/8/2011 RIANÓ FOOTLEG, BADGER, TACKLEBERRY, BEN KENT.

ENTRANCE SERIES VERY DRY, STREAM ALSO LOW. WENT INTO UPPER SERIES TO LOOK AT CHAMBER TO THE RIGHT JUST AFTER CRYSTAL MINES IN THE SKY. HAD A LONG LOOK AT MOST HOLES, PASSAGES AND RE SURVEYED SOME OF THE CHAMBER, ALSO WENT TO LOOK FOR A RIFT WHICH ON THE LINE SURVEY APPEARS TO BE ABOVE DOUBLE BARREL PASSAGE, SURVEYED A NEW PASSAGE NOT SHOWN ON THE SURVEY BUT WHICH APPEARED TO HAVE BEEN LOOKED IN. DROPPED A COUPLE HOLES IN THE FLOOR, ALL CHOKED OR MUD FILLED, ONE OF OUR OBJECTIVES ACHIEVED TOOK A LEISURLY TRIP OUT.

(3557)

04/08 H.L. + John Clarke - Fresno

Went to a possible dig first seen in 2006 - GPS position 0453155, 4801469 - and after about $\frac{1}{2}$ hr got into about 20 m of passage ending in a total choke of earth. It would probably be a fairly large passage without the fill.



04/08 H.L. + John Clarke - Rianio

(3558)

Saw people at house and got permission to look down the well. It was 4.13 m to the water from the step at the door opening, with a water depth of 1 m. Top of shaft is walled onto sandstone bed and then lower part is in limestone. There is no visible entry (or exit) above or below water.

GPS position 0451844, 4801024

5/8/2011

LGS HOYES

BADGER, Gary Cullen
LUCE STODART

AIM WAS TO ~~COME~~ RIG ENTRANCE SHAFT FOR FOOTLEG TO TAKE A PANORAMIC PHOTO OF THE SHAFT. RIGGED A TYROLEAN TRAVERSE AS WELL AS DROPPING ROPE DOWN. LUCE HAD A QUICK TRIP DOWN AND LOOK AROUND. WALK UP TO THE ENTRANCE WAS VERY OVER GROWN AND NEW HOUSE HAS MADE THE ROUTE MORE DIFFICULT AS WELL.

4/8/2011 Phil; Kev; Bob; LANK + DAVID - 1438 dig
 Aim to remove unstable area above possible way in, snappers
 used a most of rocks used to build wall to hold up west-
 wall of open hole, no progress down made. Lank got
 engaged with dig & went off to find a better one.
 This he did & come back with a tale of an open hole
 in solid rock with good draught! So we took "time out"
 from dig to this location - not quite an open hole
 but an old cone almost full of "stall" but with a
 good draught. Spent an hour or so removing some rock
 & the floor, looks a possible good site & well worth
 a days dig - but as Calute needs to be removed
 caps & snappers will most likely not work, so
 gen set & big jack hammer is needed. (easy access by
 4 wheel drive makes this easy). A shaft near the dig was
 noted but it is known (1442), but seems to be in wrong
 location by 20+m - will gps next time.

6/8/2011 Phil; Kev; Bob - Hilary in support - 1438
 Yet - a further day at this dig! Removed some
 key blocks & used "foam" to secure the walled
 up backfill, also placed some "Acro" props in
 to secure block above way in. One more day
 should tell us if there is "hard rock" and possible
 to progress with a reasonable amount of
 work. Phil had to go back to Home 2 times
 once for more "foam" & JD's was also out
 V/S & then to get bonguine & tube cutter.

3560 6/8/11

NEIL MCCALLUM, PAUL DOLD, JONNY CATIMBA, BOTTLEBANK

BOTTLEBANK FOUND A HOLE AND INSISTED ON A DESCENT. JONNY & PAUL HAD ALREADY INDULGED THEMSELVES IN A SUBSTANTIAL FUND SO SCIM (MCCALLUM) WAS CALLED UPON TO DESCEND THE OPEN AND PROMISING HOLE. A KNOTTED RISK DESCENT DOWN A WIDENING RIFT LED TO A FILL FLOOR WITH NARROWING FILLED RIFT, NO DRAFT!!

06/08 J. Clarke + H. Long - S. Vega. (3562)

- ① Sloping, narrow rift with slight outward draught just above the barn + depositor. With clearance of various bits of assorted debris it may be passable for a slim person.
GPS 0452123.4795511

- ② Just downhill from 1062 + 2288 is a draughting dig in boulders. GPS 0452515.4795264 (3561)

Site 105. Riano - Trip to inlet past Uzueka Connection to find pitch.
9/8/11 Ben Kent / Alistair Smith

After failing to find an undescended 10m pitch in 2010 we went back to find it after looking at the surveys. Entering the inlet in the dry passage up to the left, bypassing the low streamway, Ben climbed up muddied calcite into a small chamber 5m up in an aven. A crawl under the wall opposite goes into another small chamber with an approximately 3m roof. 10m of walking passage reaches a dry clean aven with a height of ??m and about 2.5 m diameter. At the end of the inlet we found the pitch at the top of the stal slope through a small oval slot in the side of a dripping aven. Pitch is 10m and at survey station at upper levels. Farend. 368. At the bottom left of the slope a calcited flat out crawl also enters the aven 2 metres below. At the bottom of the pitch is a gravel floor with no way on. Water trickles down a too narrow hole heading back on yourself and at head height a tight tube is blocked 2m in. Opposite this there was a calcite flow and straws. The aven continues beyond the top of the pitch but requires bolts.

Uzueka

Sloppy Tube inlet

05/08/2011

Paul Dold/ Neil (Slim) McCallum

The aim was to bolt the 6m pitch and progress the exploration from 2010 done by Paul Dold and Footleg.

Following a whistle stop tour to and including the Astradome for the benefit of those who have not seen it before, Slim and I entered the inlet and assembled the kit.

Neil bolted the aven whilst I belayed; once he was up I followed de-rigging as Neil had a look round the corner. We both continued up stream in a rift passage approximately 0.75m wide, a climb of 3m may require a short rope in the future then after a few meters another climb is encountered of about 10m. This part of the passage is a roomy 4m wide with a pool in the middle.

Neil used me as a ladder to aid his climb up, then temporally secured the ladder with a sling round a lump of rock to allow me to climb up 2/3rds of the climb, I then passed the ladder up and Neil again found a lump of rock that only required a little adjustment with a hammer to allow the sling to stay in place for me to climb up, this will need a rope for the future.

From this point the passage continues for about 60m to a 7m x 5m aven. The water falling from the aven is that of the stream as no other inlets were found. None of our lights were powerful enough to penetrate far up the aven; a good shout gives a similar echo to that of the Astradome!!!!

We exited the inlet, to find the rest of the team, leaving a rope on the first pitch and the ladder on the higher pitch which requires extreme care as it is poorly anchored.

Tackle required for return:

50m of rope to cut to length

15 bolts and hangers

Survay Kit

Huge aven would require substantially more in the way of kit and cojones!!!!

Paul Dold (Mr. Eddy Sharp Pencil)

Surface walking west of Hornedo 08/08/2011

Paul Dold/ Dan Hibberts/ Stuart Genders/ Alan Allsop

We started by looking at a few holes Dan had found a few days before. Walking from the Hornedo bar over the bridge to the north of the bar we headed into the forest on the west side of the river. We looked at sites 3576/ 3568/ 3569/ 3570/ 3571

3576 Hole next to a sweet chestnut tree with 8 trunks, 12" Dia hole not draughting, looking left into the hole a small chamber can be seen.

3568 Split Entrance hole The holes are 3 meters apart, the top hole being the largest. Following my visual inspection I suggested that Dan should put his kit on and explore his cave. Dan had a look around then prodded a few of the sandstone rocks in the roof with a crow bar and this caused a small avalanche this made Dan exited the cave with the style of a startled cat and promptly handed over the exploration baton to myself.

The entrance hole is 1.5m deep with sandstone rocks now on the floor, a 5m deep rift is entered and this continues for 10m to a pot (not descended) at the top of this pot large sandstone boulders are precariously perched but a way on can be seen past them.

3569 Twin Entrance cave The right hole is a walk in entrance over large sandstone boulders to climb up to hands and knees crawl, no draught felt but passage continues. The left hole is probably the same cave and is choked.

3570 Small hole between sandstone rocks, no draught and blocked after 2m

3572 Big Rock Cave

A good draught was felt exiting a small hole under a large rock in the south east corner of a field. An hour of digging and removing rocks made the hole big enough to enter. There is a way on descending 5m down dip this was not entered and no draught was felt but a good draught was felt from the south trending hole heading into the hill. Watch out for the BIG spiders in the entrance! The Cave has been left with logs over the hole.

3573 Farmers Hole 25m drafting deep wide rift with lots of bags of bones and plastic buckets but no smell of any fresh deposits. The rift narrows and passage can be seen ahead, a crow bar would be needed to remove the sandstone rocks preventing progress.

3574 Oak Tree cave An open cave with an oak tree in the entrance. 5m deep chamber with a flake and large boulder in the centre. There is a climb on the south side. The cave has no draught and no obvious way on.

3575 Golf Ball Hole Small hole in large depression where an orange golf ball was found. No draught.

Paul Dold (Mr. Eddy Sharp Pencil)

3571

found? Sink

3041 Temple of Doom

Stag do discovery 13/06/2011 Dan Hibberts, Andy Latimer/ Brian Latimer/ Simon Latimer/ Paul Dold/ John Latimer/ Big Old Gordon

Entrance dug out on Johnny Dingles stag weekend. 2m entrance shaft then slide on back under boulder on mud floor, 2.5m climb down followed by 2m of horizontal caving over boulders to meet the head of a 6m pitch just after an awkward move past a restrictive boulder. At 4m there is a ledge and this can be down climbed with care to solid limestone ledge where the way splits left and right at 35deg.

Left from the pitch was blocked by boulders that were removed to expose an aven where boulders filled the bottom half. Paul Dold descended between the boulders advised of progress by Dan Hibberts but due to the unstable nature, a final drop to the floor was deemed very unsafe and so a retreat was made. We throw a boulder down the hole and this hit the floor and rolled down hill with a good rumble for a good 10 seconds. Following this enthusiast use of crowbars helped remove most of the restriction but this was not descended as its still deemed a little interesting and might require engineering and a spare pair of pants.

Right from the pitch drops down a 1.5m climb into an ascending canyon, after 10m and over interesting boulders a mud and boulder floor is met. On the left a hole in the floor was looking interesting as a good air flow was felt. Andy Dingle suggested he would descend the drop but only if the sandstone boulder was removed that would be above his head, Dan advised that this was not a good idea but the time he had spoken Andy kicked the rock in question out of the way. Approximately half a minute later the piano sized boulder that was supported by the sandstone chock stone shifted downwards causing the swift extraction of all four people in the area.

An assessment on the area was made that we decided to return at the beginning of August to engineer the slot.

4/08/2011
August Engineering 13/06/2011 Dan Hibberts/ Paul Dold/ Mandy Foo/ Jeff Wade/ Gary Cullen

Myself and Dan entered the cave to reassesses both the boulder chokes, Dan placed a bolt and hung a ladder down the 6m pitch to aid the climb. We decided that the right hand slot would be the best to concentrate our efforts as the left hand aven still looked a little scary.

Gary/ Jeff and Mandy did a grand job in transporting scaffolding into the cave and Dan and I constructed a support for the large boulder then hung a ladder off the bar. I decided that it was safe enough to descend and I made good progress corkscrewing down through the large boulders, I moved a few rocks to pass the final restriction then climbed down 2m to a large ledge where I was presented with a 6m pitch in a large 1.5m wide rift, Dan followed shortly after and, after a pant filling moment in the final squeeze, he joined me.

We decided to exit the cave at this point to have lunch and take stock of the work so far before we entered to bolt and ladder the 6m Flake pitch.

The bottom of the pitch is a mud and rock floor, one end is filled with boulders and rocks, air is drying the rock at the lower level. The other end under the ledge at the top of the pitch turns right over muddled rocks into a 5m diameter chamber with a good mud floor.

Mandy and Jeff joined Dan and I and we spent a few hours looking at all the opportunities.

There is an upstream passage that passes a 25m climb in the roof and a conical aven the passage seems to stop at a final aven. This passage shows evidence of a small stream that flows in wet weather. To the right of the mud flooded chamber a rift passage has a couple of drafting slots on the floor that become too tight but could be chemically enlarged. At the end of this passage I climbed down a 1m diameter aven for about 30m half way down the passage splits into two, one side is muddy and the base has a 6" drafting slot on the right. The other side is clean washed to a mud and rock filled floor. I moved some spoil and could see into a small passage which is to tight to pass, where the water sinks.

We decided to exit the cave as no major way on was found despite all areas found seemingly expelling good air. At the top of the 6m pitch Dan traversed over to descend through boulders but no way on was found.

The aim is to return to survey and take a few photos, and possibly descend the left hand scary aven?

Paul Dold (Mr. Eddy Sharp Pencil)

7/8/2011 Dan; Phil P; Bob

Looking at ground above 3357 (Nabe) to see if an entrance post-1st-ramp could be found. Started at 4 ways road junction & went to South & East. Farmer told us about a ⁽³⁵⁶⁴⁾ cave in woods through massive Brombles; took 10 mins to cut 20m path to 2m x 1m ent into 20m of walking, cave to where a gap at a second ent to wood (small & overgrown) leads to 15m more walking passage to still more blocking way - needs snappers to remove roof or floor for 2m etc further walking passage little to no draught at this point - at second entrance, hole in floor dug by Don to a dig under a wall, this seems to lead to a 1m high 0.4m wide rift - that takes a stream in wet-weather, with outward draught - very dry but need small cover!

Now above is a dig in a bromble area 3565, little or no draught.

After above looked above 3357 at point on surface above oven now for ride of ramp 1 - area is very well ~~formed~~ cultivated & any holes will have been filled in - no sign of caves found, but valley to East cuts through sandstone & any passage at top of oven may come out ~~there~~ at this bed, but has been filled in.

~~6.8.2011~~

6.8.2011

3566 JOHN SOUTHWORTH, PHIL GOODWIN
CAVE WITH STREAM SINKING IN FOX CAVE VALLEY (936).

LOW ENTRANCE TO 3M CRAWLING THEN NARROWS OFF, WOULD NEED ENGINEERING. WATER CAN BE HEARD FALLING BEYOND. HOLE 5M ABOVE ON SLOPE IN WOODS DROPS INTO 5M CLIMB DOWN BUT CLOSES OFF.

6.8.2011. 3196 ANDREW LATIMER, JOHN SOUTHWORTH PHIL GOODWIN
DESCENDED LIGHT SHAFT FOR 5M, COULD GO FURTHER WITH
SOME HAMMER WORK.

6/8/2011 LOS HOYES PHOTOTRIP BADGER, FOOTLEG
TACKLEBERRY.

FOOTLEG WANTED A PHOTOTRIP TO PHOTOGRAPH
TOP OF THE SHAFT 360°, AND A BOTTOM OF
SHAFT 360°, STARTED ON A NICE BRIGHT DAY
FINISHED IN RAIN. FINGERS CROSSED MANAGED
TO SHOOT WHAT HE REQUIRED.

7/8/2011. RIAÑO SURVEY BADGER FOOTLEG
TACKLEBERRY

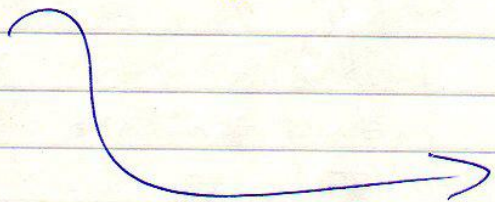
WENT IN DOWNSTREAM TO SURVEY PASSAGES
WHERE THERE IS ONLY CENTRE LINE DATA. ON SURVEY
AT POINT JUST AFTER THE CASCADES. FIRST IS AN OXBOW
AND REJOINS PASSAGE AFTER CLIMB DOWN. THEN CONTINUED
WITH THE SURVEY WHERE THEY FINISHED SURVEYING
FEB 2010. JUST AFTER FRIED EGG ON A STICK.
PASSAGE CONTINUES AS A CRAWL AND MEETS AN
INLET, DOWN STREAM CHOKES OUT VERY QUICKLY. AFTER
A SHORT CLIMB AND SHORT CRAWL COME OUT
TO AN AVEN, WITH AN OBVIOUS PASSAGE COMING CARRYING
THE SOURCE OF THE STREAM. (BOLTING NEEDED) APPROX
15 METRES. (SURVEY WILL CONFIRM EXACT HEIGHT). THE
PASSAGE CONTINUES TO A NARROW RIFT AND CLIMB
SHORLY MEETING SUMP. FOOTLEG THINKS A POSSIBLE
BALEING AND DIG COULD RESULT IN PASSAGING
CONTINUING. PASSAGE ON RIGHT BACK ALONG
PASSAGE STILL NEED SURVEYING. MAYBE CHECK
OLD LOGBOOKS SEE ORIGINAL EXPLORERS REPORTS.

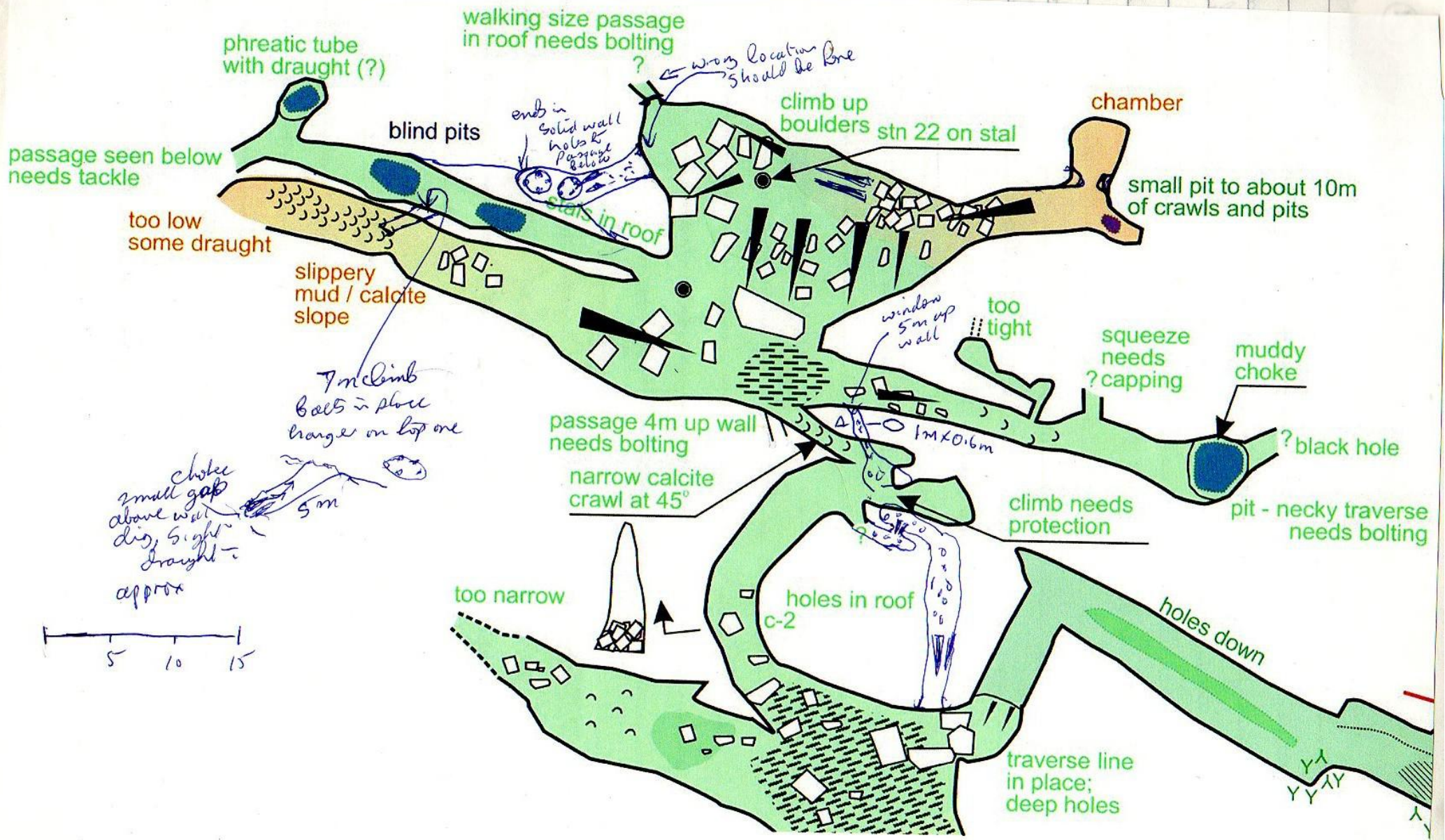
8/8/2011 3567 Phil P., Ken, Bob

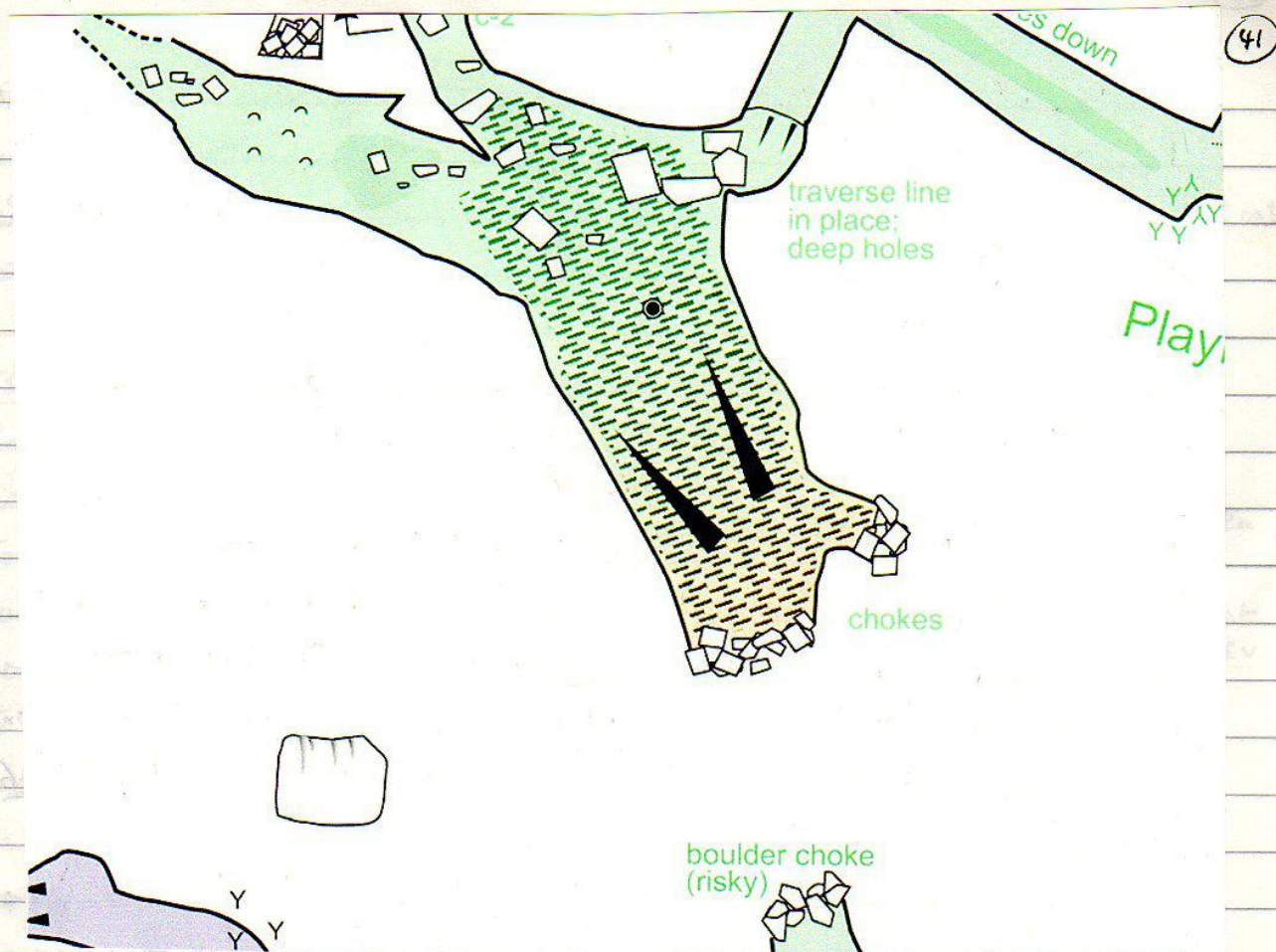
Aim was to look at cave ⁽³⁵⁶⁴⁾ farmer showed us the day before & survey & push. But farmer told us that there was another cave higher up his fields above the wood & took us to it. Open cave entrance in field with no surface hollow - slope down into walking passage that was explored by farmer when a ~~the~~ young boy. The cave had no draught - as far as I could tell, but outside temp was only some 17°C. Cave is part of a "network" type cave, some controlled, chokes & dyps were not looked at, just the easy open passages some 140m surveyed & a few photo's taken - would benefit for another ~~trip~~ trip to push. The open, big & dry nature of cave suggests it may have an archaeological interest.

9/8/11 Phil + Ivan; John Southworth & Clarke, Andrea Lattin, Phil Goodwin.

Phil P + Ivan entered Llanio (3234) at 1030 assuming the other group would arrive soon. They arrived as how or so later giving Phil time to bolt into passage at the NW extremity. Passage ended at drops down into "blind pit" passage to the south. A number of bolt climbs, traverses and pitfalls were then tackled - a lot of work which is shown on the surveys over







4/8/11 Cueva Regato 3494

Johns, Phil G, Tony B and Nigel D into cave to rejoin passage, at end - not drawn in on survey. Also to take photos. TB and PB went down sloping earthy slide into stream passage. TB climbed out by another route forming two connections. JS followed climb up at end of chamber below ladder pitch, saw a high level passage which TB climbed into by another route. Closed down after short distance. No further obvious leads. Detail sketched onto survey.

5/8/11 Site 3555

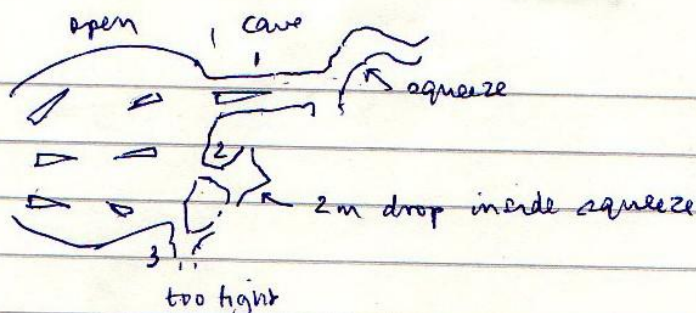
Johns, John C, Phil G, Tony B and Nigel D. J, T and P went snappering in main dig (see entry 3/8/11) - went too light so left. TB and ND opened two other entrances in shakehole. TB chiselled way into middle one but it was

14
blind pot (2).

Rift at right
hand side of
shakehole⁽³⁾ too

tight but might

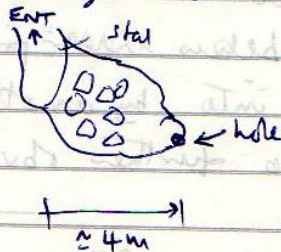
open up lower with some more digging. TB thinks
v. small connections between 1 and 2 and 2 and 3.



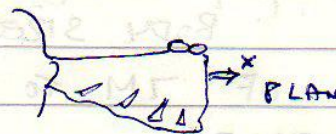
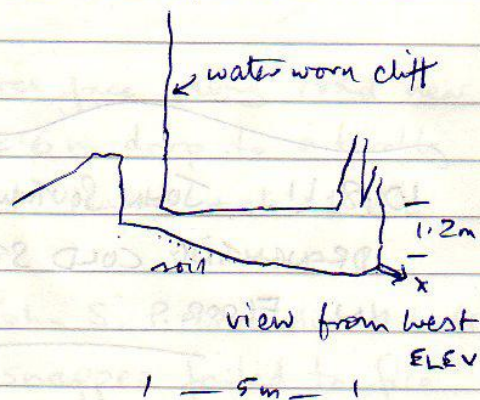
6/8/11 Nigel D, Tony B spot checking over Hornedo way.
Large blind shakeholes at 0449844 4800159 and 0449884 4800160
in eucalyptus plantation. 2236 checked. Shakehole³⁵⁷¹
at 0449636 4800225 looked promising so return to dp planned
See 9/8/11. Met up with other Johnny L etc who dug into 2246.

7/8/11 Tony B, Steve M, Nigel D to El Suto 3450
Johns et al were rigging. Surveyed in to top of
third pitch but beaten back when time ran out so
left survey to be finished later.

8/8/11 Pete S, Nigel D, Tom H. Down Picon to look
at drop down in boulders not far from entrance. Down
slope through squeeze in boulders against left hand wall
(looking in). Another squeeze down then get to chamber
with small hole in far corner.
Removed load of boulders
getting increasingly muddy
with water trickling down.
Could see down another 2m
or so but still tight. Gave up. No draught although
draught felt in squeeze round boulders

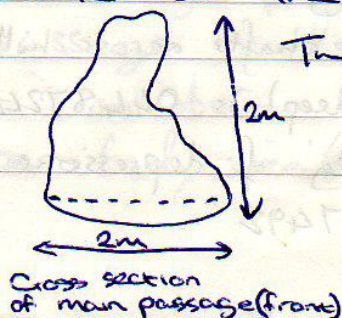
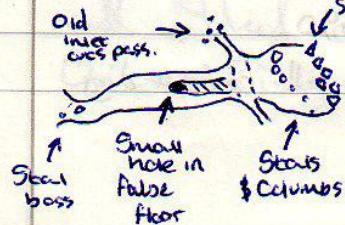


9/8/11 + CC digging team (TB, BB, LG, GS, ND) plus LT and SM) with supporting artists went back to La Venera area to 3577. Two digs started close together then all effort concentrated on left hand one. Dug down about 2m in sandy soil with a few dry rocks. Easy dig. Eventually TB squeezed into chamber about 5m long by 1.2m high with most height at far left hand corner. Took pictures. Bar poked down further (see 'x' on sketch) so worth another dig. Moved over to 3564. Pushed Tom through tight squeeze (see below). Photos in section before stal boss. Surveyed from stal boss to entrance (29.7m). To be continued...



Beyond the stal boss was an ^{old} wide stream passage, floor crusted with stal as before. This was roughly 2m wide by 2m high (1) on diagram. It continues at the same profile for a while until a few slightly higher ^{PREVIOUS} inlet passages that cut across the higher part of main passage. Toward the end of the main passage is a collection of stals and columns ~~that~~ leads to (behind/through) a small boulder choke where we must be fairly close to surface due to me being able to see roots of planes or bushes. Back in the main passage is a concave false floor where a hollow is beneath (Possibly 4 or 5ft). This lower passage? could have possibly been connected to a hole seen earlier at the previous boulder choke towards the entrance.

The hole had a slight draft.



FID— Zne Easting Northing Sy
 3570 W 038 30T 452099 4797569
 3568 W 039 30T 449061 4801284
 3569 W 040 30T 449077 4801288
 3571 W 041 30T 449011 4801272
 3572 W 042 30T 448913 4801270
 3573 W 043 30T 448952 4801136
 W 044 30T 448952 4801136
 3574 W 045 30T 448962 4801046
 W 046 30T 448904 4800981
 3575 W 047 30T 448950 4800752

Honedo: Paul Isdel SPS readings.

10.8.11 JOHN SOUTHWORTH, ANDREW LATIMER, PHIL GOODWIN 3578
 DRAUGHTING COLD STORE. LONG TERM DIG ALONG RIFT
 IN FLOOR.

10.8.11 JOHN SOUTHWORTH, ANDREW LATIMER, PHIL GOODWIN 3579
 BODY SIZED ENTRANCE INTO CORKSCREW DESCENT
 OF 7M TO TIGHT MUD FILLED SLOT WITH SLIGHT
 DRAFT.

10.8.11
 JOHN SOUTHWORTH, ANDREW LATIMER, HARRY LONG, PHIL GOODWIN 3581
 50M LONG WALKING SIZE PASSAGE TO CALCITE CHOKER,
 EVERYTHING WELL CHOKED

07/08 J. Clarke + H. Long Went to look at site 2539 but
 found entrance blocked by freshly tipped soil from
 forestry work. Still blowing but would be large dig.

Went to 2241 at El Suto and John crawled in to where
 it was completely choked about 7-8m in with water
 dribbling down thro' fill.

08/08 J. Clarke + H. Long - Cobodal area.

3585 1) Line of 3 small shafts across hillside. GPS for the top
 one (about 4m deep) is 0448724. 4797690.

2) In a 'hidden valley' of depressions is a small cave + dig
 at 0448611. 4797492

3583

10/08 H. Long - Alisar road.

(3582)

Hammerable entrance to tight 3-4m drop. No draught.

07/08 Riano J. Clarke + H.L.

(3584)

John noticed a small hole in the rock face along road near Espada bottom end. Thru it was 2-6m drop to enterable cave if entrance could be enlarged. Hammer + chisel did some good but not enough.

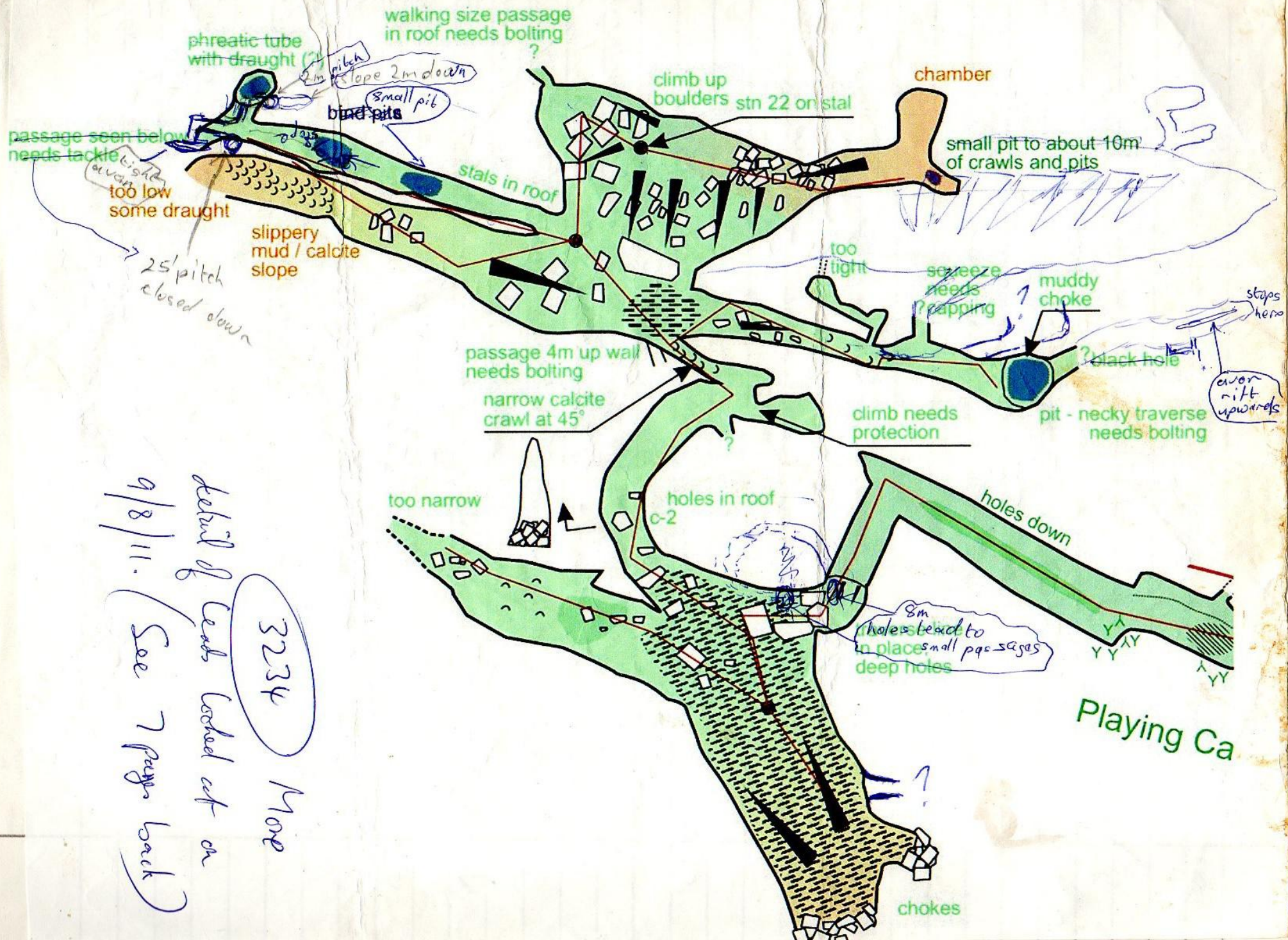
08/08 A return with a snapper plus John S. P. Goodwin + A. Latimer failed to do the business as the snapper failed to fire. We left it for a while then cut wires off against top of hole.

10-8-08 Vallin - Sonny Pyle + Sude, Rachel Mills, Alan, Stu, Ali N.
(+ Aolfe + Anhu + 3 Catalans.)

Tourist trip to Devil Chamber, then to strongly draughting choke at end of passage to right before Devil Chamber. Turns out the Catalans had barged this last November (2), can now get up into choke not needing bang but v. loose + dodgy (John P.). Anhu came in later + did some more, apparently getting into side bit which could be barged (?). Catalans replaced rope on their climb near The Canyon.

12.8.08 Dead dog dig (3554) Andrew Latimer, Phil Goodwin
John Southworth

Into shakehole and on far side a cave leads you down on 8m mud slope (hand line needed) into bone-filled pit, left into a rift for 4m then sharp 90° turn right for 8m brings you to a tight pitch of 10m and descends onto solid floor, passage heads southeast into mud filled chamber, no obvious leads and no draught. On exiting chamber body sized tube can be found

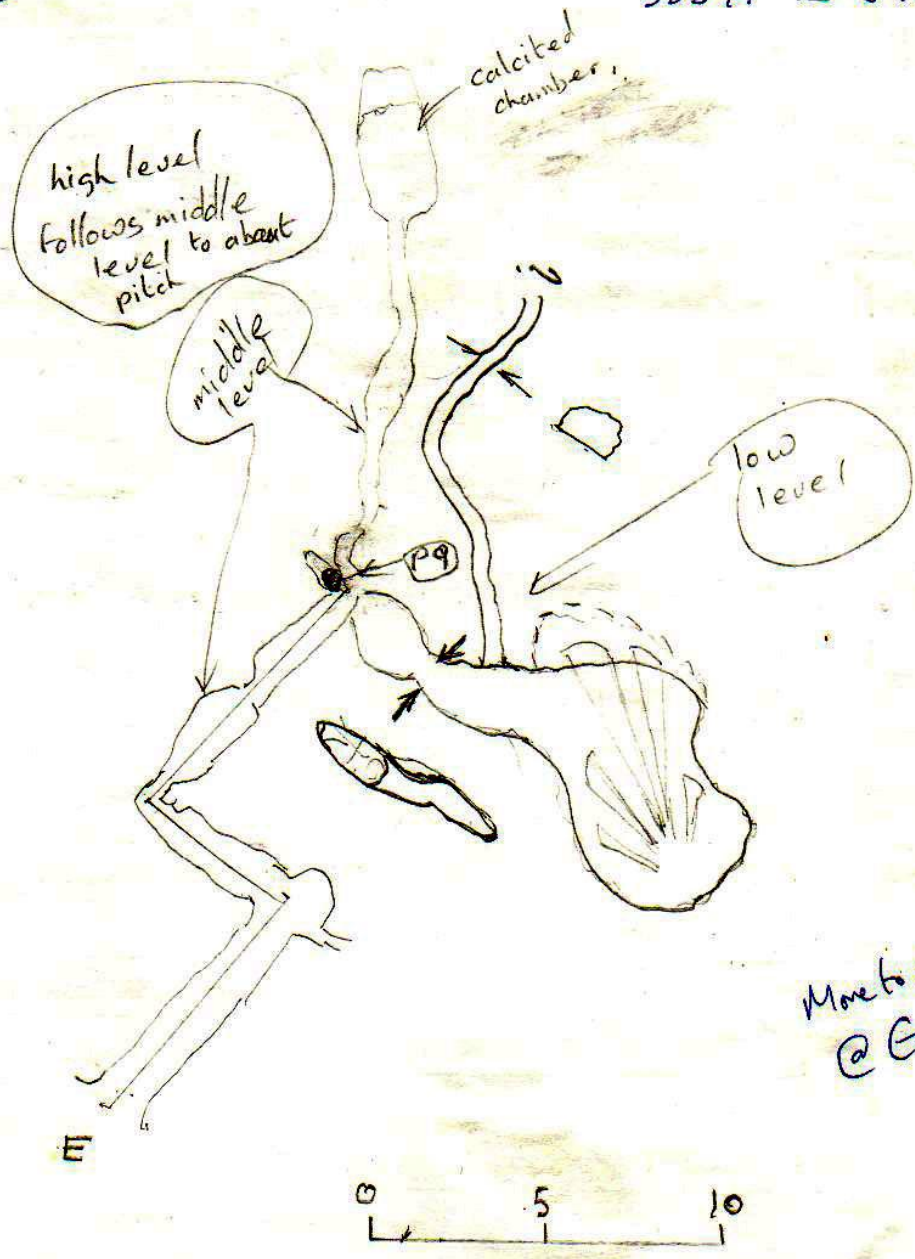


32234 More
 detail of leads looked at on
 9/8/11. (See 7 pages back)

in right hand wall and has been ^{Top} pushed for
approx 20m still going. from ~~up~~ of ladder
rift continues heading north for 20m into
calicited chamber too tight!

w/100m?

3554. 12.8.11



More to do
@ Easter 2012

12-8-11 CUBO DE LA REJADA

Rupert + Pedro.

Carried in RS's diving gear to SQUIRRELS PASSAGE, and were united with kit left from Easter (cylinders, lead, ladder, etc).

Whilst PS put 2x spits in for the ladder, RS carried lightweight kit to the sump, down 2 awkward cascades. (Rope rigged here).

After c. 250m, an area of low airspace and deepening water was taken to be the start of the sump. 30m of line was laid in a large gloomy passage in a northerly direction, to 6m depth, and continuing.

After this quick recce, the dive gear was left near the sump and RS rejoined PS. As Pedro wasn't cold, RS went for a quick look in the upstream direction. Surprisingly, after just c. 60m, this ended in an inviting looking sump (if such a thing exists).

Both then left the cave leaving everything in place.

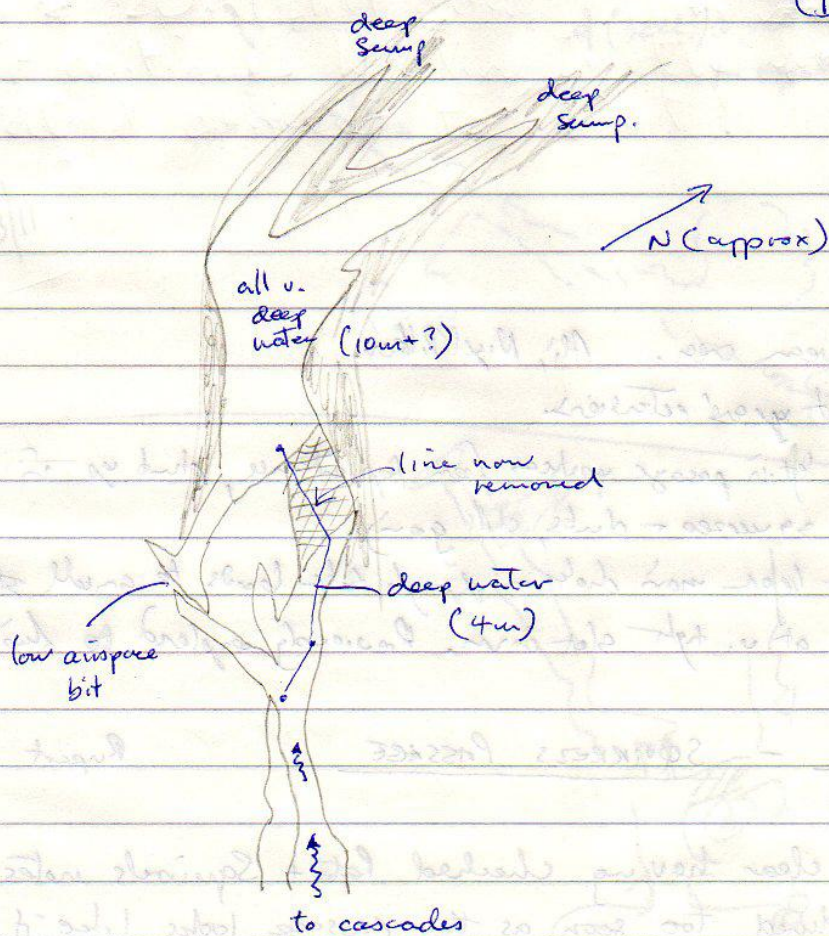
12-8-11

Rupert

RS went to the tackle dump in Squirrels, and carried an extra cylinder + valve, and a big line reel, to the downstream sump. With more neoprene, better lighting and more time, a good look around was had.

The point reached yesterday was quickly attained, and line laid up to surface in a spacious canal. This was soon found to lead back to base via a low duck in one direction. In the other, some 30m of aqueous rift over very deep water was followed to a split into 2x parallel cross rifts. Both these sump, the way on below being one metre wide, long and deep flooded rifts. This whole area is very complex and would be difficult to survey.

RS therefore reeled in his line back to base (as it was no longer needed), and left the dive kit here. Also placed 2 bolts on the cascades en route out to make them easier to climb with kit. Next time it is probably best to lay a thin line through the low airspace section to the end sumps as there are few belays here.

Sketch of end of Squirrels
(Downstream)

12/08 J. Clarke + H. L. - Riano

Back to 3584 and after a session of hammering, John got down to the floor with no way out.

12.0.201

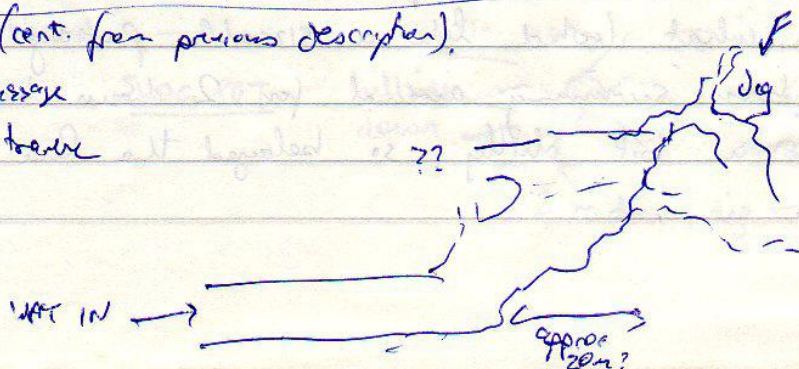
Phil Goodwin, Andrew Lattimer, John Southworth 3588

A 5 M CHECKED SHAFT @ 2M BY 3M, WAYS ON BLOCKED BY RUN IN. ENTRANCE 20M SOUTH OF G.P.S BY A FENCE.

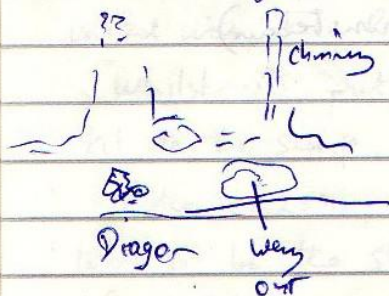
0445926 4800342 EL 197M

10.8.11 Valtin (cont. from previous description).

Also noted red passage
or choke - needs to be
bolting



Jonny climbed up in roof over the Dragon in Max area - c 10m to narrow rift.



13.8.11 Espada - upstream over. Ali, Nigel, Peter.

Resurveyed to start of last years' extension.

New passage found on left in passage upstream from top entrance, climbed up in short side passage followed by squeezes & dubs, still going.

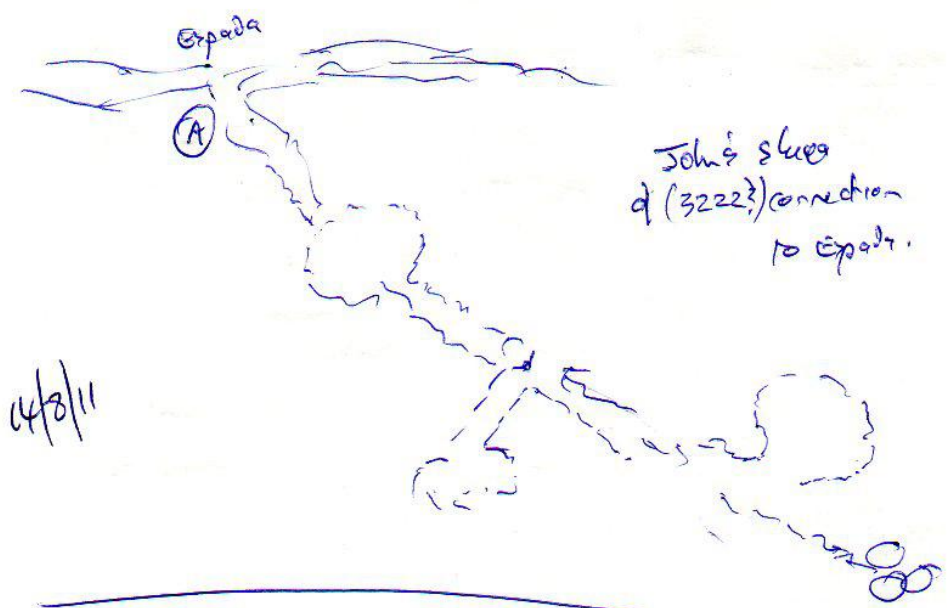
Passage on left just before main choke - though the leads to small strongly dripping passage ending at v. tight slot down. Previously explored to this point at least.

13-8-11 RENAIDA - SQUIRRELS PASSAGE Rupert

All has now become clear having checked Pete + Squirrels notes.

Basically - I had dived too soon as the passage looks like it sumps. However, Pete + Squirrel had found a low airspace arch and boated along a deep canal to the chamber at the end. Having finally arrived here, I first followed the passage indicated to the RHS - as a cascade could be heard. After several tens of metres of awkward going in a small passage, I realised I was going upstream and could probably hear the rigged 2m awkward drop.

So then I dived along an area about 2m deep over clear sandy ripple-marked floor. This didn't look sumpy but ended at a deep pot. Dropping down a spacious rift I landed at a depth of 9m with what looked like a sizeable passage continuing N. As I had been swimming around for 2 hours looking for a sump I was a bit chilly, so belayed the line and headed out. 4 hours.



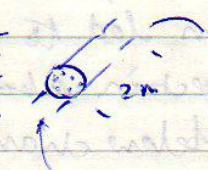
4/8/11



10/8/11 Ali / Nigel checked out 3567 and added some detail
Two other entrances lower down field: 3589 with wall round
one side — sketch →

SWG POT

hillside
down

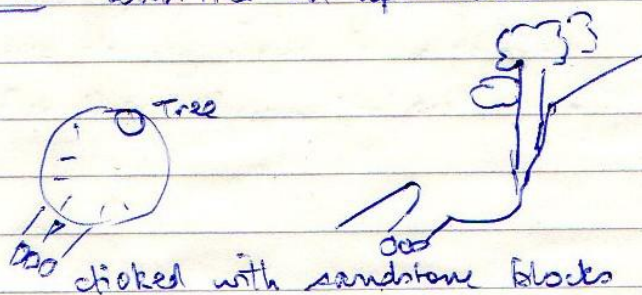


choked / false floor
easy dig slight
draught out

2 m down dig — slight draught out

Then SLUG POT TWO 3590 with tree on uphill side

Tree may block
continuation of
passage into hillside



TB/BB snapped flowstone ~~to~~ in 3564 but not
possible for big buggies to squeeze through so Tom went
through again and photographed.

11/8 Tony B, Bill B, Lewis, Geoff S, Nigel D, Tom H to Hornedo
area and checked out wood containing 3568, 3569 and
3570. ~~From west to east:~~

3568 Hole down with horizontal entrance a couple of meters
away. Already descended by Paul D.

3569 Two holes ~~one up and one down~~ ~~one up and one down~~

East: narrow vertical rift then sand filled.

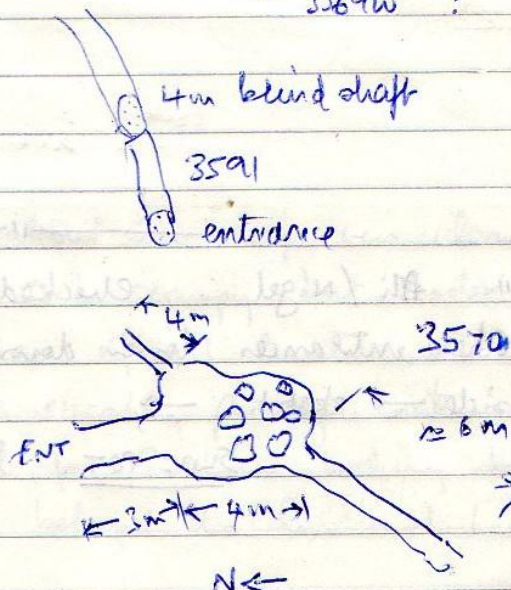
West: open blocky
chamber leads to
rifty section with
6m underscended shaft.



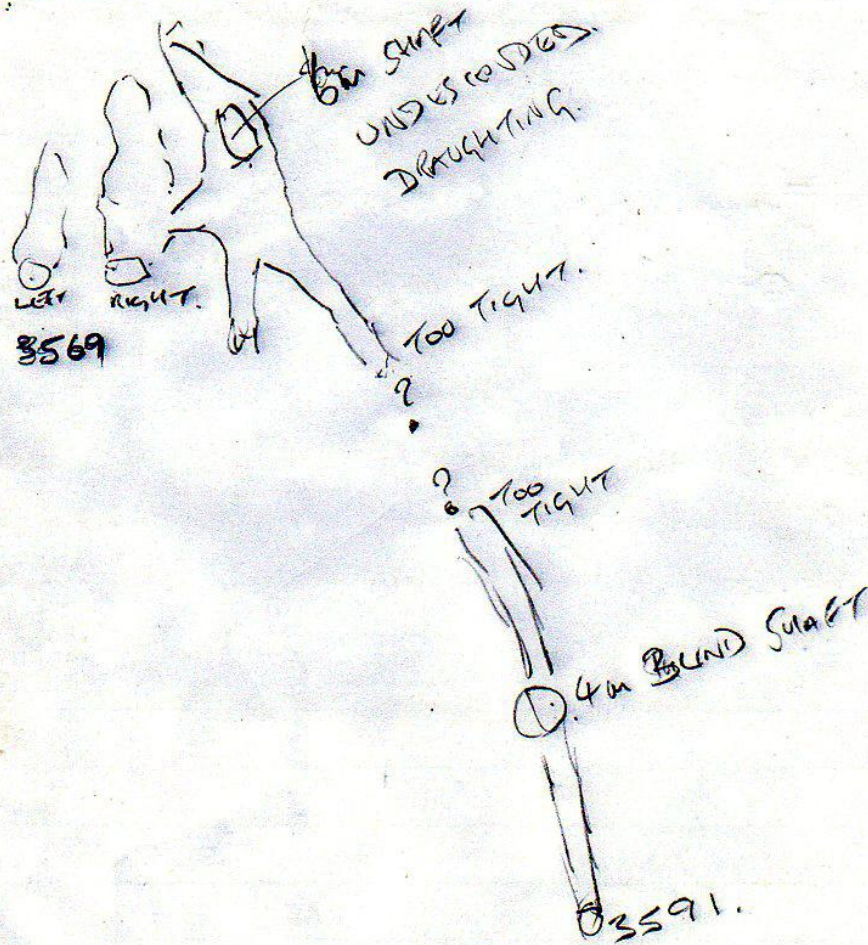
3591 Narrow rift with
pot in floor

3570 Chamber with sandstone
roof and large boulders on
floor - cross - rift

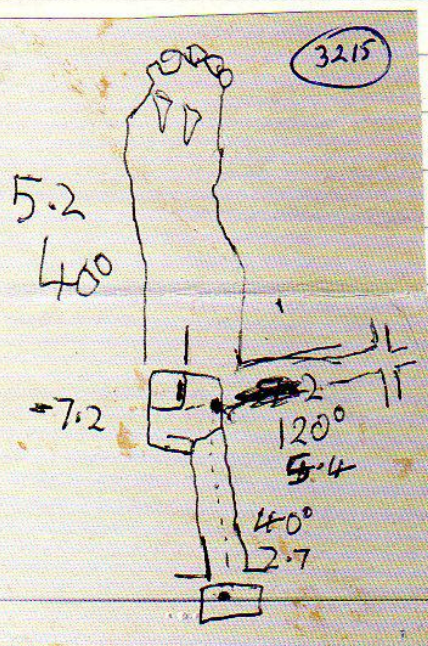
NE rift too tight. SW rift
dug into by moving
boulders led to 6m
long section about
3m below chamber



Also visited two other holes at 0449093 4801296 and 8-11
0449084 4801290 but neither looked promising. Photos
taken.



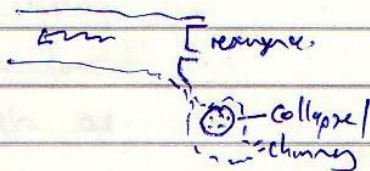
14/8/11



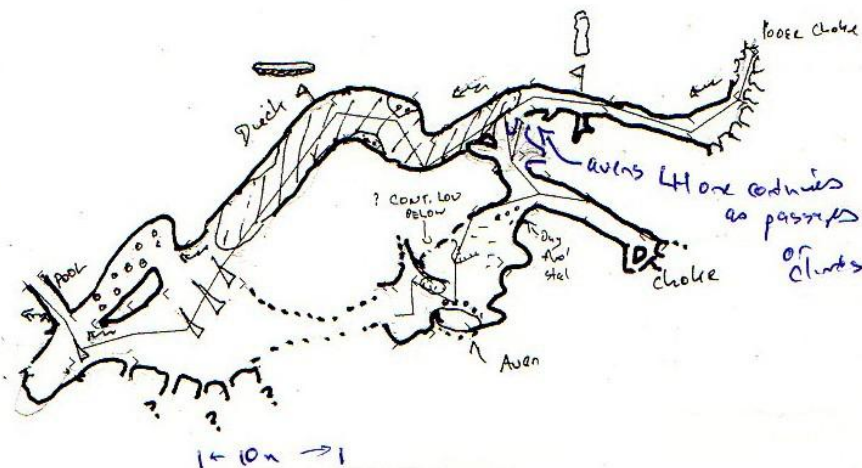
Survey notes (updated)
for 3215.

14.8.2011 - Ali, Simon Corbett, Pi Rithu, Johnny & Jude.

Rien's Resurgence - noted a 2 m deep chimney above the resurgence (this is below the road & different from Pozo Negro) dropping into pool from which daylight at the resurgence can be seen, not fully explored, no obvious draught.



Upstream Espada - managed to lower water level in duck/sump by about 6" ~~at least~~ by digging out gravel at downstream end. Stream continues to unstable choke. Passage on ~~left~~ RHL side - sandy crawl to choke, with averts on left - one climbed to cont. passage. Further on dry bough stalks to chamber & a bypass to the duck. Couldn't find the connection to top entrance - possibly up the averts.



14/8/11 LEN G, Geoff S, Bill B, Tom H & BOTTLEBANK.

(3564) Returned to Tom Howards Calcite Squeeze.

First day snappering proved futile. This time two in the roof created working face allowing three more forwards and one in floor. Squeeze is now Bottlebank size - just.

Beyond squeeze hole in floor seems to take all draft. Snapper funnel sucked in v. quickly. Needs enlarging to see chamber / shaft below. No other promising leads.

Needs surveying.

15/8/11 LEN G, Bill B. & BOTTLEBANK

(3577) Quick trip to see if worth another dig, in chamber. Roof is continuing down 45° no substantial draft, pronounced 'Aukwrights' and written off at Spm. For sale if anyone requires it.

Sloppy

Uzueka

Tube inlet

09/08/2011

Paul Dold/ Neil (Slim) McCallum/ Diane Arthurs

Slim rigged the pitches and climbs whilst Di and me surveyed. Once Slim was done, he took over the Disto and I progressed to the aven where I took photos using very powerful lights supplied by Footleg. The aven looks impressive and is disto'd to a height of 48m. At the top, an original winding stream passage can be seen and water still flows down the centre of the aven. The lime stone is of a light colour and has lots of fossils of shells and coral in it. Looks a great bolting project.

I took a photo of Slim on the *Combined Tactics Pitch* and then we decided to have a look at the passage over the top of the 3m climb. The passage continues for 200m approximately on mostly dry sandy floor apart from a short 30m section where the floor is wet and muddy, there are a few short climbs and one required us to place a bolt for a ladder (Ladder now removed and a rope will be required for the return surveying trip). The passage finally dropped into a 2m wide passage with dry mud floor with a 6" wide stream and FOOT PRINTS. We followed the passage downstream to a corner with large rocks and stall the area was mud covered, feels like Armageddon series?

Due to the expedition dinner in the evening we decided to exit the cave and return in the future to bolt the aven and survey the dry passage.

Paul Dold (Mr. Eddy Sharp Pencil)

2246 '2k of Drafting Cave' 449736/ 4800374 Alt 145m

Paul Dold/ Johnny Latimer 06/08/2011

DAY OFF???? Relax with a beer and a hamper packed with lunch may be a spot of prospectingwhat could possibly go wrong? Just add Bottlebank.

Tony suggested an existing site just off the road in a large steep sided shake hole. The description given by Tony was 'Shake hole full of rubbish, cave entrance leads to narrow rift without draft, needs looking at on warm day'.

Johnny cut his way to the entrance whilst I got an oversuit on, the entrance was open and as per description turned right into a rift passage approximately 4m long, ahead rubbish and boulders block progress but in the floor a hole emitted a very good draught. 'That's a 2k draught' in Johnny's words.

We took turns digging and after about an hour and some Eddy Sharp Pencil acrobatics (Cheers John for the help in beating gravity) we managed to get the hole big enough to slide into. The hole is BEST entered feet first (Trust me) then drop down a 3m snug slot to a rock and mud fill floor with a way on over a bag with bones in? This then drops down about 2m (We used a bar and rope for ease) to table sized boulders where a few options are available to pass them.

Once descended past the boulders a 4m climb required us to reuse the rope as the walls were slippery. From the base of the 4m climb boulders ranging from TV size to loaf of bread are keen to head south and may cause injury CARE! At the base of the two short boulder slopes a stream passage is meet, left and upstream is dry mud floor but downstream is wet and the way we decided to investigate. We scampered down the passage for 10min - 100m-ish then made our way out. The boulder slopes were on the move on the way out and will need engineering before surveying; Neil (Slim) joined us at the top of the 4m climb where we excitedly explained the find.

A return with a small team is planned for tomorrow 07/08/2011.

Paul Dold/ Johnny Latimer/ Jude Latimer/ Neil (Slim) McCallum/ Di Arthurs/ Simon Cornhill
07/08/2011

The day started for Di and me at the Footleg School of surveying where we got a crash course in Disto X recalibration and a top up lesson in the use of the pocket PC. Both of us then went to Agua cave to perform the recalibration whilst the rest of the team headed to the cave armed with tools and ladders to rig the entrance and make areas of the first part of the cave safe.

By the time Di and me got to the cave entrance the others had just finished all their jobs and so we sat hatching a plan for surveying. John and Jude surveyed the dry up stream section whilst Di/ me and Neil surveyed from the entrance to the stream way.

Once at the stream way we all surveyed together making good progress as its hard going because the muddy squalor increases the further you go. Simon joined us and we split the team into two so inlets were ticked off.

190m from cave entrance downstream we stopped surveying at a junction with a draughting inlet/ dry passage and a low slot on the mud floor.

The inlet will require a crowbar to release sandstone rocks blocking the way on and maybe a capping kit to widen the snug parts.

The dry passage has been pushed for about 60m passing another drafting ascending inlet with a small stream issuing from a narrow side alcove. At the end of the passage (Hands and knees crawl on sandy floor) end with the way on plugged with mud and a low continuation on the r/h wall again plugged with mud and no draught.

The low slot on the floor was explored by Slim and was described as wet flat-out bedding with shingle floor. Water can be heard gathering pace in the distance suggesting the passage gets taller? I felt a good draught from this area.

Paul Dold (Mr. Eddy Sharp Pencil)

Mon 15/8

REXADON - SQUIRRELS PASSAGERupert

From point reached on 13/8 laid out 30m of line in a very complex passage formed on a series of x-joints, so lots of right-angled bends, blind alcoves, and pendants hanging from the ceiling. 11m depth reached, at a sandbank where I was unsure of the way on and low on air (still using tanks used to die Bud a Dubs @ Easter) so uneventfully returned.

Tues 16/8

Used a fuller tank I had in reserve.

Continued around a few more bends in a rising passage to where airspace could be heard from -6m depth. Ascending led to a canal over deep water and more bends. No belay could be found, and as the line had not been belayed up/water as well, it had the potential to turn into a right old rat-trap. Will need to return with (i) a lead weight to put on at floor level and maybe (ii) a bolt kit to belay in the canal and (iii) a small manageable reel, not any exploit reel which is made for paying out, not winding in.

Otherwise the return was okay, but I had to wind the reel back on all the way back to my last belay in a silt out. Anyone else who may visit this sump before I do - take care!

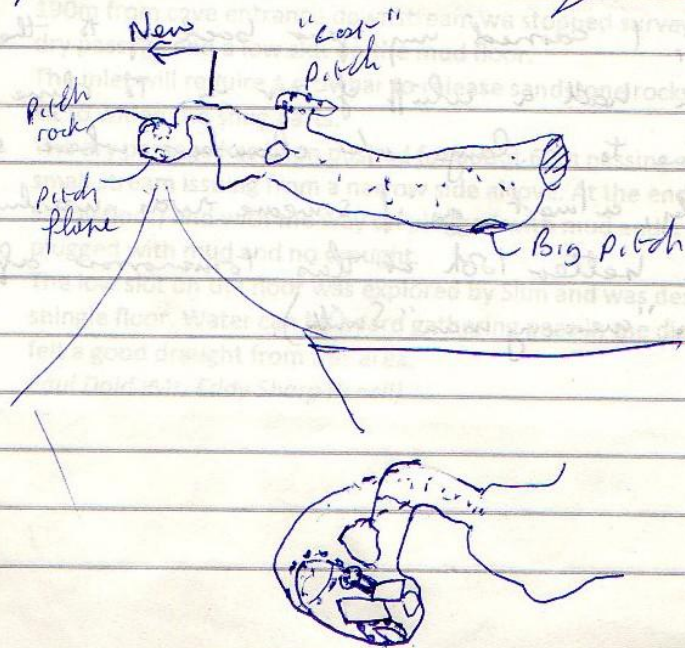
Upstream

Still as keen as ever, I carried my gear back up to the ladder and used the bottles which had a whiff of air in to climb up/streams. Laid 45m of line to a large u/w chamber where strangely the vis went murky + muddy, almost as if someone was washing off upstream ??? Will have a better look at this tomorrow after consulting the Oracle (Pedro "memory man" Smith).

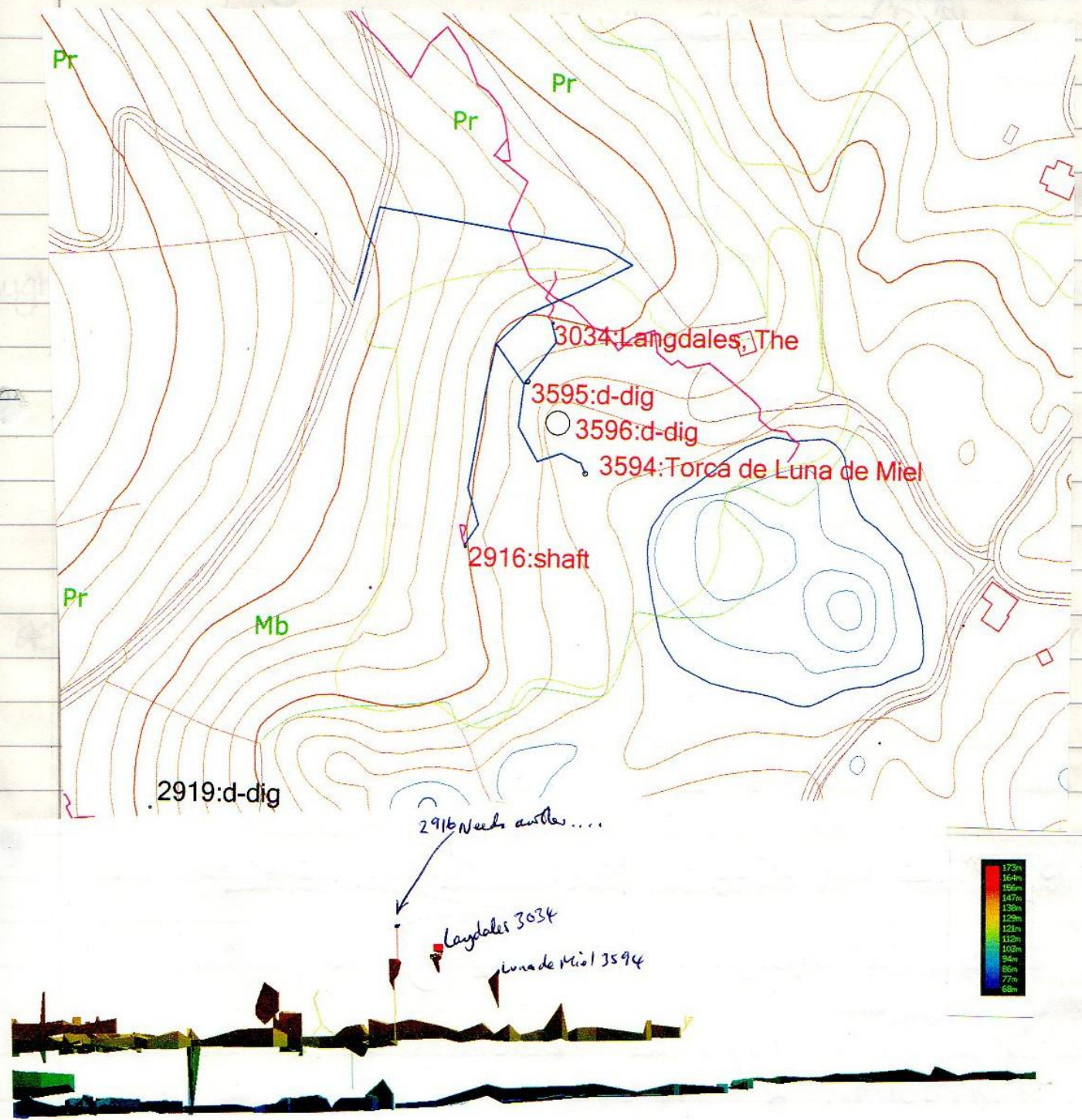
15/3/2011 Pedro; Ali; Phil P Lostrellia (427)

Aim of trip was to de-tackle the cave as gear was left in from summer 2010 & to open up the slot to get access to the chamber seen at the bottom of the "big" pitch. ^{end} Got to cave via ~~the~~ Aliso, but track post farm was too wet to drive but still easier than from bottom. Track down has been opened up, but very muddy, ok for Landrover etc. Found all cave rigged except for entrance ladder - all gear taken out & all was in ok condition.

Used 2 snappers to open up access to slot blasted previously by Carolina & Allen in 2010 also dug out flow, which then collapsed into crawl under the top rift, now can slip to slot standing up! 2 snappers opened up slot to get access not to a chamber but an aven with pitch below (over looks like it connects to passage pitch side of slot), this pitch is 10m+ deep & needs either a rock removing (rope bar lot of effort) or a flake removing using caps. Due to time left this is a going lead.



16/8/11 Surface survey in The Langdales by Ali + Tom + Di
Altered positions shown below



RENTON 17th Aug Rye, Phil Paparet, Pedro, Simon Cornhill, Diane Holmes.

SQUIRRELS PASSAGE AREA

1. Pedro, Simon + Diane surveyed from the main passage to the pitch head, thus filling in the missing blank bit.
2. Phil + Rupert went to the Upstream Sump. Whilst Phil took photos, Rye dived into the sump to yesterdays limit, some 50m in. From here, a large air-surface with above water passage was reached some 10m further on. Convinced this was D. Ryalls "lake with no way on at 300°", Rye carried on and followed an v/w passage for a further 20m to another air-space above. By now I was convinced this was the same as DR's passage, so I returned.

We de-kitted the pitch, RS left in 1 cylinder, lead, 2 reels, fins, a rope and the hanger for the pitch.

Back in the main passage Pedro then showed me both sump pods dived by DR. Apart from the fact there had a line in, they were completely different from where I had surfaced. These, Squirrels v/s sump does not go to these 'static' sumps, and seems to follow a different course, which is very good news.

We then all carried the remaining empties, etc out and had a good trip. Thanks to all who helped!

15-17th August 2011 - 3594 - Honeymoon Pot

Brief description - full story to follow!

Draughting hole at bottom end of the cool depression. 2x through bolts at top, 1 zinc plated + 1 stainless.

Hang ladder down to 1st squeeze at - 9m. Squeeze currently will just about let D3 through.

Below squeeze sit down then feet first through next narrow-ish section into small chamber. (Don't look up at flake above!) Climb down 3m into next small chamber.

Directly below pass feet-first down through another narrowish section and back and foot down rift through ~~the~~ bedding squeeze with slot to pass (R) foot through on the way down on the (R) ~~floor~~

Then down another 3m climb to current end - chamber with muddy / rocky floor and draughting pitch head on (L) (looking down) obstructed by boulder.

* Don't wear your best suit + a thick pair of gloves useful as rock very sharp. Also, lots of loose, friable holes.

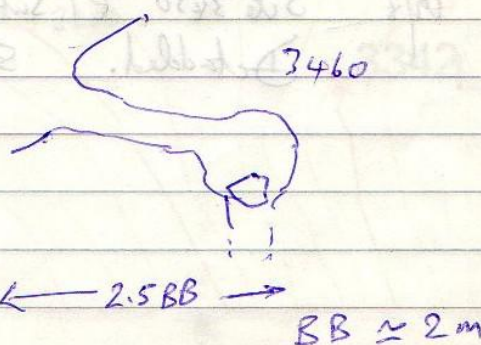
Mrs Dingle ♥ x

16/8/11

Officers' mess area off TV Track

Bottlebank, Nigel, Bill, Len, Dale St digging 3461 and 3460. Bit more dug out of 3461 but no real progress. Draughting - now 3 Bottlebanks long. Dug at 3460 for a time. Opened up with caps and snappers leading to a small chamber that BB could turn round in. Last boulder capped dropped in on top of rift. Currently impenetrable. No draught.

GPS's checked for various holes:



(12)

3462/3 OK

1243 OK

3460 OK

0894

0451496

479 4616

3461

0451485

479 4601

0881

0451448

479 4607

12/8

3564

Team in through Tom's Squeeze. Tony B and Bill B dug hole in floor beyond squeeze - no progress. Nigel D surveyed. Complete or present. A little draught in one passage but otherwise prospects poor.

18/8

Onite to Sala Carballo

Rete S, Nigel D and Tom H in Onite down to passage beyond Sala Carballo. Completed survey beyond stal bridge including forcing Tom through flat-out squeeze over stal (again). No significant finds. 46m surveyed.

20/8/2011

Hi Juan,

Herewith the details of the last holes as promised - found on the 13th August.

1. A row of 4 small holes, some with mud sides at the top, and none deeper than 4 metres, all sited below the rim of a large depression near a barn, and which has a small resurgence (impassable) at the southern side. GPS for centre of row is 0451074.4800173. The first 2 photos show these.

2. A mud slope down alongside a solid wall ends at 4 metres with a dig to a visible space under the wall. No draught on a hot day. GPS 0450404.4799069. The third photo shows this.

Would be grateful for the site numbers you allocate to these for my records in due course. Cheers, Harry

Back again! On checking the details that I sent you I have spotted that the GPS for the middle of the row of 4 holes should, of course, be 0451074.4800173. Also, the GPS for the other hole may be suspect as it was under dense foliage.

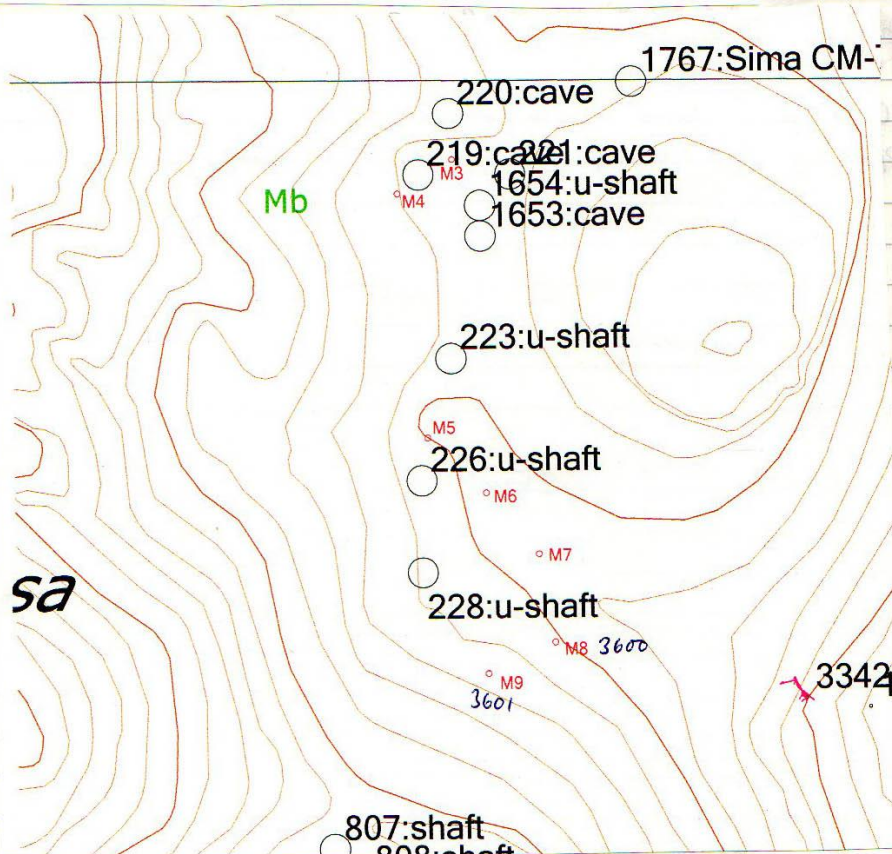
Cheers, Harry

19/8

Site 3450 El Suto. Surveyed dam pitch - batch 11-02
Detached. Steve M. Tony B. Tom H.

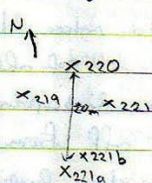
Mullir 9 Aug 11 Peter Smith, Carolina Smith

- M2 455367 4795923 3599 (unlikely to be 845)
Small hole covered by grass, 2m drop to slope down
M3 455211 4795855 = 220
Blind rift
M4 455193 4795844 = 219
Blind rift.
M5 455202 4795764 = 2263
Short scramble down into a blind rift
M6 455221 4795746 = 226
Scramble into large depression with big ash tree. A 1m drop into a rift on one side.
M7 455238 4795726 = 228
1.5m diameter hole with ash tree. Estimated 5m depth. = 228
M8 455243 4795697 * 3600
Shaft. Estimated depth 10m.
M9 455221 4795687 * 3601
Walk into a depression with a 2m drop in one corner. * 3601



13/4/61 Went exploring over Meula. Nick. Seaton. Jack

Shafts 219, 220 and 221 appear to be blind rifts at the bottom of the shakeholes, can't even get into the rifts.



1683
221a is a 1m drop into a tight heading rift which descends for about 5m to where it becomes tight. Rift descends at 5° on a bearing of cross-section 083°.

22.13. Pitch into rift, were bolting top when
(1654) a scrub fire on the back of the mountain
caused us to abandon it

From: harry long <strans@hotmail.co.uk>
To: uzueka <uzueka@aol.com>
Subject: RE: Matienzo
Date: Sun, 21 Aug 2011 17:21

Thanks Juan.

to 3581

The second entrance was dug in the last day or so and was located part way up the slope in an adjacent depression to the one with 3581. Originally, it was thought this second spot might go into a new cave - wrong! My excuse is that I wasn't there!

If you wind up with no description from anyone else - possibly John or Andy Latimer - I could cobble the odd sentence together for you.

Cheers, Harry

Several visits during August to dig at Feldesuto

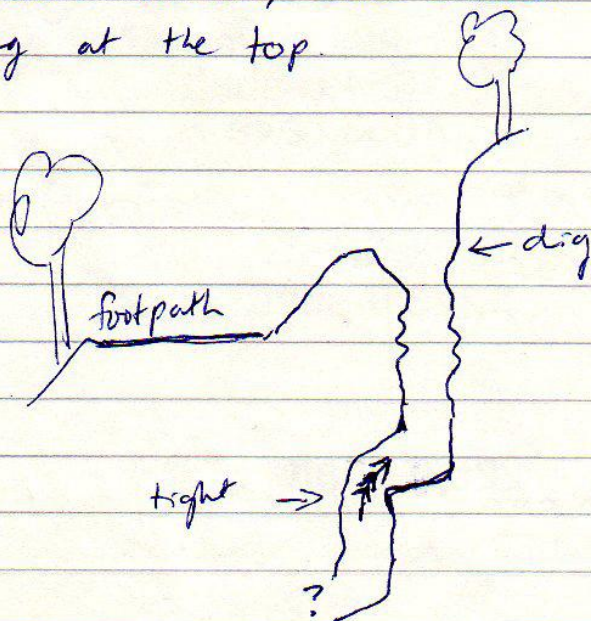
3563

GPS'ed twice : 448571 4794903

and 448573 4794915

Diggers: Joe, Steve and Pete S.

The entrance has now been enlarged to a tight 10 ft climb down, with another 6 ft slot which needs opening at the top. Draughts out.



Mols. 727

(65)

Tuesday 23rd August Steve M., Simon + Di carry in

Wednesday 24th Chris + Arthur dive passing Rupert's limit
and descending to -9 before
rising to - . Passage continues.

Thursday 25th C + A. More gear in.

(Saturday 27th. Equipment removed by Chris + Arthur + Jim D; Joan; Kate S;
Ian + John Dickinson + Andy Quinn)

Friday 26th Dive by Chris + Arthur. Down to -93 then up to -12m
Ran out of line

Tuesday 9th August. Riano: Badger, Tackleberry, Ben & Lucy

Objectives: to look at passage to left of the Acid Bath, & and to re look for Lank's pitch upstream of second river inlet.

After a casual trip to reach the Acid Bath area, we split into to 2's,
Tackleberry & Ben went to look for the pitch upstream of second river inlet, after not being able to find it last year, see separate report from them
Badger & Lucy, we went up the passage right of the Acid Bath, this show promise as on survey splits into two, the left hand passage heading towards Quadraphenia passage, Uzueka, and within 100 metres, after fairly easy going along the start of the passage we came to an awkward climb down on very jagged sharp rock, I climbed down leaving Lucy first I went along the right hand passage which although on the horizontal had to negotiate up and down, the passage was well decorated, and ended in a calcite slope and blocked, there where several avens to the side of the passages which in time would be looked up/down, however further exploration should possibly kept to a minimum due to the formations and consideration I would say to the potential of the avens, most which have been looked in in this part of the system are all blind leads. Back at the climb down there is a passage of to the left at floor level, this went through into a very sandy horizontal crawl which meandered a lot, after a while the crawl split, with a branch going left and behind the way I was heading, after another 10 minutes the passage became tighter, and being on my own decided to not push any further, the passage has previously been entered although I am not sure at what point the survey ends, so this might not have been drawn or surveyed. On the way back I ignored the passage now on the right, a bit further back there was another passage on the right, on the survey just shown as a branch and question mark, proceed down this passage and beyond where previous footprints ended, this then came to a T junction from right to left, I turned right, this went back to the passage originally crawled along, I did not head back down the passage as firstly had been gone for some time from Lucy, but also I believe the passage will eventually end back in the main passage, and obviously this does need to be confirmed but as we had not got a survey kit with us decided it might as well be survey at the same time as we push it. Reasons I believe this passage links back to the main passage, the look and feel of the passage looks the same as the one which enters the main passage, I think it will be at the same level, and the passage probably in wet periods takes a small stream. Potential for the passage into Uzueka is still good and if it blocks believe it would be easy digging as filled with sand from the Riano side.

From: guy simonnot <guy.simonnot@wanadoo.fr>

To: Juan Corrin <uzueka@aol.com>

Subject: Re: Cueva Molino Bustablado

Date: Thu, 1 Sep 2011 14:50

Attachments: Orcones.gif (111K)

Juan Corrin a écrit :

> Hi Guy

>

> In the last few days two divers have dived in Cueva Molino. They
> passed Rupert Skorupka's limit and went down to -93m before rising to
> -12m. About 500m extra have been added to Rupert's survey.

> I'm very happy to send you the data (line survey, map and section of
> the caves, etc) but would like some information about Orcones and the
> dives that have occurred this summer. (A centre line map or SurveX
> file would be very welcome).

> I'm packing up at the moment to go back to England but will be back
> online on Wednesday.

> I hope you had a successful summer.

> Cheers

>

> Juan

>

> Juan Corrin

> UK : 01706 874669

> Spain : 0034 942 619931

> Mobile UK : 07815 745072

> Mobile Spain: 0034 649642823

> Skype : juanpennycorrin

Bonjour Juan

Tout d'abord félicitations aux plongeurs pour cette belle exploration
Côté Orcones deux plongeurs (Emmanuel Tessane et Yann Tual) ont
poursuivi les investigations

En amont (amont 2) seuls 30 m supplémentaires ont pu être parcourus dans
le S5 (laminoir large mais bas). Le secteur est à revoir cependant

En aval la plongée du grand siphon (-30 au point bas) s'est poursuivie
jusqu'à 465 m (sortie dans une cloche d'air) Au delà le siphon (diamètre
5 à 6 m) repart mais faute de fil ...

A 440 m les deux ont trouvé une galerie exondée qu'ils ont remontée sur
220 m (petit filet d'eau).

Dès que j'ai le filaire topo je te le communique. En attendant je
t'envoie la topo de l'année passée (erreur sur la cote finale par
rapport à l'entrée -60 et non -43)

Sinon parmi nos recherches le fait principal a été de retrouver dans la
torca del Pasillo (plus de 3 km -275) le petit collecteur en aval de la
torca de Cantu Encaramao. Bustablado se rapproche !!

A bientôt

guy

From: Alasdair Neill <alasdairneill@yahoo.co.uk>

To: Peter Eagan <peagan@hotmail.co.uk>

CC: Juan <juancorin@matienzo.org.uk>

Subject: Re: Espada

Date: Tue, 6 Sep 2011 10:20

Morenuca all happened before I got there. The closest point in Picon seems to be some pitches I dug into with Bob Cawthorne years ago, ended at a too tight slot with I think a good draft which might go with snappers, Tried to get a trip to look again this summer. Mandy (who found the extension in Morenuca) couldn't get through the slot. DCC looked at it also some years ago & decided it wasn't feasible to cap it. If it could be opened I would imagine it would be easiest way into far end of Morenuca, if there's anything left to do there.

From: Footleg <drfootleg@gmail.com>
To: Juan Corrin <uzueka@aol.com>
Subject: Re: Summer 2011
Date: Tue, 6 Sep 2011 17:41

Interesting! I think you only sent me the first account last time, or maybe I just read it too late at night and can't remember the details. Anyway, the Inlet is definitely called Sloppy Inlet. I think Paul just could not remember what we called it and so used a descriptive name 'tube inlet' in order that I knew where he was talking about. I was on the trip when he and Slim bolted up there (photographing the Astradome), so I can be 100% certain I know where they are talking about. I had not previously realised they had left passage unsurveyed. It most likely drops into the older Diversion Chamber inlet which perfectly matches their description, and is only 60m away or less. I'll look forward to them closing the loop back to the caim in Diversion Chamber where we started the survey from last year. Armageddon Bypass is over 400m away in a straight line, and the Astradome is in the way so they did not drop into that.

Footleg

On 6 September 2011 15:59, Juan Corrin <uzueka@aol.com> wrote:
 Hi Paul

Eddie SP's accounts attached - he's calling the inlet "Tube Inlet" - should I change logbook accounts and the website article to Sloppy Inlet? Are you sure he's in the same place ? 😊

I'll add the 100m to the 110m in Hoyuca.

Cheers

Juan

Juan Corrin
 UK : 01706 874669
 Spain : 0034 942 619931
 Mobile UK : 07815 745072
 Mobile Spain: 0034 649642823
 Skype : juanpennycorin

—Original Message—

From: Footleg <drfootleg@gmail.com>
To: Juan <juancorin@matienzo.org.uk>
Sent: Tue, 6 Sep 2011 11:46
Subject: Re: Summer 2011

Hi Juan,

Intrigued by the sentence 'Two hundred metres of new passage were also entered off this inlet which seems to drop into the Armageddon Bypass.' Just after the mention of Paul Dold and Slim's extensions to Sloppy Inlet (which is incorrectly referred to as Tube Inlet in your account). Can you give me more detail about what this 200m refers to? I was not aware of anything linking into the Armageddon Bypass, which is over 400m away from Diversion Chamber.

Note that we also surveyed exactly 100m of new passage in another inlet off La Playa. I am not aware of having sent you that figure previously, so I guessing this is in addition to the 110m you listed for Paul Dold's extension to Sloppy Inlet.

Footleg

I was playing with the magnetic declination calculator:
<http://www.ngdc.noaa.gov/geomagmodels/struts/calcDeclination>

It given the declination for this Summer as 1.75 as you told me to use for Matienzo. But my understanding is that this is the declination to correct magnetic bearings to grid North for the WSG84 Lat Lon grid. Unfortunately we use the UTM Eur79 grid for all our mapping, and this has a different grid North. So I have done some investigation to determine the difference this makes. It will affect the positioning of any stations with respect to fixed points on our surveys. I generated coordinates for two fixed points which have exactly the same longitude, but latitudes which put them approximately at the Carcavuezo entrance and Torno entrance respectively. Converting these coordinates to UTM Eur79 puts the northerly point 25 metres further East than the southerly point. In other words over the connection distances typical for the larger systems the maximum error is 25 metres. Interestingly that is about the error in the linked ends of Lluvea and Uzueka, but that may just be coincidence!

So the declination values we use need to have an additional correction of 0.4 added to them to convert magnetic bearings to UTM Eur79 grid bearings. The test survey file below simulates a survey leg already aligned to WGS84 grid North, and then applies the correction to align it perfectly grid N on the UTM grid. This matches nicely with the empirical correction I have had to do to align Matienzo UTM grid maps to the Googlemap grid, as I rotate them by 0.4 degrees in photoshop to get them to fit!

So in summary we should be using a declination of $1.75 + 0.4 = 2.15$

Of course all prior years data will need correcting too! I don't know how we calculated declination in the past, but I have a figure of 6.05 used for some 1986 data in Riano. But by my calculation we should be using 5.5 for that Summer to align these bearings on the UTM Eur79 grid.

Footleg

*begin GridTest

;Test file to check correction of WSG84 grid to UTM Eur79 Grid

;Create two fixed points directly north/south of each other on the WSG84 lat/lon grid

*FIX S 453081 4797835 0 ;43.3300 -3.5800

*FIX N 453106 4801444 0 ;43.3625 -3.5800

;Now create a survey leg between these fixed points using a compass bearing

;and apply a declination correction to make this leg directly north on the UTM grid we use.

*CALIBRATE declination 0.397

*equate S 1

1 2 3609 0.397 0

*end GridTest

MATIENZO CAVES PROJECT