

# LOGBOOK

Year: 2011

Season: autumn

Logbook pages scanned to jpg then combined into a pdf file using <http://smallpdf.com/>

*Juan Corrin, January 2015*



Autumn 2011

W

(1)

Friday 30th Sept Phil P + Juan to Honeycomb Pot, site 3594. Phil drilling and snapping at first light bit at base of entrance ladder to make easier access. This was successful. Juan then down to take rubble from Phil now 2m below the base of ladder. When PP tries to remove <sup>wedged</sup> material ~~under~~ the block on which Juan was sitting drops an inch or so. Phil climbed up past the 2nd loose flake. This section of the pot needs the ~~next~~ rubble on the flake removing and the flake blowing up.

Sunday 2nd Oct Phil + Big Steve to site 3563 - dig below Reguilon. See later entry.

2/10/11 Data received from Enrique re Torca CEZ (via Peter). Now in computer 3603

From: Peter Smith <smith\_peter2004@yahoo.es>  
To: Corrin Juan <uzajeka@aol.com>  
Subject: Rv. Riva-Ogarrio-2011  
Date: Tue, 4 Oct 2011 13:54

Hi Juan

Forwarding Enrique's reply. He checked the data at home and there was a mistake in leg 55-56, which should be on a bearing of 20°. But that might not change very much. And you can see that there's no problem about visiting the cave, at the end he gives a description of the route.

— Mensaje reenviado —

De: 16000- SP Enrique Valero Moscardó <envamo@cruzroja.es>  
Para: Peter Smith <smith\_peter2004@yahoo.es>  
Enviado: martes 4 de octubre de 2011 9:09  
Asunto: RE: Riva-Ogarrio-2011

Hola Peter y Juan,

¡Vaya!, que bien, al parecer deberemos revisar algo por ese punto que tanto se acerca a las galerías grandes del Coverón. Anoche miré los datos de las estaciones topográficas y es cierto, en la tomada desde 55-56 = 4m. la dirección no es 100° sino 20°, y después de la "llegada al Soplador de 2011" (el cual ha sido abierto este año) habría otra tirada de cinco metros a 330° hasta un punto impracticable (aquí siempre nos parecía oír el río, aunque tal vez fuera el propio aire fuerte)

En cuanto al desnivel, no hay ninguno con seguridad. Es decir, lo que bajamos en la entrada pronto lo recupera la cavidad y asciende muy levemente manteniendo la cota de la propia entrada. Quizá al final tengamos que restar cinco metros al tener que descender otro pocillo soplador. En este punto fue cuando Soriano tuvo el accidente con los microexplosivos y tuvimos que salir de pira. En realidad allí fue por donde atacamos al principio, hay galerías estrechas y altas, pocillos estrechos con corriente, etc... pero no conseguimos continuar. En fin, un paso más para lograr la unión, muchas gracias y continuaremos.

Saludos  
Enrique

PD: En la cavidad, una vez descendidos los dos pocillos de entrada se prosigue siempre por lo más evidente: llegada a la Ventana del Paraíso (pequeño trepe), Sala, Paso Soplador (muy fácil-que desciende por escalera de gour hasta la entrada del Tunel-72) El Tunel ...todo pa'lante, bifurcación con bonitas coladas (tomar a dcha y CEZ (pintada) Columna blanca para adentro por lo grande, (a dcha. LA Capilla) continuar ya Por Galería Principal, siempre la mayor..... se alcanza una reducción y lugar de varias ramificaciones iguales. Tomar la primera a la derecha (de pie) gira y pronto mejora, formaciones hasta llegar a Sala del Denumbe y Los Pelos Rojos.

"Translation"  
over →



2

Hi Peter and John,  
Wow, that well, apparently we should review something at that point that both approaches Coverón large galleries. Last night I looked at the topography station data and it is true, taken from the 55-56 = 4m. the address is 100 ° but 20 °, and after the "arrival Blower 2011" (which has been opened this year) would be another run of five meters to 330 ° to a point impracticable (here always seemed to hear the river, although maybe it was the very strong wind)

As for the gap, there is none for sure. I.e., I or getting off at the entrance to the cavity soon recovers and rises very slightly while maintaining the elevation of the entry itself. Perhaps in the end we have to subtract five meters have to drop another well blower. At this point it was when Soriano had the accident with microexplosivos and had to leave the pyre. In reality there was where the first attack, there are galleries narrow and tall, narrow wells with power, etc. ... but could not continue. Finally, one more step to achieve union, thank you very much and will continue.

S avalanches  
E nrique

PS: In the cavity, once the two wells descended input always goes the obvious: get to the window of Paradise (small climb), Living Room, Step blower (easy-to step down to the entrance gour Tunnel-72) The Tunnel ... all pa'lante, fork with nice cast (take to right and CEZ (painted) white column to the inside at large, (to right. The Chapel) continue and Main Gallery, always ..... the greatest reduction is achieved instead of several branches and the same. Take the first right (standing) and soon turns improvement, training up to the room collapsed and the Red Hair.

Hi Juan,

I made use of a transatlantic flight to sort out all the survey data from the Summer. Updated master files attached plus bitmaps of the sketches for the archive. New length of the 4 Valleys system is 54,554m

I'm not sure what system you have in place for capturing DistoX survey data files, but we need to be careful to capture the original data files for all these DistoX surveys so that they do not get lost.

You can see for the short distance we resurveyed along La Playa in Uzueka that our survey trends in a noticeably different direction to the current reconstructed legs taken off one of the old paper surveys.

I've not made any adjustments to the declinations yet, pending a conclusion to the discussion on the correction to grid north which I emailed you about before. It is interesting to note that both the resurvey trips we did in Riano (around Pendant Chamber) and in Uzueka (in La Playa) resulted in data which trended in a noticeably different direction to the original data for these areas. The Riano phreatic stuff downstream of the Tomo Inlet junction however was quite close to the original data for this passage (we only resurveyed this as no sketches can be found). So I am happy we had the DistoX well calibrated. But either the compass used for the other older surveys, or the declination adjustment appear to be out in the other areas.

Footleg

**From:** guysimonnot <guy.simonnot@wanadoo.fr>

**To:** juan corrin <juancorin@matienzo.org.uk>; Juan Corrin <uzueka@aol.com>; peter Smith <smith\_peter2004@yahoo.es>

**Subject:** orcones-molino

**Date:** Sun, 9 Oct 2011 19:14

**Attachments:** Orcones-Molino\_2.pdf (910K)

En retour de l'envoi de juan je joins un plan avec dessus une topo du sumidero de orcones. nos plongeurs sont en train de corriger une petite erreur sur la topo détaillée mais ça ne devrait pas modifier l'aspect général.

Il semble désormais qu'une relation entre les deux cavités prenne corps. Du point de vue hydrologique quand on ajoute le débit de la perte à orcones + le débit du collecteur Pasillo-Cantu Encarnado cela fait déjà une bonne partie de l'eau du Molino.

Pour des cavités comme la vallina il faudra peut-être penser à une autre source ? (ce qui géologiquement me conviendrait mieux)

Je pense que nous pourrons en reparler

Amicalement

Guy

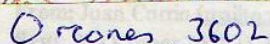
727  
3602



(3)

733

Guy



Molina 727

3604 ✓

EWS 79 452800 4801593 7165

Spain: 0034 942 619891

Mobile UK: 07815 745072

Skype: mandenycnig

---



Juan

I forgot to send you the pictures of the dig I went to with Steve, on the old track below the Judge's house i.e. to the NW or 2743. my GPS was 287m (which is too low by some 40m!) and 448575/4794918

2 October - Sel de Suto - Big Steve, Phil Papard - dig next to old track to Judge's house to just north of open field where sink 2743 is.  
This dig was dug by Steve and Pedro in the Summer and Pedro managed to get down some 6m to boulder floor and hole down, but entrance was tight. Phil and Steve spent some time drilling and enlarging hole using snappers and caps, some problems as one snapper seem to fail (fuse head went off but no effect). Managed to get entrance large enough to get down and for digging bucket. Steve dug some boulders out of floor above hole down establishing it a possible dig, but needs better bucket (handled liquid container type) rather than Big Mat concrete bucket, and pulley on back wall to give straight lift. Phil had a look and dropped down hole at bottom only to find it was hard to get out (hence why Steve and Pedro did not try!) and impossible to dig - "like taking the top off a pillar box and dropping in, no room to bend down to dig). Good draught out, worth further dig with snappers, pulley fixed to back wall and better bucket.

Phil & Hilary Papard

3563

Hi Juan,

Just having a read of the El Suto description, and didn't realise you hadn't got the latest position. I'll chase Tom as well as you don't seem to have the final survey details from the last trip?

From Phil and Alf's description "In the other direction from the base of the 15m climb leads to access along a traversable rift to the big shaft and the main draft"

Should read

In the other direction from the base of the 18m pitch a short climb down leads to the start of a traversable rift. A hole to the right at this point is a dog leg leading to a parallel rift which, after 10m or so, gets too wide to traverse and was disto pinged to 12m depth. There is a continuation beyond this which appears to lead to a further shaft which is undescended. This does not appear to connect back to the parallel rift or shafts and needs a short traverse line rigging to see if it opens out or continues.

Continuing across the traversable rift a bridge is reached from where a series of three Y hangs lead to the top of the 13m third pitch, which lands on a ledge which is the start of the fourth pitch, again 13m. The landing leads immediately to the fifth pitch which pinches in to a small rift in the floor and has been distoed to 24m.

At the top of the fifth pitch it's possible to look along and down the rift to a ledge below in an undescended parallel shaft, which has also been distoed to 24m. Stones thrown at this ledge continue dropping beyond the ledge for some distance. It appears that this shaft can be reached by descending the fifth pitch part way and then a traverse would need to be rigged.

The lowest point shown on the current survey (24/10/2011) - point 15 - is the top of the fifth pitch, at -64m. Adding 24m for the fifth pitch takes the cave to -88m - or 70m altitude and as stones are dropping below this level it would appear that the cave is dropping to around 60m altitude or lower. Assuming that Aguanaz is the nearest resurgence at 78m (is this correct?) I feel that, particularly should there be any horizontal development, El Suto could be significant in that it could be potentially give us access to a new system to the North West of Aguanaz?

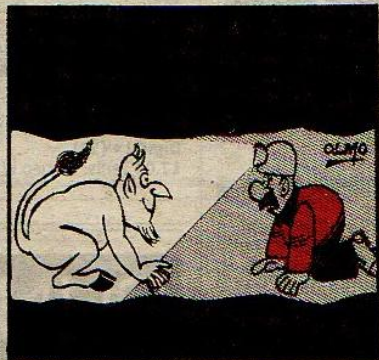
Juan, the last paragraph is my own speculation, feel free to ignore it or correct it if you prefer, as I may well have misunderstood the survey etc. I suppose what I'm trying to say is it needs finishing and surveying properly!

Thanks,

Tony

Tony Brocklebank





#3234 October 13th, 14th, 15th, 17th, 2011 Peter Fast, Torben Redder

Finish climb up 32m aven at northern end of "Wide open". Instead of finishing at the slope the climb is pushed about 5m up and up over 1.5m sediment slope. There is one rebelay (3m below top of climb) with rubpoint (currently protected by tacklebag). Next team can finish the 8mm hole abot 0.5m left of the rebelay to get a rebelay without rubpoint.

At top of climb traverse with total of about 7 bolts leads across unstable slope. Everything made unstable on the traverse will go down the shaft, which makes it a bit dangerous. After the traverse climb up through the slot and follow "High way" with broken down rock on the floor. Draught towards you on a hot day. This leads to "The cross roads shaft". The rock in the walls is very bad for bolts, but the roof comers are good. 4 bolts put in row over about 6 meters in the NE side of wall, last bolt just behind blocks as the slope starts. One more bolt just over the edge to a 20m free hang.

There are more ways on from "Cross roads shaft" :

Start about 4 meters off the floor on the pitch. "Eastern wing" is reached by "Line of fire traverse" (6 bolts) and 3m climb (1 bolt) to anchor in passage (2 bolts). Good draught towards you. The boulder choke at the end is very solid at the top. It seems possible to climb down into it, but not really safe. There are undescended pitches p14 and p15 close to the choke.

N of "Cross roads shaft" c-3 (recommended to use rope) and p6 leads to a 6m diameter chamber with several ways on, sometimes a bit muddy. There are a lot of unpushed passages.

NW of "Cross roads shaft" climbs may lead into tubes and horisontal passage.

### October 16th and 18th, 2011

Peter Fast, Louise Korsgaard, Karen Korsgaard Redder (22 months), Marie Korsgaard Redder (8 months), Torben Redder

Family day up the new pylone track.  
Possible new caves:

#### Cave 1

Pictures: 3165, 3166

GPS: N 4796847

E 0455283

Elevation: 513m

Located just 3m to the right going up the road. Seems like the road should have passed just over the cave and the cave was opened by the road workers. This cave was entered october 18th. The cave draughts in om warm day. P4 leads to chamber about 8m across. 2 bolts put for p5. Leads to chamber about 1,5m high and Ø8m? with a lot of stalls and straws, one straw about 1m just touching the floor. Footprints from other visitor seen in the soft mudd. Could be way on between stalls. Climb down p4 leads to Ø20cm hole that draughts in. May fairly easy be opened up.

#### Cave 2

Pictures: 3188

GPS: N 4796701

E 0455371

Elevation: 583m

Just at the side of the road

#### Cave 3

Pictures: 3189, 3191

GPS: N 4796719

E 0455489

Elevation: 567m

Just at the side of the road. "AA76" written on wall above entrance.

Torben Redder

3392

(old number re-used)

3145

photo

3439

(old number re-used)

3504



25th October 2011 Tuesday

Juan + Pete walked up from the end of the road beyond Vallina to the shakehole, just on the Mabinza side of the ridge containing sites 3167 and 3255.

On the way had a look in large, open entrance of "unexplored" 1147. This turned out to be 25m long, walking size "tunnel" to a chlo at the back on the left and ~~walk~~ wall/shelved rocks at floor level. May be worth having a dig. Seems an obvious, south facing archaeological site.

First surveyed site 3255 - mainly H+K crawling. Then surveyed 3167 - again mainly H+K. Ends at a noisy draughting boulder choke - which should be locatable on the surface (Arredondo side) - as daylight (faint) could be seen.

Near the entrance is a large buried pottery object which will be investigated on Saturday. Photos + video taken.

Photos from Campo. (76). + Agua (59)

From: Peter Smith <smith\_peter2004@yahoo.es>

To: Corrin Juan <uzueka@aol.com>

Subject: 3167

Date: Sun, 30 Oct 2011 11:51

29/10/11

Hi Juan

Just to let you know that yesterday was quite successful, everything went well, beautiful weather again, and we collected all the pottery. The surprise was that what was sticking out of the floor wasn't the bottom part of the pot, but the top, it was upside down! So scope for theories bullshit etc!

That meant nearly all the rim has been preserved, which is the best decorated part of the pot. At the moment the couple of archaeologists who are working with us, and are members of the Aranzadi society in San Sebastian, have taken all the bits because they have facilities for washing and cleaning them.

I've come to Santander so not downloaded photos yet. In any case it was very difficult to take vertical photos above that main area, hardly enough room to fit everything in.

Cheers for now,

Pete



31/10/2011

Re: Report and permission

**From:** Peter Smith <smith\_peter2004@yahoo.es>

**To:** Juan Corrin <uzueka@aol.com>

**Subject:** Re: Report and permission

**Date:** Mon, 31 Oct 2011 13:04

**Attachments:** 100\_2000.JPG (1930K)

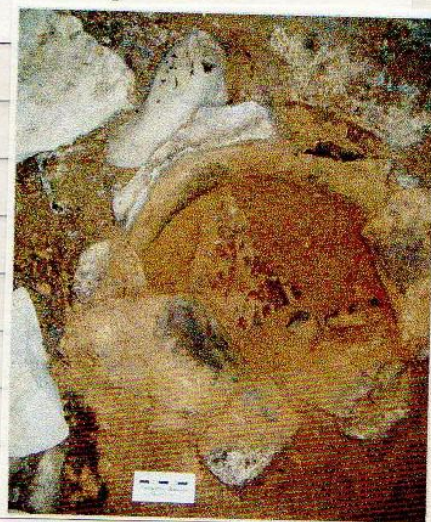
Hi Juan

Thanks for that. Looking forward to seeing the final version of the report.

Here's a photo from Saturday. Like most of them, somewhat out of focus. With one of the last fragments in the middle (there were about four layers of them) and the ring of the upside down rim. We didn't find any of the base. So my theory is that the pot was already broken, so it was turned upside down as that was how it would be most stable. But why would they want to have an upside down broken pot in a cave?

Cheers

Hi Juan,  
That's excellent. In fact I'm afraid we finished with some bull-shit attempts at video the other day. With the very limited available light - so the darkness adds to the mystery! But it's a very big file to send you. Also the others did photos that will almost certainly be better quality than mine. The surveys are also very good. I have to go back to the cave, there are also some things we need to check, so I can take the surveys and add details to them if necessary. I don't think they looked at 1147. I'd seen on Sigpac that the best route from the top of that valley with the fence was to go further towards Matienzo, so they never saw the entrance. I didn't get the chance to look for the second entrance to 3167 either. Another reason for going back up there.  
Cheers  
Pete



3167  
3255

**De:** Juan Corrin <uzueka@aol.com>

**Para:** smith\_peter2004@yahoo.es

**Enviado:** lunes 31 de octubre de 2011 22:51

**Asunto:** Matienzo sites 3167 3255

Just put together a bit of video which is just available to you and me at moment

<http://www.youtube.com/watch?v=tk-BItvkUBo>

When more results come in, I can add more pictures etc to finish it off. Penny was impressed with the pottery!

Cheers

Juan

between the junction with the entrance inlet and the Torno Inlet junction. Peter said that they had seen the pictures he wanted, we continued to the junction where Torno Inlet joins the main stream, and set about investigating and resurveying the higher level fossil phreatic passages which we had partly resurveyed a couple of days ago. First we looked at the loop going off at the top of the climb down into Torno Inlet because



**FEBRUARY 2010**

**Uzueka - Video Trip and Investigations Above Pigs Trotter Chamber  
Fri. 19th Feb. 2010**

Participants: Paul 'Footleg' Fretwell, Paul 'Eddy Sharp-Pencil' Dold, Alistair 'Tackleberry' Smith

Four days caving in Matienzo, so where to start? We wanted to avoid anything too serious and committing without the backup of a full expedition, and following a late night of wine and cognac at Big Steve's we were not all that quick to get organised in the morning. So after a leisurely breakfast, fixing Phil Papard's wireless internet and a run to get supplies for the next few days, we settled on an easy trip down Uzueka. The plan was to get some practice with the video camera and visit some parts which Footleg has been drawing up on the survey for the past year but had never actually visited himself. Having only ever been in the usual field entrance, we decided to have a look in the Church entrance instead. Previous reports of liquid cow slurry were balanced against Lank's report from last year that it was hardened mud which did not liquefy when a couple of them crawled over it.

We parked near the entrance and headed in. The survey proved to be a good match for the passages we found, but there was a fair bit of hands and knees in a streamway before we reached the cow slurry section. Faced with a hands and knees crawl through what looked very like the Valley Entrance duck, but with a good 6 inches of gooey mud under the water of questionable biological content, we decided to find an alternative route.

Seeing as we were close to the field corner entrance no.1 we thought we could just nip out that way, and back in the usual field no.2 entrance. Footleg had heard the no.1 entrance was a bit tight, but found this to be an understatement! Faced with a very tight vertical squeeze to get up through boulders into the bottom of the shakehole we abandoned that plan, and returned out of the Church entrance to make our way to the usual field entrance no.2 via a more sensible over land route.

Making our way in for a second time, we encountered a large brown furred bat with dark almost black wings hanging from the ceiling in the flowstone filled chamber shortly inside the cave. We made quick progress though the crawls to the slot squeeze up into Quadraphenia which Footleg wanted to try recording some video of. So Alistair and Eddy were inserted into the squeeze for his filming pleasure. Eddy was in the squeeze with his feet flapping about in what looked like a very tight slot. Footleg was thinking how good it looked on the camera. Eddy was trying to push his bag (containing his recently purchased digital SLR camera and spare lens, flashes and other expensive kit) in front of him. He called back that it was proving hard to get the bag to fit through the tightest bit, but then with a shove it dropped through into larger space beyond. Eddy then commented that he didn't think he could fit through himself! We had been through this way before, and it suddenly dawned on us that maybe we were in the wrong squeeze! Sure enough, a very similar looking squeeze was located a little further along the passage. We just hoped that the camera bag could be found from the other side, because none of us would be able to easily extract it from where it had now been pushed! The alternative squeeze proved a lot easier, and still looked good on camera. Eddy went through first, and round the corner in Quadraphenia he found his bag sitting in the passage next to a ridiculously tight slot in the wall. Footleg filmed Eddy and Alistair going into and coming out of the squeeze from all possible angles, and then Eddy took some photos of Alistair with his camera too.

Finally we set off along the increasingly impressive large passages of Quadraphenia filming along the way. Another smaller bat was discovered just hanging from the wall in Quadraphenia at about face height. With enough camera practice done we packed all the camera kit away and continued on to Pigs Trotter Chamber where we started to explore the passages Footleg had been drawing since last Easter but had never visited.

The first question in this area was the two 13m pitches down at the end of passages very close to each other. Previously thought to be the top and bottom of the same pitch, it appeared from the recent resurvey effort by Ali Neill that these were in fact both pitches down. But where to? The cave description described one of them as dropping into known passage, but no survey data could be found for the passages at the base of the pitch. We found our way up into the passage named as Wardrobe Passage on an old scale sketch of Lank's and followed this to the pitch at the end. The pitch was into a continuing high canyon passage, so it was clear that the other pitch could well drop into the same place. Heading back to Pigs Trotter we noticed a formation matching the description given in log book write up from 15th July 1975. It looks like a fairground carousel and they named the passage Carousel Passage. So that was another question answered. It raises the new question of why the name Wardrobe Passage was written on the survey notes for this passage dating from August 1989. Interestingly the pitch down at the end is labelled on the 1989 sketch as leading into Juan's

stuff off Flashbulb Hall. But what happened to the survey here? Back at the start of this passage near the climb down into Pigs Trotter we had a quick look at an unsurveyed passage marked on the sketches as leading to a traverse. This looks like a good prospect for finding more cave, but definitely needs protecting with bolts as the walls are smooth and vertical over a substantial drop.



Back down to Pigs Trotter and a quick bit of resketching the climbs up, before heading up to Flashbulb Hall to investigate the other 13m pitch down in the God Knows series. This was found without too much trouble, and we could see it dropped into the same passage as the other pitch. From here we sent Eddy and Alistair prospecting down a series of climbs which needed resurveying while Footleg set about recalibrating the DistoX. But the time this was done, the others had confirmed that they had found the way to the bottom of the pitch, so we set about surveying down the climbs. Time ran out on us before we could complete the survey here, but at least we know what ties into what now. We plan to return and complete this bit of the resurvey in the summer. So packing up the kit we made a quick return to the entrance, stopping briefly to record a video clip of the large bat near the entrance so we can try and identify it later (people seeing the photo later identified it as a Greater Horseshoe bat). Out into a surprisingly mild night and back to the car in good time for our chicken dinner appointment at the Bakers bar.

**Riaño - Exploration of passages found last year in roof of entrance series passage**  
**Sat. 20th Feb. 2010**

Participants: Paul 'Footleg' Fretwell, Paul Dold, Alistair 'Tackleberry' Smith

The purpose of this trip was to complete the survey of new passages discovered by Paul Dold and partially explored with Nick Fincham last year about half way along the Riaño entrance passage. The way into this series of passages is at the point where you first have to clamber over some boulders and leave the streamway for a short section. At this point you can climb up into the roof where a number of choked passages go a short distance, and one crawl with some stalactites at the start and a good draught leads into the extensions. This crawl soon becomes a flat out bedding crawl, and Footleg had a 'moment' when he tried to squeeze through. Some excavation of the floor by Alistair, followed by some more excavation by Footleg as he made another attempt added a good couple of inches of height to the crawl and we all arrived on the other side. We continued through mostly crawling size passage and low wide chambers to the furthest point from last year's survey. From here it was immediately obvious that the final chamber was in fact an ongoing passage which we surveyed to a point where it was too low and further digging was required.

Returning to the entry point into this passage we looked at the stals blocking the way in the opposite direction and concluded that this continued as well. So squeezing between a couple of columns we surveyed a good distance before the passage choked. Heading back out we surveyed two further unpushed passages to their conclusions. Having now surveyed all open leads we had some time left, so decided to take a look at the high level phreatic passages in the downstream area of the cave around the junction with Torno Inlet. Some centreline data exists for these, but no notes could be found. We started a resurvey of the main passage which we continued until we ran out of time. A job we planned to return to continue the following day as we had a dinner appointment at Casa Tomas' in Ogarrio this evening. On the way out, just before the last crawling passages near the entrance, Footleg noticed what looked like a roof passage about 3m up which he had not seen before. But with dinner on our minds we did not attempt to climb up and investigate.

**Riaño - Exploration of passages close to entrance**  
**Sun. 21st Feb. 2010**

Participants: Paul 'Footleg' Fretwell, Paul Dold, Alistair 'Tackleberry' Smith

The purpose of this trip was to allow Paul Dold to try some photography in the main streamway using a mixture of flashes and LED lights. But just inside the entrance Footleg climbed up to take a quick look at a possible passage he had spotted the day before on our way out, and found an open lead. The floor indicated that no-one had been in there before, so we started surveying and sent Alistair in ahead to explore as he had not yet been in on a new discovery trip. Surveying with a PDA we were soon able to see that our new passage was heading towards the extensions we had been surveying the previous day, and sure enough at the end a body size tube which Alistair pushed came to a visual connection through a too tight hole with a cairn we had built the previous day in a too tight draughting hole.

Having added all this new passage to a series so near the entrance we decided to properly survey the rest of the oxbows and passages off the entrance series to give a complete picture of the development. So the rest of the trip was spent surveying near the entrance and we never got more than 10 minutes from daylight for the rest of the trip.

**Riaño - Resurvey Higher Levels above main streamway downstream of entrance inlet**  
**Mon. 22nd Feb. 2010**

Participants: Paul 'Footleg' Fretwell, Paul Dold, Alistair 'Tackleberry' Smith

The purpose of this trip was to do the photography that had not got done the previous day, and then continue the resurvey work downstream. We set up to photograph in the main streamway at the various cascades between the junction with the entrance inlet and the Torno Inlet junction. After Paul Dold had taken all the pictures he wanted, we continued to the junction where Torno Inlet joins the main stream, and set about investigating and resurveying the higher level fossil phreatic passages which we had partly resurveyed a couple of days ago. First we looked at the loop going off at the top of the climb down into Torno Inlet because



P

this looked more complex than the single centreline that exists in the survey data archives, and I had always suspected something might be found around there. We linked up a couple of short loops before Paul Dold climbed up to the ceiling in the chamber containing flowstone and stumpy stalagmites to look at a slot about 3m up near the roof. Sure enough an open passage could be entered beyond, and after a step over a blind pit we found a nice phreatic sand floored walking size passage sloping down into the unknown. The sandy floor was untouched, and the first steps onto it left deep footprints in the sand. So we knew this was previously unexplored territory. Surveying as we went, we only got about 30m before a stream could be heard ahead, and we emerged in the phreatic roof level of the Torno Inlet passage at the top of the deep vadose canyon. This phreatic level continues as traverses going upstream and may yet yield more side passages. But we had to be out in time to catch our flight home that evening, so the exploration ended there for this trip leaving plenty to do in the future.

## **AUGUST 2010**

### **Hoyuca - Gour Inlet Pushing Trip**

**Mon. 9th Aug. 2010**

Participants: Paul 'Footleg' Fretwell, Paul 'Eddy Sharp-Pencil' Dold, Badger, Steve Sharp, Nick Fincham, Ben Kent

~16 hours! In Giant Panda entrance around 12:30. Back in old ent. 13:30. Out at 02:30 but others not out until gone 03:00.

After a quick trip the previous day to see if Steve could fit through the Giant Panda squeezes, we returned today with a full team to push Gour Inlet. Steve thought that Badger would fit based on his experience the day before, but unfortunately this proved not to be the case! After some valiant attempts to pass the squeeze at the bottom of the pitches, and with a bruised chest to show for it, Badger had to retreat. So Footleg offered to guide him via the old Hoyuca entrance and catch up the rest of the group in Gour Inlet. An hour after first entering Giant Panda, a surface walk down the hill saw us at the old entrance. After some brief unplanned exploration of Head to Head passage we found the way on to Quadraphenia which avoids the squeezes and made good progress to the start of the wet crawl which has previously been flat out and half full of water. Today it was almost dry, with just a couple of centimetres of water flowing through it, but at the far end Footleg had to excavate gravel and cobbles out in order to fit through. It then took some effort digging out the floor by both of us to make it big enough to get Badger through too. Footleg was certain we had excavated the floor down to solid rock by the time we were finished, so it is unlikely that larger cavers could get through this way by excavating out the fill. Finally we passed this obstacle and made steady progress via the Gorilla Walk to reach the start of Gour Inlet. At the bottom of the pitch up the Gour Inlet aven we were relieved to find sandwiches and water waiting for us, as we had packed these in the bags that we last saw in Giant Panda.

Eventually we reached the start of the Tomorrow Morrow extension at the top of the Thunderdome, and after removing our SRT kits, Footleg climbed up to take a look at the roof of the tall rift passage which we had never investigated before. The narrow vadose canyon at this point is around 15m tall, before a classic phreatic development is met at the top. Up to 5m across with lovely banded cream and pale brown limestone, with swirl pockets and domes. Relatively flat ledges exist on either side of the vadose slot in the floor, but the canyon frequently crosses from side to side, so it is not possible to travel very far before having to cross the canyon. It was not possible to cross the canyon to get all the way down stream to the top of the thunderdome aven, but we did get close enough to be confident there were no side passages coming in. Traversing upstream in the phreatic section several minor sand choked side passages were inspected but all quickly closed down. Eventually after much very hairy traversing we were forced down into the floor as the character changed to a much more joint controlled solution development. Further oxbows were explored but no side passages were found going any distance until the far upstream reaches. Here a phreatic Swiss cheese was explored in the roof, leading to some pure white calcite formations beyond some flat out squeezes, but again no ways on. The climb up into this area is where flowstone is seen coming down from above into the streamway. Finally at the very upstream end we found the point where the large old passage development came into the less mature active stream passage which provides the stream now flowing down Gour Inlet. This was climbed up in a large fossil aven containing huge boulders to end at a heavily calcited aven. Pushing a way up through boulders following an ancient fluted wall we reached a balcony near the top of this aven, but could not reach any potential way on at the top where the flowstone appears to be coming from. The highest point was surveyed to, being vertically 38m above the stream, with the top of the ancient fluted aven seen from this point being 47m vertically above the level of the stream. Due to the flowstone all around the walls, it looked unlikely the calcited aven could be bolted up. But the ancient fluted aven wall is solid rock, so bolting here would be possible and could lead on into the continuation of this large older development.

### **Los Hoyos - Afternoon photo trip**

**Tues. 10th Aug. 2010**

Participants: Paul 'Footleg' Fretwell, Nick Fincham, Ben Kent

A trip to Los Hoyos to try my hand at full spherical panoramic photography in a cave for the first time. We set off with Steve Sharp, but only 3 of us ended up descending the cave. The brand new rope we used to rig from



a tree was very fast in my descender, and I had to put a soft lock on half way down because it was too much strain on my arms trying to control my descent with a worn bobbin descender. I needed both hands pulling up hard on the control end of the rope to keep my descent under control. Steve was a little nervous of the abseil before I had my troubles doing it, and decided to stay on the surface. Once I was down I decided to have a go at an HDR photo looking back up the shaft, so I set up my camera on a tripod looking straight up the pitch as Nick was getting onto the rope. While waiting for Nick to get into a good position at the lip of the drop, I experienced a steady rain of small bits of debris from the slope at the top. I looked down at my camera on the tripod pointing lens up and thought maybe I should shield it from the risk of something hitting it from above. Almost as soon as I put my hand over the lens, a small pebble smacked off the back of my hand directly in front of the centre of the lens. A lucky escape for what was a new special wide angle lens I had just purchased for panoramic photography! I took a few photos of Nick coming down the pitch, silhouetted against the trees over the entrance with varying exposures. Then I used my LED lamps to paint with light to illuminate the foreground at the bottom of the shaft. A lot of images to play with on the computer with some HDR software some time in the future.

So on to the main objective, which was to take a couple of full spherical panoramas, one in each of the decorated chambers in the cave. We started in the right hand chamber, and by the time we were finished shooting the first panorama it was time to exit! A return to photograph the left hand chamber containing the bear skeleton is required.

### **Hoyuca - Far Stomps Resurvey**

**Wed. 11th Aug. 2010**

Participants: Paul 'Footleg' Fretwell, Paul 'Eddy Sharp-Pencil' Dold

The original Near Stomps survey of Hoyuca shows a side passage on the left a little way before Gour Inlet is reached. We had passed this point many times and never stopped to take a look. It seemed likely that it was connected with a small inlet which flows into the main stream from under the boulders in the main passage, but we had not really ever tried to find the way into it. So we decided to investigate this and resurvey it as our initial objective on this trip. The side passage was quickly spotted as a narrow hands and knees crawl into a slot in the left hand wall of the main passage. We surveyed in as we went, and after a hole in the floor the end was reached at an impressively large aven which looks like an excellent bolting project. This side passage is not named in any records we have found and the old survey data was lost some time in the past. So we decided to call it 'Hidden Aven' on the resurvey because the aven is quite unexpected given the insignificant looking start to the side passage it is reached via. There was water falling from high above and we could not get a height reading for the top of the aven due to spray and the overall distance upsetting the Disto. The best reading we managed to get was from a point on the wall a little below a big ledge 21m vertically above the floor. We estimated by eye that the aven was 30-40m high based on this reading.

Having completed the resurvey of this passage and aven, we continued resurveying from here downstream to the end of the Far Stomps. We tied the survey into the marked station we set a few years back at the start of Gour Inlet, then on towards Obvious Junction. On the way we investigated a possible lead up flowstone above the huge stalactite which hangs down in the middle of the passage just downstream from the gours where the water from Gour Inlet enters the Near Stomps stream. This looks like a possible going lead, but requires a very bold step across from a huge block to gain entry up a steep calcite slope. Some protection is required to safely investigate up there. We set another marked station on a boulder at Obvious Junction in order to resurvey Crossover in the future. Then on to the Far Stomps which is really impressive sized passage. We did not have time to look at the small inlet marked on the old survey, and found no other side passages at all. After climbing up to the roof to get over a huge wall of boulders and back down the other side, the passage character changes to a lower wide bedding. This is not obvious from the passage width on the plan view of the survey, so was quite unexpected having only seen the original survey of this passage in the past. Our detailed resurvey has since enabled a proper 3D model of this passage to be created which clearly shows this change in development. We reached the 'draughting sump' at the end of the passage to discover that it is actually a crawling height but very wide bedding filled almost to the roof with water. We surveyed as far into it as was practical, with the DistoX and PDA in aquapak cases. The airspace continues as far as we could see, with a steady flow of air across the water surface. But it would be a nose to the ceiling job to progress further. At this point Footleg noticed there was water in the PDA case and an emergency retreat to dry land was made to rescue the PDA before the water got into it! Clearly the rip around a press stud in the out skin of the case lets water into the inside. In total we had re-surveyed just over 1km of passage on the trip.

On the return Footleg investigated a wet oxbow containing the stream in the Near Stomps between the Hidden Aven side passage and the 2nd River Inlet, seeing as he was already wet. No side passages come off the oxbow, just nipple deep wading. But as he came back into the main passage a crawling size inlet low down on the left was noticed (when looking upstream in main passage). Footleg crawled a good distance up this, and left it still going. We need to return to survey this to a conclusion.



### **Riaño - Far End Investigatory Trip**

**Wed. 11th Aug. 2010**

Participants: Badger, Steve Sharp, Nick Fincham, Ben Kent

They went to explore the inlet which provides the stream that flows through to Hoyuca as the 2nd River Inlet. The original survey shows a pitch down near the end. But they failed to find this pitch and could not make much sense of the passages compared to the survey. Only Nick and Ben could pass a squeeze about half way up the inlet.

### **Risco - Cast of thousands photo trip**

**Thurs. 12th Aug. 2010**

Participants: Paul 'Footleg' Fretwell, Nick Fincham, Ben Kent, Paul 'Eddy Sharp-Pencil' Dold, Steve 'Big Steve' Martin, Johnny 'Dingle' Latimer, Jude Onions, Steve Sharp, Diane Arthurs, Simon Cornhill, Pete 'Pedro' Smith

A through trip organised by Big Steve Martin to get some photographers into Risco. Paul Dold, Steve Sharp and Footleg divided the large group into 3 separate photo-teams. Team Dold took lots of photographs which can now be seen on the Risco page of the website. Footleg's team took lots of photos, but after the trip he discovered that his new radio slave had caused an interference pattern to appear on most of the frames making them unusable without cropping. Steve Sharp drew the shortest straw, finding himself up front with Pedro who wanted to get out as fast as possible and so did not stop to allow him to take any photos. When he did get out, his dry clothes were locked in another car. So he decided to walk back to the apartments at the Bakers Bar and ended up being chased down the road by a pack of dogs!

### **Hoyuca - Astradome and Surroundings**

**Fri. 13th Aug. 2010**

Participants: Paul 'Footleg' Fretwell, Paul 'Eddy Sharp-Pencil' Dold, Steve Sharp, Nick Fincham, Ben Kent

Having finally had a good pushing trip at the end of the Gour Inlet extensions, and visited the end of the Far Stomps, we turned our attention to the further reaches of Hoyuca. Footleg wanted to take a look at the 4th River Inlet which he had been planning to look at for over a year now. But as this was our last full day of the summer trip, we were also keen to check out all the other little leads we had not had time for on previous trips to Gour Inlet. So starting at the bottom of Giant Panda, Footleg investigated the area around the downstream sump in the Gorilla Walk where we had got lost in some sort of inlet a couple of years ago on our first trip in here. Confirmed there is an inlet here which needs pushing and surveying.

Then on to the significant inlet just after the 2nd River Inlet. The majority of the water forming the stream in the Near Stomps enters from the right here, but this inlet was never named on the old surveys. The water emerges from a low squeeze under a boulder, but this was bypassed by digging out some cobbles to reach a space on the other side. The stream appears to emerge from boulders here, but squeezing up into a space above, a possible continuation could be seen which requires some digging. This is a most interesting prospect because a significant amount of water emerges from this inlet even in the driest of years. Exiting from here we discovered an alternative route higher up, and further investigation of this area which comprises the left hand side of the initial section of the Near Stomps passage revealed that it is possible to push on up a considerable distance above the level of the ceiling of the Near Stomps ascending a rubble slope. We spent about an hour with various team members digging in different places, but all failed to find a way on. The most extensive push was made by climbing onto the top of a large boulder followed by a very bold step and climb up into a chamber above. From here various ways on either closed down or led into further chambers in

boulders with links back to look down into the previous chambers. Finally all routes ended in a chamber with flowstone on the floor. There is probably enough passage here to be worth surveying, but the climb up really needs a ladder to enable a safe ascent and descent.

Continuing on to Obvious Junction, from here on was new ground for everyone on the trip. Through Crossover to join the stream coming in from the 3rd River Inlet. Proceeded downstream past an obvious active inlet on the right which has never been surveyed. Assumed this was the inlet mentioned by a group who visited from Oxford last week, who came down to push the 4th River Inlet, poked around at various places, failed to survey anything and then criticised our rigging of Giant Panda as 'sloppy' in the log book. We took a look at Straw Inlet to see what was at the end, and confirmed it was a definite static sump.

Then on downstream where Dold poked around in a side passage at the sharp left hand bend in the main passage. We then found that the '96 Passage marked on the survey at the following sharp right hand bend is not actually there. It is in fact a little way downstream of the bend. Something else to sort out when we re-survey through this section next year. In Diversion Chamber we had a look at the Diversion Chamber inlet which ends at an aven begging to be bolted up. But what caught our eye was the active inlet back along the left hand wall of the Diversion Chamber. An obvious pool under the wall conceals a hands and knees crawl along a small phreatic tube half filled with water. We surveyed through the crawl to a series of clean washed cascades ending at avens which we partly climbed to where a couple of bolts are required to continue up to the active inlet above. Given the wet nature of the start of the inlet and the fact the Oxford team had missed it completely we decided to call this Sloppy Inlet.



Continued on downstream to the 'main' objective of the 4th River Inlet. But Steve Sharp had already been as far as the Astradome while Dold and Footleg were surveying Sloppy Inlet and so we left him to look in 4th River Inlet and went to look at the Astradome first. Got side tracked by the Armageddon Bypass, which is another job on the survey list as it was never completely surveyed. Footleg had assumed this was because it was a small crawl, but in fact it is large walking size passage. Just with knee deep sticky mud just under the water surface. Back in the main passage we tried to make it all the way to Sandy Junction to look at the other end of the 'draughting sump' that we had visited at the end of the Far Stomps earlier in the week. But we found the way on confusing in crawls in water under boulders and I think we did not go quite far enough before turning around to get back to the 4th River Inlet. Took a look at the impressive Astradome on the way back past.

Back at the 4th River Inlet we met an excited Steve Sharp who had pushed his way through large cobbles at the end to find the way on open beyond the limit of previous exploration. Dold and Footleg set off to survey this and push to the end. We reached a point where the ways split and closed down, with one rift continuing over a too narrow rift as stream level and ran out of time to push it to the very end.

A great trip which tied up lots of loose ends, and generated lots of new questions to be investigated in the future. Not a great amount of new survey data generated, by a whole load of potential uncovered to push and survey another year.

### **Los Hoyos - Morning photo trip**

**Sat. 14th Aug. 2010**

Participants: Paul 'Footleg' Fretwell, Steve Sharp

We had to depart from Matienzo in the middle of the afternoon for the long drive back to Calais and the ferry home. So Steve and I took the chance for a quick morning trip down Los Hoyos again so that I could take a panoramic photograph of the chamber containing the bear skeleton. A straight forward trip and around 2 hours spent taking the photograph itself. Back at home it took about 6 months of work on the computer to generate the panoramic image from the raw photos taken on this trip.

## **AUGUST 2011**

### **Riaño - Pendant Chamber survey extension**

**Thurs. 4th Aug. 2011**

Participants: Paul 'Footleg' Fretwell, Alistair 'Tackleberry' Smith, Ben Kent, Tony 'Badger' Radmall

The original plan was to visit the upper series in Riaño to look at the passages off to the right after the 89cents Tinto junction as we had not yet visited this part of the cave. But once we got up into the upper series, Footleg suggested we took a quick look at the large chamber at the Western end of the series (which we have now had confirmed by Lank is named 'Pendant Chamber'). There is a set of survey legs which drop down at the back of this chamber which appear to intersect the end of Double Barrel passage, but no actual link is known. So we took a look around Pendant Chamber and found a big rift dropping off at the back left corner as seen from the point where you enter the chamber. Unfortunately this looked to be too deep to descend with the one ladder we had brought with us and so had to be left for another day. But while there Footleg noticed a big sand slope heading up at the Western end of the chamber. Ascending this some distance where Footleg knew there was no survey data gained the top of the slope, with a 3m drop down into large going passage beyond. This looked like an easy descent with a hand line, so we decided to bring up the rope. Before doing so we tied into a marked survey station in the chamber and surveyed up the slope so we could tie in the new passage to the existing survey. Once down the climb into the unknown it was clear that someone had been there before, and a crawl going under boulders where the passage size closed down just around the first bend led back into the main passage of the Upper Series. Ah well, at least that tidied up two open leads on the survey and added a centreline through them.

We tied into another marked station in the main passage and then took a look at the pit in the passage here. Using the ladder, Footleg reached the bottom where a vertical squeeze down another 3m drop into what looked like narrow meanders was seen, but not attempted due to lack to tackle to reverse the 3m climb. This is open and waiting for someone to return to. Shot a disto leg down the shaft and then resurveyed back down the main passage to the chamber to close the loop onto our new data, and tie into another marked station in the main passage.

Despite excellent loop closure errors on the DistoX measured data for this trip, there was a 3m horizontal positional error in the correspondence between the relative positions of the two fixed stations we tied into in the main passage compared to the old main passage data. This may be down to incorrect declination adjustment as it looks like a rotational displacement on the plan view. There was no apparent correspondence between the position of the marked station in the Pendant Chamber and the position our new data placed it at either. So it looks like this area would benefit from a resurvey with DistoX back to the point where the Upper Series is entered. This could reposition the chamber with respect to Double Barrel passage and explain the mystery of these apparently intersecting centre-lines which do not apparently connect underground.



## **Hoyuca - Panoramic Photography at the Astradome**

**Fri. 5th Aug. 2011**

Participants: Paul 'Footleg' Fretwell, Alistair 'Tackleberry' Smith, Ben Kent, Diane Arthurs, Neil 'Slim' McCallum, Paul 'Eddy Sharp Pencil' Dold

Entered via the Giant Panda entrance for a trip to the Astradome to attempt a complete 360/180 panoramic photograph at the base of this impressive aven. While the photography was taking place, Paul Dold and Slim aimed to bolt up the 8m pitch reached at the upstream end of Sloppy Inlet found last Summer off Diversion Chamber. On the way there we refreshed our memory regarding the number of inlets to be surveyed off the main route from 3rd River Inlet to Diversion Chamber which we had noted last year. One of these open passages off Las Playas was missing from Footleg's notes from 2010. Our next objective of the system master survey project is to resurvey the section from Obvious Junction to Diversion Chamber including all these minor side passages which have never been surveyed to our knowledge.

But first the photography so we all went as far as the Astradome to see it illuminated with Footleg's new pair of home built 2700 Lumen LED lamps (the first time these had been taken underground). Paul and Slim then headed back to Sloppy Inlet to tackle the bolting project while the rest of us started work to set up the photo shoot.

Tackleberry kindly volunteered to ascend the fixed ropes to part way up the Astradome in order to have someone on rope in the photo and to better illuminate the upper part of the aven. We concentrated on the frame looking straight up initially to ensure we got a good capture of this part of the scene while we had somebody on rope. Even with the new super LED lights the shutter speeds were still 15-30 seconds and so Tackleberry was just a blur due to the impossibility of staying stationary for that long on rope hanging in space. Once Footleg was happy with having tried every possible lighting position from the bottom looking straight up we allowed Tackleberry to come back down. Unfortunately he got a bit tied up at a rebelay and being the only person on location with an SRT kit there was nothing we could do to help. Eventually to our relief at the bottom he managed to extract himself from his predicament. This was even more of a relief for him as he had been well aware of how rusty the maillons looked after 16+ years in the cave! But he was still prepared to pose for some more shots as he was now against a wall and hence able to hold position better for the long exposures, and these frames look to have worked much better. Eventually back on the ground he mentioned that he had been the most scared of anytime in his life, so all credit to him for still posing for photos and not shouting any abuse back down when asked to just hang there again for 'just one more' shot, over and over!

Tackleberry went up the slope into the passage out of sight to remove his SRT kit while Footleg instructed Ben and Diane on where to point the lights in order to completely photograph the walls and floor of the chamber in all directions. On reaching the starting point again after a complete rotation of the camera, Footleg noticed a pantomime monkey sat silently on a boulder in the middle of the frame. Yet another photography sabotage attempt! Tackleberry was wearing a complete head to foot monkey outfit, and so we proceeded to pose him in various places around the chamber in order to make an alternative monkey version of the panorama. This was almost our undoing as one of the lights suddenly failed. The battery protection circuitry had cut in having detected that the cells had discharged to a level where it was no longer safe to use them without damaging them. So with just one light remaining and expecting that to also fail at any moment we completed the essential frames to cover the area of the floor where the tripod had been standing and wrapped up the photo shoot. The lights had been a great success on their first outing.

With perfect timing, Paul Dold and Slim returned from their bolting project just as we had packed up. They had managed to ascend the 8m pitch which was the furthest point reached last year, scaled a couple more climbs/short pitches and reached the bottom of a 50m aven with a great echo. (They returned later in the expedition to survey this additional passage). Rather than call it a day we decided we could fit in a bit more work, and so started to survey back out from Diversion Chamber as far as the first unsurveyed inlet (the one which was missing from Footleg's notes). We surveyed and pushed this to the end, where a number of avens were reached. This appears to be the pattern for all the side passages in this area of Hoyuca, with avens at the end of Diversion Chamber inlet, Sloppy inlet, this unnamed inlet plus of course the Astradome. With some new survey data in the PDA we started to head back out at around 22:00, getting everyone back on the surface a little after midnight.

## **Hoyuca - Sloppy Inlet Bolting**

**Fri. 5th Aug. 2011**

Paul Dold / Neil (Slim) McCallum (See a/c already in logbook)

## **Los Hoyos - Entrance photos trip**

**Sat. 6th Aug. 2011**

Participants: Paul 'Footleg' Fretwell, Alistair 'Tackleberry' Smith, Tony 'Badger' Radmall (plus rigging assistance the previous day by Gary Cullen, Lucy Stodart and Badger)



Having successfully taken my first proper cave panoramic images in Los Hoyos last summer, I wanted to complete the project with a couple of panoramas taken at the top and bottom of the entrance shaft. I thought it would be great if the surface image was taken from a point overlooking the shaft, and so the previous day Gary, Badger and Lucy had taken up a load of rope and rigged the cave for us, including a Tyrolean traverse across the shaft. A mid air complete spherical panorama was a challenging project to attempt, but could make for a most unusual photograph.

On the day we started out late on account of the long trip in Hoyuca the previous day. So mid way through the afternoon in bright sunshine we drove up the road to the cave. As we were getting changed the sky began to darken as an ominous bank of cloud appeared. By the time we reached the entrance the light was too poor to be possible to take a mid-rope photograph, so we derigged the excellent Tyrolean. But the stance where it had been rigged from opposite the hang down the shaft was an excellent spot to take the image, and the traverse rigging provided good protection for myself at this exposed spot. By lashing the tripod horizontally between two trees, I was able to position the camera as far out over the shaft as it could be while still allowing me to reach it. With the camera all set up and Tackleberry on the rope down the shaft we were about ready to attempt the photograph. By this point it was raining heavily.

With Badger assisting in shining some light down the shaft to reduce the shadows, and also holding a plastic carrier bag over the camera out over the shaft to prevent it getting too wet from the rain we spent a good hour capturing frames to make up the panoramic image. For the shots where the camera was pointing upwards, Badger had to whip away the carrier bag while I took as many frames of the different positions for the panorama as possible before the lens got hit by water drops coming off the trees over head and needed to be dried. So it all proved rather challenging. We attempted some frames to capture Badger and myself on the edge of the shaft too, but never managed to get either of us entire within any one frame. Some creative editing on the computer may allow me to reattach our missing limbs well enough to include ourselves in the final image!

With the surface shot completed, I descended the shaft to join Tackleberry at the bottom to take a quicker panorama of the bottom of the pitch. This was just about achieved before I ran out of dry tissue to keep the lens clear of water splats, and the remote release started to jam up due to water and mud getting into the switch. Meanwhile Badger in the pouring rain the on surface carried much of the tackle from the traverse and camera stance back down to the car. A real team effort to pull off a couple of hopefully interesting images to complete my interactive Los Hoyos panoramas project. Thanks to all the people who helped make it possible. I certainly could not have managed it without a great deal of assistance in some quite unpleasant conditions.

### **Riaño - Fried Egg resurvey**

**Sun. 7th Aug. 2011**

Participants: Paul 'Footleg' Fretwell, Alistair 'Tackleberry' Smith, Tony 'Badger' Radmall

Footleg's last day of this Summer expedition, and with his flight home later in the evening an easy trip was planned to gather some valuable data towards the 4 Valleys master survey without risking any delay in getting out in good time to get to the airport. There was a partly finished resurvey of the phreatic upper level passage in downstream Riaño which we had had to leave last year on a similar trip where we had a flight to catch in the evening. We headed in and downstream to the junction with the Torno Inlet, and resurveyed the higher level loop of the dry passages, joining into the main phreatic passage we had resurveyed last year. Then took a quick look at the unsurveyed inlet which comes in at the Fried Egg on a Stick formation. This was confirmed to quickly become very tight and awkward. So we continued along the main passage to the end of last year's survey and continued surveying all the way to the end of this passage.

Centre-line data exists for the passages here, but no sketches or any description we have found of the passages. So we were interested to find an active streamway. Downstream immediately flowed into a sediment choked low crawl and sink surrounded by mud banks. Upstream reached the bottom of an aven which appears to have a continuing passage requiring bolting to enter. But the majority of the water comes from a narrow ascending rift which was climbed to a crawl on pebbles round a corner to where the water emerges from what appears to be a low shallow sump with a fist sized eyehole showing airspace beyond but no draft. The sump would require digging to pass and possibly rock removal too. This was confirmed from the old centre-line data to be the previous end point reached in the past. No other side passages were found on this trip, other than one remaining branch for which old centre-line data also exists, and a climb down into the main Riaño downstream passage. Both of these need a return visit to resurvey and explore.

Made it out in good time for an airport pick-up at Riaño bar by Bottlebank who was going to meet Sue's incoming flight around the same time as Footleg's flight home.



## NOVEMBER TRIP REPORT

For 2538

**Team** Martin Barnicott, Chris Camm, Phil Goodwin, Alf Latham, Brian Latimer, Dave Milner, Gordon Procter and John Southworth.

**Plan** 8 caving/prospecting days were planned with over 20 sites in 8 areas earmarked for re-examination. The plan changed when one of the 20 sites (2538) was visited. The site was originally visited in 2006 by Pete Clewes and Andy Pringle, who noted that after a few metres there was a slot blocked by a boulder that would need snappers to get down. They also mentioned a good draught. John S picked up on this and put it on the list. As lying south of Aguanaz and not too high it could be a good prospect.

**14 November** Full team visited Moncobe area and 2538. The first thing that hit us was the draught, it was howling out. The boulder was despatched with a hammer and chisel and the rift snapped out to allow access to a roomy chamber. Here most of the draught was coming out of a small eye hole with more coming up out of the boulder floor. The boulder floor looked like it might take a while to pass but Gordon set to and after an hour or two had a 3 to 4m drop to a tight slot. This was strongly draughting out. More snappering allowed a view of a roomy shaft distoed at 19.5 m from the bottom of the boulder dig.

**Warning.** Don't climb down possibly unstable boulders until some more stabilisation work has been carried out, A short ladder here avoids the need to climb on these loose boulders.

**15 November** More enlargement work at the pitch head allowed Phil to descend and assess the possible ways on. A tight squeeze past a calcite boss led into the side of a large aven probably some 5m above a floor. There may be other ways on but viewing from the boss was restricted. The draught was out and still as strong as ever. More work will be needed to get pass the boss.

**17/18 November** The draught had stopped or reversed - we were lucky to have seen it blowing out as strong as we did on the first 2 days. Short pitch over calcite drops to floor mentioned above. Short drops then lead down to a further 20m pitch leading to some horizontal passage which, after a few metres, leads into a breakdown chamber. An obvious water worn passage heading due south was taken over false floors to a 5m pitch. Beyond this the passage size increases dramatically to approx 5-6m wide and 10m high. The passage continues large and heading south until turning and heading westwards. At the turn a large unexplored inlet comes in from the south. Back in the westwards downstream passage a chamber is reached where the continuing westwards passage is hands and knees over cobbles. To the south out of this chamber a shallow mud bank leads to a 2m high passage through several chambers with mud floors. Before becoming a 10-15m high passage passing an area where the floor drops by 5m or so. Further on a knee deep pool is met and a junction (station 1.68). Here wading allows a passage to the west to be followed to a climb out over a white calcite floor. The way on is to the left and enters the water again. A Yorkshire-type active streamway was followed easily past unexplored inlets and surveying stopped at the top of a small 1.5m climb down into a pool (Station 1.100). Back at the junction (Station 1.68) a passage continues south. This is also a downstream passage with a small stream which was followed until ending at a duck where a more open passage might be present some 15m forward beyond Lake Tilberthwaite.

Work will continue. Surveyed centreline 800m and depth of 82m.

From: [direct.station.limited@hotmail.co.uk](mailto:direct.station.limited@hotmail.co.uk)

To: [strans@hotmail.co.uk](mailto:strans@hotmail.co.uk)

Subject: Cave 2538.

Date: Mon, 21 Nov 2011 12:35:07 +0000

Just the line survey so far, barney is working on detailed one.  
850m surveyed excluding splays.

1km+ explored, high level stuff not touched.

3 big down stream passages still going.

Entrance on survey is at very top of page.

Cheers John.

Participants: Paul 'Fooling' Fretwell, Alistair Tackleberry Smith, Tony Badger, Pauline (plus flying  
scabbards the previous day by Gary Cullen, Lucy Stodart and Badger)



**From:** barni <m@barnicott.com>

**To:** direct.station.limited <direct.station.limited@hotmail.co.uk>; philcygoodwin <philcygoodwin@gmail.com>; davelmilner <davelmilner@aol.com>; digscaves <digscaves@yahoo.co.uk>; Johnny Latimer <johnny.latimer@googlemail.com>

**CC:** Juan Corrin <uzueka@aol.com>

**Subject:** Moncobe

**Date:** Tue, 22 Nov 2011 12:26

**Attachments:** moncobe.pdf (145K), moncobe-xelev.pdf (56K), moncobe.lox (285K)

Hi all

Attached is the plan and elevation for Moncobe. Plus the lox file.

Phil and Brian, if you have any comments of things I have omitted or just plain got wrong please send and I will make adjustments.

Juan can tell me in what form to send the data he wants, pretty sure it will be worth starting again at the beginning before it gets too big by someone more adept at surveying than I.

Can you forward it to others as I have got no more addresses though guess Johnny can pass on to "Dingle Major"

Thanks again for a good few days

Cheers

Barny

nov 11.txt

Hi Juan.

Apart for info on 2538 ( Cueva Moncobe ) most of what we achieved , stumbled on etc is in these folders. *over* →

Thought it might help you make more sense of them if I sent you the log as well.

Just missing some odd bits from Mr Camm, descriptions gps etc which could take some time, so have used

sigpac ED50 for the 2 new finds.

Glad we went to look at 2538 on our second day instead of towards the end of our stay.

We will let you have full details of Moncobe asap when Phil, Brian & Barny get it sorted.

The first 20m pitch is very tight with srt gear on, I cant get down it and Alf cant pass the squeeze at the

base of this pitch. Hope to enlarge these sections soon so that the original diggers can have a trip down

before the hoards arrive.

Cheers John.

*shiny square and strong. Snapp down a tight rift at  
about 3m above was called to see a creamy white floor.*



CHRIS CAMM (C.C), PHIL GOODWIN (PG).  
ALF LATHAM (A.L), BRIAN LATIMER (BL).  
DAVE MILNER (DM) GORDON PROCTER (GP)  
JOHN SOUTHWORTH (JS)  
MARTIN BARNICOTT (M.B)

12.11.2011 3021

DIG AT MICHELIN HOLE, EXCAVATED CRAWL TO  
TIGHT LEFT HAND BOND TO SMALL ~~CHAMBER~~  
BOULDER FILLED CHAMBER, REQUIRES MAJOR  
CAPING WORK, GOOD DRAUGHT. LOOKED IN  
WOOD TO WEST, NOTHING OF INTEREST,  
C.C DM GP JS

12.11.2011 3554

PREVIOUSLY RESEARCHED PITCH FOUND TO BE TO TIGHT  
REQUIRES FURTHER INVESTIGATION. CONTINUATION OVER  
PITCH LEADS TO ROOMY CHAMBER WITH HIGHER LEVEL  
CHAMBER DIRECTLY ABOVE. ACCESS TO HIGHER LEVEL VIA  
TIGHT SLOT IN ROOF ACCESSED BY BOLTING THROUGH TIGHT SLOT INTO  
A HIGHLY CALCIFIED ROOMY CHAMBER, WITH NO OBVIOUS CONTINUATION.  
P.G A.L B.L D.M

12. NOV 2011 C.C.

~~DEPRESSION~~ (BROWN ROAD) VERY CLOSE TO  
HALL AND GRAVE (DEER PARK) DRAUGHTS  
DIG NEEDS AN HOUR OR TWO TO SEE IF WORTH  
PUNISH.

JS, GP, CC WOUND IN SUMMER ABOVE ROAD  
LOOKED FOR NOTES SINCE VANISHED <sup>GAPS</sup> ~~WAS~~ BETWEEN  
BOULDER BUT NOTHING OBVIOUS THAT WAS  
GONE. 3543



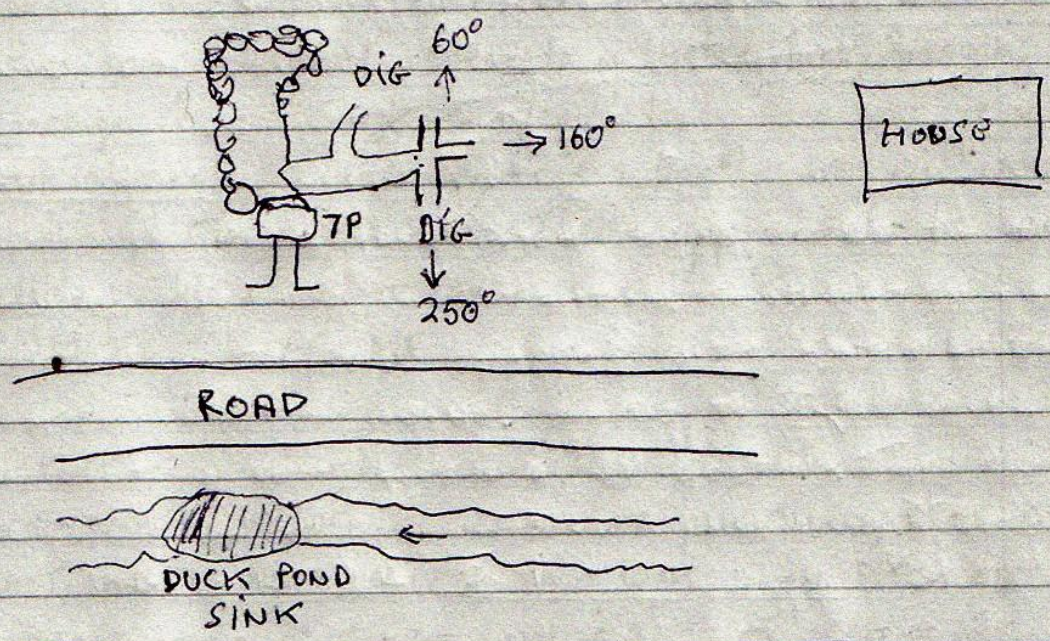
13.11.2011

BUSHWACKING IN ~~MONOCOB~~ MONOCOB AREA  
EC. PG. AL. BL. DM. GP. JS

14.11.2011

3215

EXCAVATED SANDY DIG TO THREE WAY JUNCTION.  
NOW ROOM TO START SNAPPING RIGHT HAND (250°)  
BRANCH FOLLOWING DRAUGHT  
DM. GP. JS



14.11.2011

2538

From the entrance a passage <sup>110m</sup> led to boulder which was removed revealing a boulder choked rift. The rift was enlarged to become a tight contorted pitch of 7/8m opening out into a roomy chamber. At the far end of the chamber a very strong draught emerged from an eye hole with more draught coming out of the boulders at floor level. The boulders were removed by our human jack-hammer to reveal a drop of some 3/4 metres. The draught coming up was now strong. Snapping down a tight rift at about 3 metres was sufficient to view a roomy shaft. From



the bottom of the 3/4 metre drop an initial measurement shows a drop of 19.5 metres to a boulder floor which may slope downwards. Only time will tell.

PG, AL, BL, C.C. GP, JS, DM.

15<sup>th</sup> November 2011 2538

Further enlargement of the head of the pitch allowed a descent to a flat floor. The pitch takes the form of a rift about 2 metres wide in places. Back under the higher chamber the way on is heavily calcited <sup>and totally blocked.</sup> In the other direction a passage is too small at floor level but an easy climb of about 2 metres gains awkward access to a 1 metre high <sup>narrow</sup> passage. The passage of some 5 metres in length leads to a squeeze into a very large calcited aven. ~~in~~ Access to the aven will involve a drop of about 5m. to the floor. There appears to be several possible exits at floor level.

BL, DM, JS, AL, PG, MB

16.11.2011 3454

RE-EXAMINED FINAL CHAMBER, NO CHANCE OF DIGGING. NOTICED TIGHT RIFT PART WAY DOWN PITCH ON L/H SIDE, WOULD REQUIRE SNAPPERS TO ENLARGE FIRST COUPLE OF METRES. P.G JS B.L

~~16.11.2011~~

16.11.2011 3497

SHAFT 15M DEEP TO CHOKE, HALF WAY DOWN SHAFT ARE TWO SMALL DROPS WHICH UNITE AT BASE AND CHOKE

J.S M.B P.G D.M B.L

16.11.2011 3451

RE-EXPLORED LOOKING FOR LOST DRAUGHT, FOLLOWED TO SMALL CHAMBER WITH NO ~~obvious~~ WAY ON  
D.M M.B OBVIOUS



16. 11. 2011

3497

21

DROPPED 7M TO CHOKER, ALSO 2 SMALL SHAFTS HALF  
WAY DOWN WHICH UNITS AT BASE AND BOTH CHOKES  
J.S. D.M. P.G. B.L. M.B.

OC + GP. 16 NOV 11.

DUG IN SNAKEHOLE IS FRONT OF 305 PASSAGE.  
3 - DUG TO WOOD BRIDGES COVERED WITH TYRE  
WOULD NEED A LOT OF WORK TO PROGRESS FURTHER.

17<sup>th</sup> Nov Thursday. (Hill). San Antonio avenue 10m.

3605  
A.G.L., G.P., J.S. located a small depression just in the  
wood (border a low wall along the wood). Ladder to tree  
leads to 10m hole among v large dark grey boulders.  
No good draft detected. No road way in. See 2 pages on

3439  
A.G.L.-G.P. From the above a downhill ~~to~~ walk finds a faint  
track E-W along the contours of the <sup>wooded</sup> hill along a  
old rotten fence. A few mins walking find a shaft  
next to a tree on upside of faint track. 8m climb  
down shaft ends in small boulder floor. No draft.

2538

From the top of the short tight passage a short  
pitch after a squeeze over calcite leads into the aven mentioned  
earlier. Two steps lead to the head of another pitch of  
about 20m. A walk of about 20m exits in very large  
chamber with avens, blocks in the floor and several possible  
ways on. An obvious water-worn passage on the right was  
taken. After about 100m of easy walking the floor opens with  
a drop of about 5m. This leads into large open passage  
with branches in several directions, big chambers and pools of  
water. Several 100m of passage were covered.

P.G. M.B.



18<sup>th</sup> November 2011

2538 P.G. M.B. B.L

Surveying trip. Main passages surveyed.  
The left hand branch of the main passage was followed to a deep pool. The way on is a low duck which continues for at least 10 metres.

The right hand branch was followed past the furthest point of yesterday where it suddenly becomes an active stream passage which was followed until it descended into a pitch of a possible 30m depth.

19 NOVEMBER 2011 POSITION TO FOLLOW

FOUND NEW CAVE, LARGE ENTRANCE WITH CLIMB DOWN AT ENTRANCE ONTO FARM WASTE INTO LARGE PASSAGE PAST WASHING MACHINE DECREASING IN SIZE TO ~~A~~ CHOKED KEYHOLE PASSAGE WITH SLIGHT DRAUGHT, TOTAL LENGTH 17M, DEPTH 10M, ~~A~~ 25M DOWN HILL FROM THIS SITE IS A 4M CHOKED SHAFT, (3606)

(3420)

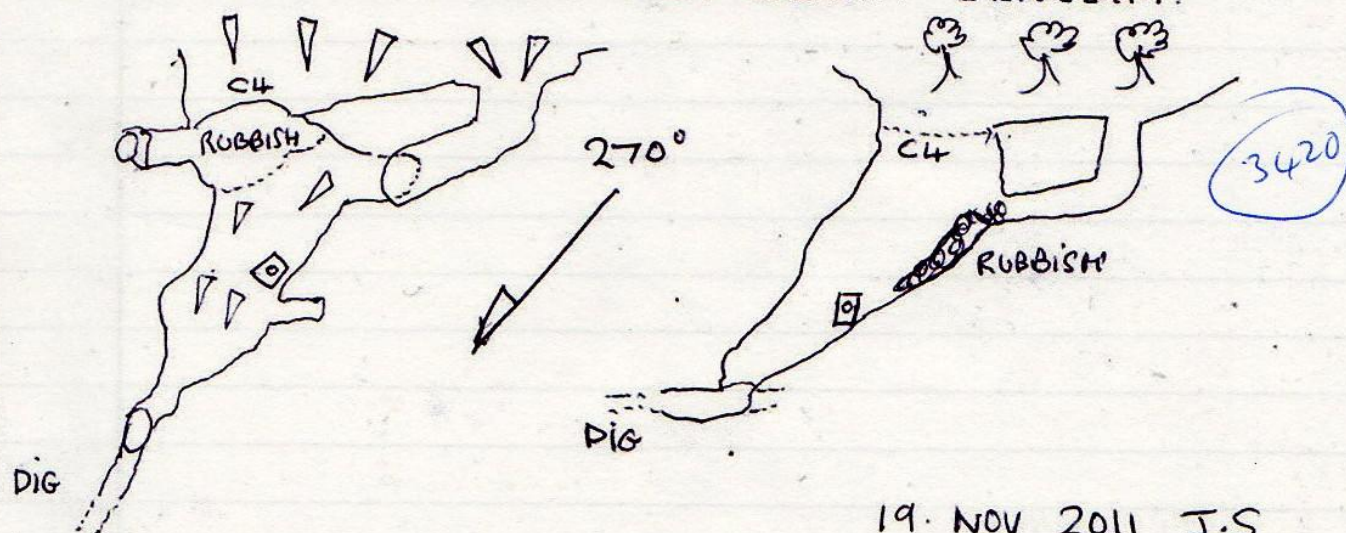


SAN ANTONIO ALT 117M 446749 4801349 FROM SIGPAC ED50  
SHAFT 10M (3605) ~~3420~~ See 2 pages back.

SHAFT IN WOODS 25M FROM SIGPAC REF. A 10M DROP INTO CHAMBER WITH VERY LARGE BOULDERS. NO OBVIOUS WAY ON. NO DRAUGHT DETECTED. 17 NOV 2011

IDEOPUERTA ALT 306M 446681 4796616 FROM SIGPAC ED50  
CAVE 17M ENT DEPTH 10M

LARGE CAVE AT BOTTOM OF LONG WOODED GULLEY. CLIMB DOWN OF 4M ONTO FARM RUBBISH INTO DESCENDING PASSAGE, PAST WASHING MACHINE TO NARROWING RIFT PASSAGE THEN A FLAT OUT CRAWL WHICH WOULD REQUIRE A LONG TERM DIG. SLIGHT DRAUGHT.



19. NOV 2011 J.S

~~3420~~ 3497

16 NOV 2011

SHAFT 15M DEEP TO CHOKE, HALF WAY DOWN SHAFT ARE TWO SMALL DROPS WHICH UNITE AT BASE AND CHOKE

3021

12 NOV 2011

RE-EXAMINED AFTER NOTING STRONG DRAUGHT SUMMER 2011. EXCAVATED CRAWL TO TIGHT LEFT HAND BEND TO SMALL BOULDER FILLED CHAMBER. REQUIRES MAJOR WORK WITH SPOIL NOW HAVING TO BE REMOVED TO SURFACE. GOOD DRAUGHT.

3015

13 NOV 2011

SHAFT EXCAVATED IN SAME DEPRESSION AS 3015. TO TIGHT AFTER 4M.

3215

14 NOV 2011

PASSAGE ENLARGED TO ALLOW EASY ACCESS TO CROSS RIFT DIG.



55

## LIST OF PICS

### NEW CAVE IDEOPUERTA (3420)

DAVE MILNER AT ENTRANCE. PHOTO JOHN SOUTHWORTH 01  
PASSAGE NEXT TO WASHING MACHINE " " W031. 02  
W037. LOOKING BACK TO ENTRANCE L-R. BRIAN LATIMER  
CHRIS CAMM. PHIL GOODWIN. BARNY. ALF LATHAM 03.  
PHOTO JOHN SOUTHWORTH

### SHAFT. SAN ANTONIO IN WOOD (3605) W029 ALF LATHAM PHOTO JOHN SOUTHWORTH

### 2538 PHIL GOODWIN PICS

BOTTOM OF 2ND BIG PITCH pgs 01  
BOTTOM OF LITTLE PITCH 3 pgs 02  
LITTLE CHAMBER BEFORE 1ST BIG PITCH pgs 03  
LOOKING TOWARDS FIRST BIG PITCH pgs 04  
JOHN SOUTHWORTH PICS

W006 DAVE MILNER 1ST PITCH js 01  
W008 BRIAN LATIMER 1ST PITCH js 02  
W013 BRIAN LATIMER & PHIL GOODWIN AT DIG IN FIRST SMALL CHAMBER js 03  
W019 DAVE MILNER 2ND PITCH OUT OF FIRST SMALL CHAMBER js 04

### 3015 W025 ALF LATHAM DESCENDING SHAFT. PIC JOHN SOUTHWORTH

### 3215 W015 GORDON PROCTER DIGGING <sup>NEAR</sup> ~~NEW~~ CROSS RIFT. PIC J. SOUTHWORTH



From: Martin BARNICOTT <martin.barnicott@wanadoo.fr>

To: Juan Corrin <uzueka@aol.com>

Subject: Re: Moncobe

Date: Wed, 30 Nov 2011 17:17

Hi Juan

Will do as soon as I get home.

Have just got out of Moncobe this minute.

Went in with Pete today.

We dropped the pitch which was some 20m on from the last survey station, A free hang of about 25-30m straight down into a very inviting sump, if you like that sort of thing. May just be a way on by swimming but doubt it, would want neoprene on to explore. However the sump looks as if it gets bigger as it goes deeper

On the way out we wandered up a few other passages, did not really push as we had no survey gear, was loaded down with rope, drill, bolts etc.

Pete can fill you in when you see him.

Plenty of leads still left to explore.

Cheers

Barny

Cot de Ratgouere

Raoux

31160

Aspet

France

> Message du 30/11/11 16:06

> De : "Juan Corrin"

> A : [m@barnicott.com](mailto:m@barnicott.com)

> Copie à :

> Objet : Re: Moncobe

>

> Hi Barni

>

>

> Can you send me the top file from your DistoX for the Moncobe survey? - I can then produce a svx file and dxf for laying on the surface map. Before any resurvey is

done the tight bits should be made bigger - or so says John!

> Looks like you had a good time!

>

>

> Cheers

>

> Juan



**From:** john southworth <direct.station.limited@hotmail.co.uk>  
**To:** juan corrin <juancorrin@matienzo.org.uk>  
**Subject:** FW: Moncobe  
**Date:** Wed, 30 Nov 2011 19:02

Hi Juan.

Just got this from Barni, you might already have it.  
Cheers John.

> Date: Wed, 30 Nov 2011 18:31:04 +0100  
> From: [martin.barnicott@wanadoo.fr](mailto:martin.barnicott@wanadoo.fr)  
> To: [direct.station.limited@hotmail.co.uk](mailto:direct.station.limited@hotmail.co.uk)  
> CC: [philcygoodwin@gmail.com](mailto:philcygoodwin@gmail.com); [davelmilner@aol.com](mailto:davelmilner@aol.com); [digscaves@yahoo.co.uk](mailto:digscaves@yahoo.co.uk);  
[johnny.latimer@googlemail.com](mailto:johnny.latimer@googlemail.com)  
> Subject: RE: Moncobe  
>  
> John et al  
>  
> Have just exited Moncobe. Went in with Pete Smith.  
>  
> The pitch( 25-30m) dropped straight into a deep sump as partly expected.  
>  
> On the way out we went up the passage partly explored by Brian. Up the left branch it went into big stuff, leads  
in all directions. Lots left to push.  
>  
> Also went up another lead that I said on the survey I could not remember what was there. This went on for quite  
a way and at the chamber we halted in there are at  
> least a couple of ways on that we did not enter.  
>  
> Did not take survey gear so you can add it all at Christmas. Have no doubt there is enough to get over the  
kilometre without even trying.  
>

**From:** Peter Smith <smith\_peter2004@yahoo.es>  
**To:** Juan Corrin <uzueka@aol.com>  
**Subject:** Re: Re: site 2538  
**Date:** Thu, 1 Dec 2011 12:49

Hi

As Barni told me the story, it was explored mostly by him and Phil Goodwin, and a little by Brian Latimer.  
Apart from the fact there are two streams going in opposite directions, there are dry passages going off at  
different levels, so possibilities for much more passage and bypassing the sump. The entrance is on property  
owned by an Irishman called Charlie (!) and is called El Cubillón.  
Cheers







## **MATIENZO CAVES PROJECT**