

# LOGBOOK

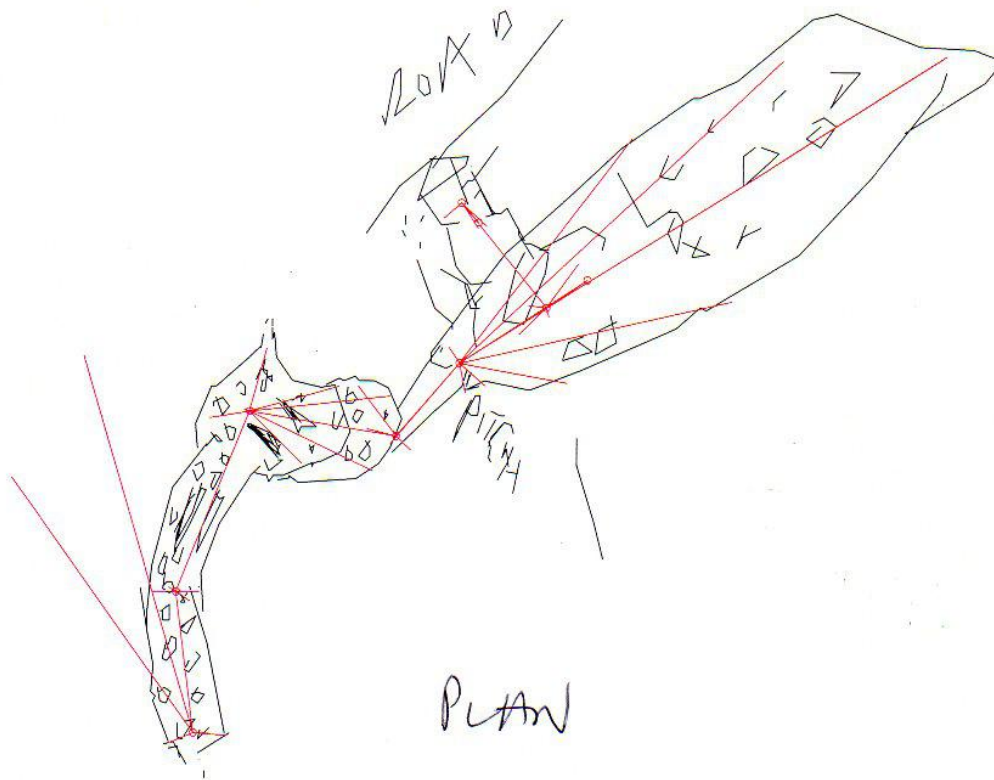
Year: 2009

Season: Christmas : New Year

Logbook pages scanned to jpg then combined into a pdf file using <http://smallpdf.com/>

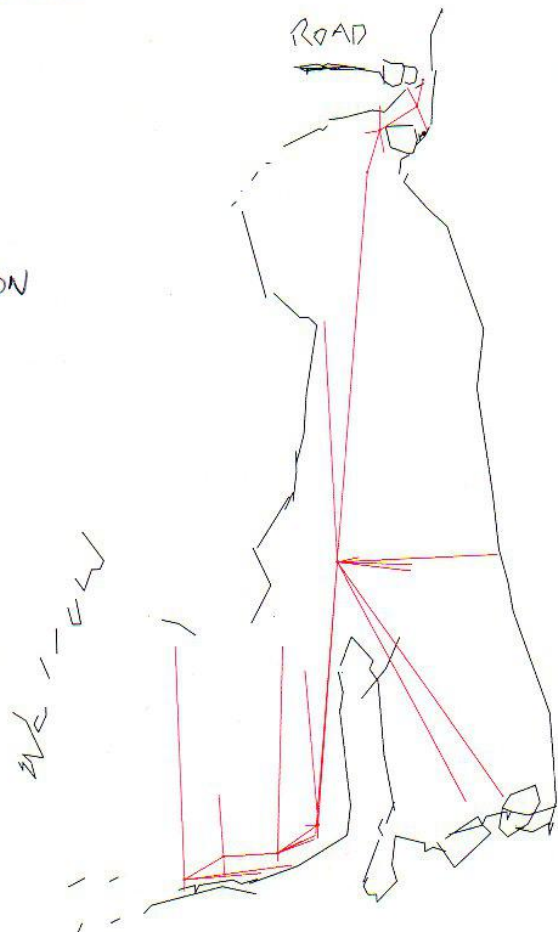
*Juan Corrin, January 2015*

①



Site 3334  
Roadworks Pot.

SECTION





2009                      2010

XMAS - NEW YEAR

①

-----Original Message-----

From: Philip & Hilary Papard <[papard@easynet.co.uk](mailto:papard@easynet.co.uk)>  
To: [juancorrin@matienzo.org.uk](mailto:juancorrin@matienzo.org.uk)  
Sent: Sun, 27 Dec 2009 10:18  
Subject: Matienzo Xmas caves

Juan

Not a lot done at Xmas - more food and drink than caves!

On Sunday 20 December - walk on North Vega with Pedro, Hilary and myself, aim was to locate some caves on map, 795; 796 and 1171 - not found either covered in or shown in wrong place! Some other work done:-

3338

Cave - drop down 7m of cave to stall choke - Alt 341m - 0443203/4795606 - Ent pic ...316

3339

Dig - bottom of large depression with 5m cliff at West side, dig is at back of hole under cliff next to tree - no draught today - Alt 409m - 0448890/4795566 - Ent pic ...318

1283

Pedro's old crap dig (may be on system already) alt 294m - 0449158/4795453 - pic ... 322

432

Cave 432 (we think) - Alt 281m - 0449254/4795495 - Ent pic ....323

24 December - PP and Bob Makin - at dig 3166 to break up sandstone boulder at top of slope in cave. Two snappers used to break block but it was clear it was holding up a large block above and maybe the roof. Left so this top block can be secured before rest of lower block is removed. Very good outward draught (18deg air temp outside) it seems clear this must be coming from Vaca.

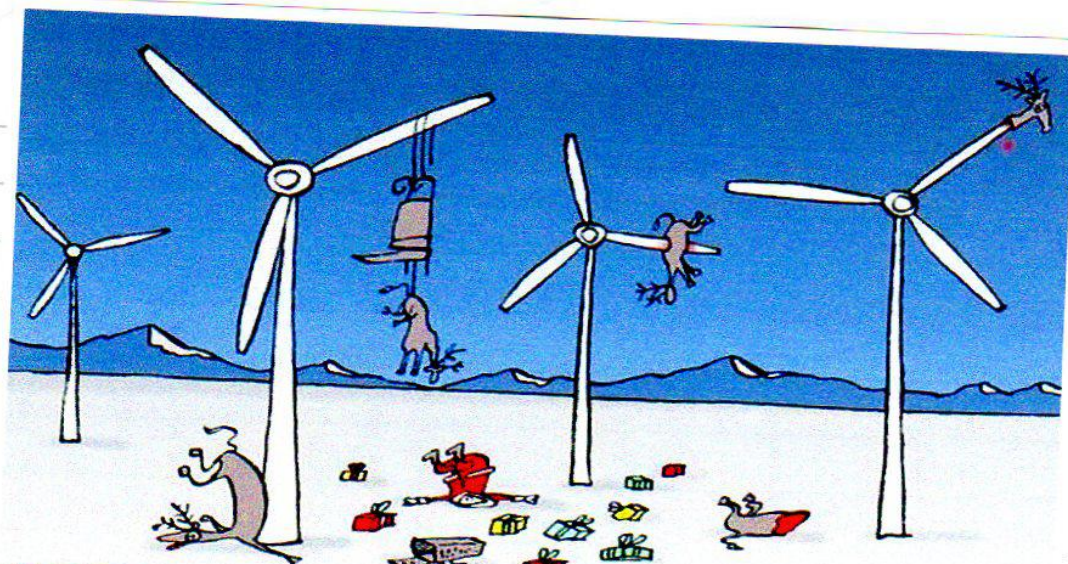
26 December - Roadside Pot - Pedro and PP - Hilary and Bob Makin in support - Big Steve to drunk from day before to attend

3334

Entrance laddered rest done on Rope, only one extra bolt needed to reach bottom of main pitch (about 27m) (see survey for depth) - lots of mud and small rocks probably from road works as hole was opened up. Drop at West end into rift but no go, with continuation very small - draught seemed to be lost. Climbed up some 8m to rift to parallel small shaft less than 1m wide at top. Bolted to give hang in widest part. 13m pitch widened out after 4m landing on boulder slope to what looked like a passage going off, but this closed down after a few meters to a very narrow continuation both down and along - rift is high (10m plus) but does not seem much wider above, but this was not fully checked out and this would be difficult but could be looked at from top of the 13m pitch. Again draught seemed to be lost. Site needs looking at in better draught conditions and if possible with people in Biggo. On way out we were told by Hilary that two Spaniards were waiting to come down! On Surface we found two cavers from the Colindres club who had been looking at another hole lower down road waiting - we had de-rigged by then and told them we had done the Topo etc - so although the cave did not go we did at least do it just in time! Picture of end of lower rift where it gets narrow (bottom of 13 pitch) and three photos of Pete on main pitch. Survey data attached, but I could not open up side elevation fully - let me know if a problem. (date on survey files is wrong as I did not reset my PDA - no mag correction made on PDA)

Phil





THIRJET

ENCULÉS D'ÉCOLOGISTES

Jan 18th Juan + Penny scoured hillside NE of Cuervana  
 El Nasu. ~~Along tracks~~ Track alongside hill cleared  
 to an animal shelter built into hillside. From here to SW  
 and resurgence area was checked out with nothing found.  
 Northeast of the shelter should be checked out.

0076 Jan - Juan in Porton (Campo) - bat photos taken

Nov - Dec 2009 from Pete Smith

492 Photos  
 Abies

- X D1 - 0362 449845 4795890
- X D2 - 0364 449574 4795691
- X D3 - 0365 449579 4795650
- X 3340 D4 - new cave 449534 4795654  
 Scramble up lower cliff to the entrance. The passage straight ahead narrows immediately while a small tube on the left goes to another opening in the cliff. Length 8m.
- X D5 - 0452 449357 4795759  
 4m deep rift with tiny holes between boulders in the floor.
- X D6 - 0700 449373 4795743  
 3m drop to ledge and further 7m choked shaft.
- X D7 - 0792 449320 4795612  
 Two ladders and three rungs of a third reached bottom of this largish choked shaft. Possible parallel shaft goes off half way down the western side.
- X D8 - 0794 449320 4795624  
 3m to boulder pile and frog and a second tight 3m drop.
- X 3341 D9 - 0446 449278 4795748
- X D10 - new dig 449067 4795825  
 A rift has a small entrance at its top end. The small passage continues for a few metres. Needs digging out.
- X D11 - 0449 448967 4795558
- X D12 - 0447 448977 4795549
- X D13 - 0448 448986 4795534

Pete has produced a ppt file for Matienzo trees.

---

Risco file replaced - new surveying

## **MATIENZO CAVES PROJECT**