

# LOGBOOK

Year: 2008

Season: autumn

Logbook pages scanned to jpg then combined into a pdf file using <http://smallpdf.com/>

*Juan Corrin, January 2015*



Some good news. Chuchi's got the date for the cereal grains in Cofresnedo. It's around the 1st century BC. Which I think is brilliant, remembering the agricultural implements from Reyes, which we said were Iron Age too.

Hello,

65

95

It's possible that the basket is the same age. That the cereal grains were taken into the cave inside the basket.

This morning I was with the biologist. You'd have been impressed that she'd printed out a big copy of your area map, at least a square metre. It looked great - when you think of all the information on it.

She wanted resurgences with water which has never flowed on the surface i.e. Cueva is no good, or Boyones. One we looked at was Ramera (the memorial for Antonio), I hadn't been for a long time and was surprised how much water comes out there. She's looking for oligochaeta (worms to you and me), microscopic varieties she gets from the silt. She didn't do any sampling today and we just went round looking at possible sites.

Cheers

Hello,

I'm attaching the 3001 survey plus the survey file if you want to check that it's all right. We took some LRUD's but I haven't added them yet. At the moment the plan is to survey more of Risco tomorrow, so I don't think there'll be any surprises there.

Cheers

Pete

Gmails from Pete : 18/19 Sept '08.

STAY AUTUMN 2008

①

3070 - Cueva Chirras See survey  
3071 - Small hole d=3m

Later.

Chir Camm starts @ 3071, 3072

See PS with 3071

CC finds with site 3114

email.txt

Hi Juan

Slight modifications to survey for cow cave.

The passage at the start of the upper series in the west wall was climbed to a small too-tight passage and a wide but impossibly tight bedding plane. No discernable draught. Passage seen heading off for approx 30m. Would need Mandy or similar and a long pointy persuading stick for further progress. Rift at bottom of passage going off west was not descended and not know how far this goes. Would benefit from a handline to get back out.

The 'tall rift' also in the west wall at the start of the upper series was climbed by Barny. Very tight and awkward. The tube in the roof at the end looks climbable but would require placing a few bits of protection. The 4m 'pot' at the draughting boulder choke area was descended by Barny (picture attached). Led to an area of interconnecting hands & knees crawls in glutinous mud which obviously backs up with water. Needs checking and drawing up properly. There is also a 2m climb up the wall above the 'pot' which appears to head into a narrow rift going west. Again, all this area needs proper documentation.

cheers

Dave



23-10-08

CARIS BINDING, CARMEN SMITH; CUBA DEL TORNO - THE EASTERN EXTENSIONS (AS FOUND WITH PISTOLS & CS & ~~SL~~ ? 2006),

WENT TO CHECK LEFT HAND WATER INLET: TOO TIGHT AFTER 4 M ~ BUT ONGOING, THEN TO FAR UPSTREAM END, [CS TO PROVIDE SCREENSHOT OF SURVEY SHOWING LOCATIONS].

THEN TO HIGH LEVEL EXTENSIONS ABOVE RAMPANT RABBIT TO RECHECK ANY POTENTIAL LEADS.

torno eastern extensions.

From: Carmen Smith <nuclear@omicbomb1.fsnet.co.uk>

To: Uzueka@aol.com

Date: Sat, 25 Oct 2008 11:48

[Attachment]

Attachment

inlet.png

Hi Juan.

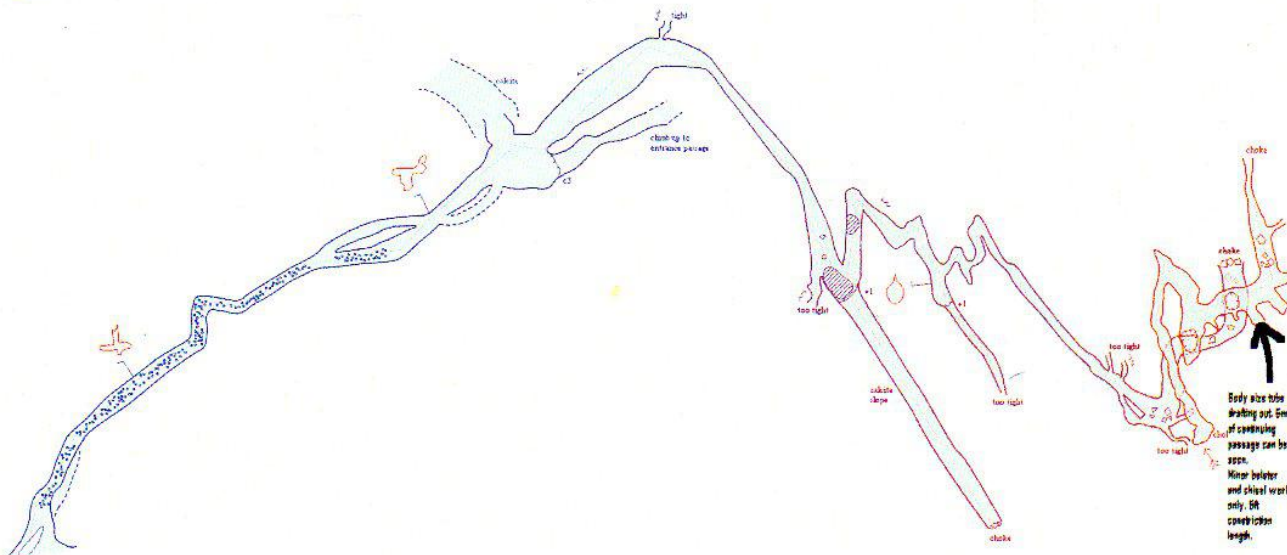
Cant find the relevant survey stuff for the area we went in torno from the eastern extensions.

I also cant open the survey file, it gives an error saying something about using a newer version, i downloaded what i thought would be the latest copy from survey but it still doesn't work!!!

From memory, Paul Stacey was involved in pushing /surveying that area....

Attached is the other location.....Not really heading any where interesting though L

Carm





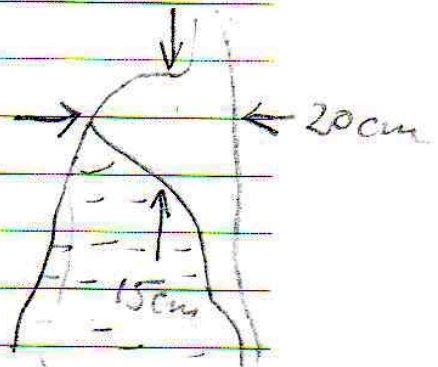
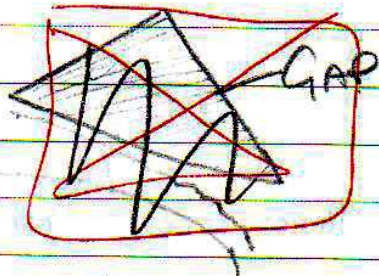
CB+CS: 21-10-08



Turno - Easter Extensions from  
entrance series.

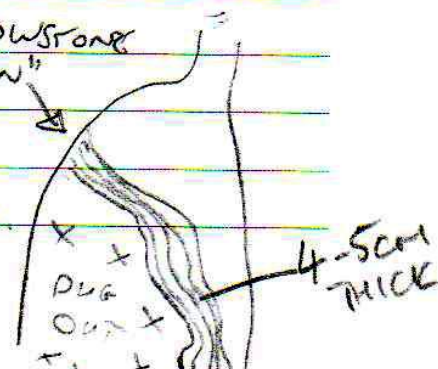
AT THE FURTHEST POINT IN THE NEW  
EXTENSIONS, RIA PASSAGE 1M WIDE  
& UP TO 5M HIGH WITH MURDED FORMATION  
TERMINATES WITH A FLOOR TO CEILING  
STAL FLOWSTONE.

CLIMBING UP TO ROOF LEVEL A TRIANGULAR  
GAP & HEAD SIZE & PART BODY SHOWS  
A CONSTRUCTION OF THE PASSAGE THERE IS  
ALSO A HONCABLE DRAFT GOING INTO  
THE OBSTRUCTION ALTHOUGH IT APPEARS  
TO BE AN INLET.



VALIENT EFFORTS WITH LUMP  
HAMMER & CHISEL WORK "FLOWSTONE"  
THWARTED WITH A LACK  
OF SWINGING SPACE  
PRILL, SPAD, RECOMMENDED

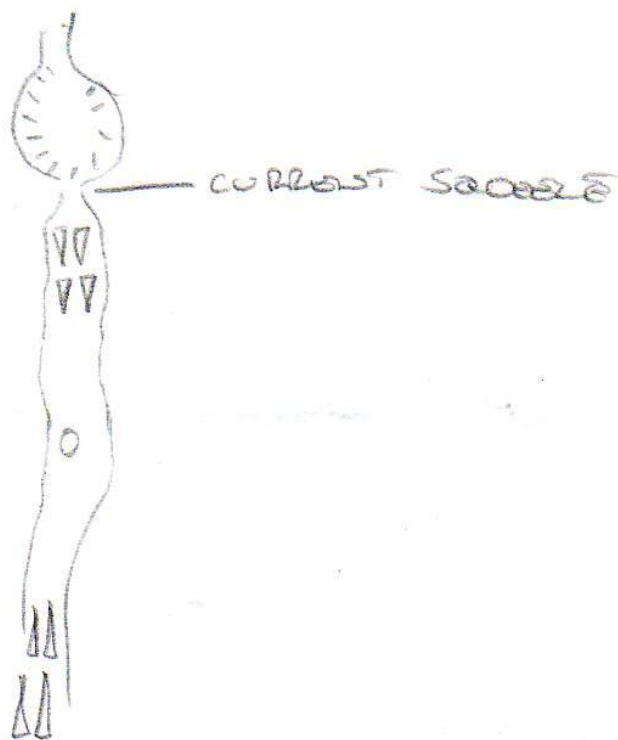
PTD



info@esri-sgroup.se  
www.esri-sgroup.se

**ESRI S-GROUP**

IT MAY BE POSSIBLE FOR A SMALL SLIM  
CAVER TO FIT, THE MAIN PROBLEM BEING  
THE EXIT OF THE SQUEEZE APPEARS TO  
BE 8-10 FT UP IN THE AIR !!





(5)

(7)

22-10-08

CUBADM

CB-CS



TOURIST TRIP IN WATER LEVELS  
HIGHER THAN EVER SEEN BY CS.

2nd

STREAMWAY DOWNSTREAM OF INLET  
OF LHS WAS REVERBERATING - LOW  
BASE !!

HUGE VOLUME OF WATER OUT OF INLET

STREAM WAY CONSIDERABLY DEEPER

LOTS OF POOLS IN ENTRANCE SERIES.  
NO SIGNS OF MAJOR FLOOD ISSUES THOUGH  
HAD A QUICK LOOK INTO MAZE AREA  
TO SEE IF THE PRETTY FORMATIONS REPORTED  
WERE THE SAME AS A TRIP DONE WITH  
AN + JC WHERE C.S. SPOKE INTO  
A VERY PRETTY ROUND CHAMBER OF A  
CALCARE ROW WITH BOOTS OFF.

ITS A DIFFERENT ONE, THE CHAMBER  
STILL NEEDS REFINING, - IT WASNT  
SURVEYED LAST TIME COZ A MIGRAINE  
STOPPED PH1 - POOR CS!



----- Mensaje reenviado -----

De: Lea Ziebold <lea.ziebold@ono.com>

Para: Peter Smith <smith\_peter2004@yahoo.es>; artcaves@yahoo.es

Enviado: jueves, 23 de octubre, 2008 11:34:19

Asunto: 08-10-23 protection of waterresources

Dear Peter, dear Ian,

in the annex you will find a paper which I sent to "Arca" on the 10th of October. They are breeding on it. If you find time to read the paper I appreciated very much if you corrected errors and made amendments.

I assume that up to now there is no knowledge whatsoever which surfaces contribute to the water that finally enters in the drinking-water-system. But I suppose that, based on your empiric experience, you might define a minimum of area which should be under protection. I am interested very much in your cooperation on that topic.

Ian told me yesterday that he had made a photo from a lorry that had been driven into a "tuerca" and which had been censured. Could you please send me that photo? And that recently a farmer had thrown two dead calves into another hole. I suppose that also in this case there exists a photo. Can you send it to me too? If you have more documentation of cases alike: is this documentation accessible and where?

If ever you pass by in barrio San Antonio and see the green Mazda outside you are welcome to knock at the door and insist knocking because I might not hear it at once working in the attic or in the garden. I will be pleased to show house and garden and take a drink with you.

Lea

----- Mensaje reenviado -----

De: Lea Ziebold <lea.ziebold@ono.com>

Para: Peter Smith <smith\_peter2004@yahoo.es>; artcaves@yahoo.es

----- Mensaje reenviado -----

De: Lea Ziebold <lea.ziebold@ono.com>

Para: Peter Smith <smith\_peter2004@yahoo.es>; Ian Chandler <artcaves@yahoo.es>

Enviado: sábado, 25 de octubre, 2008 2:08:36

Asunto: 08-10-25

Dear Ian, dear Peter,

Today I have been searching for the Torca del Hombre. My neighbor Antonio, who knows a lot of people, went with me firstly to Campos Delante where we talked a little while to the local people but they had never heard of the Torca del Hombre. However, they knew something about a Sima del Hondo and therefore we thought that it might be misunderstood somehow. We saw a good example of Dolina used as rubbish deposit which brings me to ask, if we could add any type of Dolina to the subjects that should be protected together with the subterranean (cave) heritage?

Anyhow, we drove on in direction to the depression of Cobadal to a Manolo which was supposed to know all about Torcas and Simas of the zone and this man, his whole family, knew about the Torca del Hombre telling, that it was on the Monte de la Canal, but he had an new hip done before last week and wasn't able to show us the Torca. He says that it is difficult to find. I was told that the Torca was named after an accident which cost the life of a man and his wife. Antonio says that people report that if a cat falls into this Torca it comes out in the Aguanaz.

We went into Cobadal and crossed to Riaño, drove down direction Hornedo and from there we drove up westwards again to a man named Paco Valentín (74) who also was supposed to know everything about Simas and Torcas. We found him close to his house sitting in a meadow and watching his Limousine Cattle. He is ready to show us the Torca del Hombre. He described the direction like this: firstly to "los Urros" (Torca los Esterregada), then casa de los Colombianos and from there right up on top of the mountain where we saw an isolated round tree (invisible in white part above right of photo). Behind this tree 200 meters lays the Torca which is told to be 4-5 meters wide and has a shaft that goes down vertically very profound. But as he doesn't talk to those Colombianos he will lead us up more to the right side of the mountain any day we like. Unfortunately I did not ask if he has telephone or not.

We left him driving down northbound "siempre recto" and came out steep down short before Barrio San Antonio on the site of the last bridge that crosses the river Riaño, where a waterpump as part of the Aguanaz project had been installed in 2005 (small yellow house on the left side of the river). Two men of Gujorsa SL Trabajos Forrestales y Medioambientales distributed huge quantities of herbicides "Rendul Energic" (without mask) beyond the high voltage line to this pump telling they have admission by the Cantabrian Government to do so at a distance of 30 meters to any river. Medioambiental work.....

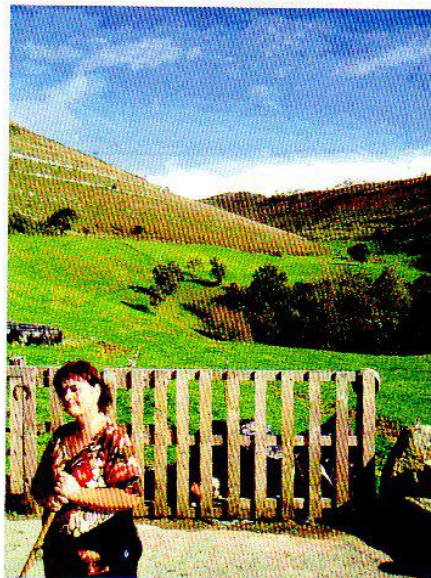
You told me that Juan Corrin comes to Matienzo next week. So perhaps he would like to see the Torca del Hombre too.

Yours  
Lea

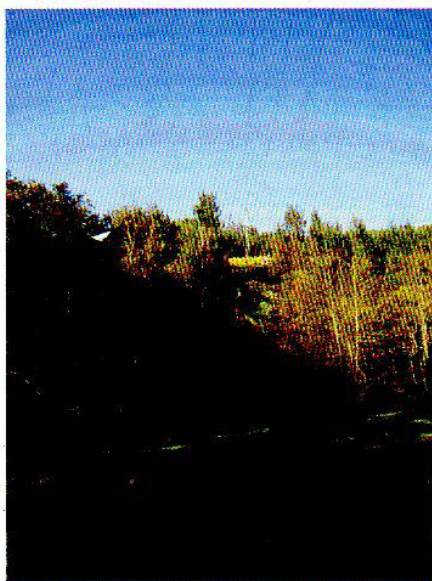




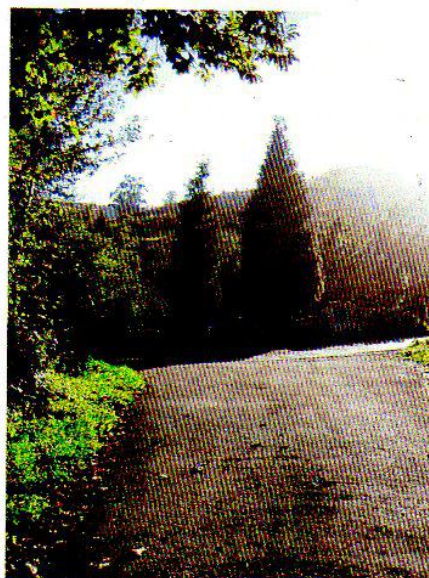
dirección\_Torca\_del\_Hombre\_013.jpg



Monte\_de\_la\_Canal\_vista\_desde\_norte\_012.jpg



Sondeo\_plan\_aguanaz\_015.jpg



To\_Pacos\_house\_go\_right\_014.jpg



Torca\_de\_la\_Basura\_006.jpg



~~6~~ FOLLOWING 6 PAGES FROM Dave Gledhill  
re Summer explorations in Vaca 2889. Incorporated into  
survey + web site ✓.

## Can you hear the buzzing? - Torca La Vaca – Site 2889

Initial 'find' by Bill Sherrington, Johnny (Dingle 3) Lattimer, James (Jimmy Penrith) Carlisle & Dave Gledhill

Lies and general untruths by Grave Deadhill

### Historical note:

*Named following an incident whereupon, after a quiet moment of group reflection by team 'B' on their surveying work up until that point, the serenity was disrupted by the distant but steadily approaching sound of what appeared to be an angry wasp, possibly one that was stuck in a bottle, just to get it really cross, but was in fact team 'A' who on finding that their original impressive, dry, high level, monster-passage grabathon survey-fest (no we are not calling it land of the giants 'JL 2008') had crapped out, had decided to proceed in search of team B, drawn vespian-like to the other team's virgin passage pushing pursuits as if they were a large jam sandwich that had been dropped on the sun-drenched picnic blanket of speleo-destiny. Read on.....*

Heading south from Bassenthwaite on lower stream level, shortly after 'Pablo's Peppers Passage' & 'Gledhill's Goer' (it didn't), the stream passage becomes slightly constricted due to some large fins of rock rising approx 3-4m from the floor in the middle of the passage. These can be passed by an easy squeeze on either side. Immediately after these fins, the stream passage reaches a T-junction at which the water gets considerably deeper than previously and necessitates the need for a swim. To the left, the passage continues a few metres before a mud bank rises from the water and the walls close in to form a rift, too tight for further progress. To the right, the stream passage continues but appears to be as a canal in the bottom of a rift passage (*Don't be an idiot*), the walls of which rise vertically for around 4-5m before closing in until they almost, but don't quite meet (this section was seen but not explored by team B due to lack of neoprene).

Returning back to the fins before the t-junction, an easy climb up the right hand side of the fins emerges on a rock pedestal above the T-junction in the passage below. To the left is a short rift passage that rapidly closes down too tight. To the right, a passage containing much loose fallen rock heads off, drafting towards you and rising slightly into an enlargement beyond. From the top of the fins/pedestal to the right-hand passage requires a careful step over to and traverse along ledges, between which is a gap through which the canal below can be seen (care – very thin in places). The rock in this area is very loose and friable. An easy scramble up some boulders, emerges into a large chamber (*Fisticuffs in Botchergate*). The chamber is rather confusing to describe as it has continuations in many directions and height.

### On entering the chamber:

#### To the left:

A climb up over boulders leads to an ascending rift passage. Walls are solid but slightly slippery, coming together in places to form a partial floor, but opening up again to reveal drops below. Climb rift by bridging. The top of the rift opens out into a large, level, square section passage with dry mud floor with a few fallen blocks. The end of the passage cannot be seen from this point, lights unable to reach that far, but it is obvious that it enlarges considerably. There is also a strong and consistent draught blowing towards you. The top of the left hand wall has numerous amounts of





yellow flowstone curtains and stals, but the size of these is hard to judge or appreciate fully due to the sheer size of the passage. The floor of the passage then drops away steeply.

At the top of slope down to the continuation of the passage, a passage enters from an acute angle in the left hand wall. A careful step over the slope and round the corner leads into a dry, sand floored easy walking passage with numerous white stals and flowstone on the walls. The passage rises for a short distance, almost doubling back in the direction of the main passage, before it levels out and swings slightly to the right. The passage increases in height and width, but a deep rift in the floor with sloping sides of sand precluded further exploration at this point. Note – the initial exploration of the cave found this passage to be drafting outwards noticeably. The second visit found no such draught discernable; outside temperature slightly cooler on second visit.

Back in the main passage, an easy scramble down a dry mud & boulder slope against the left hand wall allows the continuation of the now level passage to be explored. Dry mud floor has many suitcase sized blocks, many of which are covered in flowstone and appear to have fallen from the left wall and/or roof of the passage. Passage continues with steps up/over/around blocks until level dry mud floor swings slightly to the right and then starts to descend to merge with a passage coming in from the right that has been running parallel to, but at a lower level than the passage just described. At the point where the two passages merge, the left hand wall has a series of very well decorated stal & column pretties which continue into the end of a short blind aven.

**To the Right:** (This section cannot be guaranteed as 100% but it is included to try and give an idea as to what the hell happens in this rather complex area).

Back in 'fisticuffs', turning to the right leads to a walk over fallen blocks, followed by an easy slope down which then levels out into easy walking, heading back in the direction of Bassenthwaite, but at a higher level than the stream passage. This passage is purported to connect back to the section in the upper series that brought the original survey by team 'A' to a halt.

#### **Straight on:**

A careful scramble down over large boulders leads to a large wide boulder-strewn passage that swings round to the left before levelling out and then running parallel with, but at a lower level than the high level passage described in 'To the Left' (see above). There are numerous ways through this section, but a traverse around the right-hand wall has proved popular. This lower level passage starts to rise and eventually merges with the higher level passage, which comes in from the left.





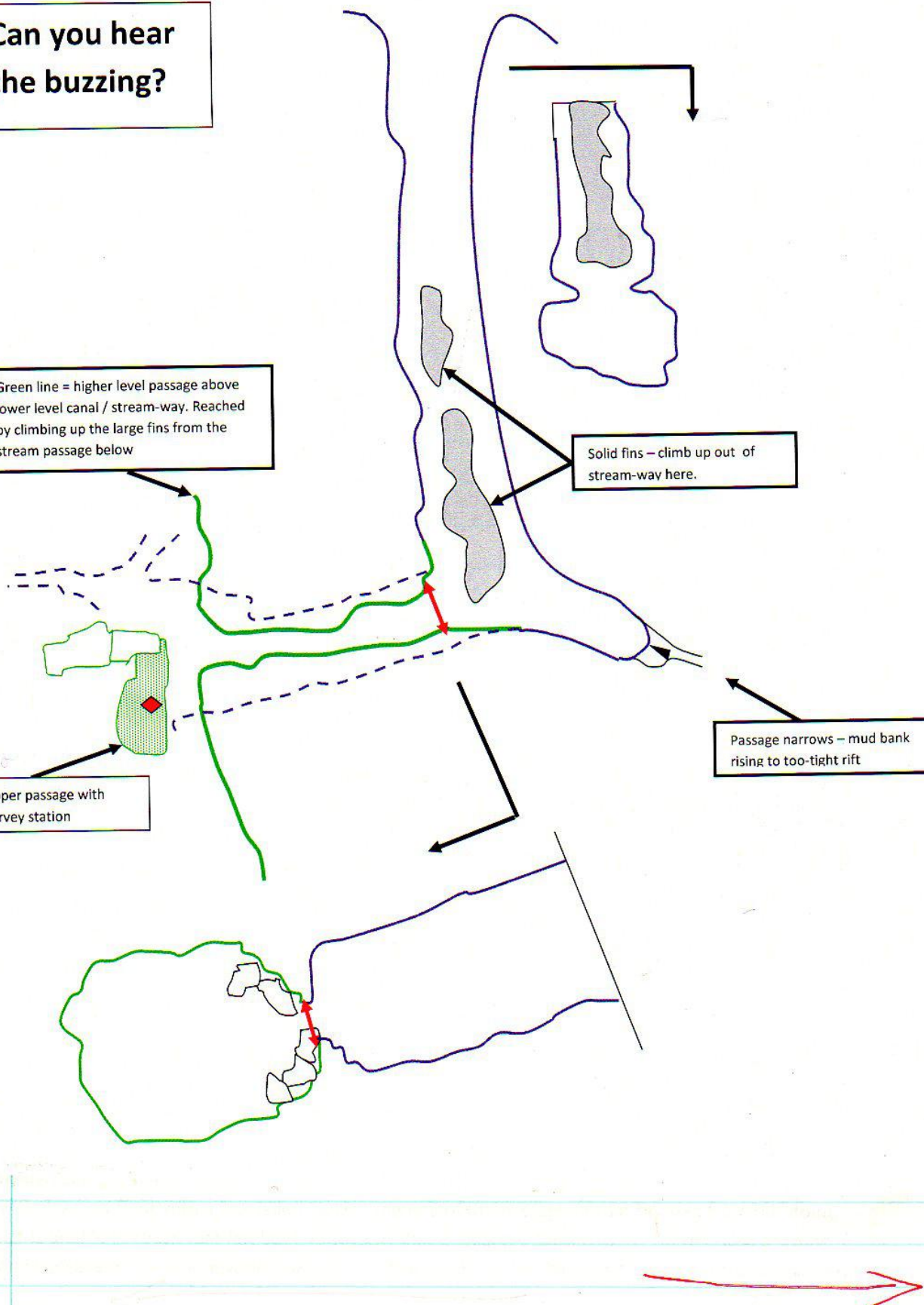
Can you hear  
the buzzing?

Green line = higher level passage above  
lower level canal / stream-way. Reached  
by climbing up the large fins from the  
stream passage below

Solid fins – climb up out of  
stream-way here.

Slab in upper passage with  
cairn / survey station

Passage narrows – mud bank  
rising to too-tight rift



Lilac line = 'buzzing' & 'don't be an idiot' below

Leads down to passage that connects to 'team A' upper series section marked 'care'.

Solid fins - climb up out of stream-way here.

This area has been referred to as 'Fisticuffs in Botchergate'

Passage descends over boulders - heads south with traverse/scramble along west wall. Reconnects with the higher level passage running parallel to the east - which descends to rejoin this passage.

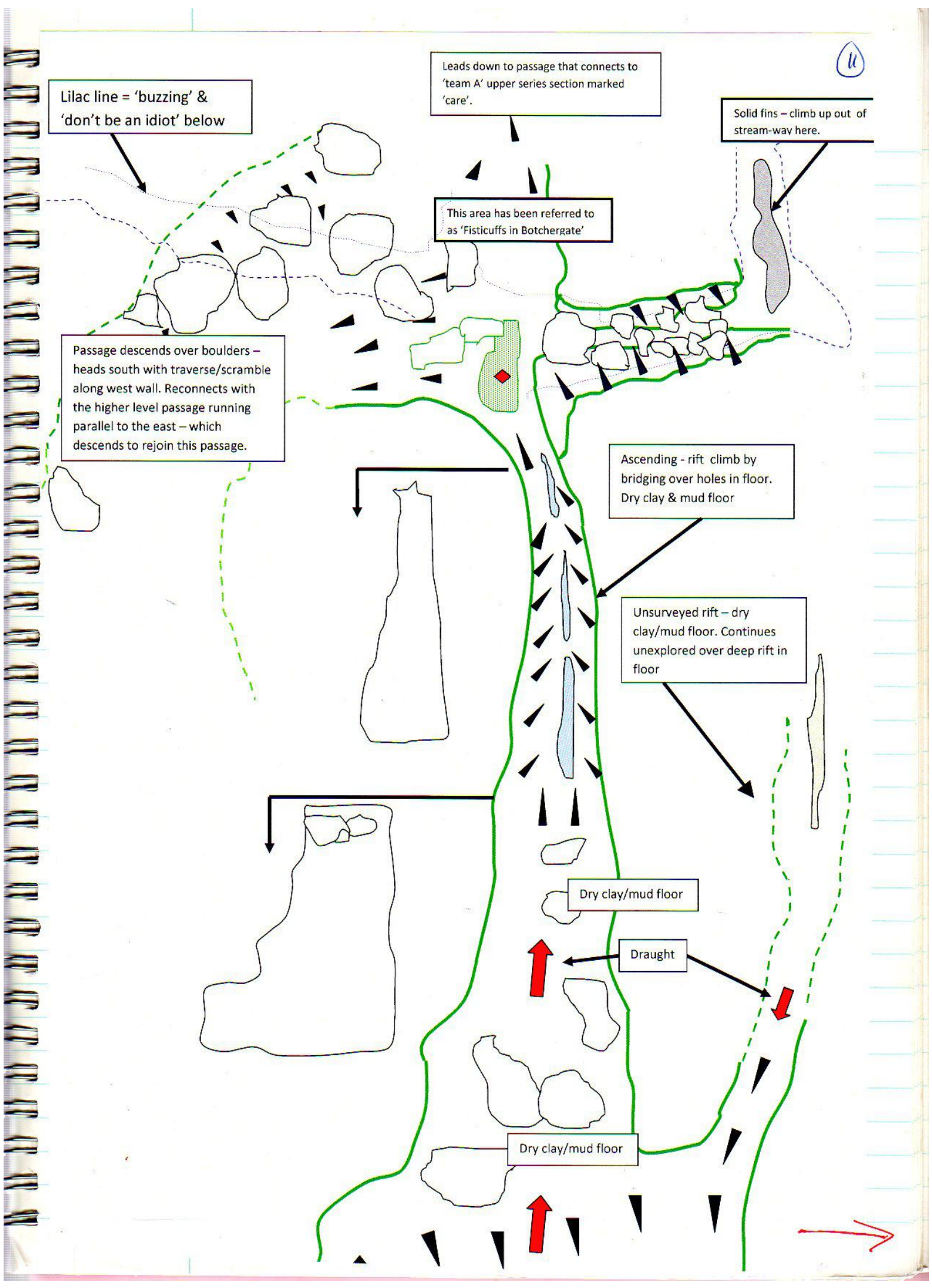
Ascending - rift climb by bridging over holes in floor. Dry clay & mud floor

Unsurveyed rift - dry clay/mud floor. Continues unexplored over deep rift in floor

Dry clay/mud floor

Draught

Dry clay/mud floor





**'Unentered rift passage going off at 170°'**

**(Since entered by Barny & Deadhill)**

**Near start of new upper level series after Bassenthwaite - Torca La Vaca**

**Unsurveyed as yet – needs more detailed survey of this upper series which actually appears to be on three different levels.**

High rift passage with wet sand floor. Initial easy walking leads to 2m climb up over boulder. Rift narrows requiring difficult traverse at higher level on mud coated walls with little grip. Floor regained and rift height increases. Walls become rough/sharp. Floor narrows again requiring further higher level but relatively easy traversing.

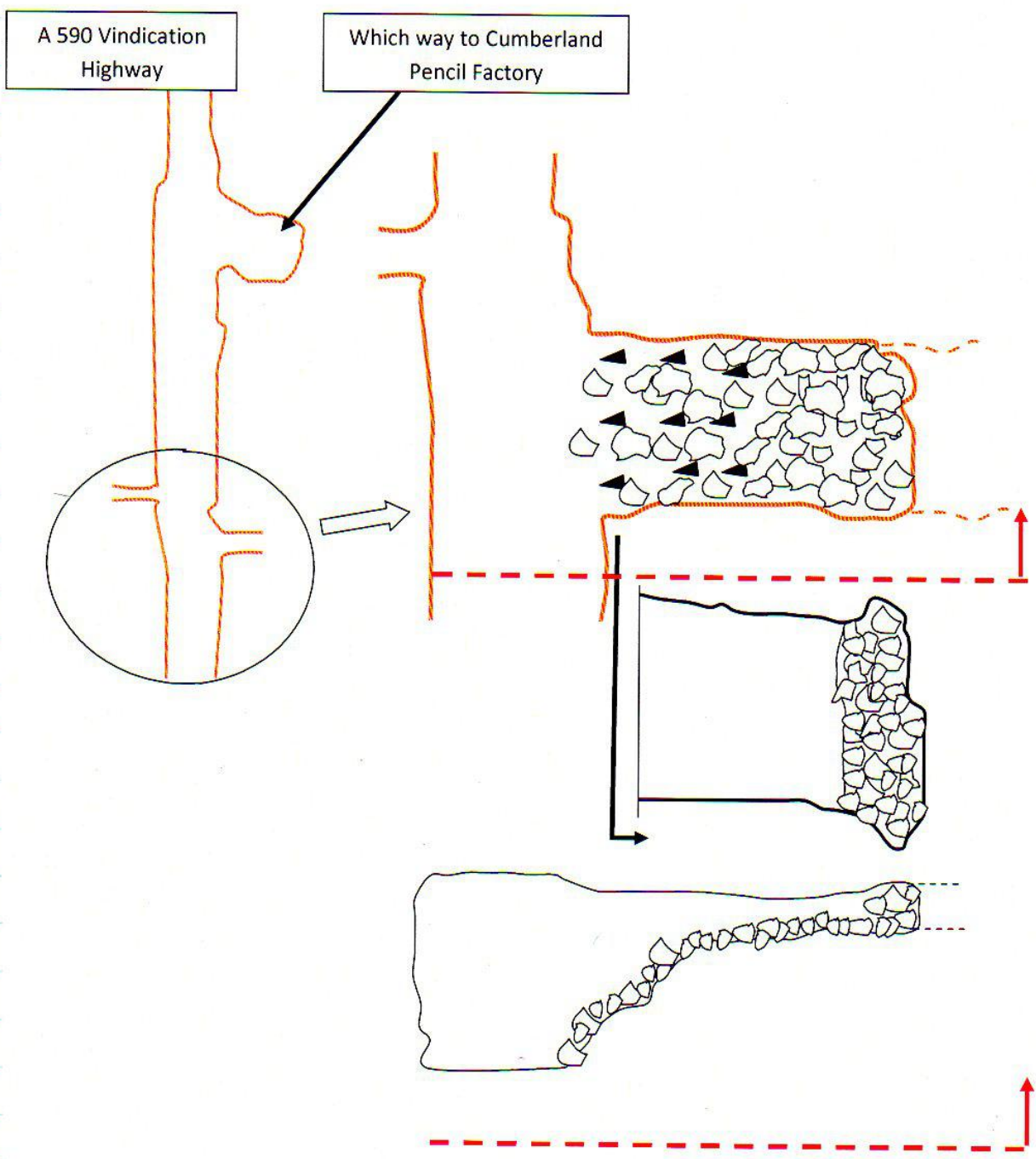
Rift meets cross rift – possible climbs up in this area – high avens.

Left is too tight. Right leads back to main upper level passage but at a higher level (10m ?) than that in which rift was entered.

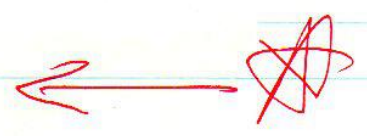
Difficult to locate position due to lack of marked survey points



# 'Low Rubble Passage' on 'A590 Vindication Highway' Torca La Vaca



Climb up loose rubble slope from main passage.  
Levels off into low roofed passage, ending in complete choke.  
Appears to continue but no sign of draught





28/10/08. Tran + Pete into Reader to look @ formation  
damage. See Google Group + replies.





Antenna continued ↓

27th Oct.

Juan + Pete into Reñada - Blood Alley + Sanatogen Passage.  
Google Group post:

Pete and I went into Cubio Reñada (site 48) today to look at the effect of more than 40 years of caving on the system. We tried to "think American" but with mud up to knees and water up to waists in the entrance passages this proved rather difficult. We went as far as Sanatogen Passage and spent some time looking around the Blood Alley area. We were fairly happy about the damage to the cave walls and floors - most traffic seems to have kept to the same trails and damage to formation appeared minimal - there was some mud (and candle wax!?) on some of the red stal but this should be quite easily cleaned off.

What was very disappointing was the damage caused to Blood Alley. This cleft is about 80m long and generally a 2m wide, mainly inactive streamway in black limestone and "popcorn" - a passage in the floor very close to the main trade route - which had a red / orange floor with orange crystals in pools and red calcite flows on the walls. The floor is now coated with mud and the pools are lined with the same brown deposit. The dismal scene is not anyone's "fault" - it just happens to be very easy to miss the route out when coming from Azpilicueta and wander down into Blood Alley. Any mud on boots and clothes forms a film on the floor and gets washed further down and into the pools. The evidence is shown here at <http://www.matienzo.org.uk/ugpics/0048-2008a.htm> where a photo taken by Frank Addis in 1977 can be compared with what we saw today.

The "good news" is that it may be possible to clean up the whole alley with medium pressure water (from backpacks), pumps and sponges, and a lot of cavers with changes of clothes and goodwill. After a cleanup, the Alley could be taped off and cavers directed to the trade route and a "viewing platform" a few metres above the cleft where the pools and floor could be appreciated.

If a laissez faire attitude prevails in Cow Pot we're going to end up with muddy / ruined formations before the cave is visited by Spanish groups, including Hornedo locals. We should be taping these routes, columns and other cave resources.

1st Nov. Pete + Juan + Chuchi + Anna + Rocillio(?)  
to 2 Skulls Cave (site 2741) to remove  
bones discovered summer 2007. Pete used gloves to slip transfer  
of DNA. Forensic didn't turn up so Chuchi had the bones.  
and now Pete has them. Chuchi, Pete + Juan into Basandas (423) to look at  
charcoal, other artefacts etc + took a few photos.



✓ **Site 3058** 30T0446093 4800045 alt 250.1m

9th Oct Corrections, Corporales is site 2068. 3058 Wasn't in right place on map relative to Corporales. Re gps'd 3058, should be at 0446072 4800108. Approx alt 265 from map. (GPS read 263m)

**Site 3061** Whilst over at Cueva de Corporales area on the 8th Aug we came across a site we thought was 2069 (going by the description and location). However after seeing the photo of 2069 it is definitely something new, or at least unrecorded. Nothing too exciting though! Location 0446103, 4800031 from SigPac. The site is a dig a few metres below the farm track and clearly visible from the track. It is next to a single tree and is covered by a small concrete slab with 2 rebar handles, together with a large rock. Under these a rubbish littered slope descends a couple of metres. Thinking this had already been recorded and in sight of the farm we moved on.

9th Oct 08 Photo of entrance CC. GPS location WP432 5m acc Site 3061 0446093 4800031 alt 250m

**Site 3072** 5th Oct 2008 WP408 Acc 9m Site 3072 0447575 4801226 (approx 125m alt from map)

4m deep 1 large and 2 small rifts by track all choke. 2 photos taken CC a) John S and Alf L in entrance shake. b) John S in shake.

**Site 3073** 5th Oct JS CC PG GP AL WP409 acc8m Site3073 0447586 4801296 (approx 120m alt from map) 3m long sloping cave to choke. No draught 2 photos by CC, Alf in shake and by ent.

**Site 3074** 5th Oct 2008 WP410 acc 6m is edge of field at end of track going to hole 0447442 4801385 approx alt 120m from map Site 3074 is at 0447427 4801385. A 2m deep draughting hole in boulders, under rock wall at western end of shake.

Quite promising. Photo taken CC, Gordon Proctor laid in hole.

6th Oct Alf and Gordon, Now steps down over mud covered boulders. Vertical drop about 4m to a mud boulder floor.

Cuts back under southern side by about 2m, to a wall, the roof and sides leading here are boulders as is the floor! Major undertaking to make further progress.

**Site 3075** JS CC PG GP AL WP411 acc12m Site 3075 0447520 4801407 (approx 125m alt from map)

Rift approx 3m deep with stones rolling down a slope maybe the same again? no draught. 2 photos a&b of entrance by JS.

**Site 3076** 5th Oct 2008 WP412 Acc 7m 0447589 4801389 (Alt120 from map) WP is 5m south of depression and 4m above it. Therefore Site3076 is 0447589 4801394 alt 120 approx. draughting dig in boulders. Reasonable draught.

**Site 3077** is 2 narrow rifts approx 15m NE of site 3076. 3076=0447589 4801394 approx alt 120 from map. Therefore 15m NE is 12m N and 9m E. 3077=0447598 4801406 approx alt 120. These are very small 3m deep with slight draught. Photo a by JS. Photo b by CC.

**Site 3078** 5th Oct 2008 WP413 acc 6m 0447619 4801386 approx alt120 from map. WP taken 3m above and 4m S of hole therefore Site 3078 at 0447619 4801390 approx alt120 Draughting sloping hole under boulders. Photo John S in hole, taken by Phil Goodwin.

**Site 3079** JS CC PG GP AL WP414 acc5m 0447546 4801340 alt123m. Hole is 8m NE and 5m below wp therefore Site 3079 is 0447550 4801346 alt 118m 3 small holes all choked. Hazel tree in shake. John S outside holes taken CC.

**Site 3080** 5th Oct 2008 WP415 acc6m Site 3080 0447503 4801302 approx alt130 from map. Steep sided shake surrounded by brambles contains rock face with undercut blocked by peaty leaf mould. Worth a quick dig.

**Site 3081** 5 Oct 08 WP416 acc5m 0447531 4801111 approx 150m alt from map. WP is at junction of bulldozed track. Site 3081 is 3m South at 0447531 4801108 and is a cave entrance under a sandstone bed. Shaft below is estimated to be 15m deep but needed tackle to descend. To the north of the WP and in the corner of the junction of the tracks is a narrow hole maybe 10m deep.

Photos by CC b) John coming back out and a) hole in corner of track. As ever, we found this, the best prospect at the end of the day..

8th Oct Phil and Alf. Didn't have enough tackle to get down. Shaft with a loose top, now estimated to be about 30m deep.

9th Oct Phil and Alf armed with more kit bolted top. Phil descended what is probably about a 30m pitch to landing in a wide rift. Both ends narrow in. Chokes in one direction but the other leads into a parallel shaft where the way on down is currently blocked with boulders. A clean washed passage appears to be approx 3m below. Needs a little bit more work to get in. Return planned at Easter 2009.

See New Trip

**Site 3082** 6th Oct 2008 WP417 Site 3082 0447660 4801952 70m alt from map. Undercut goes under 1 to 2m needs digging to progress. Too small to enter without digging. Photos of ent CC.

**Site3083** JS PG CC 6th Oct wp418 Site3083 0447617 4801856 90m alt from map. Cave ent leads to narrow vertical rift, maybe 15m+ deep. Photos by CC, a) John in Entrance, and b) Phil with entrance in middle of shot.

**Site 3084** 6th Oct 2008 nrWP419 Site 3084 0447487 4801776 65m alt from map. Bottom of gully just outside field was very cold on a hot day with cold draught coming out of holes in boulders. Evidence of intermittent stream in channel below. Looks like a flood overflow. Photos taken CC, Phil G around one of the points the draught emerges. There is a very small phreatic tube in the rock face a few m from where Phil is stood.



7th Oct Gordon and Chris, good poke around in boulders, got inside the boulders, about 3-4 m above the lowest point at which any water might resurge. From in here you could see a very low gap back to the right (facing up gully), across the gully. Gave the impression that the water comes from higher up the gully running under boulders at low level. Worth checking in a flood. Other holes opened up slightly higher in the gully. The top hole seems most promising, but requires some engineering work to get further down amongst boulders. The draught here is very strong even on a cool day outside.

**Site 3085** 6th Oct. JS PG CC nr420 acc6m Site 3085 447481 4801727 85m alt from map. Photo taken CC of JS in Ent. Low cave goes in 2m. Cave is in east side of gully.

**Site 3086** 6th Oct 2008 nrWP421 6m acc Site 3086 0447482 4801698 90m alt from map. Small hole down under bedrock. Photo looking towards entrance and of entrance. Taken by CC. 5m to the South is Site 3087.

**Site 3087** 6th Oct JS PG CC nr421 6m acc. Site 3087 0447470 4801693 90m alt. Photo of hole taken by CC. 5m north is Site 3086.

**Site 3088** 6th Oct 2008 WP422 5m acc. Site 3088 0447653 4801781 115alt. Small entrance, passage floor would dig out. Goes 4m to a drop. Draughting in, note, caves lower down in altitude were draughting out today. Photos taken by CC. a) John S and Phil G at the entrance. b) The passage. c) General location shot taken looking back from cave towards a house on the hillside below.

**Site 3089** 6th Oct JS PG CC nr WP423 Site 3089 0447821 4801798 95m alt from map. Entrance is in a shakehole that has been used as a rubbish tip. Photo of JS in Ent taken by CC.

7th Oct Alf, Phil and John. 2.5m vertical climb down on rubble floor, then doubles back underneath for approx 14m down a rubble slope. Then enters a narrow chamber about 5m tall with a restricted exit. A very small person or some engineering work required to progress. At this point rocks can be thrown down the slope and round a corner for a few meters.

**Site 3090** 6th Oct 2008 nr WP424. Site 3090 0447767 4801802 95m alt from map.

Photo of entrance taken by JS before it was dug out the next day.

7th Oct Alf, Phil and John. Short dig through soil and clay gave access to a hands and knees crawl. Consists of several interlinked phreatic passages on the same development horizon. With 2 small shafts to as yet unreachable lower levels. Depths of shafts estimated at 15m. One prospect not pushed as it might have taken 5 mins to dig! Needs further work.

**Site 3091** 6th Oct JS PG CC nr WP425 6macc Site 3091 0447774 4801771 95m alt from map. Partly choked shaft rocks fall 10m.

a) John S and Phil G at entrance. b) Boulders blocking entrance. taken CC.

7th Oct rocks removed, Phil G descended shaft is 8m deep with a ledge at 6m. Impossibly tight phreatic tube crosses the shaft at 6m. choked at 8m. No prospect of digging this.

**Site 3092** 6th Oct 2008 nr WP425 6m acc. Site 3092 0447779 4801764 95m alt from map. Small cave entrance with horizontal roof. Photos taken by CC. Draughtless, possible dig.

**Site 3093** 6th Oct JS PG CC nr WP426 5m acc. Site 3093 0447813 4801731 100m alt from map. Possible cave blocked by small rocks, worth a quick dig. Photo taken CC.

**Site 3094** 7th Oct08 PG JS wp430 acc 6m Site 3094 0447380 4801817 70m alt GPS Ent is approx 3m off road on right side looking uphill. Vertical tight rift descends 3m at about 45 deg angle to a very low sandy crawl. Bags of rubbish in bottom of hole.

**Site 3095** 7th Oct 08 CC GP WP427 6m acc. Site3095 0447405 4801853 56m alt from GPS. Short cave by side of road to choke. Photo of entrance taken by CC.

**Site 3096** CC GP 8th Oct 08 WP428 7m acc. Site 3096 0447496 4801137 100m alt from map. Small cave entrance under sandstone. Rift approx 1.5m high, boulders in floor trench. Could be dug. Photo of Gordon Procter at entrance taken by CC.

**Site 3097** 8th Oct JS Site 3097 0447432 4801062 acc 20m alt 150m from map. Photo by JS of ent. Small tight descending rift about 2m deep to choke. Poor prospect.

**Site 3098** CC GP 8th Oct WP429. Site 3098 0447374 4801057 alt 139m from GPS. Shake in woods. Holes down in boulders sounds very hollow. Photo of entrance taken by CC.

**Site 3099** CC GP JS 9th Oct 08. Wp431 5m acc. Site 3099 0446072 4800006 254m alt from GPS. Hole by side of road under slab, below a short walled section of bank. Had various dead animals in it so was not descended. There would be a passable shaft here for anyone with a strong stomach. Photos taken by CC. a) The entrance, b) Gordon procter by ent. c) Gordon pointing to ent.

**Site 3100** CC GP JS 9th Oct08. WP434 6m acc. Site 3100 0446293 4800302 260m alt from map. Rock walled shake with trees, hole in one corner a few metres deep. Photo taken by CC. Hole is in middle of this shot below silage sheeting.



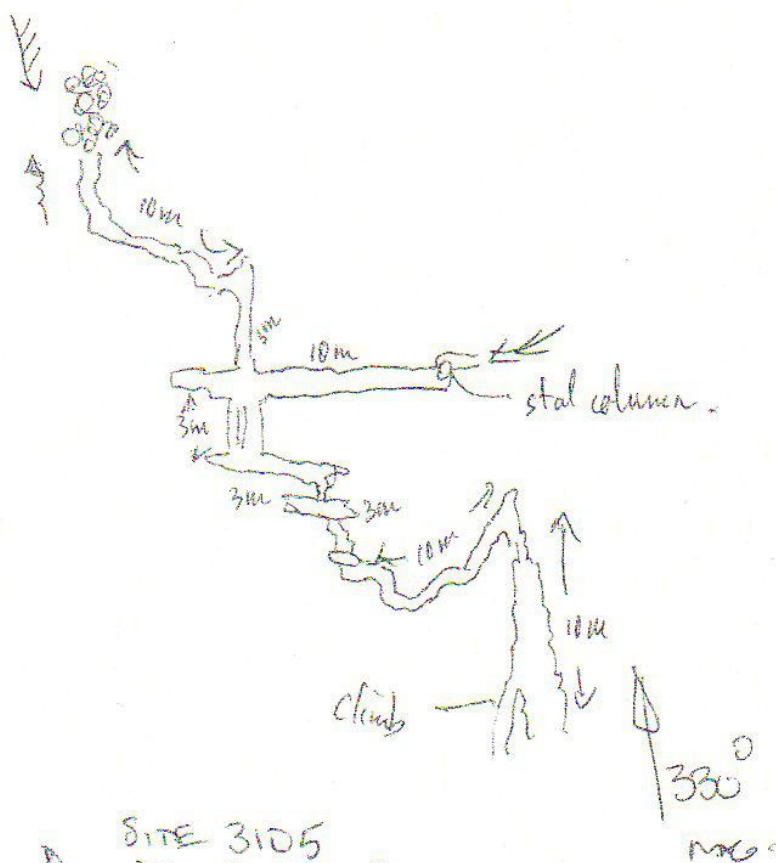
**Site 3101** 22m acc on JS GPS. Site 3101 0446163 4800265 alt 230m from map Muddy slide down 4m into small chamber. very small tight exit in floor. Photo taken JS

**Site 3102** on JS GPS acc 5m. Site 3102 0446126 4800297 alt 225m from map. Small hole in earth, 2m deep possibly choked. No solid sides visible. Photo taken by JS.

**Site 3103** CC GP JS 9th Oct 08. WP 435 acc 5m. Site 3103 0446125 4800324 224alt from GPS. Narrow drop into cave entrance. Covered with boulders, located inbetween twin shakes in valley bottom. Photos of Gordon Procter in entrance, taken by CC. Quite tight but goes on, draughts. Needs a thin person to progress.

**Site 3104** CC GP JS 9th Oct 08. WP436 5m acc. Site 3104 0446008 4800296 241m alt from GPS approx 8m deep. Narrow rift in left hand side (looking uphill) of sunken lane. Up on bank above this is a small rock sided shake with mature trees in it. No way on in shake. Photos taken by CC.

**Site 3105** CC GP JS 9th Oct 08 WP 437. 0445559, 4801344 85alt from map. WP is on side of shake where entry is possible. 2 sides of this shake are cliffs. Photos taken by CC showing a) John S by dig site, b) John (middle of shot) investigating possible hole at higher level. Nothing seen at high level. c) Short dig should get us in at the bottom. 10th Oct 08 CC GP JS AL PG. Gordon dug in, in half an hour. Entry by side of large boulder gives access to a large breakdown chamber under the 2 cliffs mentioned above. A downstream passage with a strong outward draught was followed down a climb to a point where it splits in 2. one route leads to a choke which would be difficult if not impossible to dig. Whilst the other route is currently blocked by a stal column. Both these passages draught out. A return at Easter 2009 is planned. Photos taken CC, d&e) Gordon digging entrance. Underground f) Phil G in part of the breakdown chamber, note cow skull. g) John S in downstream passage just before first climb down. Estimated ent altitude is 75m and 15m depth underground. Total length approx 150m. Site 3105 0445559 4801324 ent approx 20m South of WP. Sketch of downstream route by Alf Latham.



SITE 3105  
DOWNSTREAM PASSAGES

BELOW CLIMB DOWN THROUGH ENT  
BREAKDOWN CHAMBER

OCT 2008 A. LATHAM



**Site 3106** JS PG AL 10th Oct 08. on JS GPS 6m acc Site 3106 0445553 4801009 146m alt from GPS. Photo taken by JS looking down hole. Drop 2m down muddy slope onto sandstone boulders that choke the top of the shaft. at that point you can look across through boulders to an opening that requires digging.

**Site 3107** 11th Oct 2008 JS AL PG WP441 6m acc Site 3107 0446883 4801031 148m alt from GPS. Searched for features in recently burnt off area. This is the lefthand most hole at the base of a cliff. 3107 Behind ferns at bottom left of shot. Photo taken by JS. 3108 is just to left of Phil Goodwin and 3109 is above 3108. 2 more holes(3109 and 3110) are off picture to the right.

**Site 3108** 11th Oct 2008 JS AL PG WP441 6m acc Site 3108 0446883 4801031 148m alt from GPS. Searched for features in recently burnt off area. this is the second in from the lefthand most hole at the base of a cliff. 3107 Behind ferns at bottom left of shot. Photo taken by JS. 3108 is just to left of Phil Goodwin and 3109 is above 3108. 2 more holes(3109 and 3110) are off picture to the right.

**Site 3109** 11th Oct 2008 JS AL PG WP441 6m acc Site 3109 0446883 4801031 148m alt from GPS. Searched for features in recently burnt off area. This hole is reached by a short climb up from the base of a cliff. The passage goes only about 2m to reach a blind pot, beyond which a small chamber (unentered) can be seen in the continuing passage. 3107 Behind ferns at bottom left of shot a). PhotoS taken by JS. 3108 is just to left of Phil Goodwin and 3109 is above 3108. 2 more holes(3109 and 3110) are off picture to the right. Photo b) Phil in the cave.

**Site 3110** 11th Oct 2008 JS AL PG WP441 6m acc Site 3110 0446883 4801031 148m alt from GPS. Searched for features in recently burnt off area. 3110 is the third of 4 holes (3107,8,10 and 11) looking from left to right at the base of a small cliff. 3109 is another hole in the same cliff reached by a climb up. Photo taken by JS 3110 is to the left of Phil and 3011 to the right.

**Site 3111** 11th Oct 2008 JS AL PG WP441 6m acc Site 3111 0446883 4801031 148m alt from GPS. Searched for features in recently burnt off area. 3111 is the righthand most of 4 holes (3107,8,10 and 11) at the base of a small cliff. 3109 is another hole in the same cliff reached by a climb up. Photo taken by JS 3110 is to the left of Phil and 3011 to the right.

**Site 3112** 11 Oct 08 WP443 6acc. Site 3112 0447117 4801269 116m alt. Shaft estimated at 10m deep. Could be tight. Located in burnt off area. Photo taken by JS, Phil Goodwin in top of shaft.

**Site 3113** 11th Oct 08. WP 444 5m acc. Site 3113 0446958 4801276 136m alt from GPS. Entrance under small rock face. Draughting in on left side, would dig. Photos taken by CC. Located in recently burnt off area.

**Site 3114** 11th Oct 08 WP 445 acc 6m. Site 3114 0446935 4801258 140m alt from GPS. Small resurgence over sandstone with tufa deposit and small blind undercut below. Photos taken CC. Located in recently burnt off area.

5th Nov

Juan, Pete + I + Ian into Cus Pot. <sup>(2889)</sup> Conservation + restoration trip. 2 stal repaired with threaded pins. Some tape laid out + some working of "off-route" areas done. Also high level noted @ 5 of 10m rift off southern passage. 3 stal pieces brought out.

6th Nov

4pm. Pete, Juan + Pete's bread man set off to Barrio Los Vinos to find Torca del Hombre. Two hours before Lea had met with 2 agricultural types and beaten a route through the 'espina' to the shaft top. We were told this as we met them 100 yards up from the car as we were setting off.

One of the farmers turned round and took the three of us to the entrance. d = 37.6m 30T 0447893 4799530

See map on 3/8/08 Summer log entry.

3115



the langdales

From: Gledhill David (RNL) North Cumbria Acute Hospitals <David.Gledhill@ncumbria-acute.nhs.uk>  
 To: Juan Corrin <uzueka@aol.com>  
 Date: Thu, 6 Nov 2008 14:10

Hi Juan,

Re site 3034 'the langdales'.

Addition to current write-up.

Either drop down 2m upper entrance or squeeze through the lower floor level entrance to emerge in a chamber formed under very large sandstone block. Immediately in front, floor slopes down towards what looks like top of a shaft, but is blocked with sandstone boulders. Short squeeze down shows this to be totally choked with no draught. Right hand wall of chamber is undercut, revealing a low gap that can be squeezed through after excavation of the dry mud/sand floor. Tight squeeze under wall to a larger round low chamber (4m diameter?). There is a hole approx 40cm diameter in the middle of the floor. Late august in the evening of a warm sunny day, this was emitting a good steady cool draught. Hole looks down into top of a rift (5m, possibly more?). Rift narrows at this depth and has a few fallen blocks, but seems to continue down after this point. Rift looks as though it continues round to the left and access from this point would probably be easier. Floor of chamber is covered in dry sand/mud and the area over the rift is more than likely false floor. Walls of chamber covered in old looking dry white calcite.

First entered by me during prospecting on 26/7/08. Described it to Mr. Pringle who went back the following day. Person unknown SRT'd entrance at this point (2m abseil?).

Went back with Barny during flying visit to need another ladder etc. on 30/9/08 but unable to get past top of rift due to lateness of the hour and no kit.

Do with this info whatever you wish.

cheers

Dave

396  
3070

South Vega 0451028 4795483 Alt. <sup>323</sup>~~330~~m Length 92m

The entrance is a rift in the limestone. Scramble down on the right to a passage which turns sharp left. It goes under a daylight shaft to a chamber about 8m in a diameter, with a second daylight shaft coming in on the left. Side-passages on the right and on the far side of the chamber all quickly choke. A step up at the southern end of the chamber leads to a passage, under a third shaft, which ends in a slot down into a well-decorated chamber. At the top of a flowstone slope two passages on the left unite in a small chamber, while in the opposite direction a narrow rift becomes too tight.

This cave is located about 30m away from the grid reference for site 0396, Cueva Graciento, which could not be found at this position in September 2008. It is debatable whether these two sites are in reality the same, as the descriptions are significantly different.

*Explored with ~*  
 Monica Rodríguez Comte

307 <sup>123</sup>

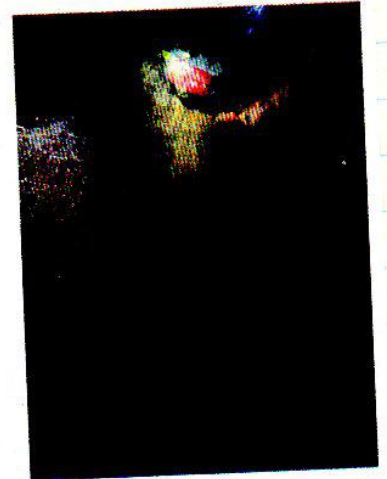
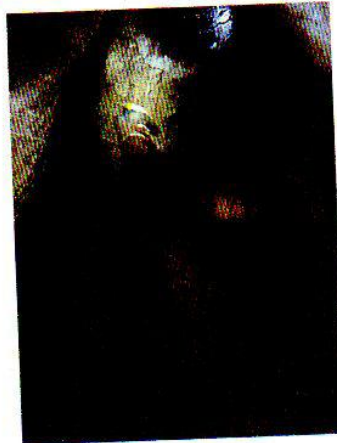
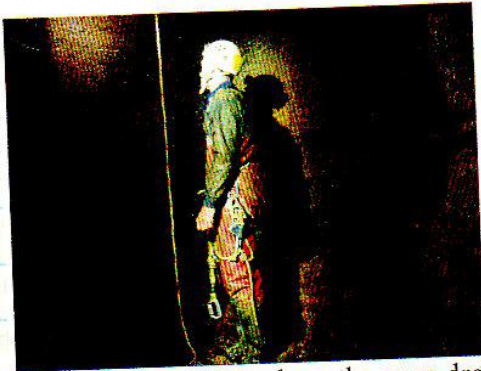
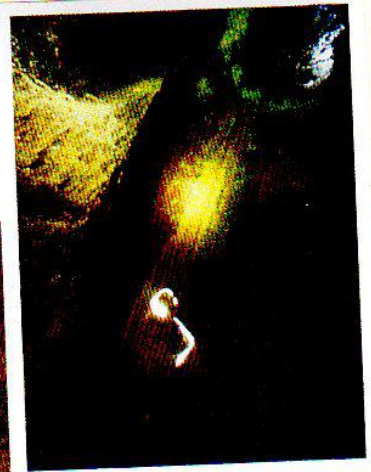
La Secada 0452281,4797998 Alt. 208m

A small hole in the middle of the field which had a slight warm draught in October 2008. The slot gets very tight at a depth of about 3m.



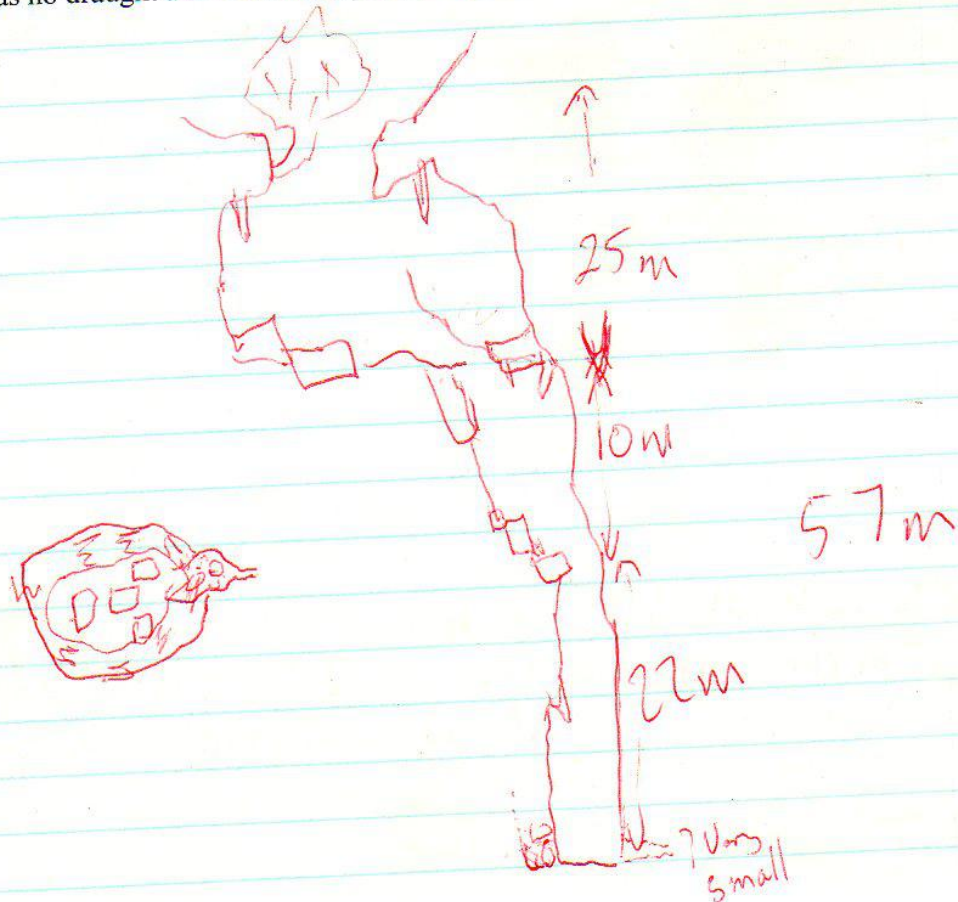
**8 November 2008 – Pedro; Phil P; Juan; Penny and Lea – Torca de Hombre, site 3115.** On fault/joint running 153 deg – depth 57m

After the entrance was found by Lea two weeks ago and Juan/Pedro's visit on Wednesday the plan was to push the torca and survey. Entrance is hard to find but is below a evergreen oak tree that guards to open pot of some 8m across but opens out about 5 m down to a chamber of some 15m across with very old stal. The top beds are in sandstone and it looks as if the cave developed below this bed and the roof collapsed to give the present entrance. Entrance pitch belayed to the Oak tree and one further bolt needed to get to the bottom of the entrance



pitch/chamber. From here the cave drops over two blocks that have "dammed" up the loose rubble to a clean shaft of some 35m to a mud and rock level floor with the small amount of water (from drips) seeping away. No sign of any way on downward. A strong joint/small fault runs through the pot and there is a small passage heading 153deg, may be just possible for a very small person to make some progress along this, but there was no draught and it looked a poor prospect.

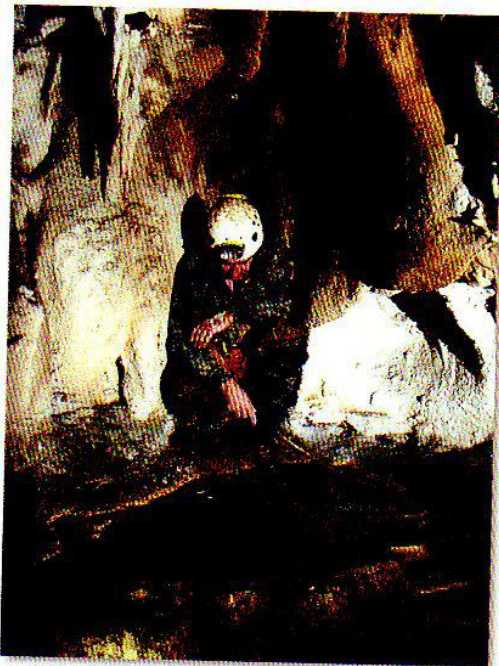
Some video



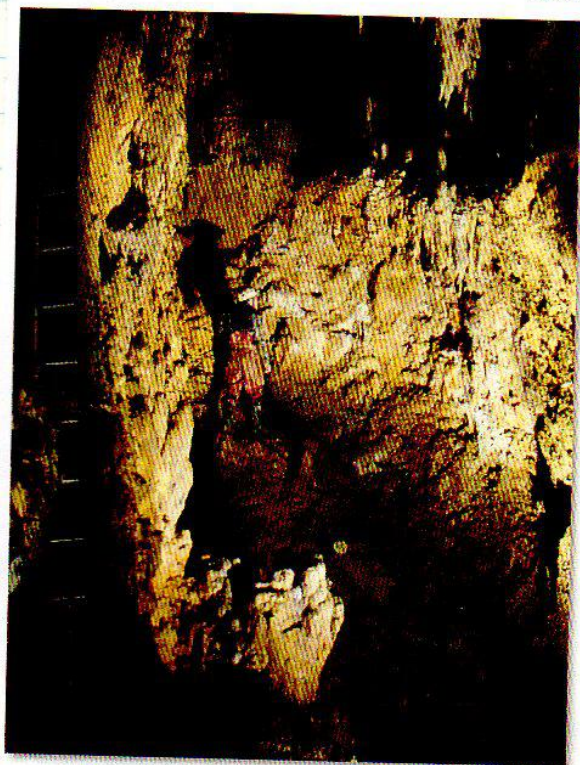


16/11/08 GPS for Orite 0454398 4795109 alt 247  
(corrected)  
Photo 713 in moderate flood.

Monday 17<sup>th</sup> November



1 across top of p5 in Chispas



2 site 397

Pete, Ian and Juan out for the afternoon above and to the east of Cefrales. Aim – to check out the Chispas / Graciento connection and GPS some entrances.

Last night, a small map drawn by Frank Addis in 1982 was found, and this indicated that there were daylight shafts in Graciento – just like Chispas. However, he also wrote that there was an undescended 15ft pitch to the left, something that had not been found when surveying Chispas.

First to Chispas (site 3070). Immediately found the pitch just off the final chamber. Juan descended to find small calcited holes over sediment – a choke. Pete traversed around the side, over the top of the drop and entered another small choked area, with a deposit of small stones which must have dropped down tiny holes from the surface. So site 396 should now be call "Cueva Chispas (Cueva Gracienta)" and this frees up the number 3070 for re-use.

Above and to the southeast of Chispas there is a fenced shaft which was descended by Pete and Juan. It was originally thought to be site 1249 (which is supposed to be next to Gracienta) but it was a 15m pitch with holes in the floor so we decided it was site 397, way out on it's original position (75m to the north). The hole has seen recent collapse around the top, so the pitch was more like 13m, landing on a mud pile, which may have covered one of the holes in the floor. Photos taken.

We then wandered up the hill, spreading out, Pete and Ian up the main valley to investigate a depression and Juan to the east, towards the general area of site 577, Torca Limestone Lump. Found a 6m deep shaft quite a way outside the 100m circle of error for 577, with a couple of fence posts across the top. Disto showed 6m deep and looking down from the top it didn't seem to drop to a "boulder in a rift". However, it was close to a dark grey "limestone lump". But on balance, this site is now 3070 and site 577 has still to be definitively located.

Dropped down the hill to GPS site 37, Cabritilla. Holm oak and strawberry tree in the entrance (among others). GPS here is little different from the surface survey done years ago.

Then back to the Chispas area to try and locate site 1249. Eliminated the shafts above Chispas by Pete shouting up them. There was a quick search for other sites around the cave, but nothing was found. So site 1249 is "lost". On previous grid references, site 1249 is shown a few metres south of Gracienta.

#### GPS values

|          |   |
|----------|---|
| 0397     | 0451101 4795425                                 |
| New 3070 | 0451102 4795292                                 |
| 0037     | 0450950 4795325 (bolt on low side entrance lip) |



As promised, the descriptions of FatBoy GT and Cow Pot.

I have been through the photos I took of Cow Pot that are on the website and there are a few captions that are incorrect. In the section named "Middle level, Gour Passage":

A3 is actually the bit of passage between 7 ways chamber and the chamber leading to the Whitworth Series and Lake Bassenthwaite. ✓

A4, A5 and B3 are taken beyond Lake Bassenthwaite, on survey marked as "cracked mud floor", just south of The White Havens. ✓

B1 is also beyond the lake, not too certain whether it related on the survey, but just beyond some breakdown in coudlers, possibly where it is marked as a "climb down" slightly south of the mud floor. ✓

B2 is also beyond lake, near to the terminal choke. ✓

In section labelled "middle level, 7 ways chamber" A1-A5 are actually from the top level. ✓

#### FATBOY GT

An obvious entrance in a cliff near to the sink leads immediately to a 2m high phreatic tube. The right hand branch goes for about 30m and closes down in a narrow rift which contains an inlet but chokes. The way on becomes too tight, but a faint draught could be felt. A small tube on the right just before the rift can be pushed for 10m. A constriction needs to be removed before continuation.

The left hand branch continues to a breakdown on Orbitolina beds. Just prior to this, on the right, is a phreatic rift/oxbow to the head of a descending tube to the head of a 5m drop onto blocks. The slope leads to a traverse and climb on the right which leads to another parallel shaft with an inlet above. The shafts link up at the bottom, terminating in a small chamber full of boulders in one direction, and a tight squeeze leading to a drop which may continue but will require enlarging.

The continuation of the main passage over the Orbitolina collapse enters a crawl and a squeeze down to a flat-out section and then easier going. A cross rift on the right leads to a sand climb and the head of a 10m pitch which needs descending.

Further on, past another (undescended?) drop on the right, a chamber is entered after much calcite. The chamber is about 10m across and contains large boulders and holes in the floor. At the far side a rift may be followed for about 30m to a choke with an inlet cascading down through a roof collapse and a draught blowing in. There appears to be no way on.

Before the chamber, a low level route zig-zags down through bouldery tubes and rifts and ends with a climb into a blind pit with an inlet. This may be glimpsed from the chamber above.

A climb above the final drop into the blind pit enters a rift which arrives at a small, sandy chamber. Down through a low sandy slope enters a small rift which continues for some 60m to a fault. The left hand route continues a short distance to a choke, over drops which are too tight. The right hand route immediately gains an awkward, tight climb into a phreatic chamber. A 10m drop can be seen through possibly diggable boulders which lands in a possible chamber. The draught is being sucked down into it.

In the summer 2006, the choke at the end was visited and it was thought that heavier equipment is required. Also 40m of new passage was dug into / discovered. A short crawl from a sandy passage leading from the chamber pops out in what appears to be the old streamway passage. About 40 metres on, the passage meets a rift, with many loose boulders above and below. A 6 metre pitch was descended and a sandy chamber was found.

A body sized tube with a steep descending stope was explored and further holes in the floor were found: MIKES BIT TO GO HERE

Back in the rift, letterbox squeeze on the left led to a parallel rift which was too tight to continue. There are various holes in the floor which are very promising leads. The rift becomes too tight to follow.

At Easter 2008, some re-exploration occurred but it was too wet for drilling the choke. Ticks were reported in the cave and bats in the roof. In the summer 2008 the cave was completely re-explored, extended and surveyed.

#### Whitworth Challenge

A drop down back under the entrance rift of the Whitworth Series leads to to a hands and knees crawl with many side passages choked with boulders. The crawl terminates in a notorious squeeze named the Whitworth Challenge, which pops out in a small chamber at the bottom of a twin aven, which has not yet been pushed to conclusion. There is possibility of a draught coming from above. Water can be seen sinking to the floor heading southbound. Prior to the squeeze, there is a sandy crawl heading northbound which has not been fully explored. The retreat is very tiring on return if a turning place is not reached! ✓

#### Mancunian Candidate

A passage covered in a cracked mud floor heading south out of Tuna Can Corner leads to the Mancunian Candidate. A passage on the right connects to a parallel rift and terminates in an aven (unsurveyed). Many of the side passages are also yet to be fully explored to conclusion. A cairn is soon reached and a climb down on walls made of chert leads to a streamway. ✓

MANDY FU







## **MATIENZO CAVES PROJECT**