

LOGBOOK

Year: 2007

Season: autumn

Logbook pages scanned to jpg then combined into a pdf file using <http://smallpdf.com/>

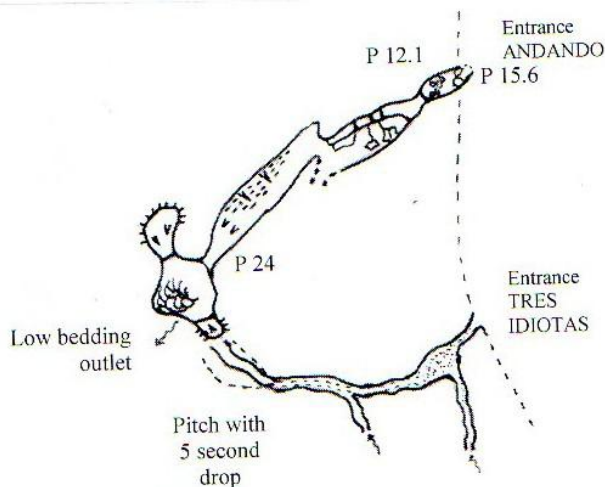
Juan Corrin, January 2015

Autumn

2007

All accounts by
Lugger

①

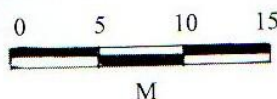


Site 689: Torca Andando

Llueva / Secadura Map Ref. 0454358/
4799272. Alt. 411m.

Site? Cueva de las Tres Idiotas

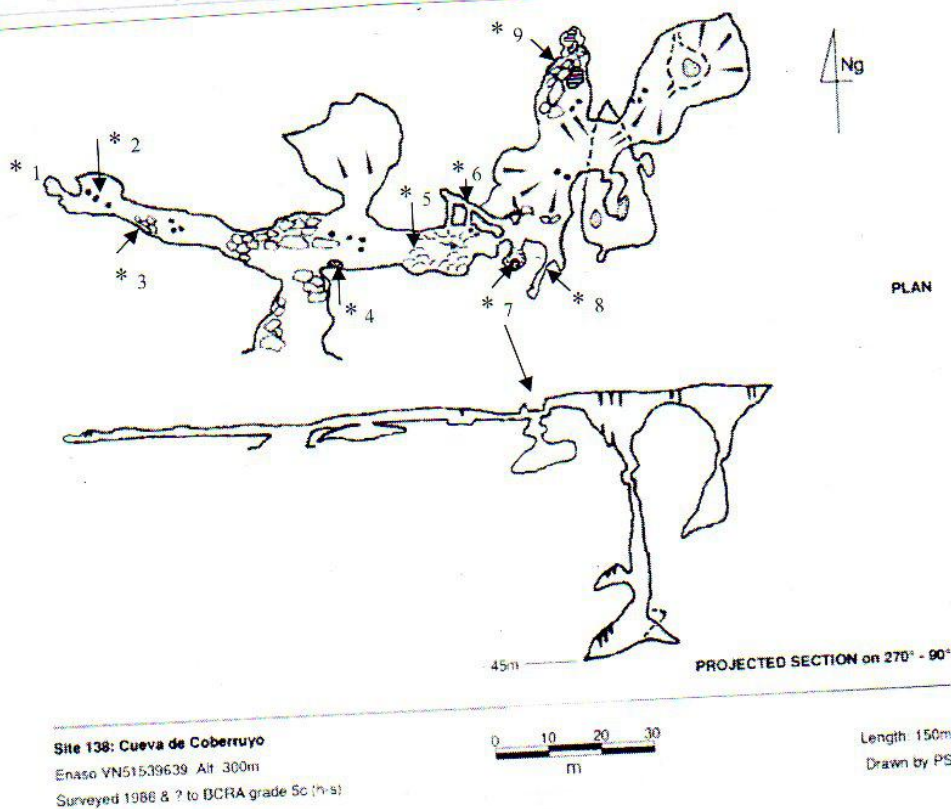
Map Ref. 0454356 4799257. Alt 413m.



Cueva de las Tres Idiotas.

Cave is situated 2 metres up bank at side of track 15 metres beyond Torca Andando. Excavated entrance crawl pops out into a small chamber with sediment floor after 2 metres, tight inlet on left brings in a trickle of water, main way on is a jagged rift 1 to 2 metres high with a phreatic roof tube, a second small inlet enters on left at floor level this chokes in calcite after 3 metres. Immediately beyond inlet a flowstone boss forces one to crawl over moon milk to keyhole shaped passage and a narrow rift dropping away into blackness. A traverse above the rift on sediment covered ledges widens dramatically before a large wedged boulder can be reached. Rocks dropped down the pitch have been timed at over five seconds hitting one ledge. The pitch probably connects with Andando though the rift appears to bell out to the west and could possibly fall beyond Andandos final chamber. Disto readings were taken though the only measurements I could get was following the north west wall down when I got readings from 11 metres down to 27 metres below this was a black hole and the disto beam got diffused. A strong draught blows into the cave and on reaching the pitch it is immediately sucked down and no draught can be felt on the traverse. Smoke tests were carried out at the entrance to Andando first by Lugger's pipe and then by Phil's Olive Branch and no hint of a draught could be detected. Tackle is still in-situ on Andando's second pitch. Surveyed length for Tres Idiotas is 20 metres and pitch head is less than 2 metres below entrance. Pitch head needs gardening of sediment and bolts installing for safety line on traverse. Traverse is an adrenaline rush when things start dropping away below you.

If one follows track south for about half a kilometre a junction is reached, right branch ascends slightly to a farm building, follow track past farm building for approximately 200 metres and a sleeper covered shaft can be found on right hand side of track.



Cueva de Coberruyo.

This cave could do with a complete re-survey as the passage detail is very confusing especially the entrance and eastern chambers. Entry to the eastern chambers is by a short crawl or narrow rift on north side of main passage see No.6 below. Interesting features digs or short extensions are also listed. Eight bats were noted in the cave two of which were extremely large possibly *Nyctalus Lasiopterus* the others appeared to be Greater Horseshoe. The two larger bats were in the east passage and four bats were noted at the end of the west passage exiting the final small chamber. As to be expected in a cave noted for its archaeological material, bones and charcoal were noted in most areas of the cave. A few bones were also noted in the east chambers though charcoal was not detected.

Sites of interest.

No.1. Small bell chamber at the end of west passage was inspected from which a number of bats were seen to exit, the only way on from this chamber was much too tight, very little in the way of bat droppings were noted in the chamber so it is feasible the bats were roosting further in the cave.

No.2. Area with a profusion of glazed potsherds cemented into calcite floor at base of large stalagmite.

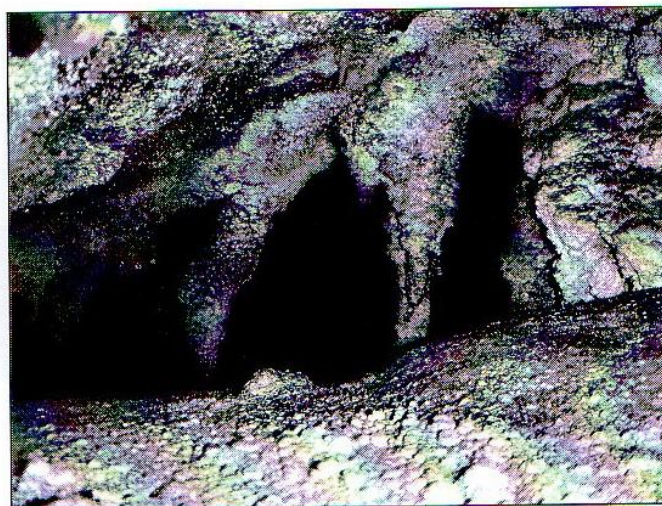
No.3. Passage leads off from this area would need some rocks pulling out to gain entry, probably goes to surface, though it could be worth checking out as a possible by-pass for the end choke.

No.4. A short dig at base of two wedged blocks on south side of passage dropped into a small chamber and slope down to a narrow descending tube 3 metres deep, over top of tube a narrow rift dropped down to a continuation of the tube, a short time was spent excavating in this area but was abandoned due to time and a lack of digging

implements. Large bones were noticed at the base of the rift cow sized possibly Aurochs and certainly very old.

No.5. In crawling section on north side of main passage there is a rift in the roof where one can stand up, on one side of the rift is a shelf where a copious amount of charcoal can be found, on the other side is a similar shelf at the back of which are a number of bones of a medium sized animal, the position of the bones suggests they have been deliberately placed their.

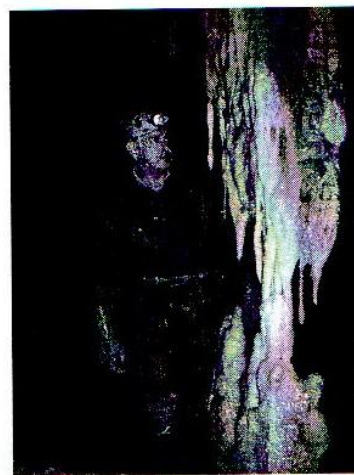
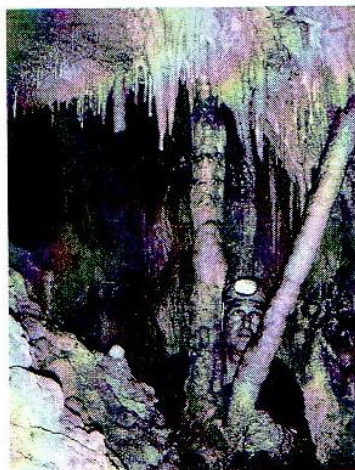
No.6. It is not clear on the survey the route through to the east chambers. Hole through in centre of main passage is blocked by formations (picture). Two routes on north side of passage unite one is a short crawl the other is a narrow rift.

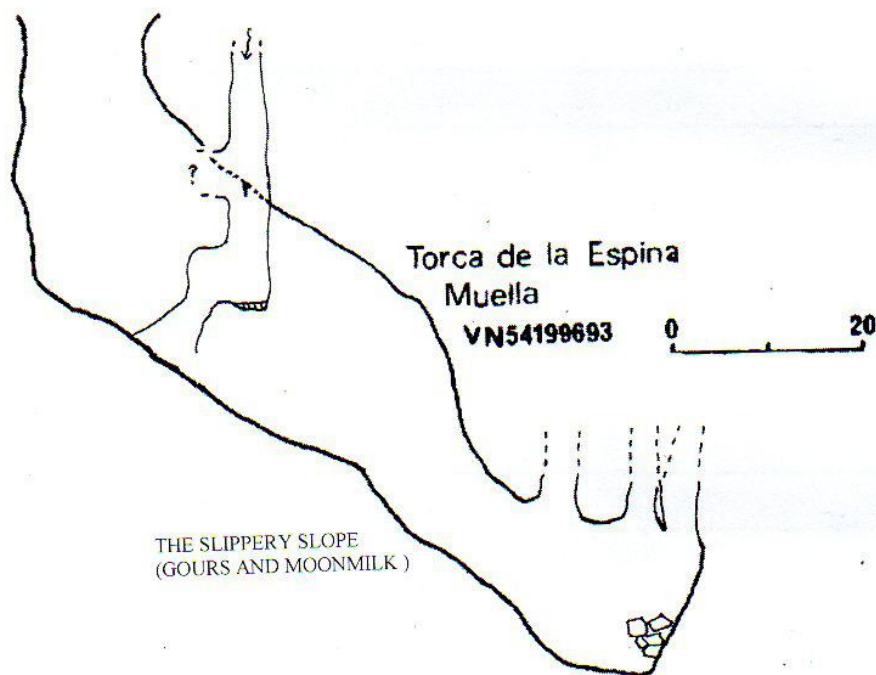
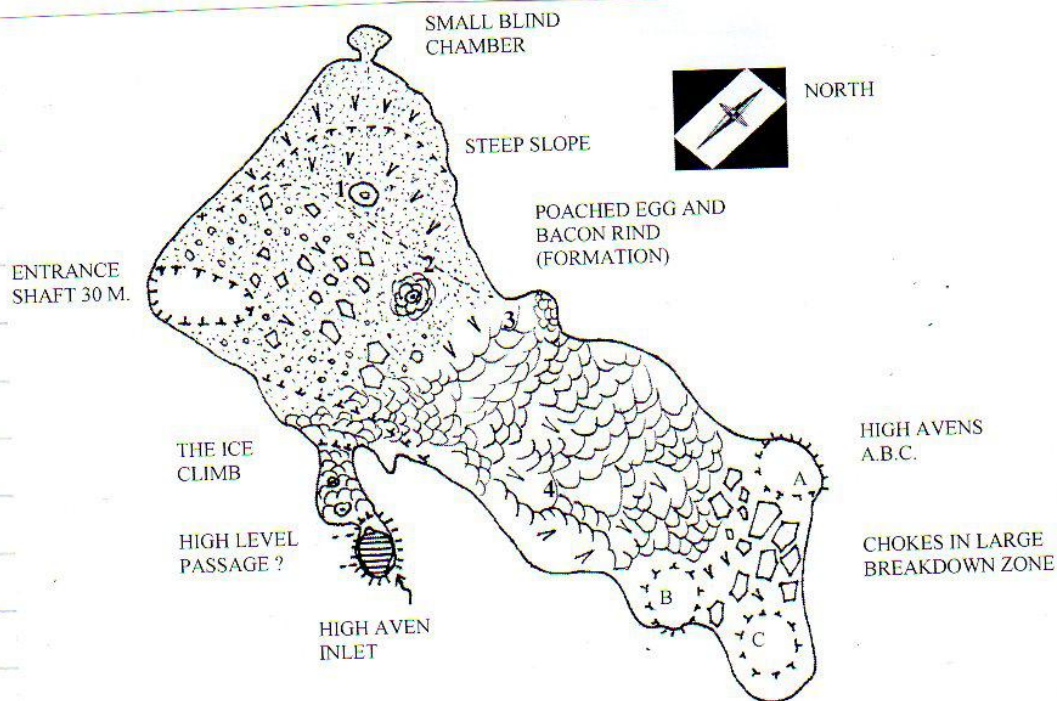


No.7. On exiting the crawl through to the east chambers and following right hand wall for a few metres a circular chamber with depression in the floor can be entered. A 3 metre climb down at the base of the chamber reaches a hole in calcite this was enlarged to drop into a decorated chamber 12 metres long and 6 metres wide and deep.

No.8. Passages missed of survey one guarded by nice stalls (picture).

No.9. Holes drop away in calcite choke might be worth a small excavation with the right tools, the main continuation of this passage ends in a small chamber with a deep pool, flowstone everywhere; a picture of Phil at side of column is from near end of this passage.

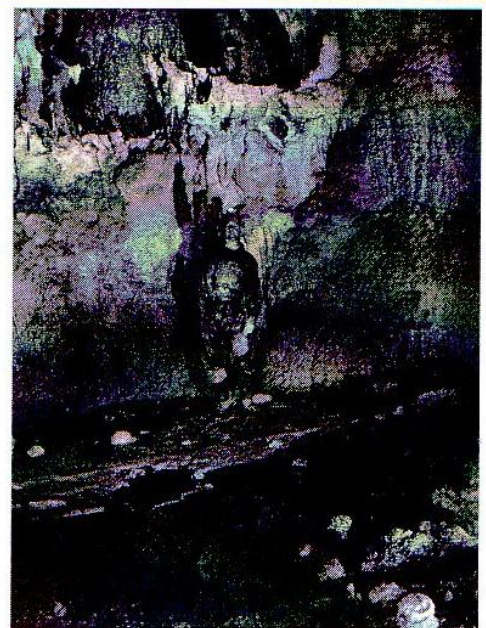
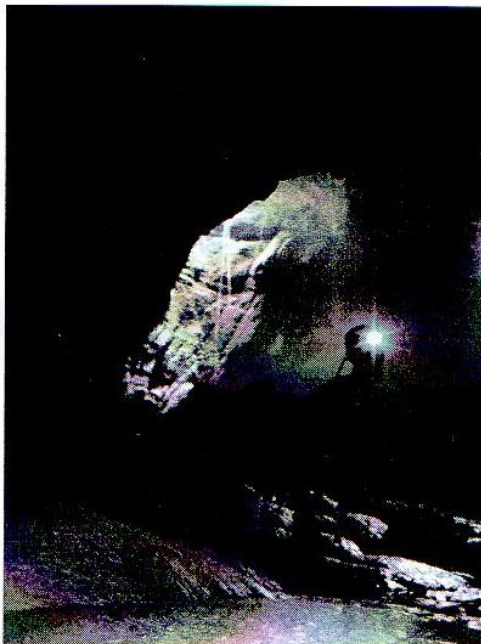
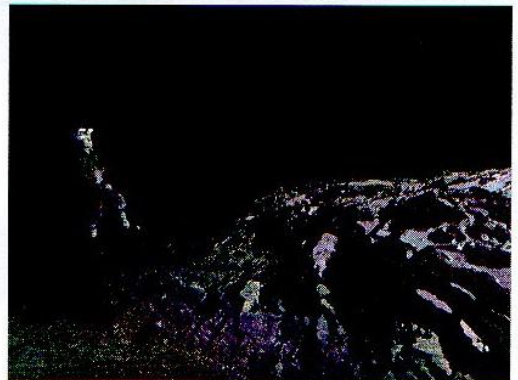
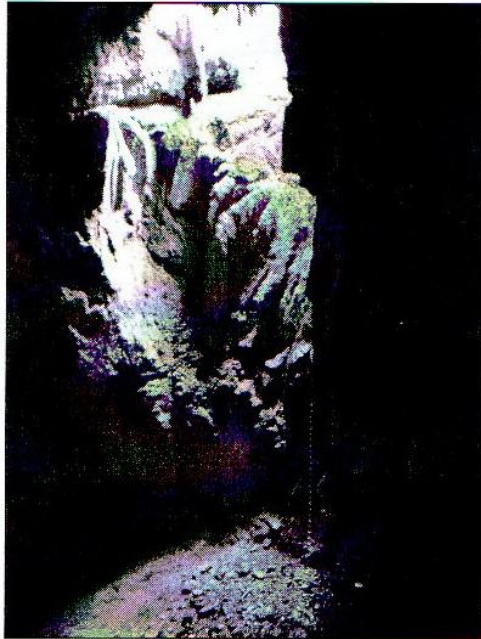


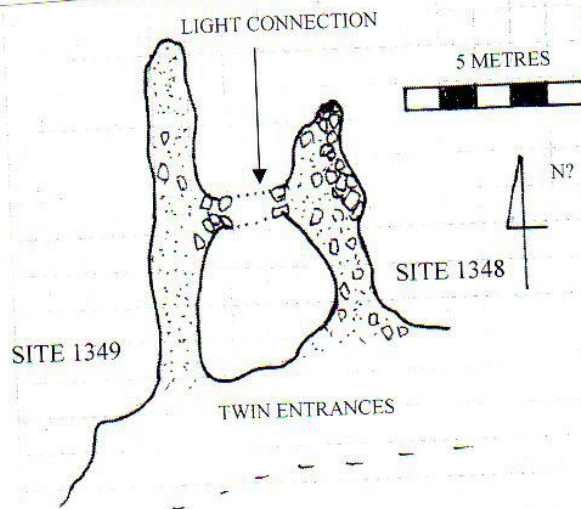


The cave consists of a 30 metre entrance drop the last 10 metres are clear of wall, this lands at top of steep slope of rocks and silt in a very large passage. On north side is the amphitheatre a steep slope up to a small blind chamber. A little lower down on south side is a desperate climb of 10 metres up moon milk and gours this breaks out at the base of a high shower bath aven with large window 15 metres up (passage or alcove?). Passing the shower bath inlet the passage descends over slippery calcite flows and gours at about 40 degrees. The roof lowers to about 12 metres before rising

again at a series of high avens before the passage finally chokes in large breakdown blocks. The choke has many nooks and crannies and a way on could exist (Steve Martin noticed a possible lead which might have been overlooked) needs a thorough check and proper survey. The plan above is from memory with a few disto readings thrown in.

The numbers on the plan indicate the position where photos shown below were taken from.





These two caves are connected though the route through needs excavating. They are situated on ledge at base of outcrop about 80 metres east of Coberruyo. Both are hands and knees crawls and 1348 is probably the most interesting from a digging point of view. The draught is confusing as on the first trip when I went in site 1349 this was draughting out very strongly from the connection passage though not at the end and site 1348 also appeared to be draughting out. When I went back with Phil a couple of days later site 1349 was draughting in through the connection and out of 1348 and no draught could be detected at the end of 1348, also the draught was much reduced. The weather on both days was fine with no surface wind. Pic. 031 on disc is entrance to site 1348. Survey above is a memory sketch but should be quite accurate.

There is a rock shelter 50 metres east of above two caves with a level platform and signs of old walling this is about 4 metres long. Pics 029 and 030 are of this feature.

On climb up to site 1348 from path is a small rock outcrop which undercuts and could conceal a cave entrance the undercut is guarded by brambles and would need a machete.

2803

Accounts from here by Juan

Sunday 28th October 2007

Juan and Penny walking on the south side of El Naso, with the intention of positioning the caves beyond Cueva Asiul, i.e. 355, Perlas and 354. Normal parking spaces at top of hill full of climbers' vehicles so parked in the next spot along.

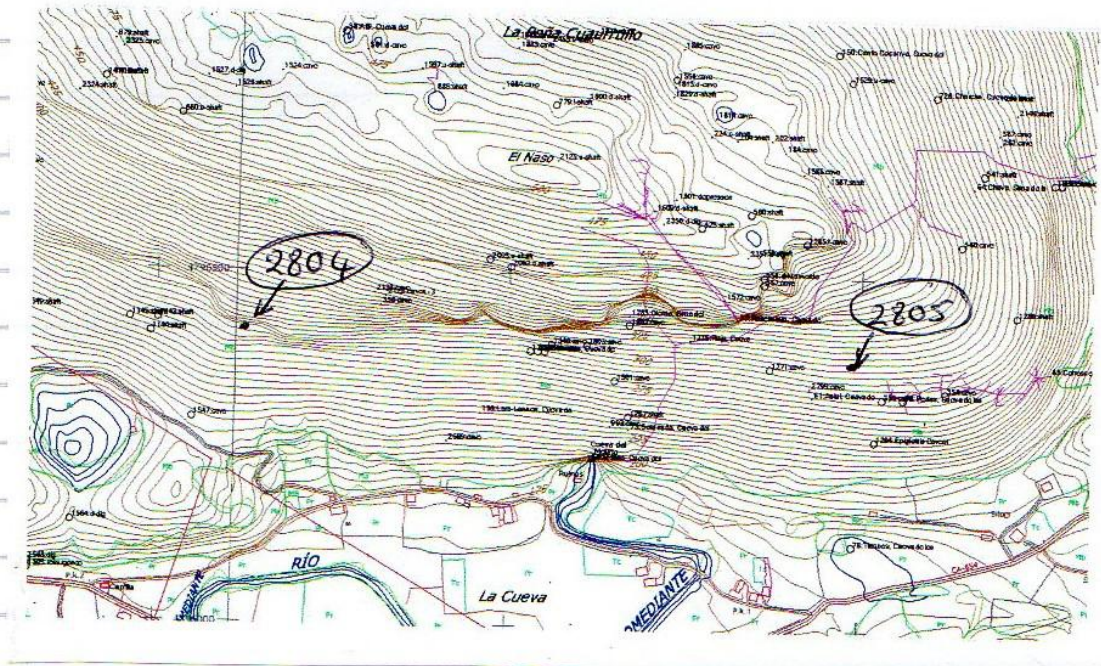
Walked up the road and then up the hill - this was a mistake as we came across a new **site 2804** against the cliff face at 30T 0451129 4796422. This is east of a farmer's fenced pen attached to the limestone face. A 1m step up and then down enters a small chamber with string on the floor. Old bones and possibly medieval pottery are found around the edge, and it may be a good site to dig. Rather similar to *Sima del Diente* though on a smaller scale.

Then carried on down the hill towards Asiul, past the climbers before, over and beyond Coberruyo and Rascavieja. The cliff above and to the west of *Sima del Diente* appeared to be favourite spots.

Went into Asiul - nice formations, helictites, coloured flowstone, etc - well worth a couple of hours photography. Looked at "wet crawl" in entrance. Just a pool.

Had a quick look to the east for any sign of the caves around Perlas - didn't find them. The original position of Asiul was 40m lower in altitude than the GPS position. The positions of Perlas etc are now on a level with Asiul - perhaps they will be found 40m higher than currently shown on the map.

However we did find a new shaft above Asiul that needs opening up at the top - this is **site 2805** at 30T 0451982 4796372 - about 4 to 5m deep with a wet, red floor.



Friday 2nd November 2007

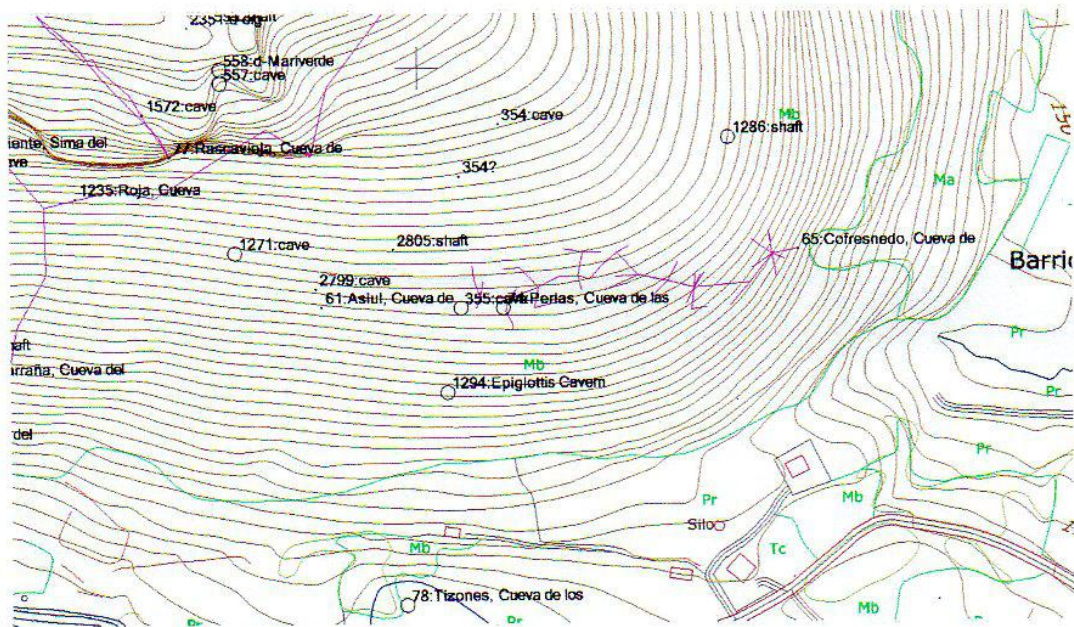
Juan and Ian on El Naso with the intention of photographing in **Asiul (site 61)** and GPSing the entrances to **Cueva Perlas (74), 354 and 355**. Parked at the end of the road to a couple of houses just before Tizones. Walked to barn below site 1294 (Epiglottis cavern) and then climbed up the hill to Asiul, failing to find **1294** on the way.

Spent a good couple of hours in Asiul. Small bat seen at end and some charred bones down in a low section on the right at the end. These bones have tiny crystals growing on them and one at least appears to have marks across the bone. Near the entrance there are also two black marks on the wall, above head height on the left. The entrance slope has goat remains and a deer skull.

Then climbed up hill to try and find the three caves. Eventually found **site 354** at 30T 0452057 4796460 which Juan confirmed by exploring down the calcite slopes to the top of probably the final climb down. (Boot marks seen in the cave).

Despite a good sweep search, sites 74 and 355, supposedly to the west and slightly lower down the hill, couldn't be found.

An old GPS reading for some hole in the area (30T 0452029 4796423) may well be one of the two "lost" holes. (354')



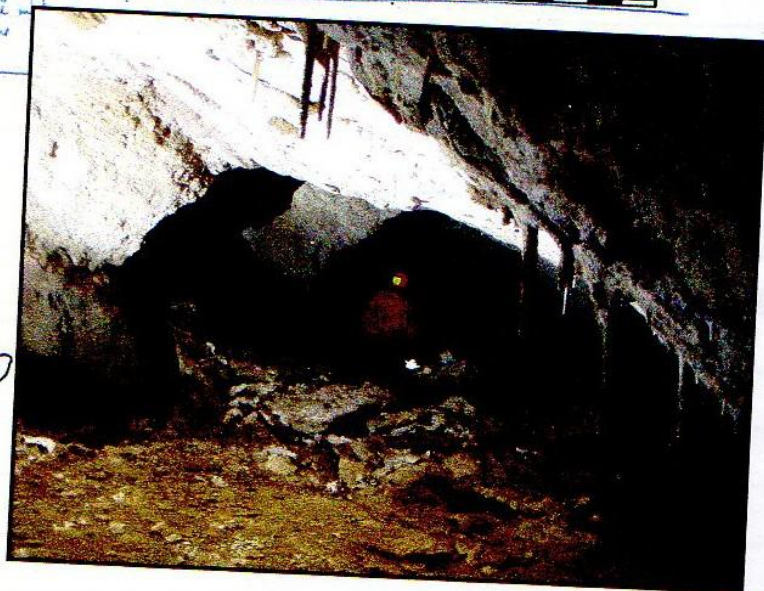
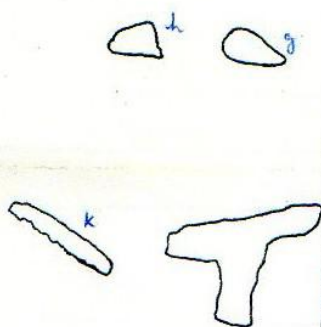
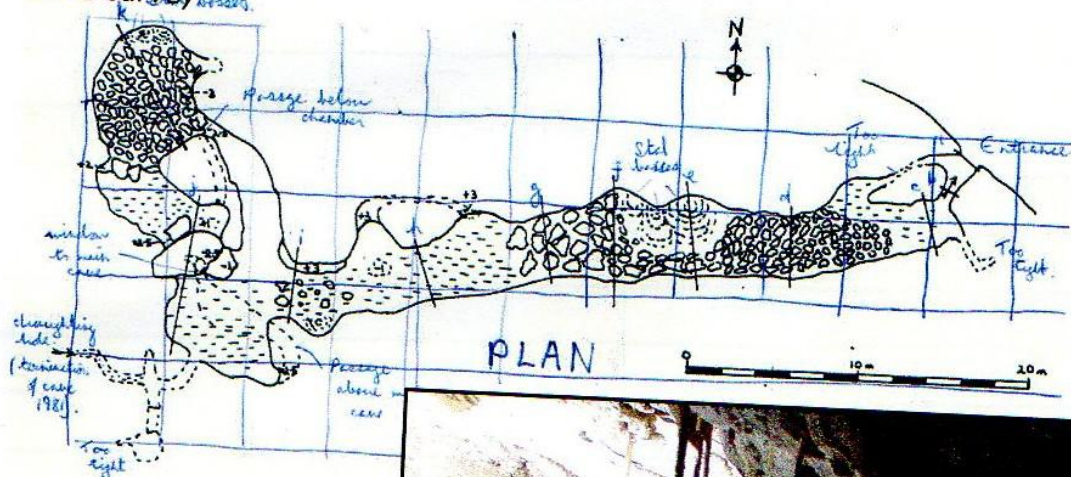
Tuesday 6th November 2007

Martin Barnicott and Juan into **Cueva del Zorro site 345** to get a line survey in addition to the 1981 detailed survey. Used disto and a digital clino with a conventional compass. Unfortunately, there seems to be errors with three of the compass readings! These have been "corrected" but, should the cave be extended, the whole site should be resurveyed. All the passages noted on the '81 survey were entered and it was generally agreed that the Bolton had done a good job.

The cave should be checked out again on a hot day: the small draughting passage noted at the western extremity could be capped / lump-hammered to enter a lower continuation, but this doesn't give the impression of the way on.

At the top of the boulder run-in at the end a large block appears to have dropped and is blocking the way on. All ways over and around seem well choked and calcited up. The smaller calcited choss layer in the roof could be only a couple of rocks thick and it may well be worthwhile using snappers to blow a way up. The size of the passage leading up to the choke certainly suggests that it is not going to end. Took some photos.

1981 survey



Friday 9th November 2007

Juan, Phil and Steve into **Cueva del Zorro (345)** to snapper the choke. Quite successful in very hard rock. Can possibly stand up in a small chamber on the right under a roof of unstable choss. A longer bar is required.

Some of the survey leg compass readings were retaken.

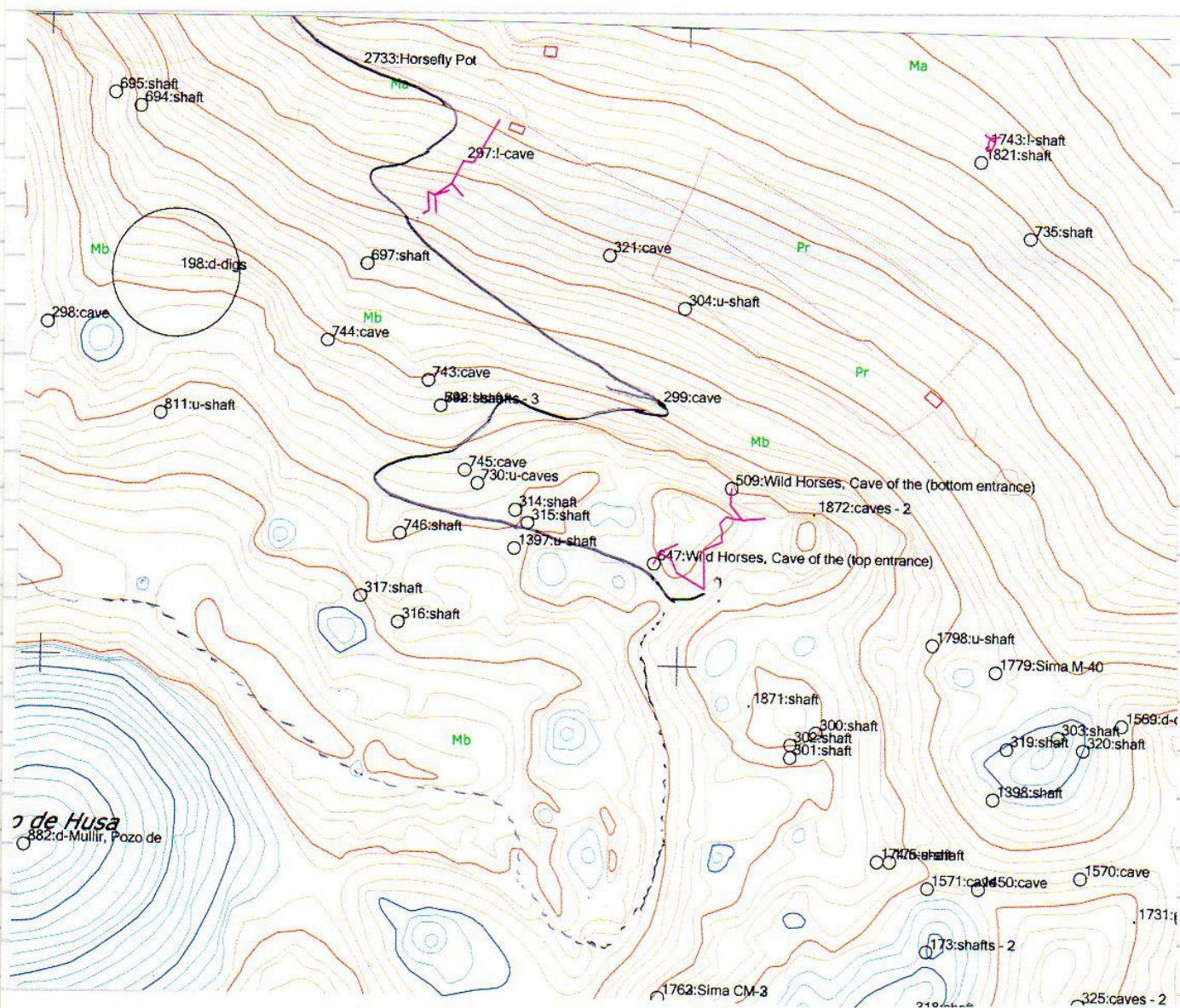
Needs a draughting day to check out the current ends. But it may be that site 309 may be associated with Zorro as the cave gains altitude towards the end.

Saturday 10th November

Steve and Phil to **site 2786** and enlarged the entrance so that people larger than Luggar could enter. It would appear that 2786 links with **Torca Andando (689)** as stones thrown down the 5 second drop can be heard in Andando. The draught may come from a passage over the top of the pitch.

Then...

Phil, Steve, Sue, Juan, Penny and Terry up onto Muela then around the side of the Hoyo de Yusa, across the top of the edge to reach the valley full of depressions then around to meet the track nearly where it currently finishes, just east of the top entrance to Cave of the Wild Horses (647). The shakehole at **site 746** has been filled in but the hole itself might still exist on the side. It may also be that **site 299** has been obliterated - the track appears to pass over the top of the map position.



PP: - photos of 1145 (probably)

(11)

Sunday 11th November

Phil, Steve, Juan and Penny parked beyond the climbers' car park on the Cubija track and staggered (fiesta at the Baker's last night) off across the hillside towards Rascavieja with the intention of locating and photographing Las Perlas.

Refound **site 1271** (which we thought was an undocumented hole) at 30T 0451928 4796436 alt 350m. This is 45m higher up the hill than shown on the new digital map.

Looked for **Perlas site 74** at the suggested grid reference mentioned on Friday, 2nd November. Didn't find it. And didn't find any caves in the area where we assume they must be, to the west of 354, located last week. It's now up to Pete Smith to find 74 and 355!!

Spent an hour in **Asiul, site 61**. Bat and a Herald moth noted. More bones and charcoal seen.

[Photos from Pete = Museum Reyes
15/4/07 articles 9/8]

Harry's phone call: 16/11/07

✓ site 2764 ↔ 2765 swap ent. photos.

✓ 2433 resend picture file to Andy

✓ 2386 Paul pi @ 2386 is really 2387.

0035 → ? Andy ← 0061 Read everything with fresh dates

✓ 0115 Redate 2 HL ent. photos + resend.

✓ 2417 " " " " " " " "

Sent 2388 photos ✓

Easter
2008.

15th March

26th March

HL + CC + JS
+ Pete Morgan

SKIP 4 PAGES

TO CONTINUATION from

Chris Camm

Subj: **Perlas**
Date: 04/12/2007 13:52:30 GMT Standard Time
From: smith_peter2004@yahoo.es
To: uzueka@aol.com

Hi Juan:

We got back last night after a great week in the valley. We had a good balance of house jobs and caves. Only there wasn't time to look at site 2804 or Asiul, and we were two numbers away from winning the basket of goodies at Pablo's!

But we did find Perlas - practically went straight to it. The coordinates put it higher up the hill than it was marked.

They are:

Perlas 0452051 4796425
355 0452019 4796415

We're sending you some photos as an appetiser for you, because Ron's slave unit wasn't working that day so all these were taken just with the camera's flash. So the challenge for you is to go and take some really good photos yourself at New Year!

As usual I'll send them in several messages.

Cheers

Pete

Subj: **Re: Matienzo Fuente de la Pila**
Date: 04/12/2007 22:27:54 GMT Standard Time
From: smith_peter2004@yahoo.es
To: Uzueka@aol.com

Hello again,

Some other highlights of the week were helping Ian with his filming in Coventosa (Fantasmas). That was a painless exercise as Ian is not the fussy kind of director who likes everything to be perfect and does endless takes. One take is enough and Antony can do the rest!

One morning was spent trying to fix his roof (the front part) as the skylight was directing the rain water under the tiles. The boards under the roof in his studio were black with the damp.

Saturday, when it rained, we were with Chuchi and Emilio. We ended up at Cueva de Fuente de la Pila (486) where they quickly found a number of flints just inside the entrance. That photo is out of focus unfortunately. The others are of flowstone down the wall about 60m from the entrance, the entrance (obviously), and the passage below the 4m maypole climb up the clay wall. However, the main aim of the day had been to look for another of the Cuencans' caves, where the Cuencans say they've found a red painting, but we couldn't find the entrance, even though we've been to it in the past.

I can do an expanded description of Perlas if you like.

I think you forgot to attach the jpg of the map before.

I like your new map section on the web site, I think it will prove popular.

Subj: **New Riano Surver File**
Date: 21/12/2007 14:52:05 GMT Standard Time
From: drfootleg@googlemail.com
To: Uzueka@aol.com

Hi Juan,

Here is the Riano survey data file with the new 89centsTinto extension included. The new surveyed length is:

Total length of survey legs = 248.30m

Now I have corrected on of the vertical legs to be a climb up rather than a drop down, the end of the passage is within 3m of the surface overlay, and at a point where a few horizontal metres extension would intersect the slope of the hillside without needing to gain any more elevation.

Footleg

24 Dec 2007

Hilary, Jonathan ,PP

SITE 2785 Pp1 494m 0451233,4796776

Dig - into top of narrow rift some 5m deep -no draught in temp of 13deg.

27 Dec hole

SITE 2807 Pp2 2m deep not looked at fully - grid ref 0455699E 4795216N

Pp3 Small hole dig no draught 1m deep location 455355E 479552N (Not documented yet)

PP

6 Figs only

31st December 2007

PP, SteveM, Penny, Jonathan & Juan walked to Perlas from the second off-shoot track on the Bosmartín road at about 350m altitude. The track here is being widened.

Found new hole, **site 2806** on walk about 100m W of Canto Cocurro (150) at 30T 0451865 4796839 alt. 388m. This is an open 2m deep small hole with rattling possibilities down to the right. (Unexplored).

Found entrances to **Perlas (74)** no problem due to Pete and Carmen's GPS earlier in the month. Phil went in the eastern entrance (flat out crawl) and the rest of us went down through the 2m drop. Photos taken - Steve with new camera. Various small bits of pottery found on the small slope beneath the 2m drop. (One piece - 10mm x 10mm is black and red and has marks on the black side).

Phil had a quick look into **site 355**.

Dropped down the hill to previously parked vehicle trying to locate **Epiglotis (site 1294)** again. Didn't find it.

JSC

Matienzo

6th December – 11th December 2007

Team Members Neil Phillips, Chris (Lady Hips) Agnew, Carl (sharky) Clarke, and Tony (badger) Radmall

Main objective to start to explore question marks in the upper series in Riano.

Day 1, due to a late start the days aim was 1, to find our way to the upper series and identify our area of search and equipment needed to progress. After a few wrong turnings and with help from the written survey we found our way into the upper series, we proceeded along to just beyond the Acid Bath where we started to check out the question marks on the survey, Chris looked at the possibility of the high level passage, but with out any equipment it would have been a very risky exposed free climb. We started to make our way back checking passages as we went, eventually coming to passage which from a vantage point overlooked a drop into a chamber, Carl free climbed down into this chamber with chris to have a quick look, this we decided would be our area to push first. Back at the initial climb down we observed what could be a whole in the roof approx 30 metres above, the initial climb would be over some very loose rock/mud, before some easier climbing, however the middle bit of the climb looks to be very exposed and would need some form of protection to overcome a slight over hang

Day 2, we **identified passage on survey ending 162alt.** to be our main area to search, having free climbed down into a small chamber day before, we set up a hand line although only approx 2 metres quite awkward and loose take off into chamber (**89 cents tinta chamber**), Neil explored a climb to the left of the chamber, which eventually brought him to a window looking in over an aven, Chris using a hand line went down into the aven to see if passages continued, which they did not, whilst badger and Carl looked up 2 sandy climbs on the right. The right hand climb went up approx 4 metres around the corner to a dead end, **the left hand climb lead to a traverse across what we assume to be a mud choked rift to the aven below, with the passage clearly going in front.. Due to the slippery nature and hand holds tending to end up in your hand and not attached to the wall, we sent Chris across who rigged a traverse line, the traverse was followed immediately to another traverse which was not quite as exposed, here Neil went left into (Eric's express way) a passage that curved left to right to meet up above the bridge of kazak doom, whilst the three of us went up a small climb into a chamber,** in the roof where 3 ascending rifts, where Badger became Footholds for Chris to start climbing one of them, Chris climbed up approx 15 metres to some boulders which need to shifted as the upward rift keeps going, however not being able to secure himself to something solid was reluctant to try and shift the boulders and descended. **Carl had continued out the back of the chamber and had met up with Neil, a climb down to the floor and over a rock bridge, (bridge of Kazak doom), followed what was and old stream passage, (coral passage), to a zig zag and through a lot of broken calcite to another aven chamber, both down and up,(prayer chamber), to the right and over a boulder to a crawling passage, at the end the passage mud choked can see to be going under, a climb up and a traverse along the roof takes you to a chamber**

with both up and down being choked. The air quality in this roof part was noticeably different to the passage behind and was felt to be fresh air, there was also found spider web and a spider threads, back to the beginning of the climb into the roof traverse there is a climb (unclimbed) up some very sharp clean washed stone through a small hole into darkness. Through this whole series there is passages going of we did not have time to survey any of them but looked into most, most going not to far before becoming choked with mud and rock..

Day 3, having had very heavy rain over night it was with some trepidation we went back to survey the found passage from the previous day, the Riano entrance had a very nice deep puddle which was particularly nice passing through, although seeing how the water was laying and the passage of the water as we passed through , lead us to believe that the entrance would not sump, obviously some of the more seasoned Matienzo cavers may know otherwise. Also the chamber where the way on is into the upper series, After the turning for Cat Paw Print Passage, there was a stream flowing right to left through the middle which by its colour and smell was carrying farm slurry. On the way out we observed this in further places where the stream cross's chambers but not noticed on the way in. The result being we proceeded to our passage to survey, whilst 3 surveyed the fourth and mostly Chris started to bolt the prayer aven, we are about 10 metres up with the seen passage going around the corner, the roof here is also very high, the previous day this aven was completely dry but clean washed, today it was quite wet with the over night rain permeating its way underground,

Day 4, with 3 fairly strenuous days beneath us and with even more over night rain we unanimously voted not to return to Riano, also with the report from the summer with lluvao and the river cutting of the main passage, we decided to opt for the only other cave that Badger new and was not to strenuous 'Los Hoyes, although with the amount of rain coming down no one was to keen to get out of the car to change, but eventually we did and had a nice trip down to see yogi and his mates.

⑤

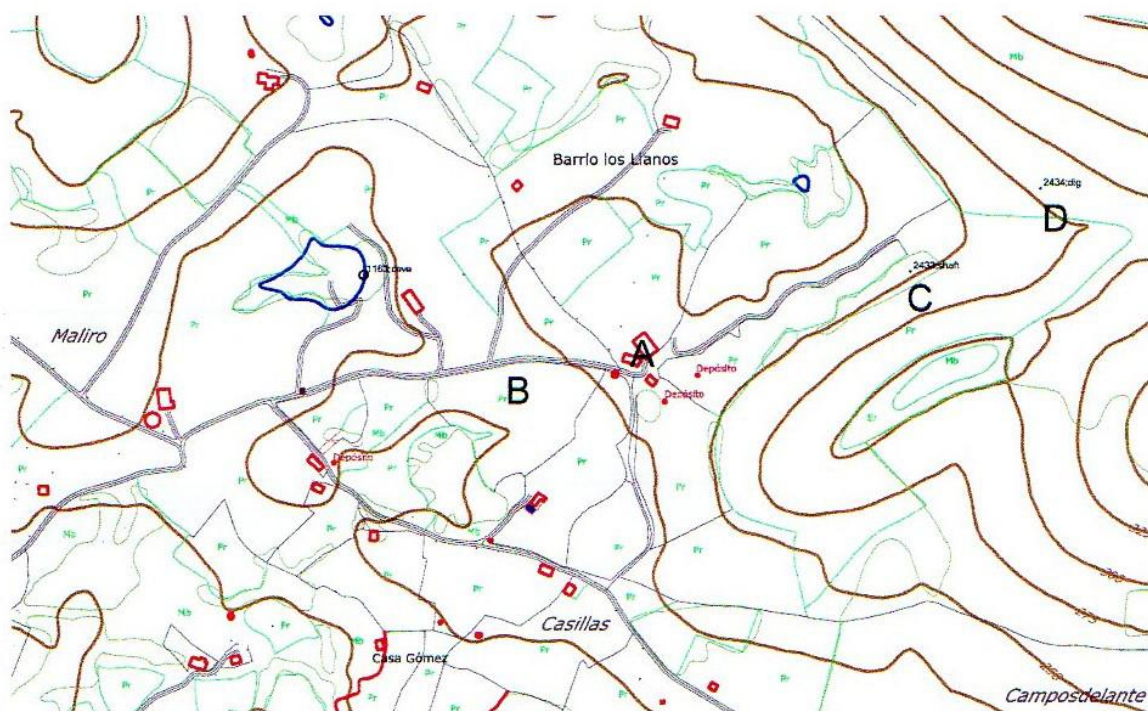
OCTOBER 2007

17

Thursday 18th October 2007.

John Southworth, Steve (Tiny) Calvert, Chris Camm.

Visited the large rising, Fuente Aguanaz, then on to Barrio los Llanos in the Camposdelante area. Parked at farm marked A below, the farmer here told Steve that a hole had been uncovered whilst digging out foundations further down the road on the left (South Side). A search of the area marked B, found no sign of the hole. A large concrete base has been laid which may have covered it up. The farmer did say it was still open though. It may be worth trying to get the farmer to point the entrance out.



Site 2433 marked C above was visited.

The western end of the rift was found to be draughting out quite strongly. After some boulders were pulled out one large slab blocked the way in. An attack on this with hammer and chisel got John past the obstruction. Note the LHS of the entrance looking in is large, dangerously loose boulders.

A very loose 5m deep pitch leads to a rift passage. Back under the entrance rift is choked whilst to the west a 0.5 to 1m wide rift can be followed for 32m to a choke. The rift is 3 to 5m high with a mud floor. We are not sure what the water flow direction in here was. The 32m passage runs mainly on 270 degrees whereas the entrance rift is on 225. The 270 degree direction is likely to bring the passage back out into the valley unless it pitches.

2433 Photos :-

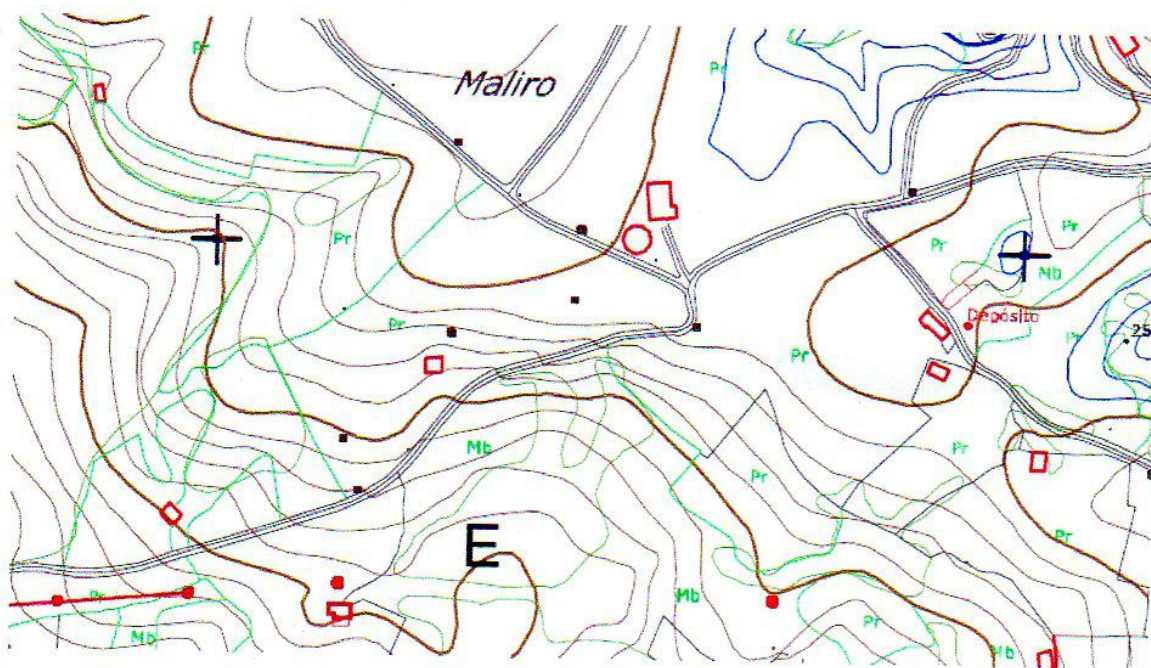
a&b entrance rift, c the large slab, d natural belay found close to pitch head, e modified pitch head, f&g John exiting.

Site 2434 marked D was visited.

To get to this find a convenient place to cross over the fence running round the field in the valley bottom. We determined we were at the right spot after a quick search around the original GPS reference. The GPS fix we got was 30T 0447262 4799772 Alt 277m. A very tight 6m deep shaft can be seen to a floor with a broken hammer. Work stopped when the hammer broke. The shaft is undescended and would need some serious capping. No draught was noted on this occasion.

2434 Photos:-

a&b John and sandstone slab blocking top of shaft.



John and I were dropped off by Steve to have a look at the area marked E above. Cross the field below the road and into the wooded area. In the middle of the jungle are some large depressions, one has a hole in the floor which could be dug. No sign of bedrock though. The GPS fix we got was 30T 0446155 4799287 alt 225m WP334 Site 2828. We left after John scared a farmer who was wandering around with his dogs and who hadn't seen us until John spoke to him from about 4 ft away. He didn't know of any holes in the area.

Friday 19th October 2007

John, Steve, Chris and Ian Chandler.

Visited site 1103. Ian had a quick look round the chamber, no draught was noted. Ian and I then took a survey line out from the base of the squeeze in to the chamber out to the entrance.

@ ideopueta

After looking at the rising at Los Boyonnes, we went to try and locate a cave described to Ian by a farmer. (We now think this is in the index as site 2768) We had no location for the feature so split into teams to look for it. John and Steve found a fenced shaft and a possible cave nearby. These were found to have been noted previously as sites 2772 and 2796. Ian and I came across 2 other unrecorded sites:-

WP335 Site 2829 . A possible dig in the side of a bulldozed track(cold hole) alt 317m 0446522,4796387.

Photos a,b and c.

Wp336 Site 2830 ³⁴⁷ 315m alt 0446567,4796317. In side of bulldozed track found today descended on 20th.

Photos a,b,c,d show entrance and root that had forced its way past calcite then down the 9m pitch.

Photo e Chris exiting shaft 9.1m deep into rift approx 220 deg direction goes 4m in each direction.

Sat 20th October 2007

JS, SC & CC

Descended WP336 site ²⁸³⁰ see description above.

Descended site 2772 alt 412m 0446692,4796230. (25ft) 8m ladder to slope descending a further 4m to choke no draught. Not promising.

Site 2796 alt 401m 0446692, 4796280. Vegetation removed no cave found unlikely dig?

Sun 21st October 2007

JS & CC

Talked to farmer and after quizzing him about caves he told us of one just down the road.

An hour and a half of thrashing down 12 ft high thorns saw us at the entrance to a small resurgence cave. Site 2831 Photos Thicket before x1, Cave ent x2 Thicket after x1 and from road x1.

Need to investigate where the water sinks, too much jungle whilst we were there.

WP 339 is 7m N of ent to cave, 205m alt approx 0445822, 4800529.

Wp 341 Site 2832. Shakehole with undercut and lots of foul smelling animal shit. Visited first by John on 21st then by both of us on 22nd. Wp341 alt 268m 0446638,4800645. Possible dig.

Monday 22nd October 2007 JS & CC

Wp342 Site 2833. Alt 220m 0445828,4799848. Below road in smallest and highest shake. Sandstone outcrop and farm rubbish, possible dig.

Wp343 Site 2834. Alt 230m 0445891,4799859. Hole, by road junction with pallets and large blocks, stones fall 40ft? draughting in strongly, needs tackle. Large shake. Photos:- Pallet hole, from car and down pallet hole.

Wp344 Site 2835. Alt 230 0445884,4799950.possible dig in shakehole no photos.

Wp345 Site 2836. Alt 262m 0445831,4800070. Small cave entrance on ridge just below hilltop not obvious but stay at bottom of outcropping rocks. Photos:- Entrance and looking back to road.

WP346 Site 2070. Alt 250m 0445918,4800182. Choked cave in shakehole covered by tree and branches. Partially rotted calf in bottom. Shot of tree covered wp346 dig/cave

Site 2784 256m 0446069,4799981. Entrance has had snapper used on LHS looking in. opens onto shaft. Entrance walled up with boulders and manure...

Chris Camm

MATIENZO CAVES PROJECT