

Site 3234: Cueva-Cubío del Llanio (Cold Store Cave)

Riño ETRS89: 30T 0451519 4800779 Altitude 165m
Length 3531m Vertical Range +32 -45m

Surveyed during 2009 - 2013 using tape/Disto, compass and clinometer or DistoX as detailed below. Survey intended to be BCRSA or better but there are doubts about the reliability and consistency of the DistoX.
Easter 2014 notes generally relate to the area SW of Bird's Wing Chamber when no survey was carried out (DistoX malfunction).

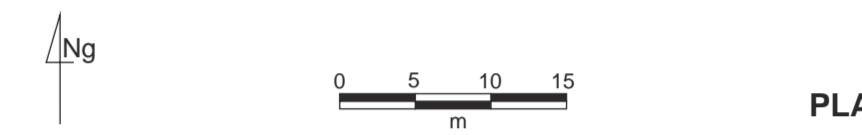
Drawn in Corel Draw by Juan Corrin
VERSION 1 8th September 2009; VERSION 2 16th July 2010
VERSION 3 14th September 2010; VERSION 4 18th May 2011
VERSION 5 15th September 2011; VERSION 6 4th December 2011
VERSION 7 18th February 2012; VERSION 8 23rd June 2013
VERSION 9 23rd May 2014

Batch name	date	surveyors	method
09-01	entrance passages	JC, HL	C/C
09-02	No High Hopes	JCL, JC, HL	C/C
09-03	east to dig	JCL, JC, HL	C/C
09-04	N beyond The Hub	JCL, JC, HL	C/C
09-05	east beyond dig	AN, PP	C/C
09-06	east beyond dig	AN, PP	C/C
09-07	W from stn 6	JCL, HL	C/C
09-08	Pulse Racer	3-4/8/09 JCL, PPA	C/C
09-09	N beyond The Hub	JCL, JC	C/C
09-10	Beyond Snap, CAP	13/8/09 JCL, JC	C/C
09-11	Beyond Snap, CAP W p	13/8/09 JCL, JC	C/C
09-12	Beyond Snap, CAP S p	13/8/09 JCL, JC	C/C
09-13	p15 beyond 32m aven	13/8/09 JC	C/C
09-14	Blood Sweat Tears p	29/11/09 PP	C/C
10-04	Baster dig / crawl	2/4/10 JCL, TCL	C/C
10-05	Horny Dog (various Easter dates)	TR, PP	C/C
10-06	east below aven	3/8/10 JCL, PPA	C/C
10-07	low level SE	13/8/10 TR, PP	C/C
10-08	PCHP Extension	11/8/10 JC, JCL, JS	C/C
10-09	Aven pitch	11/8/10 PE, AN, TR	C/C
10-10	W side of PCHP Ext	13/8/10 JO, JL, SR	C/C
10-11	PCHP Extension	13/8/10 JO, JL, SR	C/C
10-12	PCHP Extension	16/8/10 AN, PE	C/C
11-01	Lazo de Ancianos	26/4/11 PPA, DM	C/C
(No survey of NW leads inspected during summer 2011 - all abort)			
12-04	Aven Extensions (various Oct dates)	TR, PP	C/C
12-01	Bela Shaft, etc (early Feb)	TR, PP, BB, SP	C/C
12-02	West Wing	31/1/12 TR, PP, BB, SP	C/C
13-01	Bird's Wing	3-4/13 TR, PP, LK, WM	C/C

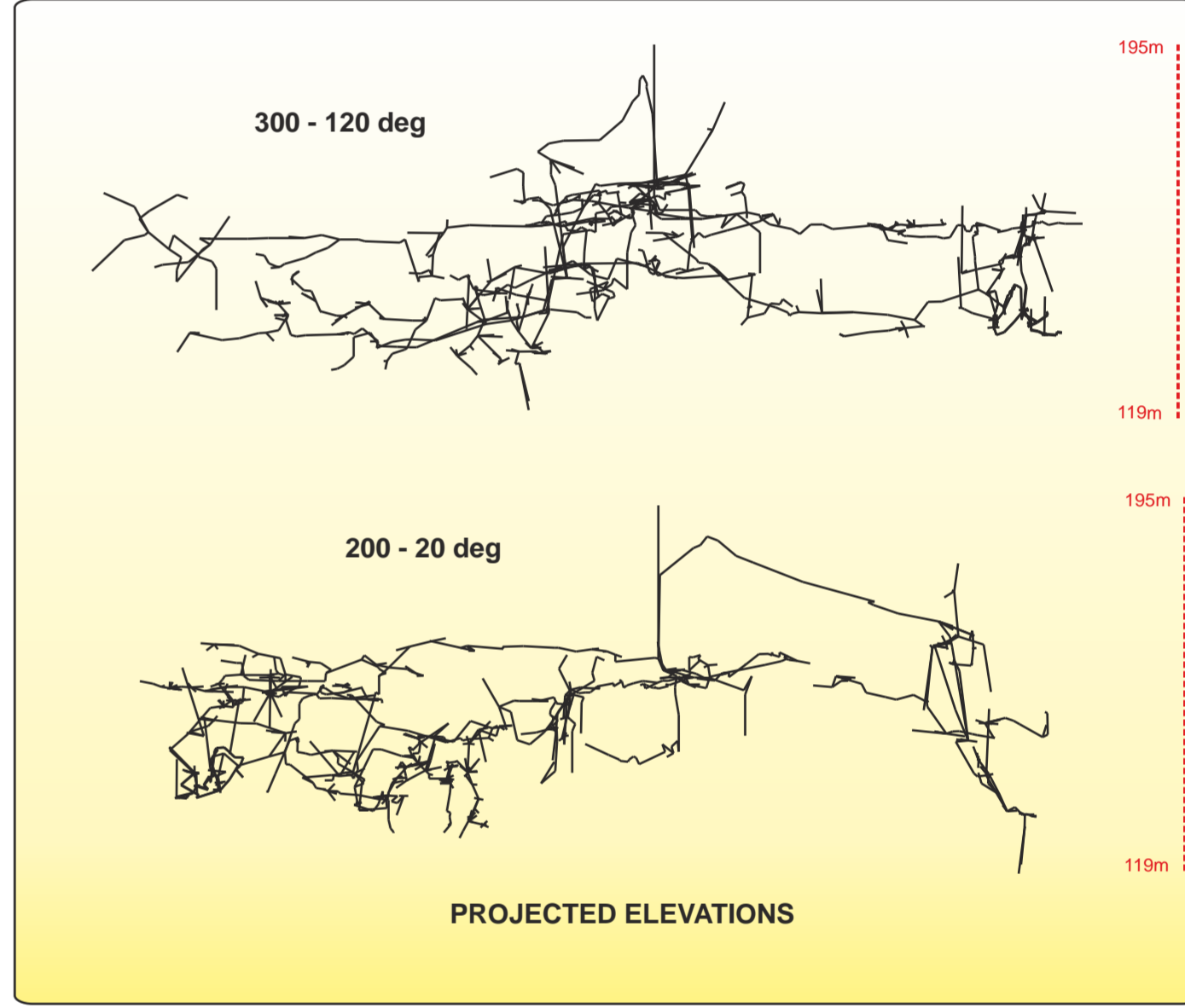
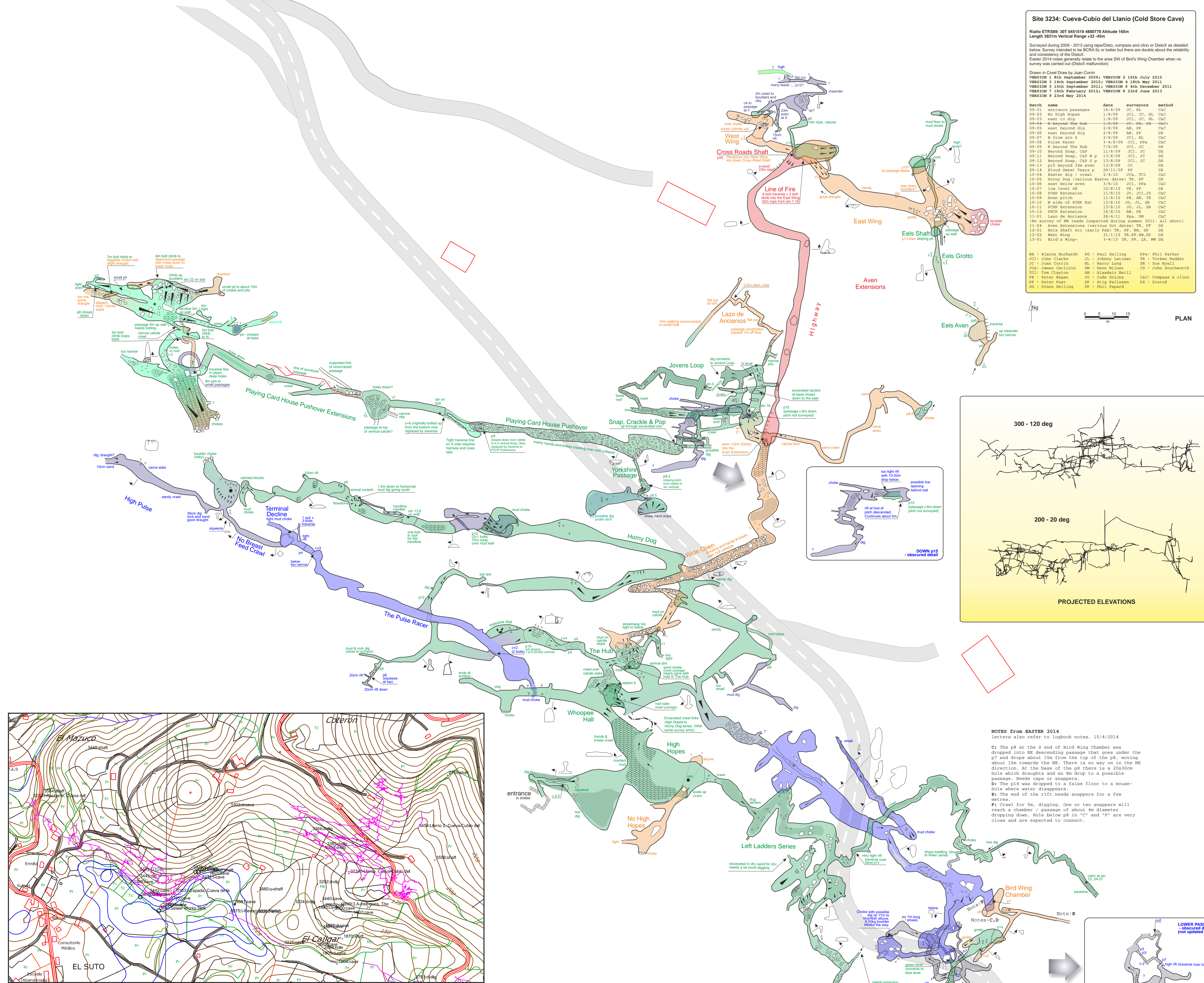
BB : Bjørn Buchardt
JCL : John Clarke
JC : Juan Corrin
JCA : James Carlisle
TCL : Tom Clayton
PE : Peter Eagan
PP : Peter Pate
SG : Simon Gelling

PG : Paul Gelling
JL : Johnny Latimer
HL : Harry Long
DM : Dave Milner
AN : Alasdair Neill
JO : Jude Onions
PP : Peter Pate
JP : Phil Papard

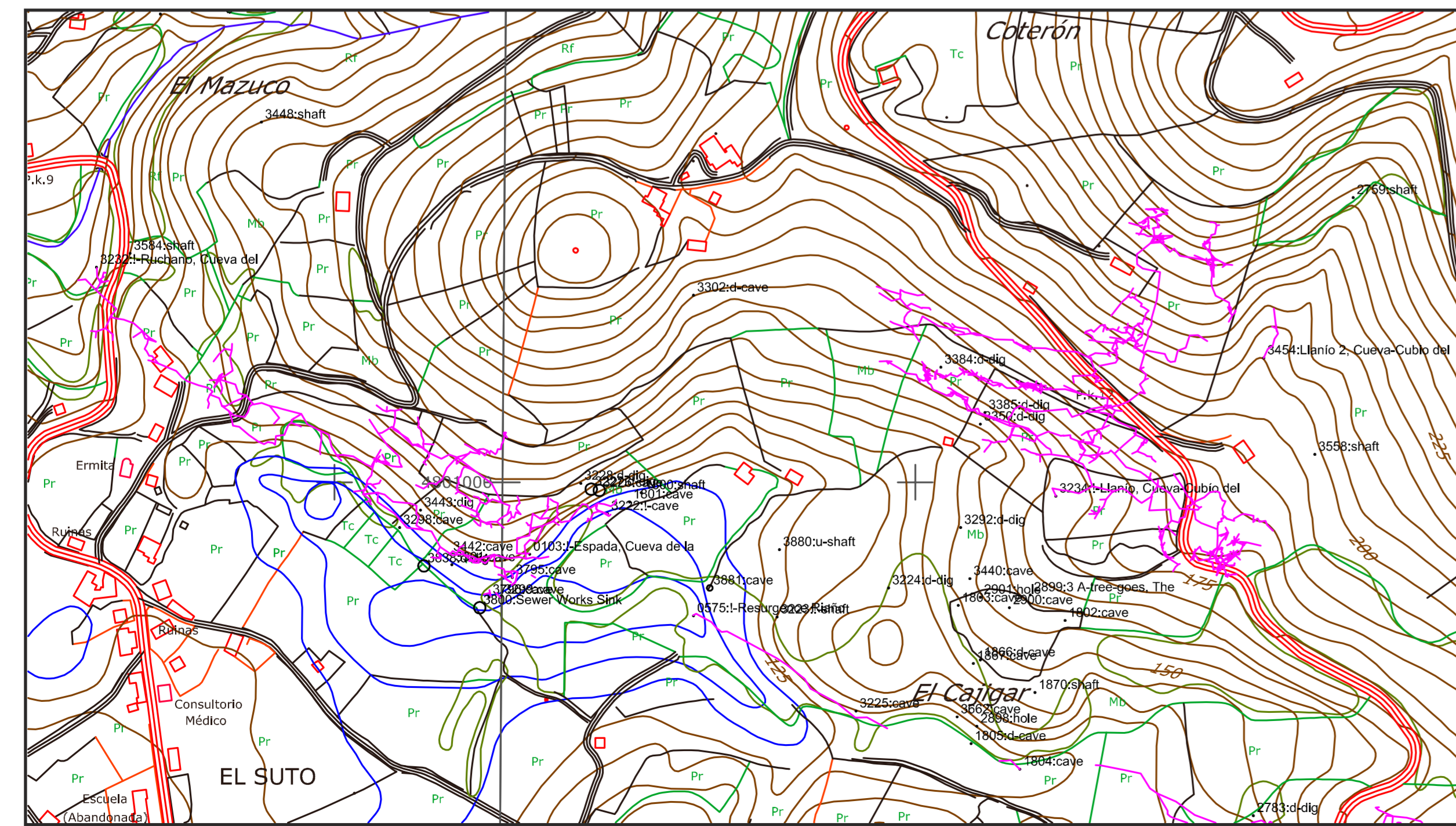
PPA : Phil Parker
TR : Torben Redder
SR : Sue Ryall
JS : John Southworth
C/C : Compass & clinometer
DX : DistoX



PLAN



PROJECTED ELEVATIONS



500m

NOTES from EASTER 2014

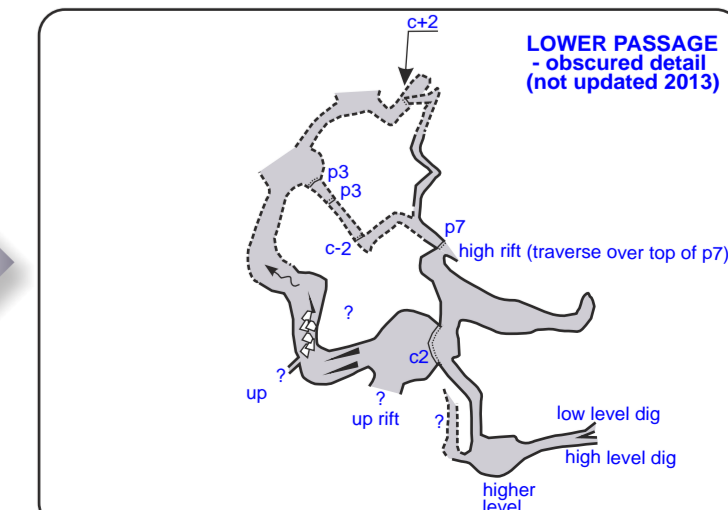
Letters also refer to logbook notes, 15/4/2014

C: The p8 at the S end of Bird Wing Chamber was dropped into NE descending passage that goes under the p7 and drops about 15m from the top of the p8, moving about 15m towards the NE. There is no way on in the NE direction. At the base of the p8 there is a 20x30cm hole which draughts and an 8m drop to a possible passage. Needs caps or snappers.

D: The p14 was dropped to a false floor to a mouse-hole where water disappears.

E: The end of the rift needs snappers for a few metres.

F: Crawl for 5m, digging. One or two snappers will reach a chamber / passage of about 4m diameter dropping down. Hole below p8 in "C" and "F" are very close and are expected to connect.



LOWER PASSAGE - obscured detail (not updated 2013)