

# LOGBOOK

Year: 2008

Season: Whit

Logbook pages scanned to jpg then combined into a pdf file using <http://smallpdf.com/>

*Juan Corrin, January 2015*

> Message du 10/05/08 14:07  
> De : Uzueka@aol.com  
> A : martin.barnicott@wanadoo.fr  
> Copie à :  
> Objet : Matienzo site 2414

Hi Barny,

Hi Barny

I've attached a jpeg of the old 2414 survey with your entrance as a red blob. You'll see immediately that there are problems!!

The cliff line runs definitely W to E or NW to SE; you walk down the hill towards the NNE and hit the drop below at about right angles.

However, there may be a solution. Perhaps your final leg in the survey (coming out) was on the the surface to the fridge?? The small alcove with a tube going to the surface might still work (the crack is marked on the old survey) but on different stations.

Let me know (no hurry!) if this has happened - or if the compass has gone wrong or there are some back bearings involved!

(I can still get a grid reference for the other two sites by looking at the depression with the holes behind. When I first found 2414 I bashed through from above but went to the west to get down the drop, so missed the two shafts).

Cheers

> Juan

>

> [ 2414-old.jpg (24.6 Ko) ]

Juan

I am sure we will be back and do it again. (A long day! trip Dave???)

Will check with Dave re. the last leg.

The general shape looks OK in my drawing however

The good thing is that we can only improve!

Barny

May/June Vaca survey PW.

Tackle list reviewed

Footlog description Uzueka

Sautolevi

Tali.





## Uzueka Discoveries - Easter 2008

### Uzueka reccie and Gour Inlet extension discovery

Thu. 20 Mar. 2008

Footleg, Paul Dold, Nick Fincham

With the weather forecast for the coming week looking very wet, we decided to make a reccie trip into Uzueka before the weather broke, in order to familiarise ourselves with the system and maybe survey a bit of the known main passages for which the original data had been lost. I had been as far as the low wet crawl/duck just beyond Pig Trotter Hall before, but had not gone through as it was unexpectedly wet on that trip. So we quickly reached that point. The long duck was easily passed, and turned out to be the wettest of the obstacles leading to the big passages. This surprised me a little as the description of the cave implied that there were other wet and squalid sections to the route, but glosses over the fact that this section of passage is a low airspace crawl which makes for a 10m long duck best passed on your back with your face to the ceiling.

Once in the Gorilla Walk we made good progress along the variously stooping and crawling wide bedding passage half full of water. We were rather surprised when the main river unexpectedly sumped just after we thought we had passed the 2<sup>nd</sup> river inlet, and we spent some time in some crawls which are on the right side of the Gorilla Walk in this area. We started up a small inlet before realising this was the wrong way. These passages do not appear to have been surveyed. We realised that we had been fooled by the scale of the survey we had with us underground, and had only actually reached the start of the phreatic zone. We rejoined the main passage and investigated a big aven off to left of the main passage which looks like a fine bolting project. A fine second aven can be entered via a slot in the wall of the first aven. Again this is not on the survey. We then entered an exciting looking wide flat bedding plane under one wall of the first aven and found ourselves back in the main passage again, instead of the exciting new lead we thought we had found! We continued on up the main passage to the true 2<sup>nd</sup> river inlet which leads to Riaño. Here we noticed that the main flow of water actually comes out of a completely separate inlet just beyond the 2<sup>nd</sup> river inlet. We looked at this and the water comes out from a flat out low airspace tight crawl. Like most of our exciting 'new' discoveries, we later found out that Lank and Harry Long knew all about it as we talked to them in the bar about our trip. It just isn't marked on the survey!

We now continued along the Near Stomps, not really knowing where exactly we were due to the small scale of survey and lack of significant landmarks. Eventually we arrived at Gour Inlet which was the first positive feature we could identify, easily recognised by the cream coloured flowstone on the stream bed where it emerges into the main river passage. We took a look up this, crawling in water and found ourselves back in the main passage again! The inlet actually comes into this bedding oxbow crawl part way round, and we located it on a second lap. Initially flat out in the water it quickly gains height and we explored to an impressive aven at the end where a bolting project has been partially undertaken in the past. Using a laser gadget, we measured the aven ceiling height to be at least 35m above the floor when standing in the stream. While looking around this large final chamber Paul traversed along a ledge to enter a passage several metres up the back wall which appeared to have been entered before. Meanwhile Nick checked out the low airspace pool where the stream emerges into the aven and confirmed it sumped a few metres in. Paul returned after a while, having found a way on via a slot hidden in the wall behind a flake which led into new passage. This had clearly not been entered before, as the mud floor was untouched shiny sticky mud. He had followed this passage to a pitch down into a streamway. When he returned we could not be sure if this was the main Uzueka water or not as he did not take a compass with him. Needing to be out in time for birthday celebrations that evening we called it a day and after a quick look along the Far Stomps to see if Paul recognised the passage from what he had seen down his pitch, we set off out. We decided to take the 2<sup>nd</sup> river inlet to connect to Riaño and complete what we think is the first ever Uzueka to Riaño through trip. This inlet was confirmed to be awkward in places, having three tight sections near the Riaño end. The first is a squeeze between a solid limestone roof slab and flakes on the floor, followed by two flat out tight squeezes in the stream which we had to dig a bit of the gravel out of to pass.

1986 - 1st

Once in Riaño we were on familiar ground and made it to the entrance in around 2 hours. We were fairly clean until the final few metres exiting Riaño, where the rain had caused a liquid mud puddle to form in the flat out entrance crawl. We walked back to the car outside Riaño bar, giving several locals a good laugh as we passed them sat outside their houses watching us walk by covered in liquid mud.





**Uzueka Gour Inlet survey trip and exploration of new streamway**  
Fri. 21 Mar. 2008

Footleg, Paul Dold, Nick Fincham

With the weather still holding for another day, we returned to Paul's discovery of the previous day to survey the new passage and descend the pitch at the end. Having worked through the entire Uzueka survey data file over the previous 2 months, I had determined that the original survey data for the whole of Gour Inlet was lost, so we started surveying from the junction in the Near Stomps. Once we reached the aven chamber at the end of the known inlet, Nick set up the stove we had brought in and we made some soup to warm us up. We rigged a ladder on the climb up into the start of the passage beyond to make it safer, and continued the survey through the muddy crawling passages to the pitch. Then while Paul started bolting and I finished sketching, Nick returned to fetch the ladder as Paul had forgotten we needed it to descend the pitch! By the time we were ready to descend, time was getting on, so we decided to have a quick look at the streamway below but finish the survey at the top of the pitch for today. We were already clear that this was new passage heading away from the known cave because we were trying out surveying using a Palm PDA and Auriga cave surveying software. This plotted the survey as we entered the data, and added it to the map of the existing cave I had already entered in advance. We were heading roughly due East away from any known passage in Uzueka.

The pitch was a straight hang of around 8m into a widening rift. Landing in a thigh deep pool, the stream entered down a 2m cascade which was covered in the same cream coloured flowstone which is found all along Gour inlet. Downstream sumped round the first corner, but upstream led into a big hading rift where we could climb a long way up a precipitous slope to a point where we appeared to be below a large boulder choke. Climbs up into the boulders looked possible but precarious, and a lot of rubble had obviously come down into the chamber from this choke in the past. Continuing upstream at the base of this chamber, the stream soon sumped again, but an obvious dry oxbow provided a bypass and the stream was regained. Further crawling on cream coloured flowstone in the stream led to another sump, with another dry oxbow. But this time the oxbow led into a boulder choke and with no easy way on, we called it a day. With passage still needing to be surveyed, we decided to leave most of the equipment in the cave and made a fast exit via the Gorilla Walk and the Uzueka maize field entrance we had come in.

That evening we found out that the Giant Panda entrance which entered the Gorilla Walk at Windy Inlet had been fully opened and stabilised, so future trips would be possible via this faster way in. This entrance bypasses the most flood prone sections of the entrance series and Gorilla Walk, but the weather broke that evening and the river in the Matienzo depression the following morning was flooding over the fields. The main stream in Uzueka looked like it would be too wet even via this new entrance to be safe. The rain continued for several days and we wondered if we would be able to get back in before the end of our Easter visit.





**Uzueka Gour Inlet follow up trip and further extension**  
Wed. 26 Mar. 2008



Footleg, Paul Dold

Finally with the rain easing off again, and water levels in the valleys noticeably lower, we decided to try and get back down Uzueka via the new Giant Panda entrance. There was a sizable stream sinking next to the entrance, but this water was not met in the cave until the last rope climb at the bottom of the pitches. The stream then conveniently sinks down another slot in the floor just before the first lower awkward section and is rejoined in the rift beyond. We were back in the Gorilla Walk in 30 minutes, with a substantial amount of water entering with us out of Windy Inlet. This had been completely dry on our previous trips. The Gorilla Walk had plenty of airspace from here onwards however, and we made quick progress to the head of the pitch into our new stream passage.

We surveyed as we went upstream, working quickly as a two man team with a laser measure and PDA to enter the data into. The only problem was hearing the measurements being shouted at me by Paul when in the hands and knees crawling sections of the new streamway. Once we had reached the final boulder choke we both found separate routes into it to investigate the potential for ways on. Paul went higher up, while I squeezed in horizontally at the bottom. I reached a place where a possible continuation was visible through a small hole, and the floor appeared to be mainly loose shale which had fallen in down the slope I was sat on. So I started digging with my hands, and the spoil kept disappearing into a void under a large boulder on the right side of the slope. A large solid boulder was blocking the way on, but I managed to excavate a way down under the boulder where all the spoil was vanishing. Squeezing down I was in a flat out wide space below the boulder, but the same chock stone was blocking the way onwards. I returned to the top of the slope and tried to fit through the triangular hole above the chock stone, but it was smaller than my pelvis. So I tried to chip away at the rock and the wall with another rock. Paul had joined me by this time, and I decided to go back to the ladder pitch to fetch a hammer and chisel.

Paul took over digging while I went back for the gear, and when I returned he told me there was good news and bad news. The bad news was that my trip to fetch the chisel had been a waste of time. The good news was that this was because the chock stone had been removed! Paul had been removing the shale fill around it and found it was not holding up the large boulder as I had thought. So it just dropped into the space under the boulder leaving the way open. We decided to survey as we explored, so we could return with useful data for everything we had explored. The route on through the boulder choke was now completely open, and soon led into a large chamber with a damp sandy floor which climbed up to a summit in the middle of the room. We named this chamber the 'Soggy Sahara'. From the middle of the chamber the stream could be heard louder than ever, and was found entering the chamber down a 3m cascade at the far side and sinking into the floor. Upstream from here required some careful traversing over a deep pool with a low ceiling, before opening up into a fine tall walking rift passage. Passing some fine lone straws hanging right in the middle of the passage, a long straight section brought us to a right angle bend and more taller fine walking rift. A loud rumble was audible in the distance, and getting louder as we recorded each new survey leg.

Finally we reached the source of the sound, a 6m diameter circular chamber with water raining down from above into a deep pool. The rift just before this point was over 10m high, and the aven itself was impossible to measure due to the spray from above. The water was coming down all over the place, so either it was broken by a ledge as it fell, or it was coming from more than one passage above. I thought I could see a substantial amount of it emerging as a spout about 15m up, but it was so wet we could not be sure of anything. Finishing the sketch with water pouring across the page, we retreated from the spray, wind and noise to start heading out. The most appropriate name we thought of for this pitch at the end of our passage was 'Sensory Deprivation'.

Exiting via Giant Panda was entertaining as the water levels had risen noticeably. In the Gorilla Walk the airspace was lower but still around 50cm. The rift squeezes were wet but not too wet, but close to the pitches it was clear that a lot of water was coming in somewhere and I could not find the way on. Back tracking to a side passage which looked tight, I tried to push on, but found it too awkward. Then Paul had a go and concluded we had not come through anything that tight. So we headed back up to the wet rift I had reached before, and found a climb up just before the water came in, and the awkward section above which was still dry. Back at the bottom of the pitches, the first climb in the full water flow was very wet, but the main pitch was dry at the bottom. However some of the water was met part way up, disappearing behind a flake before the base of the pitch, and the top half of the pitch was rather sporting. Arriving completely clean at the pitch head, we then got completely muddied climbing up the last few metres to the surface. But the substantial stream allowed us to wash off on the surface before walking back to the car at around 1:30am.



94

Alpine Chough 0099 @

2	<del>Interim</del>	<del>0452490</del>	<del>4797473</del>	<del>↑241</del>	
1	<del>0099</del>	<del>0452338</del>	<del>4794747</del>	<del>↑547</del>	
4	<del>Beauties?</del>	<del>0452267</del>	<del>4797521</del>	<del>↑163?</del>	
5	part of 898	0453886	4797080	↑560	Below 898 in shallow valley ✓
6	99	0454032	4797222	↑565	A. Chough
7	✓	0453743	4797220	↑494	Beauties ✓ draught hole
8	3001	0454044	4796933	↑553	below 1197 in valley below enclosure

New site near 1572 2997

Grid ref from Sigpac: 451773 4796486

Two caves at the head of a grassy gully, by a large hawthorn tree. The cave on the left is a small 6m passage leading to a chamber with a flowstone left-hand wall. The entrance on the right leads to a crawl becoming very small after 15m. The cave contains some cobbles and like nearby 1572 is probably evidence of a very old level of development.

1829

Depth 16m

The excavated entrance is the top of a 6m shaft into a small chamber where a rift on the right contains the draught entering from site 1813. A 2m deep slot leads down to the head of the final 8m pitch, which is a narrow rift and completely choked at the base.



## Notes from Whit team: Chris Camm, John Southworth and Baz Hunt

### 29 May 08

Trip to look at potential leads in **Pallet Hole 2834**.

JS CC and big Steve.

Accosted by farmers wife from dwelling below road, wanted paying for us to go down the cave! soy es muy pobre so she got nowt.

cave was draughting out today, several leads explored, one leading to a chamber.

The draught is coming out of the choked floor here.

In this chamber is a high level passage leading out which requires a small person inserting!

There is also an interesting rock above the entry point to this passage, which is probably best not touched.

**Site 2871** Dug and capped boulders off top of shaft. 4m deep ladder pitch to choked floor of rift. 4m long rift with hole at each end. Both choked, one hole has slight draught and rocks can be made to fall around 3m.

Photos a-f of JS digging entrance out taken CC.

Photo g taken Baz Hunt.

Videos a&b CC capping taken JS.

**26 May 08.** GPS of path 3m from hole WP369 (SITE 2871) acc 5m elev 109m 0456085 4799351.

Hole is 3m to the south.

wp371 (**Site 2979**) 5m acc:- alt 346m 0456459 4802049

Choked stream sink between 2 trees at down stream end of gully.

Water supply for farm taken further upstream. between here and road is cultivated allotment adjacent to farmhouse.

no photos

WP372 (**Site 2980**) 6m acc alt 260m 0445949 4800147

GPS location taken at entry to thicket leading to sloping cave opening onto shaft. Found by JS.

2 Photos a&b(panorama) taken by CC, Baz hunt pointing towards ent.

2 photos c&d CC hauling tackle taken by Baz.

survey notes:-

ent, 1, 5.0, -35, 225

1, 2, 5.0, -90, 0

2, 3, 3.0, 0, 45

3, 4, 4.0, +10, 45

Short pitch into choked rift.

Lots of cow bones. No Draught on draughting day!

WP 373 (**Site 2981**) 6m acc alt 219m 0446200 4799683. Dig.

Small draughting hole choked by earth under one of 2 oak trees by fence.

Photos taken by CC looking downhill and slightly to the left back towards nearby road from entrance. Beware of Fresian bull with attitude in adjacent field!

**1st June** returned and dug in entrance, needs more digging. Stones fall a few feet and an old bottle is visible in the fill. A small hole has opened up in left hand wall. Good draught. Entrance will need a cover to keep farmer happy.



Wp375 (**Site 2982**) acc 5m alt 238m 0445992 4800286.  
2m deep choked narrow rift.  
Photos Js at ent taken cc.

---

WP376(**Site 2983**) 5m acc alt 228m 0447640 4799161  
possible dig 3m below prominent rocky outcrop.  
facing uphill site 2984 is 4m to right.  
photo of entrance taken cc.

---

Wp377 (**Site 2984**) acc 5m alt 229m 0447638 4799165  
Possible dig approx 3m below outcrop.  
Looking up hill this site is 4m to right of site 2983.  
Photos taken CC (a) of entrance and also one of righthand edge of outcrop(b).  
photo (C) outcrop. Both sites located in huge cleared depression.  
(d)View back across depression to car parked opp road junction.  
Just beyond the car in the edge of a wood and below the road is a large rubbish filled depression.

---

WP378 (**Site 2985**) 5m acc alt 198m 0447649 4799158  
dig approx 2m deep. at end of bulldozed track.  
Photo a taken cc, b with entrance marked taken JS.

---

WP379 (**Site 2986**) 6m acc alt 202m 0447665 4799146.  
4m deep dig against bedrock no draught.  
2 photos of john at ent taken by CC.

- Facing the hillside 3m left and 3m above a small cave (**Site 2987**) runs off under a sandstone bed.  
- No Gps photo of john pointing at ent.

---

### 30 May 08

WP381 (**Site 2988 Dos Perros**) acc 7m alt 199 0446896 4799229  
In cleared depression behind barn. Probable cold store leads to draughting dig.

### 31 May 08

Enlarged draughting dig to top of pitch. Unfortunately top of pitch is a collection of large loose blocks supported if that is the right word by several larger blocks which have little visible support. A safe descent is not possible yet from the point of entry.  
Further exploration needs a bolt route out along the lefthand wall, to see if the far side of the pitch offers a safer descent. It is not at all clear what is holding up the top of the pitch!  
The draught comes up the pitch.

### 2nd June

Returned with bolting gear and big Steve who had doubted our description. Steve stepped across whilst lined and confirmed our assesement. No safe way down or back!. A return is planned with some means of remotely dropping the boulders. A descent at the moment could be suicidal.  
Pitch is approx 12m deep.  
Photos a,b&c CC entrance before and after clearance.  
rest of photos JS.  
e the choke blocking the way towards the pitch.

---



WP382 (**Site 2989**) 7m acc alt 382m 0448144 4796278 hole(dig) in side of road draughts slightly. Photos CC.

---

Wp383 **Site 2990** 6m acc alt 365m 0448067 4796301

Shaft with trees in it about 5m deep.

Noted **31 May** descended **3 June**.

See photo d shaft is in the foreground on the intersection of a horizontal line drawn to the left, through the large boulder and another vertically down through the farm.

There is a much smaller depression with choked slot, adjacent to and just above the shaft.

Photo b of choked slot. Photos taken CC.

---

WP384 **Site 2991** acc 6m alt 407m 0448209 4795996

**3 june 08** narrow choked rift with stal 1.5m deep side of road 2 photos of ent taken CC

---

WP385 **Site 2992** acc 6m alt 435m 0447846 4795605

**3 june 08** choked dig, rocks fall several m. photo john at ent taken CC

Situated at lefthand edge of small scar below main Alias road and above side road.

Best approached up field from side road.

---

WP386 **Site 2993** acc 5m alt 359m 0448077 4796313

**3 june 08** small fenced shaft drops into parallel shaft where daylight enters between surface boulders. Depth 4m blocked by boulders quite narrow. Location within a few metres of Site 2990. Photos John in shaft and entrance taken CC.

---

WP387 **Site 2994** acc 6m alt 300m 0447505 4797143

**3 june 08** Short choked fossil passage by side of road 3m long. Photos taken CC.

---

WP388 **Site 2995** acc 5m alt 253m 0447540 4797341

**3 june 08** Entrances below road in mass of thorn bushes with tree. Photos taken CC.

Facing uphill there is a possible cave entrance to left(photo b) may just be large boulder covering rift.

**Site 2995** (photo a) is a rift entrance which goes to t junction after a couple of m.

Left rises and is almost certainly going to the other feature. Right can be followed down over boulders in a narrowing rift where we were stopped. A thinner person would get further. The site draughts well. Depth approx 6m.

---

WP389 taken on road approx 10m above **Site 2996** acc 7m alt 277m 0447530 4797484

**3 june 08** Entrance below road almost opposite **site 1815**.

Photos taken CC.

Low cave entrance which has been walled up to stop animals entering. Both this and site **1815** were draughting out today.

This site(**2996**) would need digging to progress.

---



### Wednesday 4<sup>th</sup> June 2008

Pete, Steve and Juan returned to **sites 2998** and **2999** found yesterday by Penny and Pete.

Parked at Penny's Cave and walked up the track by Barandas and into the valley. Up through trees and valley bottom on the left leads to **site 2998 Pretty Fox Cave**, a descending cave which has yet to be explored.

**Site 2999** is beyond on the edge of the trees, with a large hazel tree in the shakehole. Steve and Pete enlarged the rift over an echoing 20m drop. More capping is required but the site looks good.

Juan wandered around the valley and eventually descended the first pitch in **site 429** which didn't match the description. A 4 x 3m oval shaft in the trees descends over narrow leafy ledges to a floor of boulders at about 9m down. A much narrower drop continues past an enlarged section. This second drop was explored years ago to another 6m or so depth where one route closed in and the other needs further exploration.

**Site 3000** (in the next depression up the side of the valley from site 429) is a small narrow drop, about 4 - 5m deep, that needs opening up at the top

2998 @ 30T 0449960 4796202

2999 @ 30T 0449904 4796191

3000 @ 30T 0449889 4796245

On a previous occasion, Pete has dug at the bottom of **site 2663**, following the draught down an inclined bedding. The site now needs enlarging.

### Saturday 7<sup>th</sup> June 2008

Juan and Penny strolling around the Arnilla area above and around sites 2998 and 2999.

Parked at Penny's Cave and walked up the track by Barandas. Just before Barandas comes into view, **site 2576** is visible up on the right. A short climb lead to a 2 x 1m "chamber with a tube going off at the back, possibly passable by a small person. (photos).

Then took photos at **site 60 Arnilla** and **site 361**, a fenced 8m shaft.

Higher up the hill new **site 3002** is a 2 - 3m deep undescended shaft partly covered with a slab.

Climbed higher up the hill then returned via 2998 and **site 3000** (photos).

### Sunday 8<sup>th</sup> June.

Pete, Steve, Juan return to 2999 more capping. Nearly @ head of pitch.



Subj: **Mullir**  
 Date: 15/06/2008 15:21:58 Romance Daylight Time  
 From: [smith\\_peter2004@yahoo.es](mailto:smith_peter2004@yahoo.es)  
 To: [uzueka@aol.com](mailto:uzueka@aol.com)

Hello,

Yesterday was a really nice day, so we decided to get sun burnt on Mullir instead. We went to the present end of the track, where it's working towards the head of San Miguel valley. There's another track working towards it from the other side too.

We didn't see anything of interest (except a hare and the usual orchids!). But we met a couple of cavers from Castro Urdiales who had parked by Cave of the Wild Horses. Pirating, but very nice about it, they said "we've just come for a walk, but we've happened to come across a couple of shafts, it doesn't look like they've been dropped, and we just happen to have a couple of ropes, only short ones because we weren't expecting to do anything, but we just happen to have all our srt kit, helmets, lights, fleece suits, karabiners, slings..."

These shafts were above the one you think has been covered over, 700 and something, where there is only 316 and 317. The GPS coordinates were: 455345 4796533 and 455276 4796526.

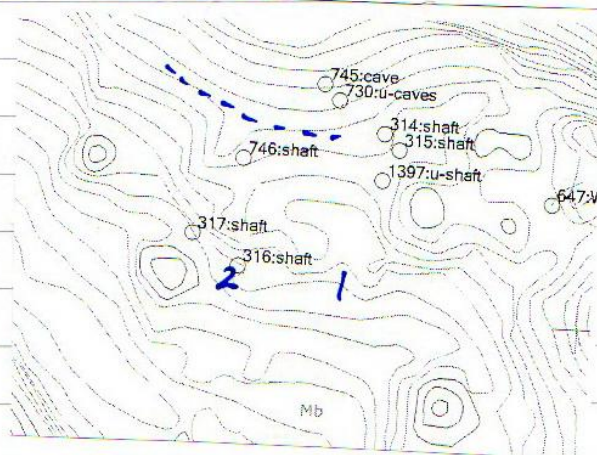
The bigger one (317?) is the one we watched them go down and it matches the description except that presumably they started lower down in the depression than originally so it was a lot less than 30m deep.

With Sue and Steve about to leave, I expect it'll be quieter now, - you'll be the next to disturb the peace here! One little project for me is to get GPS coordinates for some of the older sites, beginning here on el Naso.

The only news I've heard today is that they've started mailing Studies in Speleology (with the "crania" article).

Cheers

Pete



Subj: **Re: Mullir**  
 Date: 15/06/2008 21:29:01 Romance Daylight Time  
 From: [smith\\_peter2004@yahoo.es](mailto:smith_peter2004@yahoo.es)  
 To: [Uzueka@aol.com](mailto:Uzueka@aol.com)

Hi,

1 is 316 and 2 is 317. As I said the descriptions match quite well apart from the depth of 317, but that's probably because it was originally done from the top of the shaft not half way down the shakehole. That's the one we saw them do, and I heard the guy say something about formations. I've checked on sigpac and there do seem to be trees that could be the shaft at the GPS location.

Cheers



## **MATIENZO CAVES PROJECT**