

LOGBOOK

Year: 2007

Season: Whit

Logbook pages scanned to jpg then combined into a pdf file using <http://smallpdf.com/>

Juan Corrin, January 2015

0

Juan

Weather not very late May like! Sat was very wet and about 12 deg, it got better and when the sun was out it got to 20deg, but not much sun and then it was about 16deg so not good for draughts. I left my PDA in my work bag in boot of car so did not have all the maps I had sorted! Still I had my GPS, Web site disk etc.

We did not do a lot as only there from Fri to Fri. Description and pics attached.

Phil

2587 Walled Cave

27 May 2007 Big Steve and PP

Survey and photo trip with Hilary and Susie in support. Walked up from Sel De Suto in heavy rain on a cold and windy day – not very late May like!

No further extension from previous trip – end must be near surface but if you did a bit of digging you could get a few extra metres.

0-1	6.44	245	-1; dig near surface
1-2	9.42	305	-5; L3.2, R7.3, U2, D0.2
2-3	4.16	216	0; L3.5, R 0.5, U0.3, D0.1
3-4	8.05	240	+1; L1.2, R5, U0.3, D0.1

Pics are marked 2587 – 3; 4 & 5 are near end showing small chamber and crawl to dig beyond (3) – other pics are on way out looking towards entrance.

2588 (897) – rift near Alpine Chough

29 May 2005 – Big Steve, Ian, PP, Hilary and Susie

Looked for Alpine Chough on way up, found some sites but none looked correct, a similar rift to 2588 found some 50m to East, photo taken and marked Poss99 (1-3) 540m; 0454005; 4797275 – but looks wrong – need to see Pete Egan.

Capped the rift found in November and PP went down on two ladders. Ladder dropped into rift some 2m wide narrowing down to 1m slot down boulders into parallel shaft, in other direction rift continued some 4m to crack and calcite (no go). Used rest of second ladder to go through slot to bottom of parallel shaft, boulder floor no obvious way on other than general dig. Top of this shaft was a hole to surface; this is probable cause of the draught at entrance. Total depth from hole capped out was 50ft. Back on surface found hole to parallel shaft and saw it was marked 897 (pic marked 897) with a cow ear tag – description does not mention the rift or parallel shaft and says it's 50m deep! It is not we did not measure but allowing for depth of rift it is prob 25m at most! Ian has pictures of the digging and ent to 2588.

2572

29 May 2007 – Big Steve, Ian and PP with Susie and Hilary in support. Took 40m rope and two ladders, plus drill etc. Bolted entrance and pitch to previous ledge and placed bolts beyond for drop to bottom. Over edge it was seen that rope was far too short even if we used ladders to for first pitch to ledge (our intended plan). So withdrew to Bar.

31 May 2007 – Big Steve, Lugger and PP with a further 40m rope. PP went to previous limit bolt and fixed new rope and descended to bottom (survey shows about 50m total depth, but needs about a 60m rope for knots etc). Shaft widens out at about 30m down to some 5m wide and across with stall on the overhanging roof. At 45 m you can swing into a small side chamber and inlet. Straight on it is too tight, but to left (looking from pitch) you can climb up over or go under formations (note pic 12 shows Lugger with one stall stuck in helmet!) to a passage that after an excavated squeeze reaches a small chamber where back in the inlet. At first there seems no way on apart from a too tight crack with a trickle of water. But above is a rift that goes over and past the end point, but some easy digging is needed (Bar hammer etc, no

in what
folder
until
classified

capping needed) of about a foot to easy going small rift – this was surveyed to corner using Disto. Back at pitch it looks like the inlet passage may go over pitch (pic 14) to a continuation, but this is not clear.

At base of pitch under chamber is small rift to a further drop of a few meters at most – needs capping out to get in – but big enough beyond although cannot see well until capped out.

1-0	5.23	055	+10 ; survey along rift past squeeze needing digging
1-2	2.5	143	-43; L2.3; R 0.2; U 1; D 0.1
2-3	3.76	127	+5; passed excavated squeeze
3-4	1.16	060	0; to excavated squeeze
4-5	3.23	139	-10; down to upper chamber by pitch
5-6	3.88	143	-2.6; L 0.2; R 1.5; U 1.5; D 1
6-7	2.6	119	-40; down to climb up form lower chamber
7-8	3.26	028	-9; to pitch rope
7-9	5.08	326	+10; to end of too tight inlet
8-10	6.18	135	-54; to rift at bottom (needs capping to small pitch?)
8-11	18.3	0	+90; vert up to bolt for last section of pitch
11-12	11.6	0	+90; vert up to next bolt (below ledge)
12-13	16.72	026	+76; from bolt to ent

Pics 1 to 7 were taken by Lugger, 1; 2 & 6 at ent, but 6 is corrupt but seems ok on Luggers' camera (you will need to get from him). 4;5 & 8 are of pitch below ledge (where I got to last Nov), 3 is at bottom as are the rest taken by me at point some 5m from bottom in side chamber leading to small inlet – 9 & 10 show Steve on pitch, 13 is continuation of passage at higher level into pitch but with possible continuation beyond (could just be an alcove!), 11 and 12 is squeeze through into continuation of inlet – needs bar, chisel and hammer to continue. But little or no draught, however air temp outside was only about 13 deg.

1 June 2007 – Big Steve, Lugger and PP. Worked way along scars on east side of valley above Risco waterfall. Mainly to look at possible archaeology sites rather than new caves etc. On top scar little found of interest with only small undercuts, more on the main scar that has 489 and 487 in it.

Near cave marked 160 an open cave was noted with an easy dig through to a continuation – looks like it has not been dug. Cave length only 4m to dig but can see a further 4m.

GPS – 618m; 0454144;4796542 Pics are marked June 3 p1 and 2

655m?

Lugger looked at 489 to right of entrance just beyond the DCC memorial. This is a side passage that heads back to the cliff face but is blocked by a dry stone wall, possibly of ancient origin – lots of bones in area some seem old, one possibly of a deer. Lugger took a sample to clean and look for any cut marks etc. Lugger took down one small section of wall after photographing it, more bones beyond and an easy dig into a continuation running parallel to cliff line. As well as bones there were lots of fleas, not evident to Lugger until latter back in Matienzo!! Pics are numbered 489 – 2;3;4 and 8 are of this wall, 9&10 are of it with Lugger beyond taken through hole made to gain access. Pic of bones and Lugger looking at them are on near side of wall. Ent from inside shows Big Steve

2731

Subj: **Matienzo**
Date: 13/06/2007 15:30:59 GMT Daylight Time
From: john.thorp@tiscali.co.uk
To: juan.corrin@matienzo.org.uk

3

Hi Juan, Steve and I found a few bits and pieces over the last week; will keep you up to-date with them as soon as I can, though I am rather busy. My scanner is on the blink so the sketch surveys I have done will have to wait. Site 489 is quite interesting (Billy's Dream Cave). A passage has been walled up near the entrance, this goes to a squeeze and continues as hands and knees crawl beyond, not pushed just in walking gear. Lots of bones in the cave, and I also found a potsherd possibly Bronze age. Will send you a picture of potsherd next time. All the best Luggar.

4.6.07.

SITE 1403

A return to this site in early April by Steve Martin and John Thorp produced two small extensions. The constriction below the climb marked lead three on annotated plan was enlarged, this entered an elliptical shaft up to two metres wide and five metres long. The pitch closed in to a few centimetres and was blocked by rocks 17 metres below constriction. Lead three, and the un-descended tight pitch noted in the description connect, the tight pitch was the route followed as lead three hit a further constriction. Although there is a draught at the bottom the rift is too constricted to dig.

PLAN
in Feb '07
log book



SITE 1403. STEVE MARTIN HILTY CAPPING CONSTRICTION AT TOP OF PITCH (LEAD 3.)

During work on the pitch head John checked out the upper leads marked 4 on annotated plan, the lower of these was pushed for a few metres to a small chamber with a floor of calcite covered blocks, small holes lead down, above was a climb to a further enlargement with a window in the south west wall. This was not entered as it appeared to be connected with the known cave, (Though this could not be found when looked for later). A further climb entered a small breakdown chamber; this was not pushed as it appeared unstable and must be very close to the surface. Back at the start, the hole part way up the slope was enlarged, though not quite big enough to pass through. The continuing passage could be seen to drop away quite steeply, and was large enough to follow. A hammer and chisel would be needed to loosen compact breccia at top of hole. In total the extensions probably added about 30 metres and increased the depth by 15 metres. One strange thing was noticed on the way out, the draughting hole connecting 1403 to Cuvia De Campo was blowing very strongly but no draught was observed when climbing out of site 1403. Where does the draught go? The other leads in this cave are still worth pursuing.

1k

----- Original Message -----

From: Uzueka@aol.com

To: john.thorp@tiscali.co.uk

Sent: Monday, June 18, 2007 5:52 PM

Subject: Matienzo

Hi Lugger

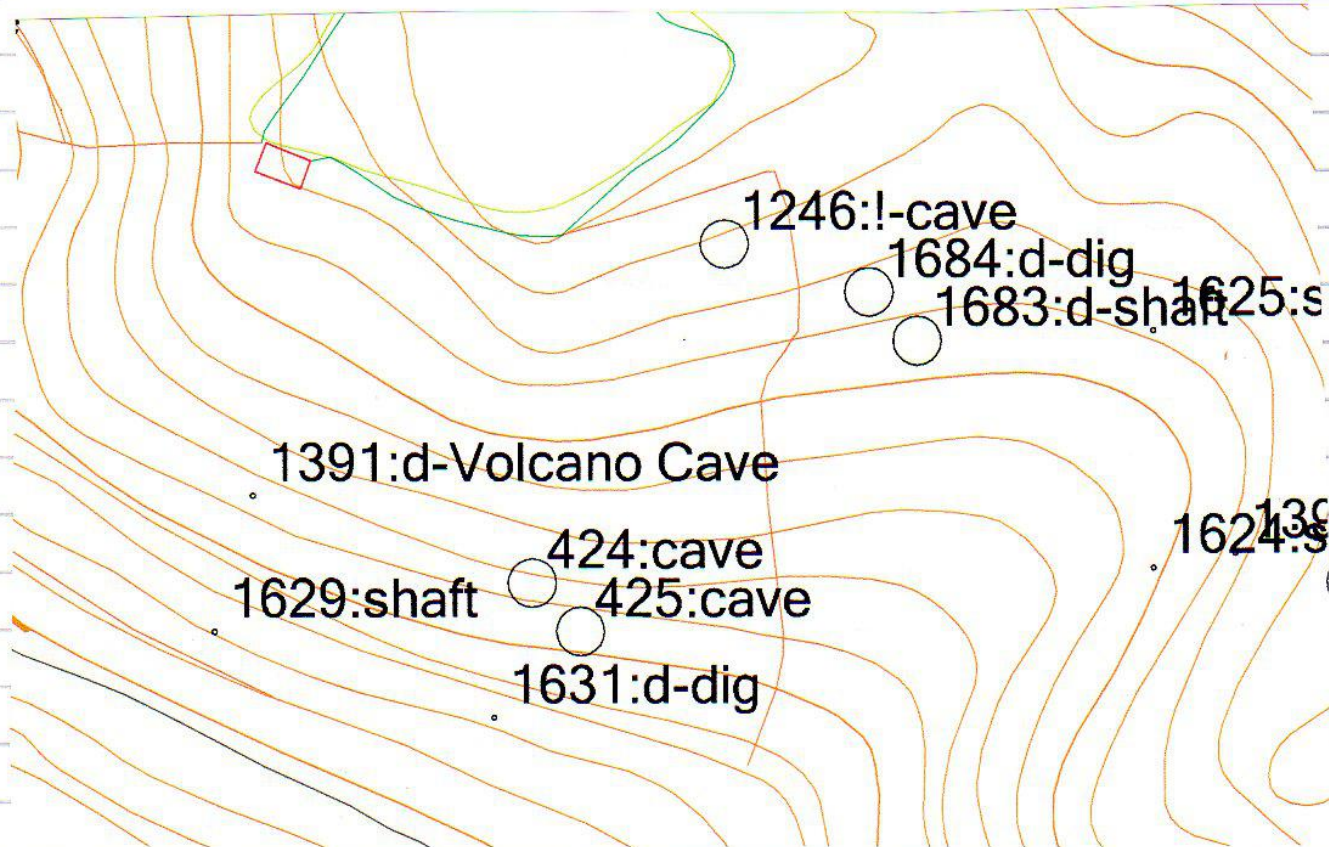
The 2 shots you took (including the GPS) must be site 1246 - map attached - which should look right in relation to Volcano. Looks as if it's near a wall corner.

CD is in the post.

Cheers

Juan

Hi Juan. Site 1246 is certainly nearer than Site 424. The Site is about 100 metres up from wall corner and 100 metres in from wall. There is another possible shaft halfway to wall though this is in a shakehole filled with thorn bushes, no stones were available to check the depth and we were in light clothing. The cave is just offset from a shallow dry valley which emerges from top of woods at other side of bottom wall. Is it possible that Site 424 and Site 1246 are the same cave as the descriptions are very close. All the best
Lugger



MATIENZO CAVES PROJECT